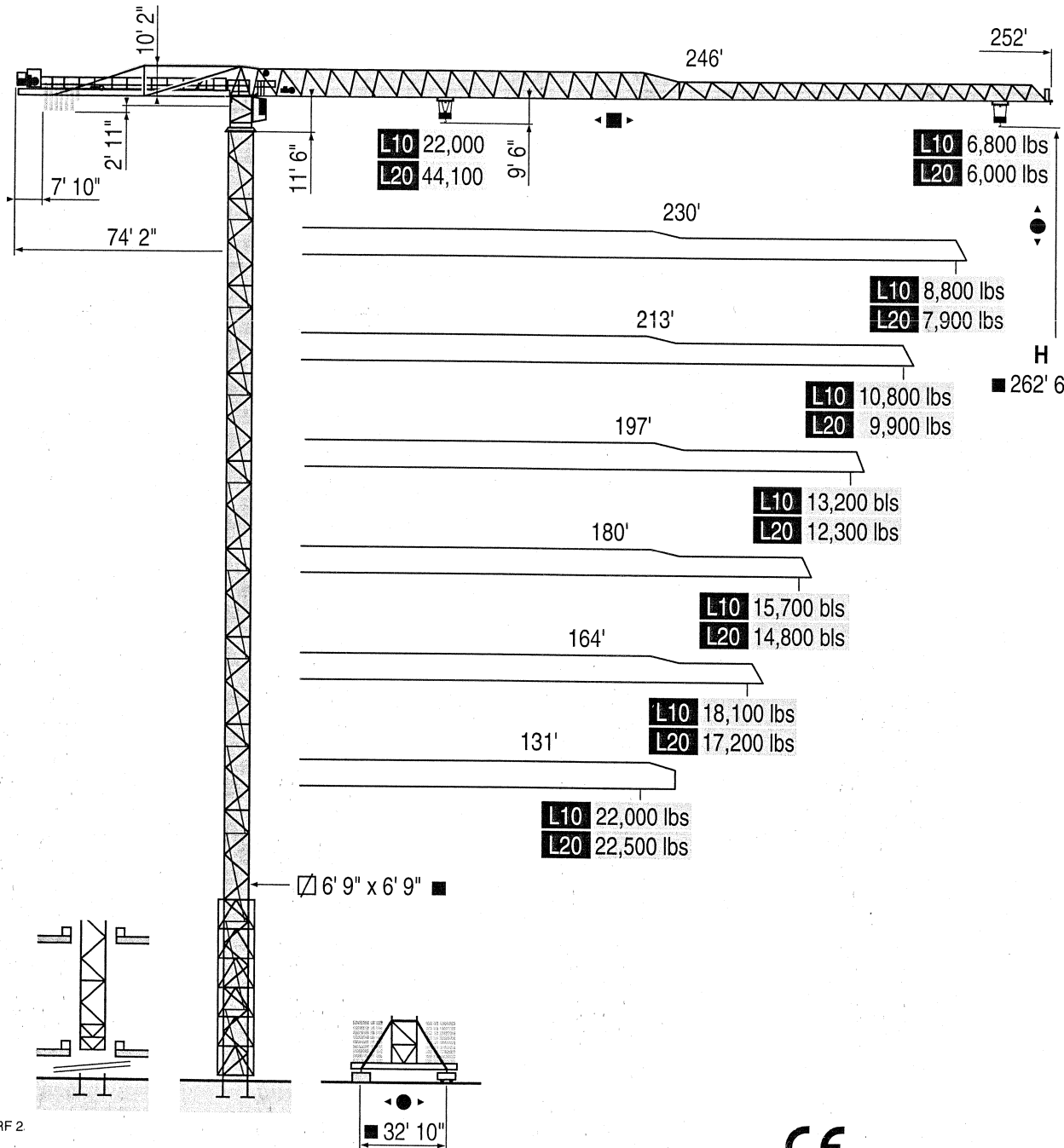


# Topless MDT 412 L10-L20 / US

HD



HDT



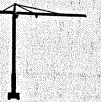
GTMR



CITY CRANE



TOPKIT MD  
MAXI MD



MAXI TOPKIT



Topless MDT



MR



LRF 2

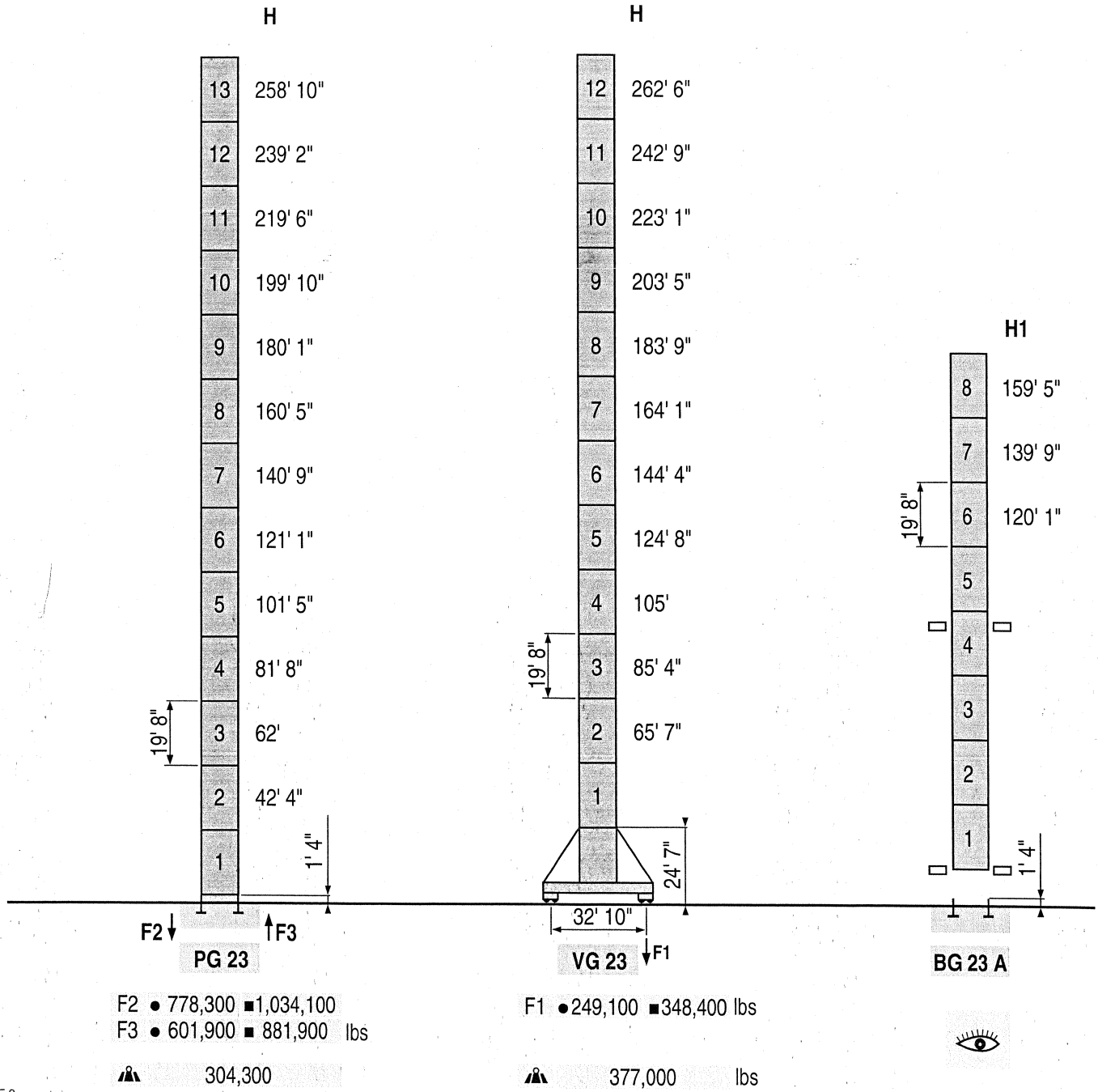
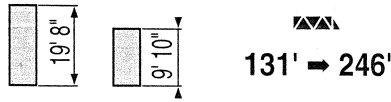
CE FEM 1.001-A3



**POTAIN** 

# Masts / Reactions

□ 6' 9"  
MDT 412 L10-L20



LRF 2

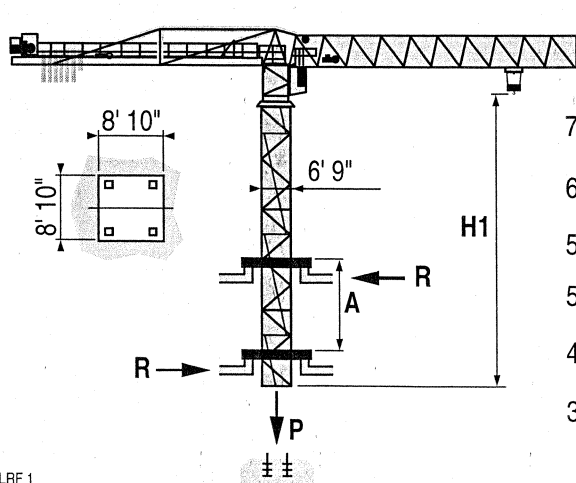
- 👁 See climbing crane
- Reactions in service
- Reactions out of service
- ▲ Without load, ballast (or transport axles), with maximum jib and maximum height.

# Load diagrams

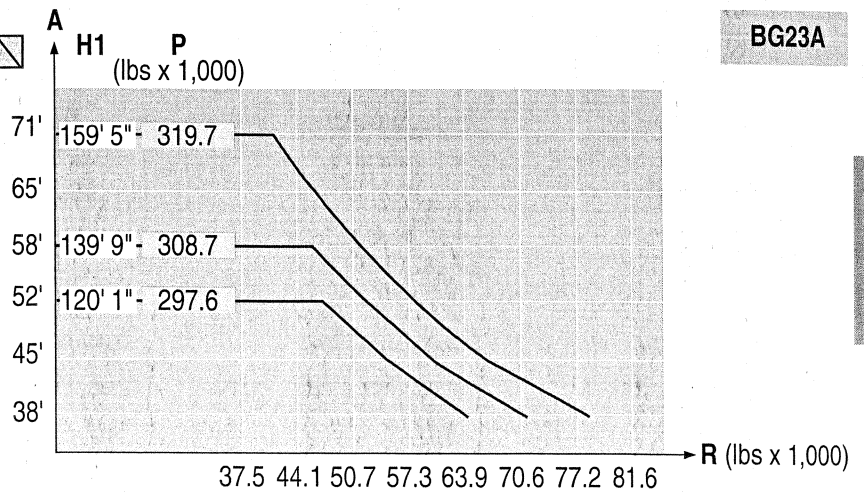
246'	L20	8' >	50'	56'	66'	72'	82'	89'	92'	92'	98'	105'	115'	121'	131'	138'	148'	154'	164'	171'	180'	187'	197'	203'	213'	220'	230'	236'	246'	lbs x 1,000	
	L10																														
230'	L20	8' >	56'	66'	72'	82'	89'	98'	103'	105'	105'	115'	121'	131'	138'	148'	154'	164'	171'	180'	187'	197'	203'	213'	220'	230'	lbs x 1,000				
	L10																														
213'	L20	8' >	61'	66'	72'	82'	89'	98'	105'	113'	115'	121'	131'	138'	148'	154'	164'	171'	180'	187'	197'	203'	213'	lbs x 1,000							
	L10																														
197'	L20	8' >	67'	72'	82'	89'	98'	105'	115'	121'	123'	126'	131'	138'	148'	154'	164'	171'	180'	187'	197'	lbs x 1,000									
	L10																														
180'	L20	8' >	70'	72'	82'	89'	98'	105'	115'	121'	130'	131'	133'	138'	148'	154'	164'	171'	180'	lbs x 1,000											
	L10																														
164'	L20	8' >	72'	82'	89'	98'	105'	115'	121'	131'	133'	137'	138'	148'	154'	164'	lbs x 1,000														
	L10																														
131'	L20	8' >	73'	82'	89'	98'	105'	115'	121'	131'	lbs x 1,000																				
	L10																														

LRF1

# Climbing crane















LRF1




BG23A

- A Distance between collars
- H1 Crane height
- P Crane weight (in service)
- R Horizontal reaction

# Mechanisms

										ch - PS hp	kW		
	<b>66 S 5,0</b> <b>310</b>	fpm	13/126	20/197	31/315	51/500	6/63	10/98	16/157	25/250	108	79.2	1,017' >1,017' 
		lbs	22,000	14,300	8,600	4,900	44,100	28,700	17,200	9,700			
	<b>66 S 5,0</b> <b>685</b>	fpm	11/106	17/164	26/262	42/417	5/53	8/82	13/130	21/209	108	79.2	2,247' >2,247' 
		lbs	22,000	14,300	8,600	4,900	44,100	28,700	17,200	9,700			
	<b>102 S 5,0</b> <b>310</b>	fpm	15/150	24/236	38/378	59/591	8/79	12/118	19/189	30/290	168	122.4	1,017' >1,017' 
		lbs	22,000	18,300	10,800	6,400	44,100	36,600	21,600	13,300			
	<b>DV-7,5</b>	fpm	0 → 280							12.4	9		
	<b>OR-16,5</b>	rpm	1							3 x 9	3 x 6.6		
<b>VG23</b> 		fpm	98							2 x 12.4	2 x 9		

CEI 38  IEC 38	<b>kVA</b>
480 V (+6% -10%) 60 Hz	66 S : 132 kVA 102 S : 192 kVA

LRF 2

-  Hoisting
-  Trolleying
-  Slewing
-  Travelling
-  Consult us

**POTAIN**   
 GROUPE LEGRIS INDUSTRIES

18.Rue de Charbonnières, B.P. 173  
 F-69132 ECULLY Cedex  
 Tél. (33)04.72.18.20.20  
 Fax (33)04.72.18.20.00  
<http://www.potain.com>  
 E-mail : mkt@potain.fr

**Topless MDT 412 L10-20 / US**

Copyright.Reproduction interdite © POTAIN 1999

**Deutschland**  
 POTAIN GmbH Tel : 06.105.704.0  
**Italia**  
 POTAIN S.p.A. Tel : 0.331.49.33.11  
**Singapore**  
 POTAIN PTE LTD Tel : (00.65) 227.1550

Réf. 1999.32. LRF.3

Subject to modification

Printed in France

Réalisation HeadLines