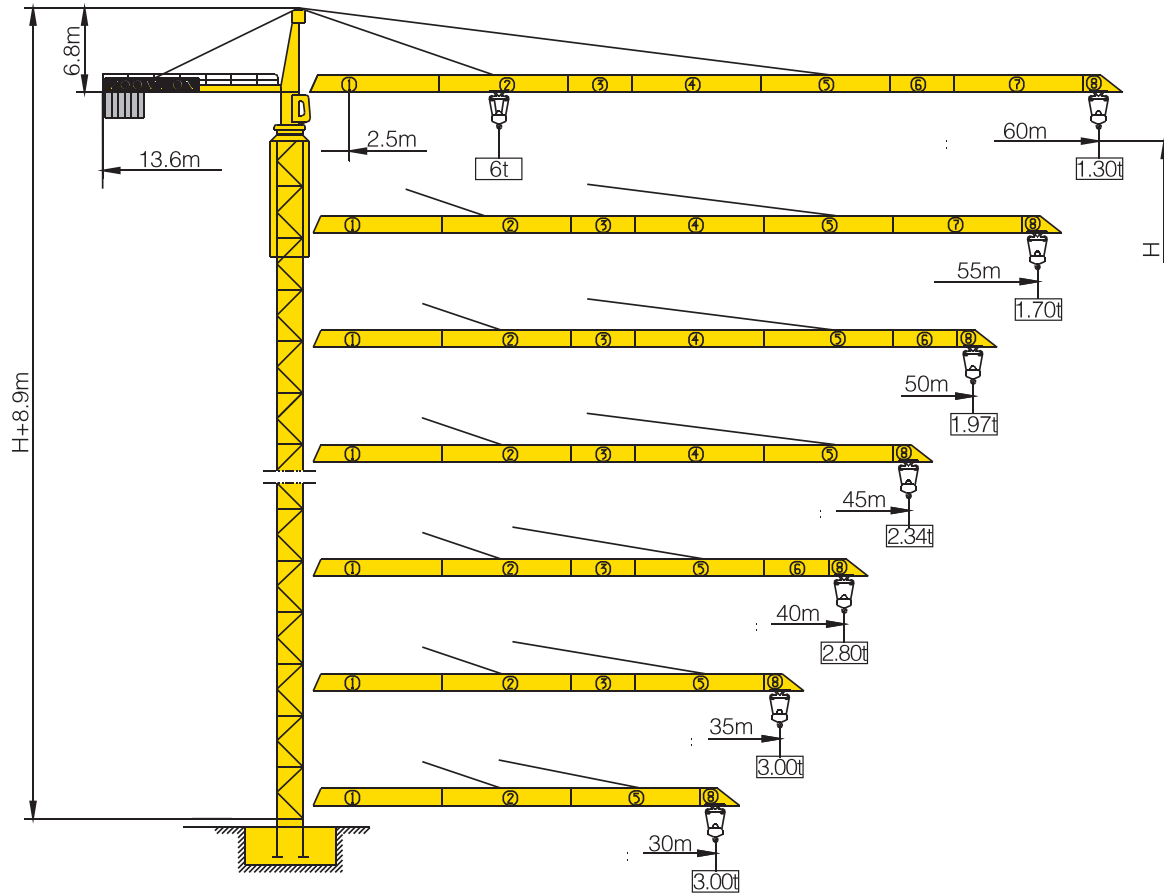


TC6013A-6



Counter-jib ballast

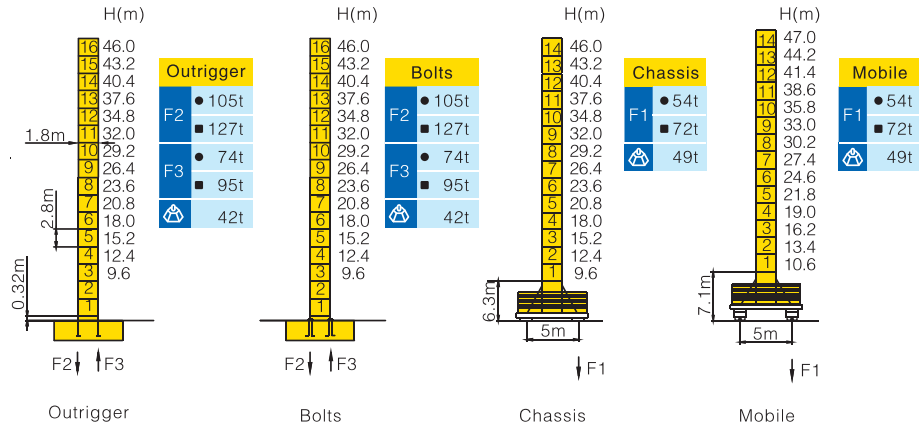
		(Kg)	PHZ2850	PHZ1400
60m	13.6m	17050	5	2
55m	13.6m	15650	5	1
50m	13.6m	14200	4	2
45m	13.6m	12800	4	1
40m	13.6m	11400	4	0
35m	13.6m	9950	3	1
30m	13.6m	8550	3	0

Working Height(m) @ Wall-tie Location(m)

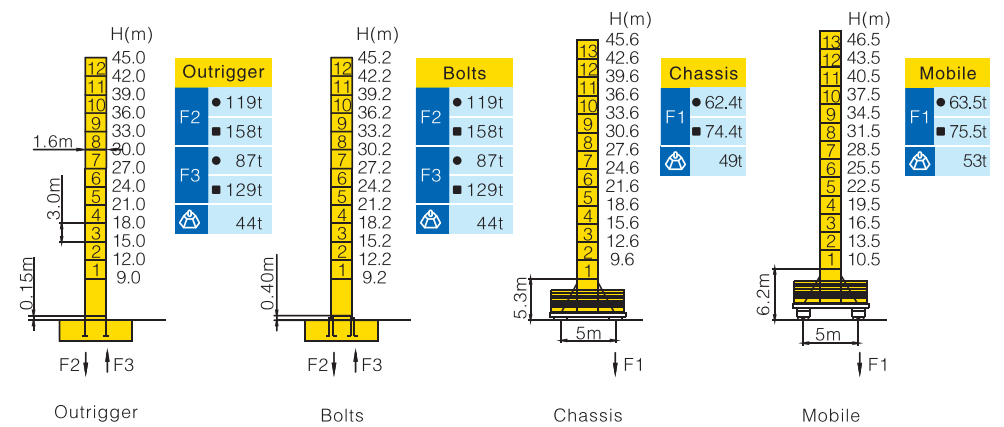
Model Detail	Mast Code	Wall-tie #1	Wall-tie #2	Wall-tie #3	Wall-tie #4	Wall-tie #5	Wall-tie #6	Wall-tie #7	Wall-tie #8	Wall-tie #9
TC6013A-6	A1	68.4 @ 31	90.8 @ 53.4	110.4 @ 75.8	130 @ 95.4	149.6 @ 115	169.2 @ 134.6	188.8 @ 154.2	208.4 @ 173.8	220 @ 193.4
TC6013A-6F	L46A1	69 @ 34	93 @ 58	114 @ 82	135 @ 103	156 @ 124	177 @ 145	198 @ 166	216 @ 187	—

Masts Reactions

TC6013A-6



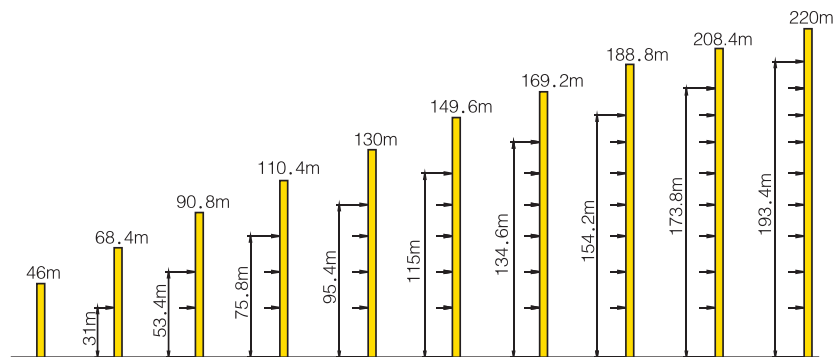
TC6013A-6F



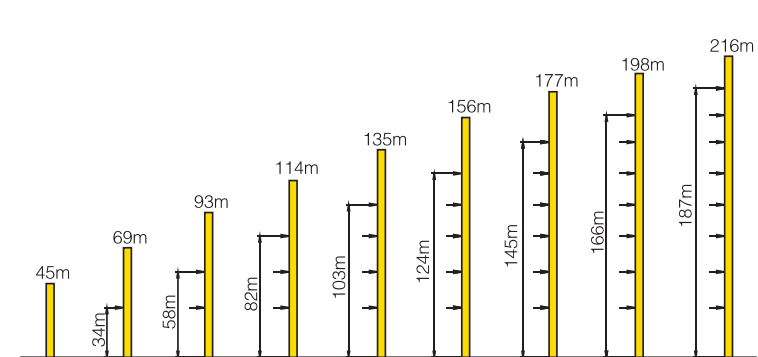
● Reactions in service ■ Reactions out of service
 ⚙ Without load and ballast with longest jib and maximum height
 ⓘ For more erecting solutions, consult us!

Anchorage


TC6013A-6




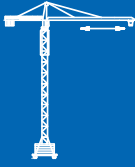




TC6013A-6F



Load diagrams

		Max.Capacity m/t	17.5	20	22	25	28	30	32	35	38	40	42	45	48	50	52	55	58	60		
60m (R=61.03)	♢	2.5-31.8m 3t	3.00								2.98	2.67	2.41	2.25	2.12	1.93	1.77	1.68	1.59	1.47	1.36	1.30
	♢♢	2.5-17.5m 6t	6.00	5.14	4.59	3.94	3.43	3.15	2.91	2.60	2.34	2.18	2.05	1.86	1.70	1.61	1.52	1.40	1.29	1.23		
55m (R=56.03)	♢	2.5-35.2m 3t	3.00									2.73	2.56	2.41	2.21	2.03	1.93	1.83	1.70			
	♢♢	2.5-19.4m 6t	6.00	5.77	5.16	4.44	3.88	3.57	3.30	2.95	2.66	2.49	2.34	2.14	1.96	1.86	1.76	1.63				
50m (R=51.03)	♢	2.5-35.8m 3t	3.00									2.79	2.62	2.46	2.26	2.08	1.97					
	♢♢	2.5-19.6m 6t	6.00	5.88	5.26	4.53	3.96	3.64	3.37	3.01	2.72	2.55	2.39	2.19	2.01	1.90						
45m (R=46.03)	♢	2.5-36.88m 3t	3.00									2.89	2.71	2.55	2.34							
	♢♢	2.5-20.2m 6t	6.00	6.00	5.43	4.68	4.09	3.76	3.48	3.12	2.82	2.64	2.48	2.27								
40m (R=41.03)	♢	2.5-37.73m 3t	3.00									2.98	2.80									
	♢♢	2.5-20.7m 6t	6.00	6.00	5.59	4.82	4.21	3.88	3.59	3.22	2.91	2.73										
35m (R=36.03)	♢	2.5-35m 3t	3.00																			
	♢♢	2.5-20.2m 6t	6.00	6.00	5.44	4.68	4.09	3.77	3.48	3.12												
30m (R=31.03)	♢	2.5-23.0m 3t	3.00																			
	♢♢	2.5-20.01m 6t	6.00	6.00	5.37	4.63	4.04	3.72														

Mechanisms

		Hoisting	QEL680D	
	Slewing	HPW55B.130		
	0 ~ 0.8 r/min	2×55 kW		
	Trolleying	BP40B		
	0 ~ 55 m/min	4.0 kW		
	Travelling	ZA52-D ZC52-D		
	0 ~ 25 m/min	2×5.2 kW		
 24/24 kW  440m ⓪ (6 layers) ⓪ Consult us If overtop	II	б	3t	40 m/min
		бб	6t	20 m/min
	III	б	1.5t	80 m/min
		бб	3t	40 m/min
		380V(+10%–10%) 50Hz		39.0+2 × 5.2 kW

For more mechanisms optional, consult us!