

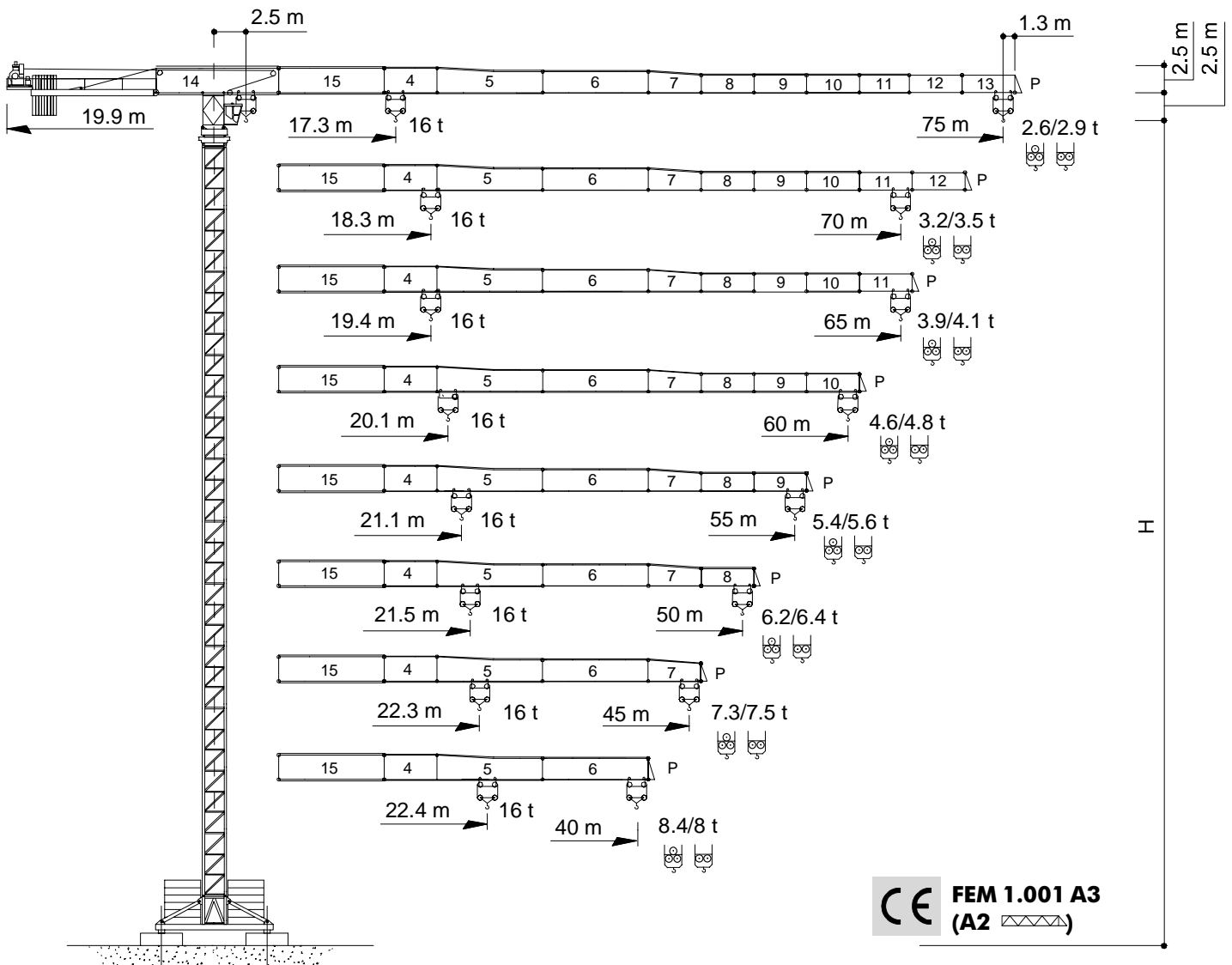
COMEDIL

Gru a torre "Flat Top"

"Flat Top" Tower Crane • Grue à tour "Flat Top"

"Flat Top" Turmdrehkran • Grua torre "Flat Top"

CTT 331-16 HD23



simple, available and cost effective™



Diagramma di portata
Load Diagram

I
GB

Curbes de charges
Lastkurven

F
D

Curvas de cargas

E

CTT 331-16

	m	10	15	20	25	30	35	40	45	50	52	55	57	60	62	65	67	70	72	75
8 t - 32,1 m	t	8	8	8	8	8	7,24	6,21	5,42	4,78	4,57	4,27	4,09	3,84	3,69	3,48	3,35	3,17	3,06	2,90
8 t - 31,5 m	t	8	8	8	8	8	7,06	6	5,19	4,53	4,31	4,00	3,82	3,56	3,41	3,19	3,06	2,87	2,76	2,60
16 t - 17,3 m	t	16	16	13,54	10,48	8,48	7,06	6	5,19	4,53	4,31	4,00	3,82	3,56	3,41	3,19	3,06	2,87	2,76	2,60
8 t - 34,5 m	t	8	8	8	8	8	7,86	6,76	5,91	5,23	5,00	4,68	4,48	4,22	4,06	3,83	3,69	3,50		
8 t - 33,6 m	t	8	8	8	8	8	7,61	6,50	5,64	4,95	4,71	4,39	4,20	3,93	3,76	3,54	3,40	3,20		
16 t - 18,3 m	t	16	16	14,46	11,23	9,11	7,61	6,50	5,64	4,95	4,71	4,39	4,20	3,93	3,76	3,54	3,40	3,20		
8 t - 36,3 m	t	8	8	8	8	8	8	7,17	6,28	5,57	5,32	4,99	4,78	4,51	4,34	4,10				
8 t - 35,8 m	t	8	8	8	8	8	8	7,03	6,12	5,40	5,15	4,81	4,60	4,31	4,14	3,90				
16 t - 19,4 m	t	16	16	15,44	12,03	9,79	8,21	7,03	6,12	5,40	5,15	4,81	4,60	4,31	4,14	3,90				
8 t - 38,1 m	t	8	8	8	8	8	8	7,59	6,65	5,91	5,65	5,30	5,09	4,80						
8 t - 37,4 m	t	8	8	8	8	8	8	7,41	6,47	5,72	5,46	5,11	4,89	4,60						
16 t - 20,1 m	t	16	16	16	12,59	10,27	8,63	7,41	6,47	5,72	5,46	5,11	4,89	4,60						
8 t - 40 m	t	8	8	8	8	8	8	8	7,02	6,24	5,97	5,60								
8 t - 39,2 m	t	8	8	8	8	8	8	7,82	6,83	6,04	5,77	5,40								
16 t - 21,1 m	t	16	16	16	13,24	10,81	9,10	7,82	6,83	6,04	5,77	5,40								
8 t - 40,9 m	t	8	8	8	8	8	8	8	7,20	6,40										
8 t - 40,1 m	t	8	8	8	8	8	8	8	7	6,20										
16 t - 21,5 m	t	16	16	16	13,57	11,08	9,32	8,02	7	6,20										
8 t - 42,5 m	t	8	8	8	8	8	8	8	7,50											
8 t - 41,5 m	t	8	8	8	8	8	8	8	7,30											
16 t - 22,3 m	t	16	16	16	14,10	11,53	9,70	8,35	7,30											
8 t - 40 m	t	8	8	8	8	8	8	8												
8 t - 40 m	t	8	8	8	8	8	8	8												
16 t - 22,4 m	t	16	16	16	14,19	11,60	9,76	8,40												

Altre installazioni
Other configurations

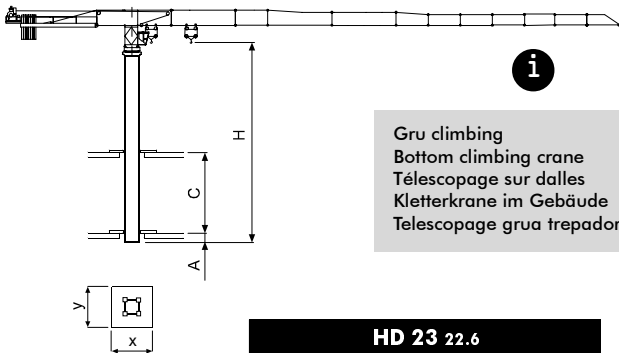
I
GB

Autres implantations
Aufstellmöglichkeiten

F
D

Otras implantaciones

E

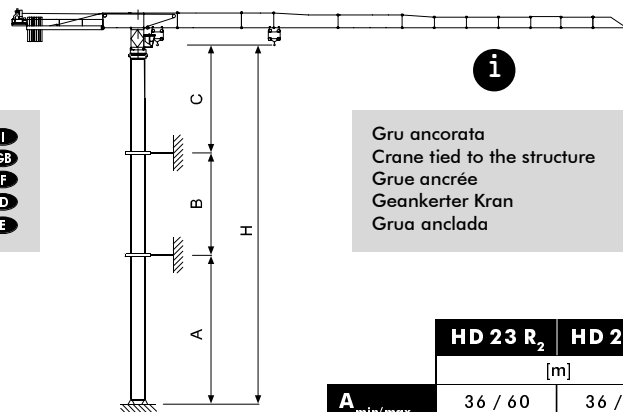


i

Gru climbing
Bottom climbing crane
Télescopage sur dalles
Kletterkrane im Gebäude
Telescopage grua trepadora

I
GB
F
D
E

HD 23 22.6				
[m]				
A _{min}	2	2	2	2
C _{min}	10	12	14	16
H _{max}	36	44	50	54
x	2.95			
y	2.42			



i

Gru ancorata
Crane tied to the structure
Grue ancrée
Geankerter Kran
Grua anclada

I
GB
F
D
E

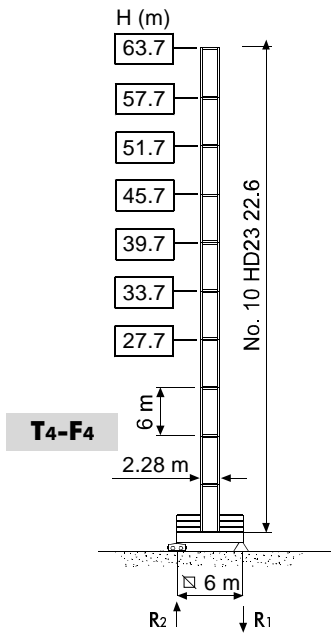
HD 23 R ₂		HD 23 R ₃	
[m]			
A _{min/max}	36 / 60	36 / 78	
B _{min/max}	24 / 42		
C _{max}	48		
H _{max}	i		

Torre **I**
Mast **GB**

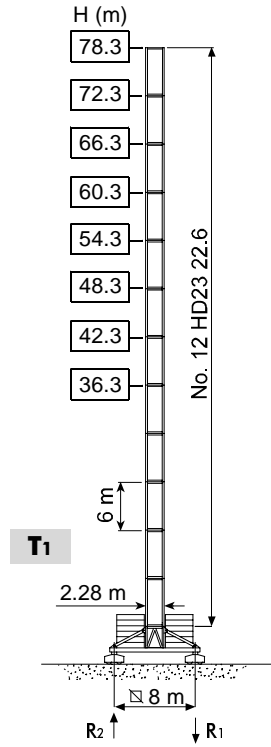
Mât **F**
Turm **D**

Mástil **E**

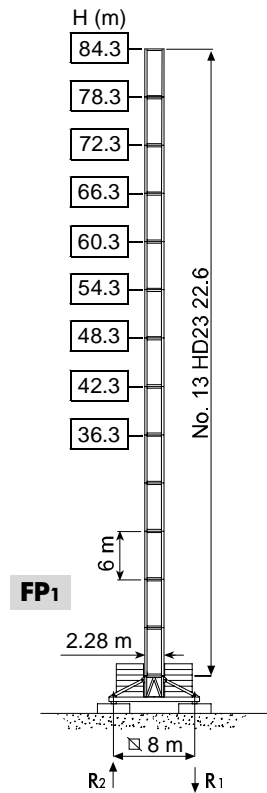
HD 23



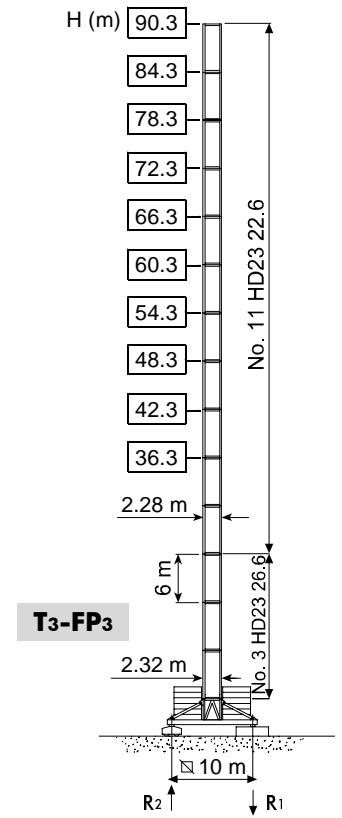
R1	1435 kN ●	1571 kN ◊
	113 t	



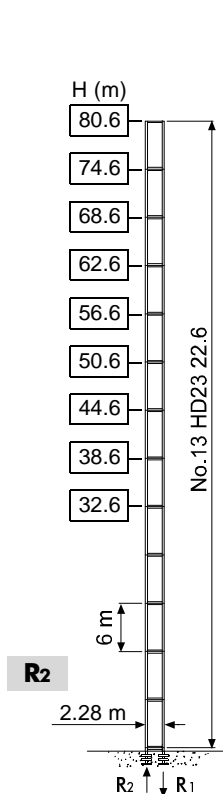
R1	1520 kN ●	1770 kN ◊
R2		245 kN ◊
	140 t	



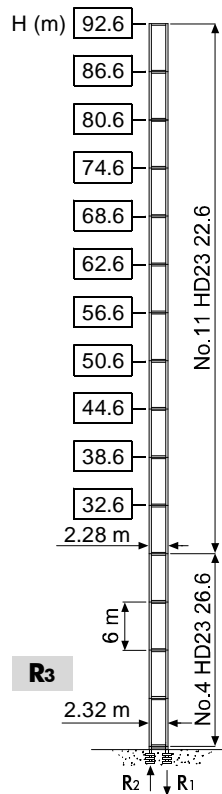
R1	1660 kN ●	2000 kN ◊
R2		260 kN ◊
	145 t	



R1	1700 kN ●	2050 kN ◊
R2		200 kN ◊
	159 t	



R1	3150 kN ●	4400 kN ◊
R2	2350 kN ●	3700 kN ◊
	107 t	



R1	3500 kN ●	5410 kN ◊
R2	2620 kN ●	4630 kN ◊
	123 t	

- | | | |
|----------|------------------------------------------------------------|-----------|
| H | Altezza massima sotto gancio | I |
| ● | In servizio | |
| ◊ | Fuori servizio | |
| | A vuoto, senza zavorra, braccio max., altezza max. | |
| H | Max. under hook height | GB |
| ● | In service | |
| ◊ | Out of service | |
| | Without load, without ballast, max. jib and max. height | |
| H | Hauteur maxi. sous crochet | F |
| ● | En service | |
| ◊ | Hors service | |
| | A vide, sans lest, avec flèche et hauteur maximum | |
| H | Höchste Hackenhöhe | D |
| ● | In Betrieb | |
| ◊ | Alternativlösung | |
| | Ohne Last und Ballast, mit Maximalausleger und Maximalhöhe | |
| H | Maxima altura bajo gancho | E |
| ● | En servicio | |
| ◊ | Fuera de servicio | |
| | Sin carga, sin lastre, con pluma y altura máxima | |

Meccanismi
Mechanisms

I
GB

Mécanismes
Antriebe

F
D

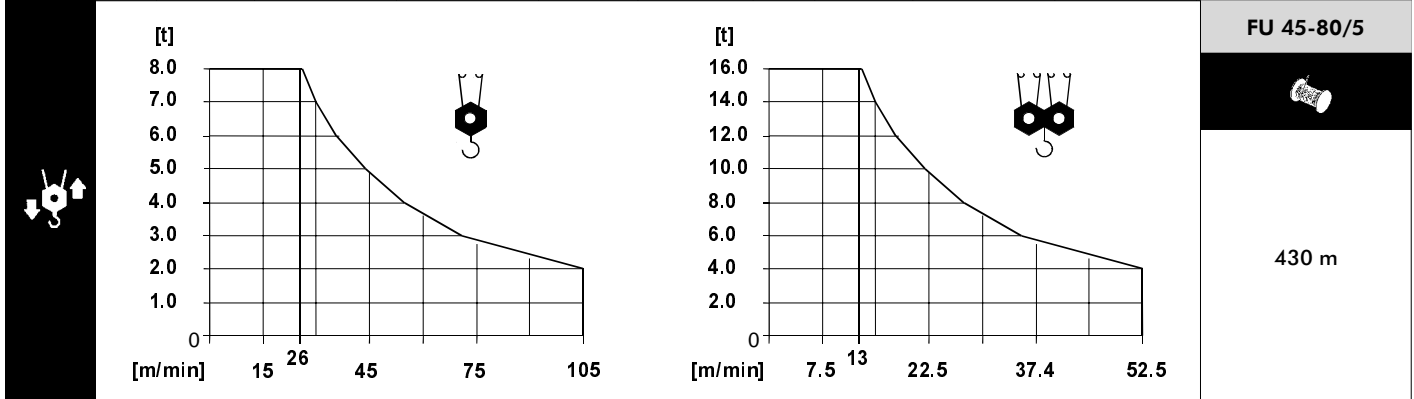
Mecanismos

E

	75 AWL 80 LC	156 * kVA	400 V - 50 Hz / 460 V - 60 Hz		CE 87/405
	90 AWL 80 LC	172 * kVA			
	FU 45-80/5	114 * kVA			

* Gru senza traslazione / Crane without travelling equipment / Grue sans translation / Krane ohne Schienenfahren / Grúa sin traslación

		m/min	t	kW				m/min	t	kW	
	75 AWL 80 LC	0 ⇄ 37	8	75	570 m		90 AWL 80 LC	0 ⇄ 43	8	90	570 m
		0 ⇄ 51	5.65					0 ⇄ 59	5.67		
		0 ⇄ 70	4.05					0 ⇄ 80	4		
		0 ⇄ 97	2.8					0 ⇄ 109	2.77		
		0 ⇄ 114	0.4					0 ⇄ 124	0.5		
		0 ⇄ 18.5	16					0 ⇄ 21.5	16		
		0 ⇄ 25.5	11.3					0 ⇄ 29.5	11.34		
		0 ⇄ 35	8.1					0 ⇄ 40	8		
		0 ⇄ 48.5	5.6					0 ⇄ 54.5	5.54		
		0 ⇄ 57	0.8					0 ⇄ 62	1		



	DSR 3 70	12 ⇄ 36 ⇄ 72 m/min	70/50 Nm
	DCC 5 112	0 ⇄ 95 m/min	11 kW
	SSR 4 4 65	0.73 r.p.m.	4 × 65 Nm
	TSR 2 RG 4 M 8	12 ⇄ 24 m/min	4 × 80 Nm
	TSR 4 RG 4 M 8		
	R ≥ 12 m	i	

	Max. H [m]	
T ₁	60.3	> 60.3
T ₃	66.3	> 66.3
T ₄	63.7	

	Sollevamento	I	Hoisting	GB	Levage	F	Heben	D	Elevación	E
	Traslazione carrello		Trolleying		Distribution		Katzfahren		Distribución	
	Rotazione		Slewing		Orientation		Schwenken		Orientación	
	Traslazione		Travelling		Translation		Schienenfahren		Traslación	
	Direttiva sul livello acustico		Directive on noise level		Directive sur le niveau acoustique		Richtlinie für den Schall-Leistungspegel		Directiva sobre el nivel acustico	
	Consultateci		Consult us		Nous consulter		Auf Anfrage		Consultarnos	
	Potenza totale richiesta		Power requirements		Puissance totale nécessaire		Geforderte Stromstärke		Potencia necesaria	
	Alimentazione		Power supply		Alimentation		Stromversorgung		Alimentación	