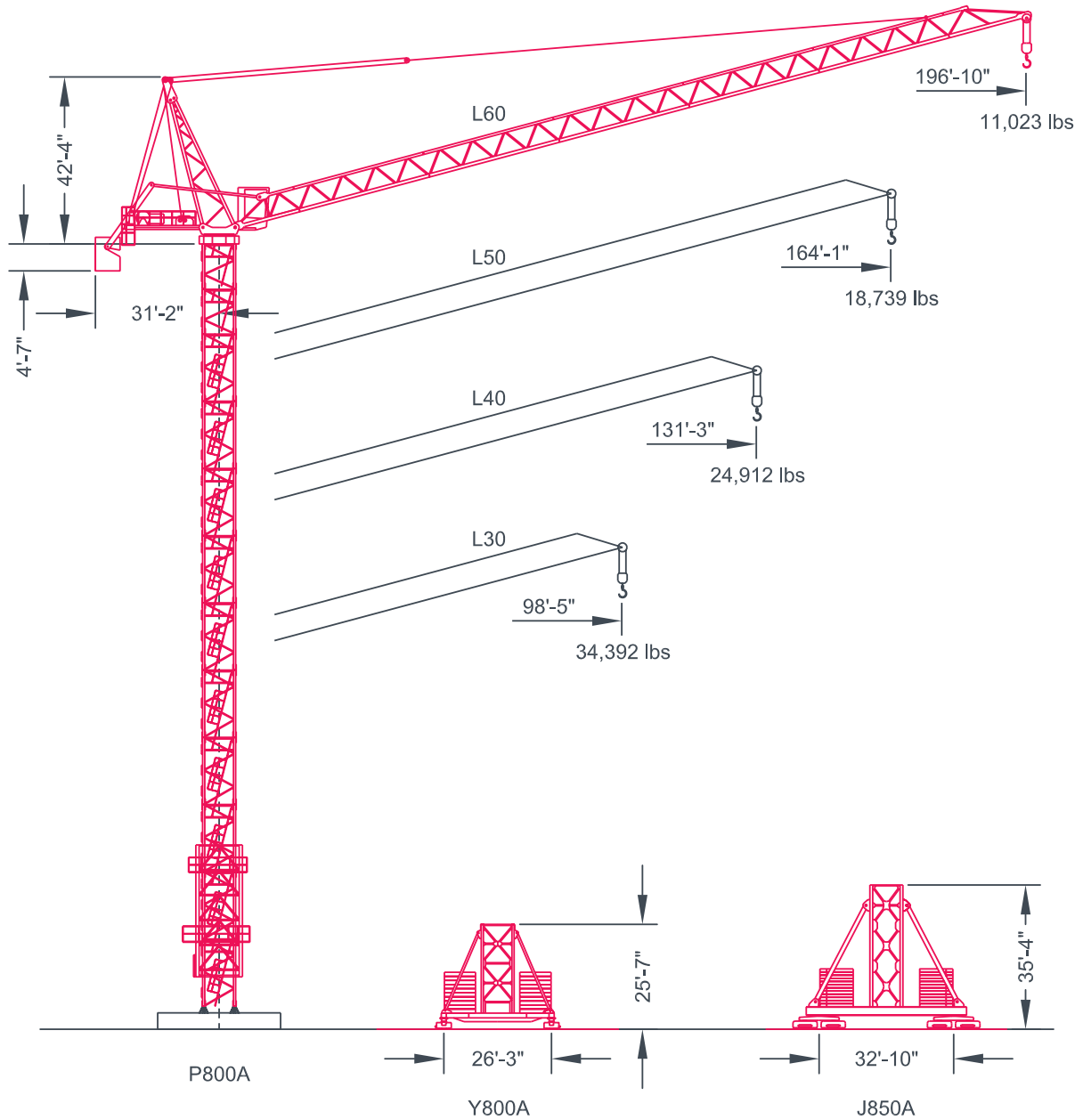




MR 415-H24

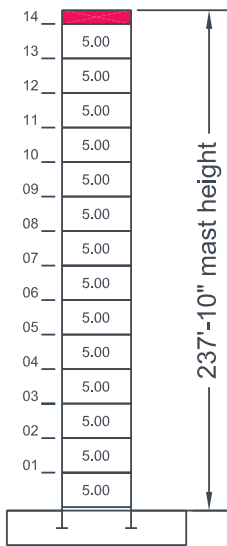
Maximum Capacity = 52,911 lbs



F.E.M. 1.001

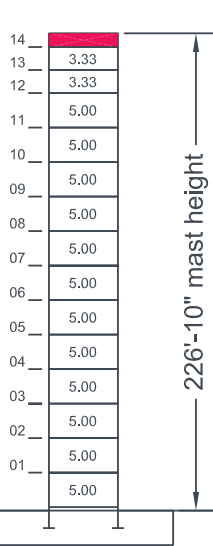
Maximum Free-Standing Mast Heights

L30 Jib



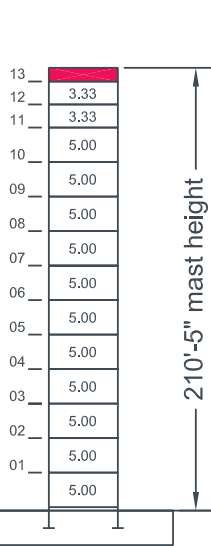
P800A

L40 Jib



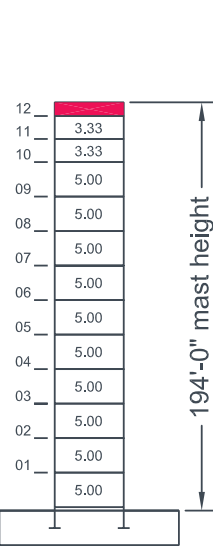
P800A

L50 Jib



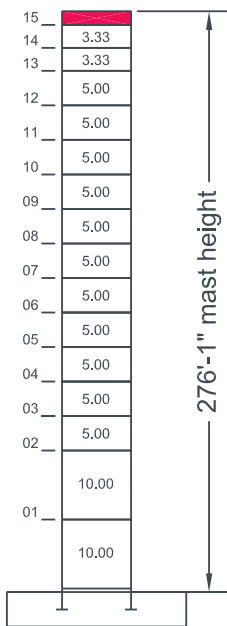
P800A

L60 Jib



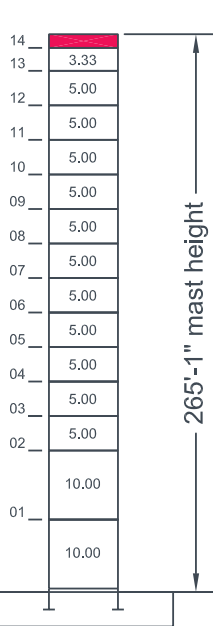
P800A

L30 Jib



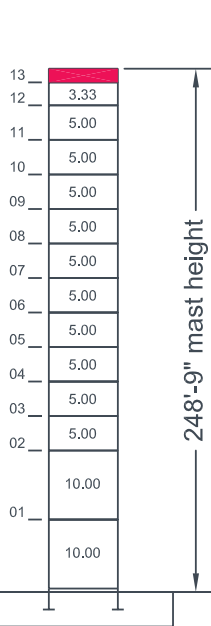
P850A

L40 Jib



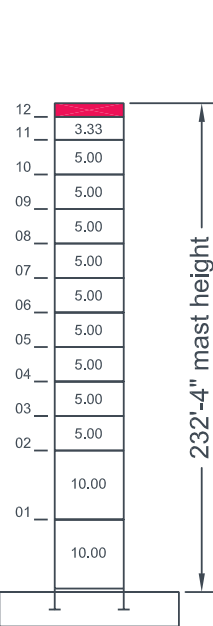
P850A

L50 Jib



P850A

L60 Jib



P850A

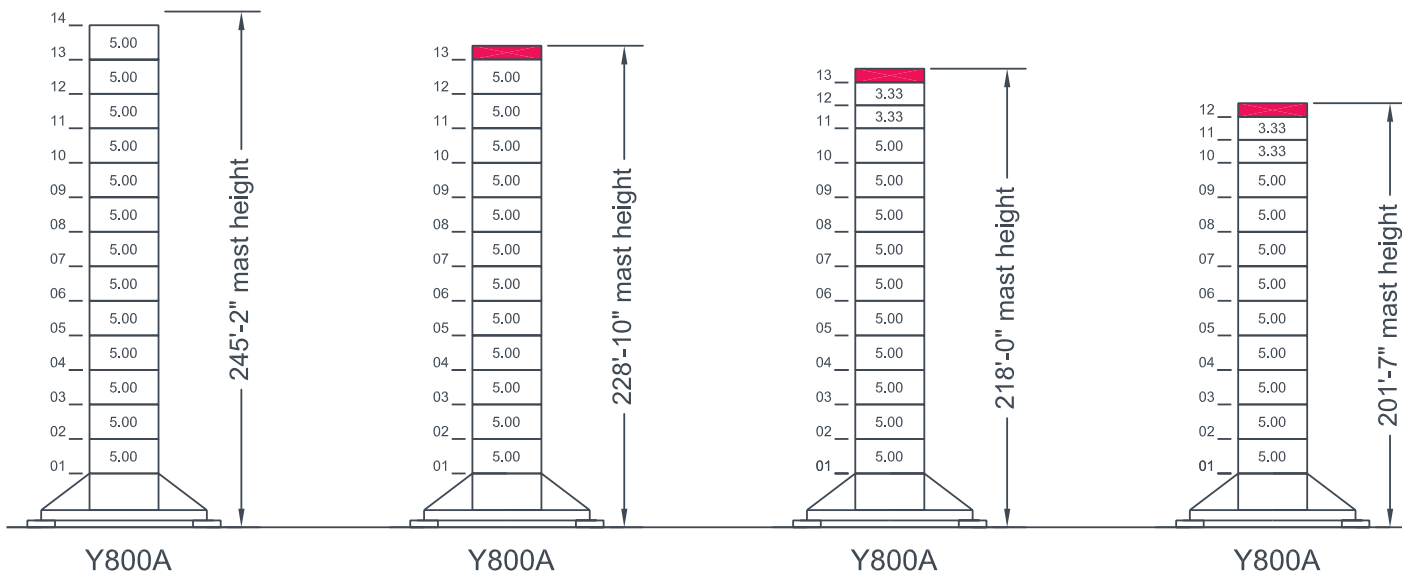
Maximum Free-Standing Mast Heights

L30 Jib

L40 Jib

L50 Jib

L60 Jib

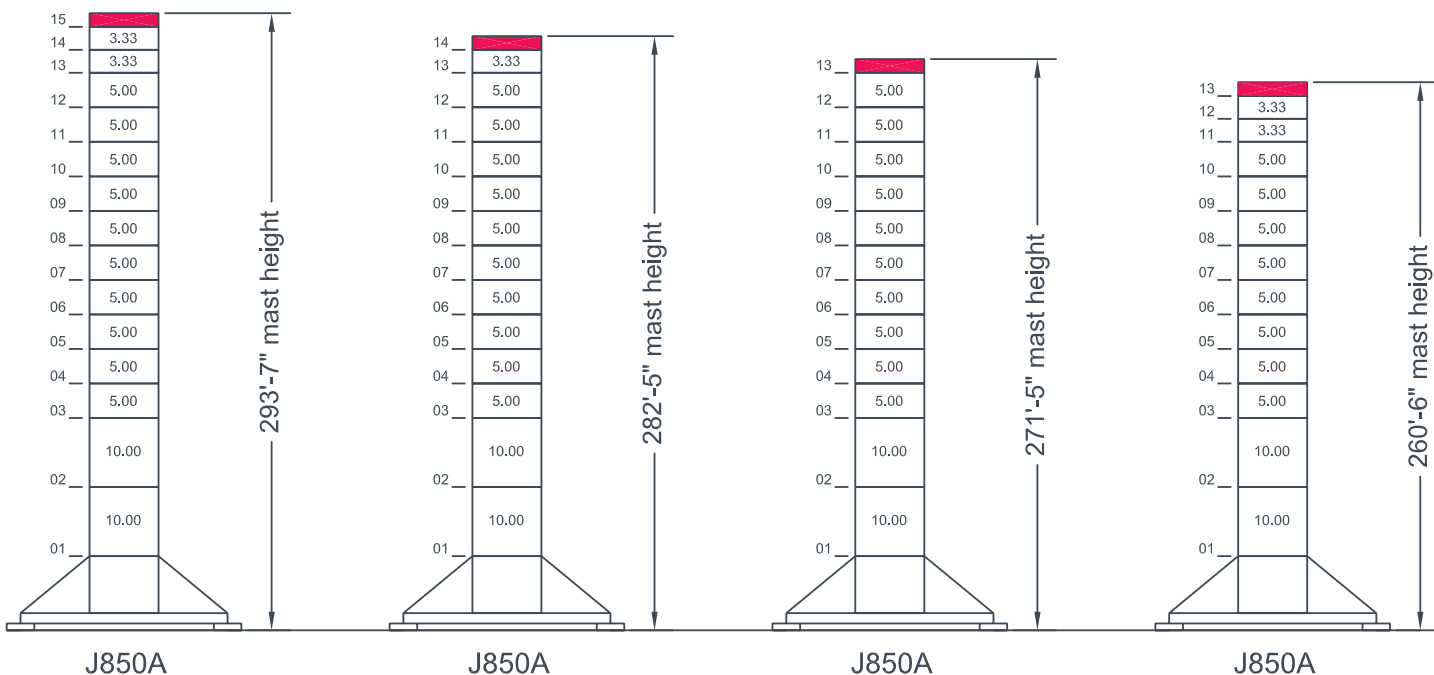


L30 Jib

L40 Jib

L50 Jib

L60 Jib

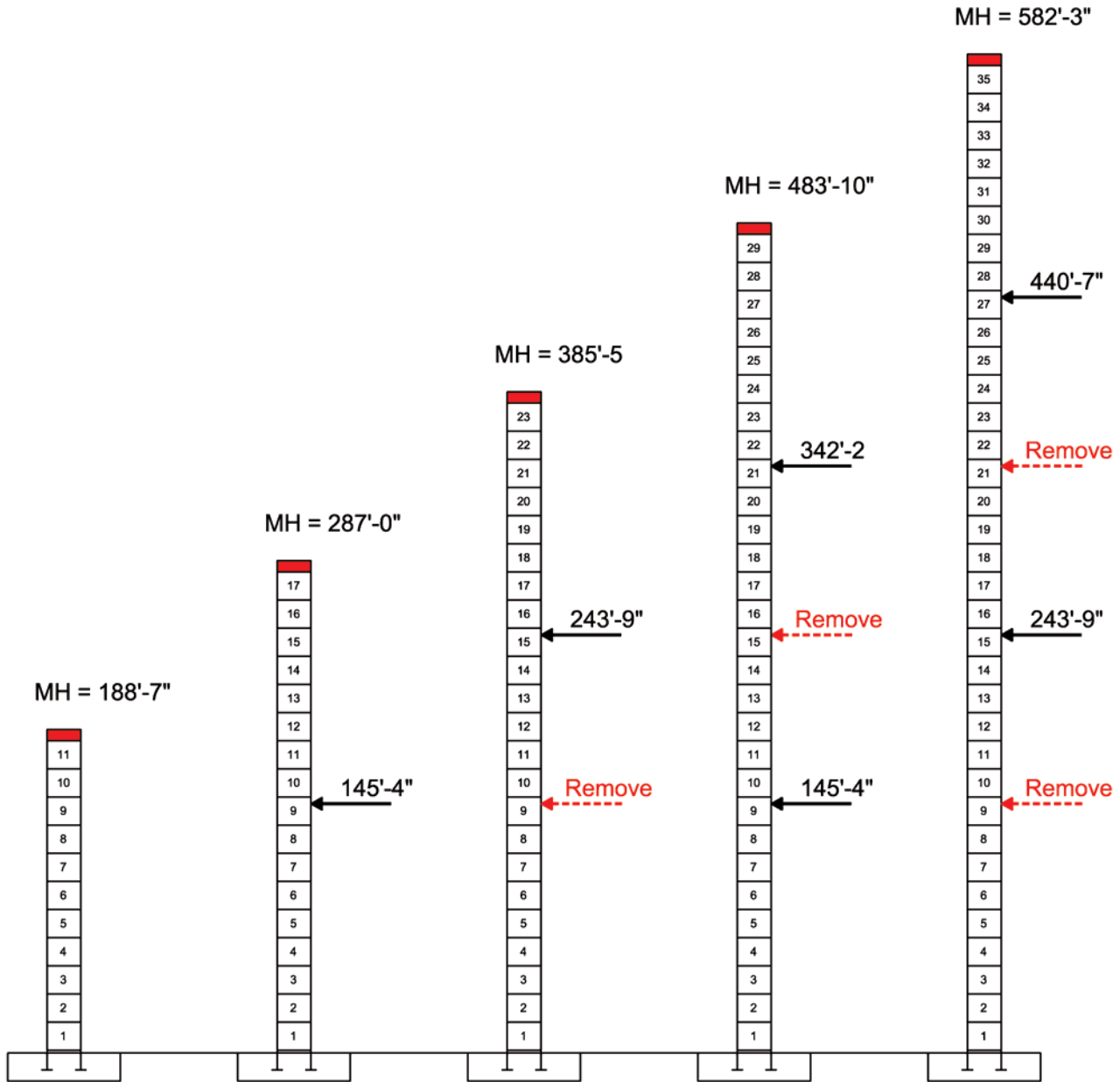


Climb Schedule Using Standard KR839 Mast

Jib Configurations: L30 thru L60 (98'-5" thru 196'-10")

P800A Foundation Anchors

This panel is 7.625"

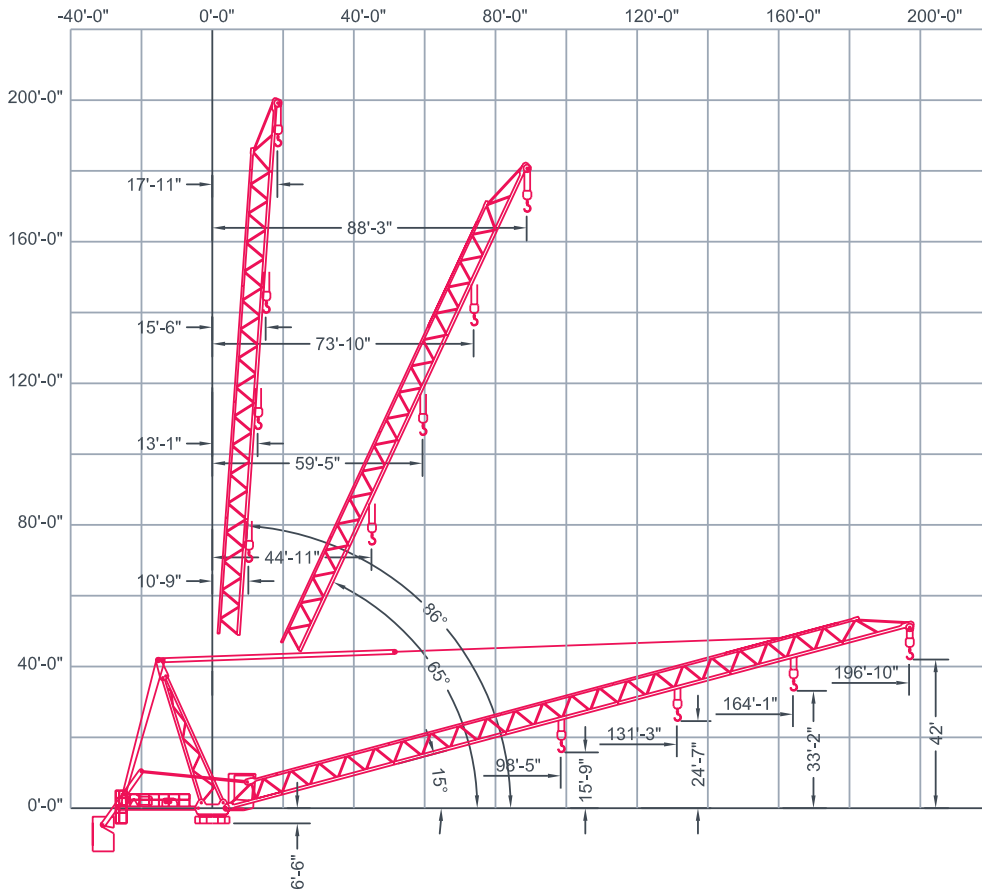


Rated Load Chart

Hook Radius	Capacity (lbs)			
	Jib Lengths			
	196'-10"	164'-1"	131'-3"	98'-5"
20'-0"	26,455	39,683	52,910	52,910
30'-0"	26,455	39,683	52,910	52,910
40'-0"	26,455	39,683	52,910	52,910
50'-0"	26,455	39,683	52,910	52,910
60'-0"	26,455	39,683	52,910	52,910
70'-0"	26,455	39,683	46,442	49,387
80'-0"	26,455	38,376	40,320	42,897
90'-0"	25,615	33,830	35,558	37,849
98'-5"	23,314	30,717	32,297	34,392
100'-0"	22,927	30,194	31,749	
110'-0"	20,727	27,218	28,632	
120'-0"	18,894	26,082	26,455	
130'-0"	17,343	23,978	25,160	
131'-3"	17,168	23,741	24,912	
140'-0"	16,014	22,175		
150'-0"	14,862	20,612		
160'-0"	13,854	19,245		
164'-1"	13,481	18,739		
170'-0"	12,964			
180'-0"	12,174			
190'-0"	11,466			
196'-10"	11,023			

Max. Load Radius				
From	17'-11"	15'-6"	13'-1"	10'-9"
To	87'-3"	77'-6"	61'-10"	65'-7"

Note:
Red line indicates the division between 1-part line and 2-part line.



MR 415-H24

Manitowoc
Crane Group

This panel is 7.625"

Mechanical Data

Function	Hoist Type	Speed vs Weight	1-part				2-part				Motor (hp)	Motor (kW)	Rope Length (ft)
			1st Gear	2nd Gear	3rd Gear	4th Gear	1st Gear	2nd Gear	3rd Gear	4th Gear			
Hoist	215 LBR 60	ft/min lbs	211 26,455	334 16,094	532 9,480	845 5,181	105 52,911	167 33,069	266 19,621	422 11,023	215	158	1,903
Boom	150 VBR	15° to 86°	1 min 16 sec								145	108	
Swing	R - 10.5	rpm	0.80								2 x 7.1	2 x 5.3	

Power Requirements: 480 V (+6% or -10%) 60 Hz measured at turn table.

Amperage: 215 LBR 60: 434 Amp (3 phase service with ground)

Note: Values given under "Rope Length" are for drum spooling capacity only.

Manitowoc Crane Group - Americas

Shady Grove, Pennsylvania Facility
 1565 Buchanan Trail East
 Shady Grove, PA 17256-0021, USA
 Tel: [Int + 001] 717 597 8121
 Fax: [Int + 001] 717 597 4062

MR 415-H24

