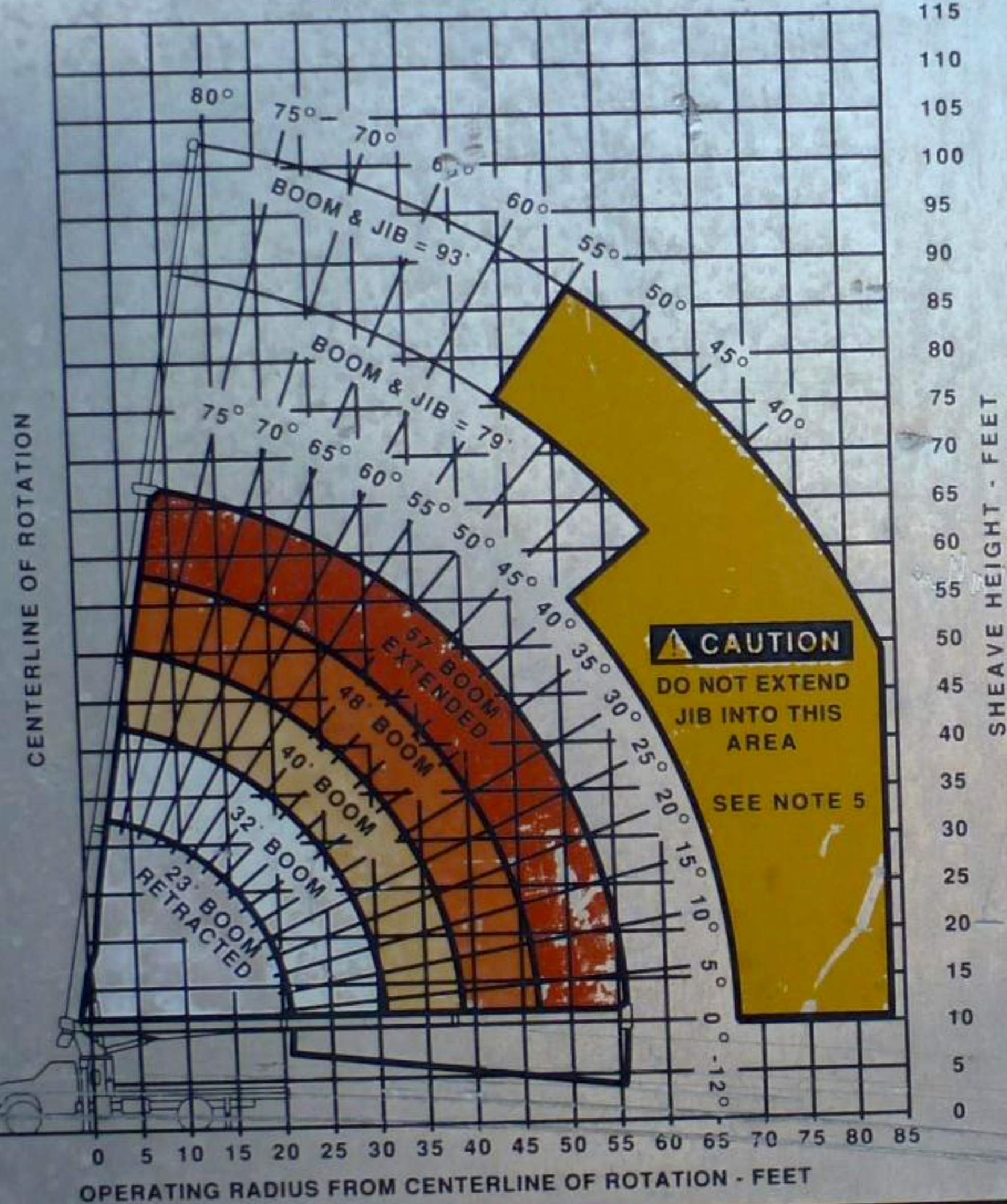
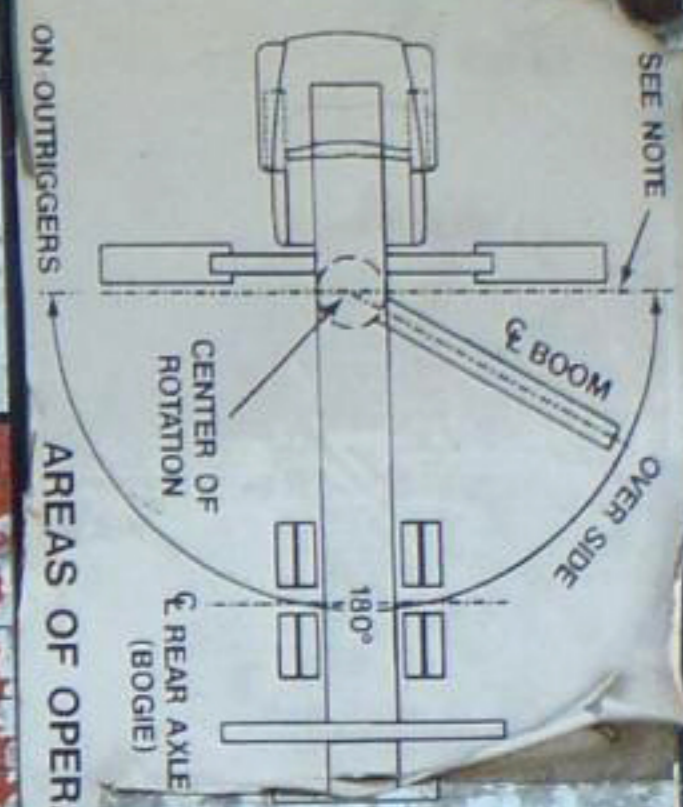
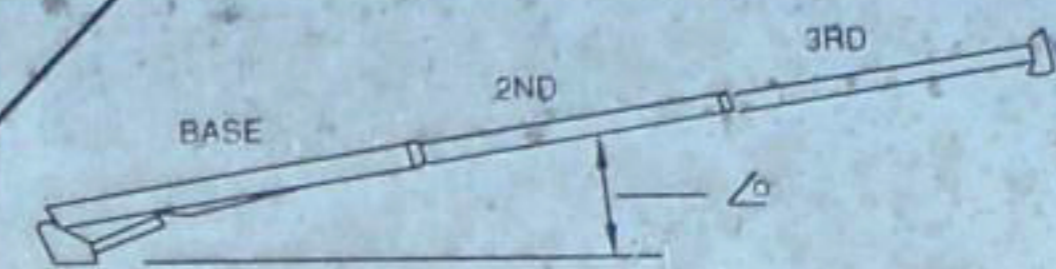


**RANGE DIAGRAM**



LOAD RATINGS IN LBS. WITH OUTRIGGERS EXTENDED

OR T A U S T S I N F G T	LOADED BOOM ANGLE		BOOM LENGTH							
	∠	23 FT	∠	32 FT	∠	40 FT	∠	48 FT	∠	57 FT
4	78	20000								
5	76	18000								
8	68	12230	75	11680	78	11600				
10	62	10320	71	9750	75	9440	78	8450	78	7000
12	56	8870	68	8390	72	8080	76	7680	76	6300
14	49	7780	64	7550	70	7200	74	6950	74	5750
16	44	7030	59	6700	66	6370	71	6170	70	4740
20	25	5320	50	5320	60	5180	66	4990	66	4570
21	4	3700	48	5190	58	4940	65	4750	69	4570
25			36	4220	50	4150	59	3990	65	3820
31			3	2200	38	3160	50	3100	58	3030
35					27	2630	43	2630	53	2590
38					3	1600	37	2290	48	2290
40							33	2120	45	2120
46							3	1100	36	1670
50									27	1450
55									3	700



- REDUCTIONS FROM RATED LOADS FOR LOAD HANDLING DEVICES
- AUXILIARY BLOCK: 50 LBS
  - OVERHAUL BALL: 125 LBS
  - CRANE LOAD BLOCK: 150 LBS
  - SWING AROUND JIB: (STOWED) 400 LBS

JIB CAPACITIES FOR ALL BOOM LENGTHS

LOADED BOOM ANGLE	40°	45°	50°	55°	60°	65°	70°	75°	78°
RETRACTED 22 FT JIB	500	600	750	1000	1200	1500	2000	2600	3150
EXTENDED 36 FT JIB	SEE NOTE 5			550	650	850	1100	1480	1900

**⚠ DANGER**

- THE OPERATOR MUST READ AND UNDERSTAND THE OWNER'S MANUAL BEFORE OPERATING THIS CRANE
- POSITIONING OR OPERATION OF CRANE BEYOND AREAS SHOWN ON THIS CHART IS NOT INTENDED OR APPROVED EXCEPT WHERE SPECIFIED IN OWNER'S MANUAL.
- LOADED BOOM ANGLES AT SPECIFIED BOOM LENGTHS GIVE ONLY AN APPROXIMATION OF THE OPERATING RADIUS. THE BOOM ANGLE BEFORE LOADING SHOULD BE GREATER TO ACCOUNT FOR DEFLECTIONS. DO NOT EXCEED THE OPERATING RADIUS FOR RATED LOADS.
- USE RATING OF NEXT LONGER BOOM FOR BOOM LENGTHS NOT SHOWN. USE RATING OF NEXT GREATER RADIUS FOR LOAD RADIUS NOT SHOWN.
- BOOM MUST BE FULLY RETRACTED WHEN JIB IS ERECTED BEFORE LOWERING BELOW MINIMUM ANGLE. RETRACTED JIB HAS NO LIFTING CAPACITY BELOW A 40° BOOM ANGLE. EXTENDED JIB HAS NO LIFTING CAPACITY BELOW A 55° BOOM ANGLE.
- USE RATING OF NEXT LOWER BOOM ANGLE FOR BOOM ANGLES NOT SHOWN ON JIB LOAD RATING CHART.
- LIFTING OFF THE MAIN BOOM POINT WHILE THE SWING AROUND JIB IS ERECTED IS NOT INTENDED OR APPROVED.
- CRANE LOAD RATINGS ON OUTRIGGERS ARE BASED ON FREELY SUSPENDED LOADS WITH THE MACHINE LEVELED AND STANDING ON A FIRM UNIFORM SUPPORTING SURFACE. NO ATTEMPT SHALL BE MADE TO MOVE A LOAD HORIZONTALLY ON THE GROUND IN ANY DIRECTION.
- PRACTICAL WORKING LOADS DEPEND ON SUPPORTING SURFACE, WIND AND OTHER FACTORS AFFECTING STABILITY SUCH AS HAZARDOUS SURROUNDINGS, EXPERIENCE OF PERSONNEL, AND PROPER HANDLING. MUST ALL BE TAKEN INTO ACCOUNT BY THE OPERATOR.
- THE MAXIMUM LOAD WHICH MAY BE TELESCOPED IS LIMITED BY HYDRAULIC PRESSURE, BOOM ANGLE, AND BOOM LUBRICATION. IT IS SAFE TO ATTEMPT TO TELESCOPE ANY LOAD WITHIN THE LIMITS OF THE LOAD RATING CHART.

**INFORMATION**

- DEDUCTIONS MUST BE MADE FROM RATED LOADS FOR STOWED JIB, OPTIONAL ATTACHMENTS, HOOKS AND LOADBLOCKS (SEE DEDUCTION CHART). WEIGHTS OF SLINGS AND ALL OTHER LOAD HANDLING DEVICES SHALL BE CONSIDERED A PART OF THE LOAD.
- CRANE LOAD RATINGS WITH OUTRIGGERS ARE BASED ON OUTRIGGERS AND STABILIZERS EXTENDED AND SET WITH ALL LOAD REMOVED FROM THE CARRIER WHEELS.
- LOAD RATINGS DO NOT EXCEED 85% OF TIPPING LOAD.

**DEFINITIONS**

- OPERATING RADIUS IS THE HORIZONTAL DISTANCE FROM THE AXIS OF ROTATION TO THE CENTER OF THE VERTICAL HOIST LINE OR LOAD HOOK WITH LOAD SUSPENDED.
- LOADED BOOM ANGLE AS SHOWN IN THE COLUMN HEADED BY ∠ IS THE INCLUDED ANGLE BETWEEN THE HORIZONTAL AND LONGITUDINAL AXES OF THE BOOM BASE AFTER LIFTING RATED LOAD AT RATED RADIUS.

1 PART LINE	2 PART LINE	3 PART LINE
LOADS UP TO 7,600 LBS STD CABLE	LOADS UP TO 15,200 LBS STD CABLE	LOADS UP TO 22,800 LBS STD CABLE
5,400-LBS ROT RESISTANT CABLE	10,800 LBS ROT RESISTANT CABLE	16,200 LBS ROT RESISTANT CABLE

**⚠ CAUTION**

ANTI-TWO-BLOCK SYSTEM MUST BE IN GOOD OPERATING CONDITION BEFORE OPERATING CRANE. REFER TO OWNER'S MANUAL.

KEEP AT LEAST 3 WRAPS OF LOADLINE ON DRUM AT ALL TIMES.

USE ONLY 1/2" DIAMETER CABLE WITH MIN. 26,600 LB. (STD) OR 27,000 LB. (ROT. RES.) BREAKING STRENGTH ON THIS MACHINE