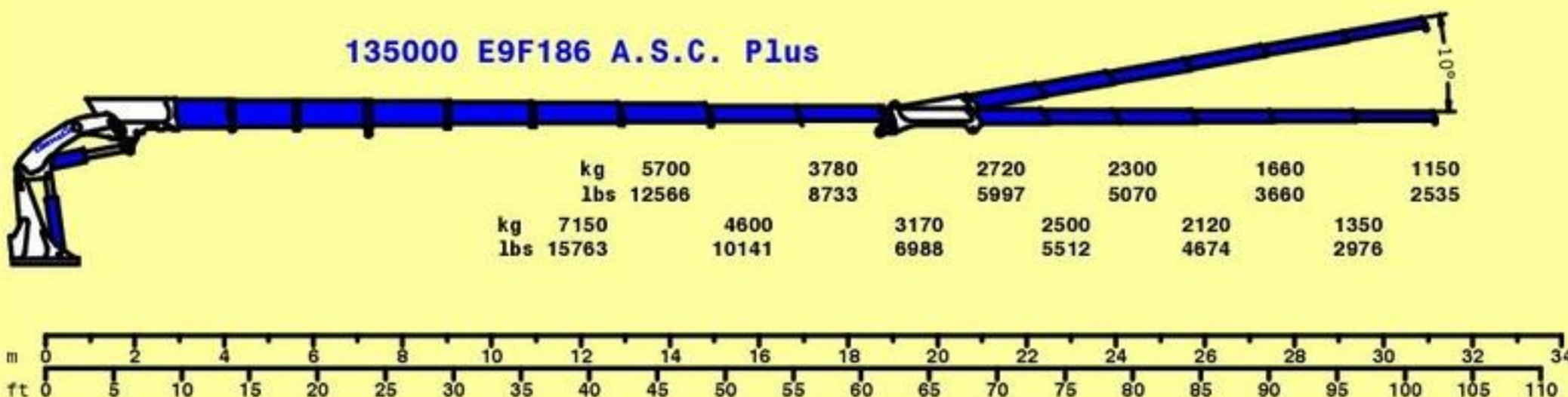


135000 E9F186 A.S.C. Plus



Technical specifications

Static moment at the turret pin	986048 (lbs/ft) 136300 (daN/m)
Hyd. boom length	102' 3" (in) 31160 (mm)
Length	8' 11" (in) 2715 (mm)
Width	8' 4" (in) 2550 (mm)
Height	9' 7" (in) 2925 (mm)
Weight (without oil and fitting)	32783 (lbs) 14870 (kg)
Lifting capacity	15763 (lbs) 7150 (kg)
Slew torque	94047 (lbs/ft) 13000 (daN/m)
Slewing speed	360° - 90 (° - sec) 390° - 90 (° - sec)
Outriggers extension	15' 9" + 14' 10" (in) 4812 + 4520 (mm)
Outriggers width	30' 7" (in) 9332 (mm)
Pump delivery	30 (us gal/min) 115 (lit/min)
Pressure	4408 (Psi) 310 (bar)
Oil tank capacity	118 (us gal) 450 (lit)

Standard equipment



Options

