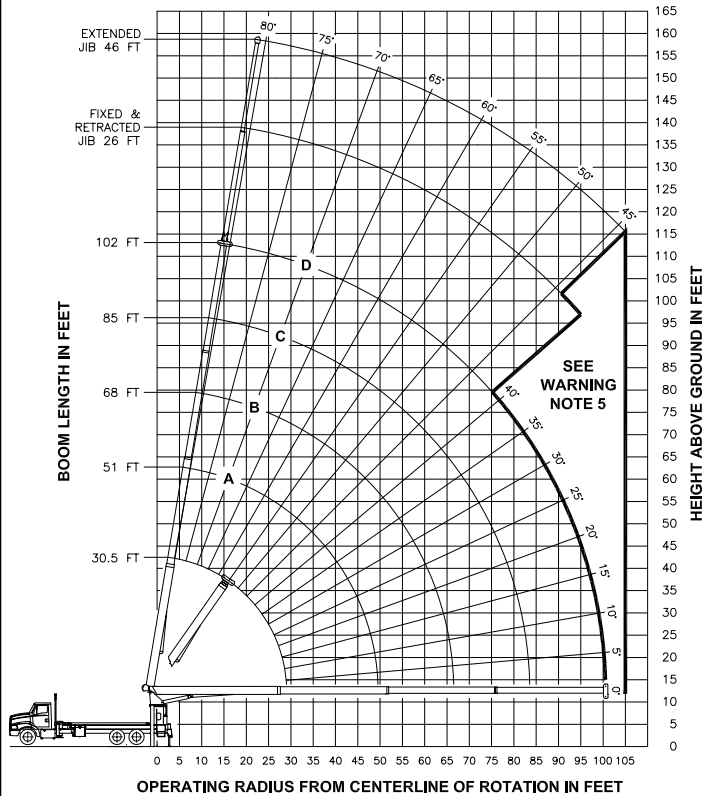


RANGE DIAGRAM



OPERATING RADIUS FROM CENTERLINE OF ROTATION IN FEET

LMI OPERATING CODES

SETTING	CRANE CONFIGURATION	SETTING	CRANE WITH PERSONNEL LIFTING PLATFORM
#1	--- MAIN BOOM	#5	--- PERSONNEL LIFTING PLATFORM ON MAIN BOOM
#2	--- FIXED JIB	#6	--- PERSONNEL LIFTING PLATFORM ON FIXED JIB
#3	--- TELESCOPIC JIB--RETRACTED	#7	--- PERSONNEL LIFTING PLATFORM ON TELESCOPIC JIB--RETRACTED
#4	--- TELESCOPIC JIB--EXTENDED	#8	--- PERSONNEL LIFTING PLATFORM ON TELESCOPIC JIB--EXTENDED

ALLOWABLE LINE PULL

1 PART	2 PART	3 PART	4 PART	5 PART	6 PART	7 PART	WARNING
8500 LBS	17000 LBS	25500 LBS	34000 LBS	42500 LBS	51000 LBS	60000 LBS	9/16" 6X25 IWRC (3.5:1 SF) - 29750 LBS MIN BREAKING STRENGTH 9/16" ROT RESISTANT (5.0:1 SF) - 37000 LBS MIN BREAKING STRENGTH
7400 LBS	14800 LBS	22200 LBS	29600 LBS	37000 LBS	44400 LBS	51800 LBS	

DEDUCTIONS FROM RATED LOADS FOR LOAD HANDLING DEVICES SUPPLIED BY MANITEX

AUXILIARY BLOCK	50 LBS
WIRELINE SHEAVE HEAD	100 LBS
AUXILIARY WINCH	200 LBS
OVERHAUL BALL	SEE OVERHAUL BALL MFR. NAMEPLATE
LOAD BLOCK	SEE BLOCK MFR. NAMEPLATE
HOSE REEL	140 LBS
SWING AROUND JIB	SEE LOAD CHART

WARNING
LIFTING OFF THE MAIN BOOM POINT WHILE THE JIB IS ERRECTED IS NOT INTENDED OR APPROVED.

LOAD RATINGS IN LBS WITH OUTRIGGERS AND STABILIZERS EXTENDED

LMI CODE #1	LMI CODE #1				JIB LOAD RATINGS WITH OUTRIGGERS AND STABILIZERS EXTENDED			
	LMI CODE #1				FIXED JIB	TELESCOPIC JIB		
	A	B	C	D	LMI CODE #2	LMI CODE #3	LMI CODE #4	
30.5 FT	51 FT	68 FT	85 FT	102 FT	26 FT	26 FT	46 FT	
5	8	10	12	15				
60000	39690	33510	29120	24440				
79	22500	21710	20590					
16910	15830	14420	10500					
13850	12840	12180	9650					
11700	10770	10140	76					
9770	9240	8640	73					
7510	7720	7490	70					
5910	6110	6220	66					
4920	56	5030	63					
36	3990	51	4100	60				
28	3250	47	3360	60				
15	2630	41	2760	53				
36	2250	49	2320	70				
29	1820	45	1890	75				
19	1450	40	1530	80				
36	1210	85	51	1320	51	1030	59	
29	930	90	48	1050	48	750	56	
22	690	95	45	800	45	500	54	
100	42	580					51	
105							48	

490 LBS	290 LBS	220 LBS	180 LBS	150 LBS	DEDUCTIONS FOR STOWED FIXED JIB		
730 LBS	440 LBS	330 LBS	260 LBS	220 LBS	DEDUCTIONS FOR STOWED TELESCOPIC JIB		

WARNING

- THE OPERATOR MUST READ AND UNDERSTAND THE OWNER'S MANUAL BEFORE OPERATING THIS CRANE.
- POSITIONING OR OPERATION OF CRANE BEYOND AREAS SHOWN ON THIS CHART IS NOT INTENDED OR APPROVED EXCEPT WHERE SPECIFIED IN OWNER'S MANUAL.
- LOADED BOOM ANGLES AT SPECIFIED BOOM LENGTHS GIVE ONLY AN APPROXIMATION OF THE OPERATING RADIUS. THE BOOM ANGLE BEFORE LOADING SHOULD BE GREATER TO ACCOUNT FOR DEFLECTIONS. DO NOT EXCEED THE OPERATING RADIUS FOR RATED LOADS.
- THE OPERATING RADIUS SHOWN IN THE JIB RATING CHART IS FOR FULLY EXTENDED BOOM ONLY. WHEN BOOM IS NOT FULLY EXTENDED, USE ONLY LOADED BOOM ANGLE TO DETERMINE LOAD RATING OF JIB.
- BOOM MUST BE FULLY RETRACTED WHEN JIB IS ERRECTED, BEFORE LOWERING BOOM THRU THIS AREA.
- FOR BOOM ANGLES NOT SHOWN ON JIB LOAD RATING CHART, USE RATING OF NEXT LOWER BOOM ANGLE.
- FOR BOOM LENGTHS NOT SHOWN, USE RATING OF NEXT SHORTER OR LONGER BOOM LENGTH, WHICHEVER IS LESS. FOR RADI NOT SHOWN, USE RATING OF NEXT LONGER RADIUS.
- CRANE LOAD RATINGS ON OUTRIGGERS ARE BASED ON FREELY SUSPENDED LOADS WITH THE MACHINE LEVELED AND STANDING ON A FIRM UNIFORM SUPPORTING SURFACE. NO ATTEMPT SHALL BE MADE TO MOVE A LOAD HORIZONTALLY ON THE GROUND IN ANY DIRECTION.
- PRACTICAL WORKING LOADS DEPEND ON SUPPORTING SURFACE, WIND, AND OTHER FACTORS AFFECTING STABILITY SUCH AS HAZARDOUS SURROUNDINGS, EXPERIENCE OF PERSONNEL, AND PROPER HANDLING, ALL OF WHICH MUST BE TAKEN INTO ACCOUNT BY THE OPERATOR.
- THE MAXIMUM LOAD WHICH MAY BE TELESCOPED IS LIMITED BY HYDRAULIC PRESSURE, BOOM ANGLE, AND BOOM LUBRICATION. IT IS SAFE TO ATTEMPT TO TELESCOPE ANY LOAD WITHIN THE LIMITS OF THE LOAD RATING CHART. BOOM MUST BE FULLY RETRACTED AGAINST BOOM STOPS AT ALL TIMES WHEN LIFTING MINIMUM BOOM LENGTH CAPACITY LOADS.

INFORMATION

- DEDUCTIONS MUST BE MADE FROM RATED LOADS FOR STOWED JIB, OPTIONAL ATTACHMENTS, HOOKS, AND LOAD-BLOCKS (SEE DEDUCTION CHART). WEIGHTS OF SLINGS AND ALL OTHER LOAD HANDLING DEVICES SHALL BE CONSIDERED A PART OF THE LOAD.
- CRANE LOAD RATINGS WITH OUTRIGGERS ARE BASED ON OUTRIGGERS AND STABILIZERS EXTENDED AND SET WITH MACHINE LEVELED.
- LOAD RATINGS ABOVE THE HEAVY LINE ARE STRUCTURALLY LIMITED CAPACITIES. LOAD RATINGS BELOW THE HEAVY LINE ARE STABILITY LIMITED CAPACITIES AND DO NOT EXCEED 85% OF TIPPING.

DEFINITIONS

- OPERATING RADIUS IS THE HORIZONTAL DISTANCE FROM THE AXIS OF ROTATION TO THE CENTER OF THE VERTICAL HOIST LINE OR TACKLE WITH LOAD APPLIED.
- LOADED BOOM ANGLE AS SHOWN IN THE COLUMN HEADED BY α , IS THE INCLUDED ANGLE BETWEEN THE HORIZONTAL AND LONGITUDINAL AXES OF THE BOOM BASE AFTER LIFTING RATED LOAD AT RATED RADIUS.

Manitex

MODEL
102WL

CRANE MEETS ANSI B30.5
REQUIREMENTS

7300096-006 NR

