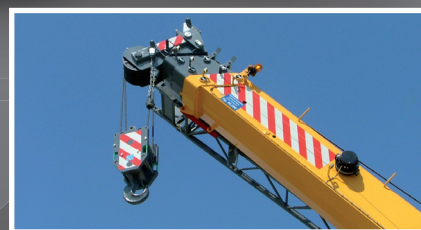
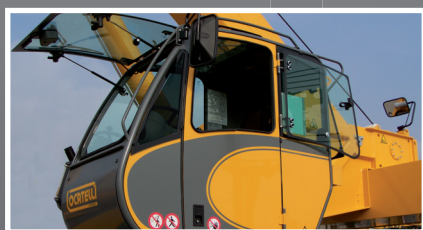


<b>Portata</b> <i>Capacity</i>	65 t
<b>Lunghezza max braccio</b> <i>Max boom length</i>	32,3 m
<b>Altezza max</b> <i>Max height</i>	35,40 - 52,90 m
<b>Nr. assi</b> <i>Axles</i>	2
<b>Trazione / Sterzo</b> <i>Drive / Steering</i>	4x4x4
<b>Pneumatici</b> <i>Tyres</i>	23.50 x 25
<b>Motore</b> <i>Engine</i>	CATERPILLAR C6.6 168 kW @ 2.200 rpm 986 Nm @ 1.400 rpm
<b>Velocità max</b> <i>Max speed</i>	37 km/h
<b>Dimensioni</b> <i>Dimensions</i>	m 11,97x2,94x3,65 H
<b>Peso</b> <i>Weight</i>	41.800 kg

# LOCATELLI

CRANE



## GRIL 8700T >>

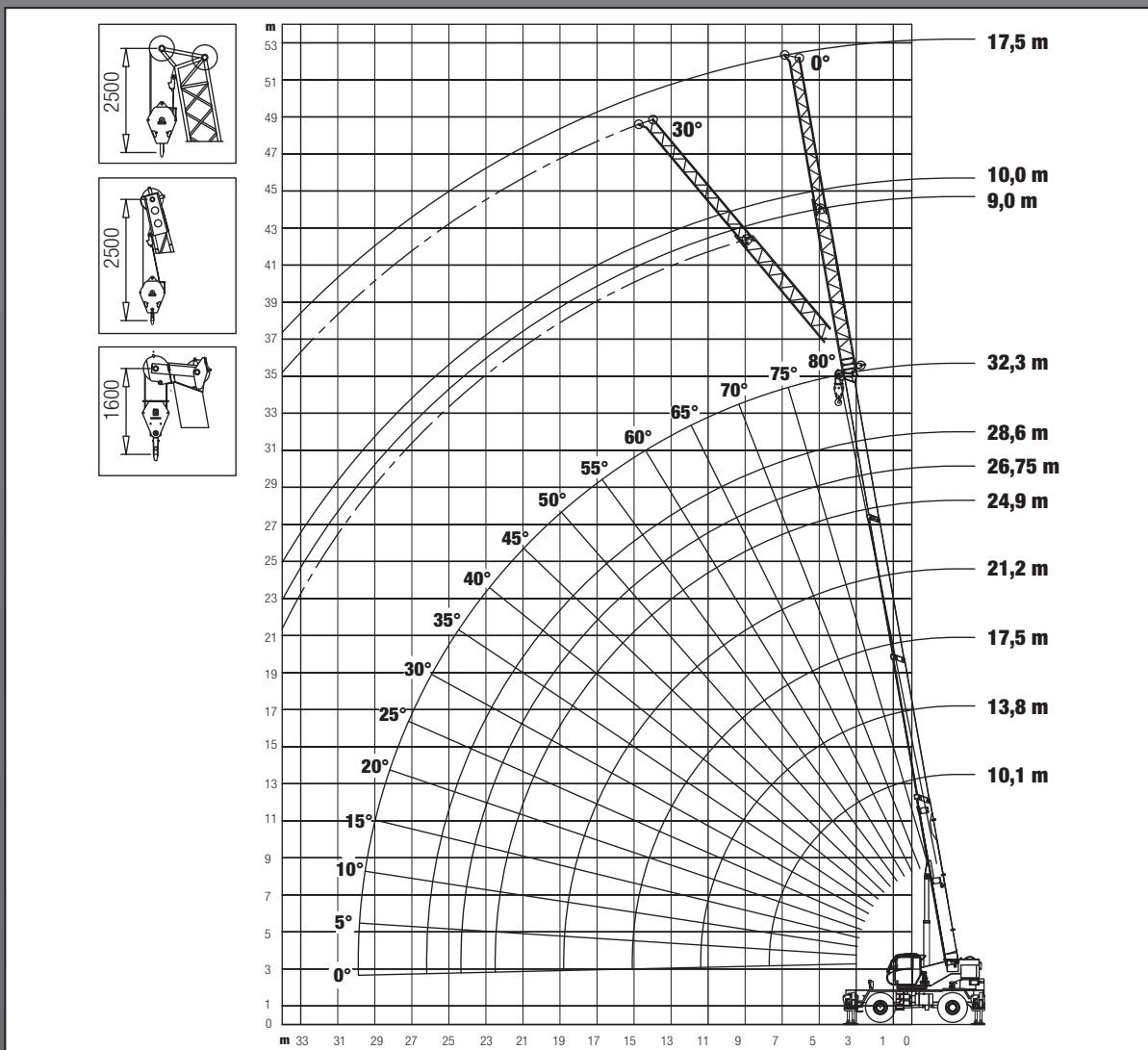
>> [www.locatelllicrane.com](http://www.locatelllicrane.com)

Via Lombardia n. 32 - 24030 Mapello (BG) - Italy - Tel. +39 035 4945066 - Fax +39 035 4945549 - [info@locatelllicrane.com](mailto:info@locatelllicrane.com)

# DIAGRAMMA DI LAVORO WORKING DIAGRAM






04/2012



## PORTATE BRACCIO TELESCOPICO LIFTING CAPACITIES TELESCOPIC BOOM



 10,1 m - 32,3 m	 m	10,1 m	13,8 m	17,5 m	21,2 m	24,9 m	26,75 m	28,6 m	32,3 m	 m
		<b>3,0</b>	65,0							
<b>4,0</b>	44,8									<b>4,0</b>
<b>5,0</b>	35,4									<b>5,0</b>
<b>6,0</b>	29,1									<b>6,0</b>
<b>7,0</b>	24,8									<b>7,0</b>
<b>8,0</b>										<b>8,0</b>
<b>9,0</b>										<b>9,0</b>
<b>10,0</b>										<b>10,0</b>
<b>11,0</b>										<b>11,0</b>
<b>13,0</b>										<b>13,0</b>
<b>15,0</b>										<b>15,0</b>
<b>17,0</b>										<b>17,0</b>
<b>19,0</b>										<b>19,0</b>
<b>21,0</b>										<b>21,0</b>
<b>23,0</b>										<b>23,0</b>
<b>25,0</b>										<b>25,0</b>
<b>27,0</b>										<b>27,0</b>
<b>29,0</b>										<b>29,0</b>



100 %



360°



8 t

