

# 5005EH

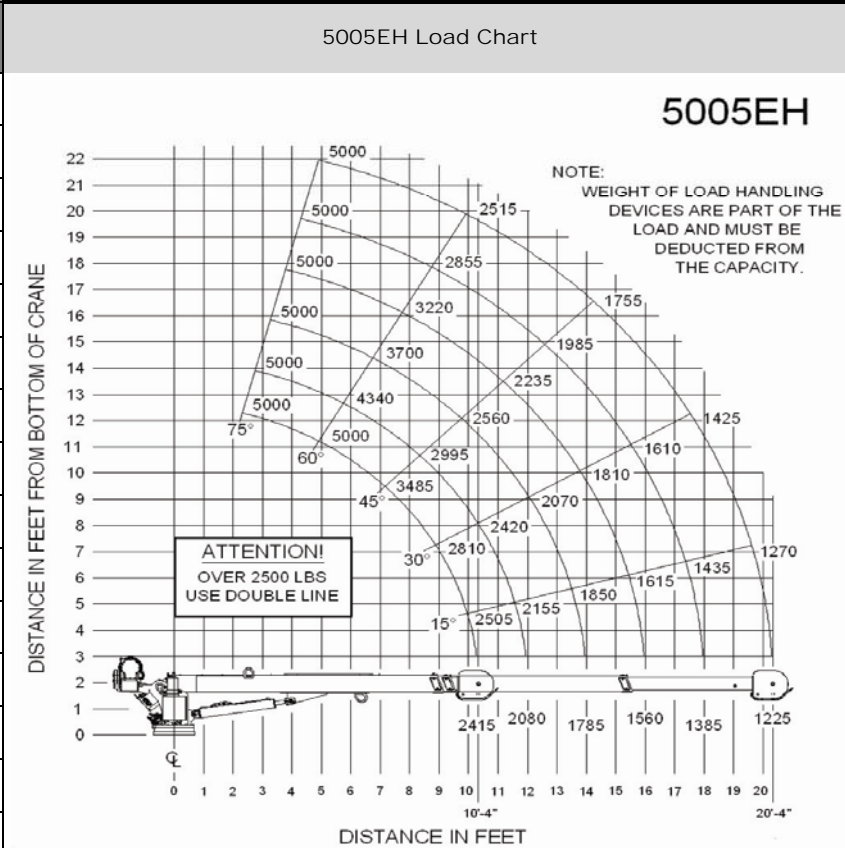
## Specifications

Weight	1,455 lbs (627 kgs)
Length	13' 1" (3.98 m)
Width	1' 9.75" (.55 m)
Height	2' 11.75" (.90 m)
Base Plate Dimensions	16.75" x 16.75" (.42 m x .42 m)
Boom Down	18-26 seconds (full stroke of cylinder)
Boom Retract	TBD
Full 360° Boom Rotation	64-78 seconds

\*Truck must be equipped with appropriate outriggers, minimum 75-amp alternator, minimum 100-minute reserve capacity H.D. maintenance-type battery with 500 cold cranking amp capacity.

## Lifting Capacities

Reach	Manual/Power Boom Extension
3' (.9 m)	5,000 lbs (2,268 kgs)
4' (1.22 m)	5,000 lbs (2,268 kgs)
5' (1.5 m)	5,000 lbs (2,268 kgs)
6' (1.8 m)	4,165 lbs (1,890 kgs)
7' (2.1 m)	3,570 lbs (1,619 kgs)
8' (2.4 m)	3,125 lbs (1,417 kgs)
9' (2.7 m)	2,775 lbs (1,259 kgs)
10' (3.0 m)	2,500 lbs (1,134 kgs)
11' (3.3 m)	2,270 lbs (1,029 kgs)
12' (3.7 m)	2,080 lbs (943 kgs)
13' (3.9 m)	1,930 lbs (871 kgs)
14' (4.3 m)	1,785 lbs (810 kgs)
15' (4.6 m)	1,665 lbs (755 kgs)
16' (4.9 m)	1,560 lbs (707 kgs)
17' (5.2 m)	1,470 lbs (667 kgs)
18' (5.5 m)	1,385 lbs (629 kgs)
19' (5.8 m)	1,315 lbs (596 kgs)
20' (6.1 m)	1,250 lbs (567 kgs)



Auto Crane Company / 4707 N. Mingo Rd. Tulsa, OK 74117  
918-836-0463 / AutoCrane.com

