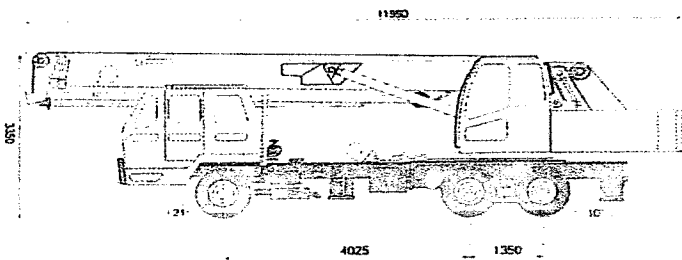


# QY150

## 全液压汽车起重机

### 尺寸参数 Dimensions

整机全长 Overall length	mm	11990
整机全宽 Overall width	mm	2500
整机全高 Overall height	mm	3350



机外形尺寸 Outline dimensions

### 重量参数 Weight

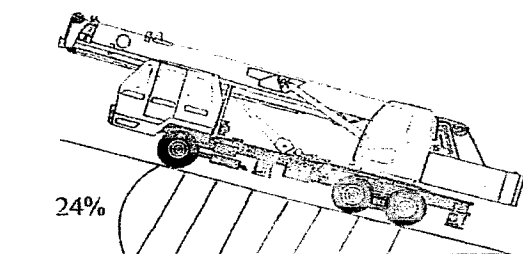
行驶状态整机质量 Dead weight in travel state	kg	22900
轴荷 Axle load		
前轴 Front Axle	kg	5240
后轴 Rear Axle	kg	17660

### 动力参数 Power

发动机型号 Engine model	上柴 D6114 WD415.21		
发动机额定功率 Engine rated output	kW/(r/min)	158/2200	155/2200
发动机额定扭矩 Engine rated torque	N.m/(r/min)	790/1400	820/1400
发动机额定转速 Max. travel speed	r/min	2200	2200

### 行驶参数 Travel

行驶速度 Max. travel speed	km/h	70	70
最小转弯直径 Min. turning diameter	mm	20000	20000
最小离地间隙 Min. ground clearance	mm	270	270
接近角 Approach angle		21°	21°
离去角 Departure angle		10°	10°
制动距离(车速为 30km/h) Braking distance(at 30km/h)	m	9.5	9.5
最大爬坡能力 Max. Gradeability	%	24%	26%
百公里油耗 Fuel consumption of 100km	L	~35	~35



直径20米

### 主要性能参数 Lifting performance

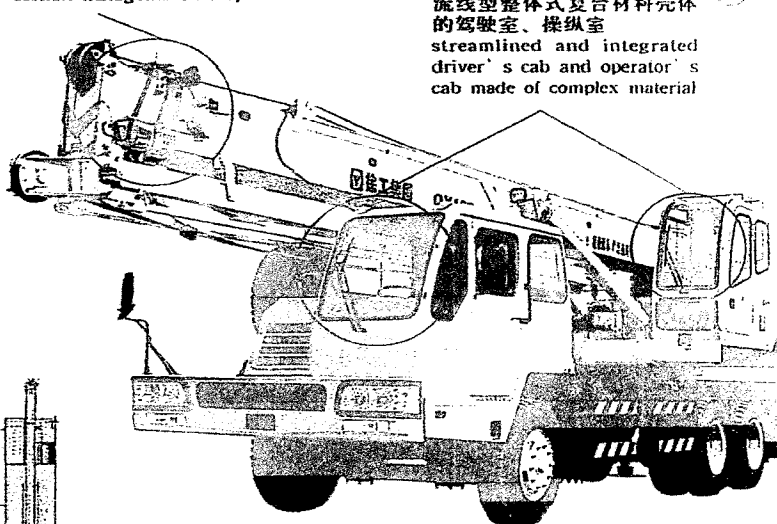
最大额定总起重量 Max. Total rated lifting load	t	16
最小额定幅度 Min. rated working radius	m	3
转台尾部回转半径 Turning radius at swing table tail	m	3.12
最大起重力矩 Max. load moment		
基本臂 Base boom	kN.m	711
最长主臂 Full-extend boom	kN.m	449
最长主臂+副臂 Full-extend boom+Jib	kN.m	186
支腿距离 Outrigger extension distance		
纵向/横向 Longitudinal/Lateral	mm	4600/5400
起升高度 Lifting height		
基本臂 Base boom	m	9.9
最长主臂 Full-extend boom	m	23.6
最长主臂+副臂 Full-extend boom+Jib	m	30.8

### 工作速度参数 Working speed

起重臂全程起臂时间 Boom raising time	s	60
起重臂全伸时间 Boom Full extending time	s	75
最大回转速度 Max slewing speed	r/min	2.5
支腿伸缩时间 Outrigger telescoping time		
水平支腿同时伸/缩 Outrigger beam extending/retracting synchronously	s	28/26
垂直支腿同时伸/缩 Outrigger jack extending/retracting synchronously	s	32/30
起升速度(单绳) Hoisting speed(single rope)		
主起升机构满载/空载 Main winch with full load/no load	m/min	54/100
副起升机构满载/空载 Auxiliary winch with full load	m/min	54/100

### 三节六边形伸缩式吊臂 3-section hexagonal telescopic boom

流线型整体式复合材料壳体的驾驶室、操纵室  
streamlined and integrated driver's cab and operator's cab made of complex material



# QY16C FULL HYDRAULIC TRUCK CRANE

QY16C 主臂起重性能表 Total rated lifting load for boom

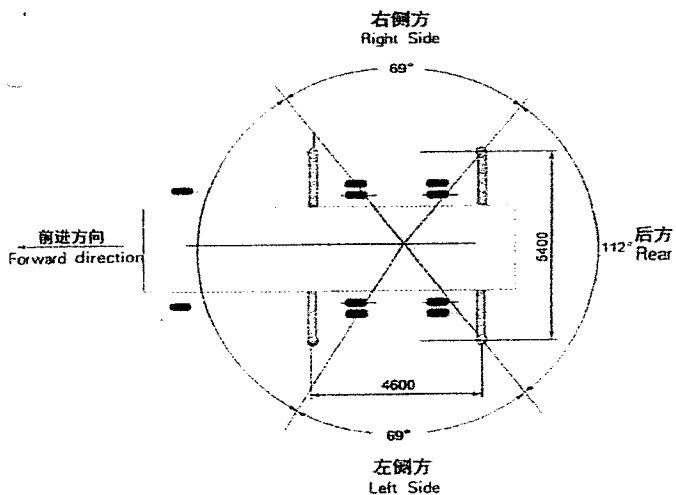
工作幅度 working radius m	全伸支腿 (侧方、后方作业) full-extend outrigger with boom at the side or the rear							
	基本臂 Base boom 9.8m		中长臂 Mid-extend boom 16.9m		全伸臂 Full-extend boom 24m		主臂+副臂 Full-extend boom+Jib 24+7m	
	起重量 Lifting Load (kg)	起升高度 Lifting Height (m)	起重量 Lifting Load (kg)	起升高度 Lifting Height (m)	起重量 Lifting Load (kg)	起升高度 Lifting Height (m)	起重量 Lifting Load (kg)	起升高度 Lifting Height (m)
3.0	16000	9.9						
3.5	16000	9.7						
4.0	16000	9.5	12000	17.1				
4.5	14900	9.2	11400	16.9				
5.0	14100	8.8	10800	16.8				
5.5	13200	8.4	10200	16.6				
6.0	11520	7.8	9700	16.3				
	8610	6.6	8700	15.8	5900	23.6		
8.0	6700	4.8	6900	15.2	5500	23.2		
9.0			5610	14.6	5100	22.8	2000	30.8
10.0			4640	13.7	4500	22.3	1900	30.5
12.0			3070	11.7	3380	21.1	1550	29.6
14.0			2290	8.6	2580	19.7	1300	28.6
16.0					1970	17.8	1060	27.4
18.0					1520	15.5	830	26.0
20.0					1200	12.4	600	24.3
22.0							370	22.3
24.0							170	19.8
吊钩重量 Weight of hook block	216kg				48kg			
倍率 ratio of line	6		5		3		1	

注: 对表中起重量的说明:

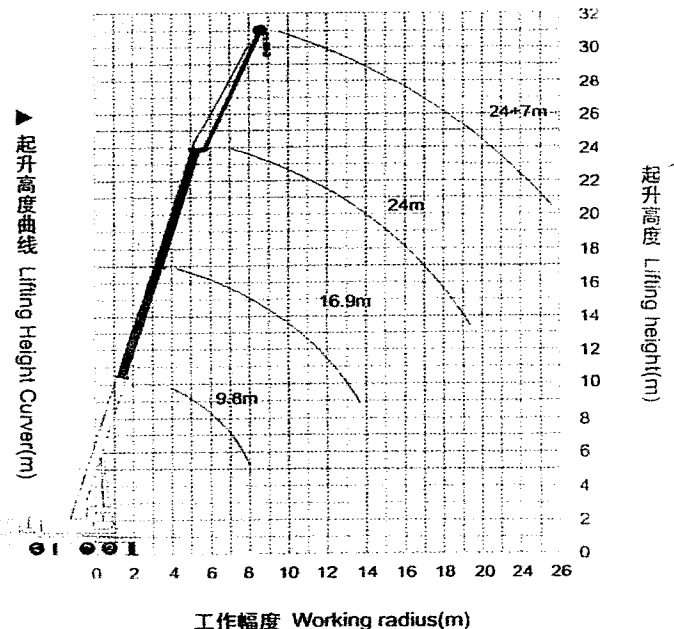
- ◆ (1)表中额定起重量所表示的数值, 是在平整的坚固地面上本起重机能够保证的最大起重量。
- ◆ (2)表中额定起重量包括吊钩和吊具的重量。
- ◆ (3)表中的工作幅度是包括吊臂的变形量在内的实际值: 应以工作幅度为依据进行起重作业, 起升高度为参考值。
- ◆ (4)主臂端部若装有副臂时, 主吊钩起重量应将表中相应数值减少 400kg。
- ◆ (5)臂端单滑轮的起重性能用 24m 的主臂, 但以 2t 为其上限。
- ◆ (6)起重作业前, 必须完全支好支腿。
- ◆ (7)允许风力达 6 级以下的情况下作业

Notes:

- ◆ (1)The data in the table are the max. lifting capacity when the crane is set up on level and firm ground.
- ◆ (2)The total rated lifting load in the table includes weight of hook block and slings.
- ◆ (3)The working radius in the table is the actual value including boom deflection under load. So lifting operation should be performed according to the working radius, in reference of lifting height.
- ◆ (4)Lifting capacity of main hook block should be subtracted 400kg if the jib is mounted on the main boom head.
- ◆ (5)The lift capability of the single pulley at the top of the boom is same to the 24m main boom, but its top limit is 2t.
- ◆ (6)You must set up the legs safely before you begin to work.
- ◆ (7)permitting to work under the 6 grade wind.



▲ 工作区域划分 Working Area



工作幅度 Working radius(m)

注: 公司保留随技术改进而修改技术参数及部件的权利  
All specifications are subject to technical modifications without notice