



33 TON MOBILIFT

by
LIFT SYSTEMS, INC.



***Global Leaders in Specialized
Lifting Equipment!***



MOBILIFT

33 TON

STANDARD EQUIPMENT

ENGINE:

GM 3.0L, 4 cylinder, 75 hp (56 Kw) propane engine

PUMP:

Sundstrand 40 series drive pump

CONTROL SYSTEM:

CARL (Computer Assisted Remote Lifting) Control System. Monitors Boom Angle, Boom Extension, Pressure, Counterweight Load Pin. Automatic Shutdown for overload conditions. Large easy to read display screen with push button navigation and dial adjustment.

CONTROLS:

Separate controls for each function. Combination of foot pedal, joystick, and push button controls allows for multiple functions to be performed at the same time.

DRIVE:

Rockwell planetary drive axle. Full hydrostatic system with spring applied brakes.

WHEELS:

Front: qty. (4)

Diameter: 28"

Width: 12"

Rear: qty. (2)

Diameter: 28"

Width: 12"

Replaceable polyurethane composition

OSCILLATING REAR STEERING BOX:

Keeps all steering wheels in contact with ground.

GRADABILITY:

Unloaded maximum grade is 26%

Loaded maximum grade is 15%

18,000 lbs of draw bar pull unloaded

TRAVEL SPEED UNLOADED:

High Gear: 2.75 mph

Low Gear: 0.75 mph

TELESCOPING COUNTERWEIGHT:

Standard counterweight section telescopes 4' using a hydraulic cylinder. Push button control.

HYDRAULIC RESERVOIR:

90 gallons (340 liters)

BOOM:

High strength three section telescoping boom with powered first section and manually extended second section .

Replaceable wear pads on all sliding sections.

BOOM LIFT CYLINDER:

Single cylinder capable of lifting and lowering with a full load. Integral safety holding valve. Spherical bearing ensures constant alignment with the boom.

BOOM TELESCOPE CYLINDER:

Single cylinder capable of telescoping the boom in and out with a full load. Integral safety holding valve.

WINCH:

High performance hydraulic winch. Integral, full load brake. 400' of high capacity 5/8" wire rope standard.

BLOCK:

35 (31.5) ton block standard. Low profile with swivel hook.

POWER BOOM LIFTING EYE:

Qty. (1) located on boom with 33 ton capacity.

WEIGHT:

32,000 lbs base unit

Standard "A" counterweight included

COUNTERWEIGHTS:

"A" - non-removable counterweight installed in unit

Four (4) additional counterweight plates included with

fork lift loops standard. Weight of each plate is 5,500 lbs.

Total of additional counterweight is 22,000 lbs.

TIE DOWN / LIFTING EYES:

Tie down / lifting eyes installed for securing unit during transport and for lifting of the unit.

DRIVER PROTECTION GUARD:

Structural overhead guard for operator protection.

OTHER STANDARD FEATURES:

Back up alarm, horn, strobe light, operator seat complete with safety belt and electric switch.

OPTIONAL EQUIPMENT

RADIO REMOTE CONTROL:

Radio remote control allows full machine functionality from a wireless radio remote. Allows operator optimal view of load. Emergency safety shutdown switch is standard.

ANTI-TWO-BLOCK DEVICE:

Safety device installed to prevent hook block from contacting boom.

JIB EXTENSION:

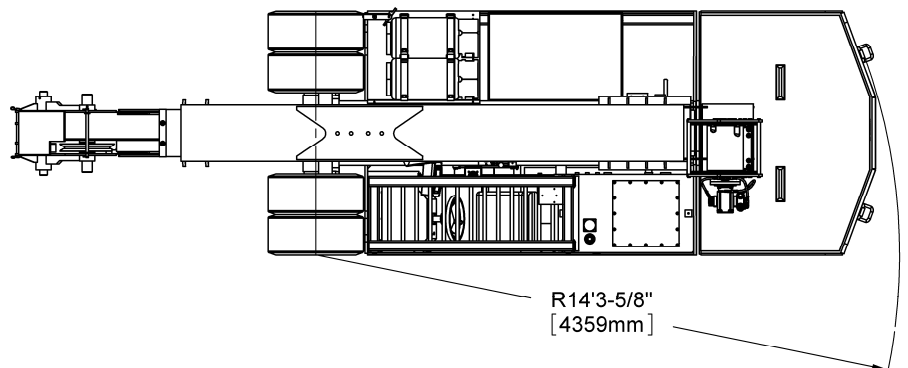
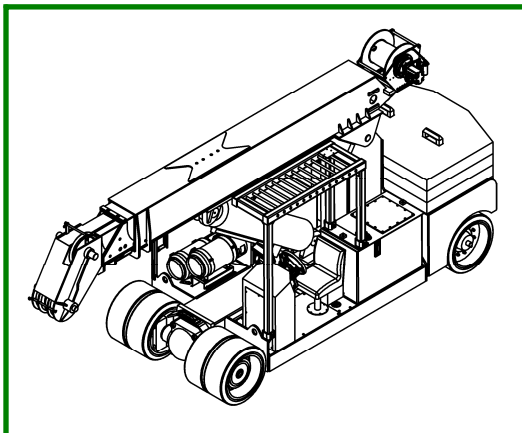
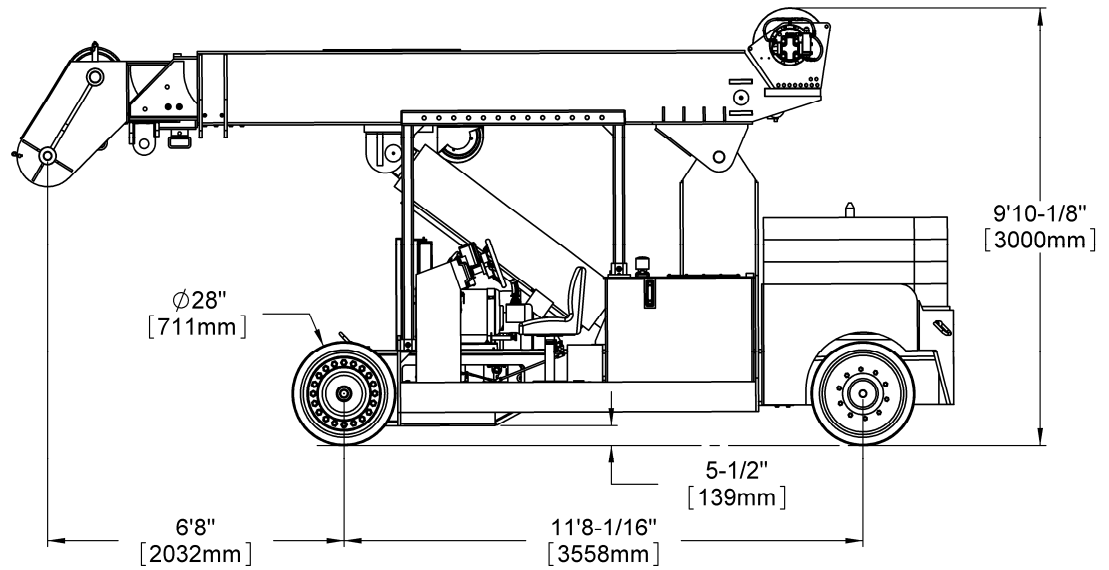
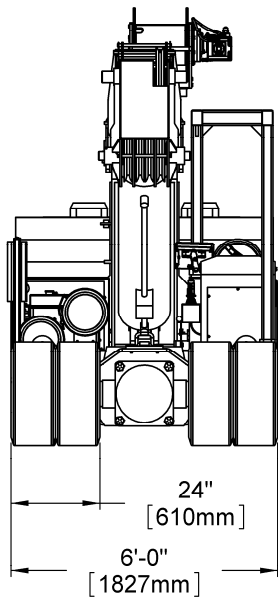
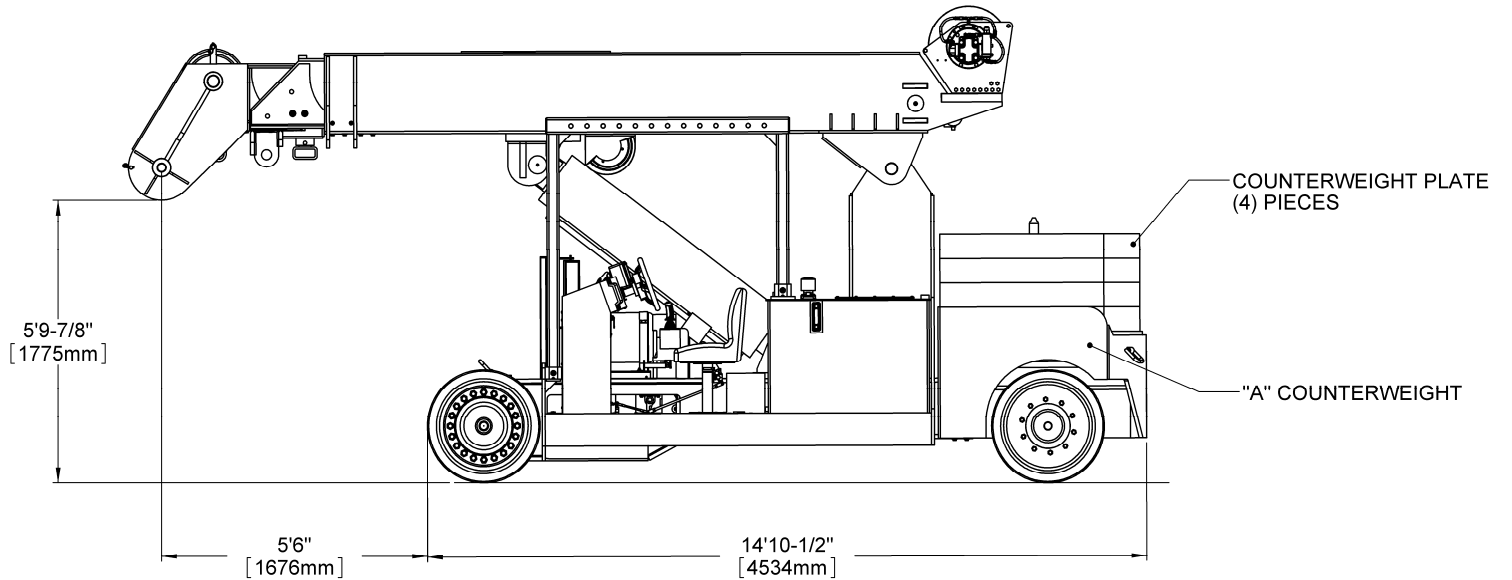
Consult factory for available capacities



MOBILIFT

33 TON

DIMENSIONAL DATA

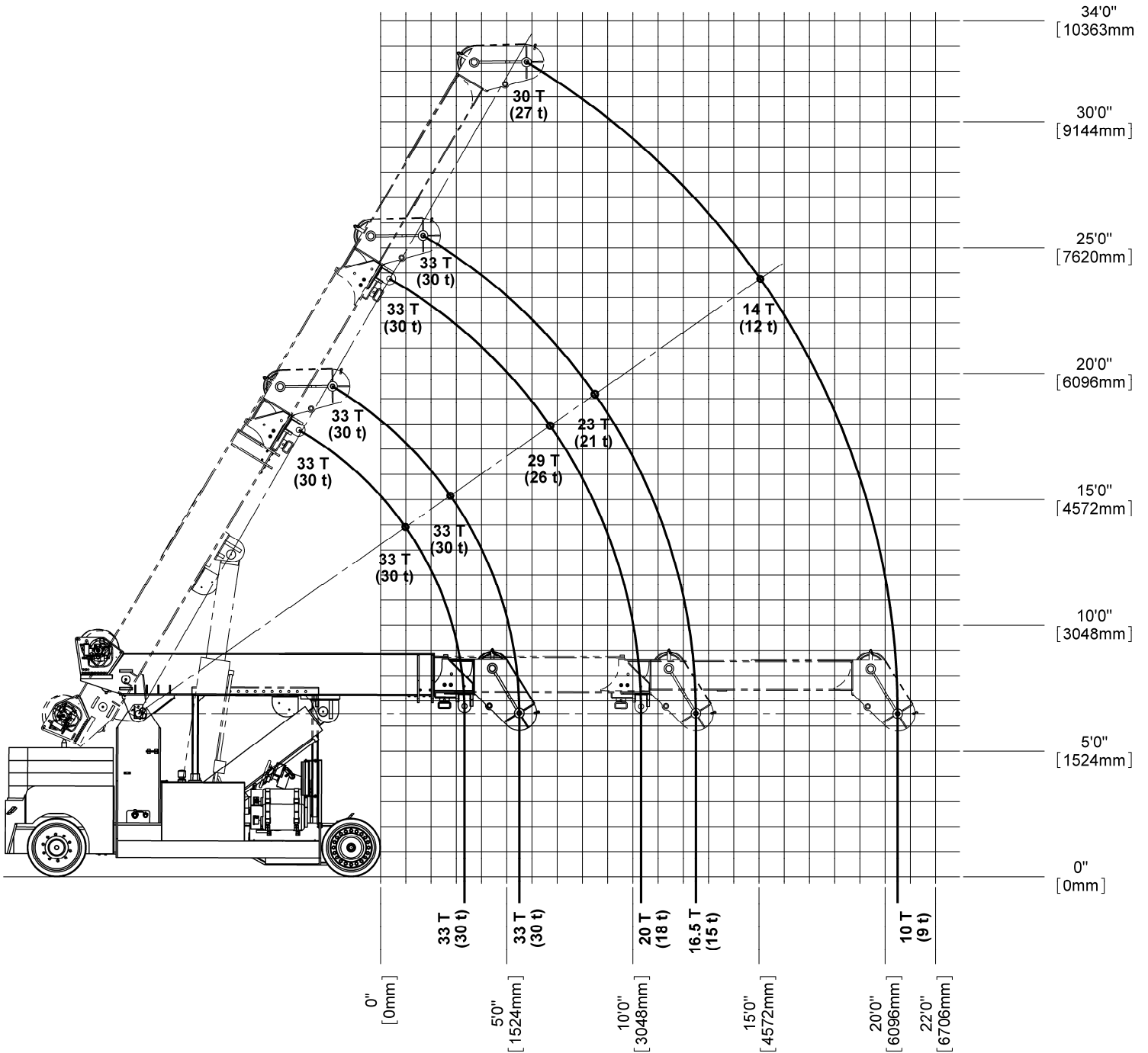




MOBILIFT

33 TON

REFERENCE CAPACITY / RANGE DIAGRAM



NOTE

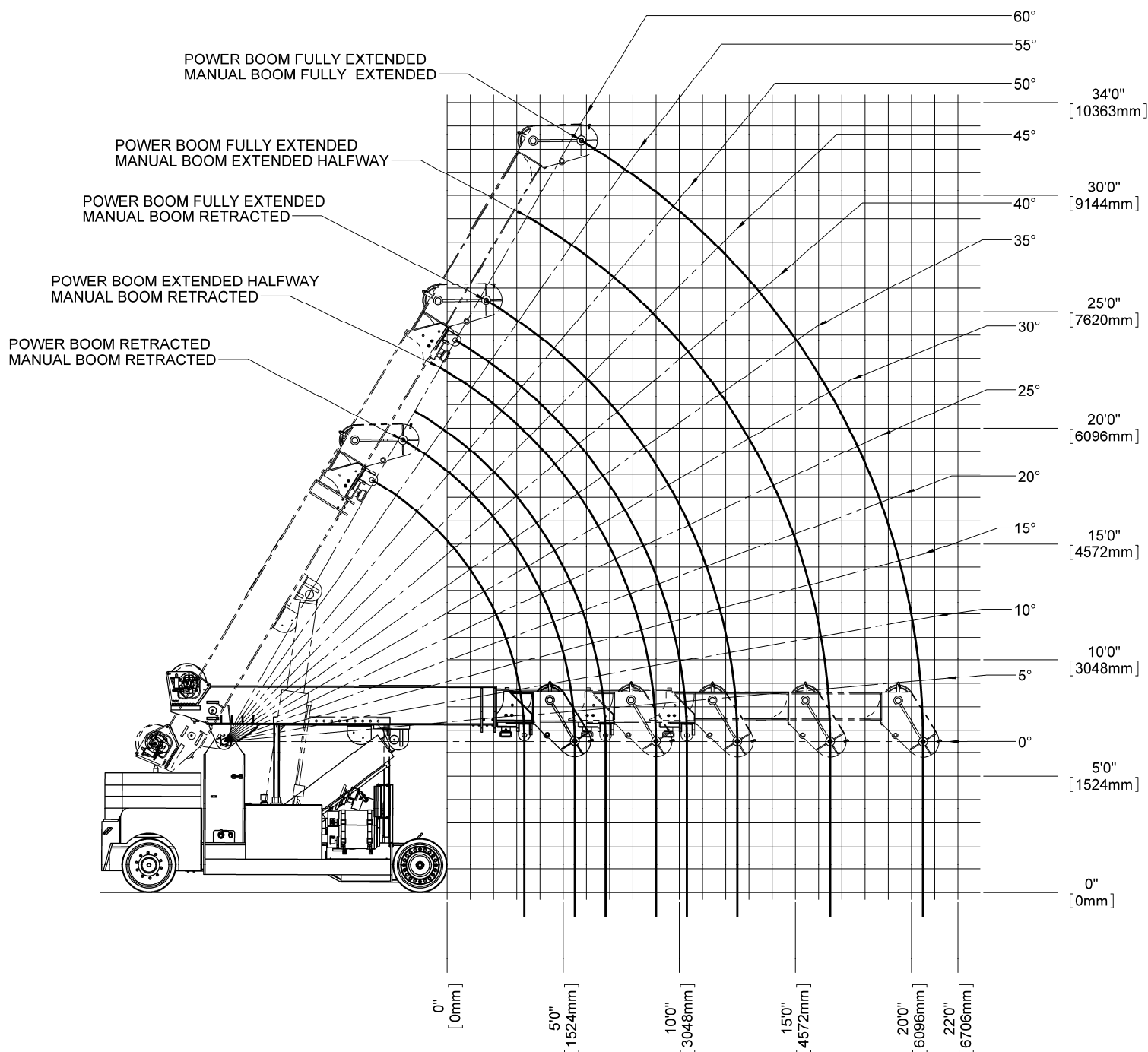
1. The above chart is for reference purposes only.
2. Never use the above chart for lift planning calculations
3. Lift plan calculations are to be determined solely by the load charts and range diagrams that are issued for the specific serial numbered machine that is to be used for the specific planned lift.



MOBILIFT

33 TON

RANGE DIAGRAM



NOTE

1. The above chart is for reference purposes only.
2. Never use the above chart for lift planning calculations
3. Lift plan calculations are to be determined solely by the load charts and range diagrams that are issued for the specific serial numbered machine that is to be used for the specific planned lift.



MOBILIFT

33 TON

LOAD CHARTS FOR BASE UNIT WITH NO COUNTERWEIGHT

| LOAD RADIUS (FEET FROM FRONT) | 33 TON MOBILIFT LOAD CHART | | | | | | | | | | MLLC229 |
|----------------------------------|--|--------|----|--------|----|---------------------------------------|--------|----|--------|----|-----------|
| | FOR USE WITH HOOK BLOCK ONLY STANDARD NON-REMOVABLE "A" COUNTERWEIGHT | | | | | | | | | | 2/17/2009 |
| | FULLY EXTENDED BOOM LENGTH (FEET) | | | | | FULLY RETRACTED BOOM LENGTH (FEET) | | | | | |
| | 15 | 22 | 30 | | | 15 | 22 | 30 | | | |
| 0 | 50 | 66,139 | | | | 50 | 66,139 | | | | |
| 1 | 45 | 66,139 | | | | 45 | 66,139 | | | | |
| 2 | 39 | 66,139 | 58 | 66,139 | | 39 | 56,000 | 58 | 54,800 | | |
| 3 | 33 | 51,000 | 55 | 50,000 | | 33 | 41,900 | 55 | 40,900 | | |
| 4 | 25 | 40,600 | 52 | 39,700 | | 25 | 33,300 | 52 | 32,400 | | |
| 5 | 14 | 33,600 | 48 | 32,700 | | 14 | 27,400 | 48 | 26,600 | | |
| 5.5 | 0 | 31,000 | | | | 0 | 25,300 | | | | |
| 6 | | | 45 | 27,700 | 59 | 28,800 | | 45 | 22,500 | 59 | 23,500 |
| 7 | SEE NOTE (E) | | 41 | 24,000 | 56 | 24,900 | | 41 | 19,300 | 56 | 20,300 |
| 8 | | | 37 | 21,000 | 54 | 21,900 | | 37 | 16,900 | 54 | 17,800 |
| 9 | | | 32 | 18,600 | 52 | 19,500 | | 32 | 14,900 | 52 | 15,800 |
| 10 | | | 27 | 16,700 | 49 | 17,500 | | 27 | 13,300 | 49 | 14,100 |
| 11 | | | 21 | 15,100 | 47 | 15,800 | | 21 | 12,000 | 47 | 12,700 |
| 12 | | | 18 | 13,700 | 44 | 14,400 | | 12 | 10,800 | 44 | 11,600 |
| 12.5 | | | 0 | 13,100 | | | | 0 | 10,300 | | |
| 13 | | | | | 41 | 13,200 | | | | 41 | 10,600 |
| 14 | | | | | 38 | 12,200 | | | | 38 | 9,700 |
| 15 | | | | | 35 | 11,300 | | | | 35 | 8,900 |
| 16 | | | | | 32 | 10,500 | | | | 32 | 8,300 |
| 17 | | | | | 28 | 9,700 | | | | 28 | 7,700 |
| 18 | | | | | 23 | 9,100 | | | | 23 | 7,100 |
| 19 | | | | | 18 | 8,500 | | | | 18 | 6,600 |
| 20 | | | | | 10 | 8,000 | | | | 10 | 6,200 |
| 20.5 | | | | | 0 | 7,800 | | | | 0 | 6,000 |

NOTES:
 A) FLY SECTION CAPACITIES ARE LIMITED BY ANGLE. DO NOT USE LOAD RADIUS WHEN USING FLY SECTION.
 B) RATINGS ABOVE THE BOLD LINE ARE BASED ON THE MACHINE'S HYDRAULIC OR STRUCTURAL STRENGTH AND NOT STABILITY.
 C) RATINGS BELOW THE BOLD LINE ARE BASED ON 85% OF TIPPING.
 D) ALL CAPACITIES ARE IN POUNDS.
 E) TELESCOPE CYLINDER MUST BE FULLY RETRACTED AND AGAINST STOPS.

WARNING:
 FOR BOOM LENGTHS LESS THAN 30' WITH FLY SECTION EXTENDED, THE RATED LOADS ARE DETERMINED BY BOOM ANGLE ONLY. IN THE COLUMN HEADED BY 30' BOOM, FOR BOOM ANGLES NOT SHOWN USE RATINGS OF THE NEXT LOWER BOOM ANGLE.

CAUTION!
 DO NOT EXTEND OR RETRACT COUNTERWEIGHT WITH ANY LOAD SUSPENDED ON HOOK OR FORKS.

LOAD CHARTS FOR BASE UNIT WITH 1 COUNTERWEIGHT SLAB

| LOAD RADIUS (FEET FROM FRONT) | 33 TON MOBILIFT LOAD CHART | | | | | | | | | | MLLC230 |
|----------------------------------|---|--------|----|--------|----|---------------------------------------|--------|----|--------|----|-----------|
| | FOR USE WITH HOOK BLOCK ONLY STANDARD NON-REMOVABLE "A" COUNTERWEIGHT PLUS (1) COUNTERWEIGHT PLATE | | | | | | | | | | 2/17/2009 |
| | FULLY EXTENDED BOOM LENGTH (FEET) | | | | | FULLY RETRACTED BOOM LENGTH (FEET) | | | | | |
| | 15 | 22 | 30 | | | 15 | 22 | 30 | | | |
| 0 | 50 | 66,139 | | | | 50 | 66,139 | | | | |
| 1 | 45 | 66,139 | | | | 45 | 66,139 | | | | |
| 2 | 39 | 66,139 | 58 | 66,139 | | 39 | 66,139 | 58 | 66,139 | | |
| 3 | 33 | 66,139 | 55 | 66,139 | | 33 | 54,500 | 55 | 53,400 | | |
| 4 | 25 | 54,300 | 52 | 53,400 | | 25 | 43,400 | 52 | 42,500 | | |
| 5 | 14 | 45,000 | 48 | 44,200 | | 14 | 35,900 | 48 | 35,100 | | |
| 5.5 | 0 | 41,700 | | | | 0 | 33,200 | | | | |
| 6 | | | 45 | 37,600 | 59 | 38,600 | | 45 | 29,800 | 59 | 30,800 |
| 7 | SEE NOTE (E) | | 41 | 32,600 | 56 | 33,600 | | 41 | 25,700 | 56 | 26,700 |
| 8 | | | 37 | 28,700 | 54 | 29,600 | | 37 | 22,600 | 54 | 23,500 |
| 9 | | | 32 | 25,600 | 52 | 26,400 | | 32 | 20,100 | 52 | 20,900 |
| 10 | | | 27 | 23,000 | 49 | 23,800 | | 27 | 18,000 | 49 | 18,800 |
| 11 | | | 21 | 20,900 | 47 | 21,700 | | 21 | 16,300 | 47 | 17,000 |
| 12 | | | 16 | 19,100 | 44 | 19,800 | | 12 | 14,800 | 44 | 15,500 |
| 12.5 | | | 0 | 18,300 | | | | 0 | 14,200 | | |
| 13 | | | | | 41 | 18,200 | | | | 41 | 14,300 |
| 14 | | | | | 38 | 16,800 | | | | 38 | 13,100 |
| 15 | | | | | 35 | 15,600 | | | | 35 | 12,200 |
| 16 | | | | | 32 | 14,600 | | | | 32 | 11,300 |
| 17 | | | | | 28 | 13,600 | | | | 28 | 10,500 |
| 18 | | | | | 23 | 12,800 | | | | 23 | 9,800 |
| 19 | | | | | 18 | 12,000 | | | | 18 | 9,200 |
| 20 | | | | | 10 | 11,300 | | | | 10 | 8,700 |
| 20.5 | | | | | 0 | 11,000 | | | | 0 | 8,400 |

NOTES:
 A) FLY SECTION CAPACITIES ARE LIMITED BY ANGLE. DO NOT USE LOAD RADIUS WHEN USING FLY SECTION.
 B) RATINGS ABOVE THE BOLD LINE ARE BASED ON THE MACHINE'S HYDRAULIC OR STRUCTURAL STRENGTH AND NOT STABILITY.
 C) RATINGS BELOW THE BOLD LINE ARE BASED ON 85% OF TIPPING.
 D) ALL CAPACITIES ARE IN POUNDS.
 E) TELESCOPE CYLINDER MUST BE FULLY RETRACTED AND AGAINST STOPS.

WARNING:
 FOR BOOM LENGTHS LESS THAN 30' WITH FLY SECTION EXTENDED, THE RATED LOADS ARE DETERMINED BY BOOM ANGLE ONLY. IN THE COLUMN HEADED BY 30' BOOM, FOR BOOM ANGLES NOT SHOWN USE RATINGS OF THE NEXT LOWER BOOM ANGLE.

CAUTION!
 DO NOT EXTEND OR RETRACT COUNTERWEIGHT WITH ANY LOAD SUSPENDED ON HOOK OR FORKS.

NOTE:

Specifications are provided in metric dimensions. All equipment dimensions, designs, specifications, calculations, etc., as described, are subject to change at manufacturer's discretion at any time and without notice. Weights are approximate and may vary. Data herein is for informational purposes only and will not be construed to guarantee suitability of equipment for any particular as performance may vary with conditions encountered. Warranty will apply as written in standard contract form upon purchase of equipment. Capacities are for reference only and must not be used for any serial numbered machine. Serial numbered load charts may be obtained from Lift Systems, Inc.



MOBILIFT

33 TON

LOAD CHARTS FOR BASE UNIT WITH 2 COUNTERWEIGHT SLABS

| LOAD RADIUS (FEET FROM FRONT) | 33 TON MOBILIFT LOAD CHART | | | | | | | | | | | | MLLC231 |
|----------------------------------|--|--------|----|--|----|--------|---------------------------------------|--|----|--------|----|--|-----------|
| | FOR USE WITH HOOK BLOCK ONLY STANDARD NON-REMOVABLE "A" COUNTERWEIGHT PLUS (2) COUNTERWEIGHT PLATES | | | | | | | | | | | | 2/17/2009 |
| | FULLY EXTENDED BOOM LENGTH (FEET) | | | | | | FULLY RETRACTED BOOM LENGTH (FEET) | | | | | | |
| | 15 | 22 | 30 | | 15 | 22 | 30 | | 15 | 22 | 30 | | |
| 0 | 50 | 66,139 | | | 50 | 66,139 | | | 50 | 66,139 | | | |
| 1 | 45 | 66,139 | | | 45 | 66,139 | | | 45 | 66,139 | | | |
| 2 | 39 | 66,139 | | | 39 | 66,139 | | | 39 | 66,139 | | | |
| 3 | 33 | 66,139 | | | 33 | 66,139 | | | 33 | 66,139 | | | |
| 4 | 25 | 66,139 | | | 25 | 53,500 | | | 25 | 53,500 | | | |
| 5 | 14 | 56,500 | | | 14 | 44,400 | | | 14 | 44,400 | | | |
| 5.5 | 0 | 52,300 | | | 0 | 41,100 | | | 0 | 41,100 | | | |
| 6 | | | | | | | | | | | | | |
| 7 | | | | | | | | | | | | | |
| 8 | | | | | | | | | | | | | |
| 9 | | | | | | | | | | | | | |
| 10 | | | | | | | | | | | | | |
| 11 | | | | | | | | | | | | | |
| 12 | | | | | | | | | | | | | |
| 12.5 | | | | | | | | | | | | | |
| 13 | | | | | | | | | | | | | |
| 14 | | | | | | | | | | | | | |
| 15 | | | | | | | | | | | | | |
| 16 | | | | | | | | | | | | | |
| 17 | | | | | | | | | | | | | |
| 18 | | | | | | | | | | | | | |
| 19 | | | | | | | | | | | | | |
| 20 | | | | | | | | | | | | | |
| 20.5 | | | | | | | | | | | | | |

LOAD CHARTS FOR BASE UNIT WITH 3 COUNTERWEIGHT SLABS

| LOAD RADIUS (FEET FROM FRONT) | 33 TON MOBILIFT LOAD CHART | | | | | | | | | | | | MLLC232 |
|----------------------------------|--|--------|----|--|----|--------|---------------------------------------|--|----|--------|----|--|-----------|
| | FOR USE WITH HOOK BLOCK ONLY STANDARD NON-REMOVABLE "A" COUNTERWEIGHT PLUS (3) COUNTERWEIGHT PLATES | | | | | | | | | | | | 2/17/2009 |
| | FULLY EXTENDED BOOM LENGTH (FEET) | | | | | | FULLY RETRACTED BOOM LENGTH (FEET) | | | | | | |
| | 15 | 22 | 30 | | 15 | 22 | 30 | | 15 | 22 | 30 | | |
| 0 | 50 | 66,139 | | | 50 | 66,139 | | | 50 | 66,139 | | | |
| 1 | 45 | 66,139 | | | 45 | 66,139 | | | 45 | 66,139 | | | |
| 2 | 39 | 66,139 | | | 39 | 66,139 | | | 39 | 66,139 | | | |
| 3 | 33 | 66,139 | | | 33 | 66,139 | | | 33 | 66,139 | | | |
| 4 | 25 | 66,139 | | | 25 | 64,000 | | | 25 | 64,000 | | | |
| 5 | 14 | 66,139 | | | 14 | 52,900 | | | 14 | 52,900 | | | |
| 5.5 | 0 | 63,300 | | | 0 | 49,000 | | | 0 | 49,000 | | | |
| 6 | | | | | | | | | | | | | |
| 7 | | | | | | | | | | | | | |
| 8 | | | | | | | | | | | | | |
| 9 | | | | | | | | | | | | | |
| 10 | | | | | | | | | | | | | |
| 11 | | | | | | | | | | | | | |
| 12 | | | | | | | | | | | | | |
| 12.5 | | | | | | | | | | | | | |
| 13 | | | | | | | | | | | | | |
| 14 | | | | | | | | | | | | | |
| 15 | | | | | | | | | | | | | |
| 16 | | | | | | | | | | | | | |
| 17 | | | | | | | | | | | | | |
| 18 | | | | | | | | | | | | | |
| 19 | | | | | | | | | | | | | |
| 20 | | | | | | | | | | | | | |
| 20.5 | | | | | | | | | | | | | |

NOTE:
Specifications are provided in metric dimensions. All equipment dimensions, designs, specifications, calculations, etc., as described, are subject to change at manufacturer's discretion at any time and without notice. Weights are approximate and may vary. Data herein is for informational purposes only and will not be construed to guarantee suitability of equipment for any particular as performance may vary with conditions encountered. Warranty will apply as written in standard contract form upon purchase of equipment. Capacities are for reference only and must not be used for any serial numbered machine. Serial numbered load charts may be obtained from Lift Systems, Inc.



MOBILIFT

33 TON

LOAD CHARTS FOR BASE UNIT WITH FULL COUNTERWEIGHT (4 SLABS)

| LOAD RADIUS (FEET FROM FRONT) | 33 TON MOBILIFT LOAD CHART | | | | | | | | | | MLLC233 |
|----------------------------------|---|--------|--------|--------|--------|---------------------------------------|--------|--------|--------|--------|-----------|
| | FOR USE WITH HOOK BLOCK ONLY STANDARD NON-REMOVABLE "A" COUNTERWEIGHT PLUS (4) COUNTERWEIGHT PLATES | | | | | | | | | | 2/17/2009 |
| | FULLY EXTENDED BOOM LENGTH (FEET) | | | | | FULLY RETRACTED BOOM LENGTH (FEET) | | | | | |
| | 15 | 22 | 30 | | | 15 | 22 | 30 | | | |
| 0 | 50 | 66,139 | | | | 50 | 66,139 | | | | |
| 1 | 45 | 66,139 | | | | 45 | 66,139 | | | | |
| 2 | 39 | 66,139 | 58 | 66,139 | | 39 | 66,139 | 58 | 66,139 | | |
| 3 | 33 | 66,139 | 55 | 66,139 | | 33 | 66,139 | 55 | 66,139 | | |
| 4 | 25 | 66,139 | 52 | 66,139 | | 25 | 66,139 | 52 | 66,139 | | |
| 5 | 14 | 66,139 | 48 | 66,139 | | 14 | 61,700 | 48 | 61,100 | | |
| 5.5 | 0 | 66,139 | | | | 0 | 57,200 | | | | |
| 6 | | 45 | 66,139 | 59 | 61,000 | | 45 | 51,700 | 59 | 52,700 | |
| 7 | SEE NOTE (E) | 41 | 58,600 | 56 | 58,600 | SEE NOTE (E) | 41 | 45,000 | 56 | 45,900 | |
| 8 | | 37 | 51,900 | 54 | 52,700 | | 37 | 39,700 | 54 | 40,600 | |
| 9 | | 32 | 46,500 | 52 | 47,300 | | 32 | 35,500 | 52 | 36,300 | |
| 10 | | 27 | 42,000 | 49 | 42,800 | | 27 | 32,000 | 49 | 32,900 | |
| 11 | | 21 | 38,300 | 47 | 39,100 | | 21 | 29,200 | 47 | 29,900 | |
| 12 | | 18 | 35,200 | 44 | 35,900 | | 12 | 26,700 | 44 | 27,500 | |
| 12.5 | | 0 | 33,900 | | | | 0 | 25,700 | | | |
| 13 | | | | 41 | 33,200 | | | | 41 | 25,300 | |
| 14 | | | | 38 | 30,800 | | | | 38 | 23,500 | |
| 15 | | | | 35 | 28,800 | | | | 35 | 21,900 | |
| 16 | | | | 32 | 26,900 | | | | 32 | 20,400 | |
| 17 | | | | 28 | 25,300 | | | | 28 | 19,200 | |
| 18 | | | | 23 | 23,800 | | | | 23 | 18,000 | |
| 19 | | | | 18 | 22,500 | | | | 18 | 17,000 | |
| 20 | | | | 10 | 21,300 | | | | 10 | 16,100 | |
| 20.5 | | | | 0 | 20,800 | | | | 0 | 15,700 | |

NOTES:
 A) FLY SECTION CAPACITIES ARE LIMITED BY ANGLE. DO NOT USE LOAD RADIUS WHEN USING FLY SECTION.
 B) RATINGS ABOVE THE BOLD LINE ARE BASED ON THE MACHINE'S HYDRAULIC OR STRUCTURAL STRENGTH AND NOT STABILITY.
 C) RATINGS BELOW THE BOLD LINE ARE BASED ON 85% OF TIPPING.
 D) ALL CAPACITIES ARE IN POUNDS.
 E) TELESCOPE CYLINDER MUST BE FULLY RETRACTED AND AGAINST STOPS.

WARNING
 FOR BOOM LENGTHS LESS THAN 30' WITH FLY SECTION EXTENDED, THE RATED LOADS ARE DETERMINED BY BOOM ANGLE ONLY. IN THE COLUMN HEADED BY 30' BOOM. FOR BOOM ANGLES NOT SHOWN USE RATINGS OF THE NEXT LOWER BOOM ANGLE.

CAUTION!
 DO NOT EXTEND OR RETRACT COUNTERWEIGHT WITH ANY LOAD SUSPENDED ON HOOK OR FORKS.

LOAD CHARTS FOR POWER BOOM PICKING EYE + FULL COUNTERWEIGHT (4 SLABS)

| LOAD RADIUS (FEET FROM FRONT) | 33 TON MOBILIFT LOAD CHART | | | | | | | | MLLC238 |
|----------------------------------|--|------------------------|----|--------|-------------------------|------------------------|----|--------|-----------|
| | FOR USE WITH POWER BOOM LIFT EYE ONLY STANDARD NON-REMOVABLE "A" COUNTERWEIGHT PLUS (4) COUNTERWEIGHT PLATES | | | | | | | | 2/17/2009 |
| | FULLY EXTENDED | | | | FULLY RETRACTED | | | | |
| | POWER BOOM RETRACTED | POWER BOOM EXTENDED | | | POWER BOOM RETRACTED | POWER BOOM EXTENDED | | | |
| 0 | 41 | 66,139 | | | 41 | 66,139 | | | |
| 1 | 33 | 66,139 | 57 | 66,139 | 33 | 66,139 | 57 | 66,139 | |
| 2 | 25 | 66,139 | 54 | 66,139 | 25 | 66,139 | 54 | 66,139 | |
| 3 | 11 | 66,139 | 50 | 66,139 | 11 | 66,139 | 50 | 66,139 | |
| 3.3 | 0 | 66,139 | | | 0 | 66,139 | | | |
| 4 | | SEE NOTE (D) | 46 | 66,139 | | SEE NOTE (D) | 46 | 66,139 | |
| 5 | | | 42 | 66,139 | | | 42 | 59,720 | |
| 6 | | | 38 | 65,700 | | | 38 | 50,900 | |
| 7 | | | 33 | 57,900 | | | 33 | 44,200 | |
| 8 | | | 27 | 51,200 | | | 27 | 39,000 | |
| 9 | | | 20 | 45,800 | | | 20 | 34,900 | |
| 10 | | | 10 | 41,400 | | | 10 | 31,500 | |
| 10.3 | | | 0 | 40,200 | | | 0 | 30,500 | |

NOTES:
 A) RATINGS ABOVE THE BOLD LINE ARE BASED ON THE MACHINE'S HYDRAULIC OR STRUCTURAL STRENGTH AND NOT STABILITY.
 B) RATINGS BELOW THE BOLD LINE ARE BASED ON 85% OF TIPPING.
 C) ALL CAPACITIES ARE IN POUNDS.
 D) TELESCOPE CYLINDER MUST BE FULLY RETRACTED AND AGAINST STOPS.

CAUTION!
 DO NOT EXTEND OR RETRACT COUNTERWEIGHT WITH ANY LOAD SUSPENDED ON HOOK OR FORKS.

LIFT SYSTEMS, INC.

OFFICE:
 1505 - 7th Street
 East Moline, IL 61244

MAILING ADDRESS:
 P.O. Box 906
 Moline, IL 61266

TEL: +1-309-764-9842
 FAX: +1-309-764-9848
 EMAIL: liftit@lift-systems.com
 WEB: www.lift-systems.com