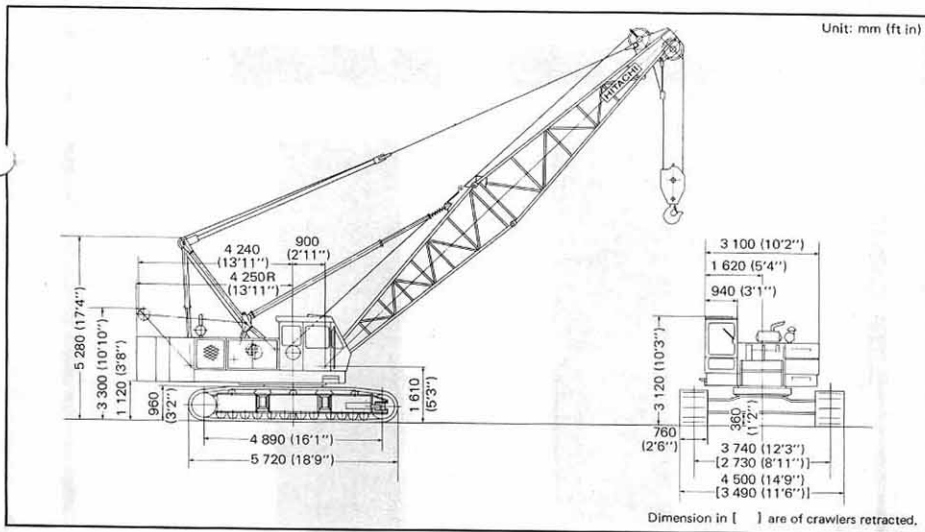


KH230-3

HYDRAULIC CRAWLER CRANE

Max. Lifting Capacity : 60 000 kg (132 200 lb) at 3.7 m (12'2")

Dimensions



Specifications

Maximum rated load		60 000 kg (132 200 lb) at 3.7 m (12'2") working radius
Boom	Basic boom length	13.0 m (42'8")
	Max. boom length	52.0 m (170'7")
	Jib length	9.0 m (29'6") to 18.0 m (59'1")
	Max. boom with jib length	64.0 m (210'0") [46.0 m (150'11") + 18.0 m (59'1")]
Swing speed		0 to 3.5 min ⁻¹ (0 to 3.5 rpm)
Travel speed*		0 to 1.5 km/h (0 to 0.93 mph)
Gradeability		17° (30%)
Ground pressure		0.75 bar (0.75 kgf/cm ² , 10.7 psi)
Operating weight	Equipped with basic boom, 60 000 kg (132 200 lb) capacity hook and 22 800 kg (50 300 lb) counterweight	59 300 kg (130 700 lb)
Engine	Model	HINO EM100
	Rated horsepower	110 kW (150 PS) at 2 000 min ⁻¹ (2 000 rpm)

*Speeds may vary with load

Boom length	Working radius		Boom angle	Rated load					
				BS rating		PCSA rating		JIS rating	
m (ft in)	m	ft in	degree	kg	lb	kg	lb	kg	
31.0 (101'9")	6.6	21' 8"	79.98	29 700	65 400	28 550	62 900	29 700	
	7.0	23' 0"	79.22	27 100	59 700	26 100	57 500	27 100	
	8.0	26' 3"	77.33	22 250	49 000	21 400	47 100	22 250	
	9.0	29' 6"	75.43	18 800	41 400	18 050	39 700	18 800	
	10.0	32' 10"	73.50	16 200	35 700	15 550	34 200	16 200	
	12.0	39' 4"	69.59	12 550	27 600	12 050	26 500	12 550	
	14.0	45' 11"	65.58	10 100	22 200	9 700	21 300	10 100	
	16.0	52' 6"	61.42	8 350	18 400	8 050	17 700	8 350	
	18.0	59' 1"	57.10	7 050	15 500	6 800	14 900	7 050	
	20.0	65' 7"	52.54	6 050	13 300	5 850	12 800	6 050	
	22.0	72' 2"	47.68	5 250	11 500	5 050	11 100	5 250	
	24.0	78' 9"	42.40	4 550	10 000	4 450	9 810	4 550	
	26.0	85' 4"	36.51	4 000	8 810	3 950	8 700	4 100	
	27.9	91' 6"	30.01	3 600	7 930	3 500	7 710	3 650	
	34.0 (111'7")	7.1	23' 4"	80.02	26 450	58 300	25 400	55 900	26 450
		8.0	26' 3"	78.47	22 200	48 900	21 350	47 000	22 200
9.0		29' 6"	76.74	18 700	41 200	18 000	39 600	18 700	
10.0		32' 10"	75.00	16 100	35 400	15 500	34 100	16 100	
12.0		39' 4"	71.47	12 450	27 400	11 950	26 300	12 450	
14.0		45' 11"	67.86	10 000	22 000	9 650	21 200	10 000	
16.0		52' 6"	64.16	8 250	18 100	7 950	17 500	8 250	
18.0		59' 1"	60.33	6 950	15 300	6 700	14 700	6 950	
20.0		65' 7"	56.35	5 950	13 100	5 750	12 600	5 950	
22.0		72' 2"	52.17	5 100	11 200	4 950	10 900	5 150	
24.0		78' 9"	47.73	4 450	9 810	4 350	9 590	4 500	
26.0		85' 4"	42.94	3 850	8 480	3 800	8 370	3 950	
28.0		91' 10"	37.68	3 400	7 490	3 350	7 380	3 500	
30.0		98' 5"	31.67	3 000	6 610	3 000	6 810	3 100	
30.5		100' 1"	30.00	2 900	6 390	2 900	6 390	3 050	
37.0 (121'5")		7.7	25' 3"	79.89	23 400	51 500	22 500	49 600	23 400
	8.0	26' 3"	79.42	22 100	48 700	21 250	46 800	22 100	
	9.0	29' 6"	77.83	18 600	41 000	17 900	39 400	18 600	
	10.0	32' 10"	76.24	16 000	35 200	15 400	33 900	16 000	
	12.0	39' 4"	73.02	12 350	27 200	11 850	26 100	12 350	
	14.0	45' 11"	69.75	9 900	21 800	9 550	21 000	9 900	
	16.0	52' 6"	66.39	8 150	17 900	7 850	17 300	8 150	
	18.0	59' 1"	62.95	6 850	15 100	6 600	14 500	6 850	
	20.0	65' 7"	59.40	5 800	12 700	5 650	12 400	5 850	
	22.0	72' 2"	55.71	5 000	11 000	4 850	10 600	5 050	
	24.0	78' 9"	51.85	4 300	9 470	4 200	9 250	4 400	
	26.0	85' 4"	47.76	3 750	8 260	3 700	8 150	3 850	
	28.0	91' 10"	43.39	3 300	7 270	3 250	7 160	3 400	
	30.0	98' 5"	38.62	2 900	6 390	2 900	6 390	3 000	
	32.0	105' 0"	33.29	2 550	5 620	2 550	5 620	2 600	
	33.1	108' 7"	29.99	2 350	5 180	2 400	5 290	2 450	

Boom length	Working radius		Boom angle	Rated load				
				BS rating		PCSA rating		JIS rating
m (ft in)	m	ft in	degree	kg	lb	kg	lb	kg
40.0 (131'3")	8.2	26' 11"	79.93	21 250	46 800	20 450	45 000	21 250
	9.0	29' 6"	78.76	18 550	40 800	17 800	39 200	18 550
	10.0	32' 10"	77.29	15 900	35 000	15 300	33 700	15 900
	12.0	39' 4"	74.33	12 250	27 000	11 800	26 000	12 250
	14.0	45' 11"	71.33	9 800	21 600	9 450	20 800	9 800
	16.0	52' 6"	68.27	8 050	17 700	7 750	17 000	8 050
	18.0	59' 1"	65.14	6 750	14 800	6 500	14 300	6 750
	20.0	65' 7"	61.92	5 700	12 500	5 550	12 200	5 750
	22.0	72' 2"	58.61	4 800	10 600	4 750	10 400	4 900
	24.0	78' 9"	55.17	4 200	9 250	4 100	9 030	4 300
	26.0	85' 4"	51.58	3 650	8 040	3 600	7 930	3 750
	28.0	91' 10"	47.80	3 150	6 940	3 150	6 940	3 300
	30.0	98' 5"	43.77	2 750	6 060	2 800	6 170	2 850
	32.0	105' 0"	39.41	2 400	5 290	2 450	5 400	2 450
	34.0	111' 7"	34.80	2 100	4 620	2 150	4 730	2 150
	43.0 (141'1")	8.7	28' 7"	79.96	17 900	39 400	18 650	41 100
9.0		29' 6"	79.56	17 500	38 500	17 750	39 100	18 450
10.0		32' 10"	78.20	15 850	34 900	15 250	33 600	15 850
12.0		39' 4"	75.45	12 200	26 800	11 700	25 700	12 200
14.0		45' 11"	72.68	9 750	21 400	9 350	20 600	9 750
16.0		52' 6"	69.85	8 000	17 600	7 700	16 900	8 000
18.0		59' 1"	66.98	6 650	14 600	6 450	14 200	6 700
20.0		65' 7"	64.04	5 600	12 300	5 450	12 000	5 650
22.0		72' 2"	61.03	4 750	10 400	4 650	10 200	4 850
24.0		78' 9"	57.92	4 100	9 030	4 050	8 920	4 200
26.0		85' 4"	54.70	3 500	7 710	3 500	7 710	3 650
28.0		91' 10"	51.35	3 050	6 720	3 050	6 720	3 150
30.0		98' 5"	47.82	2 650	5 840	2 700	5 950	2 700
32.0		105' 0"	44.09	2 300	5 070	2 300	5 070	2 300
34.0		111' 7"	40.08	2 000	4 400	2 000	4 400	2 000
46.0 (150'11")		9.2	30' 2"	79.99	15 300	33 700	17 150	37 800
	10.0	32' 10"	78.98	14 500	31 900	15 150	33 400	15 750
	12.0	39' 4"	76.42	12 100	26 600	11 600	25 500	12 100
	14.0	45' 11"	73.84	9 650	21 200	9 250	20 300	9 650
	16.0	52' 6"	71.22	7 850	17 300	7 600	16 700	7 900
	18.0	59' 1"	68.56	6 550	14 400	6 350	13 900	6 600
	20.0	65' 7"	65.85	5 500	12 100	5 350	11 700	5 550
	22.0	72' 2"	63.08	4 650	10 200	4 450	10 000	4 750
	24.0	78' 9"	60.24	3 950	8 700	3 950	8 700	4 100
	26.0	85' 4"	57.32	3 400	7 490	3 400	7 490	3 550
	28.0	91' 10"	54.29	2 950	6 500	2 950	6 500	3 000
	30.0	98' 5"	51.14	2 500	5 510	2 550	5 620	2 550
	32.0	105' 0"	47.85	2 150	4 730	2 200	4 850	2 200
	34.0	111' 7"	44.37	1 850	4 070	1 850	4 070	1 850

Crane Ratings

BS Rating:

The rated loads are determined according to BS (British Standard; 1981) on the condition that the machine is stationed on firm, level ground.

PCSA Rating:

The rated loads listed are determined according to PCSA (Power Crane and Shovel Association in U.S.A.) and do not exceed 75% of tipping load on condition that the machine is stationed on firm, level ground.

JIS Rating:

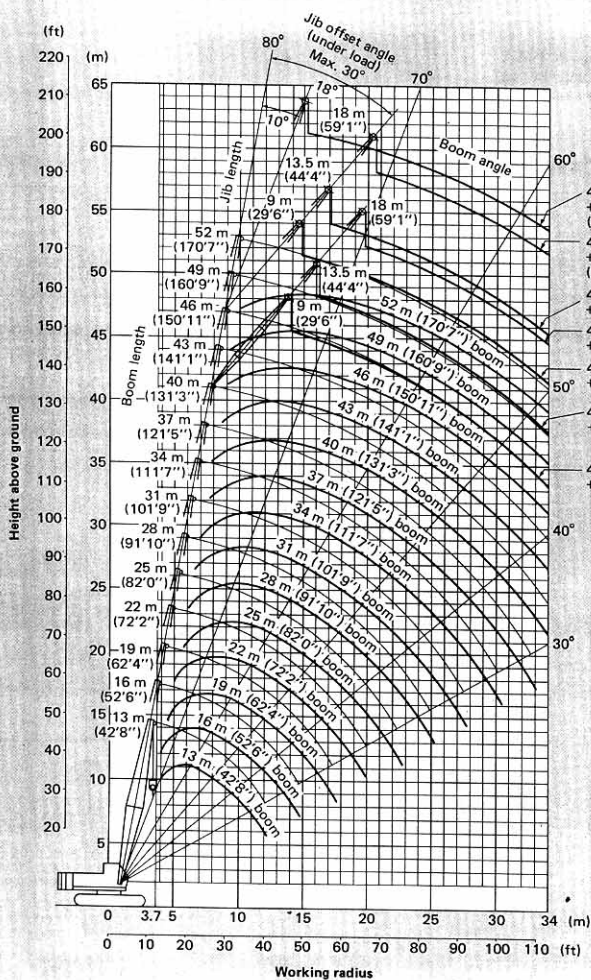
The rated loads shown don't exceed 78% of tipping loads with the machine on firm level ground.

Tubular Chord Crane Boom in 360° Working Area

Boom length	Working radius		Boom angle	Rated load					
				BS rating		PCSA rating		JIS rating	
	m	ft in		kg	lb	kg	lb	kg	lb
13.0 (42'8")	3.7	12' 2"	78.93	60 000	132 200	60 000	132 200	60 000	
	4.0	13' 1"	77.57	55 450	122 200	55 450	122 200	55 450	
	4.5	14' 9"	75.29	49 150	108 300	49 150	108 300	49 150	
	5.0	16' 5"	72.99	44 100	97 200	44 100	97 200	44 100	
	5.5	18' 1"	70.65	40 000	88 100	38 500	84 800	40 000	
	6.0	19' 8"	68.27	34 850	76 800	33 500	73 800	34 850	
	6.5	21' 4"	65.88	30 850	68 000	29 650	65 300	30 850	
	7.0	23' 0"	63.39	27 650	60 900	26 550	58 500	27 650	
	8.0	26' 3"	58.27	22 800	50 200	21 950	48 300	22 800	
	9.0	29' 6"	52.84	19 350	42 600	18 650	41 100	19 350	
	10.0	32'10"	46.95	16 800	37 000	16 150	35 600	16 800	
	12.0	39' 4"	32.76	13 200	29 100	12 700	27 900	13 200	
12.3	40' 4"	30.12	12 250	28 100	12 300	27 100	12 250		
1	4.0	13' 1"	79.94	55 300	121 900	55 300	121 900	55 300	
	4.5	14' 8"	78.11	49 000	108 000	49 000	108 000	49 000	
	5.0	16' 5"	76.26	43 950	96 800	43 950	96 800	43 950	
	5.5	18' 1"	74.40	39 800	87 700	38 400	84 600	39 800	
	6.0	19' 8"	72.53	34 750	76 600	33 400	73 600	34 750	
	6.5	21' 4"	70.63	30 700	67 700	29 550	65 100	30 700	
	7.0	23' 0"	68.70	27 500	60 600	26 450	58 300	27 500	
	8.0	26' 3"	64.77	22 700	50 000	21 800	48 000	22 700	
	9.0	29' 6"	60.70	19 250	42 400	18 500	40 700	19 250	
	10.0	32'10"	56.45	16 850	36 700	16 000	35 200	16 850	
	12.0	39' 4"	47.19	13 050	28 700	12 550	27 600	13 050	
	14.0	45'11"	36.17	10 650	23 400	10 250	22 500	10 650	
14.9	48'11"	30.08	9 800	21 600	9 450	20 800	9 800		
19.0 (62'4")	4.5	14' 9"	80.01	48 800	107 500	48 800	107 500	48 800	
	5.0	16' 5"	78.47	43 800	96 500	43 800	96 500	43 800	
	5.5	18' 1"	76.93	39 650	87 400	38 300	84 400	39 650	
	6.0	19' 8"	75.37	34 650	76 300	33 300	73 400	34 650	
	6.5	21' 4"	73.80	30 600	67 400	29 450	64 900	30 600	
	7.0	23' 0"	72.21	27 400	60 400	26 350	58 000	27 400	
	8.0	26' 3"	68.99	22 550	49 700	21 700	47 800	22 550	
	9.0	29' 6"	65.70	19 100	42 100	18 350	40 400	19 100	
	10.0	32'10"	62.32	16 500	36 300	15 850	34 900	16 500	
	12.0	39' 4"	55.19	12 900	28 400	12 400	27 300	12 900	
	14.0	45'11"	47.35	10 500	23 100	10 050	22 100	10 500	
	16.0	52' 6"	38.31	8 150	19 200	8 450	18 600	8 150	
17.5	57' 5"	30.06	7 800	17 100	7 500	16 500	7 800		

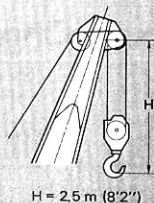
Boom length	Working radius		Boom angle	Rated load					
				BS rating		PCSA rating		JIS rating	
	m	ft in		kg	lb	kg	lb	kg	lb
22.0 (72'2")	5.1	16' 9"	79.80	42 800	94 300	42 800	94 300	42 800	
	5.5	18' 1"	78.74	39 550	87 100	38 250	84 300	39 550	
	6.0	19' 8"	77.40	34 600	76 200	33 250	73 300	34 600	
	6.5	21' 4"	76.06	30 550	67 300	29 400	64 800	30 550	
	7.0	23' 0"	74.71	27 250	60 200	26 300	57 900	27 250	
	8.0	26' 3"	71.98	22 500	49 600	21 650	47 700	22 500	
	9.0	29' 6"	69.21	19 050	41 900	18 300	40 300	19 050	
	10.0	32'10"	66.38	16 450	36 200	15 800	34 800	16 450	
	12.0	39' 4"	60.51	12 800	28 200	12 300	27 100	12 800	
	14.0	45'11"	54.27	10 400	22 900	10 000	22 000	10 400	
	16.0	52' 6"	47.47	8 700	19 100	8 350	18 300	8 700	
	18.0	59' 1"	39.80	7 400	16 300	7 100	15 600	7 400	
20.0	65' 7"	30.57	6 400	14 100	6 150	13 500	6 400		
25.0 (82'0")	5.6	18' 4"	79.87	38 650	85 200	37 150	81 900	38 650	
	6.0	19' 8"	78.94	34 500	76 000	33 200	73 100	34 500	
	6.5	21' 4"	77.77	30 500	67 200	29 300	64 500	30 500	
	7.0	23' 0"	76.59	27 250	60 000	26 200	57 700	27 250	
	8.0	26' 3"	74.21	22 400	49 300	21 550	47 600	22 400	
	9.0	29' 6"	71.81	18 950	41 700	18 200	40 100	18 950	
	10.0	32'10"	69.37	16 350	36 000	15 700	34 600	16 350	
	12.0	39' 4"	64.35	12 700	27 900	12 200	26 800	12 700	
	14.0	45'11"	59.11	10 250	22 500	9 850	21 700	10 250	
	16.0	52' 6"	53.56	8 550	18 800	8 200	18 000	8 550	
	18.0	59' 1"	47.58	7 250	15 900	6 950	15 300	7 250	
	20.0	65' 7"	40.90	6 250	13 700	6 000	13 200	6 250	
22.0	72' 2"	33.15	5 450	12 000	5 250	11 500	5 450		
22.7	74' 6"	30.03	5 200	11 400	5 050	11 100	5 250		
28.0 (91'10")	6.1	20' 0"	79.93	33 550	73 900	32 250	71 000	33 550	
	6.5	21' 4"	79.10	30 400	67 000	29 200	64 300	30 400	
	7.0	23' 0"	78.05	27 150	59 800	26 100	57 500	27 150	
	8.0	26' 3"	75.95	22 300	49 100	21 450	47 200	22 300	
	9.0	29' 6"	73.82	18 850	41 500	18 100	39 900	18 850	
	10.0	32'10"	71.67	16 250	35 800	15 600	34 300	16 250	
	12.0	39' 4"	67.28	12 600	27 700	12 100	26 600	12 600	
	14.0	45'11"	62.74	10 150	22 300	9 750	21 400	10 150	
	16.0	52' 6"	58.00	8 450	18 600	8 100	17 800	8 450	
	18.0	59' 1"	53.00	7 150	15 700	6 850	15 100	7 150	
	20.0	65' 7"	47.63	6 150	13 500	5 900	13 000	6 150	
	22.0	72' 2"	41.74	5 350	11 700	5 150	11 300	5 350	
24.0	78' 9"	35.05	4 650	10 200	4 550	10 000	4 700		
25.3	83' 0"	30.02	4 300	9 470	4 200	9 250	4 350		

Working Ranges



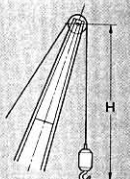
HOOK CLEARANCE

Main boom



H = 2.5 m (8'2")

Jib



H = 3.1 m (10'2")

46 m (150'11") boom
+18 m (59'1") jib
(Jib offset angle 10°)

46 m (150'11") boom
+18 m (59'1") jib
(Jib offset angle 30°)

46 m (150'11") boom
+13.5 m (44'4") jib

40 m (131'3") boom
+18 m (59'1") jib

46 m (150'11") boom
+9 m (29'6") jib

40 m (131'3") boom
+13.5 m (44'4") jib

40 m (131'3") boom
+9 m (29'6") jib

40 m (131'3") boom
+9 m (29'6") jib

40 m (131'3") boom
+9 m (29'6") jib

40 m (131'3") boom
+9 m (29'6") jib

40 m (131'3") boom
+9 m (29'6") jib

40 m (131'3") boom
+9 m (29'6") jib

40 m (131'3") boom
+9 m (29'6") jib

40 m (131'3") boom
+9 m (29'6") jib

40 m (131'3") boom
+9 m (29'6") jib

40 m (131'3") boom
+9 m (29'6") jib

40 m (131'3") boom
+9 m (29'6") jib

Main Boom & Jib Construction

Main Boom Construction

Boom length	13.0 m (42'8")	16.0 m (52'6")	19.0 m (62'4")	22.0 m (72'2")	25.0 m (82'0")	28.0 m (91'10")	31.0 m (101'9")	34.0 m (111'7")	37.0 m (121'5")	40.0 m (131'3")	43.0 m (141'1")	46.0 m (150'11")	49.0 m (160'9")	52.0 m (170'7")																																										
Element																																																								
Lower 6.5 m (21'4")	1	1	1	1	1	1	1	1	1	1	1	1	1	1																																										
Upper 6.5 m (21'4")	1	1	1	1	1	1	1	1	1	1	1	1	1	1																																										
Insert 3.0 m (9'10")	-	1	2	-	1	-	2	-	1	1	-	1	2	-	1	-	1	-																																						
Insert 6.0 m (19'8")	-	-	-	1	1	-	1	2	-	2	1	-	1	2	3	1	3	2	2	3	1	1	3	4	3	4	2	2	4	5	5	4	3	3	5	6																				
Insert 9.0 m (29'6")	-	-	-	-	1	-	-	1	-	1	1	-	1	-	1	-	2	2	1	-	1	-	2	2	1	-	-	1	2	2	1	-																								
Available hook	60 000 kg (132 200 lb) capacity hook														40 000 kg (88 200 lb) capacity hook														20 000 kg (44 100 lb) capacity hook																											
															9.0 m (29'6") jib														13.5 m (44'4") jib														18.0 m (59'1") jib													

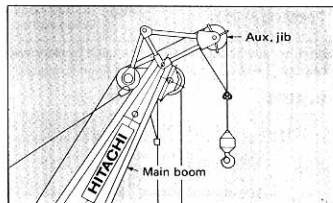
For the boom construction corresponding to the column , the boom length can not always be realized at a 3.0 m pitch.

Jib Construction

Element	Jig length	Jib length		
		9.0 m (29'6")	13.5 m (44'4")	18.0 m (59'1")
Lower	4.5 m (14'9")	1	1	1
Upper	4.5 m (14'9")	1	1	1
Insert	4.5 m (14'9")	-	1	2
Number of rope reevings		1	1	1
Available hook	6 500 kg (14 300 lb) capacity hook			

Auxiliary Jib (Optional)

Attachable to main boom top for hoisting light-weight load quickly with a single rope used. (Never use the main and auxiliary hooks at the same time.)



HOOKS

Capacity	Weight	Number of hoist reeving and maximum rated loads											
		kg (lb)											
		10	9	8	7	6	5	4	3	2	1		
60 000 kg (132 200 lb)	800 kg (1 760 lb)	60 000 (132 200)	58 500 (129 000)	52 000 (114 600)	45 500 (100 300)	39 000 (86 000)	32 500 (71 600)	26 000 (57 300)	19 500 (43 000)	13 000 (28 700)			Standard
40 000 kg (88 200 lb)	410 kg (900 lb)					39 000 (86 000)	32 500 (71 600)	26 000 (57 300)	19 500 (43 000)	13 000 (28 700)		For main boom	Optional
20 000 kg (44 100 lb)	320 kg (710 lb)								19 500 (43 000)	13 000 (28 700)	6 500 (14 300)		
30 kg (300 lb)	260 kg (570 lb)										6 500 (14 300)	For jib or aux. jib	

DRUMS

Dimensions

		Rope dia.	Width	Drum p.c.d.	Max. rope capacity
Winches	Main hoist drum	22 mm (0.866")	360 mm (14.17")	462 mm (18.19")	155 m (509')
	Aux. hoist drum	22 mm (0.866")	313 mm (12.32")	462 mm (18.19")	135 m (443')

(6th layer)

Line speed and line pull

		Max. line speed m/min (ft/min)				Effective line pull	@	Line speed	Max. starting line pull	Max. running line pull
		Hoisting		Lowering						
Winches	Main hoist drum	H	70 (230)	H	70 (230)	108 kN (11 000 kgf) (24 300 lbf)	@	38 m/min (125 ft/min)	140 kN (14 300 kgf) (31 600 lbf)	153 kN (15 600 kgf) (34 400 lbf)
		L	35 (115)	L	35 (115)					
	Aux. hoist drum	H	70 (230)	H	70 (230)	108 kN (11 000 kgf) (24 300 lbf)	@	38 m/min (125 ft/min)	140 kN (14 300 kgf) (31 600 lbf)	153 kN (15 600 kgf) (34 400 lbf)
		L	35 (115)	L	35 (115)					

H: High speed range L: Low speed range

Notes:

- Line speed and line pull are based on first layer of winding at rated engine rpm.
- Hoisting line speed varies with load.
- Line pull is based on a single line pull in high speed range.
- Effective line pull is equivalent to available line pull of mechanical drive winch.
- When hydraulic motor starts, since it is not rotating line pull is "Max. starting line pull". After motor rotating, the line pull becomes "Max. running line pull" shortly.

BOOM HOIST DRUM

Rope diameter	Hoisting line speed	Lowering line speed
16 mm (0.63")	60 m/min (197 ft/min)	60 m/min (197 ft/min)

Boom length	Working radius		Boom angle	Rated load				
	m	ft in		BS rating		PCSA rating		JIS rating
49.0 (1	9.8	32' 2"	79.90	12 950	28 500	15 500	34 100	16 100
	10.0	32'10"	79.66	12 850	28 300	15 050	33 100	15 650
	12.0	39' 4"	77.27	12 000	26 400	11 550	25 400	12 000
	14.0	45'11"	74.86	9 550	21 000	9 200	20 200	9 550
	16.0	52' 6"	72.41	7 750	17 000	7 500	16 500	7 800
	18.0	59' 1"	69.94	6 400	14 100	6 250	13 700	6 500
	20.0	65' 7"	67.42	5 350	11 700	5 250	11 500	5 450
	22.0	72' 2"	64.86	4 550	10 000	4 500	9 920	4 650
	24.0	78' 9"	62.24	3 850	8 480	3 850	8 480	4 000
	26.0	85' 4"	59.55	3 300	7 270	3 300	7 270	3 400
	28.0	91'10"	56.79	2 800	6 170	2 850	6 280	2 900
	30.0	98' 5"	53.93	2 400	5 290	2 450	5 400	2 450
	32.0	105' 0"	50.97	2 050	4 510	2 050	4 510	2 050
	34.0	111' 7"	47.87	1 700	3 740	1 700	3 740	1 700

Boom length	Working radius		Boom angle	Rated load				
	m	ft in		BS rating		PCSA rating		JIS rating
52.0 (170'7")	10.3	33'10"	79.93	11 050	24 300	14 350	31 600	14 900
	12.0	39' 4"	78.02	10 100	22 200	11 400	25 100	11 850
	14.0	45'11"	75.75	9 400	20 700	9 050	19 900	9 400
	16.0	52' 6"	73.46	7 600	16 700	7 350	16 200	7 650
	18.0	59' 1"	71.14	6 250	13 700	6 100	13 400	6 350
	20.0	65' 7"	68.79	5 200	11 400	5 150	11 300	5 350
	22.0	72' 2"	66.40	4 400	9 700	4 350	9 590	4 500
	24.0	78' 9"	63.97	3 700	8 150	3 700	8 150	3 850
	26.0	85' 4"	61.48	3 150	6 940	3 150	6 940	3 200
	28.0	91'10"	58.93	2 650	5 840	2 700	5 950	2 700
	30.0	98' 5"	56.31	2 250	4 960	2 250	4 960	2 250
	32.0	105' 0"	53.61	1 850	4 070	1 850	4 070	1 850
	34.0	111' 7"	50.81	1 550	3 410	1 550	3 410	1 550

Rated Load for Main Boom

Notes:

- The rated loads shown are based on the machine on firm level ground without traveling.
- The rated loads shown include the weight of all lifting attachments such as hook, bucket, etc. The load to be actually lifted will be the rated load minus the weight of all lifting attachments.
- The rated load for auxiliary jib hook is equal to that of main hook at the same working radius, but do not exceed maximum rated load 6 500 kg (14 300 lb).
- When the jib boom is attached to the main boom, the load to be actually lifted will be the rated load minus weight of the boom.

Jib length	9.0 m (29'6")	13.5 m (44'4")	18.0 m (59'1")
Jib weight	1 350 kg (2 970 lb)	1 650 kg (3 630 lb)	1 950 kg (4 290 lb)

- When the auxiliary jib is attached to the main boom, the load to be actually lifted is the rated load minus auxiliary jib weight.

Auxiliary jib weight 360 kg (790 lb)

- The jib can be attached to boom of 31.0 m (101'9") to 46.0 m (150'11") long.
- The auxiliary jib can be attached to the main boom of 13.0 m (42'8") to 49.0 m (160'9") long.
- Counterweight is 22 800 kg (50 300 lb).

Rated Load for Jib

Maximum jib rating

Jib length		9.0 m (29'6")	13.5 m (44'4")	18.0 m (59'1")
Jib offset angle				
Max. rated load	10°	6 500 kg (14 300 lb)	6 500 kg (14 300 lb)	6 500 kg (14 300 lb)
	30°	6 500 kg (14 300 lb)	6 000 kg (13 200 lb)	4 200 kg (9 260 lb)

Notes:

- The rated load for jib is equal to that of the main boom at the same working radius, but should not exceed maximum jib ratings shown.
The jib offset angle to the main boom is under loaded condition.
- The maximum working radius of the jib do not exceed that of the main boom used.