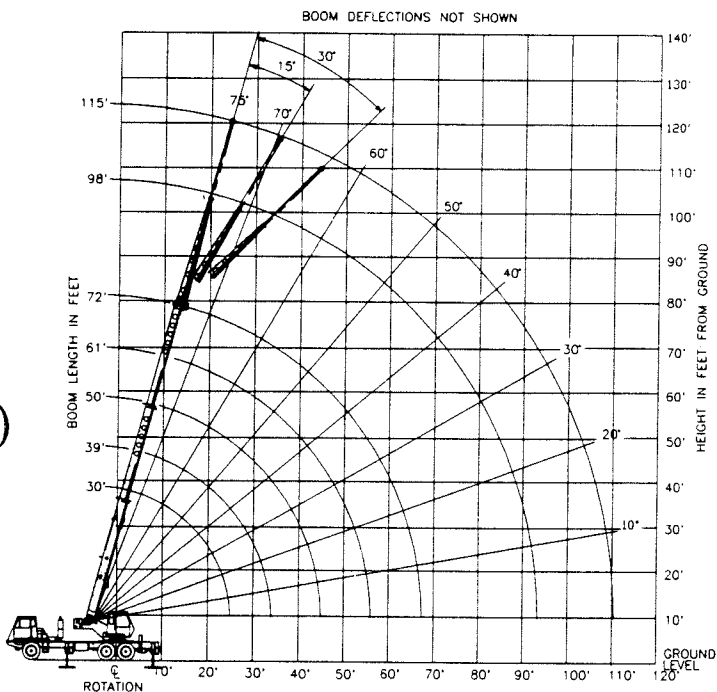


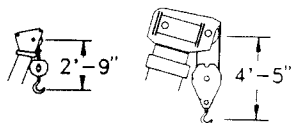
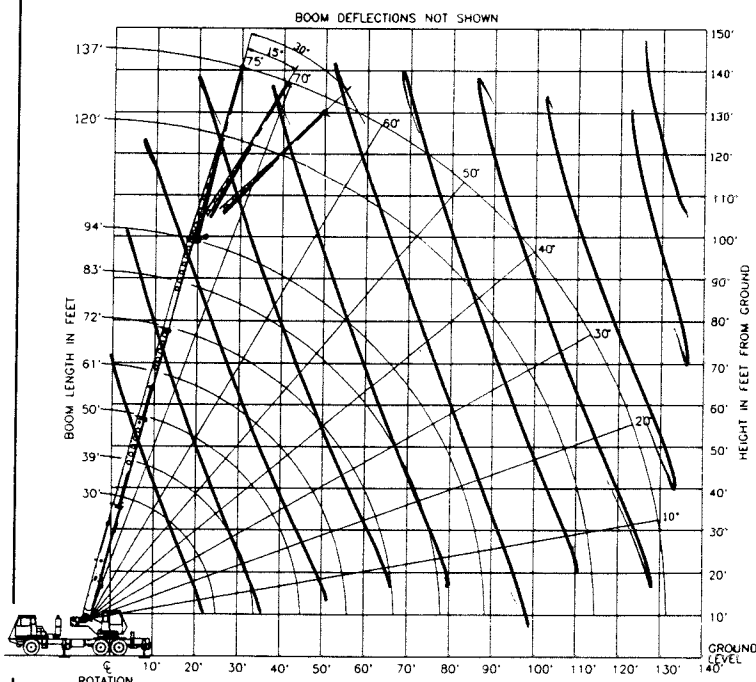
# LORAIN® MCH 225E

carrier-mounted hydraulic crane  
25 ton capacity  
range diagrams & lifting capacities

**Range Diagram  
(30' - 72' boom)**

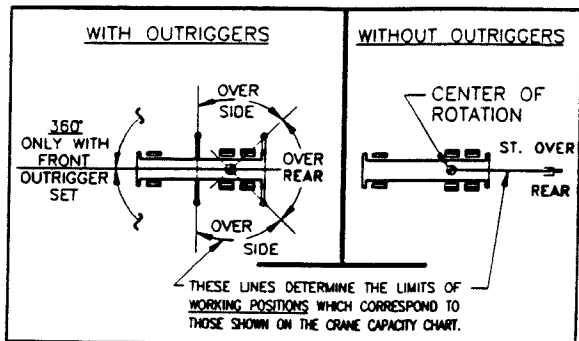


**Range Diagram  
(30' - 94' boom)**



DIMENSIONS ARE FOR LARGEST KOEHRING FURNISHED HOOK BLOCK AND HEADACHE BALL. WITH ANTI-TWO BLOCK ACTIVATED.

**CRANE WORKING CONDITIONS**

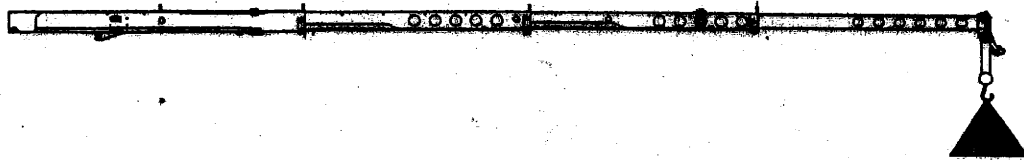


**REDUCTION IN MAIN BOOM CAPACITY**

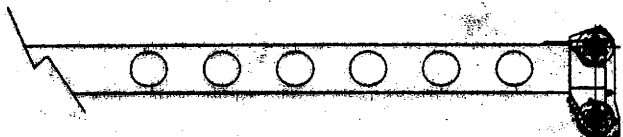
All Jibs in Stowed Position	0 Lbs.
Aux. Boom Head Sheave	100 Lbs.

**HOOK BLOCK WEIGHTS**

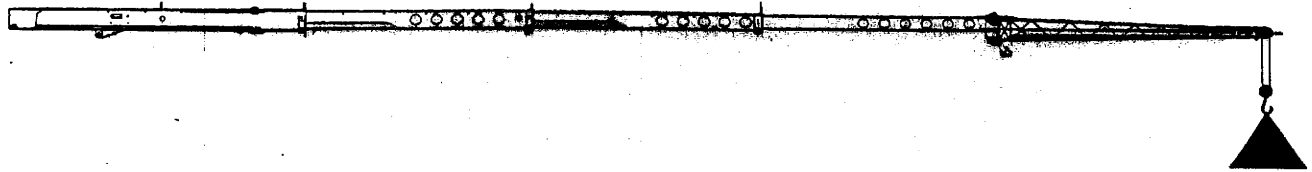
Hook & Ball	239 Lbs.
Hook Block (2 Sheave)	580 Lbs.
Hook Block (3 Sheave)	640 Lbs.
Hook Block (4 Sheave)	660 Lbs.



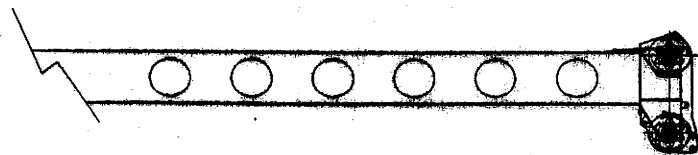
RATED LOAD ON OUTRIGGERS											
LOAD RADIUS (FT)	LOADED BOOM ANGLE (DEG)	OVER REAR (LB)	360' (LB)	LOAD RADIUS (FT)	LOADED BOOM ANGLE (DEG)	OVER REAR (LB)	360' (LB)	LOAD RADIUS (FT)	LOADED BOOM ANGLE (DEG)	OVER REAR (LB)	360' (LB)
BOOM LENGTH 30 FT				BOOM LENGTH 39 FT				BOOM LENGTH 50 FT			
10.0	62.5	50000*	50000*	10.0	69.1	46500*	46500*				
12.0	58.1	45000*	45000*	12.0	65.9	42100*	42100*	12.0	71.4	39800*	39800*
15.0	51.0	39200*	39200*	15.0	60.9	36700*	36700*	15.0	67.7	34400*	34400*
20.0	37.0	27700*	27700*	20.0	51.9	28400*	28400*	20.0	61.4	28300*	28300*
25.0	13.2	20800*	19800	25.0	41.7	21400*	20600	25.0	54.5	22000*	21100
25.6	.0	19800*	18400	30.0	28.5	16800*	14300	30.0	47.0	17300*	14800
				34.3	.0	13800*	10600	35.0	38.4	14000*	11000
								40.0	27.6	11400*	8300
BOOM LENGTH 61 FT				BOOM LENGTH 72 FT				45.0	7.8	9200	6300
								45.3	.0	9000	6100
15.0	71.9	32900*	32900*					BOOM LENGTH 83 FT			
20.0	66.9	26800*	26800*	20.0	70.6	25800*	25800*				
25.0	61.6	22300*	21400	25.0	66.3	21700*	21500	25.0	69.6	18900*	18900*
30.0	56.1	17600*	15000	30.0	61.8	17800*	15200	30.0	65.9	15800*	15300
35.0	50.2	14300*	11200	35.0	57.2	14500*	11400	35.0	62.0	13700*	11500
40.0	43.7	11800*	8600	40.0	52.3	12000*	8800	40.0	58.0	11900*	8900
45.0	36.2	9600	6700	45.0	47.0	9800	6900	45.0	53.8	9900	7000
50.0	27.1	7900	5300	50.0	41.2	8100	5500	50.0	49.4	8200	5600
55.0	12.8	6500	4100	55.0	34.7	6700	4400	55.0	44.6	6900	4500
56.3	.0	6100	3800	60.0	28.7	5600	3400	60.0	39.4	5800	3600
BOOM LENGTH 94 FT				65.0	15.3	4700	2700	65.0	33.5	4800	2900
				67.3	.0	4200	2300	70.0	26.4	4100	2200
25.0	72.1	15200*	15200*					75.0	16.8	3400	1700
30.0	68.8	13000*	13000*					78.3	.0	3000	1300
35.0	65.5	11300*	11300*								
40.0	62.1	9900*	8900								
45.0	58.6	8700*	7100								
50.0	54.9	7800*	5700								
55.0	51.1	7000*	4600								
60.0	47.0	5900	3700								
65.0	42.7	5000	3000								
70.0	37.9	4200	2400								
75.0	32.5	3500	1800								
80.0	26.2	3000	1400								
85.0	18.0	2400									
89.3	.0	2000									



Add 100Lbs to the chart values if the AUX BOOM HEAD SHEAVE is NOT ERECTED.



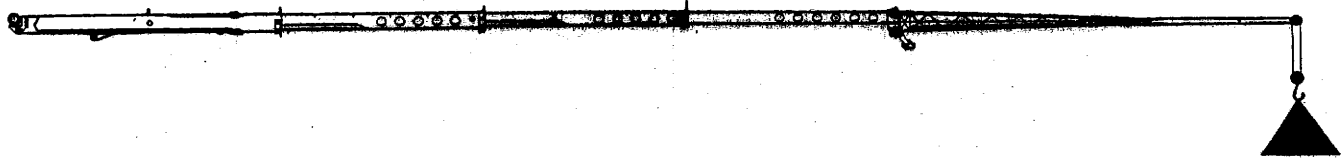
26 FT OFFSET JIB						
LOADED BOOM ANGLE (DEG)	0' OFFSET		15' OFFSET		30' OFFSET	
	LOAD RADIUS (REF) (FT)	360° (LB)	LOAD RADIUS (REF) (FT)	360° (LB)	LOAD RADIUS (REF) (FT)	360° (LB)
75	34'-11"	9,000*	40'-2"	7,300*	45'-0"	5,500*
73	38'-8"	8,500*	44'-2"	6,700*	48'-9"	5,200*
71	43'-2"	8,000*	48'-6"	6,200*	53'-2"	4,900*
68	48'-10"	7,200*	53'-9"	5,600*	57'-10"	4,500*
65	54'-10"	4,800*	59'-7"	4,800*	63'-7"	4,000*
62	59'-8"	3,300	64'-2"	3,200	67'-11"	3,500
59	64'-9"	2,700	69'-6"	2,400	73'-2"	2,500
55	71'-4"	2,100	75'-11"	1,800	78'-6"	1,700
51	76'-11"	1,600	81'-1"	1,200	83'-11"	1,100
47	83'-0"	1,000				



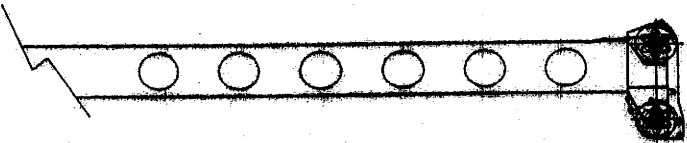
Add 100Lbs to the chart values if the AUX BOOM HEAD SHEAVE is NOT ERECTED.

SET-UP:

1. Crane load ratings are based on the crane being leveled and standing on a firm, uniform supporting surface.
2. Crane load ratings on outriggers are based on all outrigger beams being fully extended and the tires raised free of the supporting surface.



43 FT OFFSET JIB						
LOADED BOOM ANGLE (DEG)	0' OFFSET		15' OFFSET		30' OFFSET	
	LOAD RADIUS (REF) (FT)	360' (LB)	LOAD RADIUS (REF) (FT)	360' (LB)	LOAD RADIUS (REF) (FT)	360' (LB)
75	39'-11"	5000*	49'-6"	3200*	57'-7"	2400*
73	45'-1"	4800*	54'-1"	3100*	61'-9"	2300*
71	50'-6"	4600*	59'-5"	2900*	66'-11"	2200*
68	56'-5"	4300*	64'-8"	2700*	71'-10"	2100*
65	64'-2"	3900*	72'-3"	2500*	78'-10"	2100*
62	69'-7"	2600	77'-4"	2000	83'-6"	2000
59	76'-0"	2000	83'-6"	1600	89'-3"	1600
55	83'-6"	1400	90'-1"	1100	95'-6"	1100

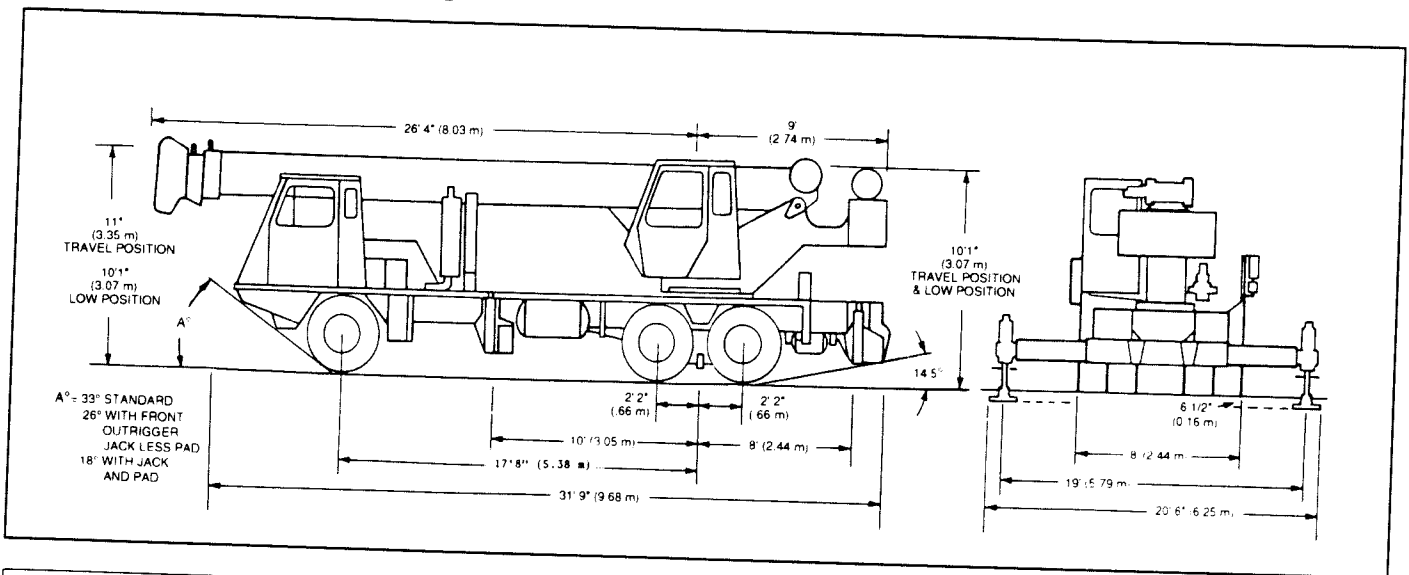


Add 100Lbs to the chart values if the AUX BOOM HEAD SHEAVE is NOT ERECTED.

SET-UP:

1. Crane load ratings are based on the crane being leveled and standing on a firm, uniform supporting surface.
2. Crane load ratings on outriggers are based on all outrigger beams being in contact with the supporting surface.

# GENERAL DIMENSIONS



WEIGHTS & AXLE LOADS	GROSS WEIGHT (LBS.)	UPPER IN TRAVEL POSITION		GROSS WEIGHT (KG.)	UPPER IN TRAVEL POSITION	
		FRONT	REAR		FRONT	REAR
Basic Crane with 6CTAA-8.3L Engine, 72' (22.19 m) Boom, 3600 lb. (1633 kg) Counterweight, 16.5 x 22.5 Front Tires 9.00 x 20 Rear with spoke wheels.	46,285	13,280	33,005	20,991	6,023	14,968
<b>9' (2.74 m) 4-Section, Full Power Boom</b>	<b>+ 2,560</b>	<b>+ 1,880</b>	<b>+ 680</b>	<b>+ 1,161</b>	<b>+ 853</b>	<b>+ 300</b>
26' (7.92 m) Swing-on Offsettable Jib	+ 1,100	+ 1,200	+ 100	+ 499	+ 544	+ 45
26'-43' (7.92-13.10 m) Swing-on Offsettable Jib	+ 1,500	+ 1,550	- 10	+ 680	+ 703	- 23
Auxiliary Boom Head	+ 100	+ 180	- 80	+ 45	+ 82	- 37
Auxiliary Winch Controls and Plumbing Only	+ 75	- 25	+ 100	+ 34	- 11	+ 45
Auxiliary Winch with Wire Rope	+ 115	- 50	+ 165	+ 52	- 23	+ 75
Pintle Hook (Rear)	+ 50	- 26	+ 76	+ 23	- 12	+ 34
360° Mechanical House Lock	+ 85	0	+ 85	+ 39	0	+ 39
Heater/Defroster (Upper)	+ 60	- 10	+ 50	+ 27	- 5	+ 22
10.00 x 20 tires (Rear Only) Highway Tread	+ 144	0	+ 144	+ 65	0	+ 65
Automatic Transmission	+ 510	+ 300	+ 210	+ 231	+ 136	+ 95
7200 lb. (3266 kg) Counterweight on Upper 1550 lb. (703 kg) Counterweight on Front Bumper	+ 4,650	+ 245	+ 4,895	+ 2,109	+ 111	+ 2,220
30 ton (27.2 mt) Hook Block (On Bumper - 4 Sheave)	+ 660	+ 930	- 270	+ 299	+ 422	- 123
30 ton (27.2 mt) Hook Block (On Bumper - 3 Sheave)	+ 640	+ 900	- 260	+ 290	+ 408	- 118
22 ton (120.0 mt) Hook Block (On Bumper - 2 Sheave)	+ 580	+ 820	- 240	+ 263	+ 372	- 109
6.25 ton (6.67 mt) Hook and Ball (in tool box)	+ 240	+ 340	- 100	+ 109	+ 154	- 45
Electric Remote Control	+ 200	+ 100	+ 100	+ 91	+ 45	+ 45

NOTE: Weights are for Lorain supplied equipment and subject to 2% variation due to manufacturing tolerances.

WE RESERVE THE RIGHT TO AMEND THESE SPECIFICATIONS AT ANY TIME WITHOUT NOTICE. THE ONLY WARRANTY APPLICABLE IS OUR STANDARD WRITTEN WARRANTY APPLICABLE TO THE PARTICULAR PRODUCT AND SALE. WE MAKE NO OTHER WARRANTY, EXPRESSED OR IMPLIED.



Koehring Cranes & Excavators  
Waverly, Iowa 50677