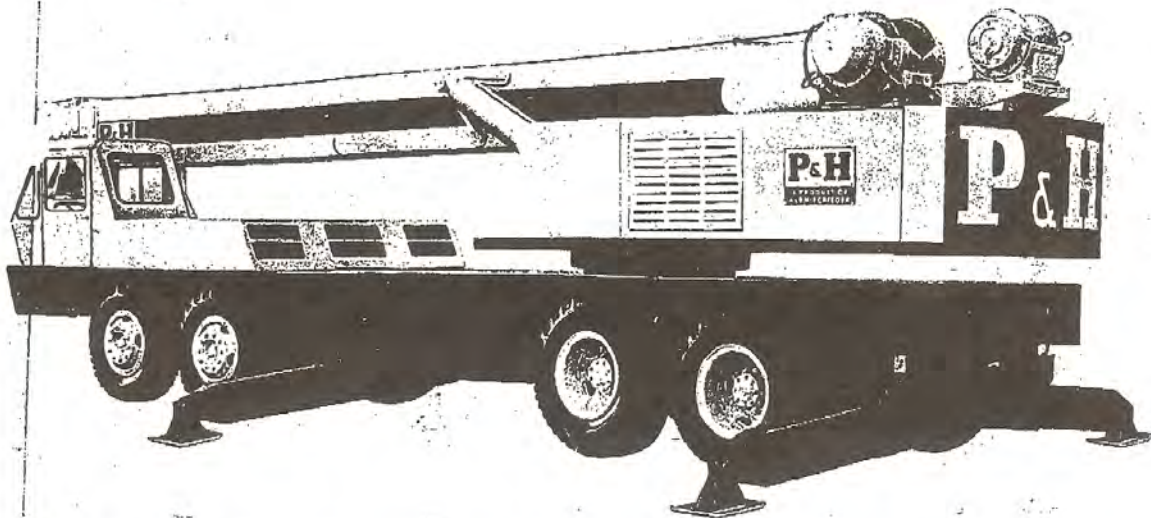


P&H

T-300

NAME
CONTRACTORS
NAME
P&H

30-TON FULL HYDRAULIC TRUCK CRANE



OUTLIFTS, OUTPERFORMS ALL OTHER HYDRAULIC TRUCK CRANES IN ITS CLASS

- 3-section, all-hydraulic 80' telescoping boom
- 130' maximum reach
- Low center of gravity for greater capacity at long radii
- Low overall height—under 10'
- Powerful P&H Carrier
- Exclusive P&H Outriggers with independent horizontal and vertical motions... self-storing floats
- Exclusive P&H Volu-Matik® Hydraulic System with 5 separate circuits and independent pumps
- Big single engine for greater pump drive power
- Controlled free-fall for faster load lowering... optional
- Boom tip lowers below horizontal for easy reeving or jib installation
- Easier operation with combination hand lever/foot pedal control of boom hoist and boom telescope

T 1300

RATED LIFTING CAPACITY IN POUNDS															
OVER SIDE WITH OUTRIGGERS							OVER REAR WITH OUTRIGGERS								
OPERATING RADIUS IN FEET	BOOM LENGTH IN FEET						OPERATING RADIUS IN FEET	BOOM LENGTH IN FEET							
	32	40	48	56	64	72		80	32	40	48	56	64	72	80
12	80,000	50,000	45,000	40,000				60,000	50,000	45,000	40,000				
15	47,500	45,000	40,000	36,500	34,000	32,000		47,500	45,000	40,000	38,500	34,000	32,000		
20	36,500	36,500	34,000	32,000	30,000	28,000	26,000	36,500	36,500	34,000	32,000	30,000	28,000	26,000	
25	26,200	26,200	26,200	26,200	25,600	24,200	22,000	31,500	31,500	29,600	27,000	25,600	24,200	22,000	
30		19,000	19,000	19,000	18,000	19,000	19,000			27,000	25,000	22,800	21,500	20,400	19,000
35			14,500	14,500	14,500	14,500	14,500				21,000	19,500	18,400	17,300	18,000
40				11,500	11,800	11,500	11,500					16,900	15,800	16,000	16,000
50					7,800	7,800	7,800						11,700	11,400	10,500
60						5,400	5,400							8,500	8,300
70							3,700								5,500
75							3,000								5,700

Above heavy line ratings are based on machinery strength, below heavy line ratings do not exceed 85% of tipping. All ratings include weight of hooks, blocks, slings and all other load handling accessories and are based on outriggers being extended to a fulcrum point 8'-0" from center of frame. Operating radius is horizontal distance from centerline of rotation to a vertical line through the center of gravity of the load. At radii where no ratings are shown on plate, operation is not intended or approved. Ratings are contingent upon freely suspended loads and machine standing on a firm level, uniformly supporting surface. Safe loads depend upon ground conditions, radius of operation and proper handling, all of which must be taken into account by the operator. Hoist reeving with winch is based on 7500 pounds per line. - boom lengths not shown use the capacities in the next longer boom length. Ratings are based on standard machine with 8,000 pounds of counterweight.

NOTE: Operation of this equipment in excess of rated loads and disregard of instructions voids the warranty.

25 FOOT JIB			
MINIMUM BOOM ANGLE	NO OFFSET	15° OFFSET	30° OFFSET
75°	8,000	4,500	3,500
70°	6,000	3,750	2,600
65°	4,800	3,250	2,300
60°	4,000	2,800	2,000
50°	3,000	2,200	1,500
35°	2,000	1,500	1,000

WARNING: Do not extend boom over side unless outriggers are fully set. Maximum jib offset allowed 30°.

The jib capacities are based upon the structural strength of the jibs and single part line. When using the jibs with extended booms the main boom load chart must not be exceeded. With jib installed lifting capacities over main boom head must be reduced 1250 pounds.

LIFTING CAPACITY IN POUNDS - WITH OPTIONAL 100-FT. BOOM

OVER SIDE WITH OUTRIGGERS												
OPERATING RADIUS IN FEET	MANUAL SECTION RETRACTED				MANUAL SECTION EXTENDED		OVER REAR WITH OUTRIGGERS					
	BOOM LENGTH IN FEET				MINIMUM BOOM ANGLE	BOOM LENGTH IN FEET 52 to 100	MANUAL SECTION RETRACTED				MANUAL SECTION EXTENDED	
	32	48	64	80			32	48	64	80	MINIMUM BOOM ANGLE	BOOM LENGTH IN FEET 52 to 100
12	60,000	45,000					12	60,000	45,000			
15	47,500	40,000					15	47,500	40,000			
20	33,800	33,800					20	36,500	34,000	34,000		
25	21,400	21,400	30,000	26,000	75°	10,000	25	31,500	29,600	25,800	26,000	
30		18,000	18,000	16,000	72°	8,500	30		25,000	21,500	19,000	
35		12,200	12,200	12,200	68°	7,600	35		21,000	18,400	18,000	
40		9,500	9,500	9,500	68°	7,000	40		17,000	15,800	13,600	
50			6,000	6,000	64°	6,500	50			11,100	10,800	
60				3,800	58°	5,900	60				7,700	
70					52°	5,200	70				5,400	
80					43°	3,500	80				5,400	
90					33°	2,400	90				5,400	
					20°	1,500	90				3,700	

25 FOOT JIB						
MANUAL SECTION RETRACTED				MANUAL SECTION EXTENDED		
MINIMUM BOOM ANGLE	NO OFFSET	15° OFFSET	30° OFFSET	MINIMUM BOOM ANGLE	NO OFFSET	15° OFFSET
75°	8,000	4,500	3,500	75°	4,500	2,600
70°	6,000	3,750	2,600	70°	3,200	2,000
65°	4,800	3,250	2,300	65°	2,750	1,700
60°	4,000	2,800	2,000	60°	2,350	1,450
50°	3,000	2,200	1,500	50°	1,800	1,150
35°	2,000	1,500	1,000	45°	1,300	1,000

WITHOUT OUTRIGGERS	
OPERATING RADIUS IN FEET	OVER REAR
12	24,000
15	20,800
20	16,400
25	13,000
30	10,400
35	8,200
40	6,400
50	3,500

WARNING: Ratings without outriggers are based on proper tire conditions. Do not extend boom over the side unless outriggers are fully set.

HOIST REEVING								
PARTS OF LINE	1	2	3	4	5	6	7	8
MAXIMUM LOAD	7,500	15,000	22,500	30,000	37,500	45,000	52,500	60,000

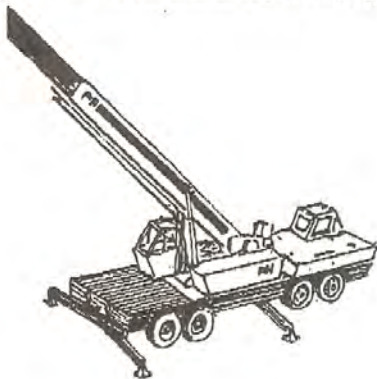
NOTES PERTAINING TO JIB

- Jib capacities are based on structural strength and single part line. When using the jibs with extended boom, the main boom load chart must not be exceeded with jib erected. Reduce main boom ratings 1,250 pounds.
- Use of outriggers is recommended when boom is equipped with jib.

CRANE SERVICE RATING NOTES

- Ratings do not exceed 85% of the tipping load.
- Ratings above heavy line are based on structural strength.
- Ratings with outriggers are based on outriggers set to a 16 foot fulcrum point.
- Loads are to be freely suspended with machine standing on a firm, level, uniform supporting surface.
- "Safe" loads depend on proper handling. Shock and side loading must be avoided.
- Operating radius is distance from center of rotation to center of load. Do not exceed maximum radius. Weights of hook block, slings, and all load handling accessories must be deducted from the rating.
- For boom lengths not shown, use the ratings for the next longer boom length.
- Ratings are based on a standard machine with 8,000 pounds of counterweight.

NOTE: Operation of this equipment in excess of rated loads and disregard of operating instructions voids the warranty.



LIFTING CAPACITY IN POUNDS - WITH OPTIONAL 100-FT. BOOM

OVER SIDE WITH OUTRIGGERS													
OPERATING RADIUS IN FEET	MANUAL SECTION RETRACTED				MANUAL SECTION EXTENDED		OVER REAR WITH OUTRIGGERS						
	BOOM LENGTH IN FEET				MINIMUM BOOM ANGLE	ROOM LENGTH IN FEET 52 to 100	MANUAL SECTION RETRACTED				MANUAL SECTION EXTENDED		
	32	48	54	80			OPERATING RADIUS IN FEET	BOOM LENGTH IN FEET			MINIMUM BOOM ANGLE	ROOM LENGTH IN FEET 52 to 100	
12	60,000	45,000					12	60,000	45,000				
15	47,500	40,000					15	47,500	40,000	34,000			
20	33,800	33,800	30,000	26,000	75°	10,000	20	36,500	34,000	30,000	26,000	75°	10,000
25	21,400	21,400	21,400	21,400	72°	8,500	25	31,500	29,600	25,600	22,000	72°	8,500
30		16,000	18,000	16,000	68°	7,600	30		25,000	21,500	19,000	68°	7,600
35		12,200	12,200	12,200	68°	7,000	35		21,000	18,400	18,000	66°	7,000
40		8,500	9,500	8,500	64°	6,500	40		17,000	15,800	13,600	64°	6,500
50			6,000	6,000	56°	5,900	50			11,100	10,500	56°	5,900
60				3,800	52°	5,200	60				7,700	52°	5,200
70				2,250	43°	3,500	70				5,400	43°	3,500
80					33°	2,400	80					33°	2,400
90					20°	1,500	90					20°	1,500

25 FOOT JIB						
MINIMUM BOOM ANGLE	MANUAL SECTION RETRACTED			MANUAL SECTION EXTENDED		
	NO OFFSET	15° OFFSET	30° OFFSET	MINIMUM BOOM ANGLE	NO OFFSET	15° OFFSET
75°	8,000	4,500	3,500	75°	4,500	2,600
70°	8,000	3,750	2,600	70°	3,200	2,000
65°	4,800	3,250	2,300	65°	2,250	1,700
60°	4,000	2,800	2,000	60°	2,350	1,450
50°	3,000	2,200	1,500	50°	1,800	1,150
35°	2,000	1,500	1,000	45°	1,500	1,000

WITHOUT OUTRIGGERS	
OPERATING RADIUS IN FEET	OVER REAR
12	24,000
15	20,800
20	16,400
25	13,000
30	10,400
35	8,200
40	6,400
50	3,500

WARNING: Ratings without outriggers are based on proper tire conditions. Do not extend boom over the side unless outriggers are fully set.

HOIST REEVING								
PARTS OF LINE	1	2	3	4	5	6	7	8
MAXIMUM LOAD	7,500	15,000	22,500	30,000	37,500	45,000	52,500	60,000

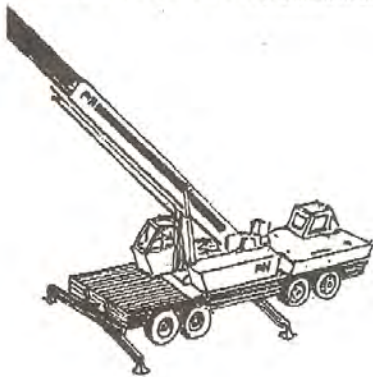
NOTES PERTAINING TO JIB

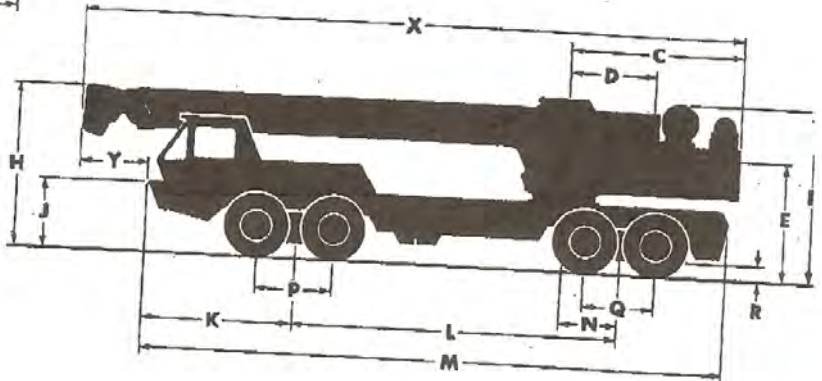
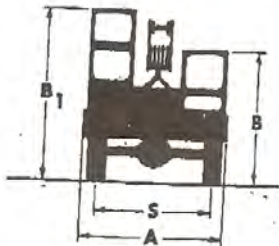
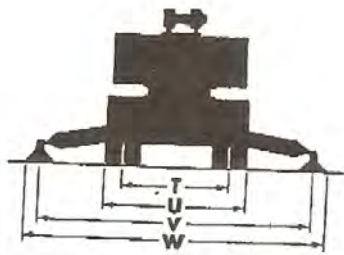
- Jib capacities are based on structural strength and single part line. When using the jibs with extended boom, the main boom load chart must not be exceeded with jib erected. Reduce main boom ratings 1,250 pounds.
- Use of outriggers is recommended when boom is equipped with jib.

CRANE SERVICE RATING NOTES

- Ratings do not exceed 85% of the tipping load.
- Ratings above heavy line are based on structural strength.
- Ratings with outriggers are based on outriggers set to a 16 foot fulcrum point.
- Loads are to be freely suspended with machine standing on a firm, level, uniform supporting surface.
- "Safe" loads depend on proper handling. Shock and side loading must be avoided.
- Operating radius is distance from center of rotation to center of load. Do not exceed maximum radius. Weights of hook block, slings, and all load handling accessories must be deducted from the rating.
- For boom lengths not shown, use the ratings for the next longer boom length.
- Ratings are based on a standard machine with 8,000 pounds of counterweight.

NOTE: Operation of this equipment in excess of rated loads and disregard of operating instructions voids the warranty.





HEIGHT IN FEET ABOVE GROUND

120
115
110
105
100
95
90
85
80
75
70
65
60
55
50
45
40
35
30
25
20
15
10
5
0



A	Overall Width (Front)	8'-0"
B	Overall Height (Carrier Cab)	7'-9-1/4"
B ₁	Overall Height (Operators Cab)	9'-10"
C	Tail Swing	10'-5-3/8"
D	Centerline of Rotation to Center of Boom Pivot	5'-0"
E	Center of Boom Pivot to Ground	6'-8-3/4"
F	Overall Height (Main Winch)	9'-9"
H	Overall Height (Boom Horizontal)	9'-4"
J	Top of Bumper to Ground	3'-10-1/2"
K	Center of Front Bogie to Front of Carrier	8'-2-1/2"
L	Center of Front Bogie to Center of Rear Bogie	18'-8"
M	Overall Length of Carrier	33'-1-1/2"
N	Center of Rear Bogie to Center of Rotation	3'-4"

P	Distance between Axles (Front Bogie)	4'-1"
Q	Distance between Axles (Rear Bogie)	4'-2"
R	Ground Clearance (Rear Axle Hsg.)	0'-10-1/2"
S	Track (Front)	6'-5-3/4"
T	Track (Rear)	5'-11-7/8"
U	Overall Width (Rear)	8'-0"
V	Effective Length of Outriggers	16'-0"
W	Overall Length of Outriggers	17'-5-3/4"
X	Overall Length (Boom Retracted)	38'-1-3/8"
Y	Front of Carrier to End of Boom	4'-1-1/2"
Z _a	Vehicle Turning Circle (Not Shown)	87'-0"
Z _b	Vehicle Clearance Circle (Not Shown)	94'-8"