

Preliminary

Hydraulic Crawler Crane

**CK**

**1600G**

Model : CK1600G

**LUFFING BOOM / JIB**

Max. Lifting Capacity:

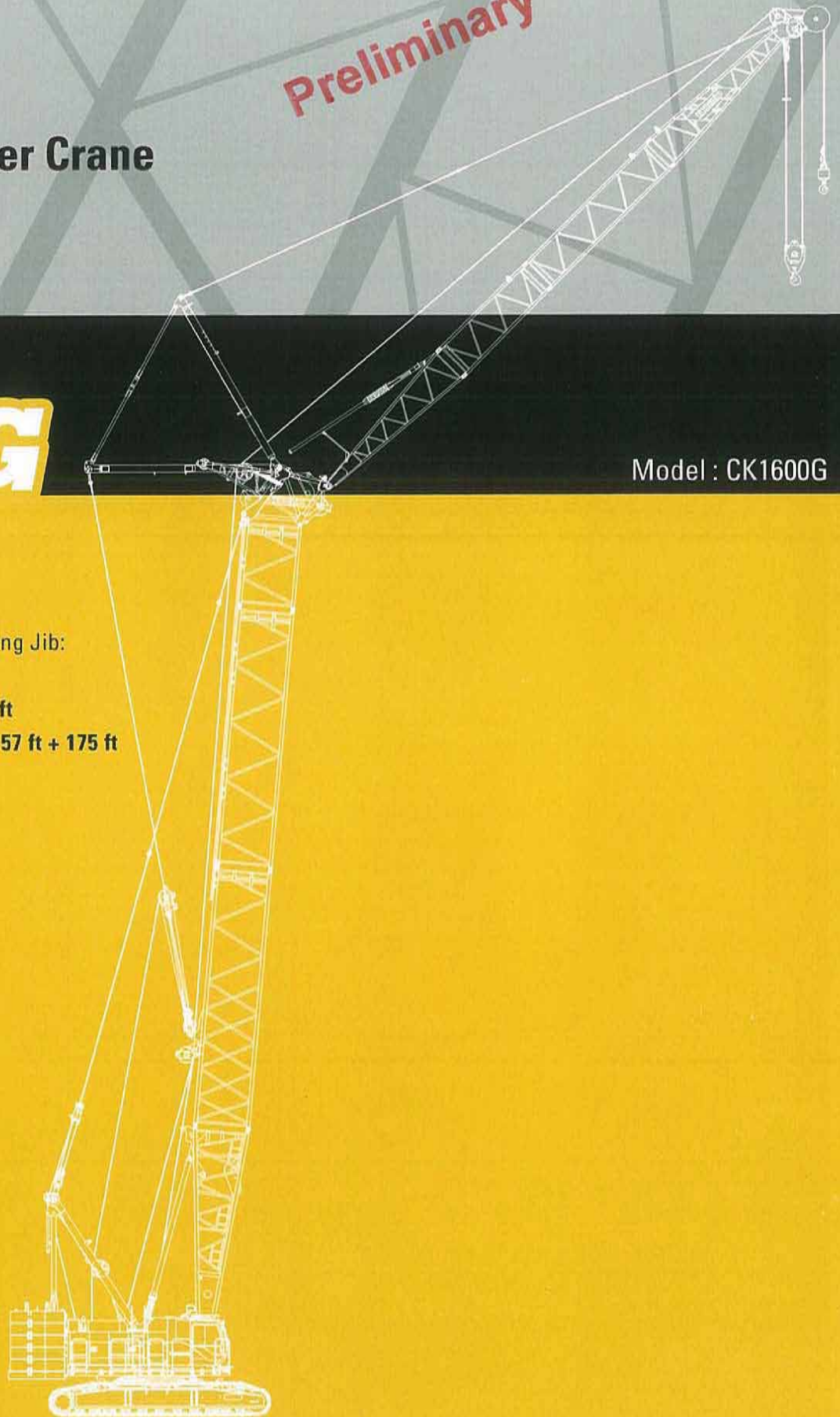
**170,000 lbs x 26.0 ft**

Max. Lifting Capacity With Luffing Jib:

**79,000 lbs x 40.0 ft**

Max. Luffing Boom Length: **117 ft**

Max. Luffing Jib Combination: **157 ft + 175 ft**



**KOBELCO**



# **CK1600G LUFFING CONTENTS**

**3**

**SPECIFICATIONS**

---

**5**

**GENERAL DIMENSIONS**

---

**7**

**BOOM AND JIB ARRANGEMENTS**

---

**9**

**WORKING RANGES**

---

**13**

**SUPPLEMENTAL DATA**

---

**15**

**LIFTING CAPACITY**

---

**31**

**TRANSPORTATION PLAN**

---

**33**

**PARTS AND ATTACHMENTS**

---



# SPECIFICATIONS



## Power Plant

**Model:** HINO P11C-VC

**Type:** 4 cycle, water-cooled, vertical in-line 6, direct injection, turbo-charger, intercooler

Complies with US EPA Tier Interim Tier IV and NRMM (Europe) Stage IIIB

**Displacement:** 642 cu in (10.520 liters)

**Rated Power:** 363 HP/1,850 rpm (271 kW/1,850 min<sup>-1</sup>)

**Max. torque:** 1,084 lbf-ft/1,400 rpm (1,469 N·m/1,400 min<sup>-1</sup>)

**Cooling system:** Water-cooled

**Starter:** 24V-6kW

**Radiator:** Corrugated type core, thermostatically controlled

**Air cleaner:** Dry type with replaceable paper element

**Throttle:** Twist grip type hand throttle, electrically actuated

**Fuel filter:** Replaceable paper element

**Batteries:** Two 12V x 136 Ah/5HR capacity batteries, series connected

**Fuel tank capacity:** 106 US gal. (400 liters)



## Hydraulic System

**Main pumps:** 3 variable displacement piston pumps

**Control:** Full-flow hydraulic control system for infinitely variable pressure to all winches, propel and swing. Controls respond instantly to the touch, delivering smooth function operation.

**Cooling:** Oil-to-air heat exchanger (plate-fin type)

**Filtration:** Full-flow and bypass type with replaceable element

**Electrical system:** All wiring corded for easy servicing, individual fused branch circuits.

**Max. relief valve pressure:**

**Load hoist, boom hoist and propel system:**

4,626 psi (31.9 MPa)

**Swing system:** 3,989 psi (27.5 MPa)

**Control system:** 783 psi (5.4 MPa)

**Hydraulic tank capacity:** 141.3 US gal. (535 liters)



## Boom Hoisting System

Powered by a hydraulic motor through a planetary reducer.

**Brake:** A spring-set, hydraulically released multiple-disc brake is mounted on the boom hoist motor and operated through a counter-balance valve.

**Drum lock:** External ratchet for locking drum

**Drum:** Single drum, grooved for 25/32 inch (20 mm) dia. wire rope

**Line speed:** Single line on first drum layer

**Hoisting/Lowering:** 175 to 6.6 ft/min (48 to 2 m/min)

**Diameter of wire rope**

**Main winch:** 1-1/32 in. x 902 ft. (26 mm x 275 m)

**Aux. winch:** 1-1/32 in. x 837 ft. (26 mm x 255 m)

**Third winch:** 1-1/32 in. x 787 ft. (26 mm x 240 m)

**Boom hoisting/lowering:** 25/32 in. x 623 ft (20 mm x 190 m)

**Boom guy line:** 1-3/16 in. (30 mm)

**Boom backstops:** Required for all boom length



## Load Hoist System

Front and rear drums for load hoist powered by a hydraulic variable plunger motors, driven through planetary reducers.

**Negative brake:** A spring-set, hydraulically released multiple-disc brake is mounted on the hoist motor and operated through a counter-balance valve. (Positive free fall brake is optional)

**Drum lock:** External ratchet for locking drum

**Drums:**

**Front drums:**

2ft 2-3/16 inch (666 mm) P.C.D x 2 ft 2-15/32 inch (672 m)

Lg., grooved for 1-1/32 inch (26 mm) wire rope. Rope capacity is 902 ft (275 m) working length and 1,148 ft (350 m) storage length.

**Rear drums:**

2 ft 2-3/16 inch (666 mm) P.C.D x 2ft 2-15/32 inch (672 m)

Lg., grooved for 1-1/32 inch (26 mm) wire rope. Rope capacity is 837 ft (255 m) working length and 1,148 ft (350m) storage length.

**Line speed:** Single line on the first layer

**Hoisting/Lowering:** 394 to 10 ft

**Line pull:**

**Max. line pull (Single line):** 52,500 lbs (233 kN)

**Rated line pull:** 29,500 lbs (132 kN)



## Swing System

Swing unit is powered by hydraulic motor driving spur gears through planetary reducers (2 set), the swing system provides 360° rotation.

**Swing parking brakes:** A spring-set, hydraulically released multiple-disc brake is mounted on swing motor.

**Swing circle:** Single-row ball bearing with an integral internally cut swing gear.

**Swing lock:** Manually, four position lock for transportation

**Swing speed:** 2.1 rpm (min<sup>-1</sup>)



## Upper Structure

Torsion-free precision machined upper frame. All components are located clearly and service friendly. Engine will with low noise level.

**Counter weight:** 121,300 lbs



## Cab & Control

Totally enclosed, full vision cab with safety glass, fully adjustable, high backed seat with a headrest and armrests, and intermittent wiper and window washer (skylight and front window).



**Cab fittings:**

Air conditioner, convenient compartment (for tool), cup holder, ashtray, cigarette lighter, sun visor, roof blind, tinted glass, floor mat, footrest, shoe tray, and foot acceleration pedal.

**Controls:**

Four adjustable levers for front drum, rear drum, boom drum and swing controls.

**Lower Structure**

Steel-welded carbody with axles. Crawler assemblies are designed with quick disconnect feature for individual removal as a unit from axles. Crawler belt tension is maintained by hydraulic jack force on the track adjusting bearing block.

**Carbodyweight:** 23,810 lbs

**Crawler drive:** Independent hydraulic propel drive is built into each crawler side frame. Each drive consists of a hydraulic motor propelling a driving tumbler through a planetary gear box. Hydraulic motor and gear box are built into the crawler side frame within the shoe width.

**Crawler brakes:** Spring-set, hydraulically released parking brakes are built into each propel drive.

**Steering mechanism:** A hydraulic propel system provides both skid steering (driving one track only) and counter-rotating steering (driving each track in opposite directions).

**Track rollers:** Sealed track rollers for maintenance-free operation.

**Shoe (flat):** 4 ft wide each crawler

**Max. gradeability:** 30%

**Weight**

Including upper and lower machine, 121,300 lbs counterweight and 23,810 lbs carbody weight, basic boom (or basic boom + basic jib), hook, and other accessories.

**Weight:** 304,200 lbs (136 t)

**Ground pressure:** 11.7 psi (106 kPa)

**Attachment****Boom and Jib:**

Welded lattice construction using tubular, high-tensile steel chords with pin connections between sections.

**Boom and Jib Length**

	Min. Length (Min. Combination)	Max. Length (Max. Combination)
Luffing Boom	47 ft	157 ft
Luffing Jib	107 ft + 75 ft	157 ft + 175 ft

**Main Specifications (Model: CK1600G)**

<b>Luffing Boom</b>	
Max. Lifting Capacity	170,000 lbs
Length	47 ~ 157 ft
<b>Luffing Jib</b>	
Max. Lifting Capacity	79,000 lbs
Max. Length	175 ft
Max. Combination	200 ft + 100 ft
Luffing Angle	63° ~ 88°
<b>Power Plant</b>	
Model	HINO P11C-VC
Engine Output	363 HP/1,850 rpm
Fuel Tank Capacity	106 US gal. (400 liters)
<b>Main &amp; Aux. Winch</b>	
Max. Line Speed	390 ft/min (120 m/min): 1st layer
Rated Line Pull (single Line)	29,500 lbs (132 kN)
Wire Rope Diameter	1-1/32 in (26 mm)
Brake Type	Spring set hydraulically released (Negative)

**Working Speed**

Swing Speed	2.1 rpm (min <sup>-1</sup> )
Travel Speed	0.70/0.56 mph

**Hydraulic System**

Main pumps	3 variable displacement
Max. Pressure	4,626 psi (31.9 MPa)
Hydraulic Tank Capacity	141.3 US gal. (535 liters)

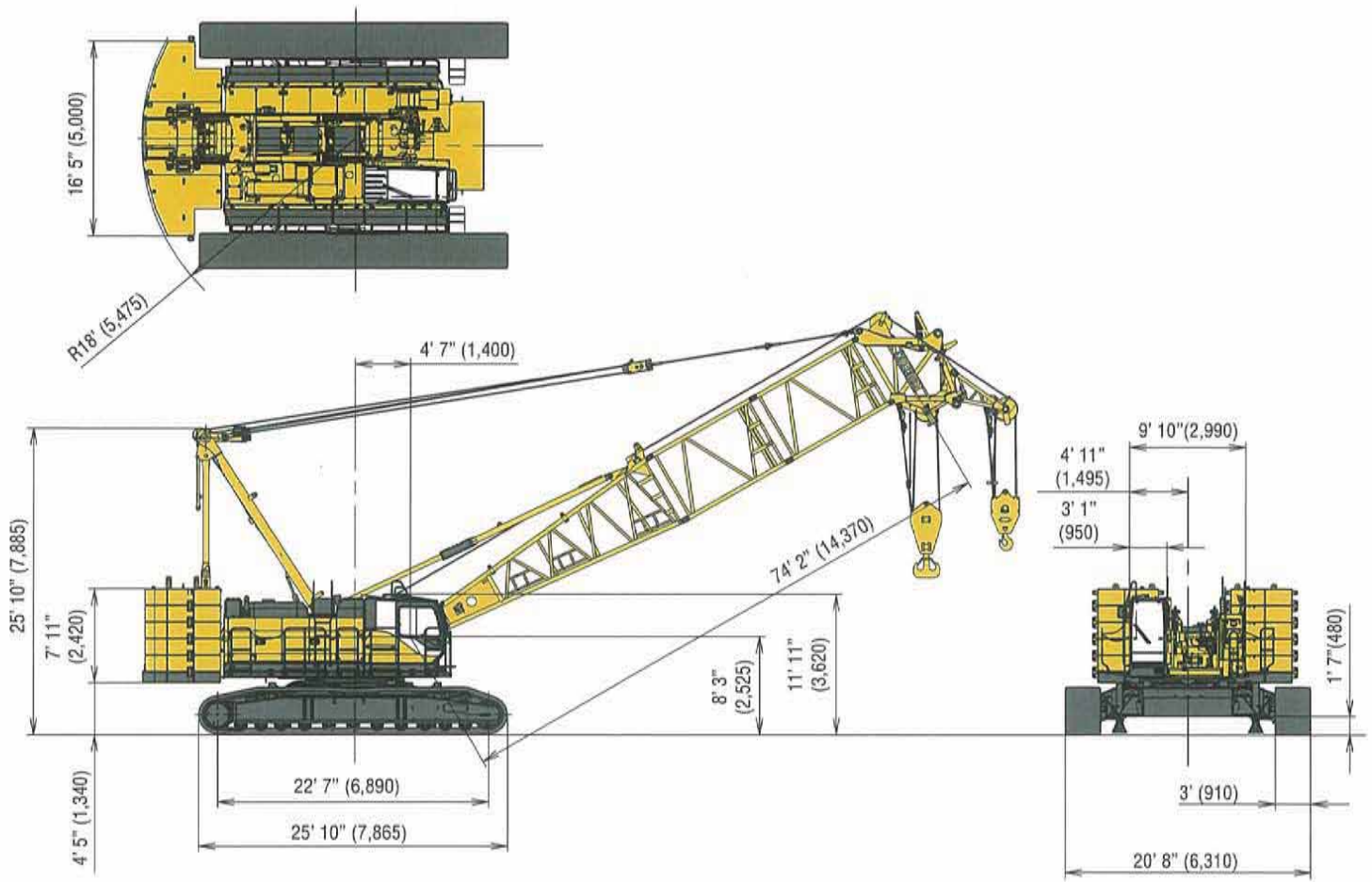
**Weight**

Operating Weight	304,200 lbs (136 t)
Ground Pressure	11.7 psi (106 kPa)
Counterweight	121,300 lbs
Transport Weight	84,193 lbs

# GENERAL DIMENSIONS

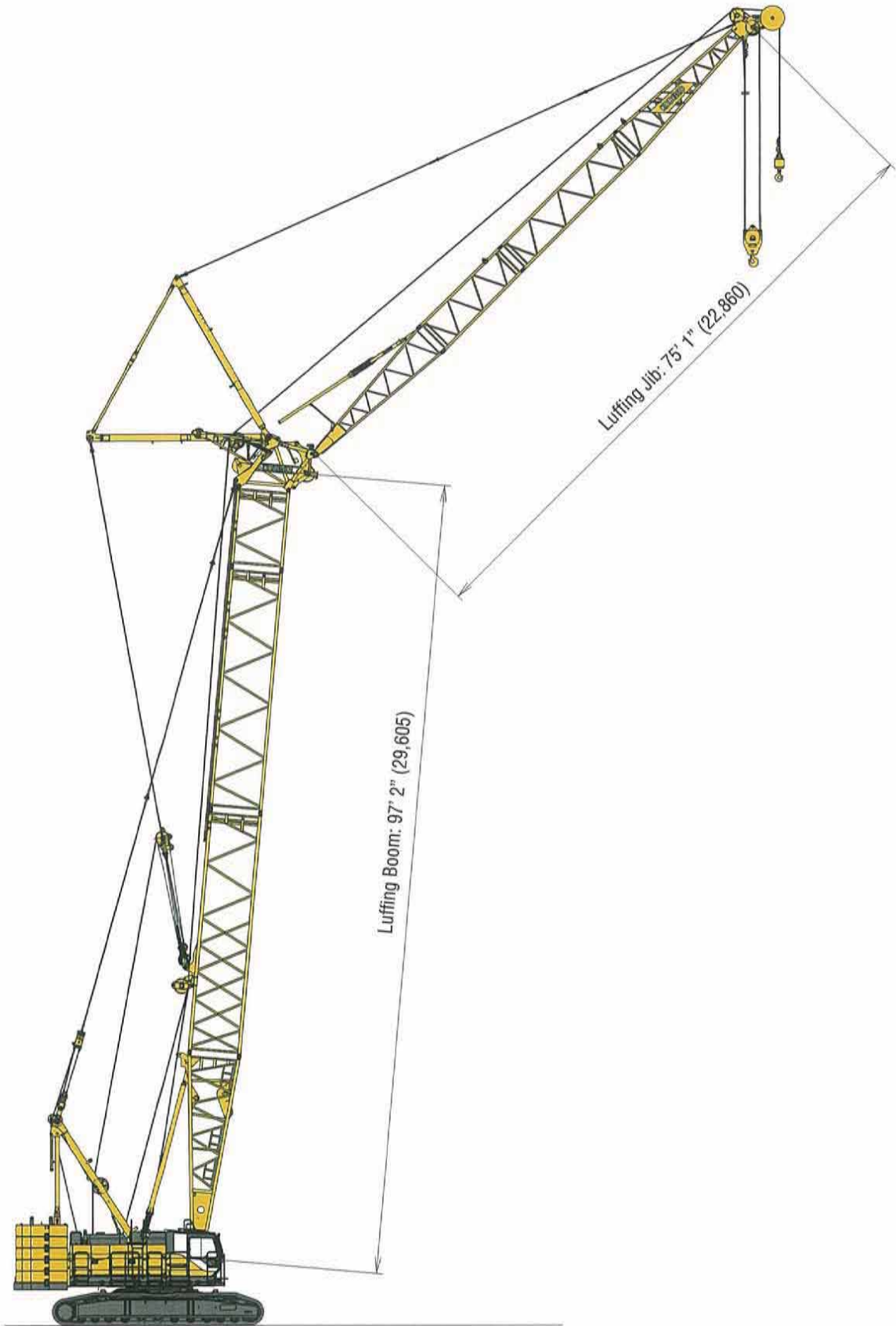
## Crane Boom

Unit: ft-in (mm)



# Luffing Jib

Unit: ft-in (mm)





# BOOM AND JIB ARRANGEMENTS

## Luffing Boom Arrangements for Crane

Boom length ft (m)	Boom arrangement	Boom length ft (m)	Boom arrangement
47 (14.4)		127 (38.8)	※
57 (17.4)	※		
67 (20.5)	※	137 (41.8)	※
77 (23.5)	※		
87 (26.6)	※	147 (44.8)	※
97 (29.6)	※		
107 (32.7)	※	157 (47.9)	※
117 (35.7)	※		
	※		
	※		
	※		

Symbol	Boom Length	Remarks
	25.0 ft (7.6 m)	Boom Base
	2.0 ft (0.7 m)	Luffing Boom Top
	10.0 ft (3.1 m)	Insert Boom
	20.0 ft (6.1 m)	Insert Boom
	40.0 ft (12.2 m)	Insert Boom
	30.0 ft (9.1 m)	Insert Boom

※ indicates the most flexible combination of insert luffing booms, which can be modified to form all shorter luffing boom arrangements.

## Luffing Boom Arrangements for Luffing

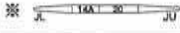

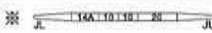

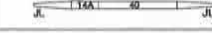


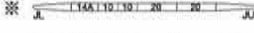





Boom length ft (m)	Boom arrangement
107 (32.7)	※
117 (35.7)	※
127 (38.8)	※
137 (41.8)	※
147 (44.8)	※
157 (47.9)	※
	※

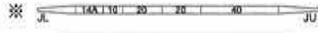

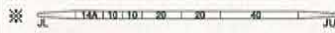



Symbol	Boom Length	Remarks
	25.0 ft (7.6 m)	Boom Base
	2.0 ft (0.7 m)	Luffing Boom Top
	10.0 ft (3.1 m)	Insert Boom
	20.0 ft (6.1 m)	Insert Boom
	40.0 ft (12.2 m)	Insert Boom
	30.0 ft (9.1 m)	Insert Boom for Luffing

※ indicates the most flexible combination of insert luffing booms, which can be modified to form all shorter luffing boom arrangements.



# Luffing Jib Arrangements

Jib length ft (m)	Jib arrangement
75 (22.9)	※ 
85 (25.9)	※ 
95 (29.0)	※ 
	
	
105 (32.0)	※ 
	
115 (35.1)	※ 
	
125 (38.1)	※ 
135 (41.1)	※ 
	
	

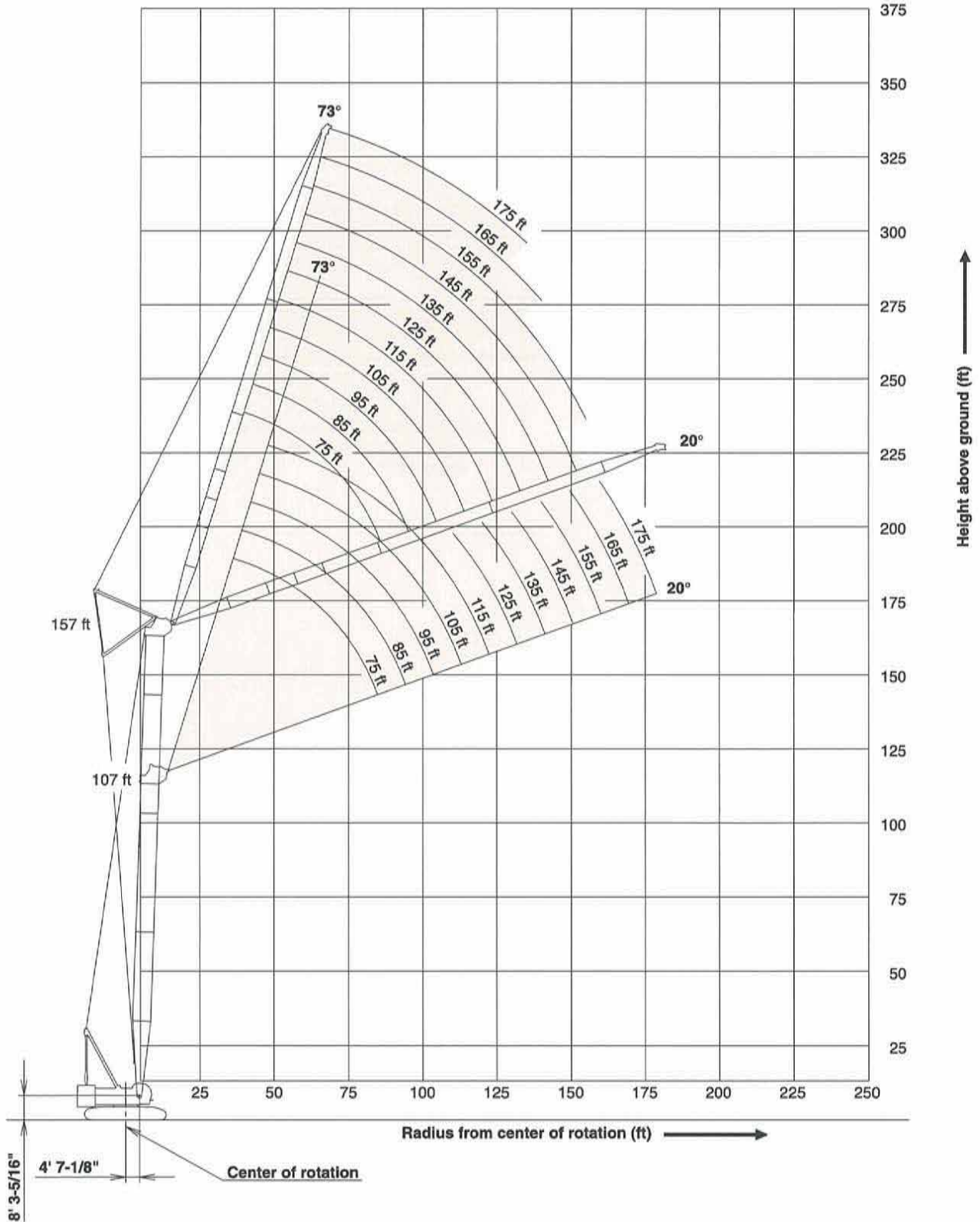
Jib length ft (m)	Jib arrangement
145 (44.2)	※ 
	
155 (47.2)	※ 
	
165 (50.3)	※ 
175 (53.3)	※ 

Symbol	Jib Length	Remarks
	20.0 ft (6.1 m)	Jib Base
	14.0 ft (4.3 m)	Tapered Insert Jib
	10.0 ft (3.1 m)	Luffing Insert Jib
	20.0 ft (6.1 m)	Luffing Insert Jib
	40.0 ft (12.2 m)	Luffing Insert Jib
	21.0 ft (6.4 m)	Jib Top

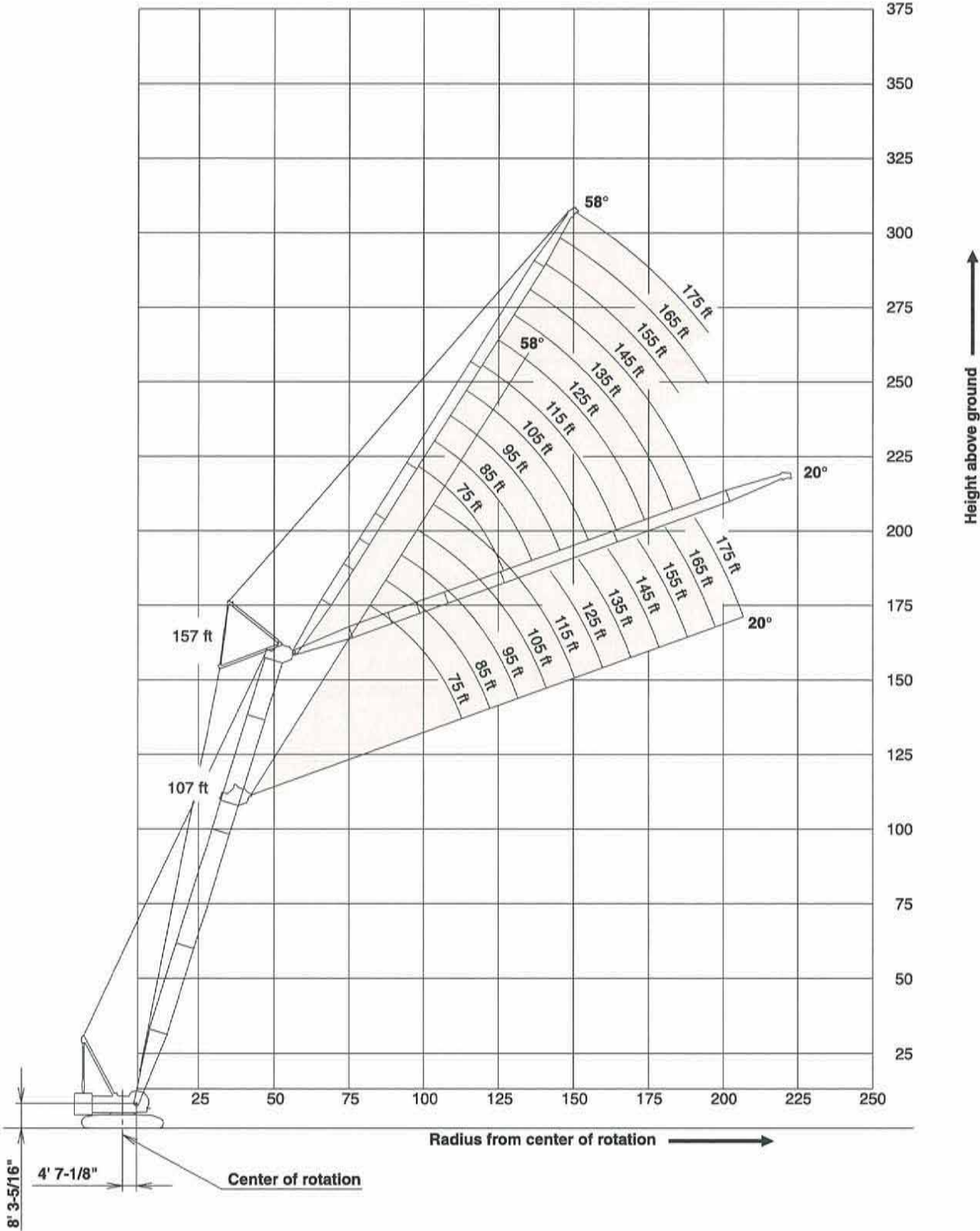
※ indicates the most flexible combination of insert luffing booms, which can be modified to form all shorter luffing boom arrangements.

# WORKING RANGES

## Luffing Jib 88°



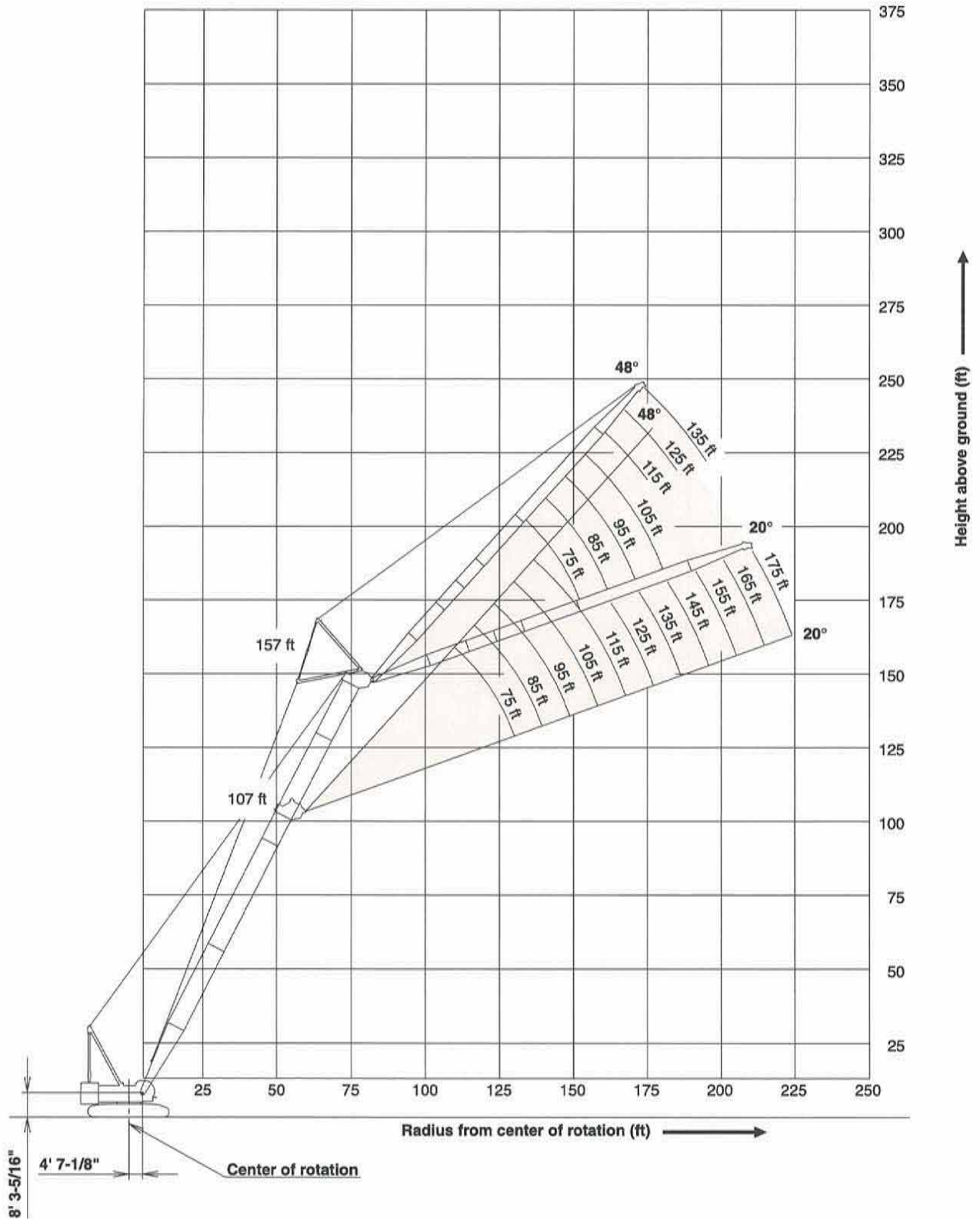
# Luffing Jib 73°





# WORKING RANGES

## Luffing Jib 63°





# SUPPLEMENTAL DATA

## (FOR CRANE WITH LUFFING BOOM TIP)

1. Rated loads included in the charts are the maximum allowable freely suspended loads at a given boom length, boom angle and load radius, and have been determined for the machine standing level on firm supporting surface under ideal operating conditions. The user must limit or de-rate rated loads to allow for adverse conditions (such as soft or uneven ground, out-of-level conditions, wind, side loads, pendulum action, jerking or sudden stopping of loads, inexperience of personnel, multiple machine lifts, and traveling with a load).
2. Capacities do not exceed 75% of minimum tipping loads. Capacities based on factors other than machine stability such as structural competence are shown by asterisk \* in the charts.
3. The machine must be reeved and set-up as stated in the operation manual and all the instruction manuals if these manuals are missing, obtain replacements.
  - Boom backstops are required for all boom lengths.
  - Gantry must be fully raised position for all operations.
  - The crane must be leveled to within 1% on a firm supporting surface.
4. Do not attempt to lift where no radius on load is listed as crane may tip or collapse.
5. Attempting to lift more than rated loads may cause machine to tip or collapse. Do not tip machine to determine capacity.
6. Weight of hooks, hook blocks, slings and other lifting devices are a part of the total load. Their total weight must be subtracted from the rated load to obtain the weight that can be lifted.
7. The total load that can be lifted over boom point with auxiliary sheave is the value for 1,250 lbs deducted from rated load for the boom without auxiliary sheave.
8. The total load that can be lifted over an auxiliary sheave is the value for 1,250 lbs deducted from rated load for the boom without auxiliary sheave, but it should not exceed 59,000 lbs.
9. Least stable position is over the side.
10. Maximum hoist load for number of reeving parts of line for hoist rope.

11. Lifting capacities listed apply only to the machine as originally manufactured and designed by KOBELCO CRANES CO.,LTD. Modifications to this machine or use of equipment other than that specified can reduce operating capacity.
12. Designed and rated to comply with ANSI Code B30.5.

Operation of this equipment in excess of rated loads or disregard of instruction voids the warranty.

### Main Boom Hoist Loads

No. of Parts of Line	1	2	3	4	5	6
Maximum Loads (lbs)	29,500	59,000	88,500	118,000	147,500	170,000

### Auxiliary Hoist Loads

No. of Parts of Line	1	2
Maximum Loads (lbs)	29,500	59,000



# LUFFING JIB SUPPLEMENTAL DATA

1. Rated loads included in the charts are the maximum allowable freely suspended loads at a given boom length, boom angle and load radius, and have been determined for the machine standing level on firm supporting surface under ideal operating conditions. The user must limit or de-rate rated loads to allow for adverse conditions (such as soft or uneven ground, out-of-level conditions, wind, side loads, pendulum action, jerking or sudden stopping of loads, inexperience of personnel, multiple machine lifts, and traveling with a load).

2. Capacities do not exceed 75% of minimum tipping loads. Capacities based on factors other than machine stability such as structural competence are shown by asterisk \* in the charts.

3. The machine must be reeved and set-up as stated in the operation manual and all the instruction manuals if these manuals are missing, obtain replacements.

- Boom backstops are required for all boom lengths.
- Gantry must be fully raised position for all operations.
- The crane must be leveled to within 1% on a firm supporting surface.

4. Do not attempt to lift where no radius on load is listed as crane may tip or collapse.

5. Attempting to lift more than rated loads may cause machine to tip or collapse. Do not tip machine to determine capacity.

6. Weight of hooks, hook blocks, slings and other lifting devices are a part of the total load. Their total weight must be subtracted from the rated load to obtain the weight that can be lifted.

7. The total load that can be lifted over a jib is limited by rated jib loads.

8. The total load that can be lifted over an auxiliary sheave should not exceed 29,500 lbs.

9. Luffing boom and jib combinations.

		Jib Length (ft)													
		75	85	95	105	115	125	135	145	155	165	175			
Boom Length (ft)	107	○	○	○	○	○	○	○	○	○	○	○	○	○	○
	117	○	○	○	○	○	○	○	○	○	○	○	○	○	○
	127	○	○	○	○	○	○	○	○	○	○	○	○	○	○
	137	○	○	○	○	○	○	○	○	○	○	○	○	○	○
	147	○	○	○	○	○	○	○	○	○	○	○	○	○	○
	157	○	○	○	○	○	○	○	○	○	○	○	○	○	○

○: Combinations which is allowed.

10. The boom should be erected over the front of the crawlers, not laterally. When erecting and lowering for all boom and jib combinations, the blocks for erection must be placed at the end of the crawlers.

11. Least stable position is over the side.

12. The boom should be erected over the front of the crawlers, not laterally. The blocks for erection must be placed at the end of the crawlers when erecting and lowering the boom. In the case of nine counterweight, the boom length are 127 ft or over. In the case of eleven counterweight and two car-

bodyweight, the boom length are 147 ft or over.

13. Maximum number of reeving parts of line for hoist rope.

(1) LUFFING JIB

		Jib Length (ft)													
		75	85	95	105	115	125	135	145	155	165	175			
Boom Length (ft)	107	3	3	3	3	2	2	2	2	2	2	2	2	2	2
	117	3	3	3	2	2	2	2	2	2	2	2	2	2	2
	127	3	3	3	2	2	2	2	2	2	2	2	2	2	2
	137	3	3	2	2	2	2	2	2	2	2	2	2	2	2
	147	3	2	2	2	2	2	2	2	2	2	2	2	2	2
	157	3	2	2	2	2	2	2	2	2	2	2	2	2	2

(2) CRANE BOOM WITH LUFFING JIB ATTACHED

NINE COUNTERWEIGHTS (105,820 lbs)

		Jib Length (ft)													
		75	85	95	105	115	125	135	145	155	165	175			
Boom Length (ft)	107	4	4	4	4	4	3	3	3	3	3	3	3	3	3
	117	4	4	4	4	3	3	3	3	3	3	3	3	3	3
	127	4	3	3	3	3	3	3	3	3	2	2	2	2	2
	137	3	3	3	3	3	3	3	2	2	2	2	2	2	2
	147	3	3	3	3	3	2	2	2	2	2	2	2	2	2
	157	3	3	3	2	2	2	2	2	2	2	2	2	2	2

ELEVEN COUNTERWEIGHTS (116,840 lbs)

+ TWO LOW. WEIGHTS (22,050 lbs)

		Jib Length (ft)													
		75	85	95	105	115	125	135	145	155	165	175			
Boom Length (ft)	107	4	4	4	4	4	4	3	3	3	3	3	3	3	3
	117	4	4	4	4	4	4	3	3	3	3	3	3	3	3
	127	4	4	4	3	3	3	3	3	3	3	3	3	3	3
	137	3	3	3	3	3	3	3	3	3	3	2	2	2	2
	147	3	3	3	3	3	3	3	3	2	2	2	2	2	2
	157	3	3	3	3	2	2	2	2	2	2	2	2	2	2

14. Maximum hoist load for number of reeving parts of line for hoist rope.

**Main Hoist Loads**

No. of Parts of Line	1	2	3	4
Maximum Loads (lbs)	29,500	59,000	88,500	118,000

**Jib Hoist Loads**

No. of Parts of Line	1	2	3
Maximum Loads (lbs)	29,500	59,000	79,000

**Auxiliary Hoist Loads**

No. of Parts of Line	1
Maximum Loads (lbs)	29,500

15. The total load that can be lifted over an luffing jib with main hook block is the value for 4,000 lbs deducted from rated load for the luffing jib without main hook block.

16. Lifting capacities listed apply only to the machine as originally manufactured and designed by KOBELCO CRANES CO.,LTD.

Modifications to this machine or use of equipment other than that specified can reduce operating capacity.

17. Designed and rated to comply with ANSI Code B30.5.

Operation of this equipment in excess of rated loads or disregard of instruction voids the warranty.



# LIFTING CAPACITY



## Luffing Boom Lifting Capacity

Unit: lbs

Counterweight: 121,300 lbs, Carbody weight: 23,810 lbs

47' Boom			57' Boom			67' Boom			77' Boom		
Load Radius (ft)	Boom Angle (deg.)	360° Rated Load (lbs)	Load Radius (ft)	Boom Angle (deg.)	360° Rated Load (lbs)	Load Radius (ft)	Boom Angle (deg.)	360° Rated Load (lbs)	Load Radius (ft)	Boom Angle (deg.)	360° Rated Load (lbs)
18.0	79.7	170,000 *	20.0	79.5	170,000 *	22.0	79.3	170,000 *	24.0	79.2	170,000 *
<b>19.0</b>	<b>78.5</b>	<b>170,000 *</b>	<b>22.0</b>	<b>77.4</b>	<b>170,000 *</b>	<b>24.0</b>	<b>77.6</b>	<b>170,000 *</b>	<b>26.0</b>	<b>77.7</b>	<b>170,000 *</b>
20.0	77.2	170,000 *	24.0	75.3	170,000 *	26.0	75.8	170,000 *	28.0	76.1	156,900 *
<b>22.0</b>	<b>74.6</b>	<b>170,000 *</b>	<b>26.0</b>	<b>73.2</b>	<b>170,000 *</b>	<b>28.0</b>	<b>74.0</b>	<b>160,400 *</b>	<b>30.0</b>	<b>74.6</b>	<b>144,600 *</b>
24.0	72.0	170,000 *	28.0	71.0	165,100 *	30.0	72.2	146,600	32.0	73.0	132,900
<b>26.0</b>	<b>69.3</b>	<b>170,000 *</b>	<b>30.0</b>	<b>68.8</b>	<b>148,800</b>	<b>32.0</b>	<b>70.3</b>	<b>132,900</b>	<b>34.0</b>	<b>71.4</b>	<b>121,600</b>
28.0	66.6	162,900 *	32.0	66.5	135,100	34.0	68.4	121,600	36.0	69.8	111,900
<b>30.0</b>	<b>63.8</b>	<b>147,200</b>	<b>34.0</b>	<b>64.2</b>	<b>123,800</b>	<b>36.0</b>	<b>66.5</b>	<b>111,900</b>	<b>38.0</b>	<b>68.2</b>	<b>103,600</b>
32.0	60.8	133,800	36.0	61.9	114,100	38.0	64.6	103,800	40.0	66.5	96,300
<b>34.0</b>	<b>57.8</b>	<b>122,500</b>	<b>38.0</b>	<b>59.5</b>	<b>106,000</b>	<b>40.0</b>	<b>62.6</b>	<b>96,500</b>	<b>45.0</b>	<b>62.3</b>	<b>81,700</b>
36.0	54.7	112,800	40.0	57.0	98,700	45.0	57.4	82,000	50.0	57.8	70,900
<b>38.0</b>	<b>51.4</b>	<b>103,800 *</b>	<b>45.0</b>	<b>50.3</b>	<b>84,200</b>	<b>50.0</b>	<b>51.9</b>	<b>70,900</b>	<b>55.0</b>	<b>53.1</b>	<b>62,300</b>
40.0	47.8	95,200 *	50.0	42.7	72,900 *	55.0	45.9	62,600	60.0	48.0	55,500
<b>45.0</b>	<b>37.7</b>	<b>75,800 *</b>	<b>55.0</b>	<b>33.6</b>	<b>60,100 *</b>	<b>60.0</b>	<b>38.9</b>	<b>55,500 *</b>	<b>65.0</b>	<b>42.4</b>	<b>49,800</b>
						65.0	30.5	46,200 *	70.0	36.0	44,900 *
Reeves		6	Reeves		6	Reeves		6	Reeves		6
87' Boom			97' Boom			107' Boom			117' Boom		
Load Radius (ft)	Boom Angle (deg.)	360° Rated Load (lbs)	Load Radius (ft)	Boom Angle (deg.)	360° Rated Load (lbs)	Load Radius (ft)	Boom Angle (deg.)	360° Rated Load (lbs)	Load Radius (ft)	Boom Angle (deg.)	360° Rated Load (lbs)
26.0	79.1	167,700 *	28.0	79.1	149,600 *	30.0	79.0	135,800 *	30.0	80.0	133,100 *
<b>28.0</b>	<b>77.8</b>	<b>153,400 *</b>	<b>30.0</b>	<b>77.9</b>	<b>138,000 *</b>	<b>32.0</b>	<b>77.9</b>	<b>125,600 *</b>	<b>32.0</b>	<b>79.0</b>	<b>123,400 *</b>
30.0	76.4	141,300 *	32.0	76.6	127,800 *	34.0	76.8	117,000 *	34.0	78.0	114,800 *
<b>32.0</b>	<b>75.0</b>	<b>131,100 *</b>	<b>34.0</b>	<b>75.4</b>	<b>119,200 *</b>	<b>36.0</b>	<b>75.7</b>	<b>109,500 *</b>	<b>36.0</b>	<b>76.9</b>	<b>107,300 *</b>
34.0	73.7	121,400	36.0	74.2	111,300	38.0	74.6	102,500	38.0	75.9	100,900 *
<b>36.0</b>	<b>72.3</b>	<b>111,700</b>	<b>38.0</b>	<b>72.9</b>	<b>102,900</b>	<b>40.0</b>	<b>73.4</b>	<b>95,200</b>	<b>40.0</b>	<b>74.9</b>	<b>95,000 *</b>
38.0	70.8	103,300	40.0	71.6	95,600	45.0	70.6	80,600	45.0	72.3	80,400
<b>40.0</b>	<b>69.4</b>	<b>96,300</b>	<b>45.0</b>	<b>68.5</b>	<b>81,100</b>	<b>50.0</b>	<b>67.7</b>	<b>69,600</b>	<b>50.0</b>	<b>69.7</b>	<b>69,400</b>
45.0	65.8	81,700	50.0	65.2	70,100	55.0	64.7	61,000	55.0	67.0	60,800
<b>50.0</b>	<b>62.0</b>	<b>70,700</b>	<b>55.0</b>	<b>61.8</b>	<b>61,500</b>	<b>60.0</b>	<b>61.6</b>	<b>54,200</b>	<b>60.0</b>	<b>64.3</b>	<b>54,000</b>
55.0	58.1	62,100	60.0	58.3	54,600	65.0	58.4	48,500	65.0	61.5	48,200
<b>60.0</b>	<b>53.9</b>	<b>55,300</b>	<b>65.0</b>	<b>54.6</b>	<b>48,900</b>	<b>70.0</b>	<b>55.1</b>	<b>43,800</b>	<b>70.0</b>	<b>58.6</b>	<b>43,600</b>
65.0	49.5	49,600	70.0	50.7	44,300	75.0	51.7	39,600	75.0	55.6	39,400
<b>70.0</b>	<b>44.8</b>	<b>44,900</b>	<b>75.0</b>	<b>46.6</b>	<b>40,300</b>	<b>80.0</b>	<b>48.0</b>	<b>36,300</b>	<b>80.0</b>	<b>52.5</b>	<b>36,100</b>
75.0	39.6	41,000	80.0	42.2	36,800	85.0	44.2	33,200	85.0	49.2	33,000
<b>80.0</b>	<b>33.6</b>	<b>37,200 *</b>	<b>85.0</b>	<b>37.2</b>	<b>33,900</b>	<b>90.0</b>	<b>39.9</b>	<b>30,800</b>	<b>90.0</b>	<b>45.7</b>	<b>30,600</b>
			90.0	31.6	30,600 *	95.0	35.3	28,400	95.0	42.0	28,200
									<b>100.0</b>	<b>38.0</b>	<b>26,200</b>
									105.0	33.6	24,400 *
Reeves		6	Reeves		6	Reeves		5	Reeves		5

Note: Designed and rated to comply with ANSI Code B30.5.

Capacities based on factors other than machine stability such as structural competence are shown by asterisk \* in the charts.

Refer to notes P13 and P14.



# Luffing Boom Lifting Capacity

Unit: lbs

Counterweight: 121,300 lbs, Carbody weight: 23,810 lbs

127' Boom			137' Boom			147' Boom			157' Boom		
Load Radius (ft)	Boom Angle (deg.)	360° Rated Load (lbs)	Load Radius (ft)	Boom Angle (deg.)	360° Rated Load (lbs)	Load Radius (ft)	Boom Angle (deg.)	360° Rated Load (lbs)	Load Radius (ft)	Boom Angle (deg.)	360° Rated Load (lbs)
32.0	79.9	120,800 *	34.0	79.7	110,600 *	36.0	79.7	102,500 *	38.0	79.6	94,700 *
<b>34.0</b>	<b>78.9</b>	<b>112,400 *</b>	<b>36.0</b>	<b>78.9</b>	<b>103,300 *</b>	<b>38.0</b>	<b>78.9</b>	<b>96,100 *</b>	<b>40.0</b>	<b>78.8</b>	<b>89,000 *</b>
36.0	78.0	105,100 *	38.0	78.0	97,000 *	40.0	78.1	90,300 *	45.0	77.0	77,300 *
<b>38.0</b>	<b>77.1</b>	<b>98,700 *</b>	<b>40.0</b>	<b>77.2</b>	<b>91,200 *</b>	<b>45.0</b>	<b>76.0</b>	<b>78,700 *</b>	<b>50.0</b>	<b>75.1</b>	<b>68,300 *</b>
40.0	76.1	93,000 *	45.0	75.0	79,500 *	50.0	74.0	68,700	55.0	73.2	59,700
<b>45.0</b>	<b>73.8</b>	<b>80,000</b>	<b>50.0</b>	<b>72.8</b>	<b>68,700</b>	<b>55.0</b>	<b>72.0</b>	<b>60,100</b>	<b>60.0</b>	<b>71.2</b>	<b>52,900</b>
50.0	71.4	69,000	55.0	70.6	60,100	60.0	69.9	53,100	65.0	69.3	47,100
<b>55.0</b>	<b>69.0</b>	<b>60,400</b>	<b>60.0</b>	<b>68.3</b>	<b>53,100</b>	<b>65.0</b>	<b>67.8</b>	<b>47,300</b>	<b>70.0</b>	<b>67.3</b>	<b>42,300</b>
60.0	66.5	53,300	65.0	66.0	47,600	70.0	65.6	42,700	75.0	65.2	38,300
<b>65.0</b>	<b>63.9</b>	<b>47,800</b>	<b>70.0</b>	<b>63.7</b>	<b>42,700</b>	<b>75.0</b>	<b>63.4</b>	<b>38,500</b>	<b>80.0</b>	<b>63.2</b>	<b>34,800</b>
70.0	61.4	42,900	75.0	61.3	38,800	80.0	61.2	35,200	85.0	61.1	31,900
<b>75.0</b>	<b>58.7</b>	<b>39,000</b>	<b>80.0</b>	<b>58.8</b>	<b>35,200</b>	<b>85.0</b>	<b>58.9</b>	<b>32,100</b>	<b>90.0</b>	<b>58.9</b>	<b>29,300</b>
80.0	55.9	35,400	85.0	56.3	32,400	90.0	56.5	29,500	95.0	56.8	26,800
<b>85.0</b>	<b>53.1</b>	<b>32,600</b>	<b>90.0</b>	<b>53.6</b>	<b>29,700</b>	<b>95.0</b>	<b>54.1</b>	<b>27,300</b>	<b>100.0</b>	<b>54.5</b>	<b>24,900</b>
90.0	50.1	29,900	95.0	50.9	27,300	100.0	51.6	25,100	105.0	52.2	23,100
<b>95.0</b>	<b>47.0</b>	<b>27,500</b>	<b>100.0</b>	<b>48.1</b>	<b>25,300</b>	<b>105.0</b>	<b>49.0</b>	<b>23,300</b>	<b>110.0</b>	<b>49.8</b>	<b>21,300</b>
100.0	43.7	25,500	105.0	45.1	23,500	110.0	46.3	21,600	115.0	47.2	19,800
<b>105.0</b>	<b>40.2</b>	<b>23,800</b>	<b>110.0</b>	<b>41.9</b>	<b>21,800</b>	<b>115.0</b>	<b>43.4</b>	<b>20,200</b>	<b>120.0</b>	<b>44.6</b>	<b>18,500</b>
110.0	36.4	22,000	115.0	38.6	20,500	120.0	40.4	18,900	125.0	41.9	17,400
<b>115.0</b>	<b>32.1</b>	<b>20,200 *</b>	<b>120.0</b>	<b>34.9</b>	<b>18,900</b>	<b>125.0</b>	<b>37.1</b>	<b>17,600</b>	<b>130.0</b>	<b>38.9</b>	<b>16,000</b>
			125.0	30.8	16,900 *	130.0	33.6	16,000 *	135.0	35.8	15,200 *
									<b>140.0</b>	<b>32.4</b>	<b>13,400 *</b>
<b>Reeves</b>		<b>5</b>	<b>Reeves</b>		<b>4</b>	<b>Reeves</b>		<b>4</b>	<b>Reeves</b>		<b>4</b>

Note: Designed and rated to comply with ANSI Code B30.5.

Capacities based on factors other than machine stability such as structural competence are shown by asterisk \* in the charts.

Refer to notes P13 and P14.



# LIFTING CAPACITY



## Luffing Boom With Luffing Jib Lifting Capacity

Unit: lbs

Counterweight: 121,300 lbs, Carbody weight: 23,810 lbs

107' Boom												
Load Radius (ft)	Boom Angle (deg.)	Jib Length (ft)										
		75	85	95	105	115	125	135	145	155	165	175
30.0	79.0	109,100*	105,800*	102,000*	98,800*	95,500*	91,100*	87,400*	83,700*	78,900*	74,700*	70,400*
<b>32.0</b>	<b>77.9</b>	<b>99,700*</b>	<b>96,300*</b>	<b>92,800*</b>	<b>89,600*</b>	<b>86,500*</b>	<b>82,400*</b>	<b>78,800*</b>	<b>75,100*</b>	<b>70,600*</b>	<b>66,500*</b>	<b>62,300*</b>
34.0	76.8	91,500	88,300	84,800	81,800	78,800	74,900	71,400	67,800	63,400	59,500	55,400
<b>36.0</b>	<b>75.7</b>	<b>84,300</b>	<b>81,200</b>	<b>77,800</b>	<b>74,900</b>	<b>71,900</b>	<b>68,200</b>	<b>64,700</b>	<b>61,300</b>	<b>57,100</b>	<b>53,400</b>	<b>49,400</b>
38.0	74.6	77,000	74,100	70,700	68,000	65,100	61,400	58,100	54,900	50,800	47,200	43,300
<b>40.0</b>	<b>73.4</b>	<b>70,300</b>	<b>67,400</b>	<b>64,200</b>	<b>61,500</b>	<b>58,700</b>	<b>55,200</b>	<b>51,900</b>	<b>48,800</b>	<b>44,900</b>	<b>41,400</b>	<b>37,700</b>
45.0	70.6	56,500	53,700	50,700	48,100	45,400	42,100	39,100	36,200	32,500	29,100	25,800
<b>50.0</b>	<b>67.7</b>	<b>46,000</b>	<b>43,300</b>	<b>40,600</b>	<b>38,100</b>	<b>35,600</b>	<b>32,400</b>	<b>29,700</b>	<b>26,800</b>	<b>23,200</b>	<b>20,100</b>	<b>17,000</b>
55.0	64.7	37,600	35,000	32,300	30,000	27,600	24,600	22,000	19,200	15,800		
<b>60.0</b>	<b>61.6</b>	<b>30,700</b>	<b>28,300</b>	<b>25,600</b>	<b>23,400</b>	<b>21,000</b>	<b>18,200</b>					
65.0	58.4	25,300	22,900	20,400	18,200	16,000	13,100					
<b>70.0</b>	<b>55.1</b>	<b>21,000</b>	<b>18,500</b>	<b>16,100</b>	<b>14,100</b>							
75.0	51.7	17,200	14,900									
<b>80.0</b>	<b>48.0</b>	<b>14,000</b>										
85.0	44.2	11,100										
<b>Reeves</b>		<b>4</b>	<b>4</b>	<b>4</b>	<b>4</b>	<b>4</b>	<b>4</b>	<b>3</b>	<b>3</b>	<b>3</b>	<b>3</b>	<b>3</b>

117' Boom												
Load Radius (ft)	Boom Angle (deg.)	Jib Length (ft)										
		75	85	95	105	115	125	135	145	155	165	175
30.0	80.0	106,200*	102,700*	99,200*	95,900*	92,600*	88,600*	84,900*	81,200*	76,500*	72,400*	68,000*
<b>32.0</b>	<b>79.0</b>	<b>97,300*</b>	<b>93,900*</b>	<b>90,400*</b>	<b>87,400*</b>	<b>84,200*</b>	<b>80,300*</b>	<b>76,700*</b>	<b>73,100*</b>	<b>68,600*</b>	<b>64,800*</b>	<b>60,500*</b>
34.0	78.0	89,600*	86,400*	83,000*	80,100*	77,100*	73,200*	69,800*	66,300*	62,000*	58,300*	54,200*
<b>36.0</b>	<b>76.9</b>	<b>82,900*</b>	<b>79,800*</b>	<b>76,500*</b>	<b>73,800*</b>	<b>70,800*</b>	<b>67,000*</b>	<b>63,700*</b>	<b>60,400*</b>	<b>56,200*</b>	<b>52,600*</b>	<b>48,700*</b>
38.0	75.9	76,200*	73,200*	70,100*	67,400*	64,500*	60,800*	57,700*	54,500*	50,400*	46,900*	43,200*
<b>40.0</b>	<b>74.9</b>	<b>69,900</b>	<b>67,000</b>	<b>64,000</b>	<b>61,400</b>	<b>58,500</b>	<b>55,000</b>	<b>52,000</b>	<b>48,900</b>	<b>44,900</b>	<b>41,500</b>	<b>38,000</b>
45.0	72.3	56,500	53,600	50,700	48,200	45,600	42,400	39,500	36,600	32,800	29,700	26,400
<b>50.0</b>	<b>69.7</b>	<b>46,000</b>	<b>43,400</b>	<b>40,600</b>	<b>38,300</b>	<b>35,800</b>	<b>32,700</b>	<b>30,000</b>	<b>27,200</b>	<b>23,800</b>	<b>20,700</b>	<b>17,500</b>
55.0	67.0	37,600	35,100	32,300	30,200	27,800	24,800	22,200	19,600	16,400		
<b>60.0</b>	<b>64.3</b>	<b>30,700</b>	<b>28,300</b>	<b>25,600</b>	<b>23,700</b>	<b>21,300</b>	<b>18,400</b>					
65.0	61.5	25,300	22,900	20,400	18,400	16,200	13,600					
<b>70.0</b>	<b>58.6</b>	<b>20,800</b>	<b>18,500</b>	<b>16,100</b>	<b>14,100</b>							
75.0	55.6	17,100	14,900									
<b>80.0</b>	<b>52.5</b>	<b>14,000</b>										
85.0	49.2	11,100										
<b>Reeves</b>		<b>4</b>	<b>4</b>	<b>4</b>	<b>4</b>	<b>4</b>	<b>4</b>	<b>3</b>	<b>3</b>	<b>3</b>	<b>3</b>	<b>3</b>

127' Boom												
Load Radius (ft)	Boom Angle (deg.)	Jib Length (ft)										
		75	85	95	105	115	125	135	145	155	165	175
32.0	79.9	95,400*	92,100*	88,600*	85,500*	82,500*	78,500*	75,200*	71,500*	67,300*	63,400*	59,200*
<b>34.0</b>	<b>78.9</b>	<b>87,300*</b>	<b>84,300*</b>	<b>81,000*</b>	<b>78,000*</b>	<b>75,000*</b>	<b>71,300*</b>	<b>67,800*</b>	<b>64,400*</b>	<b>60,300*</b>	<b>56,600*</b>	<b>52,700*</b>
36.0	78.0	80,700*	77,700*	74,500*	71,700*	68,800*	65,100*	61,800*	58,500*	54,500*	50,900*	47,200*
<b>38.0</b>	<b>77.1</b>	<b>74,100*</b>	<b>71,200*</b>	<b>68,100*</b>	<b>65,300*</b>	<b>62,600*</b>	<b>59,000*</b>	<b>55,900*</b>	<b>52,700*</b>	<b>48,800*</b>	<b>45,300*</b>	<b>41,600*</b>
40.0	76.1	68,100	65,200	62,200	59,500	56,900	53,400	50,400	47,300	43,600	40,100	36,600
<b>45.0</b>	<b>73.8</b>	<b>55,800</b>	<b>53,100</b>	<b>50,200</b>	<b>47,800</b>	<b>45,300</b>	<b>42,000</b>	<b>39,300</b>	<b>36,400</b>	<b>32,800</b>	<b>29,700</b>	<b>26,300</b>
50.0	71.4	45,600	42,900	40,200	37,900	35,500	32,500	29,800	27,100	23,700	20,800	17,700
<b>55.0</b>	<b>69.0</b>	<b>37,200</b>	<b>34,600</b>	<b>32,100</b>	<b>29,900</b>	<b>27,500</b>	<b>24,700</b>	<b>22,100</b>	<b>19,500</b>	<b>16,200</b>		
60.0	66.5	30,500	28,000	25,600	23,400	21,200	18,400					
<b>65.0</b>	<b>63.9</b>	<b>25,100</b>	<b>22,700</b>	<b>20,200</b>	<b>18,200</b>	<b>16,000</b>	<b>13,400</b>					
70.0	61.4	20,600	18,300	15,900	14,100							
<b>75.0</b>	<b>58.7</b>	<b>16,700</b>	<b>14,600</b>									
<b>Reeves</b>		<b>4</b>	<b>4</b>	<b>4</b>	<b>3</b>	<b>3</b>	<b>3</b>	<b>3</b>	<b>3</b>	<b>3</b>	<b>3</b>	<b>3</b>

Note: Designed and rated to comply with ANSI Code B30.5.

Capacities based on factors other than machine stability such as structural competence are shown by asterisk \* in the charts.

Refer to notes P13 and P14.





# Luffing Boom With Luffing Jib Lifting Capacity

Unit: lbs

Counterweight: 121,300 lbs, Carbody weight: 23,810 lbs

## 137' Boom

Load Radius (ft)	Boom Angle (deg.)	Jib Length (ft)										
		75	85	95	105	115	125	135	145	155	165	175
34.0	79.7	85,500*	82,300*	79,000*	76,100*	73,300*	69,600*	66,300*	62,800*	58,700*	54,900*	51,200*
<b>36.0</b>	<b>78.9</b>	<b>79,100*</b>	<b>76,000*</b>	<b>72,800*</b>	<b>70,000*</b>	<b>67,200*</b>	<b>63,700*</b>	<b>60,500*</b>	<b>57,100*</b>	<b>53,100*</b>	<b>49,600*</b>	<b>45,900*</b>
38.0	78.0	72,700*	69,700*	66,600*	63,900*	61,200*	57,800*	54,600*	51,500*	47,600*	44,200*	40,600*
<b>40.0</b>	<b>77.2</b>	<b>66,900</b>	<b>64,000</b>	<b>61,000</b>	<b>58,400</b>	<b>55,700</b>	<b>52,400</b>	<b>49,400</b>	<b>46,300</b>	<b>42,600</b>	<b>39,300</b>	<b>35,800</b>
45.0	75.0	55,600	52,900	50,000	47,800	45,100	42,000	39,300	36,400	32,900	29,700	26,600
<b>50.0</b>	<b>72.8</b>	<b>45,600</b>	<b>42,900</b>	<b>40,200</b>	<b>38,000</b>	<b>35,600</b>	<b>32,600</b>	<b>30,000</b>	<b>27,300</b>	<b>23,900</b>	<b>21,100</b>	<b>18,000</b>
55.0	70.6	37,200	34,600	32,100	29,900	27,700	24,700	22,300	19,800	16,500		
<b>60.0</b>	<b>68.3</b>	<b>30,400</b>	<b>28,000</b>	<b>25,600</b>	<b>23,400</b>	<b>21,300</b>	<b>18,600</b>	<b>16,200</b>				
65.0	66.0	24,900	22,700	20,200	18,200	16,200	13,600	11,200				
<b>70.0</b>	<b>63.7</b>	<b>20,500</b>	<b>18,300</b>	<b>15,900</b>	<b>14,100</b>							
75.0	61.3	16,700	14,500									
<b>Reeves</b>		<b>3</b>	<b>3</b>	<b>3</b>	<b>3</b>	<b>3</b>	<b>3</b>	<b>3</b>	<b>3</b>	<b>2</b>	<b>2</b>	<b>2</b>

## 147' Boom

Load Radius (ft)	Boom Angle (deg.)	Jib Length (ft)										
		75	85	95	105	115	125	135	145	155	165	175
36.0	79.7	77,500*	74,700*	71,400*	68,800*	66,000*	62,300*	59,300*	56,000*	52,100*	48,600*	44,900*
<b>38.0</b>	<b>78.9</b>	<b>71,500*</b>	<b>68,800*</b>	<b>65,600*</b>	<b>63,000*</b>	<b>60,300*</b>	<b>56,800*</b>	<b>53,900*</b>	<b>50,700*</b>	<b>46,900*</b>	<b>43,500*</b>	<b>39,900*</b>
40.0	78.1	66,000*	63,400*	60,300*	57,700*	55,100*	51,800*	48,900*	45,900*	42,200*	38,900*	35,400*
<b>45.0</b>	<b>76.0</b>	<b>55,100*</b>	<b>52,500*</b>	<b>49,600*</b>	<b>47,300*</b>	<b>44,800*</b>	<b>41,500*</b>	<b>38,900*</b>	<b>36,200*</b>	<b>32,600*</b>	<b>29,700*</b>	<b>26,300*</b>
50.0	74.0	45,400	42,900	40,200	38,000	35,700	32,700	30,200	27,500	24,100	21,400	18,400
<b>55.0</b>	<b>72.0</b>	<b>37,100</b>	<b>34,800</b>	<b>32,100</b>	<b>30,000</b>	<b>27,800</b>	<b>25,000</b>	<b>22,600</b>	<b>20,000</b>	<b>16,900</b>		
60.0	69.9	30,200	28,000	25,400	23,400	21,300	18,600	16,200				
<b>65.0</b>	<b>67.8</b>	<b>24,900</b>	<b>22,700</b>	<b>20,200</b>	<b>18,200</b>	<b>16,200</b>	<b>13,600</b>	<b>11,400</b>				
70.0	65.6	20,400	18,200	15,900	13,900							
<b>75.0</b>	<b>63.4</b>	<b>16,500</b>	<b>14,400</b>									
<b>Reeves</b>		<b>3</b>	<b>3</b>	<b>3</b>	<b>3</b>	<b>3</b>	<b>3</b>	<b>3</b>	<b>2</b>	<b>2</b>	<b>2</b>	<b>2</b>

## 157' Boom

Load Radius (ft)	Boom Angle (deg.)	Jib Length (ft)										
		75	85	95	105	115	125	135	145	155	165	175
38.0	79.6	69,900*	67,000*	64,000*	61,400*	58,600*	55,300*	52,300*	49,200*	45,400*	42,200*	38,700*
<b>40.0</b>	<b>78.8</b>	<b>64,900*</b>	<b>62,100*</b>	<b>59,200*</b>	<b>56,600*</b>	<b>54,000*</b>	<b>50,700*</b>	<b>47,800*</b>	<b>44,800*</b>	<b>41,100*</b>	<b>38,000*</b>	<b>34,500*</b>
45.0	77.0	53,800*	51,100*	48,500*	46,000*	43,600*	40,600*	37,800*	35,100*	31,700*	28,600*	25,500*
<b>50.0</b>	<b>75.1</b>	<b>44,800</b>	<b>42,300</b>	<b>39,800</b>	<b>37,500</b>	<b>35,200</b>	<b>32,300</b>	<b>29,700</b>	<b>27,100</b>	<b>23,900</b>	<b>21,100</b>	<b>18,200</b>
55.0	73.2	36,900	34,600	32,100	30,000	27,800	25,000	22,600	20,100	17,000		
<b>60.0</b>	<b>71.2</b>	<b>30,000</b>	<b>27,800</b>	<b>25,400</b>	<b>23,400</b>	<b>21,300</b>	<b>18,600</b>	<b>16,200</b>				
65.0	69.3	24,600	22,400	20,000	18,200	16,200	13,600	11,400				
<b>70.0</b>	<b>67.3</b>	<b>20,200</b>	<b>18,100</b>	<b>15,800</b>	<b>13,900</b>							
75.0	65.2	16,300	14,300									
<b>Reeves</b>		<b>3</b>	<b>3</b>	<b>3</b>	<b>3</b>	<b>3</b>	<b>2</b>	<b>2</b>	<b>2</b>	<b>2</b>	<b>2</b>	<b>2</b>

Note: Designed and rated to comply with ANSI Code B30.5.

Capacities based on factors other than machine stability such as structural competence are shown by asterisk \* in the charts.

Refer to notes P13 and P14.



# LIFTING CAPACITY

## Luffing Jib Lifting Capacity

Unit: lbs

Counterweight: 121,300 lbs, Carbody weight: 23,810 lbs

### 107' Boom

Load Radius (ft)	75 ft Jib						85 ft Jib						95 ft Jib						Load Radius (ft)	
	Boom Angle (deg.)						Boom Angle (deg.)						Boom Angle (deg.)							
	88	83	78	73	68	63	88	83	78	73	68	63	88	83	78	73	68	63		
40	79,000*																			40
45	72,000*																			45
50	65,000*																			50
55	59,000*						66,000*						66,000*							55
60	52,200*	57,200					52,900*	56,700					52,900*							60
65	45,400*	51,500					46,200*	51,400					46,500*							65
70	39,900*	46,800*	44,200				40,700*	46,800					41,000*	46,400						70
75	35,000*	42,700*	40,600				36,100*	42,800					36,500*	42,500						75
80	29,700*	39,200*	37,400				32,100*	39,400					32,600*	39,100	36,300					80
85		35,200*	34,700	32,100			28,800*	36,400	34,200				29,300*	36,100	33,900					85
90		31,000*	32,200	30,200				33,200*	31,800	37,000			26,400*	33,300*	31,500					90
95			30,000	28,100				29,700*	29,700	32,900	27,900		23,800*	30,400*	29,400					95
100			28,100	26,300	24,200			26,400*	27,700	26,100			27,300*	27,400	25,700					100
105			26,300	24,600	23,100			20,700*	26,100	24,500	22,100		24,600*	25,700	24,100					105
110				23,100	21,800				24,500	23,000	21,300		21,800*	24,200	22,700					110
115					20,500	18,600			23,000	21,700	20,100			22,800	21,300	19,400				115
120					19,400	16,900				20,500	19,000	17,100			20,100	18,700				120
125										17,900	16,600				21,400	19,000	17,600	15,700		125
130											15,700				18,000	16,700	15,300			130
135											14,800					15,800	14,500			135
140																14,900	13,700			140
145																	13,100			145
150																	12,400			150
155																				155
160																				160
165																				165
170																				170
175																				175
180																				180
185																				185
190																				190
195																				195
200																				200
205																				205
210																				210
215																				215
220																				220

Reeves 4 4 4 Reeves

### 107' Boom

Load Radius (ft)	105 ft Jib						115 ft Jib						125 ft Jib						Load Radius (ft)	
	Boom Angle (deg.)						Boom Angle (deg.)						Boom Angle (deg.)							
	88	83	78	73	68	63	88	83	78	73	68	63	88	83	78	73	68	63		
40																				40
45																				45
50	64,000*																			50
55	59,000*						56,500*						51,700*							55
60	53,300*						53,000*						49,500*							60
65	46,700*						46,700*	41,900					46,000*							65
70	41,200*	46,100					41,400*						41,800*							70
75	36,800*	42,200					37,000*	37,000*	41,900				37,200*	41,300						75
80	33,000*	38,900					33,200*	38,600					33,500*	38,200						80
85	29,700*	35,900	33,200				29,900*	35,700					30,200*	35,300						85
90	26,800*	33,100*	31,100				27,100*	32,900*					27,300*	32,400*						90
95	24,400*	30,600*	29,100				24,600*	30,400*	28,800				24,900*	29,900*	28,100					95
100	22,000*	27,900*	27,200				22,400*	28,200*	27,000				22,700*	27,700*	26,800					100
105		25,300*	25,500	23,500			20,500*	25,500*	25,200				20,700*	25,500*	25,200					105
110		22,900*	24,000	22,400			18,700*	23,300*	23,800	22,200			18,900*	23,300*	23,600					110
115		20,900*	22,500	21,100			16,900*	21,300*	22,300	20,900			17,100*	21,300*	22,200	20,200				115
120		18,500*	21,300	19,900	18,100			19,400*	21,100	19,700			15,600*	19,600*	21,000	19,400				120
125			20,100	18,900	17,400			17,800*	19,900	18,700	16,600		14,100*	17,800*	19,900	18,200				125
130			19,000	17,800	16,500			15,600*	18,900	17,700	16,200			16,500*	18,800	17,300				130
135				16,900	15,600	13,700			17,900	16,700	15,400			14,900*	17,800	16,400	14,900			135
140					14,700	13,500			16,300*	15,900	14,500	12,600		13,200*	16,900	15,500	14,200			140
145					14,100	12,800				15,100	13,800	12,500			15,900*	14,700	13,400			145
150					13,300	12,200					13,200	11,900			14,500*	14,100	12,700	11,400		150
155						11,500					12,500	11,200				13,400	12,200	10,800		155
160												10,600					11,500	10,200		160
165												10,100					11,000	9,700		165
170																		9,100		170
175																			8,700	175
180																				180
185																				185
190																				190
195																				195
200																				200
205																				205
210																				210
215																				215
220																				220

Reeves 4 4 4 Reeves

Note: Designed and rated to comply with ANSI Code B30.5.  
Capacities based on factors other than machine stability such as structural competence are shown by asterisk \* in the charts.  
Refer to notes P13 and P14.





# Luffing Jib Lifting Capacity

Unit: lbs

Counterweight: 121,300 lbs, Carbody weight: 23,810 lbs

107' Boom																			
Load Radius (ft)	135 ft Jib						145 ft Jib						155 ft Jib						Load Radius (ft)
	Boom Angle (deg.)						Boom Angle (deg.)						Boom Angle (deg.)						
	88	83	78	73	68	63	88	83	78	73	68	63	88	83	78	73	68	63	
40																			40
45																			45
50																			50
55																			55
60	46,000*						41,600*												60
65	44,000*						40,000*												65
70	41,800*						38,100*						35,800*						70
75	37,200*						36,800*						34,200*						75
80	33,500*	37,600					34,600*						32,800*						80
85	30,200*	35,000					30,800*						30,400*						85
90	27,300*	32,200*					27,900*	32,000*					27,500*	31,100*					90
95	24,900*	29,700*					25,300*	29,500*					25,100*	29,300*					95
100	22,700*	27,500*	26,000				23,100*	27,300*					22,900*	26,800*					100
105	20,700*	25,500*	24,900				21,100*	25,300*					20,900*	24,900*	23,500				105
110	18,900*	23,300*	23,300				19,400*	23,100*	23,100				19,100*	22,900*	22,800				110
115	17,400*	21,300*	22,000				17,800*	21,300*	21,800				17,600*	20,900*	21,300				115
120	15,800*	19,600*	20,800	18,800			16,500*	19,600*	20,600				16,300*	19,400*	20,100				120
125	14,500*	18,000*	19,700	18,000			15,200*	18,000*	19,400				14,900*	17,800*	19,000				125
130	13,200*	16,500*	18,600	17,000			13,800*	16,500*	18,400	16,700			13,800*	16,300*	18,000				130
135	11,900*	15,200*	17,600	16,200			12,700*	15,200*	17,400	15,800			12,700*	15,200*	17,000	15,200			135
140		14,100*	16,700	15,300	13,600		11,600*	14,100*	16,500	15,100			11,600*	13,800*	16,200	14,700			140
145		12,700*	15,900	14,500	13,200			13,000*	15,700	14,300			10,800*	12,700*	15,400	13,900			145
150			14,900*	13,800	12,500			11,900*	14,900	13,600	12,200		9,700*	11,900*	14,600	13,200			150
155			13,600*	13,200	11,900	9,800		11,000*	13,900*	13,000	11,500		8,300*	11,000*	13,800	12,500	10,800		155
160			12,300*	12,500	11,300	9,800		9,200*	12,700*	12,300	11,000	8,900		9,900*	12,700*	12,000	10,500		160
165				12,000	10,600	9,300			11,600*	11,700	10,400	8,900		9,000*	11,600*	11,300	10,000		165
170				11,300	10,100	8,900				11,700	10,400	8,500			10,800	10,800	9,400	7,800	170
175				9,700	8,300	7,900				10,600	9,300	8,100			9,900*	10,200	8,900	7,600	175
180					8,300	7,900					8,900	7,700				9,800	8,400	7,100	180
185						7,400					8,400	7,200				9,200	8,000	6,800	185
190												6,800				8,800	7,600	6,300	190
195												6,500				8,600	7,600	6,000	195
200																	7,100	5,700	200
210																			210
215																			215
220																			220

Reeves 3 3 3 Reeves

107' Boom																			
Load Radius (ft)	165 ft Jib						175 ft Jib						Load Radius (ft)						
	Boom Angle (deg.)						Boom Angle (deg.)												
	88	83	78	73	68	63	88	83	78	73	68	63							
40																			40
45																			45
50																			50
55																			55
60																			60
65																			65
70	32,000*						28,800*												70
75	31,000*						27,500*												75
80	29,800*						26,700*												80
85	28,500*						25,500*												85
90	27,100*						24,100*	28,200											90
95	24,900*	29,100*					22,400*	27,100											95
100	22,700*	26,600*					20,500*	25,500											100
105	20,700*	24,600*					18,900*	24,000*											105
110	19,100*	22,900*					17,400*	22,200*											110
115	17,600*	21,100*	21,000				15,800*	20,500*	19,100										115
120	16,200*	19,400*	19,900				14,700*	18,700*	18,500										120
125	14,700*	17,800*	18,800				13,400*	17,100*	17,500										125
130	13,600*	16,500*	17,700				12,500*	15,800*	16,500										130
135	12,500*	15,200*	16,800	14,500			11,200*	14,700*	15,600										135
140	11,600*	13,800*	15,900	14,400				13,400*	14,800	13,400									140
145	10,500*	12,700*	15,100	13,600				12,500*	14,100	12,600									145
150	9,200*	11,900*	14,300	13,000				11,400*	13,400	12,100									150
155		11,000*	13,600	12,300				10,500*	12,600	11,400									155
160		10,100*	12,700*	11,600	9,800				11,400	10,800	9,100								160
165		9,200*	11,600*	11,100	9,700			9,000*	11,600*	10,800	9,000								165
170		8,300*	10,800*	10,500	9,100				9,000*	10,800*	10,200	8,800							170
175			9,900*	10,000	8,500				9,900*	9,700	8,300								175
180			9,200*	9,400	8,100				9,000*	9,100	7,800								180
185			8,300*	9,000	7,700					8,700	7,300								185
190				8,500	7,200					8,200	7,000								190
195				8,100	6,900					7,800	6,600								195
200				7,700	6,500					7,300	6,200								200
205					6,100						5,800								205
210					5,800														210
215																			215
220																			220

Reeves 3 3 Reeves

Note: Designed and rated to comply with ANSI Code B30.5.

Capacities based on factors other than machine stability such as structural competence are shown by asterisk \* in the charts.

Refer to notes P13 and P14.

# LIFTING CAPACITY



## Luffing Jib Lifting Capacity

Unit: lbs

Counterweight: 121,300 lbs, Carbody weight: 23,810 lbs

117' Boom																			
Load Radius (ft)	75 ft Jib						85 ft Jib						95 ft Jib						Load Radius (ft)
	Boom Angle (deg.)						Boom Angle (deg.)						Boom Angle (deg.)						
	88	83	78	73	68	63	88	83	78	73	68	63	88	83	78	73	68	63	
40	78,000*																		40
45	71,000*																		45
50	64,000*																		50
55	58,000*						64,500*						64,000*						55
60	52,600*	56,600					59,000*	56,200					53,200*	50,300					60
65	45,800*	51,100					46,500*	51,000					46,900*	50,300					65
70	40,100*	46,500					41,000*	46,400					41,400*	46,000					70
75	35,200*	42,500	40,000				36,300*	42,500					36,800*	42,100					75
80		39,200	36,800				32,400*	39,100	36,400				32,800*	38,800					80
85		36,200	34,100				28,800*	36,200	33,700				29,500*	35,900	33,200				85
90		31,900*	31,700				24,900*	33,600	31,300				26,400*	33,200	30,900				90
95			29,500					30,400*	29,200	26,600			23,800*	31,000	28,800				95
100			27,600					27,100*	27,300	25,400			28,100*	27,000	24,400				100
105			25,900					22,400*	25,600	23,900			25,300*	25,300	23,400				105
110					21,000				22,400	21,100			22,700*	22,300	20,800				110
115					19,800				21,100	19,900				22,300	20,800	18,500			115
120					18,700	17,100			19,200	18,200				21,100	19,600	17,900			120
125					16,200	15,300			17,300	16,400				19,900	18,600	16,900			125
130									15,300	14,900					17,500	16,000	14,400	13,900	130
135									14,100	13,400						15,200	13,000	13,700	135
140									12,600							14,400	13,000	14,000	140
145																13,600	12,200	13,600	145
150																	11,500	11,500	150
155																			155
160																			160
165																			165
170																			170
175																			175
180																			180
185																			185
190																			190
195																			195
200																			200
205																			205
210																			210
215																			215
220																			220
Reeves	4						4						4						Reeves

117' Boom																			
Load Radius (ft)	105 ft Jib						115 ft Jib						125 ft Jib						Load Radius (ft)
	Boom Angle (deg.)						Boom Angle (deg.)						Boom Angle (deg.)						
	88	83	78	73	68	63	88	83	78	73	68	63	88	83	78	73	68	63	
40																			40
45																			45
50																			50
55	58,000*						53,800*						48,300*						55
60	53,500*						50,900*						46,400*						60
65	47,100*						47,100*						45,000*						65
70	41,600*	45,400					41,800*	41,500					41,000*						70
75	37,000*	41,800					37,200*	41,500					37,400*						75
80	33,200*	38,500					33,200*	38,200					33,700*	37,500					80
85	29,900*	35,600	32,700				30,200*	35,300					30,400*	35,000	35,300				85
90	27,100*	33,000	30,600				27,300*	32,800					27,500*	32,500					90
95	24,400*	30,800	28,500				24,600*	30,600	28,300				24,900*	30,300					95
100	22,200*	28,600*	26,600				22,400*	28,500*	26,400				22,700*	28,100*					100
105	20,000*	25,700*	25,000	22,700			20,500*	26,200*	24,800				20,700*	26,000*	24,600				105
110		23,500*	23,500	21,800			18,700*	23,800*	23,200	20,900			18,900*	23,800*	23,200				110
115		21,300*	22,100	20,600			16,900*	21,800*	21,900	20,200			17,400*	21,800*	21,800	19,200			115
120		19,100*	20,900	19,400				19,800*	20,700	19,100			15,800*	20,000*	20,600	18,700			120
125		15,800*	19,800	18,400	16,000			18,000*	19,600	18,000			14,300*	18,200*	19,500	17,700			125
130			17,700	17,400	15,700			16,500*	18,500	17,100				16,700*	18,500	16,700			130
135			17,700	16,500	14,900				17,600	16,300	14,700			15,400*	17,500	15,800	13,600		135
140				15,600	14,200	12,600			16,700	15,400	13,900			13,800*	16,600	15,100	13,500		140
145				14,800	13,400	12,000				14,600	13,200	11,000			15,700	14,300	12,800		145
150					12,700	11,300				13,900	12,500	11,000				13,600	12,100		150
155						10,600					12,000	10,400				13,000	11,500		155
160						10,100					11,300	9,900				12,300	10,900		160
165						9,500					10,800	9,300					10,300		165
170												8,800							170
175																			175
180																			180
185																			185
190																			190
195																			195
200																			200
205																			205
210																			210
215																			215
220																			220
Reeves	4						4						4						Reeves

Note: Designed and rated to comply with ANSI Code B30.5.

Capacities based on factors other than machine stability such as structural competence are shown by asterisk \* in the charts.

Refer to notes P13 and P14.





# Luffing Jib Lifting Capacity

Unit: lbs

Counterweight: 121,300 lbs, Carbody weight: 23,810 lbs

## 117' Boom

Load Radius (ft)	135 ft Jib						145 ft Jib						155 ft Jib						Load Radius (ft)
	Boom Angle (deg.)						Boom Angle (deg.)						Boom Angle (deg.)						
	88	83	78	73	68	63	88	83	78	73	68	63	88	83	78	73	68	63	
40																			40
45																			45
50																			50
55																			55
60	43,500*						39,400*												60
65	42,000*						38,000*												65
70	40,200*						36,300*												70
75	37,400*						35,000*												75
80	33,500*						33,000*							34,000*					80
85	30,400*	37,200					30,800*	34,100					30,400*	32,800					85
90	27,500*	34,700					27,900*	31,900					27,700*	30,800					90
95	24,900*	32,100					25,500*	29,700					25,300*	29,100					95
100	22,700*	27,800*	25,400				23,300*	27,600*					23,100*	27,200*					100
105	20,700*	25,700*	24,400				21,300*	25,500*	23,400				21,100*	25,100*					105
110	18,900*	23,800*	22,900				19,600*	23,500*	22,700				19,400*	23,300*					110
115	17,400*	21,800*	21,600				18,000*	21,800*	21,300				17,800*	21,300*	20,600				115
120	15,800*	20,000*	20,300	17,800			16,500*	20,000*	20,100				16,300*	19,600*	19,700				120
125	14,500*	18,200*	19,200	17,400			15,200*	18,200*	19,000	16,500			14,900*	18,000*	18,600				125
130	13,400*	16,900*	18,100	16,500			13,800*	16,900*	17,900	16,200			13,800*	16,700*	17,600				130
135	12,100*	15,600*	17,300	15,600			12,700*	15,600*	17,000	15,400			12,700*	15,400*	16,700	14,900			135
140		14,300*	16,400	14,800	12,500		11,600*	14,300*	16,200	14,500			11,600*	14,100*	15,800	14,200			140
145		13,000*	15,600	14,100	12,500		10,500*	13,200*	15,300	13,700	11,400		10,800*	13,000*	14,900	13,400			145
150		11,900*	14,800	13,300	11,900			12,100*	14,600	13,100	11,400		9,700*	12,100*	14,300	12,700	10,200		150
155			14,100	12,600	11,200			11,000*	13,800	12,400	10,900		8,500*	11,000*	13,500	12,100	10,200		155
160			13,000*	12,100	10,500	8,300			13,200	11,900	10,300			10,100*	12,800	11,400	9,800		160
165			11,600*	11,500	10,000	8,300			12,100*	11,300	9,800	7,400		9,200*	12,200	10,900	9,200		165
170					9,500	8,000				10,800	9,200	7,400		8,100*	11,200*	10,300	8,800		170
175					9,000	7,600				10,200	8,700	7,300			10,100*	9,200	8,200	6,500	175
180					8,500	7,200				9,700	8,200	6,900			9,200*	8,300	7,800	6,500	180
185						6,800				9,100	7,800	6,500				8,800	7,300	6,000	185
190											7,300	6,100					7,000	5,700	190
195												5,800					6,600	5,200	195
200												5,400					6,200	4,900	200
205																		4,700	205
210																			210
215																			215
220																			220
Reeves	3						3						3						Reeves

## 117' Boom

Load Radius (ft)	165 ft Jib						175 ft Jib						Load Radius (ft)
	Boom Angle (deg.)						Boom Angle (deg.)						
	88	83	78	73	68	63	88	83	78	73	68	63	
40													40
45													45
50													50
55													55
60													60
65													65
70	30,800*												70
75	29,500*						27,600*						75
80	28,300*						26,500*						80
85	27,500*						25,300*						85
90	26,300*						24,200*						90
95	25,100*	29,000					23,600*	27,300					95
100	22,900*	27,100					22,700*	26,100					100
105	20,900*	24,900*					20,700*	25,400					105
110	19,100*	23,100*					18,900*	23,900					110
115	17,600*	21,600*	19,900				17,400*	22,400					115
120	16,300*	19,800*	19,500				16,000*	20,900*	18,500				120
125	14,900*	18,000*	18,400				14,700*	19,100*	18,000				125
130	13,600*	16,700*	17,400				13,600*	17,600*	17,000				130
135	12,500*	15,400*	16,400				12,500*	16,300*	16,200				135
140	11,600*	14,100*	15,500	13,400			11,000*	14,900*	15,300				140
145	10,800*	13,000*	14,700	13,200				13,800*	14,500				145
150	8,800*	12,100*	13,900	12,400				12,700*	13,700	12,100			150
155		11,000*	13,300	11,700				11,600*	13,100	11,400			155
160		10,100*	12,600	11,100	8,800			10,800*	12,400	10,900			160
165		9,200*	12,100	10,500	8,700				11,700	10,200	7,800		165
170		8,500*	11,200*	10,000	8,400				11,100*	9,700	7,800		170
175			10,300*	9,400	7,900				10,100*	9,100	7,700		175
180			9,400*	9,000	7,400				9,400*	8,700	7,100		180
185			8,500*	8,400	7,000					8,200	6,800		185
190				8,000	6,700					7,800	6,300		190
195				7,700	6,200					7,300	6,000		195
200				7,200	5,900					6,900	5,600		200
205					5,600					6,600	5,200		205
210					5,200						4,900		210
215													215
220													220
Reeves	3						3						Reeves

Note: Designed and rated to comply with ANSI Code B30.5.

Capacities based on factors other than machine stability such as structural competence are shown by asterisk \* in the charts.

Refer to notes P13 and P14.



# LIFTING CAPACITY



## Luffing Jib Lifting Capacity

Unit: lbs

Counterweight: 121,300 lbs, Carbody weight: 23,810 lbs

### 127' Boom

Load Radius (ft)	75 ft Jib						85 ft Jib						95 ft Jib						Load Radius (ft)
	Boom Angle (deg.)						Boom Angle (deg.)						Boom Angle (deg.)						
	88	83	78	73	68	63	88	83	78	73	68	63	88	83	78	73	68	63	
40	78,000*																		40
45	71,000*																		45
50	64,000*																		50
55	59,000*						64,000*						61,600*						55
60	53,100*	56,100					58,000*						54,000*						60
65	46,000*	50,900					53,700*	55,600					50,000*						65
70	40,300*	46,200					46,900*	50,400					47,100*	49,800					70
75	35,400*	42,400	38,900				41,200*	45,900					41,600*	45,500					75
80		39,000	36,100				36,500*	42,100					37,000*	41,600					80
85		36,100	33,300				32,600*	38,600	35,300				33,000*	38,300					85
90		33,600	31,000	28,100			29,100*	35,800	32,900				29,700*	35,400	32,200				90
95		29,100*	28,900	26,700				33,200	30,600				26,600*	32,900	30,200				95
100			27,100	25,000				31,000	28,500	25,700			24,000*	30,700	28,200				100
105			25,300	23,400	20,800			27,900*	26,700	24,500				28,700	26,300				105
110				22,000	20,000			24,000*	23,500	21,700				25,900*	24,600				110
115				20,700	18,800				23,500	21,700				23,300*	23,200	21,200			115
120				19,500	17,800				22,100	20,500	17,900			20,000*	21,900	20,000			120
125					16,800	14,500				19,200	17,400				20,600	18,900	16,500		125
130					15,800	14,300				18,100	16,400				19,500	17,800	16,000		130
135						13,500				17,100	15,500	13,100				16,900	15,200		135
140						12,600					14,700	13,900				16,000	14,400		140
145																	13,600	11,500	145
150																	12,800	10,500	150
155																	12,200	9,900	155
160																			160
165																			165
170																			170
175																			175
180																			180
185																			185
190																			190
195																			195
200																			200
205																			205
210																			210
215																			215
220																			220
Reeves					4					4									Reeves

### 127' Boom

Load Radius (ft)	105 ft Jib						115 ft Jib						125 ft Jib						Load Radius (ft)	
	Boom Angle (deg.)						Boom Angle (deg.)						Boom Angle (deg.)							
	88	83	78	73	68	63	88	83	78	73	68	63	88	83	78	73	68	63		
40																			40	
45																			45	
50																			50	
55	55,200*						50,000*						46,000*						55	
60	52,000*						48,000*						44,000*						60	
65	47,300*						46,700*						42,000*						65	
70	41,800*						42,100*						40,500*						70	
75	37,200*	41,400					37,400*	40,700					37,900*						75	
80	33,500*	38,100					33,500*	37,800					33,900*	37,400					80	
85	29,900*	35,200					30,200*	34,900					30,600*	34,600					85	
90	27,100*	32,700					27,300*	32,500					27,500*	32,000					90	
95	24,600*	30,500	28,200				24,900*	30,300	27,300				25,100*	29,800					95	
100	22,200*	28,500	26,300				22,700*	28,300	26,100				22,900*	27,900					100	
105	20,200*	26,500*	24,800	21,800			20,700*	26,500	24,400				20,900*	26,100*	24,100				105	
110		24,000*	23,200	21,000			18,700*	24,300*	23,000				18,900*	24,300*	22,700				110	
115		21,800*	21,900	19,800			17,100*	22,200*	21,700	19,500			17,400*	22,200*	21,300				115	
120		19,600*	20,700	18,700				20,200*	20,500	18,400			15,800*	20,200*	20,100	17,400			120	
125			19,600	17,600	15,200			19,400	19,400	17,400			14,300*	18,700*	19,000	17,000			125	
130			18,500	16,700	14,900			18,700*	18,400	16,500				17,100*	17,900	16,000			130	
135			17,500	15,800	14,100				17,400	15,600	13,800			15,600*	17,000	15,200			135	
140				14,900	13,400				17,400	15,600	13,800			14,300*	16,200	14,400	12,200		140	
145				14,200	12,600					14,100	12,400				15,400	13,700	11,900		145	
150					12,000	10,200				13,300	11,700				14,600	13,000	11,200		150	
155					11,300	9,700				12,600	11,100					13,800*	12,400	10,600	155	
160					10,600	9,100					10,500						11,700	10,000	8,100	160
165						8,500												9,500	7,900	165
170																		9,000	7,400	170
175																		8,400	7,000	175
180																			6,600	180
185																				185
190																				190
195																				195
200																				200
205																				205
210																				210
215																				215
220																				220
Reeves					3					3										Reeves

Note: Designed and rated to comply with ANSI Code B30.5.

Capacities based on factors other than machine stability such as structural competence are shown by asterisk \* in the charts. Refer to notes P13 and P14.



# Luffing Jib Lifting Capacity

Unit: lbs

Counterweight: 121,300 lbs, Carbody weight: 23,810 lbs

## 127' Boom

Load Radius (ft)	135 ft Jib						145 ft Jib						155 ft Jib						Load Radius (ft)
	Boom Angle (deg.)						Boom Angle (deg.)						Boom Angle (deg.)						
	88	83	78	73	68	63	88	83	78	73	68	63	88	83	78	73	68	63	
40																			40
45																			45
50																			50
55																			55
60	41,000*						37,500*												60
65	39,500*						36,000*												65
70	38,000*						34,700*												70
75	36,700*						33,000*						32,500*						75
80	35,000*						32,000*						31,000*						80
85	31,300*	36,800					30,700*	33,500					30,000*						85
90	28,200*	34,200					28,200*	31,500					28,800*						90
95	25,700*	31,800					25,500*	29,400					27,200*	30,800					95
100	23,300*	29,600					23,300*	27,400					25,300*	28,900					100
105	21,300*	25,900					21,300*	25,600	22,800				23,100*	27,000					105
110	19,600*	24,100*	22,300				19,600*	23,900*	22,100				21,100*	25,200*					110
115	18,000*	22,200*	21,000				18,000*	22,100*	20,800				19,400*	23,300*					115
120	16,500*	20,500*	19,800				16,500*	20,200*	19,600				17,800*	21,800*	20,100				120
125	15,200*	18,700*	18,700	16,000			15,200*	18,700*	18,500				16,300*	20,000*	19,100				125
130	13,800*	17,100*	17,700	15,800			14,100*	17,100*	17,500				14,900*	18,500*	18,100				130
135	12,500*	15,800*	16,800	14,900			12,700*	15,800*	16,600	14,600			13,800*	16,900*	17,100				135
140		14,500*	15,900	14,200			11,600*	14,500*	15,700	13,800			11,600*	14,500*	15,400	13,500			140
145		13,200*	15,200	13,400	10,800		10,800*	13,400*	14,900	13,200			10,800*	13,200*	14,500	12,700			145
150			14,400	12,700	10,800			12,300*	14,200	12,500	9,800		9,900*	12,300*	13,800	12,100			150
155			13,700	12,100	10,300			11,200*	13,500	11,900	9,800		8,800*	11,200*	13,200	11,400			155
160			13,100	11,500	9,800			10,300*	12,800	12,800	9,400			10,300*	12,500	10,800	8,400		160
165			12,200*	10,900	9,200	7,000			12,200	10,600	8,900			9,400*	11,900	10,200	8,300		165
170				10,300	8,700	6,800			11,500*	10,100	8,400				11,300	9,700	7,900		170
175				9,800	8,200	6,700			10,300*	9,500	7,900	6,000			10,600*	9,100	7,400		175
180					7,800	6,200				9,100	7,400				8,700	7,000	5,900		180
185					7,300	5,900					6,700	5,200			8,200	6,700	5,900		185
190						5,600					6,200	4,900			7,800	6,200	5,900		190
195						5,100						4,600			7,300	5,900	5,500		195
200																			200
205																			205
210																			210
215																			215
220																			220
Reeves			3						3						3				Reeves

## 127' Boom

Load Radius (ft)	165 ft Jib						175 ft Jib						Load Radius (ft)
	Boom Angle (deg.)						Boom Angle (deg.)						
	88	83	78	73	68	63	88	83	78	73	68	63	
40													40
45													45
50													50
55													55
60													60
65													65
70	29,700*						26,500*						70
75	28,500*						25,300*						75
80	27,200*						24,500*						80
85	26,200*						23,500*						85
90	25,200*						22,500*						90
95	24,300*	28,600					21,800*	26,000					95
100	22,900*	26,700					20,700*	24,800					100
105	20,900*	25,000					18,900*	23,500					105
110	19,100*	23,200*					17,400*	22,100					110
115	17,600*	21,600*					16,000*	20,900	17,800				115
120	16,300*	20,000*	18,500				14,700*	19,500*	17,600				120
125	14,900*	18,500*	17,800				13,600*	17,800*	16,600				125
130	13,800*	16,900*	16,800				12,500*	16,500*	15,600				130
135	12,700*	15,600*	15,900				10,800*	15,200*	14,800				135
140	11,600*	14,500*	15,100	12,300				14,100*	14,100	11,200			140
145	10,800*	13,200*	14,300	12,300				13,000*	13,300	11,200			145
150	8,500*	12,300*	13,600	11,700				11,900*	12,600	10,800			150
155		11,200*	12,800	11,100				11,000*	12,000	10,100			155
160		10,300*	12,300	10,400					11,400	9,500			160
165			11,600	9,900					10,900	9,000			165
170			11,100	9,300					10,300	8,500			170
175			10,500	8,900	7,100				9,800	8,000			175
180			9,700*	8,300	6,700				9,000*	7,600			180
185			9,000*	7,900	6,300					7,200			185
190				7,400	5,900					6,800			190
195				7,000	5,600					6,300			195
200				6,700	5,200					6,000			200
205					4,900								205
210													210
215													215
220													220
Reeves			3						3				Reeves

Note: Designed and rated to comply with ANSI Code B30.5.

Capacities based on factors other than machine stability such as structural competence are shown by asterisk \* in the charts.

Refer to notes P13 and P14.



# LIFTING CAPACITY



## Luffing Jib Lifting Capacity

Unit: lbs

Counterweight: 121,300 lbs, Carbody weight: 23,810 lbs

137' Boom																			
Load Radius (ft)	75 ft Jib						85 ft Jib						95 ft Jib						Load Radius (ft)
	Boom Angle (deg.)						Boom Angle (deg.)						Boom Angle (deg.)						
	88	83	78	73	68	63	88	83	78	73	68	63	88	83	78	73	68	63	
40	72,000*																		40
45	69,200*																		45
50	63,600*																		50
55	58,000*						62,000*							56,800*					55
60	53,000*	55,500					58,200*							54,400*					60
65	46,500*	50,400					53,000*							52,500*					65
70	40,700*	45,800					47,300*							47,600*					70
75	35,700*	41,900					41,600*	45,500						41,800*	45,000				75
80	31,500*	38,600	35,300				36,800*	41,600						37,200*	41,200				80
85		35,800	32,800				32,600*	38,300	34,700					33,200*	38,000				85
90		33,200	30,400				29,100*	35,400	32,400					29,700*	35,100	31,600			90
95		30,600	28,400	25,400				32,900	30,000					26,800*	32,600	29,600			95
100			26,500	24,200				30,700	27,900					24,000*	30,400	27,600			100
105			24,900	22,800				28,700	26,200	23,200					28,400	25,700			105
110			23,300	21,300				25,500*	24,500	22,300					26,500	24,200	21,300		110
115				20,100	18,000				23,100	21,000					23,800*	22,700	20,600		115
120				18,900	17,000				21,700	19,800					21,300*	21,300	19,400		120
125					16,000	13,500			18,700	17,600	16,600				20,100	20,100	18,200		125
130					15,200	13,300			17,600	15,700					19,000	17,300	14,400		130
135						12,500			16,600	14,800					17,900	16,400	14,400		135
140						11,700				14,100	11,400					15,500	12,800	10,200	140
145						11,100				13,300	10,600						12,200	10,200	145
150											10,100						11,400	9,700	150
155																		9,100	155
160																		8,500	160
165																			165
170																			170
175																			175
180																			180
185																			185
190																			190
195																			195
200																			200
205																			205
210																			210
215																			215
220																			220
Reeves	3						3						3						Reeves

137' Boom																				
Load Radius (ft)	105 ft Jib						115 ft Jib						125 ft Jib						Load Radius (ft)	
	Boom Angle (deg.)						Boom Angle (deg.)						Boom Angle (deg.)							
	88	83	78	73	68	63	88	83	78	73	68	63	88	83	78	73	68	63		
40																			40	
45																			45	
50																			50	
55	51,000*						47,000*							42,000*					55	
60	49,000*						45,000*							40,500*					60	
65	47,200*						43,200*							39,000*					65	
70	42,100*						41,000*							37,200*					70	
75	37,400*	41,000					37,600*	40,300						37,200*					75	
80	33,500*	37,600					33,700*	37,400						34,100*	36,700				80	
85	30,200*	34,800					30,400*	34,600						30,600*	34,200				85	
90	27,300*	32,400					27,500*	32,100						27,700*	31,700				90	
95	24,600*	30,200	27,200				24,900*	29,900						25,100*	29,500				95	
100	22,400*	28,200	25,900				22,700*	27,900	25,000					22,900*	27,600	24,400			100	
105	20,200*	26,400	24,200				20,700*	26,200	24,000					20,900*	25,900	23,500			105	
110		24,400*	22,800				18,900*	24,600	22,500					19,100*	24,300	22,100			110	
115		22,200*	21,400	19,100			17,100*	22,700*	21,200					17,400*	22,700	20,800			115	
120		20,200*	20,200	18,000				20,700*	20,000	17,200				15,800*	20,700*	19,700	16,700		120	
125			19,100	17,000				18,900*	18,900	16,800					18,900*	18,600	16,400		125	
130			18,100	16,200				17,100*	17,900	15,800					17,400*	17,600	15,500		130	
135			17,100	15,300	13,000			15,400*	16,900	15,100					15,800*	16,600	14,600		135	
140				14,500	12,500				16,200	14,300	12,000				14,500*	15,800	13,800		140	
145				13,700	11,900	9,200			16,200	14,300	11,500					14,900	13,200		145	
150				13,000	11,200	9,200			15,300	13,500	11,000					14,300	12,500	10,400	150	
155					10,600	8,800				12,200	10,300	7,800				13,500	11,900	9,900	155	
160						8,200					9,800	7,800					11,200	9,300	6,700	160
165						7,800					9,200	7,400					10,600	8,800	6,700	165
170											8,800	7,000					10,100	8,300	6,600	170
175												6,700						7,900	6,100	175
180												6,200							5,800	180
185																			5,500	185
190																				190
195																				195
200																				200
205																				205
210																				210
215																				215
220																				220
Reeves	3						3						3						Reeves	

Note: Designed and rated to comply with ANSI Code B30.5.

Capacities based on factors other than machine stability such as structural competence are shown by asterisk \* in the charts. Refer to notes P13 and P14.





# Luffing Jib Lifting Capacity

Unit: lbs

Counterweight: 121,300 lbs, Carbody weight: 23,810 lbs

## 137' Boom

Load Radius (ft)	135 ft Jib						145 ft Jib						155 ft Jib						Load Radius (ft)
	Boom Angle (deg.)						Boom Angle (deg.)						Boom Angle (deg.)						
	88	83	78	73	68	63	88	83	78	73	68	63	88	83	78	73	68	63	
40																			40
45																			45
50																			50
55																			55
60	38,800*						35,500*												60
65	37,000*						34,000*												65
70	35,800*						32,600*												70
75	34,300*						31,500*						30,600*						75
80	33,000*						30,000*						29,200*						80
85	31,300*						29,000*	33,200					28,000*						85
90	28,400*	31,500					27,800*	31,100					27,200*						90
95	25,700*	29,300					25,700*	28,900					26,200*						95
100	23,500*	27,300					23,500*	27,100					25,000*	28,600					100
105	21,600*	25,600	22,500				21,600*	25,300					23,300*	26,700					105
110	19,800*	24,000	21,800				19,600*	23,800					21,300*	25,000					110
115	18,000*	22,400*	20,600				18,000*	22,100*	20,000				19,400*	23,400					115
120	16,500*	20,800*	19,400				16,500*	20,700*	19,100				17,800*	21,800*	19,100				120
125	15,200*	19,100*	18,200	15,400			15,200*	18,900*	18,000				16,500*	20,200*	18,700				125
130	13,800*	17,600*	17,300	15,200			14,100*	17,600*	17,000				15,200*	18,900*	17,700				130
135	12,700*	16,000*	16,400	14,400			13,000*	16,000*	16,200	13,700			13,800*	17,400*	16,700				135
140		14,700*	15,500	13,600			11,900*	14,700*	15,300	13,300			11,600*	14,700*	14,900	12,700			140
145		13,600*	14,700	12,800	9,900		10,800*	13,600*	14,500	12,600			10,800*	13,600*	14,200	12,100			145
150		12,300*	14,100	12,200	9,900			12,500*	13,800	11,900			9,900*	12,500*	13,400	11,400			150
155		11,000*	13,400	11,500	9,500			11,300	12,500	10,600	8,300		9,000*	11,400*	12,700	10,800			155
160			11,000	9,000	9,000			10,500*	12,500	10,600	8,300			10,500*	12,200	10,200			160
165			10,300	8,400					11,900	10,100	8,100				9,700*	11,500	9,700		165
170			9,900	8,000					11,300	9,500	7,700				8,800*	11,000	8,500		170
175			9,300	7,600					10,600*	9,000	7,200				7,400*	10,400	8,100		175
180				7,100						8,500	6,800					10,000	8,100		180
185				6,700						8,100	6,500						7,700		185
190				6,300						7,700	6,000						7,200		190
195											5,700						6,900		195
200																			200
205																			205
210																			210
215																			215
220																			220
Reeves	3						3						3						Reeves

## 137' Boom

Load Radius (ft)	165 ft Jib						175 ft Jib						Load Radius (ft)							
	Boom Angle (deg.)						Boom Angle (deg.)													
	88	83	78	73	68	63	88	83	78	73	68	63								
40																			40	
45																			45	
50																			50	
55																			55	
60																			60	
65																			65	
70	28,000*						25,400*												70	
75	27,000*						24,500*												75	
80	26,000*						23,500*												80	
85	25,000*						22,600*												85	
90	24,000*						21,800*												90	
95	23,000*	27,200					21,000*	25,500											95	
100	22,000*	26,000					20,000*	23,800											100	
105	21,100*	24,600					18,900*	22,800											105	
110	19,400*	23,100					17,600*	21,900											110	
115	17,800*	21,600*					16,000*	20,600											115	
120	16,300*	20,000*	18,000				14,700*	19,500											120	
125	14,900*	18,700*	17,400				13,600*	18,100*	16,000										125	
130	13,800*	17,400*	16,400				12,700*	16,700*	15,300										130	
135	12,700*	15,800*	15,500				10,800*	15,400*	14,400										135	
140	11,600*	14,700*	14,700					14,300*	13,600										140	
145	10,800*	13,400*	13,900					13,200*	13,000										145	
150	8,300*	12,500*	13,200	11,100				12,100*	12,300	9,700									150	
155		11,400*	12,500	10,400				11,200*	11,600	9,500									155	
160		10,500*	11,900	9,900					11,100	9,000									160	
165		9,700*	11,300	9,300					10,400	8,400									165	
170		8,800*	10,800	8,800					9,900	8,000									170	
175			10,200	8,300					9,400	7,600									175	
180			9,700	7,800					8,900	7,100									180	
185			9,200	7,300						6,700									185	
190			8,400*	7,000						6,200									190	
195				6,600						5,900									195	
200				6,200						5,600									200	
205				5,800						5,200									205	
210																			210	
215																			215	
220																			220	
Reeves	2						2													Reeves

Note: Designed and rated to comply with ANSI Code B30.5.

Capacities based on factors other than machine stability such as structural competence are shown by asterisk \* in the charts.

Refer to notes P13 and P14.

# LIFTING CAPACITY



## Luffing Jib Lifting Capacity

Unit: lbs

Counterweight: 121,300 lbs, Carbody weight: 23,810 lbs

		147' Boom																		
Load Radius (ft)	75 ft Jib						85 ft Jib						95 ft Jib						Load Radius (ft)	
	Boom Angle (deg.)						Boom Angle (deg.)						Boom Angle (deg.)							
	88	83	78	73	68	63	88	83	78	73	68	63	88	83	78	73	68	63		
40	66,200*																		40	
45	63,800*																		45	
50	60,800*						57,000*												50	
55	58,600*						55,000*							52,400*					55	
60	54,000*	55,000					52,500*							48,500*					60	
65	46,900*	49,900					47,600*							47,000*					65	
70	41,000*	45,400					41,800*	45,000						42,300*	44,600				70	
75	36,100*	41,600					37,000*	41,200						37,400*	40,700				75	
80		38,300	34,300				32,800*	37,900						33,500*	37,500				80	
85		35,400	32,100				29,300*	35,100						29,900*	34,700				85	
90		32,900	29,800					32,600	29,400					26,800*	32,200	28,600			90	
95		30,600	27,800					30,400	27,400					24,200*	30,000	27,300			95	
100			26,000	23,200				28,400	25,600						28,100	25,500			100	
105			24,300	22,000				24,000	22,500						26,300	24,000			105	
110			22,900	20,700				22,500	20,300						24,400*	22,400			110	
115			19,500	18,400	16,000			21,200	19,100					21,800*	21,200	19,900			115	
120			17,300	15,300	14,500	11,500		18,000	17,000	15,200					20,000	17,700			120	
125				13,600	14,500	11,500		16,000	14,100	14,800					18,900	16,700	13,600		125	
130					13,600	11,500			14,100	13,200					17,800	15,700	13,500		130	
135						10,900			12,500	11,700						14,200	12,000	12,700		135
140									9,700							13,400	11,300	10,800	8,500	140
145									9,700								11,300	8,500	8,500	145
150									9,100								10,800	8,100	8,100	150
155									8,500								10,100	7,700	7,700	155
160																				160
165																				165
170																				170
175																				175
180																				180
185																				185
190																				190
195																				195
200																				200
205																				205
210																				210
215																				215
220																				220
Reeves	3						3						3						Reeves	

		147' Boom																	
Load Radius (ft)	105 ft Jib						115 ft Jib						125 ft Jib						Load Radius (ft)
	Boom Angle (deg.)						Boom Angle (deg.)						Boom Angle (deg.)						
	88	83	78	73	68	63	88	83	78	73	68	63	88	83	78	73	68	63	
40																			40
45																			45
50																			50
55	47,700*						44,000*												55
60	45,800*						42,100*												60
65	44,000*						40,500*												65
70	41,500*						39,000*												70
75	37,600*	40,500					37,000*												75
80	33,700*	37,300					34,000*	37,000											80
85	30,400*	34,500					31,000*	34,200											85
90	27,300*	32,000					27,500*	31,700											90
95	24,900*	29,800	26,700				25,200*	29,600											95
100	22,400*	27,800	25,200				23,000*	27,600	24,500										100
105		26,100	23,600				21,100*	25,900	23,400										105
110		24,500	22,200				19,100*	24,300	22,000										110
115		22,700*	21,000	17,800			17,300*	22,900	20,700										115
120		20,700*	19,800	17,400				21,100*	19,600	16,500									120
125			18,700	16,400				19,100*	18,500	16,200									125
130			17,700	15,500				17,600*	17,500	15,300									130
135			16,700	14,700	12,000			15,800*	16,600	14,500									135
140				13,900	11,700				15,700	13,700	10,600								140
145				13,200	11,100				14,900	13,000	10,600								145
150				12,500	10,400				14,200	12,300	10,100								150
155					9,900	7,600				11,600	9,500								155
160						7,300				9,000	6,300								160
165						6,900				8,500	6,300								165
170						6,500				8,000	6,200								170
175						6,100				7,600	5,800								175
180											5,500								180
185																			185
190																			190
195																			195
200																			200
205																			205
210																			210
215																			215
220																			220
Reeves	3						3						3						Reeves

Note: Designed and rated to comply with ANSI Code B30.5.

Capacities based on factors other than machine stability such as structural competence are shown by asterisk \* in the charts. Refer to notes P13 and P14.





# Luffing Jib Lifting Capacity

Unit: lbs

Counterweight: 121,300 lbs, Carbody weight: 23,810 lbs

## 147' Boom

Load Radius (ft)	135 ft Jib						145 ft Jib						155 ft Jib						Load Radius (ft)
	Boom Angle (deg.)						Boom Angle (deg.)						Boom Angle (deg.)						
	88	83	78	73	68	63	88	83	78	73	68	63	88	83	78	73	68	63	
40																			40
45																			45
50																			50
55																			55
60	36,200*						33,600*												60
65	34,800*						32,000*												65
70	33,500*						31,000*												70
75	32,200*						29,800*												75
80	31,000*						28,500*												80
85	30,000*						27,500*												85
90	28,000*	31,000					26,300*	30,800											90
95	26,000*	28,900					25,400*	28,600											95
100	23,500*	27,000					23,500*	26,700											100
105	21,600*	25,300	22,000				21,600*	25,000											105
110	19,800*	23,800	21,300				19,800*	23,400											110
115	18,000*	22,300	20,000				18,000*	21,900*	19,500										115
120	16,700*	20,800*	18,900				16,700*	20,500*	18,600										120
125	15,200*	19,400*	17,800				15,400*	19,400*	17,600										125
130	13,800*	17,800*	16,800				14,100*	17,800*	16,600										130
135	12,700*	16,300*	15,900	13,300			13,000*	16,500*	15,700										135
140		14,900*	15,200	13,000			11,900*	15,200*	14,900	12,000									140
145		13,800*	14,400	12,200				13,800*	14,200	11,900									145
150		12,500*	13,600	11,500	8,400			12,700*	13,400	11,200									150
155		11,400*	13,000	11,000	8,400			11,600*	12,700	10,600									155
160			12,400	10,300	8,200			10,800*	12,200	10,000	7,300								160
165			11,700	9,800	7,800				11,500	9,400	7,300								165
170			11,200	9,200	7,200				11,000	9,000	6,900								170
175				8,800	6,900				10,400	8,400	6,600								175
180				8,300	6,500					8,000	6,100								180
185					6,000					7,600	5,800								185
190					5,700						5,400								190
195											5,000								195
200											4,700								200
210																			210
215																			215
220																			220
Reeves	3						2						2						Reeves

## 147' Boom

Load Radius (ft)	165 ft Jib						175 ft Jib						Load Radius (ft)
	Boom Angle (deg.)						Boom Angle (deg.)						
	88	83	78	73	68	63	88	83	78	73	68	63	
40													40
45													45
50													50
55													55
60													60
65													65
70	26,800*						24,000*						70
75	25,600*						23,000*						75
80	24,700*						22,200*						80
85	23,800*						21,500*						85
90	23,000*						20,500*						90
95	22,000*	26,000					19,800*	23,500					95
100	21,000*	24,800					19,000*	22,500					100
105	20,400*	24,000					18,200*	21,800					105
110	19,400*	23,000					17,600*	21,000					110
115	17,800*	21,900					16,300*	20,000					115
120	16,300*	20,600	17,000				14,900*	19,100					120
125	14,900*	19,400	16,800				13,600*	18,100	15,000				125
130	13,800*	18,400	15,800					16,900*	14,500				130
135	12,700*	17,300*	15,100					15,800*	13,600				135
140	11,600*	15,900*	14,100					14,500*	13,000*				140
145	10,800*	14,700*	13,400	10,100				13,400*	12,100*				145
150	8,100*	13,600*	12,700	10,100				11,400*	11,000*	9,100			150
155		12,500*	12,100	9,800				11,400*	11,000*	8,900			155
160		11,400*	11,400	9,200				10,500*	10,300*	8,300			160
165		10,500*	10,800	8,700				9,700*	9,700*	7,900			165
170		9,700*	10,100	8,200				9,200*	9,200*	7,400			170
175			9,500*	7,700				8,800*	8,800*	7,000			175
180			9,000*	7,200				8,300*	8,300*	6,600			180
185			8,500*	6,900				7,700*	7,700*	6,100			185
190			8,100*	6,500						5,800			190
195			6,500*	6,100						5,500			195
200				5,700						5,000			200
210				5,400									210
215													215
220													220
Reeves	2						2						Reeves

Note: Designed and rated to comply with ANSI Code B30.5.

Capacities based on factors other than machine stability such as structural competence are shown by asterisk \* in the charts.

Refer to notes P13 and P14.



# LIFTING CAPACITY



## Luffing Jib Lifting Capacity

Unit: lbs

Counterweight: 121,300 lbs, Carbody weight: 23,810 lbs

Load Radius (ft)		75 ft Jib						85 ft Jib						95 ft Jib						Load Radius (ft)
		Boom Angle (deg.)						Boom Angle (deg.)						Boom Angle (deg.)						
		88	83	78	73	68	63	88	83	78	73	68	63	88	83	78	73	68	63	
40	60,700*																			40
45	59,000*																			45
50	56,300*						52,500*													50
55	54,200*						50,700*													55
60	52,000*						48,500*						48,500*							60
65	47,300*	54,300					46,700*						44,800*							65
70	41,400*	49,300					42,100*	44,500					41,000*							70
75	36,300*	41,100					37,200*	40,700					37,600*	40,300						75
80		37,900	33,500				33,000*	37,400					33,700*	37,100						80
85		35,000	31,300					34,700	30,400				30,200*	34,200						85
90		32,500	29,100					32,100	28,600				27,100*	31,800						90
95		30,300	27,100					30,000	26,600				24,400*	29,600	26,000					95
100				21,900				28,100	25,000					27,700	24,900					100
105				23,800	21,100			26,300	23,300	20,000				26,000	23,300					105
110				22,200	19,900			22,900	22,000	19,500				24,400	21,900					110
115					18,700				20,700	18,200				22,400*	20,600	17,600				115
120					17,600	14,400			19,500	17,300					19,500	16,800				120
125					16,600	14,200			18,400	16,300	13,000				18,400	15,900				125
130						13,400				15,400	12,800				17,200	15,100				130
135						12,600				14,500	12,200					14,200	13,500	11,300		135
140							9,200				11,400					13,500	11,000	10,300		140
145							9,000				10,800					12,700	10,300	9,800	6,600	145
150							8,400				10,100		8,000				9,200		6,600	150
155													7,400						6,100	155
160													7,000							160
165																				165
170																				170
175																				175
180																				180
185																				185
190																				190
195																				195
200																				200
205																				205
210																				210
215																				215
220																				220
Reeves	3						3						3						Reeves	

Load Radius (ft)		105 ft Jib						115 ft Jib						125 ft Jib						Load Radius (ft)
		Boom Angle (deg.)						Boom Angle (deg.)						Boom Angle (deg.)						
		88	83	78	73	68	63	88	83	78	73	68	63	88	83	78	73	68	63	
40																				40
45																				45
50																				50
55	44,000*						40,500*													55
60	42,000*						39,000*													60
65	40,700*						37,500*													65
70	39,000*						36,000*													70
75	37,000*	40,000					34,500*													75
80	33,900*	36,800					33,000*	36,000												80
85	30,600*	34,000					31,900*	33,700												85
90	27,500*	31,600					28,800*	31,300												90
95	24,900*	29,400					26,200*	29,200												95
100	22,400*	27,500					23,800*	27,300	23,500											100
105	20,500*	25,700	24,000				21,600*	25,500	22,800											105
110		24,200	23,000				19,600*	24,000	21,300											110
115		22,800	20,300				17,800*	22,500	20,100											115
120		21,100*	19,200	16,100				21,300	19,000											120
125		18,900*	18,100	15,600				19,700*	17,900											125
130		16,300*	17,100	14,800				17,800*	16,900	14,400										130
135			16,300	13,900				16,300*	16,000	13,700										135
140			15,400	13,200	10,100				15,300	13,000										140
145				12,500	10,000				14,500	12,200										145
150				11,900	9,400				13,700	11,500	9,100									150
155				11,200	8,900					11,000	8,500									155
160					8,300	5,800				10,300	8,100									160
165					7,900	5,800					7,600									165
170						5,500					7,100									170
175						5,000					6,800									175
180																				180
185																				185
190																				190
195																				195
200																				200
205																				205
210																				210
215																				215
220																				220
Reeves	3						2						2						Reeves	

Note: Designed and rated to comply with ANSI Code B30.5.

Capacities based on factors other than machine stability such as structural competence are shown by asterisk \* in the charts. Refer to notes P13 and P14.



# Luffing Jib Lifting Capacity

Unit: lbs

Counterweight: 121,300 lbs, Carbody weight: 23,810 lbs

## 157' Boom

Load Radius (ft)	135 ft Jib						145 ft Jib						155 ft Jib						Load Radius (ft)
	Boom Angle (deg.)						Boom Angle (deg.)						Boom Angle (deg.)						
	88	83	78	73	68	63	88	83	78	73	68	63	88	83	78	73	68	63	
40																			40
45																			45
50																			50
55																			55
60	34,000*																		60
65	32,700*																		65
70	31,300*																		70
75	30,000*						29,800*												75
80	29,000*						28,800*												80
85	28,000*						27,500*												85
90	27,000*	30,600					26,500*												90
95	25,600*	28,500					25,500*	29,500											95
100	23,800*	26,600					24,500*	28,000											100
105	21,800*	24,900					23,500*	26,300											105
110	19,800*	23,300					21,600*	24,600											110
115	18,200*	22,000	19,100				19,800*	23,100											115
120	16,700*	20,600*	18,200				18,200*	21,700	18,400										120
125	15,400*	19,400*	17,300				16,700*	20,300*	18,000										125
130	14,100*	18,200*	16,400				15,400*	18,900*	17,000										130
135	12,700*	16,700*	15,500	12,400			14,100*	17,800*	16,000										135
140		15,400*	14,600	12,100			13,000*	16,700*	15,200										140
145		14,100*	13,900	11,400			11,900*	15,400*	14,400	11,000									145
150		12,700*	13,200	10,800				14,100*	13,600	11,000									150
155		11,600*	12,500	10,200				13,000*	13,000	10,400									155
160			12,000	9,700	6,700			11,900*	12,300	9,900									160
165			11,200*	9,100	6,700				11,500*	9,300									165
170				8,500	6,300				11,000*	8,800									170
175				8,100	6,000				10,300*	8,200									175
180				7,700	5,600				9,700*	7,800									180
185					5,200				9,000*	7,300									185
190					4,900					6,900									190
195					4,400					6,600									195
200										6,100									200
205																			205
210																			210
215																			215
220																			220
Reeves	2						2						2						Reeves

## 157' Boom

Load Radius (ft)	165 ft Jib						175 ft Jib						Load Radius (ft)
	Boom Angle (deg.)						Boom Angle (deg.)						
	88	83	78	73	68	63	88	83	78	73	68	63	
40													40
45													45
50													50
55													55
60													60
65													65
70	25,300*												70
75	24,500*						23,000*						75
80	23,300*						22,200*						80
85	22,500*						21,300*						85
90	21,800*						20,500*						90
95	20,700*						19,700*						95
100	20,000*	24,200					19,000*	22,500					100
105	19,300*	23,300					18,300*	21,500					105
110	18,500*	22,500					17,600*	20,800					110
115	17,800*	21,400					17,000*	20,000					115
120	16,500*	20,200					16,000*	19,200					120
125	15,200*	19,100					14,900*	18,500	14,100*				125
130	13,800*	18,000	14,600*				13,700*	17,800	14,100				130
135	12,700*	16,800*	14,100*				12,700*	16,600*	13,600*				135
140	11,700*	15,800*	13,200*					15,600*	12,700*				140
145		14,900*	12,500*					14,700*	12,000*				145
150		13,800*	11,900*					13,600*	11,300*				150
155		12,700*	11,200*	8,500				13,600*	11,300*				155
160		11,600*	10,500*	8,400				12,500*	10,700*	7,700			160
165		10,800*	9,900*	8,000				11,600*	10,100*	7,700			165
170			9,400*	7,400					9,600*	7,600			170
175			8,800*	7,000					9,000*	7,000			175
180			8,300*	6,600					8,500*	6,700			180
185			7,900*	6,200					8,100*	6,200			185
190			7,400*	5,800					7,400*	5,900			190
195			6,800*	5,500					7,000*	5,500			195
200				5,100					6,600*	5,100			200
205				4,800						4,800			205
210													210
215													215
220													220
Reeves	2						2						Reeves

Note: Designed and rated to comply with ANSI Code B30.5.

Capacities based on factors other than machine stability such as structural competence are shown by asterisk \* in the charts.

Refer to notes P13 and P14.



# TRANSPORTATION PLAN

Name	Dimension ft-in (mm)	Weight lbs (kg)
<b>Base Machine</b> <ul style="list-style-type: none"> <li>• Boom base</li> <li>• Gantry</li> <li>• Crane backstop</li> <li>• Wire rope (Front / boom hoist)</li> <li>• Selfremoval cylinder</li> <li>• Without crawler</li> </ul>		<p style="text-align: center;">84,193 (38,190)</p>
<b>Base Machine</b> <ul style="list-style-type: none"> <li>• Gantry</li> <li>• Wire rope (Front / rear / boom hoist)</li> <li>• Without crawler</li> </ul>		<p style="text-align: center;">74,669 (33,870)</p>
<b>Base Machine</b> <ul style="list-style-type: none"> <li>• Without crawler</li> <li>• Without gantry</li> <li>• Without wire rope (Front / rear / boom base)</li> </ul>		<p style="text-align: center;">68,474 (31,060)</p>
<b>Self Removal Cylinder</b>		<p style="text-align: center;">3,307 (1,500)</p>
<b>Crawler</b>		<p style="text-align: center;">53,450 (16,080)</p>



A series of horizontal lines for writing, consisting of 25 evenly spaced lines across the page.

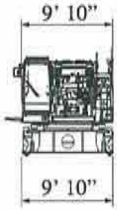
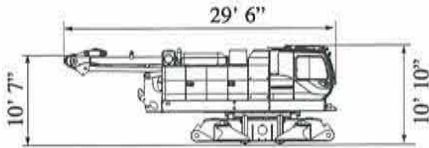




# PARTS AND ATTACHMENTS

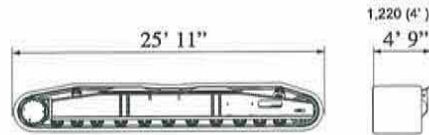
## Base Machine

Gantry, wire rope (Front/rear/boom hoist),  
Without crawler  
Weight: 74,669 lbs Width: 9' 10"



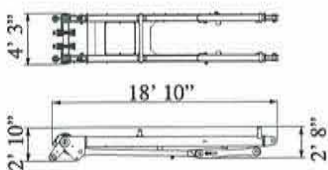
## Crawler

Weight: 53,450 lbs



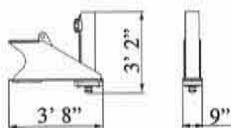
## Gantry

Weight: 4,773 lbs



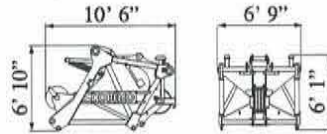
## Translifter

Weight: 2,690 lbs x 4 pieces



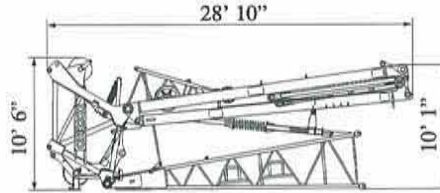
## Luffing Upper Boom

Weight: 5,434 lbs



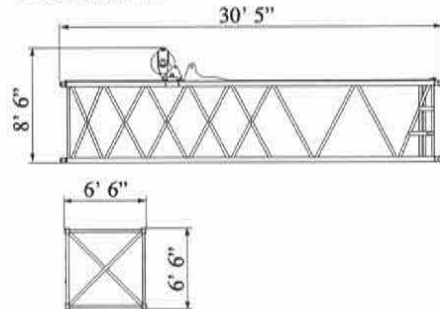
## Luffing Boom Tip Assembly

Weight: 11,684 lbs



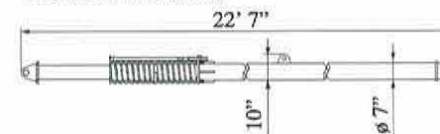
## 30 ft Special Insert Boom for Tower (Inc. Guide Sheave and Steps)

Weight: 3,957 lbs



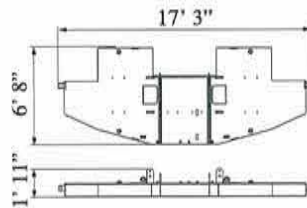
## Crane Backstop

Weight: 520 lbs (1 piece)



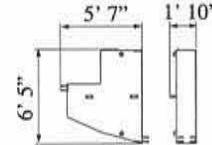
## Counterweight (Base weight)

Weight: 22,046 lbs



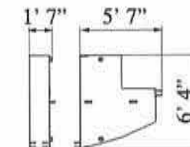
## Counterweight

Weight: 9,921 lbs



## Counterweight (Add. weight)

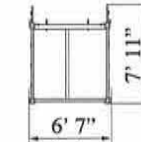
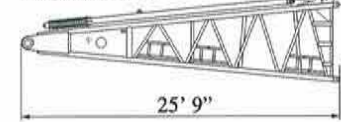
Weight: 9,921 lbs



Dimensions: ft Weight: lbs

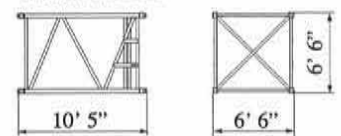
## Boom Base

Weight: 8,223 lbs



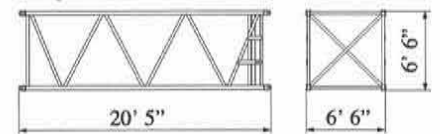
## 10 ft Insert Boom

Weight: 1,168 lbs



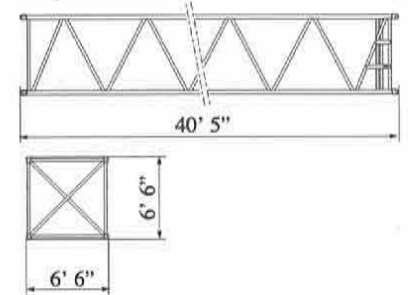
## 20 ft Insert Boom

Weight: 1,874 lbs



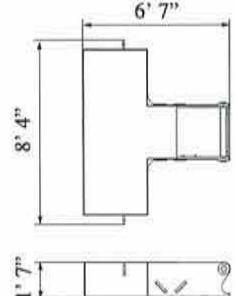
## 40 ft Insert Boom

Weight: 3,175 lbs



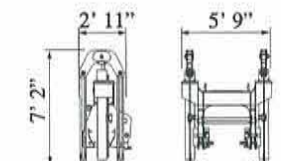
## Carbodyweight

Weight: 23,810 lbs x 2 pieces



## Self Removal Cylinder

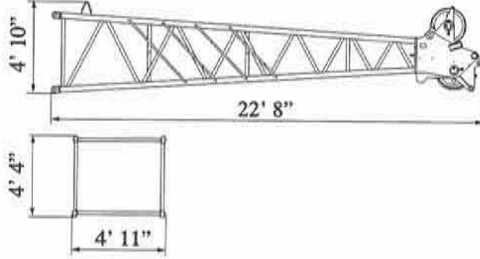
Weight: 3,307 lbs



Dimensions: ft Weight: lbs

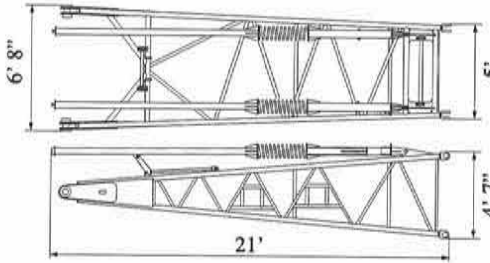
**Jib Tip (Luffing Jib)**

Weight: 2,579 lbs



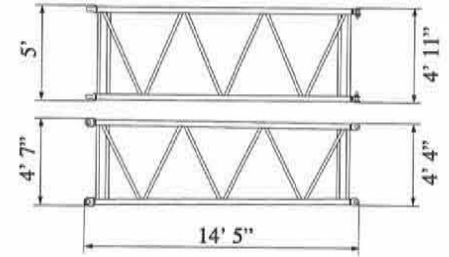
**Jib Base (Luffing Jib)**

Weight: 2,646 lbs



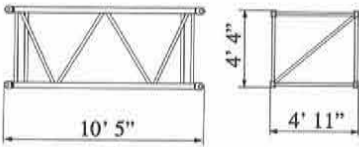
**14 ft Taper Insert Jib (Luffing Jib)**

Weight: 904 lbs



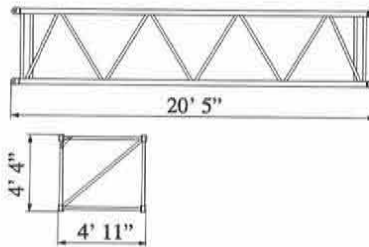
**10 ft Insert Jib (Luffing Jib)**

Weight: 683 lbs



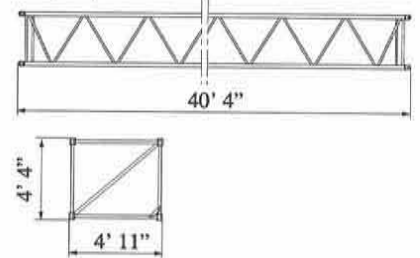
**20 ft Insert Jib (Luffing Jib)**

Weight: 1,190 lbs



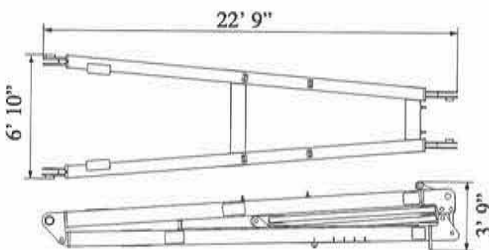
**40 ft Insert Jib (Luffing Jib)**

Weight: 2,116 lbs



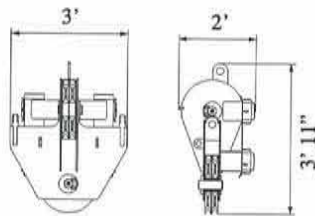
**Jib Strut (Luffing Jib)**

Weight: 4,431 lbs



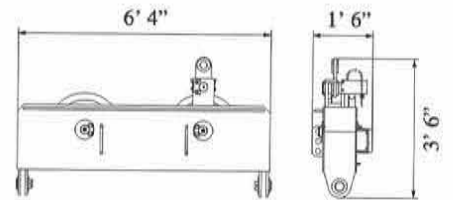
**Jib Upper Spreader (for Luffing)**

Weight: 573 lbs



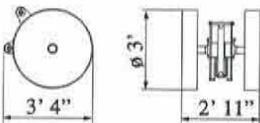
**Jib Lower Spreader (for Luffing)**

Weight: 893 lbs



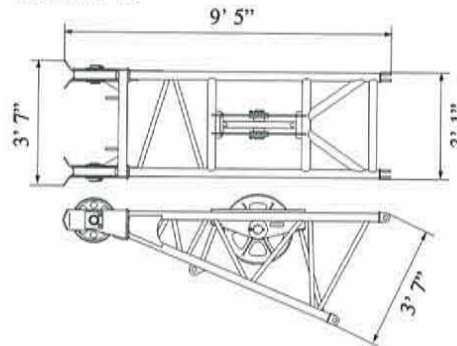
**Auxiliary Sheave (for Luffing)**

Weight: 838 lbs




**Rear Guide Roller**

Weight: 937 lbs







Note: This catalog may contain photographs of machines with specifications, attachments and optional equipment not certified for operation in your country. Please consult KOBELCO for those items you may require. Due to our policy of continual product improvements all designs and specifications are subject to change without advance notice.

Copyright by KOBELCO CRANES CO., LTD. No part of this catalog may be reproduced in any manner without notice.

## **KOBELCO CRANES CO., LTD.**

17-1, Higashigotanda 2-chome, Shinagawa-ku, Tokyo 141-8626 JAPAN

Tel: +81-3-5789-2130 Fax: +81-3-5789-3372

URL: <http://www.kobelco-cranes.com/>

Inquiries To :

## **KOBELCO CRANES NORTH AMERICA, INC.**

10845 Train Court, Houston, Texas 77041, USA

Tel: +1-713-856-5755 Fax: +1-713-856-9072

URL: <http://www.kobelcocranesnorthamerica.com/>