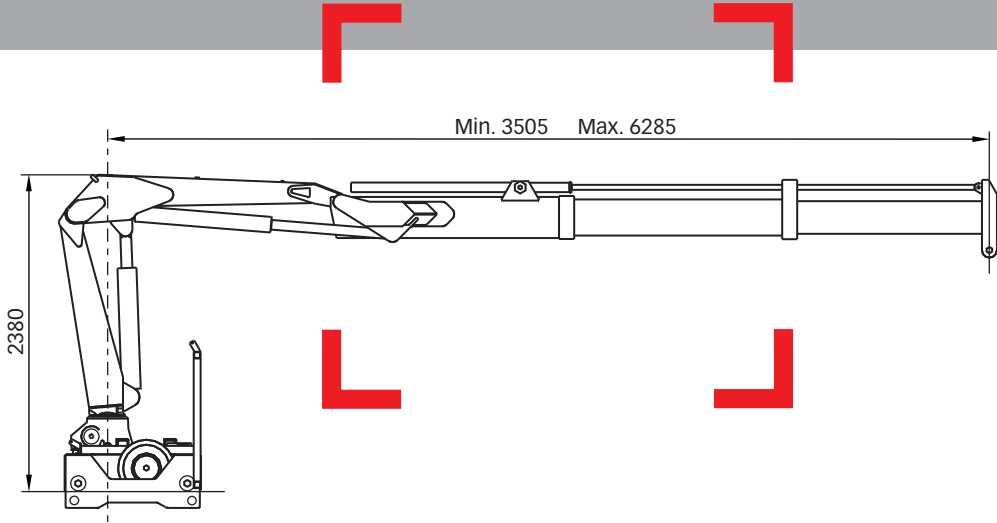


HIAB 100 R Capacity 10 tm



Basic data

HIAB 100 R Basic data

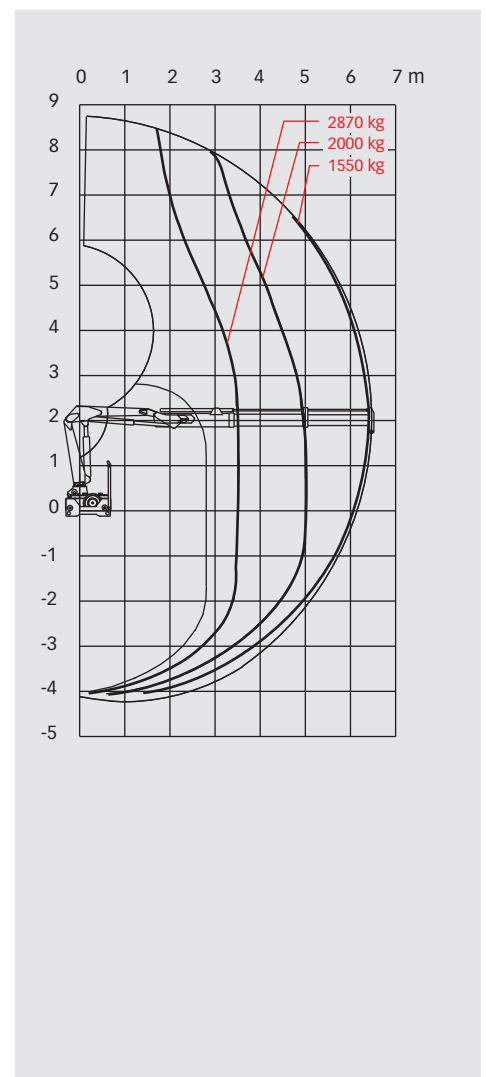
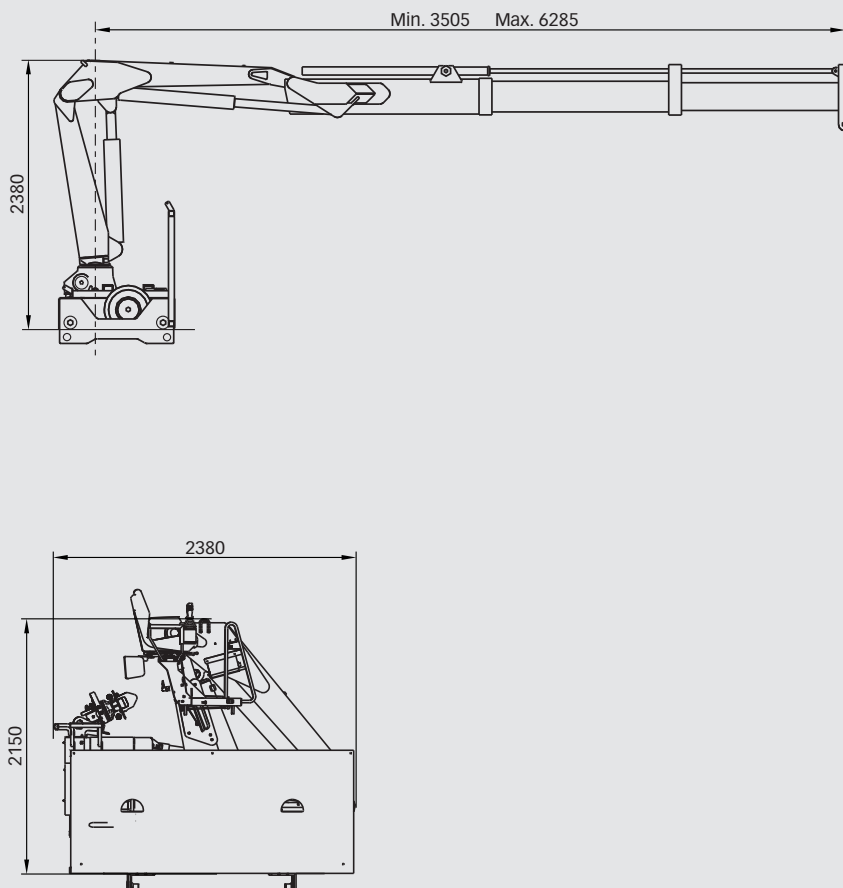
Technical data

100 R F-1 100 R F-2

Max. lifting capacity (kNm)	98	95
Outreach - hydraulic extensions (m)	5.0	6.3
Outreach / lifting capacity, standard (m / kg)	3.4 / 2900	3.5 / 2870
	5.0 / 2000	5.0 / 2000
	-	6.3 / 1550
Slewing angle	400°	400°
Height in folded position (mm)	2150	2150
Width between side boards (mm)	2380*	2380*
Length of chassis without hydraulic stabilizers (mm)	1000	1000
Weight - "standard" crane without stabilizers (kg)	2050*	2190*
Weight - stabilizer equipment (kg)	540	540

*Width between side boards and weight are based on a track width of 2250mm

HIAB 100 R F-2



Disclaimer

Hiab cranes has been built to meet the highest standards of safety and service life and has been thoroughly tested. Strength calculations for this model have been carried out in accordance with DIN 15018. Hiab's certified Quality Assurance System complies with the ISO 9001. Some of the items in our literature may be extra equipment. Certain applications may require an official permit. We reserve the right to change technical specifications without prior notice. Hiab cranes produced for EU-countries are CE-marked and comply with the European Standard EN 12999.