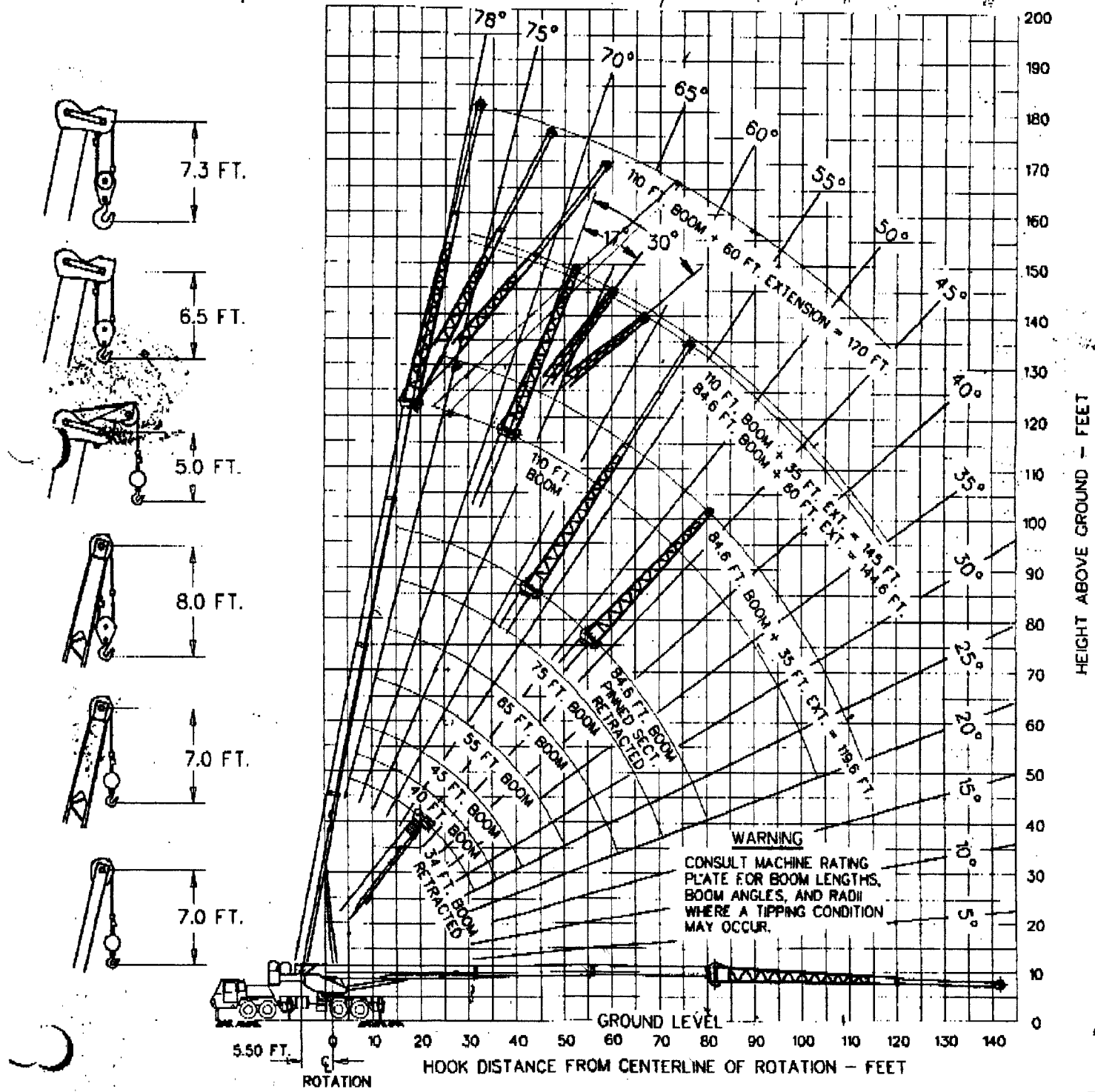


P&H CENTURY T-500

50-ton hydraulic truck crane 170-ft (51.8 m) boom and extension



PUMPS: DETROIT DIESEL ALLISON 6L71TA ENGINE: One Tandem gear pump operating at 2480 full load RPM, with the first section providing 49.2 GPM (186 liter/min.) to the boom hoist and telescope circuits, and the second section providing 37.7 GPM (143 liter/min.) to the main and auxiliary winch circuit.

One Tandem gear pump operating at 2480 full load RPM, with the first section providing 32.1 GPM (121 liter/min.) to the swing circuit, and the second section providing 32.1 GPM (121 liter/min.) to the outrigger or winch boost circuits.

One Vickers vane pump, driven from the engine accessory drive, operating at 2100 full load RPM, provides 18.5 GPM (74 liter/min.), regulated to 8 GPM (30 liter/min.) to the steering circuit.

OIL RESERVOIR: 156 gallons (590 liter) mounted at front, right side of engine frame.

OIL COOLER: Oil to air, tube and fin type with internal turbulator.

CONTROL VALVES (STANDARD): One single-spool valve for swing circuits.

One two-spool valve with one spool for boom hoist and one spool for telescope circuits.

One single-spool valve for main winch circuit.

CONTROL VALVES (OPTIONAL): One two-spool valve with one spool for main winch and one spool for auxiliary winch circuits.

One single-spool valve for independent winch circuit.



SWING UNIT: Hydraulic motor driving through reduction gear reducer to pinion gear. 360° continuous rotation to 2.4 RPM Full Load.

SWING GEAR: Single shear ball swing bearing with integral spur gear.

SWING BRAKE: Spring applied, hydraulically released, internal disc brake, integral with swing reducer. Hand brake control lever mounted on side console. A manual foot pedal applies brake for static holding.

HOUSE LOCK: Two position (front and rear) pin-in-hole lock manually engaged with house lock lever in cab is standard. A positive 390° position lock is optional.



CARRIER

TYPE: P&H 8 x 4

WEIGHT: Including ball bearing swing circle, hydraulic outriggers and standard tires and Caterpillar 3206T engine. 33,457 lbs. (15,156 kg.)

FRAME: Rectangular frame members of 80,000 P.S.I. (5600 kg/cm²) yield strength alloy steel, reinforced with box constructed cross-members of 80,000 psi (5600 kg/cm²) yield strength alloy steel. Engine frame is channel construction of 47,000 P.S.I. (3300 kg/cm²) yield strength alloy steel.



OUTRIGGERS: Hydraulic out and down type. Eight double acting hydraulic cylinders for independent horizontal and vertical motion of each beam operated from the operator's cab or at each side of the carrier. Each vertical cylinder is equipped with a holding valve.

OUTRIGGER BEAMS: 80,000 P.S.I. yield strength alloy steel box extending to a maximum spread of 23' 7" (7.2 meters) from centerline of float to centerline float with the machine fully raised on the outriggers. Retracted width of the outriggers without floats is 9' 10" (3.0 M).

OUTRIGGER FLOATS: Individually removable floats with storage on carrier. Float size 24" (610 mm) dia. with effective nominal surface area of 452 sq. in. (2920 cm²) per float.

STEERING: Hydraulic powered gear and integral valve with a hydraulic power assist cylinder on each front axle.



CAB: One man, left side, low profile fully enclosed all-weather steel cab with full vision safety glass. Cab is cushion mounted for vibration isolation.

CAB EQUIPMENT: Contains all controls and instrumentation, including illuminated instrument panel with speedometer, tachometer, hour meter, voltmeter, air pressure gauges, low air pressure indicator lights, fuel gauge, oil pressure gauge, water temperature gauge, air horns, west coast rear view mirrors, electric windshield wiper, engine conditioning warning system with noise alarm and warning light for high temperature and low oil pressure, heater and defroster. Deluxe operator's seat with torsion suspension and vinyl covering.

LIGHTS: Dual headlights, taillights, stop lights, front and rear direction signals with emergency flashers, rear license plate light, front, rear and

CARRIER STANDARD EQUIPMENT: Front bumper, full fenders, sliding engine hood, low hooks front and rear, carrier mounted boom rack, dunnage boxes, float storage racks and back-up warning device, windshield washer, and fire extinguisher.

CARRIER OPTIONAL EQUIPMENT: Cold starting aid, rotating beacon light, spare tire and wheel, pintle hook, alcohol evaporator, air dryer, tire inflation kit, and hydraulically operated front stabilizer with 24.0 inch (601 mm) diameter float. Two 8D batteries with a reserve capacity of 430 min. and CCA at 0°F of 900 amps.

BRAKES; SERVICE: Front Axles — air operated, cam actuated drum and shoe type.

Rear Axles — air operated, spring type safety chambers, cam actuated, drum and shoe type.

BRAKES; PARKING: Cam actuated, drum and shoe type on rear axles. Spring applied, air released for safety.

FRONT AXLE: Tubular tandem.

REAR AXLE: Single reduction with interaxle differential. Ratio 6.143:1.

SUSPENSION: Front Axle — Four spring mounted tandem with torque rods.

Rear Axle — Solid bogie mounted tandem with torque rods.

TRANSMISSIONS: Eaton Corp. Fuller Road Ranger RTO-11813, 13 speeds forward, 2 reverse, used with Detroit Diesel Allison 6L71TA Engine.

Eaton Corp. Fuller Road Ranger RT6613, 13 speeds forward, two reverse, used with Caterpillar 3206T Engine.

CLUTCH: Spicer 14 in. (356 mm) two plate with asbestos linings, coaxial torque dampener, upshift clutch brake and air actuation assist.

RADIATOR: Water to air, tube and fin type core. Thermostatic temperature controlled.

AIR CLEANER: Donaldson single-stage primary dry air cleaner with "Durafite" filter media.

MUFFLER: Donaldson — muffler and resonator.

ELECTRICAL: 24 volt system with negative ground. Two N150 batteries with a reserve capacity of 285 min. and CCA at 0°F of 840 amps. Wire harnesses have environmentally sealed Deutsch connectors.

FUEL TANK: FWA approved steel tank, 80 gal. (303 liter) mounted on right side of carrier, behind front outriggers.

TIRES: Standard — Front 15.00 R 22.5 18 ply — rear 11.00 x 20 14 ply-duals. Optional — Front 16.00 R 22.5 18 ply — rear 12.00 x 20 16 ply-duals.



POWER PLANTS:

Make: Caterpillar 3206T
 Max. H.P.: 250 hp (186 kw) at 2800 rpm.
 Max. Torque: 840 ft./lb. (88.5 kg. - m) at 1400 rpm.
 No. Cyl.: 6 cylinder, 4.5 in. (114.3 mm) bore, 5.0 in. (127 mm) stroke.
 Disp: 636 cu. in. (10.42 liter).
 Cycle: 4

Alternator: Delco 24 volt, 65 amp.
 Aspiration: Turbocharged.
 Air Compressor: Bendix TU-FLO 501.

*Theoretical Performance:
 Low Gear 1.6 mph (2.8 km/hr.) 41% grade.
 High Gear 49 mph (79 km/hr.) 1% grade.

Make: Detroit Diesel Allison 6L71TA.
 Max. HP: 265 hp (198 kw) at 2100 rpm.
 Max. Torque: 737 ft./lbs. (101.9 kg./m) at 1400 rpm.
 No. Cyl.: 6 cyl., 4.25 in. (107.8 mm) bore, 5.0 in. (127 mm) stroke.
 Disp: 426 cu. in. (6.98 liter)
 Cycle: 2

Alternator: Delco 24 volt, 85 amp.
 Aspiration: Turbocharged.
 Air Compressor: Bendix TU-FLO 501

*Theoretical Performance:
 Low Gear 2.2 mph (3.5 km/hr.) 35% grade.
 High Gear 51 mph (82 km/hr.) 1.1% grade.

*Theoretical performance is based on the following:

GVW: 77,000 lbs. (34,920 kg.)
 Front Tires: 15.00 R 22.5
 Rear Tires: 12.00 x 20
 Counterweight: 8000 lbs. (3,630 kg.)
 Speed and gradeability will vary due to engine performance, vehicle weight and tire condition. Gradeability based on SAE J688.

specifications



BOOM: 34 ft. (10.4 m) retracted to 110 ft. (33.5 m) extended length, four section boom consisting of a boom base, two hydraulically extended and retracted sections and a fourth pinned section which can be hydraulically extended and retracted. Boom point has five 17.362" (44 mm) dia. main metallic sheaves with roller bearings and idler sheaves with bronze bearings.

EXTENSION (OPTIONAL): 35 ft. (10.7 m) swing around lattice structure boom extension with a single metallic sheave. It can be put into operating condition by pivoting from its stored position on right side of the boom base section. Self-storing pins connect extension to boom head. In the operating position the extension is offset 2" from the main boom.

TELESCOPIC BOOM EXTENSION (OPTIONAL): 35 ft. (10.7 m) to 60 ft. (18.3 m) swing around lattice structure boom extension with a welded four plate telescope section with a single metallic sheave. It can be put into operating condition by pivoting from its stored position on the right side of the boom base section and pinned to the boom head. Telescopic section is then extended on rollers and pinned. In the operating position the extension is offset 2" from the main boom.

EXTENSION OFFSET MECHANISM (OPTIONAL): Pivoting links which allow either boom extension above to be offset to 17° or 30° from the main boom.

AUXILIARY SHEAVE (OPTIONAL): Boom point mounted with single metallic sheave.

HOOK BLOCKS (OPTIONAL): 50 ton (45.4 metric ton) 5 sheave with swivel hook and safety latch. Sheaves are for .75 inch (19 mm) wire rope.

20 ton (18.1 metric ton) 1 sheave with swivel hook and safety latch. Sheave is for .75 inch (19 mm) wire rope.

BALL HOOK (OPTIONAL): 8.5 ton (7.7 metric ton) weighted swivel hook with safety latch. .75 inch (19 mm) wire rope.



UPPERSTRUCTURE

OPERATOR'S CAB: Fully enclosed, all-weather steel cab with full-vision safety glass and hinged top window with tinted glass. Cab is cushion mounted for vibration isolation.

OPERATOR'S CAB STANDARD EQUIPMENT: Contains all crane function controls. Front control console includes: engine water temperature gauge, engine oil pressure gauge, hydraulic oil temperature gauge, air pressure gauge, fuel gauge, volt meter, winch high speed indicators; anti-two-block warning, boom angle indicator, dash light, and electrical horn. Deluxe operator's seat with torsion suspension and vinyl covering, windshield wiper, fire extinguisher, and seat belts.

OPERATOR'S CAB OPTIONAL EQUIPMENT: Main winch drum turn indicator, diesel or propane heater, defroster fan, windshield washer, roof window wiper, rotary roof beacon and tachometer, hand control lever for independent main and auxiliary winch.



CONTROLS: Front console mounted hand control levers for swing, telescope, auxiliary winch (optional), main winch, and boom hoist. Front floor mounted foot pedals for swing brake, boom hoist, and engine throttle. Front console instrument panel contains ignition switch.

Side console has hand throttle control, swing lock control, and electrical outrigger panel — all standard.

ELECTRICAL SYSTEM: Electrical system is 24 volt negative ground. Wiring harnesses have protective covering and are independently clamped to framework. Wire harnesses have environmentally sealed Deutsch connectors. Toggle switches used in operator's cab are environmentally sealed.

THROTTLE CONTROL: Variable air control for foot operation, and positive position cable control for hand use.

MISCELLANEOUS UPPER OPTIONS: Load indicating device, flood lights, 360 degree swing lock, winch spooling roller, anti-two-block and load moment shutdown device.

COUNTERWEIGHTS: 8,000 lbs. (3,630 kg.) standard, non-removable type.

8,000 lbs. (3,630 kg.) with 7,525 lbs. (3,414 kg.) removable with a self-contained raising or lowering device using the winch.

1,080 lbs. (490 kg.) auxiliary counterweight to be used on units without an auxiliary winch.



MAIN WINCH (STANDARD): P&H Model 1581 with two speed motor, mounted to rear of revolving frame. Planetary gearing and equal speed, power raising and lowering. Infinitely variable speed control. Spring applied hydraulically released load holding multi-disc brake is automatic.

Drum: 15 in (381 mm) pitch diameter, 18.5 in. (470 mm) wide, 23.5 in. (597 mm) flange diameter.

Cable: .75 in (19 mm) diameter 6 x 25 extra improved plow steel with 7 x 7 I.W.R.C. Strength limit: 16,900 lbs. (7,619 kg.).

Drum Capacity .75 in. (19 mm) Cable: 554 ft. (168 m), 5 layers.

Line Pull Maximum: 18,262 lbs. (8,291 kg) 1st layer, low speed, 13,223 lbs. (5,997 kg.) 5th layer..

Maximum Available Line Pull for starting load mid-air, 5th layer: 11,000 lbs. (4991 kg).

Line Speed Maximum: (At 2750 Engine R.P.M. and with .75 in. Dia. cable) 642 ft./min. (196 meter/min.) 5th layer, high speed.

AUXILIARY WINCH (OPTIONAL): P&H Model 1581 with two speed motor, mounted to rear of revolving frame on the counterweight. Planetary gearing and equal speed, power raising and lowering. Infinitely variable speed control. Spring applied hydraulically released load holding multi-disc brake is automatic.

Drum: 15 in. (381 mm) pitch diameter, 18.5 in. (470 mm) wide, 23.5 in. (597 mm) flange diameter.

Cable (optional): .75 in. (19 mm) diameter 6 x 25 extra improved plow steel with 7 x 7 I.W.R.C. Strength limit: 16,900 lbs. (7,619 kg.)

Cable (optional): .75 in. (19 mm) diameter, 8 x 25 spin resistant, extra improved plow steel, 7 x 7 I.W.R.C. Strength limit: 10,380 lbs. (4,688 kg.)

Drum Capacity .75 in. (19 mm) Cable: 554 ft. (168 m), 5 layers.

Line Pull Maximum: 18,262 lbs. (8,291 kg.) 1st layer, low speed, 13,223 lbs. (5,997 kg.) 5th layer (.75 in. cable).

Maximum Available Line Pull for starting load mid-air, 5th layer: 11,000 lbs. (4,991 kg.) (.75 in. cable).

Line Speed Maximum (At 2750 Engine R.P.M. and with .75 in. dia. cable): 642 ft./min. (196 M/min.) 5th layer, high speed.

Cable (optional): .625 in. (16 mm) diameter, 6 x 25 extra improved plow steel, 7 x 7 I.W.R.C.

Drum Capacity .625 in. (16 mm) Dia. Cable: 648 ft. (199 m), 5 layers.

Line Pull Maximum: 15,437 lbs. (6,961 kg.) 1st layer, low speed, 13,950 lbs. (6,327 kg.) 5th layer (.625 in. cable).

Maximum Available Line Pull for starting load mid-air, 5th layer: 11,000 lbs. (4,991 kg.) (.625 in. cable).

Line Speed Maximum: (At 2750 engine R.P.M. and with .625 in. dia. cable) 608 ft./min. (185 M/min.) 5th layer, high speed.)

SHEAVE AND DRUM TO WIRE ROPE RATIOS: (Pitch Diameter)

	Sheave to Wire Rope	Drum to Wire Rope
Main Boom Sheaves		
.75" Wire Rope	24.15:1	— —
.625" Wire Rope	28.78:1	— —
Main Winch		
.75" Wire Rope	— —	20.0:1
.625" Wire Rope	— —	23.8:1



BOOM HOIST: Two 7.874" (200 mm) I.D. cylinders, double-acting. Hydraulically powered raising and lowering with holding valve.

BOOM TELESCOPE: Two 6.3" (160 mm) I.D. cylinders — double-acting. Hydraulically powered raising and lowering with holding valve. Supplied by a single hose loop.

HYDRAULIC SYSTEM

FILTERS: Two 10-micron nominal return line filters mounted in the hydraulic reservoir. All return oil is filtered. Indicators external.

PUMP DRIVE: Driven off carrier engine crankshaft, with manual pump disconnect for highway travel. 1,182 pump speed to 1.0 engine speed drive ratio for Detroit Diesel Allison 6L71TA Engine. 1.00 pump speed to 1.00 engine speed for Caterpillar 3208T Engine.

PUMPS: CATERPILLAR 3208T ENGINE: One Tandem gear pump operating at 2600 full load RPM, with the first section providing 51.6 GPM (195 liter/min.) to the boom hoist and telescope circuits, and the second section providing 39.5 GPM (150 liter/min.) to the main and auxiliary winch circuits.

One tandem gear pump operating at 2600 full load RPM, with the first section providing 33.6 GPM (127 liter/min.) to the swing circuit, the second section provides 33.6 GPM (127 liter/min.) to the outrigger or winch boost circuits.

An Eaton 1.65 cu. in. (27.04 cu. cm.) per revolution heavy duty power steering pump operating at full load RPM of 3120 RPM, provides 8 GPM (30.5 liter/min.) to steering circuit.

LOAD RATINGS - PCSA CLASS 10-208

With 8000 lbs. counterweight

RATED LOADS IN POUNDS ON OUTRIGGERS																		
POWERED BOOM LENGTH IN FEET - MANUAL RETRACTED																		
BOOM HEIGHT	34 FT.		48 FT.		45 FT.		55 FT.		85 FT.		75 FT.		84.88 FT.		BOOM HEIGHT			
	SIDE	REAR	SIDE	REAR	SIDE	REAR	SIDE	REAR	SIDE	REAR	SIDE	REAR	SIDE	REAR				
10	84	10000	70	8200	72	8100	78	7300							10			
12	82	8800	67	8150	78	7850	74	8000	77	8000					12			
15	56	7100	62	7100	65	7000	71	8200	74	5490	73	4720			15			
20	43	5400	53	5400	58	5400	63	9300	68	4730	73	3880	79	3470	20			
25	29	4200	43	4200	54	4100	58	4170	65	4080	69	5400	77	2990	25			
30			30	5370	48	3380	52	3350	59	3540	65	3000	68	2810	30			
35					28	2710	2710	43	2710	2710	54	2710	2710	60	2640	35		
40								47	2080	2120	48	2080	2120	55	2080	2120	40	
45								28	1810	1880	41	1810	1880	50	1810	1880	45	
50											34	1300	1370	45	1300	1370	50	
55											28	1050	1130	39	1050	1130	55	
60														32	840	920	60	
65														22	890	780	65	
70															28	560	630	70
75															28	450	520	75
80																		80
85																		85

LOAD RATINGS IN POUNDS WITH OUTRIGGERS EXTENDED															
PINNED SECTION EXTENDED			LATTICE EXTENSION WITH PINNED SECTION RETRACTED			LATTICE EXTENSION WITH PINNED SECTION EXTENDED			LATTICE EXTENSION WITH PINNED SECTION EXTENDED			LATTICE EXTENSION WITH PINNED SECTION EXTENDED			
BOOM HEIGHT	RATED LOAD IN POUNDS		RATED LOAD IN POUNDS		RATED LOAD IN POUNDS		RATED LOAD IN POUNDS		RATED LOAD IN POUNDS		RATED LOAD IN POUNDS		RATED LOAD IN POUNDS		BOOM HEIGHT
	SIDE	REAR	SIDE	REAR	SIDE	REAR	SIDE	REAR	SIDE	REAR	SIDE	REAR	SIDE	REAR	
25	77	2150	23	78	1700	35	78	1840	23						25
30	74	1950	30	78	1580	30	78	1510	30						30
35	72	1780	39	73	1450	35	73	1390	39	78	1100	35	78	1100	35
40	68	1610	40	71	1350	40	71	1290	40	74	880	40	76	1070	40
45	65	1470	45	68	1280	45	68	1200	45	72	630	45	73	980	45
50	63	1340	50	68	1180	50	68	1150	50	71	830	50	71	830	50
55	60	1220	55	63	1110	55	63	1040	55	68	970	55	69	880	55
60	57	1080	60	60	1020	60	60	980	60	64	590	60	67	790	60
65	53	850	65	57	890	65	57	810	65	64	540	65	65	730	65
70	50	720	70	54	780	70	54	680	70	62	520	70	63	680	70
75	48	690	75	51	640	75	51	570	75	60	500	75	60	630	75
80	46	670	80	48	550	80	48	470	80	57	490	80	56	590	80
85	38	430	85	44	480	85	44	390	85	53	460	85	58	520	85
90	35	380	90	40	390	90	40	310	90	52	440	90	53	480	90
100	18	240	100	32	270	100	32	190	100	47	370	100	47	240	100
110	18	-	110	18	-	110	18	-	110	41	220	110	41	-	110
120	34	-	120	34	-	120	34	-	120	34	-	120	34	-	120

NOTE:

- WHEN BOOM IS NOT FULLY EXTENDED, USE ONLY BOOM ANGLES, NOT OPERATING RADIUS TO DETERMINE LOAD RATING.
- FOR BOOM ANGLES NOT SHOWN, USE RATING OF NEXT LOWER BOOM ANGLE.
- FOR BUCKET RATINGS ON 60 FT. EXTENSION, DEDUCT 20% FROM LOAD RATINGS.

WARNING:

A TIPPING CONDITION WILL OCCUR WITH OR WITHOUT HOOK BLOCKS WITH 35 FT. OR 60 FT. BOOM EXTENSION EXTENDED, IF MAXIMUM OPERATING RADIUS SHOWN WITH LOAD RATING FOR RESPECTIVE OPERATING CONFIGURATION IS EXCEEDED.

DEDUCTIONS TO BE MADE FROM LOAD RATINGS IN POUNDS					
DESCRIPTION	WITHIN HOOK BLOCK OR BOOM POINT	HOOK BLOCK ON POWERED BOOM POINT			
		8.5 - 30 TON	48-30 TON	8.5 - 28 TON WITH AUXILIARY SHEAVE	45-30 TON WITH AUXILIARY SHEAVE
HOISTING LOAD FROM POWERED BOOM	HOOK BLOCK WEIGHT	580	930	740	1160
	35 FT. LATTICE EXTENSION	700	1100	890	1290
	55 TON BALL	3650	3900	3700	4000
HOISTING LOAD FROM EXTENSION	35 FT. TELESCOPIC LATTICE EXTENSION	4700	9050	4850	5200
	55 TON BALL	6000	6350	6150	6500
	85 TON BALL	700	1000	850	1200
35 FT. TELESCOPIC LATTICE EXTENSION	55 TON BALL	3500	5650	5650	6000
	85 TON BALL	6850	7000	6600	7150
	28 TON BALL	7950	8350	8100	8500
60 FT. TELESCOPIC LATTICE EXTENSION	55 TON BALL	3500	3850	3450	4000
	85 TON BALL	7100	7450	7250	7800
	28 TON BALL	8900	9250	9050	9600
85 FT. TELESCOPIC LATTICE EXTENSION	55 TON BALL	270	600	890	950
	85 TON BALL	590	850	1150	1250
	85 TON BALL	270	600	890	950
90 FT. TELESCOPIC LATTICE EXTENSION	55 TON BALL	270	600	890	950
	85 TON BALL	590	850	1150	1250
	85 TON BALL	270	600	890	950

LOAD RATINGS APPLY ONLY TO P&H SUPPLIED EQUIPMENT.

MAIN HOIST REEVEING										
3/4 DIA. WIRE ROPE BREAKING STRENGTH 38,800 LBS. 6 X 25 FW IWRC										
PART OF LINE	1	2	3	4	5	6	7	8	9	10
MAXIMUM LOAD	11000	72000	33000	14800	30000	16000	77000	8000	19000	100000
AUXILIARY HOIST REEVEING										
3/8 DIA. WIRE ROPE BREAKING STRENGTH 51,800 LBS. 8 X 19 IWRC										
PART OF LINE	1	2	3	4	5	6	7	8	9	10
MAXIMUM LOAD	10000	20000	30000	40000	50000	60000	10000	80000	80000	100000

DEFINITIONS:

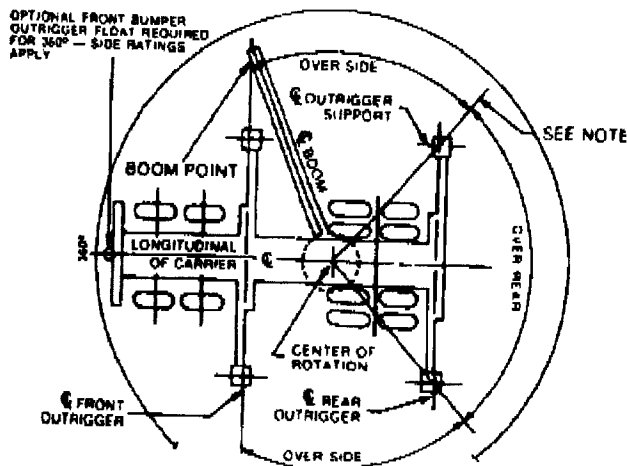
1. OPERATING RADIUS IS THE HORIZONTAL DISTANCE FROM THE AXIS OF ROTATION BEFORE LOADING TO THE CENTER OF THE VERTICAL HOIST LINE OR TACKLE WITH LOAD APPLIED.

2. LOADED BOOM ANGLE, AS SHOWN IN COLUMN HEADED BY Δ, IS THE INCLUDED ANGLE BETWEEN THE HORIZONTAL AND LONGITUDINAL AXES OF THE BOOM BASE AFTER LIFTING RATED LOAD AT RATED RADIUS.

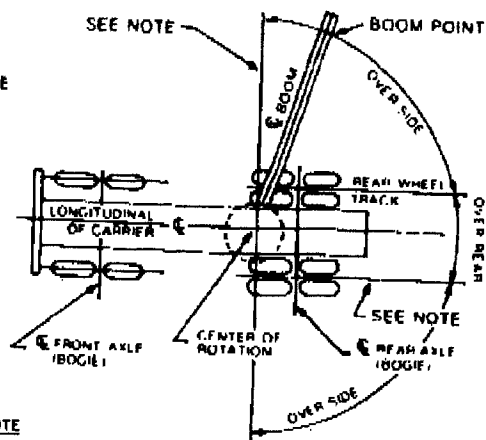
	WEIGHT DISTRIBUTION-FOR PUBLICATION					
	POUNDS			KILOGRAMS		
	GROSS	FRONT	REAR	GROSS	FRONT	REAR
BASIC CARRIER						
BASIC UPPER	33457	18008	15448	15178	8308	8368
	34447	14488	4993	2468	203	2265
STANDARD OPTIONS:						
110 FT. 45CCT BOOM						
BOOM HOIST CYL INST.	17556	13400				
8000 LB COUNTERWEIGHT	2065	341	4415	7963	5960	2003
MAIN WINCH MOUNT 1581	808	3226	1241	936	472	464
MAIN WINCH ROPE 75 IN DIA X 515 FT.	3280	301	1381	3636	1463	8099
AUX WINCH OR 1380 LB COUNTERWEIGHT	536	149	685	490	136	625
CATERPILLAR 320BT ENGINE	1080	437	1516	243	68	311
FRONT TIRES & RIMS -14 15.00X22.5 18 PR	3648	3618	28	1654	1641	688
REAR TIRES & RIMS -18 11.00X20 14 PR	1237	1237	0	561	561	0
TWO POSITION SWING LOCK	2037	0	2037	824	0	0
	9	1	8	4	0	4
BASIC MACHINE	7657	30380	45778	34545	13780	20765
ADJUSTMENTS FOR OPTIONS:						
BASIC MACHINE						
REMOVABLE 7510 LB COUNTERWEIGHT	7527	3048	-10573	-3414	1382	4796
18 FRONT DIESEL 6L711A ENGINE	642	681	-39	291	309	18
FRONT TIRES & RIMS -14 15.00X22.5 18 PR	103	103	0	47	47	0
REAR TIRES & RIMS -18 11.00X20 14 PR	170	0	170	77	0	77
MULTI POSITION SWING LOCK	33	7	26	15	3	12
ADDITIONS FOR OPTIONS						
ATTACHMENTS						
35 FT. BOOM EXTENSION	1735	1353	387	787	614	173
35 FT - 60 FT BOOM EXTENSION	2899	2150	750	1315	875	340
BOOM EXTENSION OFFSET INST.	201	331	-131	91	150	-59
AUXILIARY SHEAVE	152	267	-17	69	121	52
45 TON 4 SHEAVE HOOK BLOCK	499	1429	629	408	648	-240
18 TON 5 SHEAVE HOOK BLOCK	948	1502	557	429	681	-752
20 TON 1 SHEAVE HOOK BLOCK	580	184	764	283	-83	346
15 TON BALL HOOK	265	-84	348	120	38	158
AUX WINCH ROPE .75 IN DIA X 460 FT.	487	-197	685	221	-88	310
AUX WINCH ROPE .625 IN DIA X 460 FT.	730	298	1025	331	-134	465
UPPER						
INDEPENDENT MAIN & AUX WINCH	440	-12	427	86	5	101
AUX WINCH PUMING & CONTROLS	82	-12	94	37	-6	43
DIESEL HEATER	53	1	54	24	0	24
PROPANE HEATER	55	-1	56	25	0	25
PROPANE TANK FULL	49	-2	51	22	-1	23
FLOOD LIGHTS	35	21	15	16	9	7
CARRIER						
HYDRAULIC FRONT STABILIZER	485	671	-206	211	304	-93
PINLE HOOK	26	-10	37	12	-5	17
AIR DRYER	37	19	18	17	9	8

areas of operation

ON OUTRIGGERS



ON RUBBER



NOTE
 THESE LINES DETERMINE ANY LIMITING POSITION OF ANY LOAD FOR OPERATION WITHIN WORKING AREAS

LOAD RATINGS ON TIRES

With 8,000 lb. counterweight

8,000 lb. counterweight
with 7,525 lb. weight removed

LOAD RATINGS IN POUNDS					
OPERATING RADIUS FT.	11.00 X 20-14 PR TIRES 12.00 X 20-16 PR TIRES				OPERATING RADIUS FT.
	STATIONARY		TRAVEL RATINGS OVER REAR		
	OVER REAR	OVER SIDE	CREEP	2.5 MPH	
10	35200	25900	35200	28600	10
12	30500	22000	30500	25500	12
15	26100	15200	26100	22300	15
20	20900	8700	20900	17700	20
25	14800	5200	14800	14400	25
30	10700	3000			30
35	7900				35
40	5900				40
45	4300				45
50	3100				50

LOAD RATINGS IN POUNDS					
OPERATING RADIUS FT.	11.00 X 20-14 PR TIRES 12.00 X 20-16 PR TIRES				OPERATING RADIUS FT.
	STATIONARY		TRAVEL RATINGS OVER REAR		
	OVER REAR	OVER SIDE	CREEP	2.5 MPH	
10	31200	20300	31200	26700	10
12	27200	14100	27200	23100	12
15	23500	8800	23500	19800	15
20	16500	4200	16500	15700	20
25	11100	1800	11100	11100	25
30	7700				30
35	5400				35
40	3700				40
45	2400				45
50	1400				50

WARNINGS:

1. CRANE LOAD RATINGS WITHOUT OUTRIGGERS DEPENDS ON TIRE CAPACITY AND CONDITION OF TIRES INFLATED PER TABLE.
2. WHEN TRANSPORTING A LOAD, MACHINE MUST BE ON FIRM, LEVEL SURFACE WITH MECHANICAL HOUSELOCK ENGAGED. THE LOAD MUST BE CENTERED OVER REAR OF MACHINE AND RESTRAINED FROM SWINGING. SEE AREAS OF OPERATION PLATE FOR WORKING RANGES.
3. LIFT LOADS WITH MINIMUM BOOM LENGTH; DO NOT EXCEED 65 FEET BOOM LENGTH WHEN LIFTING ON TIRES.
4. DO NOT ATTEMPT LIFTS ON TIRES WITH EXTENSION ERECTED.
5. MAXIMUM RECOMMENDED BOOM ANGLE ON TIRES IS 66° WITHOUT LOAD.

DEDUCTIONS TO BE MADE FROM LOAD RATINGS IN POUNDS					
DESCRIPTION		HOOK BLOCK ON POWERED BOOM POINT			
		8.5-20 TON	45-50 TON	8.5-20 TON WITH AUX SHEAVE	45-50 TON WITH AUX SHEAVE
HOOK BLOCK WEIGHT		580	950	740	1100
STOWED LATTICE EXT.	35 FT. BOOM EXTENSION	900	1300	1100	1450
	60 FT. TELESCOPIC BOOM EXTENSION	1100	1450	1250	1600

NOTE: LOAD DEDUCTIONS APPLY ONLY TO P&H SUPPLIED EQUIPMENT.

DEFINITIONS:

1. CREEP IS MOTION FOR LESS THAN 200 FT. IN A 30 MINUTE PERIOD AND NOT EXCEEDING 1 M.P.H.

INFORMATION:

1. DEDUCTIONS MUST BE MADE FROM RATED LOADS FOR STOWED LATTICE EXTENSION, OPTIONAL ATTACHMENTS, HOOKS AND HOOKBLOCKS. (SEE DEDUCTION CHART). WEIGHTS OF SLINGS, AND ALL OTHER LOAD HANDLING DEVICES SHALL BE CONSIDERED A PART OF THE LOAD.
2. RATINGS ABOVE THE HEAVY LINE ARE BASED ON STRUCTURAL COMPETENCE AND NOT ON MACHINE STABILITY.
3. IT IS RECOMMENDED THAT OUTRIGGERS BE EXTENDED AS FAR AS POSSIBLE AND CLEAR OF GROUND WHEN LIFTING ON TIRES.
4. STABILITY RATINGS DO NOT EXCEED 75% OF TIPPING LOADS.

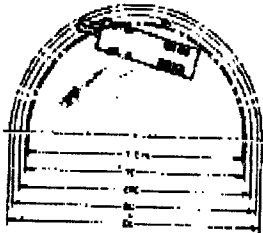
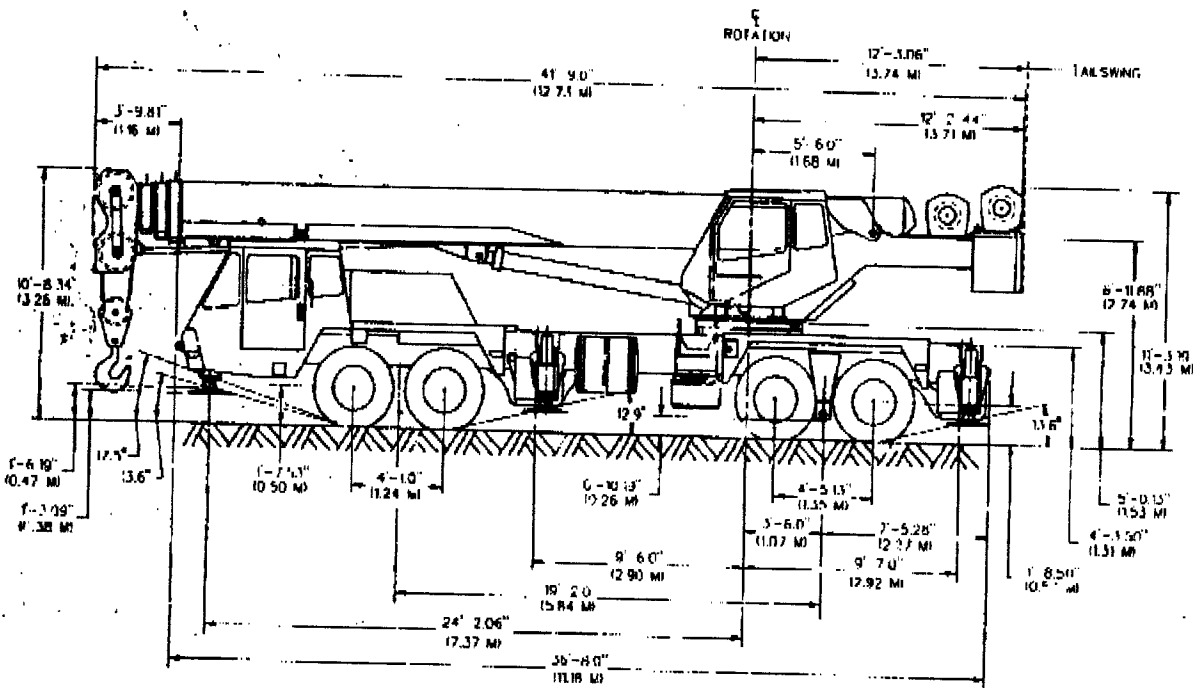
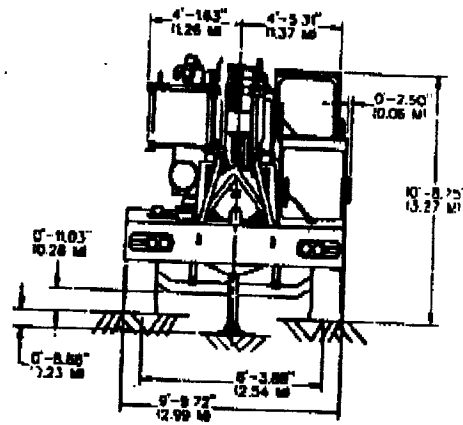
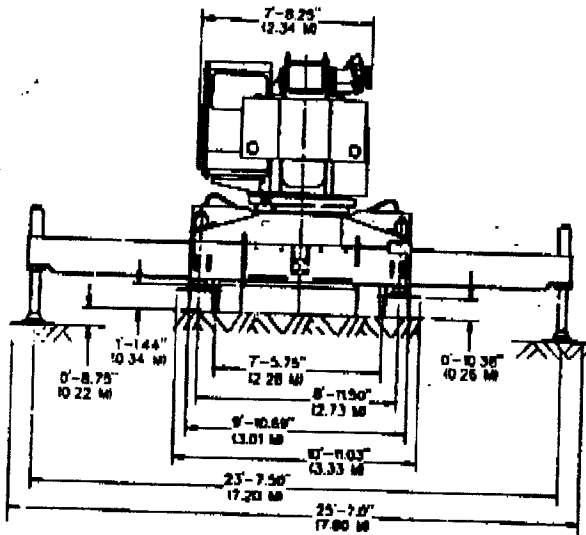
NOTES:

OPERATION OF THIS EQUIPMENT IN EXCESS OF RATED LOADS AND DISREGARD OF INSTRUCTIONS IS AN UNSAFE PRACTICE AND WILL RESULT IN DENIAL OF WARRANTY CLAIMS.

TIRE INFLATION			
SIZE	STATIC PSI	CREEP PSI	2.5 MPH PSI
11.00X20-14 PR	110	110	110
12.00X20-16 PR	115	115	115
15.0RX22.5-18PR	130	130	130
16.5RX22.0-18PR	125	125	125

DIMENSIONS

NOTE: ALL DIMENSIONS ARE IN FEET AND INCHES UNLESS OTHERWISE SPECIFIED. DIMENSIONS ARE GIVEN TO THE CENTERLINE UNLESS OTHERWISE SPECIFIED. DIMENSIONS ARE GIVEN TO THE CENTERLINE UNLESS OTHERWISE SPECIFIED.



	1050 X 225	1050 X 225
NET WEIGHT	26000 LB	26000 LB
NET CAPACITY	25000 LB	25000 LB
NET CLEARANCE	25000 LB	25000 LB
NET WEIGHT	26000 LB	26000 LB
NET CAPACITY	25000 LB	25000 LB
NET CLEARANCE	25000 LB	25000 LB

MORGAN/COLTON EQUIP. CO.
 14480 ALONDRA BLVD.
 LA MIRADA, CA. 90638
 213-868-4754 - 714-521-6410

	1050 X 225	1050 X 225
NET WEIGHT	26000 LB	26000 LB
NET CAPACITY	25000 LB	25000 LB
NET CLEARANCE	25000 LB	25000 LB
NET WEIGHT	26000 LB	26000 LB
NET CAPACITY	25000 LB	25000 LB
NET CLEARANCE	25000 LB	25000 LB



NOTE: All designs, specifications and components of the equipment described above are subject to change at the manufacturer's sole discretion at any time without advance notice. Data published herein is informational in nature and shall not be construed to warrant suitability of the machine for any particular purpose as performance may vary with the conditions encountered. The only warranty applicable is our standard written warranty for this machine. It is manufactured and sold in conformance with U.S. Department of Commerce Commercial Standard CS-90-56.

