

# FLAT TOP TOWER CRANE

**Specifications:**

- ▶ Max jib length: 275.6 ft
- ▶ Capacity at max length: 7,496 lbs
- ▶ Max capacity: 70,548 lbs

**WORKS FOR YOU.™**

# KEY

## Zeichenerklärung · Légende · Leyenda · Legenda



Hoisting · Heben · Levage · Elevación · Sollevamento



Trolleying · Katzfahren · Distribution · Distribución · Traslazione carrello



Slewing · Schwenken · Orientation · Orientació · Rotazione



Travelling · Schienenfahren · Translation · Traslación · Traslazione



Directive on noise level · Richtlinie für den Schall-Leistungspegel · Directive sur le niveau acoustique · Directiva sobre el nivel acustico · Direttiva sul livello acustico



Consult us · Auf Anfrage · Nous consulter · Consultarnos · Consultateci



Power requirements · Geforderte Stromstärke · Puissance totale nécessaire · Potencia necesaria · Potenza totale richiesta



Power supply · Stromversorgung · Alimentation · Alimentación · Alimentazione



In service · In Betrieb · En service · En servicio · In servizio



Out of service · Außer Betrieb · Hors service · Fuera de servicio · Fuori servizio



Max. under hook height · Höchste Hakenhöhe · Hauteur maxi. sous crochet · Maxima altura bajo gancho · Altezza max. sotto gancho



Without load, without ballast, max. jib and max. height · Ohne Last und Ballast, mit Maximalausleger und Maximalhöhe · A vide, sans lest, avec flèche et hauteur maximum · Sin carga, sin lastre, con pluma y altura máxima · A vuoto, senza zavorra, braccio max., altezza max.



Counterweight · Gegengewicht · Lest de contre-flèche · Lastre de contra flecha · Zavorra controbraccio

**C25**

FEM 1004 Out of service wind condition · FEM 1004 Windverhältnisse im Außerbetriebszustand · FEM 1004 Conditions de vent hors service · FEM 1004 Condiciones de viento fuera de servicio · FEM 1004 Condizioni del vento in fuori servizio

# CONTENTS

**CTT 721-32 HD23**


**Inhalt · Contenu · Contenido · Indice**

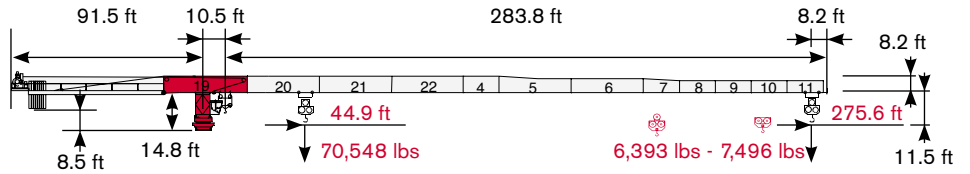
Page · Seite · Page · Pàgina · Pagina:

|   |          |
|---|----------|
| <b>Load Diagram · Lastkurven · Courbes de charges · Curvas de cargas · Diagramma di portata</b> .....                                 | <b>4</b> |
| <b>Tower · Turm · Tour · Torre · Torre</b> .....  | <b>6</b> |
| <b>Other configurations · Aufstellmöglichkeiten · Autres Implantations</b><br><b>Otras Implantaciones · Altre Installazioni</b> ..... | <b>7</b> |
| <b>Mechanisms · Antriebe · Mécanismes · Mecanismos · Meccanismi</b> .....   | <b>8</b> |
| <b>Transportation · Transport · Transportation · Trasporto</b> .....  | <b>9</b> |

# LOAD DIAGRAM


## Lastkurven · Courbes de charges · Curvas de cargas · Diagramma di portata

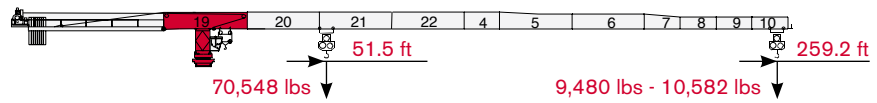

  
 D2 (11,685 lbs) A1 (7871 lbs)
   
 94 AFC 160 3 5



62.3 ft 78.7 ft 95.1 ft 111.6 ft 128 ft 144.4 ft 160.8 ft 177.2 ft 193.6 ft 210 ft 226.4 ft 242.8 ft 259.2 ft 275.6 ft


|   |              |         |     |        |        |        |        |        |        |        |        |        |        |        |       |       |       |
|---|--------------|---------|-----|--------|--------|--------|--------|--------|--------|--------|--------|--------|--------|--------|-------|-------|-------|
|  | 35,274 lbs → | 86 ft   | lbs | 35,274 | 35,274 | 31,416 | 26,037 | 22,046 | 18,960 | 16,513 | 14,506 | 12,831 | 11,442 | 10,229 | 9,193 | 8,289 | 7,496 |
|  | 35,274 lbs → | 83.3 ft | lbs | 35,274 | 35,274 | 30,093 | 24,780 | 20,812 | 17,747 | 15,322 | 13,338 | 11,685 | 10,296 | 9,105  | 8,091 | 7,187 | 6,393 |
|  | 70,548 lbs → | 44.9 ft | lbs | 49,163 | 37,655 | 30,093 | 24,780 | 20,812 | 17,747 | 15,322 | 13,338 | 11,685 | 10,296 | 9,105  | 8,091 | 7,187 | 6,393 |

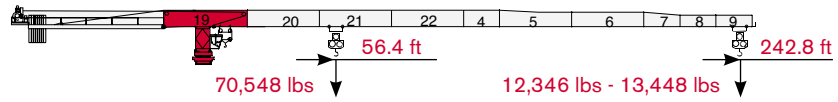

  
 D2 (11,685 lbs) A1 (7871 lbs)
   
 94 AFC 160 3 5



62.3 ft 78.7 ft 95.1 ft 111.6 ft 128 ft 144.4 ft 160.8 ft 177.2 ft 193.6 ft 210 ft 226.4 ft 242.8 ft 259.2 ft


|   |              |         |     |        |        |        |        |        |        |        |        |        |        |        |        |        |
|---|--------------|---------|-----|--------|--------|--------|--------|--------|--------|--------|--------|--------|--------|--------|--------|--------|
|  | 35,274 lbs → | 99.1 ft | lbs | 35,274 | 35,274 | 35,274 | 30,777 | 26,235 | 22,708 | 19,930 | 17,637 | 15,763 | 14,154 | 12,787 | 11,618 | 10,582 |
|  | 35,274 lbs → | 95.8 ft | lbs | 35,274 | 35,274 | 35,274 | 29,520 | 25,022 | 21,517 | 18,761 | 16,491 | 14,617 | 13,029 | 11,685 | 10,494 | 9,480  |
|  | 70,548 lbs → | 51.5 ft | lbs | 57,298 | 44,181 | 35,583 | 29,520 | 25,022 | 21,517 | 18,761 | 16,491 | 14,617 | 13,029 | 11,685 | 10,494 | 9,480  |

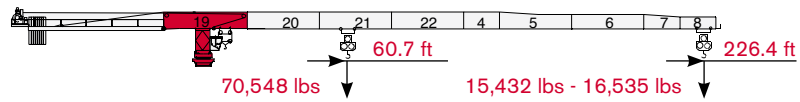

  
 D2 (11,685 lbs) A1 (7871 lbs)
   
 94 AFC 160 3 5



62.3 ft 78.7 ft 95.1 ft 111.6 ft 128 ft 144.4 ft 160.8 ft 177.2 ft 193.6 ft 210 ft 226.4 ft 242.8 ft

|   |              |          |     |        |        |        |        |        |        |        |        |        |        |        |        |
|---|--------------|----------|-----|--------|--------|--------|--------|--------|--------|--------|--------|--------|--------|--------|--------|
|  | 35,274 lbs → | 108.6 ft | lbs | 35,274 | 35,274 | 35,274 | 34,260 | 29,321 | 25,507 | 22,465 | 19,996 | 17,946 | 16,204 | 14,727 | 13,448 |
|  | 35,274 lbs → | 105.3 ft | lbs | 35,274 | 35,274 | 35,274 | 33,025 | 28,109 | 24,317 | 21,319 | 18,850 | 16,821 | 15,102 | 13,625 | 12,346 |
|  | 70,548 lbs → | 56.4 ft  | lbs | 63,207 | 48,943 | 39,617 | 33,025 | 28,109 | 24,317 | 21,319 | 18,850 | 16,821 | 15,102 | 13,625 | 12,346 |




  
 D2 (11,685 lbs) A1 (7871 lbs)
   
 94 AFC 160 5 3



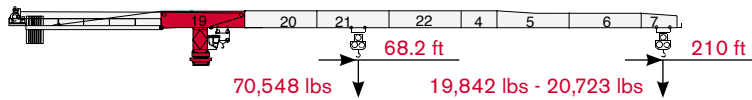
62.3 ft 78.7 ft 95.1 ft 111.6 ft 128 ft 144.4 ft 160.8 ft 177.2 ft 193.6 ft 210 ft 226.4 ft

|   |              |          |     |        |        |        |        |        |        |        |        |        |        |        |
|---|--------------|----------|-----|--------|--------|--------|--------|--------|--------|--------|--------|--------|--------|--------|
|  | 35,274 lbs → | 117.8 ft | lbs | 35,274 | 35,274 | 35,274 | 35,274 | 32,165 | 28,087 | 24,824 | 22,179 | 19,974 | 18,122 | 16,535 |
|  | 35,274 lbs → | 114.2 ft | lbs | 35,274 | 35,274 | 35,274 | 35,274 | 30,975 | 26,918 | 23,678 | 21,054 | 18,850 | 17,020 | 15,432 |
|  | 70,548 lbs → | 60.7 ft  | lbs | 68,630 | 53,330 | 43,321 | 36,244 | 30,975 | 26,918 | 23,678 | 21,054 | 18,850 | 17,020 | 15,432 |

# CTT 721-32 HD23





  
 D2 (11,685 lbs) A1 (7871 lbs)

|            |   |   |
|------------|---|---|
| 94 AFC 160 | 5 | 3 |
|------------|---|---|

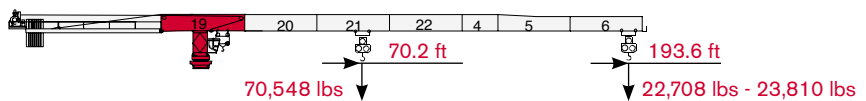


62.3 ft 78.7 ft 95.1 ft 111.6 ft 128 ft 144.4 ft 160.8 ft 177.2 ft 193.6 ft 210 ft

|  |          |     |        |        |        |        |        |        |        |        |        |        |        |  |  |  |  |  |
|--|----------|-----|--------|--------|--------|--------|--------|--------|--------|--------|--------|--------|--------|--|--|--|--|--|
|  35,274 lbs → | 131.2 ft | lbs | 35,274 | 35,274 | 35,274 | 35,274 | 35,274 | 35,274 | 31,769 | 28,153 | 25,221 | 22,774 | 20,723 |  |  |  |  |  |
|  35,274 lbs → | 128.6 ft | lbs | 35,274 | 35,274 | 35,274 | 35,274 | 35,274 | 35,274 | 30,931 | 27,315 | 24,361 | 21,914 | 19,842 |  |  |  |  |  |
|  70,548 lbs → | 68.2 ft  | lbs | 70,548 | 60,517 | 49,295 | 41,381 | 35,494 | 30,931 | 27,315 | 24,361 | 21,914 | 19,842 |        |  |  |  |  |  |





  
 D2 (11,685 lbs) A1 (7871 lbs)

|            |   |   |
|------------|---|---|
| 94 AFC 160 | 1 | 7 |
|------------|---|---|

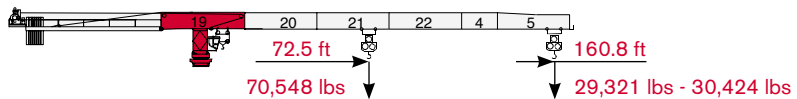


62.3 ft 78.7 ft 95.1 ft 111.6 ft 128 ft 144.4 ft 160.8 ft 177.2 ft 193.6 ft

|  |          |     |        |        |        |        |        |        |        |        |        |        |  |  |  |  |  |  |
|--|----------|-----|--------|--------|--------|--------|--------|--------|--------|--------|--------|--------|--|--|--|--|--|--|
|  35,274 lbs → | 136.5 ft | lbs | 35,274 | 35,274 | 35,274 | 35,274 | 35,274 | 35,274 | 33,135 | 29,388 | 26,345 | 23,810 |  |  |  |  |  |  |
|  35,274 lbs → | 132.6 ft | lbs | 35,274 | 35,274 | 35,274 | 35,274 | 35,274 | 35,274 | 32,011 | 28,263 | 25,243 | 22,708 |  |  |  |  |  |  |
|  70,548 lbs → | 70.2 ft  | lbs | 70,548 | 62,479 | 50,927 | 42,770 | 36,685 | 32,011 | 28,263 | 25,243 | 22,708 |        |  |  |  |  |  |  |





  
 D2 (11,685 lbs) A1 (7871 lbs)

|            |   |   |
|------------|---|---|
| 94 AFC 160 | 1 | 6 |
|------------|---|---|

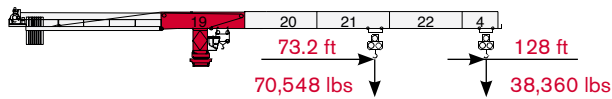


62.3 ft 78.7 ft 95.1 ft 111.6 ft 128 ft 144.4 ft 160.8 ft

|  |          |     |        |        |        |        |        |        |        |        |  |  |  |  |  |  |  |  |
|--|----------|-----|--------|--------|--------|--------|--------|--------|--------|--------|--|--|--|--|--|--|--|--|
|  35,274 lbs → | 140.8 ft | lbs | 35,274 | 35,274 | 35,274 | 35,274 | 35,274 | 35,274 | 34,282 | 30,424 |  |  |  |  |  |  |  |  |
|  35,274 lbs → | 136.8 ft | lbs | 35,274 | 35,274 | 35,274 | 35,274 | 35,274 | 35,274 | 33,180 | 29,321 |  |  |  |  |  |  |  |  |
|  70,548 lbs → | 72.5 ft  | lbs | 70,548 | 64,618 | 52,690 | 44,269 | 38,008 | 33,180 | 29,321 |        |  |  |  |  |  |  |  |  |



  
 D2 (11,685 lbs) A1 (7871 lbs)

|            |   |   |
|------------|---|---|
| 94 AFC 160 | 0 | 6 |
|------------|---|---|



62.3 ft 78.7 ft 95.1 ft 111.6 ft 128 ft


|  |          |     |        |        |        |        |        |  |  |  |  |  |  |  |  |  |  |  |
|--|----------|-----|--------|--------|--------|--------|--------|--|--|--|--|--|--|--|--|--|--|--|
|  35,274 lbs → | 124.7 ft | lbs | 35,274 | 35,274 | 35,274 | 35,274 | 35,274 |  |  |  |  |  |  |  |  |  |  |  |
|  35,274 lbs → | 124.7 ft | lbs | 35,274 | 35,274 | 35,274 | 35,274 | 35,274 |  |  |  |  |  |  |  |  |  |  |  |
|  70,548 lbs → | 73.2 ft  | lbs | 70,548 | 65,191 | 53,153 | 44,666 | 38,360 |  |  |  |  |  |  |  |  |  |  |  |

# TOWER


Turn · Tour · Torre · Torre

Standard Configurations · Standardkonfiguration · Standard Implantations · Implantaciones Standard · Installazioni Standard


Tower: HD23 & Basement: R2

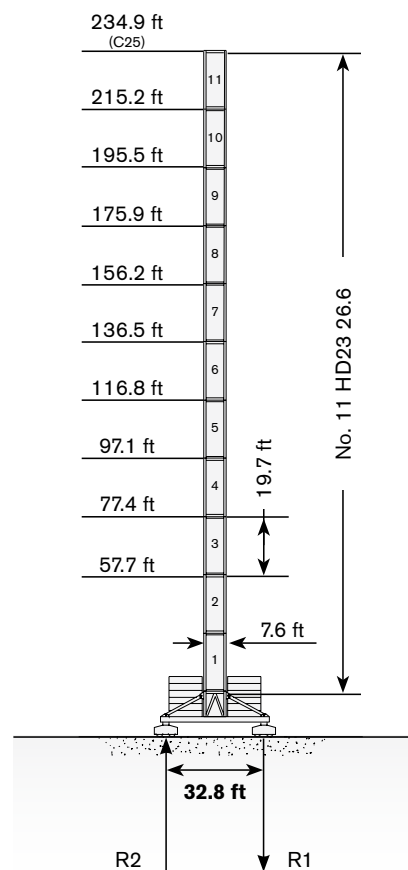
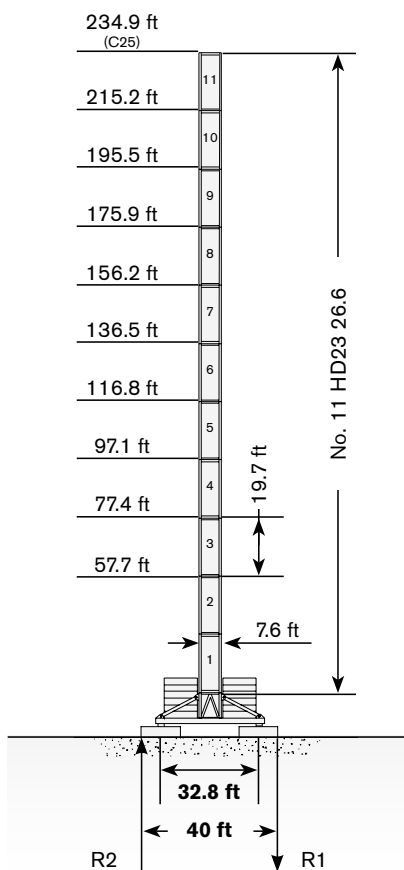
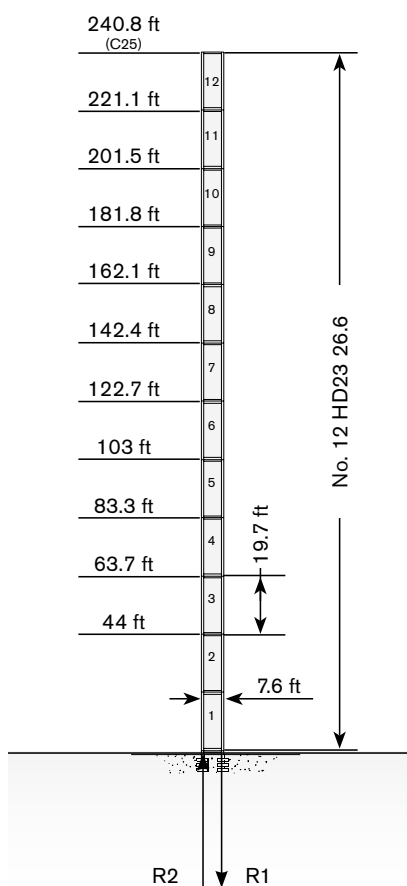
|   | ●          | ◊        |
|---|------------|----------|
| R1  | -3743 kN   | -5255 kN |
| R2  | 2510 kN    | 4316 kN  |
|  | 1540,65 kN |          |

Tower: HD23 & Basement: FP6

|   | ●        | ◊        |
|---|----------|----------|
| R1  | -1598 kN | -1823 kN |
| R2  | -344 kN  | -120 kN  |
|  | 1735 kN  |          |

Tower: HD23 & Basement: T6

|   | ●        | ◊        |
|---|----------|----------|
| R1  | -1684 kN | -1823 kN |
| R2  | -406 kN  | -190 kN  |
|  | 1735 kN  |          |



Max. under hook height · Höchste Hakenhöhe · Hauteur maxi. sous crochet · Maxima altura bajo gancho · Altezza max. sotto gancio

Different heights and tower combinations are available; please consult us · Andere Höhen und Turmkombinationen auf Anfrage · Différentes hauteurs et combinaisons de tour sont disponibles; nous consulter · Hay diferentes alturas y combinaciones de torre disponibles. Consúltenos · Altezze diverse e combinazioni di torre sono disponibili; consultateci

# TOWER

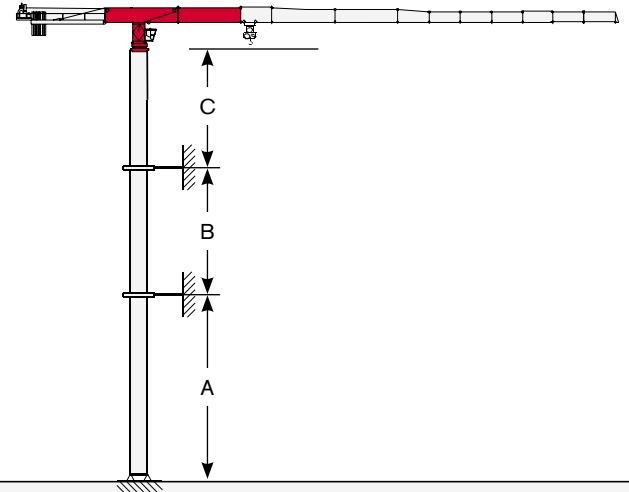
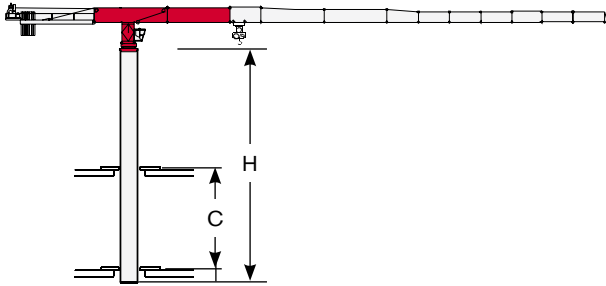
**CTT 721-32 HD23**

**Turm · Tour · Torre · Torre**

**Other configurations · Aufstellmöglichkeiten ·  
Autres Implantations · Otras Implantaciones · Altre Installazioni**

Bottom climbing crane · Kletterkran im Gebäude · Télescopage sur dalles · Telescopage grúa trepadora · Gru climbing

Crane tied to the structure · Geankerter Kran · Grue ancrée · Grúa anclada · Gru ancorata



**Tower: HD23-26**

| C min   | H max    |
|---------|----------|
| 45.9 ft | 157.5 ft |
| 52.5 ft | 177.2 ft |
| 59.1 ft | 196.9 ft |
| 68.9 ft | 216.5 ft |

**Tower: HD23-26**

|   | min      | max      |
|---|----------|----------|
| A | 137.8 ft | 196.9 ft |
| B | 98.4 ft  | 118.1 ft |
| C | 118.1 ft |          |

# MECHANISMS

Antriebe · Mécanismes · Mecanismos · Meccanismi






Power supply · Stromversorgung ·

Alimentation · Suministro eléctrico · Alimentazione

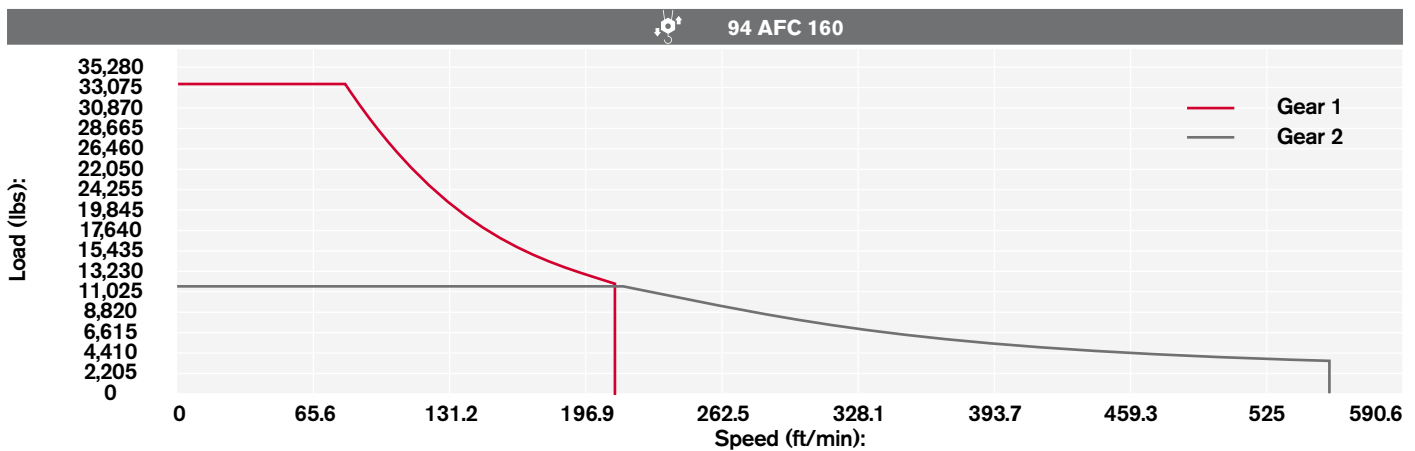
|   |               |  |   |   |
|---|---------------|--|---|---|
|  | 94 AFC 160 D2 |  200 kVA* |  400V - 50Hz / 460V - 60Hz |  2000/14/CE modificata |
|---|---------------|--|---|---|

\* Crane without travelling equipment – Three movements simultaneous at 90% · Krane ohne Schienenfahren – Drei gleichzeitige Bewegungen mit 90% · Grue sans translation – Trois mouvements simultanés à 90% · Grúa sin traslación – Tres movimientos contemporáneos hechos al 90% · Gru senza traslazione – Tre movimenti contemporanei al 90%



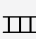
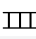
## Hoisting · Heben · Levage · Elevación · Sollevamento

|   |                             |   | lbs    | ft/min    |  | kW |  |
|---|-----------------------------|---|--------|-----------|---|----|---|
|  | 94 AFC 160 D2<br>(Vector 2) |  | 35,274 | 0 → 82    | 1°  | 94 | 1,568.3 ft  |
|   |                             |   | 13,228 | 0 → 206.7 |   |    |   |
|   |                             |   | 12,346 | 0 → 223.1 | 2°  |    |   |
|   |                             |   | 3,307  | 0 → 557.8 |   |    |   |
|   |                             |  | 70,548 | 0 → 42.7  | 1°  |    |   |
|   |                             |   | 26,455 | 0 → 105   | 2°  |    |   |
|   |                             |   | 24,692 | 0 → 111.6 |   |    |   |
|   |                             |   | 6,614  | 0 → 278.9 |   |    |   |

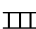
## Hoisting Speed · Heben Geschwindigkeit · Vitesse de Levage · Velocidad de Elevación · Velocità' di Sollevamento



## Additional Specifications · Weitere Leistungsdaten · Spécifications additionnelles · Otras prestaciones · Altre movimentazioni

|   |               |  |              |
|---|---------------|--|--------------|
|  | DVF 5 15      | 0 → 328.1 m/min  | 15 kW        |
|  | SCC 2 2 132 P | 0,73 r.p.m.  | 2 x 18 kW    |
|  | TSR 2RG 4M8   | 39.4 → 78.7 ft/min (50 Hz)<br>45.9 → 91.9 ft/min (60 Hz) | 4 x 59 ft·lb |
|  | TVF 4RT 4M9   | 0 → 68.9 ft/min  | 4 x 9 kW     |

Tower height max.

|   |             | T6        |
|---|-------------|-----------|
|  | TSR 2RG 4M8 | 175.9 ft  |
|  | TVF 4RT 4M9 | >175.9 ft |




# TRANSPORTATION

## CTT 721-32 HD23

Transport · Transport · Conducción · Trasporto

### Packing list

| CTT 721 -32 HD23  | DESCRIPTION · BESCHREIBUNG · DESCRIPTION · DESCRIPCIÓN · DESCRIZIONE                        | LENGTH · LÄNGE · LONGUEUR · LONGITUD · LUNGHEZZA | WIDTH · BREITE · LARGEUR · ANCHURA · LARGHEZZA | HEIGHT · HÖHE · HAUTEUR · ALTURA · ALTEZZA | QUANTITY · MENGE · QUANTITÉ · CANTIDAD · QUANTITÀ | WEIGHT · GEWICHT · POIDS · PESO · PESO |
|---|---|--|--|--|---|--|
|    | 8x8 m UNDERCARRIAGE STRUT MOUNTING TOWER SECTION  | 9.5 ft   | 9.5 ft   | 9.5 ft                                     | 1   | 20,176 lbs                             |
|    | 8x8 m UNDERCARRIAGE STRUT   | 14.1 ft  | 1 ft   | 7.4 ft                                     | 4   | 4,013 lbs                              |
|    | 8x8 m UNDERCARRIAGE INTERNAL BEAM   | 13.1 ft  | 0.5 ft   | 1.1 ft                                     | 4   | 463 lbs                                |
|    | 8x8 m UNDERCARRIAGE EXTERNAL BEAM   | 19.6 ft  | 1 ft   | 1.1 ft                                     | 4   | 1,380 lbs                              |
|    | 10x10 m UNDERCARRIAGE STRUT MOUNTING TOWER SECTION  | 9.8 ft   | 9.8 ft   | 10.2 ft                                    | 1   | 23,042 lbs                             |
|  | 10x10 m LEFT + RIGHT UNDERCARRIAGE STRUT  | 18.7 ft  | 8.5 ft   | 2.3 ft                                     | 2 left + 2 right                                  | 8,434 lbs                              |
|  | CROSSBEAM FOR TRAVELLING 10x10 m UNDERCARRIAGE  | 23 ft  | 7.2 ft   | 1.3 ft                                     | 2   | 4,476 lbs                              |
|  | 10x10 m UNDERCARRIAGE ELECTRICAL BOX SUPPORT PLATFORM FOR TVF 4RT 4M9 TRAVELLING DRIVE UNIT | 18.7 ft  | 7.2 ft   | 7.9 ft                                     | 1   | 2,867 lbs                              |
|  | 10x10 m UNDERCARRIAGE ELECTRICAL BOX SUPPORT PLATFORM FOR TSR 4RG 4M8 TRAVELLING DRIVE UNIT | 18.4 ft  | 6.9 ft   | 12.1 ft                                    | 1   | 1,422 lbs                              |
|  | TOWER SECTION HD23 26.6   | 19.7 ft  | 8 ft   | 7.6 ft                                     | 1   | 14,273 lbs*                            |
|  | TOWER SECTION HD23 22.6   | 19.7 ft  | 7.5 ft   | 7.5 ft                                     | 1   | 10,635 lbs*                            |
|  | TOWER SECTION HD23 22.3   | 9.8 ft   | 7.5 ft   | 7.5 ft                                     | 1   | 5,623 lbs*                             |
|  | SLEWING UNIT  | 8.2 ft   | 9.8 ft   | 8.8 ft                                     | 1   | 34,178 lbs                             |

\* inclusive of ladders, platforms and assembly equipment

\*\* inclusive of tie-bars and safety rails

\*\*\* inclusive of trolley winch and accessories

\*\*\*\* ballast plates not included

**WORKS FOR YOU.™**

# TRANSPORTATION

Transport · Transport · Conducción · Trasporto

| CTT 721 -32 HD23  | DESCRIPTION · BESCHREIBUNG · DESCRIPTION · DESCRIPCIÓN · DESCRIZIONE | LENGTH · LÄNGE · LONGUEUR · LONGITUD · LUNGHEZZA | WIDTH · BREITE · LARGEUR · ANCHURA · LARGHEZZA | HEIGHT · HÖHE · HAUTEUR · ALTURA · ALTEZZA | QUANTITY · MENGE · QUANTITÉ · CANTIDAD · QUANTITÀ | WEIGHT · GEWICHT · POIDS · PESO · PESO |
|---|--|--|--|--|---|--|
|    | CAB SUPPORT PLATFORM   | 18.2 ft  | 6.1 ft   | 8.8 ft                                     | 1   | 2000 lbs                               |
|    | CAB TOWER SECTION  | 8.4 ft   | 7.1 ft   | 10.8 ft                                    | 1   | 8,379 lbs                              |
|    | COUNTERJIB "1B"  | 23.5 ft  | 2.9 ft   | 6.1 ft                                     | 1   | 9,482 lbs**                            |
|    | COUNTERJIB "3B"  | 38.3 ft  | 3.6 ft   | 7 ft                                       | 1   | 13,010 lbs**                           |
|    | JIB SECTION-19<br>19TT19 25.12                                       | 39.4 ft  | 8.3 ft   | 3.387ft                                    | 1   | 27,563 lbs***                          |
|  | JIB SECTION-20<br>20TT19 25.12                                       | 33.7 ft  | 8.4 ft   | 6.1 ft                                     | 1   | 14,553                                 |
|  | JIB SECTION-21<br>21TT19 23.10                                       | 33.8 ft  | 6.1 ft   | 8.3 ft                                     | 1   | 10,805 lbs                             |
|  | JIB SECTION-22<br>22TT19 23.10                                       | 33.9 ft  | 6.1 ft   | 8.2 ft                                     | 1   | 8,820 lbs                              |
|  | JIB SECTION-04<br>TT19 23.05   | 16.4 ft  | 6.1 ft   | 8.2 ft                                     | 1   | 3,969 lbs                              |
|  | JIB SECTION-05<br>TT19 23.10   | 32.8 ft  | 6.1 ft   | 8.2 ft                                     | 1   | 5,954 lbs                              |
|  | JIB SECTION-06<br>TT19 20.10   | 33.8 ft  | 6.1 ft   | 7.2 ft                                     | 1   | 4,256 lbs                              |
|  | JIB SECTION-07<br>TT1920.05  | 17.3 ft  | 6.1 ft   | 7.2 ft                                     | 1   | 1,985 lbs                              |
|  | JIB SECTION-08<br>TT1917.05  | 17.2 ft  | 6.1 ft   | 6.1 ft                                     | 1   | 1,720 lbs                              |
|  | JIB SECTION-09<br>TT1917.05  | 17.1 ft  | 6.1 ft   | 6.1 ft                                     | 1   | 2,073 lbs                              |







\* inclusive of ladders, platforms and assembly equipment

\*\* inclusive of tie-bars and safety rails

\*\*\* inclusive of trolley winch and accessories

\*\*\*\* ballast plates not included

# CTT 721-32 HD23

| CTT 721 -32 HD23  | DESCRIPTION · BESCHREIBUNG · DESCRIPTION · DESCRIPCIÓN · DESCRIZIONE | LENGTH · LÄNGE · LONGUEUR · LONGITUD · LUNGHEZZA | WIDTH · BREITE · LARGEUR · ANCHURA · LARGHEZZA | HEIGHT · HÖHE · HAUTEUR · ALTURA · ALTEZZA | QUANTITY · MENGE · QUANTITÉ · CANTIDAD · QUANTITÀ | WEIGHT · GEWICHT · POIDS · PESO · PESO |
|---|--|--|--|--|---|--|
|    | JIB SECTION-10<br>TT1917.05  | 17 ft  | 6.1 ft   | 6.1 ft                                     | 1   | 1,147 lbs                              |
|    | JIB SECTION-11<br>TT1917.05  | 16.9 ft  | 6.1 ft   | 6.1 ft                                     | 1   | 997 lbs                                |
|    | JIB POINT  | 7 ft   | 4.1 ft   | 5.2 ft                                     | 1   | 783 lbs                                |
|    | JIB TROLLEY 32-40 t  | 8.5 ft   | 7.5 ft   | 5.1 ft                                     | 1   | 1,985 lbs                              |
|   | 4-PART LINE<br>HOIST BLOCK<br>32 t                                   | 5.9 ft   | 2.3 ft   | 6.6 ft                                     | 1   | 2,503 lbs****                          |
|  | HOIST WINCH 94 AFC 160 D2<br>(VECTOR 2) (without rope)               | 15 ft  | 8.4 ft   | 8.2 ft                                     | 1   | 15,986 lbs                             |

## Notes · Notizen · Note · Apunte · Appunti

---

---

---

---

---

---

---

---

---

---

[www.terexcranes.com](http://www.terexcranes.com)

Effective Date: June 2010.

Product specifications and prices are subject to change without notice or obligation. The photographs and/or drawings in this document are for illustrative purposes only. Refer to the appropriate Operator's Manual for instructions on the proper use of this equipment. Failure to follow the appropriate Operator's Manual when using our equipment or to otherwise act irresponsibly may result in serious injury or death. The only warranty applicable to our equipment is the standard written warranty applicable to the particular product and sale and Terex makes no other warranty, express or implied. Products and services listed may be trademarks, service marks or trade-names of Terex Corporation and/or its subsidiaries in the USA and other countries. All rights are reserved. Terex® is a registered trademark of Terex Corporation in the USA and many other countries.

Gültig ab: Juni 2010.

Produktbeschreibungen und Preise können jederzeit und ohne Verpflichtung zur Ankündigung geändert werden. Die in diesem Dokument enthaltenen Fotos und/oder Zeichnungen dienen rein anschaulichen Zwecken. Anweisungen zur ordnungsgemäßen Verwendung dieser Ausrüstung entnehmen Sie bitte dem zugehörigen Betriebshandbuch. Nichtbefolgung des Betriebshandbuchs bei der Verwendung unserer Produkte oder anderweitig fahrlässiges Verhalten kann zu schwerwiegenden Verletzungen oder Tod führen. Für dieses Produkt wird ausschließlich die entsprechende, schriftlich niedergelegte Standardgarantie gewährt. Terex leistet keinerlei darüber hinaus gehende Garantie, weder ausdrücklich noch stillschweigend. Die Bezeichnungen der aufgeführten Produkte und Leistungen sind gegebenenfalls Marken, Servicemarken oder Handelsnamen der Terex Corporation und/oder ihrer Tochtergesellschaften in den USA und anderen Ländern. Alle Rechte vorbehalten. „TEREX“ ist eine eingetragene Marke der Terex Corporation in den USA und vielen anderen Ländern.

Date d'effet : Juin 2010.

Les spécifications et prix des produits sont sujets à modification sans avis ou obligation. Les photographies et/ou dessins contenus dans ce document sont uniquement pour illustration. Veuillez vous référer à la notice d'utilisation appropriée pour les instructions quant à l'utilisation correcte de cet équipement. Tout manquement au suivi de la notice d'utilisation appropriée lors de l'utilisation de notre équipement ou tout acte autrement irresponsable peut résulter en blessure corporelle sérieuse ou mortelle. La seule garantie applicable à notre équipement est la garantie standard écrite applicable à un produit et à une vente spécifique. Terex n'offre aucune autre garantie, expresse ou implicite. Les produits et services proposés peuvent être des marques de fabrique, des marques de service ou des appellations commerciales de Terex Corporation et/ou ses filiales aux Etats Unis et dans les autres pays, et tous les droits sont réservés. «TEREX» est une marque déposée de Terex Corporation aux Etats Unis et dans de nombreux autres pays.

Fecha efectiva: Junio 2010.

Los precios y las especificaciones de productos pueden sufrir cambios sin aviso previo u obligación. Las fotografías o dibujos de este documento tienen un fin meramente ilustrativo. Consulte el manual de instrucciones del operador correspondiente para más información sobre el uso correcto de este equipo. El hecho de no respetar el manual del operador correspondiente al utilizar el equipo o actuar de forma irresponsable puede suponer lesiones graves o fatales. La única garantía aplicable a nuestro equipo es la garantía escrita estándar correspondiente a cada producto y venta, y TEREX no amplía dicha garantía de forma expresa o implícita. Los productos y servicios mencionados pueden ser marcas registradas, marcas de servicio o nombres de marca de TEREX Corporation o de sus filiales en Estados Unidos de América y otros países, y se reservan todos los derechos. „TEREX“ es una marca comercial registrada de Terex Corporation en Estados Unidos de América y muchos otros países.

Data di inizio validità: Giugno 2010.

Ci riserviamo il diritto di modificare le specifiche e i prezzi dei prodotti in ogni momento e senza preavviso. Le fotografie e/o i disegni contenuti in questo documento sono destinati unicamente a scopi illustrativi. Consultare le istruzioni sull'uso corretto di questo macchinario, contenute nell'opportuno Manuale dell'operatore. L'inottemperanza delle istruzioni contenute nel Manuale dell'operatore del macchinario e altri comportamenti irresponsabili possono provocare gravi lesioni, anche mortali. L'unica garanzia applicabile ai nostri macchinari è la garanzia scritta standard applicabile al particolare prodotto e alla particolare vendita; Terex è esonerata dal fornire qualsiasi altra garanzia, esplicita o implicita. I prodotti e servizi elencati possono essere dei marchi di fabbrica, marchi di servizio o nomi commerciali di TEREX Corporation e/o società affiliate negli Stati Uniti d'America e altre nazioni e tutti i diritti sono riservati. „TEREX“ è un marchio registrato di Terex Corporation negli USA e molti altri Paesi.

Copyright 2010 Terex Corporation

Terex Cranes, Global Marketing, Dinglerstraße 24, 66482 Zweibrücken, Germany  
Tel. +49 (0) 6332 830, Email: [info.cranes@terex.com](mailto:info.cranes@terex.com), [www.terexcranes.com](http://www.terexcranes.com)

Brochure Reference: TC-DS-IMP-E/F/G/I/S-CTT721-32 HD23-06/10



**WORKS FOR YOU.™**