

# QY35K FULL HYDRAULIC TRUCK CRANE

QY35K主臂起重性能表 Total rated lifting load for boom 表一(Table1)

工作幅度 Working radius m	基本臂 Base boom 10.5m		中长臂 Mid-extend boom 18m		中长臂 Mid-extend boom 25.5m		全伸臂 Full-extend boom 33m	
	起重量 Lifting Load (kg)	起升高度 Lifting Height (m)	起重量 Lifting Load (kg)	起升高度 Lifting Height (m)	起重量 Lifting Load (kg)	起升高度 Lifting Height (m)	起重量 Lifting Load (kg)	起升高度 Lifting Height (m)
3.0	35000	10.56						
3.5	34000	10.34	19000	18.34				
4.0	27500	10.07	19000	18.19				
4.5	25000	9.76	19000	18.03	14000	25.82		
5.0	22500	9.40	18000	17.85	13000	25.70		
5.5	20000	9.01	18000	17.66	12000	25.56	8500	33.28
6.0	18000	8.56	17000	17.44	11200	25.42	8200	33.17
	14000	7.44	15000	16.96	10000	25.10	7200	32.92
8.0	11710	5.90	12000	16.40	8200	24.73	6400	32.65
9.0	9350	3.13	10000	15.75	8600	24.31	5900	32.34
10.0			8200	15.00	8000	23.85	5600	31.99
12.0			5800	13.12	6200	22.74	5450	31.19
14.0			4250	10.48	4700	21.39	4700	30.22
16.0			3000	6.00	3600	19.72	3500	29.09
18.0					2700	17.66	2700	27.75
20.0					2100	15.01	2000	26.19
22.0					1700	11.36	1600	24.36
24.0							1230	22.17
26.0							950	19.53
28.0							600	16.17
30.0							400	11.45
每米 rate of rise	10		6		4		3	
吊钩重量 Weight of hook block	400kg							
主臂最小仰角 Min. boom angle	15.6°		18.4°		25.5°		19.7°	
主臂仰角 Boom angle	69.8°		76.97°		78.4°		79.3°	

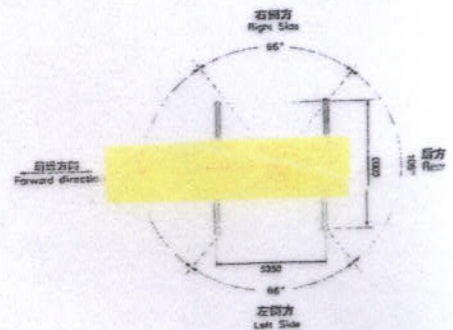
表一(Table1)

注：对表一、表二起重量的说明：

- ◆ (1)表中额定起重量所表示的数值，是在平整的坚固地面上本起重机能保证的最大起重量。
- ◆ (2)表中额定起重量包括吊钩和吊具的重量。
- ◆ (3)表中的工作幅度是包括吊臂的变形量在内的实际值。
- ◆ (4)即风压为125N/m<sup>2</sup>允许达7级风时起重机仍可作业。
- ◆ (5)表一起升高度及表二的幅度均为参考值。

Notes about table 1 and table 2:

- ◆ (1)The data in the table are the max. lifting capacity when the crane is set up on level and firm ground.
- ◆ (2)The total rated lifting load in the table includes the weight of hook block and slings.
- ◆ (3)The working radius in the table is the actual value including boom deflection under loads.
- ◆ (4)Wind pressure 125N/m<sup>2</sup>, lifting operation is also allowed under the condition of wind force scale 7.
- ◆ (5)Lifting height in table 1 and working radius in table 2 are reference value.

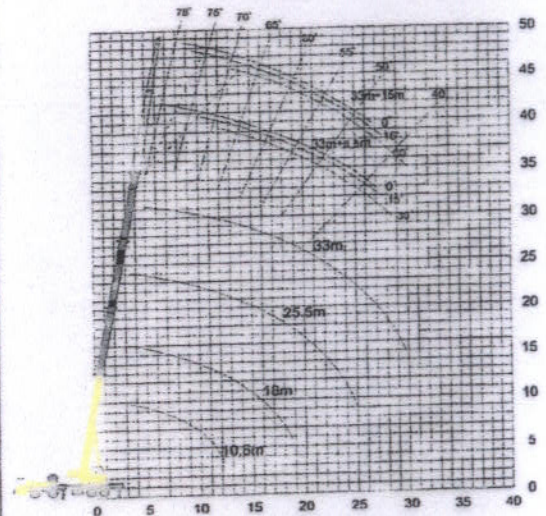


▲ 工作区域划分 Working Area

副臂起重性能表 (侧后方) Total rated lifting load for jib (over side and rear) 表二 (Table 2)

主臂仰角 Boom angle (°)	主臂 Boom 33m 补偿角 Offset angle					
	0°		15°		30°	
	副臂 Jib 8.5m	副臂 Jib 15m	副臂 Jib 8.5m	副臂 Jib 15m	副臂 Jib 8.5m	副臂 Jib 15m
78	4000	2100	2700	1400	2440	1100
75	3600	2000	2500	1200	2300	1000
72	3400	1850	2300	1170	2200	950
70	3200	1740	2200	1100	2100	950
65	2700	1440	2050	990	2000	880
60	1800	1220	1700	880	1500	830
55	1300	950	1200	800	1200	780
50	1000	600	850	520	750	450
40	550		510		500	

吊钩重量 with hook block: 4吨用 100kg for 4t(100kg)



▲ 起升高度曲线 Lifting Height Curve

注：公司保留随技术改进而修改技术参数及部件的权利  
All specifications are subject to technical modifications without notice

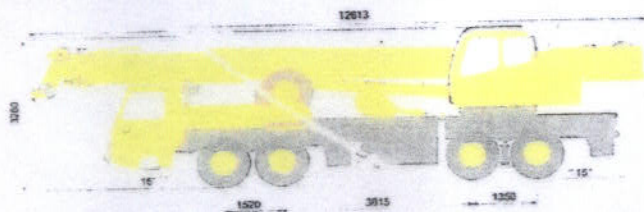


# QY35K

三一牌 汽车起重机

## 尺寸参数 Dimensions

整机全长 Overall length	mm	12613
整机全宽 Overall width	mm	2500
整机全高 Overall height	mm	3280



▲ 整机外形尺寸 Outline dimensions

## 重量参数 Weight

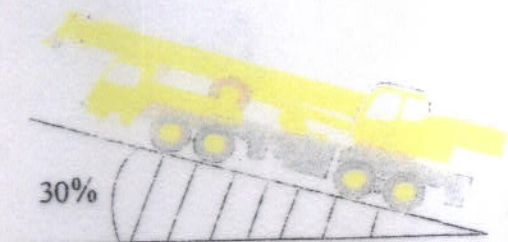
行驶状态整机质量 Dead weight in travel state	kg	32300
轴荷 Axle load		
前轴 Front Axle	kg	11150
后轴 Rear Axle	kg	21150

## 动力参数 Power

发动机型号 Engine model	Steyr WD615.50	SC8DK28003
发动机额定功率 Engine rated output	kW/(r/min)	206/2200
发动机额定扭矩 Engine rated torque	N.m/(r/min)	1300/1600
发动机额定转速 Max. travel speed	r/min	2200

## 行驶参数 Travel

最高行驶速度 Max. Travel speed	km/h	72
最小转弯直径 Min. turning diameter	mm	24
最小离地间隙 Min. ground clearance	mm	260
接近角 Approach angle	°	16
离去角 Departure angle	°	13
制动距离 (车速为 30km/h) Braking distance	m	10
最大爬坡能力 Max. Gradeability	%	30
百公里油耗 Fuel consumption of 100km	L	~36



直径24米

## 主要性能参数 Lifting performance

最大额定总起重量 Max. Total rated lifting load	t	35
最小额定幅度 Min. rated working radius	m	3
转台局部回转半径 Turning radius at swing table tail	mm	3055
最大起重量矩 Max. load moment		
基本臂 Base boom	kN.m	1166
最长主臂 Full-extend boom	kN.m	644.8
支腿距离 Outrigger extension distance		
纵向 / 横向 Longitudinal / Lateral	m	5.35/6.0
起升高度 Lifting height		
基本臂 Base boom	m	10.5
最长主臂 Full-extend boom	m	33
最长主臂+副臂 Full-extend boom+Jib	m	48.7

## 工作速度参数 Working speed

起升臂全缩回时间 Boom raising time	s	80
起升臂全伸回时间 Boom telescoping Full-extending time	s	100
最大回转速度 Max. slewing speed	r/min	2
支腿伸缩时间 Outrigger telescoping time		
水平支腿同时伸/缩 Outrigger beam extending/retracting synchronously	s	35/30
垂直支腿同时伸/缩 Outrigger jack extending/retracting synchronously	s	40/25
起升速度 (单绳) Hoisting speed (single rope)	m/min	85/110
主起升机构满载 / 空载 Main winch with full load / no load	m/min	80/100
副起升机构满载 / 空载 Auxiliary winch with full load / no load	m/min	80/100

四节八边形伸缩式吊臂  
4-section octagonal telescopic boom

流线型整体式复合材料壳体的驾驶室、操纵室  
streamlined and integrated driver's cab and operator's cab made of complex material

