

KOBELCO

7800

Hydraulic Crawler Crane

Specifications

Crawler Crane

Max. Lifting Capacity: 750 metric ton x 5.6 m

Luffing Jib

Max. Lifting Capacity: 230 metric ton x 22.0 m

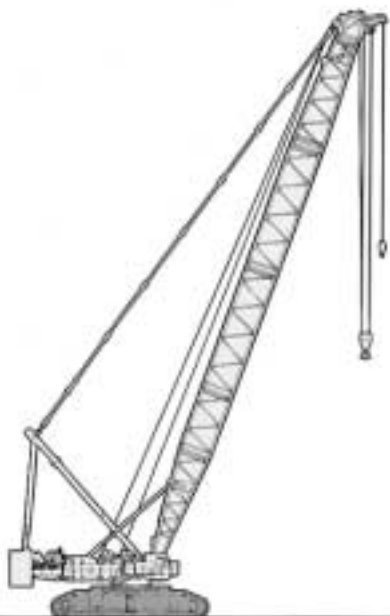
HL (Heavy Lift)

Max. Lifting Capacity: 450 metric ton x 10.0 m

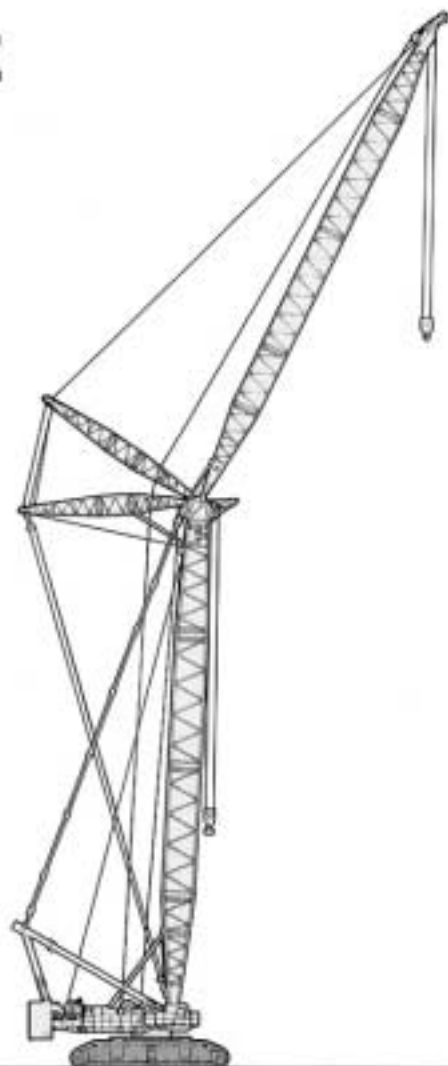
SHL (Super Heavy Lift)

Max. Lifting Capacity: 450 metric ton x 18.0 m

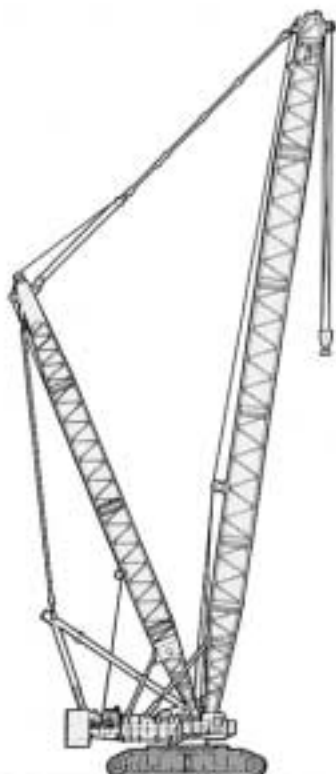
CONFIGURATION & STYLE OF ATTACHMENT



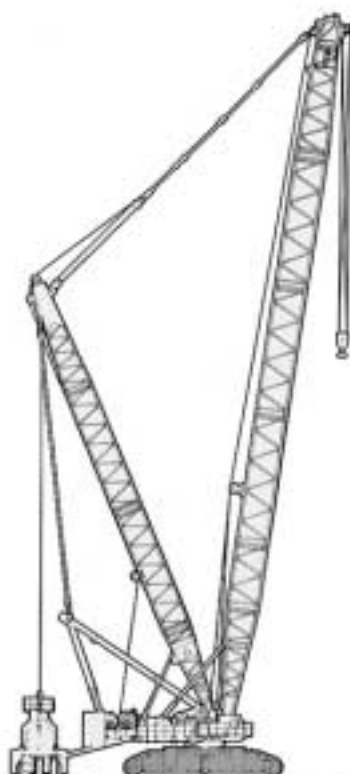
CRAWLER CRANE



LUFFING JIB



HEAVY LIFT (HL)



SUPER HEAVY LIFT (SHL)

Style	Crawler Crane		Luffing Jib		HL		SHL		
	Heavy Duty Boom	Light Duty Boom	Fixed Boom	Variable Angling Boom	—	—	—	—	—
Counterweight	A	A B	B	B*	A	B	T _(15.6m)	T _(18.0m)	T _(20.0m)

SPECIFICATION

Max. lifting capacity (metric ton x m)	750 x 5.6	450 x 10.0	355 x 11.0	230 x 22.0	230 x 16.0	450 x 10.0	288 x 14.0	450 x 16.0	450 x 18.0	450 x 18.0
Max. total length (boom + Jib)	42.67	103.6	115.8	85.34 + 73.15	85.34 + 73.15	103.6	115.8	121.9	121.9	121.9

COUNTERWEIGHT

Std. Counterweight (168 metric ton)	○	○	○	○	○	○	○	○	○	○
Additional counterweight (37.0 metric ton)	—	—	○	○	○*	—	○	—	—	—
Counterweight Trailer (240 Metric ton)	—	—	—	—	—	—	—	○	○	○

BASIC BOOM

12.19m (40') lower boom	1	1	1	1	1	1	1	1	1	1
6.10m (20') heavy duty upper boom	1	—	—	—	—	—	—	—	—	—
10.67m (35') + 1.52m (5') light duty upper boom	—	1	1	1	1	1	1	1	1	1

BOOM INSERT

6.10m (20') insert boom	—	1	1	—	—	1	1	—	—	—
12.19m (30') insert boom	2	6	7	5	5	6	7	8	8	8
Box-type mast	1	1	1	1	1	1	1	1	1	1

LUFFING JIB

9.14m (30') upper jib	—	—	—	1	1	—	—	—	—	—
9.14m (30') Lower jib	—	—	—	1	1	—	—	—	—	—
6.10m (20') insert jib	—	—	—	1	1	—	—	—	—	—
12.19m (40') insert jib	—	—	—	4	4	—	—	—	—	—

MAST

9.14m (30') upper mast	—	—	—	—	—	1	1	1	1	1
9.14m (30') lower mast	—	—	—	—	—	1	1	1	1	1
12.19m (40') insert mast	—	—	—	—	—	3	3	3	3	3

Note: ● A in the column weight above means "with standard counterweight". B means "with standard counterweight +additional counterweight".
T means "with standard counterweight +counterweight trailer".
● Figures of the Boom & Jib above shown mean the numbers for the maximum length respectively.
● B* is applicable for the boom length of over 60.96m.

RATING CHART FOR CRAWLER CRANE

HEAVY-DUTY MAIN BOOM

Heavy boom/ with standard counterweight

Unit: metric ton

Working radius (m) \ Boom length (ft)	18.29 (60)	24.38 (80)	30.48 (100)	36.58 (120)	42.67 (140)
5	5.6m/750.0				
6	720.0	6.3m/650.0			
7	660.0	650.0	7.2m/597.0		
8	605.0	604.0	597.0	532.0	
9	550.0	549.0	548.0	527.0	466.0
10	500.0	499.0	498.0	496.0	462.0
12	418.0	417.0	411.0	406.0	400.0
14	346.0	346.0	341.0	336.0	331.0
16	294.0	295.0	291.0	287.0	282.0
18	226.0	256.0	253.0	249.0	245.0
20		226.0	223.0	220.0	216.0
22		199.0	199.0	197.0	193.0
24			175.0	174.0	173.0
26			155.0	155.0	154.0
28			139.0	139.0	138.0
30				125.0	124.0
34				104.0	103.0
38					87.0

Notes :

- Working radius is the horizontal distance from the center of rotation through the center of gravity of load.
- Ratings do not exceed 78% of tipping load on the hard horizontal ground and includes weight of hook block, slings and all other load handling accessories from main boom or jib rating shown.
- Ratings shown are based on freely suspended load and make no allowance for such factors as wind effect on lifted load, out-of-level ground conditions, operating speeds or any other condition that could be detrimental to the safe operation of this equipment. The operator, therefore, has the responsibility to judge the existing conditions and reduce lifted loads and operating speed accordingly.
- No operation is possible in the range indicated by blank spaces in the chart.
- The actual hoistable loads using main boom must be calculated by deducting the weight of main hook, slings and all other load handling accessories etc. from the ratings shown.
- The actual hoistable loads using jib must be calculated by deducting the weight of jib hook, slings and all other loads handling accessories etc. from the rating shown.
- Configurations of main Boom/jib inserts and guy cables installations must be arranged as per the instruction of the owner and operator's manual, to be provided with machine.
- Hook block weight and capacity (metric ton).

Capacity of hook	450	230	100	50	16.5
Weight	9.1	6.6	4.6	2.4	0.94

9. Max. hoisting load

(Single Drum)

No. of Parts of Line	1	2	3	4	5	6	7	8	9	10	11	12
Max. Load (metric ton)	16.5	33.0	49.5	66.0	82.5	99.0	115.5	132.0	148.5	165.0	181.1	199.0
No. of Parts of Line	13	14	15	16	17	18	19	20	22	24	26	28
Max. Load (Metric ton)	214.5	230.0	243.0	257.0	270.0	283.0	296.0	309.0	334.0	357.0	380.0	402.0

(Double Drum)

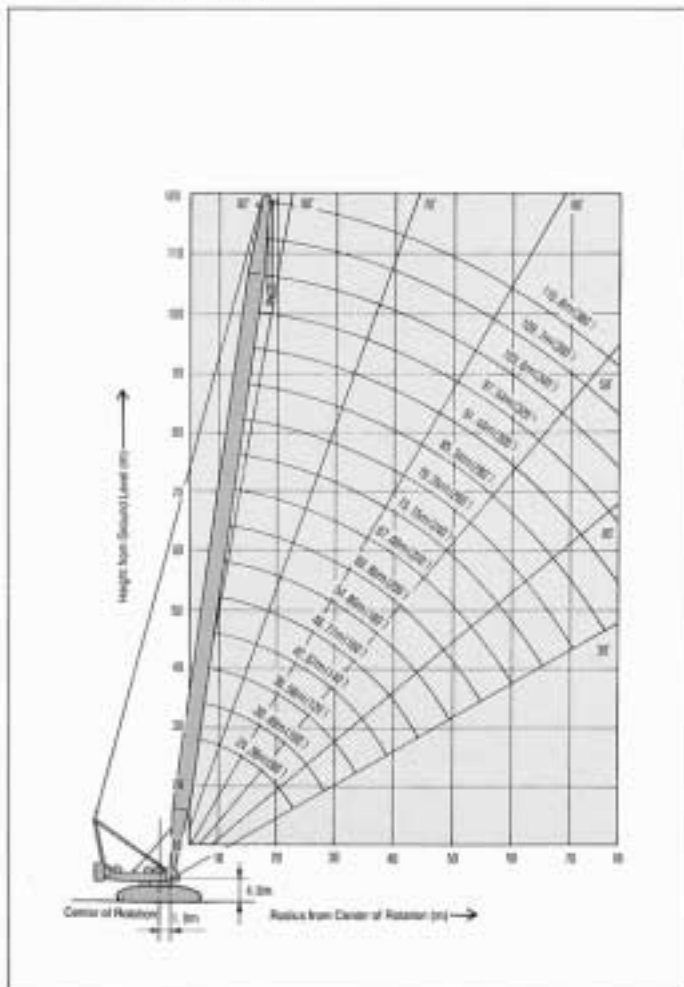
No. of Parts of Line	2	4	6	8	10	12	14	16	18	20	22	24
Max. Load (metric ton)	33.0	66.0	99.0	132.0	165.0	198.0	230.0	264.0	297.0	330.0	363.0	396.0
No. of Parts of Line	26	28	30	32	34	36	38	40	42	44	46	48
Max. Load (Metric ton)	439.0	482.0	512.0	541.0	569.0	597.0	624.0	651.0	677.0	703.0	728.0	750.0

- Auxiliary sheave will be installed with 30.48 m (100') to 97.54 m (320') length of light duty boom and 24.38 m (80') to 67.06 m (220') length of boom for luffing jib.
- Rating of aux. sheaves is the figure after the weight of aux. sheave (700 kg for light duty boom, 800 kg for boom for luffing jib) and main hook deducted from the rating of boom, but shall not exceed more than 12.5 metric ton.
- Actual hoistable loads using aux. sheave must be calculated by deducting 12.5 metric ton ball-hook, slings and other loads handling accessories from the rating shown.

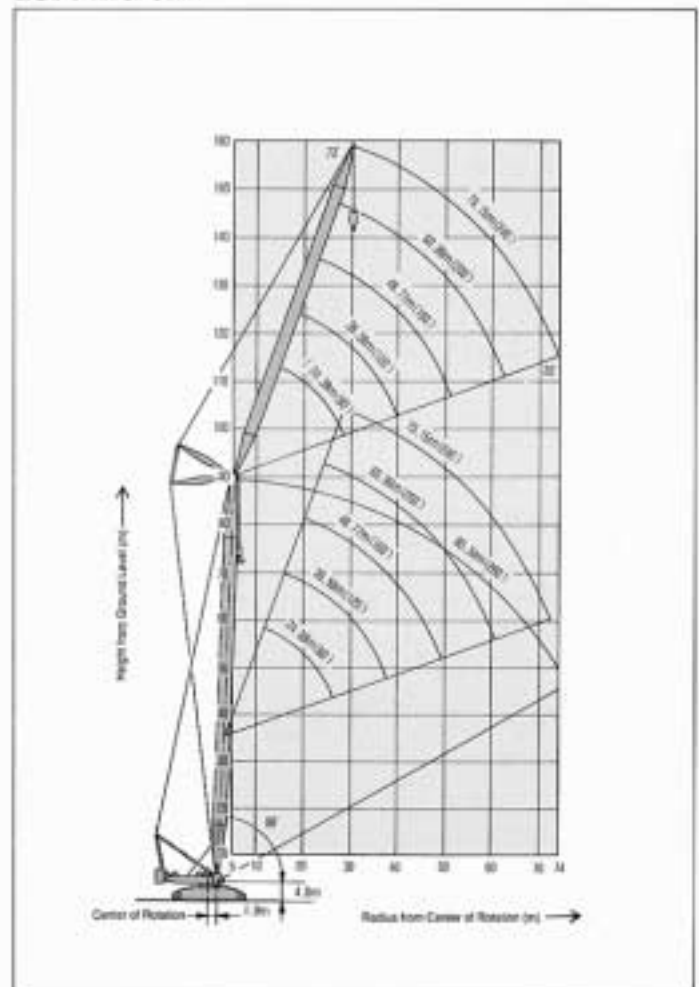
13. When boom is equipped with aux. sheave, main hook rating shall be determined by deducting the weight of the aux. sheave from the rating of the main hook without aux. sheave.
14. Actual hoistable load with main boom being equipped with aux. sheave shall be determined by deducting the weight of hook, slings and other handling rope etc., from the main boom rating with aux. sheave.
15. Maximum working radius with jib or aux. sheave shall not exceed the maximum working radius of the main boom.

WORKING RANGES

CRAWLER CRANE



LUFFING JIB



LIGHT DUTY MAIN BOOM

Light-duty boom/with standard counterweight

Unit : metric ton

Working radius (m) \ Boom length (m) (ft)	24.38 (80)	30.48 (100)	36.58 (120)	42.67 (140)	48.77 (160)	54.86 (180)	60.96 (200)	67.06 (220)	73.15 (240)	79.25 (260)	85.34 (280)	91.44 (300)	97.54 (320)	103.6 (340)		
6.5	450.0															
7	450.0	7.6m/450														
8	450.0	450.0	8.5m/450													
9	450.0	450.0	450.0	9.3m/450												
10	450.0	450.0	450.0	447.0	10.2m/355	11.0m/355										
12	421.0	415.0	409.0	404.0	394.0	351.0	311.0	12.7m/272	13.6m/239							
14	349.0	345.0	340.0	335.0	334.0	330.0	299.0	265.0	237.0	14.4m/211	15.3m/187					
16	298.0	294.0	290.0	286.0	285.0	281.0	278.0	256.0	229.0	206.0	184.0	16.1m/165	17.0m/147	17.8m/130		
18	259.0	256.0	253.0	249.0	248.0	244.0	242.0	239.0	222.0	199.0	179.0	161.0	145.0	130.0		
20	229.0	227.0	224.0	220.0	219.0	216.0	213.0	210.0	208.0	192.0	174.0	156.0	141.0	127.0		
22	202.0	202.0	200.0	197.0	196.0	193.0	190.0	187.0	185.0	182.0	168.0	151.0	136.0	122.0		
24		178.0	178.0	177.0	176.0	174.0	171.0	169.0	166.0	164.0	162.0	146.0	131.0	118.0		
26		158.0	158.0	157.0	156.0	155.0	154.0	153.0	151.0	148.0	146.0	140.0	126.0	113.0		
28		142.0	142.0	141.0	140.0	139.0	139.0	137.0	136.0	135.0	133.0	131.0	121.0	108.0		
30			129.0	127.0	126.0	125.0	124.0	123.0	122.0	121.0	120.0	119.0	118.0	103.0		
34			108.0	106.0	105.0	104.0	103.0	102.0	101.0	100.0	99.0	98.0	97.0	96.0		
38				90.0	89.0	88.0	87.0	86.0	85.0	84.0	83.0	81.0	80.0	79.0		
42					76.0	75.0	74.0	73.0	72.0	71.0	70.0	68.0	67.0	66.0		
46						65.0	64.0	63.0	62.0	60.0	59.0	58.0	57.0	56.0		
50							57.0	56.0	55.0	54.0	52.0	51.0	50.0	49.0	47.0	
54								49.0	48.0	47.0	45.0	44.0	43.0	42.0	40.0	
58									42.0	41.0	39.0	38.0	37.0	36.0	34.0	
62										36.0	34.0	33.0	32.0	30.0	28.0	
66											32.0	30.0	29.0	27.0	25.0	23.0
70												26.0	24.0	22.0	20.0	19.0
74													21.0	19.0	17.0	15.0
78														15.0	13.0	11.0

Light duty boom/with standard counterweight + additional counterweight

Unit : metric ton

Working radius (m) \ Boom length (m) (ft)	54.86 (180)	60.96 (200)	67.06 (220)	73.15 (240)	79.25 (260)	85.34 (280)	91.44 (300)	97.54 (320)	103.6 (340)	109.7 (360)	115.8 (380)	
11	355.0											
12	351.0	311.0	12.7m/272	13.6m/239								
14	330.0	299.0	265.0	237.0	14.4m/211	15.3m/187						
16	281.0	278.0	256.0	229.0	206.0	184.0	16.1m/165	17.0m/147	17.8m/130			
18	244.0	242.0	239.0	222.0	199.0	179.0	161.0	145.0	130.0	18.7m/121	19.5m/105	
20	216.0	213.0	210.0	208.0	192.0	174.0	156.0	141.0	127.0	120.0	105.0	
22	193.0	190.0	187.0	185.0	182.0	168.0	151.0	136.0	122.0	118.0	103.0	
24	174.0	171.0	169.0	166.0	164.0	162.0	146.0	131.0	118.0	110.0	101.0	
26	158.0	155.0	153.0	151.0	148.0	146.0	140.0	126.0	113.0	106.0	95.0	
28	145.0	142.0	140.0	137.0	135.0	133.0	131.0	121.0	108.0	102.0	92.0	
30	133.0	130.0	128.0	126.0	124.0	122.0	120.0	118.0	103.0	98.0	88.0	
34	114.0	112.0	110.0	108.0	105.0	103.0	101.0	99.0	96.0	91.0	80.0	
38	99.0	97.0	95.0	93.0	91.0	89.0	87.0	85.0	83.0	81.0	73.0	
42	88.0	86.0	83.0	81.0	79.0	78.0	75.0	74.0	72.0	70.0	65.0	
46	77.0	75.0	74.0	72.0	70.0	68.0	66.0	64.0	62.0	61.0	59.0	
50	67.0	66.0	65.0	64.0	62.0	60.0	58.0	56.0	54.0	53.0	51.0	
54		59.0	57.0	56.0	55.0	53.0	51.0	49.0	47.0	46.0	44.0	
58			51.0	50.0	48.0	47.0	46.0	44.0	42.0	40.0	38.0	
62				44.0	42.0	41.0	40.0	39.0	37.0	35.0	33.0	
66					38.0	37.0	36.0	35.0	34.0	32.0	31.0	29.0
70						33.0	32.0	31.0	29.0	27.0	26.0	24.0
74							28.0	27.0	25.0	23.0	21.0	19.0
78								23.0	21.0	19.0	17.0	15.0
82									17.0	15.0	14.0	

Note: Ratings above the line, a double drum is required for flensing of wire rope.

LUFFING JIB

30.48m boom/with standard counterweight

Unit : metric ton

Jib length m(ft)	24.38 (80)			30.48 (100)			36.58 (120)			42.67 (140)			48.77 (160)			54.86 (180)			60.96 (200)			67.06 (220)			73.15 (240)			
	88°	78°	68°	88°	78°	68°	88°	78°	68°	88°	78°	68°	88°	78°	68°	88°	78°	68°	88°	78°	68°	88°	78°	68°	88°	78°	68°	
12	230.0																											
14	230.0			213.1																								
16	230.0			206.7			176.7			153.3																		
18	206.9			201.0			171.5			149.0			129.6															
20	171.4	171.4		167.8			166.8			146.0			126.3			110.5												
22	142.4	142.4		163.0			162.4			141.2			123.1			107.9			94.2									
24	117.3	117.3		140.5	140.5		148.5			137.6			120.1			105.4			92.2			80.5						
26	93.6	93.6		121.2	121.2		133.4	133.4		134.2			117.3			103.3			90.2			78.9					68.5	
28		72.8		104.2	104.2		117.8	117.8		121.5			114.6			100.8			88.3			76.9					66.5	
30		53.8	53.8	88.7	88.7		104.0	104.0		110.7	110.7		111.6			98.6			85.4			74.8					64.6	
34			20.5	62.2	62.2		80.5	80.5		90.0	90.0		94.1	94.1		94.4	94.4		81.9			70.7					60.8	
36							40.3	61.3	61.3	72.2	72.2		78.8	78.8		80.9	80.9		77.5	77.5		66.6					57.2	
42							21.7	45.3	45.3	56.3	56.3	56.3	64.7	64.7		69.4	69.4		70.1	70.1		62.7	62.7			53.6	53.6	
46										31.7		42.4	42.4	52.3	52.3	52.3	58.0	58.0		61.2	61.2		59.0	59.0		50.2	50.2	
50												29.9		40.9	40.9	47.9	47.9	47.9	51.7	51.7		54.1	54.1		46.9	46.9		
54												18.8		30.6	30.6	38.3	38.3	38.3	43.4	43.4	43.4	46.2	46.2		43.8	43.8		
58														21.1		29.6	29.6	35.6	35.6	35.6	39.1	39.1	39.1	40.9	40.9			
62																		21.6	28.6	28.6	32.6	32.6	32.6	35.0	35.0	35.0		
66																				22.3	22.3	26.0	26.0	26.0	29.4	29.4	29.4	
70																					16.4	19.9	19.9	24.0	24.0	24.0		
74																							14.1	18.8	18.8			
78																											13.8	

48.77m boom/with standard counterweight

Unit : metric ton

Jib length m(ft)	24.38 (80)			30.48 (100)			36.58 (120)			42.67 (140)			48.77 (160)			54.86 (180)			60.96 (200)			67.06 (220)			73.15 (240)			
	88°	78°	68°	88°	78°	68°	88°	78°	68°	88°	78°	68°	88°	78°	68°	88°	78°	68°	88°	78°	68°	88°	78°	68°	88°	78°	68°	
12	230.0																											
14	230.0			214.5																								
16	230.0			207.9			177.6																					
18	212.8			202.0			172.3			149.5																		
20	187.4			196.7			167.4			145.4			126.6															
22	156.4			174.4			162.9			141.5			123.4			106.0			94.2									
24	130.1	130.1		150.7			157.2			137.9			120.3			105.5			92.1			80.4						
26	106.2	106.2		130.3			140.6			134.5			117.4			100.1			90.1			78.7					68.4	
28		85.5		112.7	112.7		125.7			127.9			114.7			100.8			88.2			77.0					66.5	
30		66.9	66.9	96.8	96.8		111.2	111.2		116.2			112.1			98.6			86.3			74.9					64.6	
34		35.3		70.2			86.9	86.9		95.6	95.6		93.6			94.4			82.0			70.7					60.8	
36				48.6			65.4	65.4		77.2	77.2		83.5	83.5		84.7	84.7		77.5			66.6					57.1	
42							30.7	47.3	47.3	61.2	61.2		69.0	69.0		73.2	73.2		73.2	73.2		62.7					53.5	
46							15.6	31.4	31.7	46.8			56.3	56.3		61.5	61.5		64.1	64.1		59.0	59.0			50.1	50.1	
50									17.4	39.9	39.9		44.4			51.3	51.3		54.9	54.9		55.5	55.5			46.8	46.8	
54												22.3	33.5	33.5	41.8	41.8	41.8		46.4	46.4		49.0	49.0			43.7	43.7	
58												11.7	23.4	23.4	33.4	33.4	38.5	38.5	38.5	41.8	41.8					40.8	40.8	
62													14.1	25.6	25.6				31.1	31.1	35.2	35.2	35.2	36.1	36.1			
66																			18.6	24.2	24.2	28.7	28.7	28.7	31.7	31.7	31.7	
70																				12.1		17.8	22.6	22.6	25.3	25.3	25.3	
74																						11.8	16.9	16.9		21.7	21.7	
78																								11.3	17.0	17.0		
82																												12.2

67.06m boom/with standard + additional counterweight

Unit: metric ton

Jib length m(ft)	24.38 (80)			30.48 (100)			36.58 (120)			42.67 (140)			48.77 (160)			54.86 (180)			60.96 (200)			67.06 (220)			73.15 (240)			
	88°	78°	68°	88°	78°	68°	88°	78°	68°	88°	78°	68°	88°	78°	68°	88°	78°	68°	88°	78°	68°	88°	78°	68°	88°	78°	68°	
12	181.5																											
14	173.6			165.0																								
16	160.6			161.4			161.0																					
18	149.2			150.0			149.9			149.8																		
20	139.1			140.0			139.8			139.7			127.0															
22	130.1			131.1			130.9			130.7			123.7		108.2													
24	122.0			123.1			122.9			122.6			120.6		105.6		92.1											
26	114.5			115.9			115.8			115.4			114.9		103.2		90.1		78.7									
28		107.6		109.4			109.3			108.9			108.4		100.8		88.1		77.0								66.5	
30		101.3		103.3			103.4			103.0			102.5		96.6		86.3		75.0								64.6	
34		90.0			93.0		91.7	91.7		92.3			92.0		91.6		82.1		70.8								60.8	
36		80.2			84.3		70.0	70.0		80.4	80.4		82.8		82.4		77.6		66.7								57.1	
42					76.8			56.9		64.1	64.1		71.5	71.5	72.8	72.8	71.2		62.8								53.5	
46						27.4		41.5			52.8		58.7	58.7	63.7	63.7	62.9	62.9	59.0								50.1	
50							11.9	26.0			39.9		46.6	46.6	53.3	53.3	55.8	55.8	54.3	54.3							46.8	46.8
54								10.6			27.1	27.1	34.6		43.7	43.7	48.0	48.0	48.2	48.2							43.6	43.6
58												14.2	22.4	22.4		33.9		40.1	40.1	43.0	43.0						40.7	40.7
62														10.3	10.3		24.2	24.2	32.6		36.5	36.5					36.2	36.2
66																14.4	14.4	25.0	25.0	30.2	30.2					31.7	31.7	
70																		17.4	17.4		24.3	24.3				27.4	27.4	
74																			9.8		18.3	18.3				22.9	22.9	
78																					12.2	12.2				18.5	18.5	
82																											14.0	14.0
86																												9.6

85.34m boom/with standard + additional counterweight

Unit: metric ton

Jib length m(ft)	24.38 (80)			30.48 (100)			36.58 (120)			42.67 (140)			48.77 (160)			54.86 (180)			60.96 (200)			67.06 (220)			73.15 (240)			
	88°	78°	68°	88°	78°	68°	88°	78°	68°	88°	78°	68°	88°	78°	68°	88°	78°	68°	88°	78°	68°	88°	78°	68°	88°	78°	68°	
14	102.6																											
16	93.6			93.2			92.7																					
18	85.6			85.3			85.4			84.8																		
20	78.5			79.0			78.7			78.4			77.1															
22	72.2			73.0			72.8			72.6			71.6		70.9													
24	66.6			67.7			67.6			67.4			66.5		66.0		64.6											
26	61.4			62.9			62.9			62.7			62.0		61.5		60.4		59.4									
28	56.5			58.5			58.6			58.5			57.9		57.4		56.4		55.6								54.8	
30				54.5			54.7			54.7			54.2		53.7		52.8		52.0								51.3	
34		43.6					47.9			48.1			47.7		47.3		46.5		45.7								45.1	
38		36.2			41.3		41.9	41.9		42.7			42.2		41.9		41.2		40.4								39.8	
42		29.5			36.1		36.7	37.5	37.5	37.5			37.5		37.2		36.7		35.9								35.3	
46					31.5		32.0			33.2	33.3	33.3	33.2	33.2	32.7		32.0		31.4								31.4	
50							27.9			29.4	29.6	29.6	29.6	29.6	29.3	29.3	28.6		28.0								28.0	
54						23.9	24.2			26.0			26.3	26.4	26.4	26.2	26.2	25.5	25.5	25.0	25.0						25.0	25.0
58						20.6		20.9		23.0			23.2		23.5	23.4	23.4	22.8	22.8	22.3	22.3						22.3	22.3
62						17.8		17.9		20.3			20.5		20.9	20.8	20.8	20.3	20.3	19.9	19.9						19.9	19.9
66								15.1		17.8	18.0	18.0	18.5			18.4		18.0	18.0	17.7	17.7					17.7	17.7	
70										15.6			15.8	16.3	16.3	16.2		15.8	15.7	15.7						15.7	15.7	
74										13.6			13.7		14.2	14.1	14.1	13.8	13.8	13.8						13.8	13.8	
78													11.7		12.4		12.2	12.0	12.0							12.0	12.0	
82															10.7		10.4	10.2	10.4							10.4	10.4	

RATING CHART FOR HEAVY LIFT (HL)

With standard counterweight

Unit : metric ton

Mast length m(ft)	30.48 (100)			42.67 (140)			
Boom length m(ft) Working radius (m)	42.67 (140)	48.77 (160)	54.86 (180)	60.96 (200)	67.06 (220)	73.15 (240)	79.25 (260)
9	9.3m/450.0						
10	450.0	10.2m/429.0	11.0m/396.0				
12	424.0	422.0	393.0	361.0	12.7m/322.0	13.6m/288.0	
14	357.0	355.0	324.0	323.0	322.0	288.0	14.4m/255.0
16	308.0	306.0	274.0	273.0	272.0	270.0	255.0
18	267.0	266.0	237.0	236.0	235.0	233.0	232.0
20	235.0	234.0	208.0	207.0	206.0	204.0	203.0
22	210.0	209.0	185.0	184.0	182.0	181.0	180.0
24	187.0	186.0	168.0	165.0	263.0	162.0	161.0
26	167.0	166.0	150.0	149.0	147.0	146.2	145.0
28	150.0	149.0	137.0	136.0	134.0	133.0	131.0
30	136.0	135.0	126.0	125.0	123.0	122.0	120.0
34	115.0	113.0	107.0	106.0	104.0	103.0	101.0
38	98.0	97.0	93.0	92.0	90.0	89.0	87.0
42		84.0	81.0	80.0	78.0	77.0	75.0
46			72.0	71.0	69.0	68.0	66.0
50			64.0	63.0	61.0	60.0	58.0
54				56.0	54.0	53.0	51.0
58					49.0	47.0	45.0
62						42.0	40.0
66						38.0	36.0
70							32.0
74							
78							
82							

Mast length m(ft)	54.86 (180)			
Boom length m(ft) Working radius (m)	85.34 (280)	91.44 (300)	97.54 (320)	103.6 (340)
9				
10				
12				
14	15.3m/240.0			
16	240.0	16.1m/214.0	17.0m/191.0	17.8m/172.0
18	217.0	214.0	191.0	172.0
20	190.0	189.0	187.0	172.0
22	168.0	166.0	165.0	163.0
24	150.0	148.0	147.0	145.0
26	135.0	133.0	132.0	130.0
28	122.0	121.0	119.0	118.0
30	112.0	110.0	109.0	107.0
34	94.0	92.0	91.0	89.0
38	80.0	79.0	77.0	76.0
42	69.0	67.0	66.0	64.0
46	60.0	59.0	57.0	55.0
50	53.0	51.0	49.0	48.0
54	47.0	45.0	43.0	42.0
58	41.0	39.0	38.0	36.0
62	36.0	35.0	33.0	31.0
66	32.0	31.0	29.0	28.0
70	29.0	27.0	25.0	24.0
74	25.0	24.0	22.0	21.0
78		21.0	19.0	18.0
82			17.0	15.0

Note: Ratings above the line, a double drum is required for flexing of wire rope.

With standard + additional counterweight

Unit : metric ton

Maat length m(t)	42.67 (140)			54.86 (180)				
Boom length m(t)	73.15 (240)	79.25 (260)	85.34 (290)	91.44 (300)	97.54 (320)	103.6 (340)	109.7 (360)	115.8 (380)
Working radius (m)								
12	13.6m/288.0							
14	288.0	14.4m/255.0	15.3m/240.0					
16	270.0	255.0	240.0	16.1m/214.0	17.0m/191.0	17.8m/172.0		
18	233.0	232.0	217.0	214.0	191.0	172.0	18.7m/154.0	19.5m/138.0
20	204.0	203.0	190.0	189.0	187.0	172.0	154.0	138.0
22	181.0	180.0	168.0	166.0	165.0	163.0	154.0	138.0
24	162.0	162.0	150.0	148.0	147.0	145.0	144.0	138.0
26	146.0	145.0	135.0	133.0	132.0	130.0	129.0	127.0
28	133.0	131.0	122.0	121.0	119.0	118.0	116.0	115.0
30	122.0	120.0	112.0	110.0	109.0	107.0	106.0	104.0
34	103.0	101.0	94.0	92.0	91.0	89.0	88.0	86.0
38	89.0	87.0	80.0	79.0	77.0	76.0	74.0	73.0
42	77.0	75.0	69.0	67.0	66.0	64.0	63.0	62.0
46	68.0	66.0	60.0	59.0	57.0	55.0	54.0	52.0
50	60.0	58.0	53.0	51.0	49.0	48.0	47.0	45.0
54	53.0	51.0	47.0	45.0	43.0	42.0	40.0	39.0
58	47.0	45.0	41.0	39.0	38.0	36.0	35.0	33.0
62	42.0	40.0	36.0	35.0	33.0	31.0	30.0	29.0
66	38.0	37.0	32.0	31.0	29.0	28.0	26.0	25.0
70		33.0	29.0	27.0	25.0	24.0	23.0	21.0
74			25.0	24.0	22.0	21.0	19.0	18.0
78				21.0	19.0	18.0	16.0	15.0
82					17.0	15.0	14.0	12.0

Note: Flings above the line, a double drum is required for flinging of wire rope.

RATING CHART FOR SUPER HEAVY LIFT (SHL)

Counterweight trailer 240ton x 15.6m

Unit: metric ton

Mast length m(ft)	30.48: (100)				42.67: (140)			
	42.67 (140)	48.77 (160)	54.86 (180)	60.96 (200)	67.06 (220)	73.15 (240)	79.25 (260)	
9	8.3m/450.0							
10	450.0	10.2m/429.0	11.0m/396.0					
12	450.0	429.0	396.0	362.0	12.7m/322.0	13.6m/288.0		
14	450.0	429.0	396.0	362.0	322.0	288.0	14.4m/256.0	
16	450.0	429.0	396.0	362.0	322.0	288.0	256.0	
18	441.0	429.0	396.0	362.0	322.0	286.0	254.0	
20	396.0	394.0	385.0	362.0	322.0	284.0	252.0	
22	357.0	355.0	344.0	343.0	321.0	282.0	250.0	
24	325.0	323.0	311.0	310.0	308.0	280.0	248.0	
26	297.0	295.0	283.0	282.0	280.0	278.0	246.0	
28	274.0	272.0	260.0	259.0	257.0	256.0	244.0	
30	254.0	252.0	240.8	239.0	237.0	236.0	234.0	
34	212.0	219.0	207.0	206.0	204.0	203.0	201.0	
38	173.0	194.0	181.0	180.0	178.0	177.0	175.0	
42		162.0	161.0	160.0	158.0	157.0	155.0	
46			145.0	144.0	142.0	140.0	138.0	
50			127.0	129.0	128.0	126.0	124.0	
54				118.0	116.0	114.0	112.0	
58					106.0	104.0	102.0	
62						96.0	94.0	
66						88.0	86.0	
70							80.0	
74								
78								
82								
86								
90								
94								
98								

Mast length m(ft)	54.86: (180)						
	85.34 (280)	91.44 (300)	97.54 (320)	103.6 (340)	109.7 (360)	115.8 (380)	121.9 (400)
9							
10							
12							
14	15.3m/240.0						
16	240.0	16.1m/214.0	17.0m/191.0				
18	240.0	214.0	191.0	172.0	18.7m/154.0	19.5m/138.0	19.5m/138.0
20	240.0	214.0	191.0	172.0	154.0	138.0	20.4m/119
22	240.0	214.0	191.0	172.0	154.0	138.0	119.0
24	240.0	213.0	191.0	171.0	154.0	138.0	119.0
26	239.0	212.0	191.0	170.0	153.0	138.0	119.0
28	236.0	211.0	190.0	169.0	152.0	137.0	119.0
30	224.0	210.0	189.0	168.0	151.0	136.0	119.0
34	192.0	191.0	167.0	166.0	149.0	133.0	119.0
38	167.0	166.0	165.0	163.0	145.0	129.0	115.0
42	148.0	146.0	145.0	143.0	141.0	125.0	111.0
46	132.0	130.0	129.0	127.0	126.0	121.0	107.0
50	118.0	116.0	115.0	113.0	112.0	110.0	102.0
54	107.0	105.0	104.0	102.0	101.0	99.0	97.0
58	97.0	95.0	94.0	92.0	91.0	89.0	88.0
62	89.0	87.0	86.0	84.0	83.0	81.0	79.0
66	81.0	79.0	78.0	76.0	75.0	73.0	72.0
70	75.0	73.0	72.0	70.0	69.0	67.0	65.0
74	69.0	67.0	66.0	64.0	63.0	61.0	60.0
78		62.0	61.0	59.0	58.0	56.0	55.0
82			56.0	54.0	53.0	51.0	50.0
86			52.0	50.0	49.0	47.0	46.0
90				47.0	46.0	44.0	42.0
94					42.0	40.0	38.0
98						37.0	35.0

Note: Ratings above the line, a double drum is required for hoisting of wire rope

Counterweight trailer 240ton x 20.0m

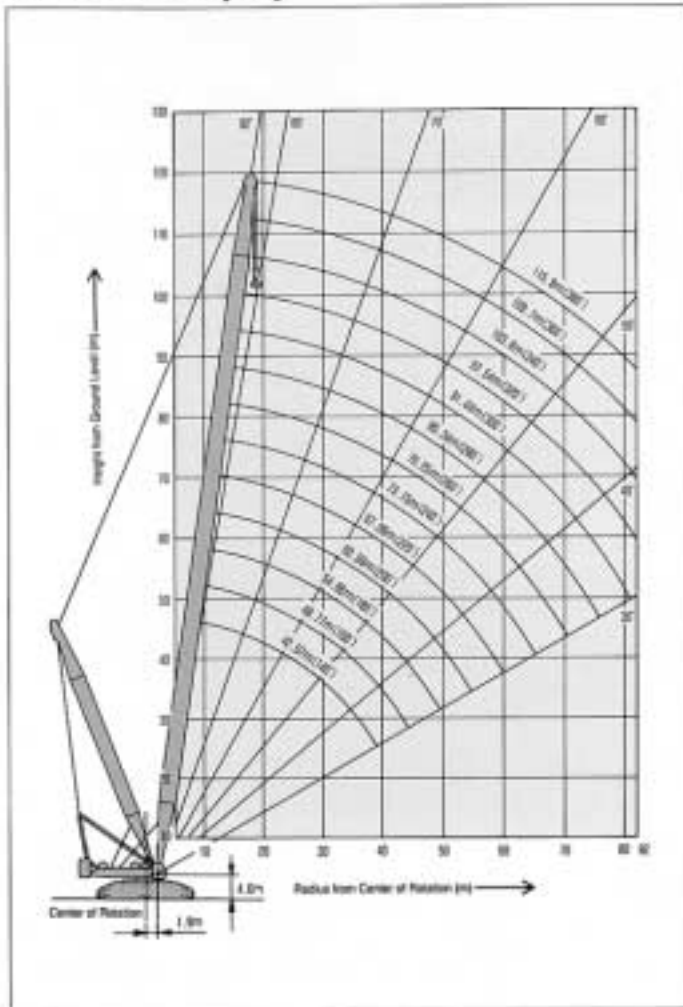
Unit : metric ton

Mast length m(t)		30.48: (100)			42.67: (140)			
Working radius (m)	Boom length m(t)	42.67 (140)	48.77 (160)	54.86 (180)	60.96 (200)	67.06 (220)	73.15 (240)	79.25 (260)
	9	9.3m/450.0						
10	450.0	10.2m/429.0	11.0m/396.0					
12	450.0	429.0	396.0	362.0	12.7m/322.0	13.6m/288.0		
14	450.0	429.0	396.0	362.0	322.0	288.0	14.4m/256.0	
16	450.0	429.0	396.0	362.0	322.0	288.0	255.0	
18	450.0	429.0	396.0	362.0	322.0	286.0	254.0	
20	436.0	429.0	396.0	362.0	322.0	284.0	252.0	
22	395.0	393.0	396.0	362.0	321.0	282.0	250.0	
24	353.0	358.0	348.0	347.0	318.0	280.0	248.0	
26	317.0	327.0	317.0	316.0	315.0	278.0	246.0	
28	286.0	300.0	291.0	290.0	289.0	275.0	244.0	
30	259.0	274.0	269.0	268.0	266.0	264.0	242.0	
34	212.0	230.0	232.0	231.0	230.0	228.0	226.0	
38	173.0	194.0	204.0	203.0	201.0	200.0	198.0	
42		162.0	175.0	180.0	178.0	177.0	175.0	
46			150.0	161.0	160.0	159.0	157.0	
50			127.0	140.0	145.0	143.0	141.0	
54				121.0	130.0	130.0	128.0	
58					113.0	119.0	117.0	
62						106.0	108.0	
66						93.0	97.0	
70							86.0	
74								
78								
82								
86								
90								
94								
98								

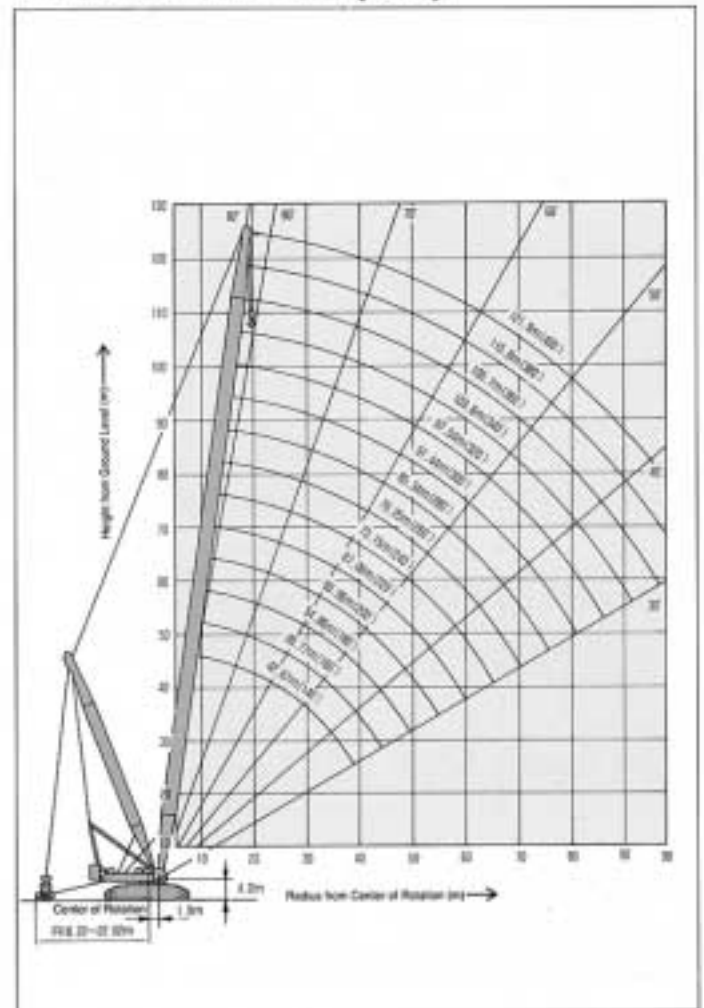
Mast length m(t)		54.86: (180)						
Working radius (m)	Boom length m(t)	85.34 (280)	91.44 (300)	97.54 (320)	103.6 (340)	109.7 (360)	115.8 (380)	121.9 (400)
	9							
10								
12								
14	15.3m/240.0							
16	240.0	16.1m/214.0	17.0m/191.0	17.8m/172.0				
18	240.0	214.0	191.0	172.0	18.7m/154.0	19.5m/138.0		
20	240.0	214.0	191.0	172.0	154.0	138.0	20.4m/119	
22	240.0	214.0	191.0	172.0	154.0	138.0	119.0	
24	240.0	213.0	191.0	171.0	154.0	138.0	119.0	
26	239.0	212.0	191.0	170.0	153.0	138.0	119.0	
28	238.0	211.0	190.0	169.0	152.0	137.0	119.0	
30	237.0	210.0	189.0	168.0	151.0	136.0	119.0	
34	212.0	208.0	187.0	168.0	149.0	133.0	119.0	
38	190.0	188.0	183.0	163.0	145.0	129.0	115.0	
42	168.0	166.0	164.0	159.0	141.0	125.0	111.0	
46	150.0	148.0	146.0	144.0	137.0	121.0	107.0	
50	135.0	133.0	131.0	130.0	126.0	116.0	102.0	
54	120.0	120.0	119.0	117.0	115.0	110.0	97.0	
58	111.0	110.0	108.0	107.0	105.0	100.0	92.0	
62	102.0	100.0	98.0	97.0	95.0	93.0	87.0	
66	94.0	92.0	90.0	89.0	87.0	85.0	81.0	
70	84.0	84.0	83.0	82.0	80.0	78.0	75.0	
74	75.0	75.0	75.0	75.0	74.0	72.0	69.0	
78		69.0	69.0	69.0	68.0	66.0	63.0	
82			63.0	63.0	63.0	61.0	58.0	
86			56.0	56.0	56.0	55.0	54.0	
90				50.0	50.0	50.0	49.0	
94					46.0	46.0	45.0	
98						41.0	40.0	

WORKING RANGES

HEAVY LIFT (HL)



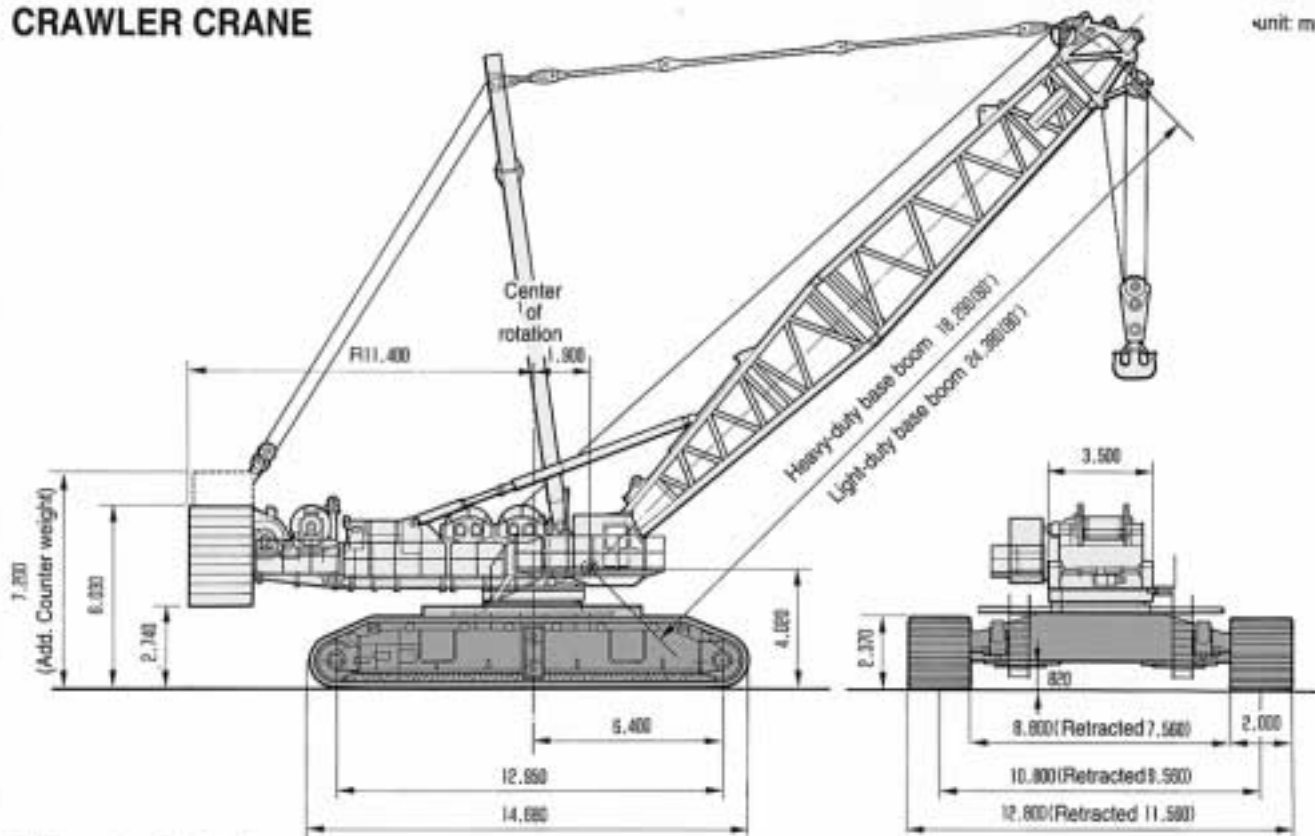
SUPER HEAVY LIFT (SHL)



General Dimensions

CRAWLER CRANE

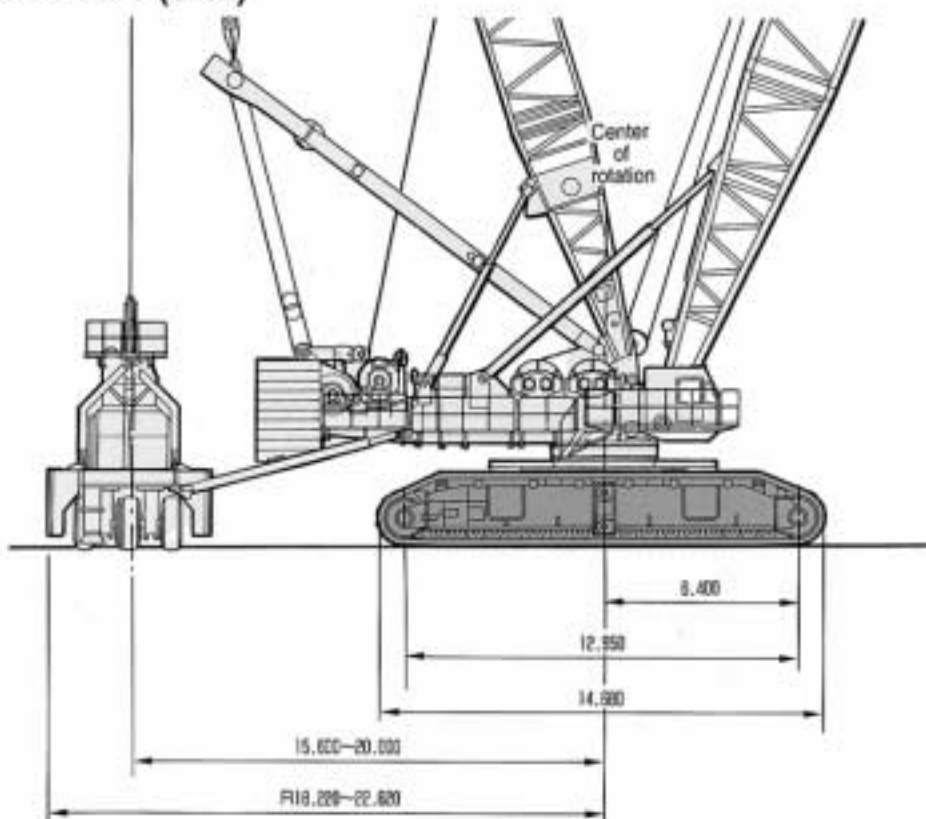
unit: mm



※ Figures show light-duty boom specs.

SUPER HEAVY LIFT (SHL)

unit: mm



Main Specifications

Specifications		Crane	Luffing Jib	HL	SHL
Capacity					
Max. Lifting Capacity	ton x m	750 x 5.6 (Heavy) 450 x 10.0 (light)	230 x 22.0 (Fixed) 230 x 16.0 (Variable)	450 x 10.0	450 x 18.0
Basic Boom Length	m	18.29 (Heavy) 24.38 (light)	30.48 (24.38m jib)	42.67 (30.48m mast)	42.67 (30.48m mast)
Max. Boom Length (+ Jib Length)	m	42.67 (Heavy) 97.54 (light)	85.34 + 73.15	115.8 (54.86m mast)	121.9 (54.86m mast)
Working speed	Main Hook Line speed (High/Low)	m/min	57/97	57/97	57/97
	Aux. Hook Line speed (High/Low)	m/min	57/97	57/97	-
	Boom Hoist/Lowering speed	m/min	26 x 2	26 x 2	35 x 2
	Jib Hoist/Lowering speed	m/min	-	35	-
	Mast Hoist/Lowering speed	m/min	-	-	26 x 2
	Swing Speed	rpm	-	0.6	-
	Travel Speed (High/Low)	km/h	-	0.3/0.6	-
Operating weight	ton	598 (24.38m light duty boom with 450 ton hook)	720 (85.34m boom + 73.15m jib with 450 ton hook)	720 (115.8m boom + 54.86m mast)	686 (with 121.9m boom and 230 ton hook)
Ground Pressure (w/o load)	ton/cm ²	10.8	13.1	13.1	12.5
Wire Rope					
Main hoist wire rope dia meter	mm φ	32	32	32	32
Aux. hoist wire rope dia meter	mm φ	32	32	-	32
Wire rope dia meter for boom hoist	mm φ	28	28	28	28
Boom guy line dia meter	mm φ	-	Link type	-	-
Wire rope dia meter for jib hoist	mm φ	-	28	-	-
Jib guy line dia meter	mm φ	-	54 (4-line)	-	-
Wire rope dia meter for mast	mm φ	-	-	28	28
Mast guy line	mm φ	-	-	Link type	Link type
Strut guy line dia meter	mm φ	-	-	-	-
Counterweight trailer hunger rope	mm φ	-	50 (4-line)	-	58 (4-line)
Drive Device					
Engine	Model	CUMMINS KTA-19-C600			
	Rated power output	PS/rpm	600/2,000		
	Fuel tank capacity	liters	620 (front)/380 (rear)		
Hydraulic pump	Hoist, boom hoist, No.4 drum hoist, No.5 drum hoist, and travel	2-variable displacement pumps x 4			
	Swing	2-speed variable displacement pumps x 1			
	Control, and Aux. equip.	4 - gear pump			
Hydraulic motors	Hoist	2 - speed plunger motor x 4			
	Boom hoist	Plunger motor x 2			
	No.4 drum hoist	Plunger motor x 1			
	No.5 drum hoist	Plunger motor x 1			
	Swing	Plunger motor x 3			
	Travel	2 - speed plunger motor x 8			
Counterweight					
Counterweight equipped with base machine	ton	Std. counterweight 168.0/additional counterweight 37.0			Std. counterweight 168.0
Counterweight trailer					
Weight	ton	-			Approx. 240.0
Tire	m	-			Pneumatic tire (21.00-25-44PR) 4 x 2
Mounting position (Center of rotation to center of trailer)	m	-			15.8/18.0/20.0
Tail rotating radius		-			18.20/20.80/22.62

Remarks : *1 (Heavy) : Heavy-duty boom, (Light) : Light-duty boom

*2 The main hoist, auxiliary hoist, boom hoist, jib hoist and travel speeds vary according to the load being lifted.

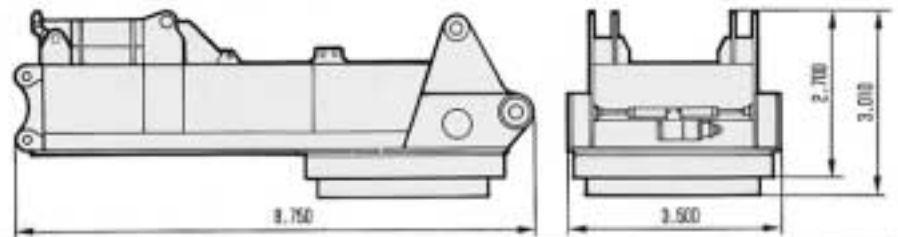
Description		Width x Height x Length (mm x mm x mm)	Weight (metric ton x piece)
ATTACHMENTS			
HOOK	450 ton Hook	1,800 x 1,000 x 3,400	9.1 x 1
	230 ton Hook	1,100 x 1,000 x 2,700	6.6 x 1
	100 ton Hook	800 x 300 x 2,300	4.6 x 1
	50 ton Hook	300 x 1,000 x 2,000	2.4 x 1
	16.5 ton Hook	450 ϕ x 1,600	0.94 x 1
BOOM	Lower box type mast	2,500 x 900 x 12,200	7.5 x 1
	Lower boom	3,400 x 3,000 x 12,600	12.5 x 1
	6.10 m (20') Boom Insert	3,200 x 3,000 x 6,400	3.5 x 1
	12.19 m (40') Boom Insert	3,200 x 3,000 x 12,500	6.1 x 8*
	10.67 m (34') Boom jib	3,200 x 3,000 x 10,900	6.1 x 1
	Upper boom	3,000 x 3,000 x 4,000	8.9 x 1
JIB	Lower jib	3,300 x 2,500 x 9,300	5.5 x 1
	6.10 m (20') Jib Insert	2,500 x 2,500 x 6,200	2.0 x 1
	12.19 m (40') Jib Insert	2,500 x 2,500 x 12,300	3.5 x 4
	10.67 m (34') Upper jib	2,500 x 2,500 x 10,000	7.0 x 1
	Front upper strut	1,400 x 1,400 x 7,200	2.5 x 1
	Rear upper strut	1,400 x 1,400 x 7,200	3.0 x 1
	Lower strut	1,700 x 1,400 x 6,700	1.1 x 2
	Intermediate strut	1,400 x 1,400 x 3,200	0.3 x 2
MAST	Lower Mast	3,400 x 2,600 x 9,500	9.0 x 1
	Jib folding support	3,400 x 2,300 x 2,800	2.9 x 1
	12.19m (40') Intermediate mast	2,600 x 2,600 x 12,400	3.8 x 3
	Upper mast	2,600 x 2,600 x 11,000	7.1 x 1
* 7 numbers for Crane spec / 8 numbers for SHL spec.			
COUNTERWEIGHT TRAILER			
Trailer	3,300 x 2,900 x 8,200	45.0 x 1	
Weight	2,000 x 60 x 6,000	7.0 x 19	
Side balance weight	1,200 x 2,400 x 1,100	8.5 x 2	
Side balance weight	1,000 x 1,300 x 1,600	7.5 x 2	
Side balance weight	1,100 x 2,400 x 2,200	15.0 x 2	
Hanger frame	400 x 3,800 x 3,300	1.8 X 2	
Conection beam	1,300 x 800 x 6,800	4.0 X 2	

Weight and Measurement for Transportation

Unit: mm

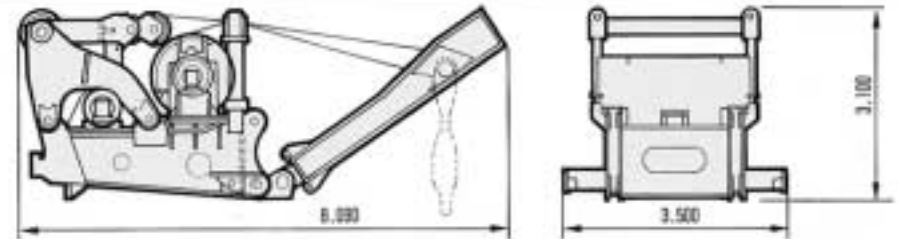
Upper frame (front)

Weight: 44.5 metric ton × 1
※ Swing bearing (13.5 metric ton) is not included.



Upper frame (rear)

Weight: 41.4 metric ton × 1
※ Upper mast (8.2 metric ton) is included.



Raising drum

Weight (front): 13.3 metric ton × 1
※ 1,600 mm ϕ wire rope (8 metric ton) is included.
Weight (rear): 11.3 metric ton × 1
※ 1,200 mm ϕ wire rope (6 metric ton) is included.



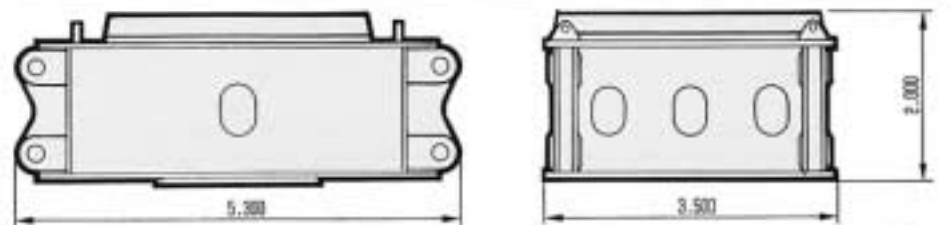
Cab

Weight: 3.0 metric ton × 1
※ Cab base and add. plat from are included.



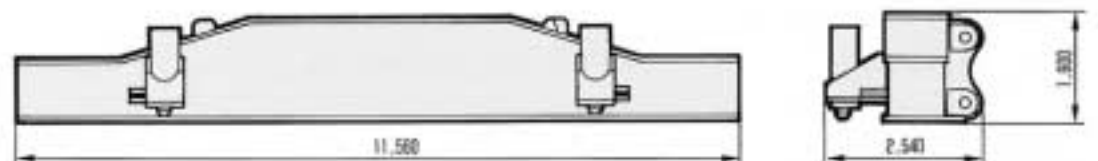
Carbody

Weight: 34.2 metric ton × 1



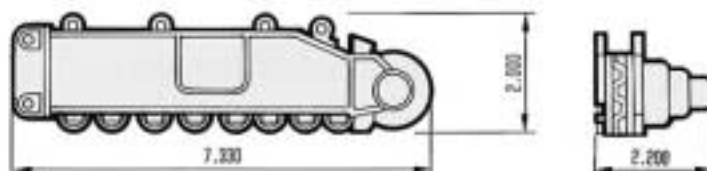
Axles

Weight: 23.8 metric ton × 1
※ Jack cylinder are included.



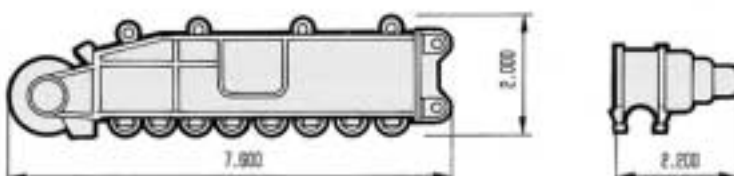
Crawler assembly (front)

Weight: 28.6 metric ton



Crawler assembly (rear)

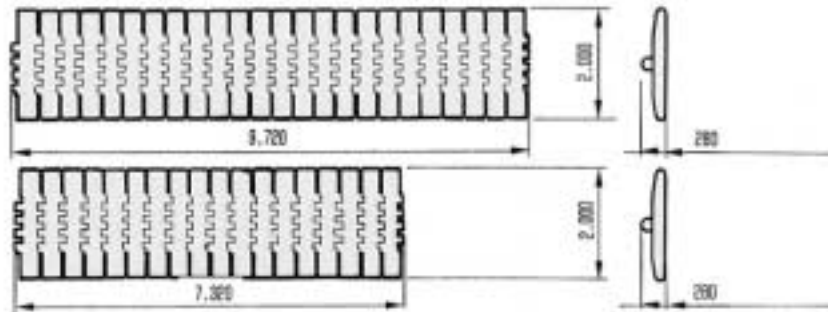
Weight: 29.9 metric ton



Track shoes

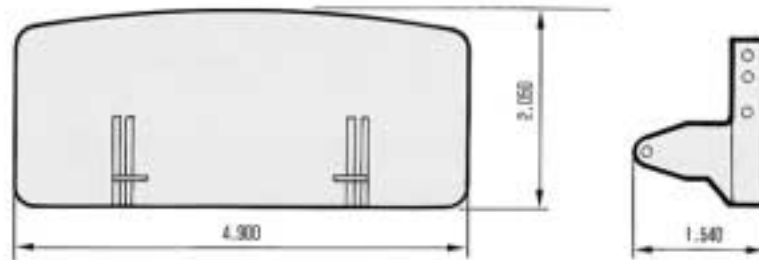
Weight: 7.7 metric tonx6

Weight: 10.3 metric tonx2



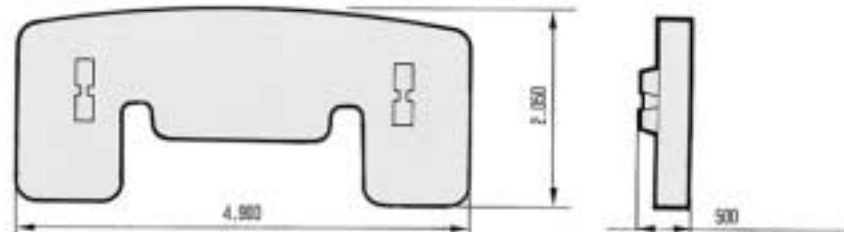
Counterweight base

Weight: 19.5 metric ton



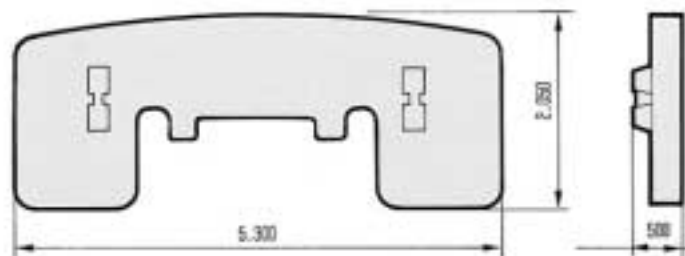
Counterweight (A)

Weight: 16.1 metric tonx3



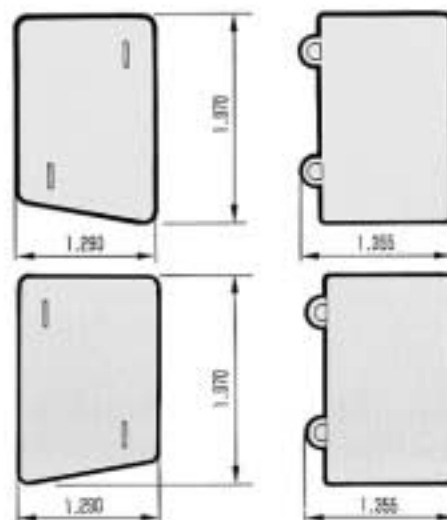
Counterweight (B)

Weight: 16.7 metric tonx6



Additional countweight

Weight: 18.5 metric tonx2



KOBELCO

7800

NOTE: Due to our policy of continual product improvement, all designs and specifications are subject to change without advance notice. Data herein is informational in nature and shall not be construed to warrant suitability of the machine for any particular purpose as performance may vary with the conditions encountered. These statements are correct at time of going to press.

KOBELCO CONSTRUCTION MACHINERY CO., LTD.

3-13, Nihonbashi 1-chome, Chuo-ku, Tokyo, 103-8246 JAPAN
Tel:(03)3278-7080 / Fax:(03)3278-7138

Bulletin No. 7800CC-102

Q10401TF Printed in Japan