






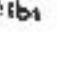


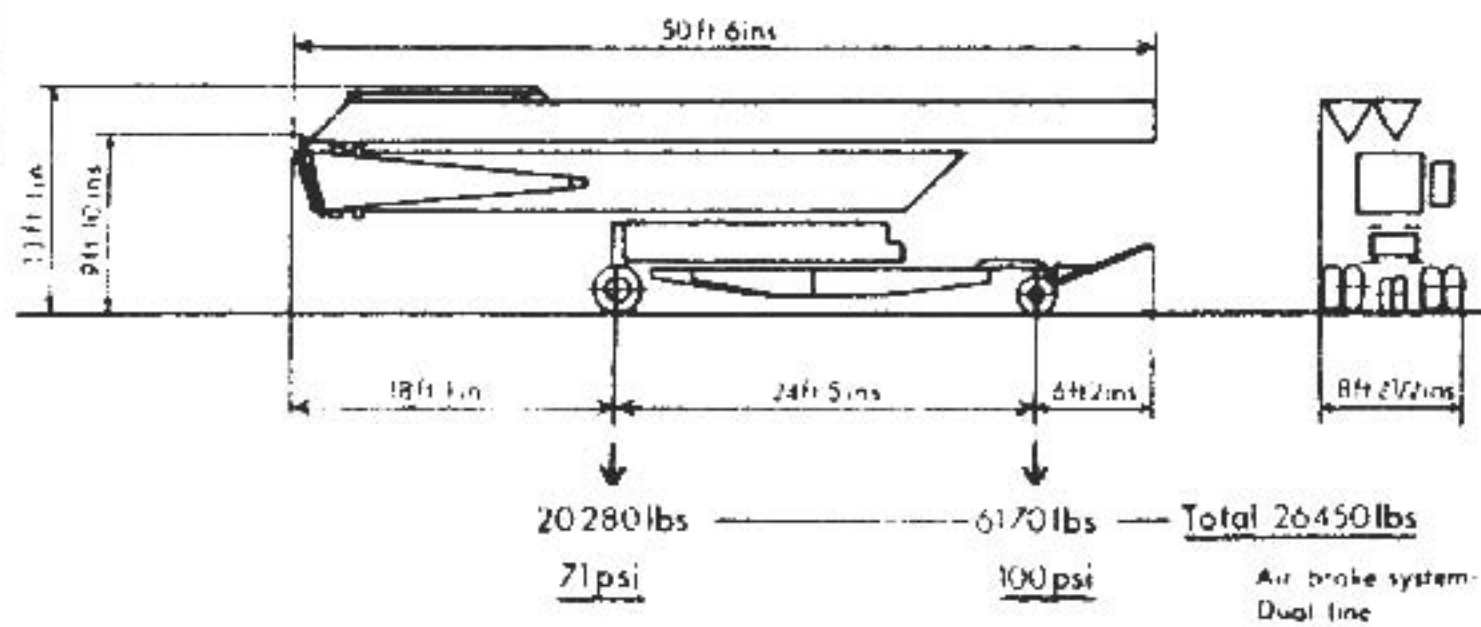

 3 x 400V · 50Hz  
 $\frac{1}{2}$  63A


 22 x 2200 = 48400 lbs

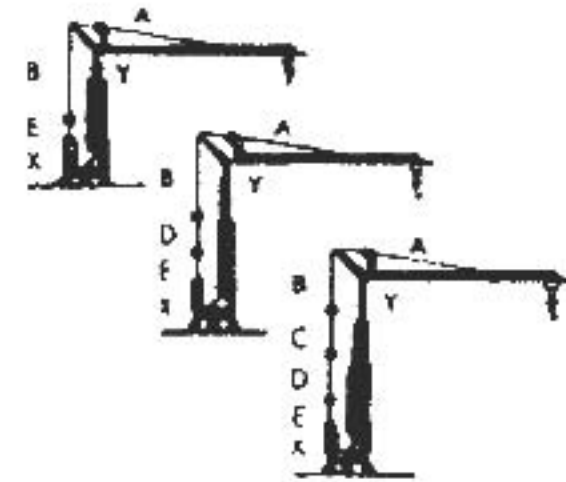
	0,9 rpm
	78 - 150 ft/min
	20 ft/min
	19,5 kW
	22,5 kW

0 - 2200 lbs		20 - 90 - 180 ft/min
2200 - 4400 lbs		20 - 90 ft/min
0 - 4400 lbs		10 - 45 - 90 ft/min
4400 - 8800 lbs		10 - 45 ft/min

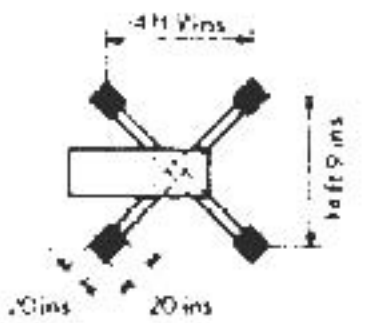
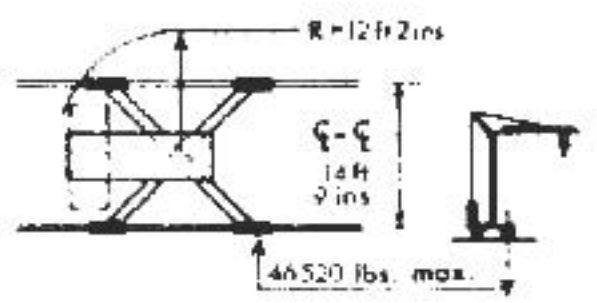
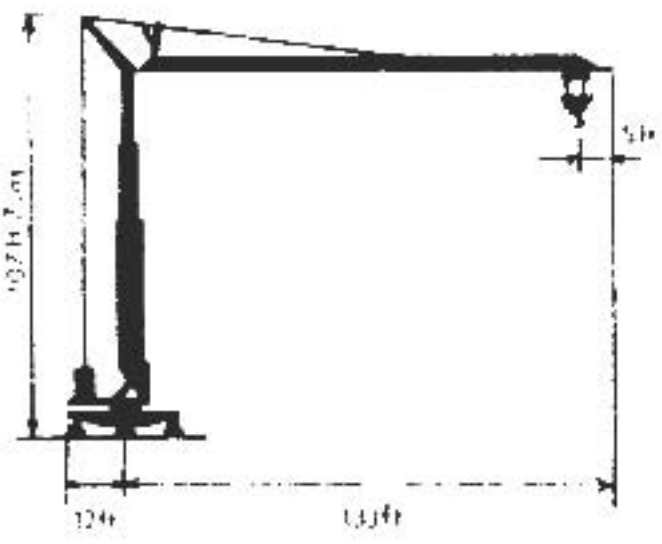
Replaces:  
 Applies from  
 No. 106  
**K 36 - 39**  
 N.A.  
 81 09 17



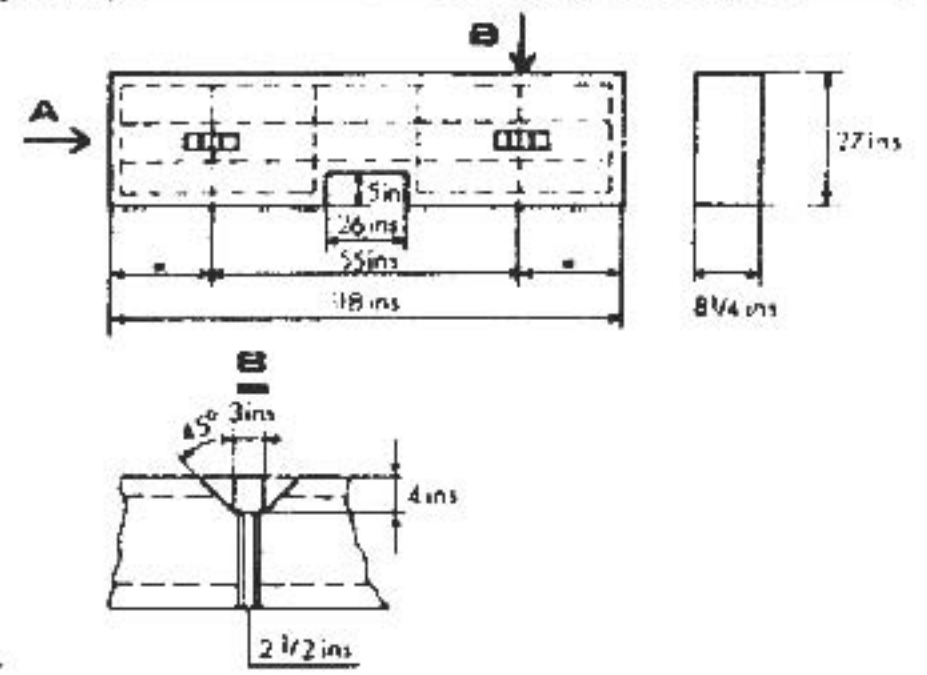
K36-39 fitted with heavy wheel equipment



- (Dio. 1/8 in)
- A - #28 (x 2) - 21.80 m (71 ft 3 ins)
  - B - #28 (x 2) - 17.87 m (58 ft 1 1/2 ins)
  - C - #28 (x 2) - 7.87 m (25 ft 10 ins)
  - D - #28 (x 2) - 5.01 m (16 ft 5 ins)
  - E - #28 (x 2) - 1.80 m (5 ft 11 ins)
  - X - #28 (x 2) - 3.93 m (12 ft 11 ins)
  - Y - #28 - 3.01 m (9 ft 10 1/2 ins)



**2200 lbs**



- ONE METER (m) = 3.281 ft
- METRIC TON (t) = 2205 lbs

• ALL FIGURES ON THIS SHEET ARE CONVERTED FROM METRIC

- CONCRETE QUALITY  $\sigma_c \leq 4250$  lbs. sq ft.
- CONCRETE: 50 lbs/cu. ft.
- ALL SHARP EDGES SHOULD BE CHAMFERED
- MARK THE CHECKED WEIGHT ON THE BLOCKS