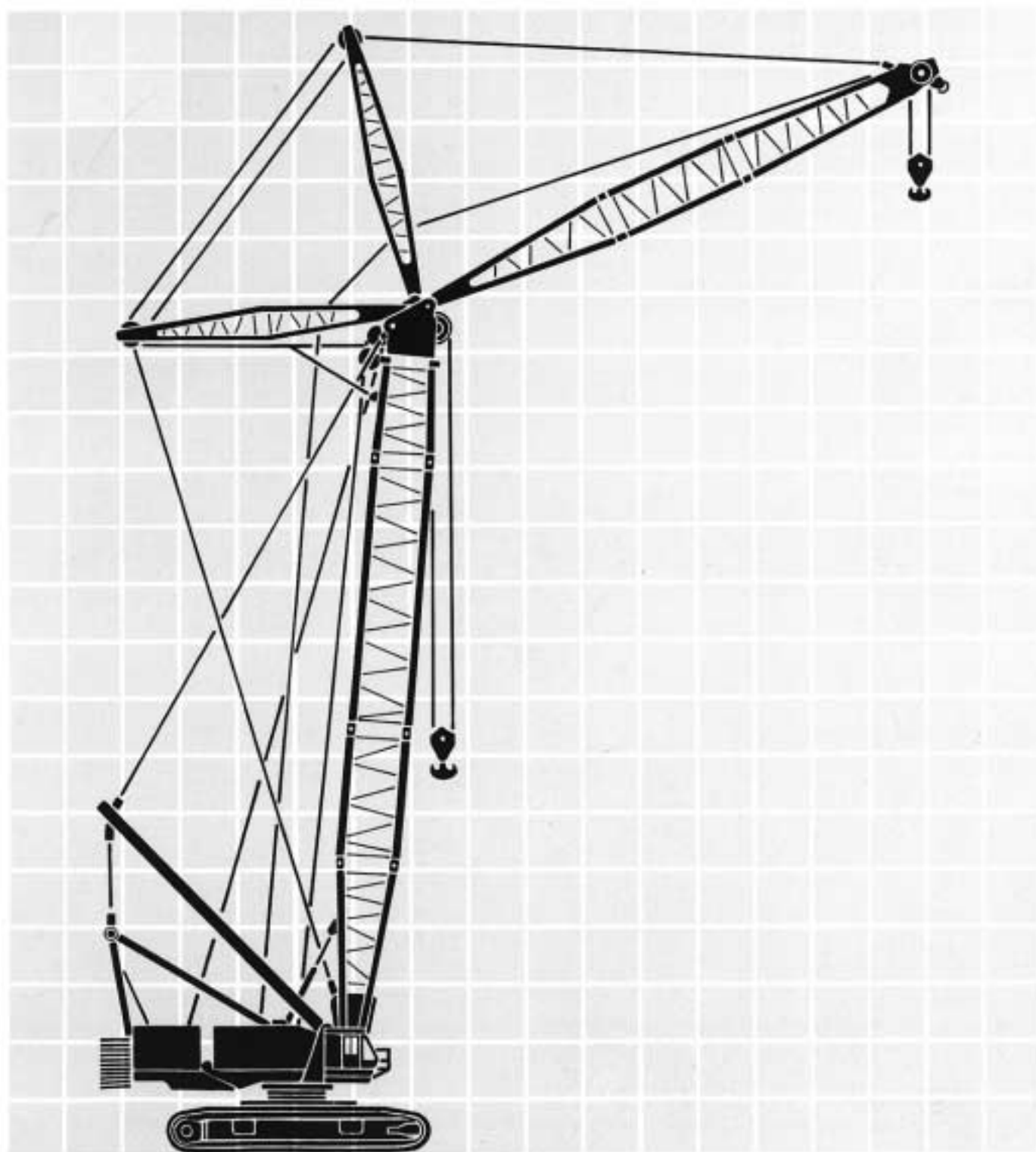


**KOBELCO**

# **7450**

## **Hydraulic Crawler Crane**



# Puts big lifts within reach

## Luffing Jib

### Working ranges

#### Unbeatable lifting capacity

The lift enhancer attachment endows the 7450 with its unbeatable lifting capacity for crawler mounted cranes.

#### Fast assembly and disassembly

The whole machine is of modular construction which permits very fast assembly and disassembly. A hydraulic pin-jacking system is incorporated to make the job even easier.

#### Precisely controllable hydraulic drum drive

The 7450 uses a hydraulic drum drive to give precise control of lifting speed according to the control lever position and imparting particularly smooth lifting characteristics.

#### Spacious, well planned cab for comfortable operation

The operator's cab is well ventilated and comfortably laid out, being separated from the machinery compartment to prevent the intrusion of noise and vibration.

#### New lifting and tilting cab

1.5m of vertical adjustment is built into the cab which can also be tilted backwards for optimum operating visibility. A high-backed reclining seat is fitted in the cab with forward and backward adjustment to suit the most comfortable working position of each operator.

#### Versatile operation

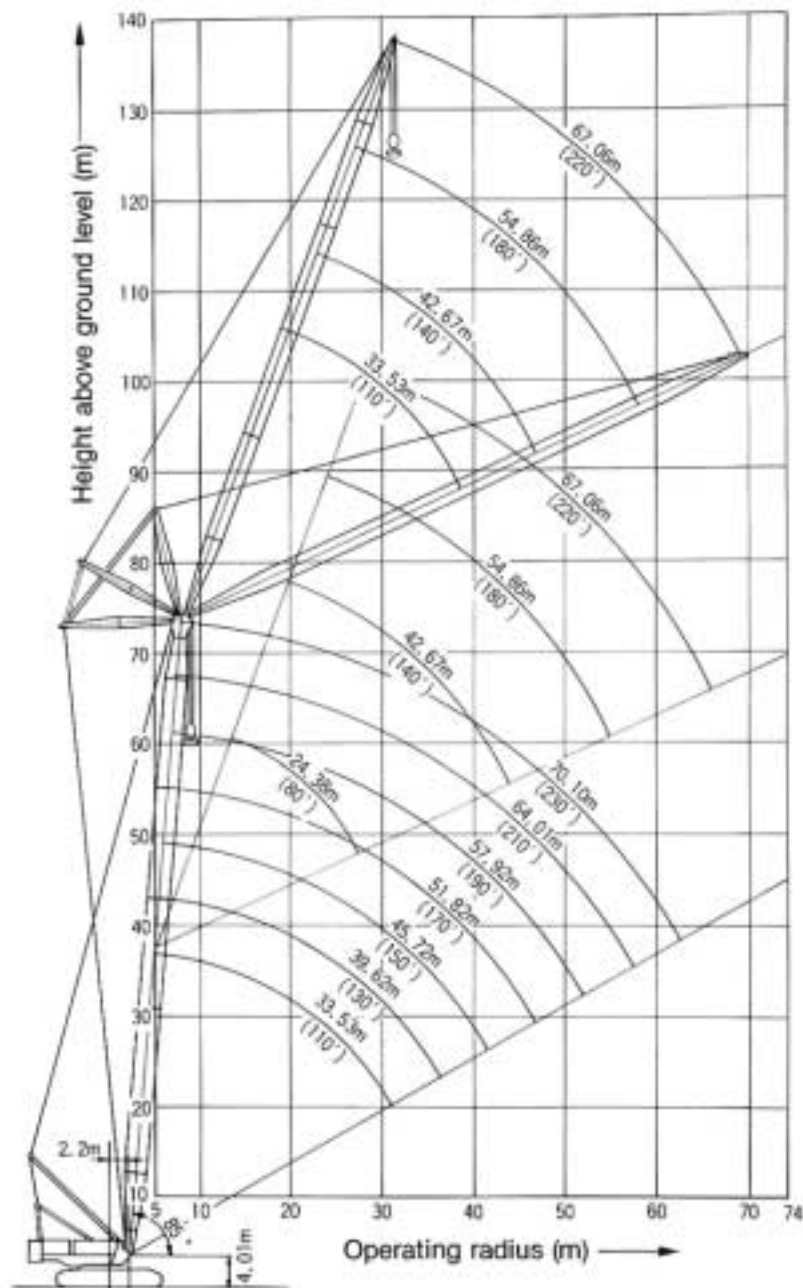
A wide variety of attachments makes the 7450 extremely versatile, with fittings for boom, fixed jib and luffing jib all available.

#### Low fuel consumption

The turbocharged, direct injection diesel engine was particularly selected for its fuel economy, and delivers power on demand with low fuel consumption.

#### Consistently powerful and reliable lifting performance

From hook to tracks, the 7450 is engineered for top class lifting performance, easy maintenance and operating safety.



- Notes:
1. Operating radius is the horizontal distance from the centerline through the center of gravity of the load.
  2. Ratings do not exceed 75% of tipping load. Deduct weight of hook block(s), slings and all other load handling accessories from main boom or jib ratings shown.
  3. Ratings shown are based on freely suspended loads and make no allowance for such factors as wind effect on lifted load, out-of-level ground conditions, operating speeds or any other condition that could be detrimental to the safe operation of this equipment. The operator, therefore, has the responsibility to judge the existing conditions and reduce lifted loads and operating speeds accordingly.
  4. No operation is possible in the ranges indicated by blank spaces in the chart.
  5. Boom inserts and guy cables must be arranged as shown in the "Owner and Operator's Manual."
  6. When boom is equipped with jib, main hook ratings are determined by considering weight of jib and jib hook block. To obtain actual hoistable loads, deduct weight of main hook block, slings and all other load handling accessories from ratings shown. Erection weight (10t) is required when boom length is 91.44m or longer.
  7. Actual hoistable loads using the luffing jib must be calculated by deducting the weight of auxiliary hook block, slings and all other load handling accessories from ratings shown.
  8. Luffing jib ratings are based on a main boom angle of 85°. Erection weight (10t) is required when boom length is 64.01m or longer.
  9. When boom is equipped with jib, main hook ratings are determined by considering weight of jib and jib hook block. To obtain actual hoistable loads, deduct weight of main hook block, slings and all other load handling accessories from ratings shown.

## Lifting capacity

### Rated crane loads in metric ton—main

Unit: ton

Operating Radius in Meters	18.29m (60') Boom	24.36m (80') Boom	30.48m (100') Boom	36.58m (120') Boom	42.67m (140') Boom	48.77m (160') Boom	54.86m (180') Boom	60.96m (200') Boom	67.06m (220') Boom	73.15m (240') Boom	79.25m (260') Boom	85.34m (280') Boom	91.44m (300') Boom	97.57m (320') Boom	Operating Radius in Meters
5.8	450.0														5.8
6	439.0														6
7	383.0	382.6													7
8	335.0	335.0	330.0												8
9	295.0	295.0	295.0	312.0											9
10	263.0	263.0	263.0	261.9	181.0	111.0									10
12	208.0	206.0	206.0	205.1	201.0	198.3	122.0	132.0							12
14	165.9	165.9	165.9	165.7	164.2	161.9	158.5	157.3	132.0	132.0					14
16	136.3	136.2	136.1	135.8	135.5	135.9	133.9	131.8	130.0	120.8	114.0				16
18	115.2	115.2	114.9	114.5	114.2	114.5	114.2	112.8	111.1	109.4	99.0	92.4	85.0		18
20		99.5	99.0	98.5	98.2	98.5	98.1	97.6	96.5	94.8	93.4	89.8	79.4	66.0	20
22		87.2	86.7	86.1	85.7	86.0	85.6	85.1	84.6	83.2	81.9	80.4	77.0	66.0	22
24			76.8	76.2	75.8	76.0	75.6	75.1	74.6	73.8	72.5	71.0	70.0	66.0	24
26			68.8	68.1	67.7	67.6	67.4	66.9	66.3	65.7	64.6	63.2	62.1	60.5	26
28			62.1	61.4	60.9	61.1	60.6	60.0	59.5	58.8	58.0	56.6	55.5	54.0	28
30				55.8	55.2	55.3	54.9	54.3	53.7	53.0	52.4	51.0	49.9	48.3	30
34				46.8	46.2	46.2	45.7	45.0	44.5	43.7	43.2	41.8	40.8	39.2	34
38					39.3	39.3	38.7	38.0	37.4	36.6	36.1	34.7	33.7	32.2	38
42						33.9	33.2	32.5	31.9	31.1	30.3	29.0	28.0	26.5	42
46							28.9	28.1	27.4	26.8	25.6	24.3	23.3	21.9	46
50								24.4	23.7	22.6	21.7	20.4	19.4	18.1	50
54								20.8	20.3	19.2	18.3	17.1	16.1	14.8	54
58									17.1	16.2	15.4	14.2	13.3	12.0	58
62										13.5	12.8	11.7	10.8	9.5	62
66											10.5	9.4	8.6	7.4	66

- Notes: 1. Full rated load of the light duty boom is 230 metric ton.  
2. Mid-point support (centerhitch) is required when the main boom length is 85.34m or longer.

### Luffing jib rated loads in metric ton—360° work areas

Unit: ton

Operating Radius in Meters	33.53m (110') Boom														Operating Radius in Meters	
	24.38m (80') Jib	27.43m (90') Jib	30.48m (100') Jib	33.53m (110') Jib	36.58m (120') Jib	39.62m (130') Jib	42.67m (140') Jib	45.72m (150') Jib	48.77m (160') Jib	51.82m (170') Jib	54.86m (180') Jib	57.91m (190') Jib	60.96m (200') Jib	64.01m (210') Jib		67.06m (220') Jib
14	99.0															14
16	99.0	90.9	84.0													16
18	85.6	87.6	81.0	74.5												18
20	84.9	84.8	78.3	72.0	66.7	61.3										20
22	73.3	73.7	74.0	69.8	64.6	59.3	55.0	49.5								22
24	64.0	64.4	64.7	65.5	62.6	57.4	53.2	48.9	44.7	41.0						24
26	56.5	57.0	57.3	58.0	56.0	55.5	51.4	47.3	43.1	39.6	36.5	33.4				26
28	50.3	50.8	51.3	51.9	51.9	52.5	49.7	45.6	41.6	38.1	35.2	32.1	28.9	26.4		28
30		45.7	46.2	46.7	46.8	47.3	47.4	44.1	40.1	36.8	33.9	30.9	27.8	25.3	23.0	30
34			38.1	38.7	38.8	39.2	39.3	39.1	37.4	34.1	31.4	28.6	25.7	23.3	21.0	34
38					32.7	33.1	33.2	33.0	33.5	31.7	29.1	26.4	23.7	21.4	19.2	38
42						28.3	28.5	28.3	28.8	28.5	27.0	24.4	21.8	19.6	17.5	42
46								24.5	24.9	24.7	24.5	22.5	20.1	17.9	15.9	46
50									20.5	20.4	20.4	20.1	18.5	16.4	14.5	50
54										16.7	16.7	16.5	16.3	15.0	13.1	54
58												13.5	13.3	12.8	11.9	58
62													10.7	10.3	9.8	62
66															7.6	66

Operation of this equipment in excess of the rated loads or disregard of operating instructions voids the warranty.

- Actual hoistable loads using the fixed jib must be calculated by deducting the weight of main and auxiliary hook blocks, slings and all other load handling accessories from ratings shown.
- During heavy lifting operation, a center hitch is necessary if boom length exceeds 91.44m.
- During super heavy lifting operation, the same mast can be used as that used during heavy lifting, but a special mast insert must be used to obtain the necessary mast length. In addition, a lift enhancer is connected to the back of the crawler for added stability.
- Generally booms must be erected over end of crawlers.

#### 14. Hook block weight (ton)

Hook blocks	450t use	230t use	100t use	50t use	16.5t use
Weight (Metric ton)	8	4.5	2.5	1.5	0.9

#### 15. Max. hoisting load per hoist rope (ton)

Max. no. ropes	1	2	3	4	5	6	7	8	9	10	11	12
Max. loads (Metric ton)	16.5	33	49.5	66	82.5	99	115.5	132	148.5	165	181.5	198
Max. no. ropes	13	14	15	16	17	18	20	22	24	26	28	
Max. loads (Metric ton)	214.5	231	247.5	264	280.5	297	330	363	396	429	450	

# Luffing Jib

## Luffing jib rated loads in metric ton—360° work areas

Unit: ton

Operating Radius in Meters	39.62m (130') Boom														Operating Radius in Meters
	27.43m (90') Jib	30.48m (100') Jib	33.53m (110') Jib	36.58m (120') Jib	39.62m (130') Jib	42.67m (140') Jib	45.72m (150') Jib	48.77m (160') Jib	51.82m (170') Jib	54.86m (180') Jib	57.91m (190') Jib	60.96m (200') Jib	64.01m (210') Jib	67.06m (220') Jib	
16	91.7														16
18	88.3	81.2	75.0												18
20	85.3	78.4	72.5	67.1	61.7										20
22	76.7	76.0	70.2	65.0	59.7	55.3	49.5								22
24	66.9	68.0	68.1	63.0	57.7	53.5	49.2	45.0	41.3						24
26	59.0	60.0	60.1	60.1	55.8	51.7	47.5	43.4	39.8	36.7	33.6				26
28	52.5	53.5	53.6	53.6	54.0	50.0	45.9	41.9	38.4	35.4	32.3	29.1	26.5		28
30	47.1	48.1	48.2	48.6	48.8	48.3	44.3	40.4	37.0	34.1	31.1	28.0	25.5	23.1	30
34		39.5	39.7	39.8	40.3	40.4	40.2	37.6	34.4	31.6	28.8	25.9	23.4	21.2	34
38				33.5	33.9	34.0	33.9	34.4	31.9	29.3	26.6	23.8	21.5	19.4	38
42					29.0	29.1	29.0	29.5	29.2	27.2	24.5	21.9	19.7	17.6	42
46						25.1	25.0	25.5	25.3	25.0	22.6	20.2	18.0	16.0	46
50								21.4	21.3	21.3	20.9	18.6	16.5	14.6	50
54									17.5	17.5	17.2	17.0	15.1	13.2	54
58											14.0	13.8	13.3	11.9	58
62												11.1	10.7	10.1	62
66														7.9	66

Unit: ton

Operating Radius in Meters	45.72m (150') Boom														Operating Radius in Meters
	30.48m (100') Jib	33.53m (110') Jib	36.58m (120') Jib	39.62m (130') Jib	42.67m (140') Jib	45.72m (150') Jib	48.77m (160') Jib	51.82m (170') Jib	54.86m (180') Jib	57.91m (190') Jib	60.96m (200') Jib	64.01m (210') Jib	67.06m (220') Jib		
18	81.8														18
20	79.0	73.0	67.6												20
22	76.4	70.6	65.4	60.1	55.7										22
24	70.6	68.5	63.3	58.1	53.8	49.1	45.2								24
26	62.2	62.2	61.3	56.2	52.0	47.4	43.7	40.1	36.9						26
28	55.3	55.3	55.4	54.3	50.3	45.8	42.1	38.6	35.6	32.0	29.3				28
30	49.5	49.7	49.7	50.4	48.6	44.2	40.7	37.2	34.3	30.8	28.2	25.6	23.3		30
34	40.6	40.8	40.9	41.4	41.5	41.2	37.8	34.6	31.8	28.5	25.8	23.6	21.3		34
38		34.1	34.3	34.8	34.9	35.4	35.2	32.1	29.5	26.3	24.0	21.7	19.5		38
42				29.6	29.7	30.2	30.1	29.8	27.3	24.3	22.1	19.8	17.7		42
46					25.8	26.1	26.0	25.8	25.3	22.5	20.3	18.2	16.1		46
50							22.2	22.0	22.0	20.8	18.7	16.6	14.6		50
54								18.1	18.1	17.8	17.2	15.2	13.3		54
58									14.8	14.5	14.2	13.7	12.0		58
62											11.5	11.0	10.4		62
66												8.6	8.1		66

Unit: ton

Operating Radius in Meters	51.82m (170') Boom														Operating Radius in Meters
	30.48m (100') Jib	33.53m (110') Jib	36.58m (120') Jib	39.62m (130') Jib	42.67m (140') Jib	45.72m (150') Jib	48.77m (160') Jib	51.82m (170') Jib	54.86m (180') Jib	57.91m (190') Jib	60.96m (200') Jib	64.01m (210') Jib	67.06m (220') Jib		
18	82.8														18
20	79.9	73.5	68.0												20
22	77.3	71.1	65.8	60.5	56.0										22
24	72.1	68.9	63.7	58.5	54.2	49.5	45.5								24
26	63.3	64.3	61.7	56.5	52.3	48.1	44.0	40.3	37.2						26
28	56.3	57.1	57.1	54.7	50.8	46.5	42.4	38.9	35.8	32.2	29.5				28
30	50.4	51.1	51.1	51.8	48.9	44.9	40.9	37.5	34.5	31.0	28.4	25.8			30
34	41.4	41.8	41.9	42.5	42.5	41.8	38.1	34.8	32.0	28.7	26.2	23.7	21.5		34
38		34.8	35.0	35.5	35.6	34.8	35.5	32.3	29.7	26.5	24.1	21.8	19.6		38
42				30.2	30.3	30.2	30.8	30.0	27.5	24.5	22.2	20.0	17.9		42
46					26.1	26.0	26.5	26.0	25.5	22.6	20.4	18.3	16.3		46
50						22.5	22.8	22.5	22.5	20.9	18.8	16.7	14.7		50
54								18.5	18.5	18.2	17.3	15.2	13.3		54
58									15.1	14.8	14.5	13.9	12.1		58
62											11.7	11.2	10.6		62
66												8.8	8.2		66
70													6.2		70

Operation of this equipment in excess of the rated loads or disregard of operating instructions voids the warranty.

**Luffing jib rated loads in metric ton—360° work areas**

Unit: ton

Operating Radius in Meters	57.91m (190') Boom												Operating Radius in Meters
	33.53m (110') Jib	36.58m (120') Jib	39.62m (130') Jib	42.67m (140') Jib	45.72m (150') Jib	48.77m (160') Jib	51.82m (170') Jib	54.86m (180') Jib	57.91m (190') Jib	60.96m (200') Jib	64.01m (210') Jib	67.06m (220') Jib	
20	66.0												20
22	66.0	66.0	60.9										22
24	66.0	64.1	58.9	54.5	49.5								24
26	66.0	62.1	56.9	52.7	48.4	44.2	40.6						26
28	58.8	58.9	55.0	50.9	46.8	42.7	39.1	36.1	32.4				28
30	52.6	52.6	53.2	49.2	45.1	41.2	37.7	34.7	31.2	28.6	26.0		30
34	42.8	42.9	43.5	43.6	42.1	38.3	35.0	32.2	28.9	26.4	23.9	21.6	34
38	35.6	35.8	36.3	36.4	36.3	35.7	32.5	29.8	26.7	24.3	22.0	19.7	38
42		30.2	30.8	31.0	30.8	31.4	30.2	27.6	24.7	22.4	20.1	18.0	42
46				26.6	26.5	27.0	26.8	25.6	22.8	20.6	18.4	16.4	46
50					22.9	23.2	23.0	23.0	21.0	18.9	16.8	14.8	50
54							18.9	18.8	18.5	17.4	15.3	13.4	54
58								15.4	15.1	14.7	14.0	12.1	58
62									12.1	11.8	11.3	10.7	62
66											8.8	8.3	66
70												6.2	70

Unit: ton

Operating Radius in Meters	64.01m (210') Boom												Operating Radius in Meters
	33.53m (110') Jib	36.58m (120') Jib	39.62m (130') Jib	42.67m (140') Jib	45.72m (150') Jib	48.77m (160') Jib	51.82m (170') Jib	54.86m (180') Jib	57.91m (190') Jib	60.96m (200') Jib	64.01m (210') Jib	67.06m (220') Jib	
20	66.0												20
22	62.5	61.9	61.3										22
24	57.7	57.2	57.0	54.9	49.5								24
26	53.4	53.1	52.9	52.9	48.8	44.5	40.8						26
28	49.6	49.4	49.3	49.3	47.1	43.0	39.4	36.3					28
30	46.2	46.1	46.0	46.1	45.4	41.5	38.0	35.0	31.4	28.8			30
34	40.4	40.5	40.4	40.5	40.3	38.6	35.2	32.4	29.1	26.6	24.1	21.8	34
38	35.4	35.7	35.8	35.9	35.7	35.6	32.7	30.0	26.9	24.5	22.1	19.9	38
42		31.4	31.4	31.6	31.4	31.8	30.3	27.8	24.8	22.5	20.3	18.1	42
46				27.1	26.9	27.5	26.9	25.8	22.9	20.7	18.5	16.5	46
50					23.3	23.6	23.0	22.8	21.2	19.0	16.9	14.9	50
54							19.3	19.2	19.1	18.7	17.5	15.4	54
58								15.6	15.2	14.9	14.1	12.2	58
62									12.3	11.9	11.4	10.8	62
66											8.9	8.3	66
70												6.2	70

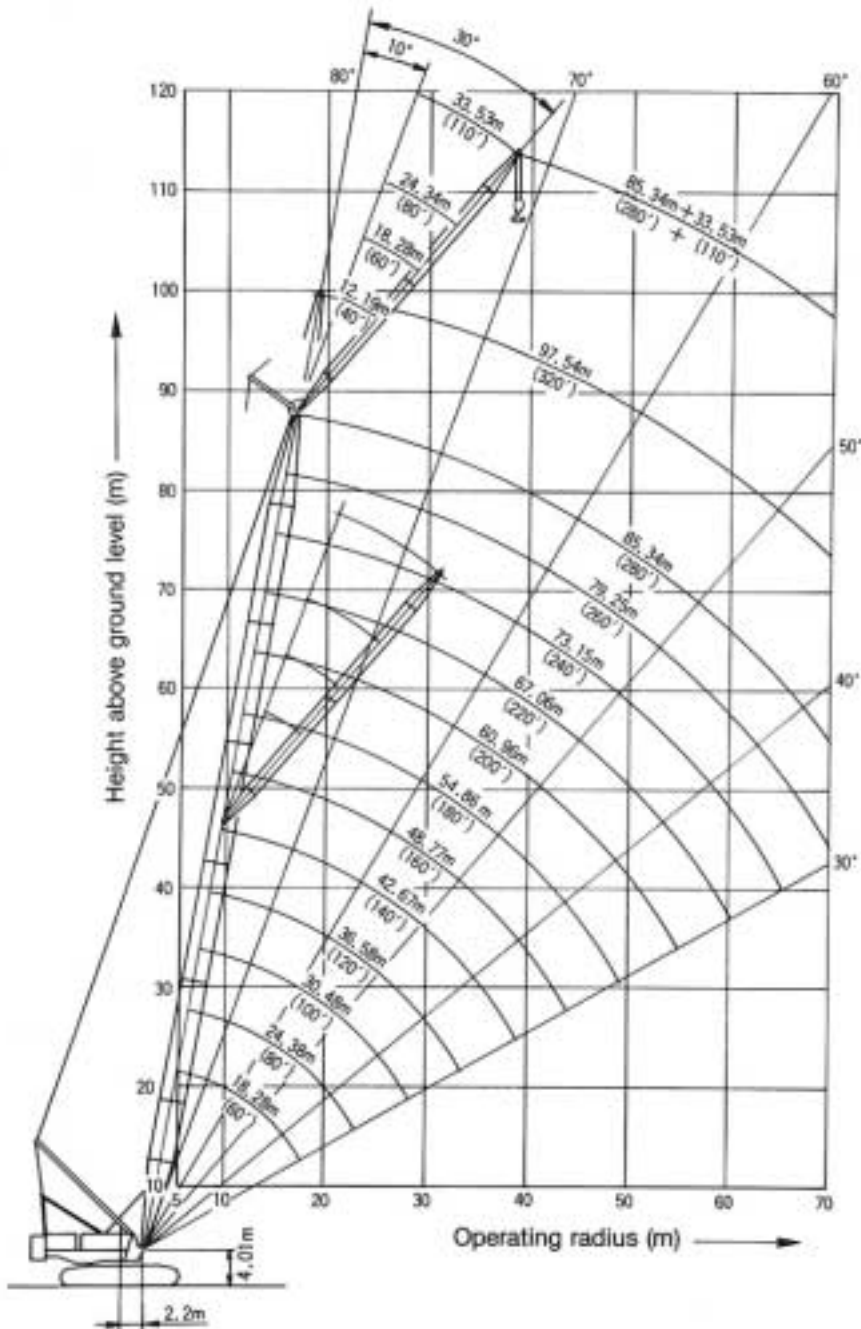
Unit: ton

Operating Radius in Meters	70.10m (230') Boom												Operating Radius in Meters
	33.53m (110') Jib	36.58m (120') Jib	39.62m (130') Jib	42.67m (140') Jib	45.72m (150') Jib	48.77m (160') Jib	51.82m (170') Jib	54.86m (180') Jib	57.91m (190') Jib	60.96m (200') Jib	64.01m (210') Jib	67.06m (220') Jib	
22	48.8	48.7											22
24	45.1	45.0	44.7	44.6									24
26	41.8	41.7	41.5	41.5	41.1	40.9							26
28	38.9	38.8	38.6	38.6	38.4	38.2	37.8	36.5					28
30	36.2	36.2	36.0	36.0	35.8	35.6	35.4	35.2	31.6	29.0			30
34	31.7	31.7	31.6	31.6	31.4	31.3	31.0	30.9	29.3	26.7	24.2	21.9	34
38	27.9	28.0	27.9	27.9	27.8	27.6	27.4	27.4	26.8	24.7	22.3	20.0	38
42		24.7	24.7	24.8	24.7	24.6	24.4	24.4	24.0	22.7	20.4	18.3	42
46				22.2	22.1	22.0	21.8	21.8	21.5	20.9	18.7	16.6	46
50					19.7	19.7	19.6	19.6	19.4	19.2	17.0	15.0	50
54							17.7	17.6	17.6	17.1	16.6	15.5	54
58								15.0	14.5	14.0	13.3	12.3	58
62									12.2	11.7	11.0	10.3	62
66										9.5	8.9	8.3	66
70												6.1	70

Operation of this equipment in excess of the rated loads or disregard of operating instructions voids the warranty.

# Fixed Jib

## Working ranges



## Lifting capacity

### Jib rated loads in metric ton—360° work areas

Unit: ton

Operating Radius in Meters	42.67m (140') Boom																Operating Radius in Meters	
	12.19m (40') Jib		15.24m (50') Jib		18.29m (60') Jib		21.34m (70') Jib		24.38m (80') Jib		27.43m (90') Jib		30.48m (100') Jib		33.53m (110') Jib			
	Offset Angle	Offset Angle	Offset Angle	Offset Angle	Offset Angle	Offset Angle	Offset Angle	Offset Angle	Offset Angle	Offset Angle	Offset Angle	Offset Angle	Offset Angle	Offset Angle	Offset Angle			
16	40.0		35.1		29.7													16
18	40.0	35.0	34.4		28.9		25.1											18
20	39.9	33.3	33.7	29.2	26.3		24.6		21.5		18.8							20
22	39.2	31.7	33.0	28.1	27.7	24.3	24.1		21.1		18.4		15.5		13.7			22
24	38.6	30.4	32.4	26.8	27.2	23.1	23.6	20.4	20.7		18.1		15.3		13.4			24
26	38.0	29.1	31.8	25.6	26.7	22.1	23.2	19.5	20.3	17.6	17.7		15.0		13.2			26
30	37.0	27.0	30.9	23.7	25.8	20.4	22.4	17.9	19.6	16.1	17.1	14.7	14.5	13.0	12.7			30
34	33.3	25.3	28.1	22.1	25.1	18.9	21.7	16.6	18.9	14.9	16.5	14.4	14.0	12.7	12.3	10.9		34
38	30.0	23.9	25.3	20.7	23.2	17.7	20.3	15.5	18.1	13.8	16.0	13.6	13.6	12.4	11.9	10.6		38
42	27.4	22.9	23.1	19.7	21.0	16.8	18.4	14.6	16.3	13.0	14.6	12.7	13.2	11.6	11.6	10.3		42
50	23.0	21.6	19.8	18.2	17.8	15.3	15.5	13.3	13.7	11.7	12.2	11.3	12.0	10.2	10.8	9.2		50
58						14.8	13.4	12.5	11.8	10.9	10.4	10.3	10.1	9.2	9.1	8.3		58
66												9.8	8.8	8.6	7.9	7.6		66

Operation of this equipment in excess of the rated loads or disregard of operating instructions voids the warranty.



# Fixed Jib

## Jib rated loads in metric ton—360° work areas

Unit: ton

Operating Radius in Meters	73.15m (240') Boom																Operating Radius in Meters
	12.19m (40') Jib		15.24m (50') Jib		18.29m (60') Jib		21.34m (70') Jib		24.38m (80') Jib		27.43m (90') Jib		30.48m (100') Jib		33.53m (110') Jib		
	Offset Angle		Offset Angle		Offset Angle		Offset Angle		Offset Angle		Offset Angle		Offset Angle		Offset Angle		
	10°	30°	10°	30°	10°	30°	10°	30°	10°	30°	10°	30°	10°	30°	10°	30°	
20	40.0																20
22	40.0		34.7		29.1												22
24	40.0	34.3	34.2		28.7		24.9		21.5								24
26	40.0	33.2	33.8	28.9	28.3		24.5		21.2		18.5		15.5				26
30	39.3	31.2	32.9	27.2	27.5	23.1	23.8	20.0	20.6		17.9		15.1		13.2		30
34	38.3	29.5	32.1	25.7	26.8	21.7	23.1	18.8	20.1	16.6	17.5	14.7	14.7		12.9		34
38	31.8	28.1	31.4	24.3	26.2	20.6	22.6	17.8	19.6	15.7	17.0	14.4	14.4	12.6	12.6	10.9	38
42	26.6	26.8	27.2	23.1	25.6	19.5	22.1	16.9	19.1	14.9	16.6	14.2	14.0	12.4	12.3	10.6	42
50	18.2	19.6	19.0	21.0	20.3	17.9	20.7	15.4	18.3	13.5	15.9	13.2	13.4	11.9	11.7	10.2	50
58	11.9	12.9	12.6	14.5	13.6	15.5	14.4	14.2	15.0	12.4	14.2	12.1	12.9	10.8	11.2	9.7	58
66	7.1	7.8	7.8	9.2	8.9	10.1	9.4	10.9	10.0	11.6	10.5	11.2	11.8	10.0	10.6	8.9	66
74						6.0	5.6	6.7	6.2	7.5	6.7	8.8	7.7	9.3	8.1	8.3	74
82												5.1		5.9	4.9	6.5	82

Unit: ton

Operating Radius in Meters	79.25m (260') Boom																Operating Radius in Meters
	12.19m (40') Jib		15.24m (50') Jib		18.29m (60') Jib		21.34m (70') Jib		24.38m (80') Jib		27.43m (90') Jib		30.48m (100') Jib		33.53m (110') Jib		
	Offset Angle		Offset Angle		Offset Angle		Offset Angle		Offset Angle		Offset Angle		Offset Angle		Offset Angle		
	10°	30°	10°	30°	10°	30°	10°	30°	10°	30°	10°	30°	10°	30°	10°	30°	
22	40.0		34.9														22
24	40.0	34.8	34.5		28.9		25.1										24
26	40.0	33.8	34.0	29.0	28.5		24.7		21.4		18.5						26
30	39.6	31.8	33.2	27.7	27.8	23.4	23.9	20.3	20.8		18.1		15.2		13.3		30
34	37.5	30.2	32.4	26.2	27.1	22.1	23.3	19.1	20.3	16.9	17.6	14.7	14.8		12.9		34
38	31.0	28.7	31.6	24.9	26.5	21.0	22.8	18.1	19.8	16.0	17.2	14.5	14.5	12.6	12.6	10.9	38
42	25.7	27.2	26.4	23.7	25.9	20.0	22.3	17.2	19.3	15.1	16.8	14.3	14.2	12.4	12.4	10.6	42
50	16.7	18.3	17.5	20.1	18.9	18.3	19.5	15.7	18.5	13.8	16.0	13.5	13.6	12.1	11.8	10.2	50
58	10.4	11.6	11.1	13.2	12.4	14.2	12.9	14.5	13.5	12.7	14.0	12.4	13.0	11.1	11.4	9.8	58
66		6.6	6.4	8.0	7.5	8.9	8.0	9.7	8.6	10.6	9.1	11.5	10.4	10.2	10.8	9.1	66
74								5.5		6.4		7.6	6.4	8.4	6.8	8.5	74
82																5.4	82

Unit: ton

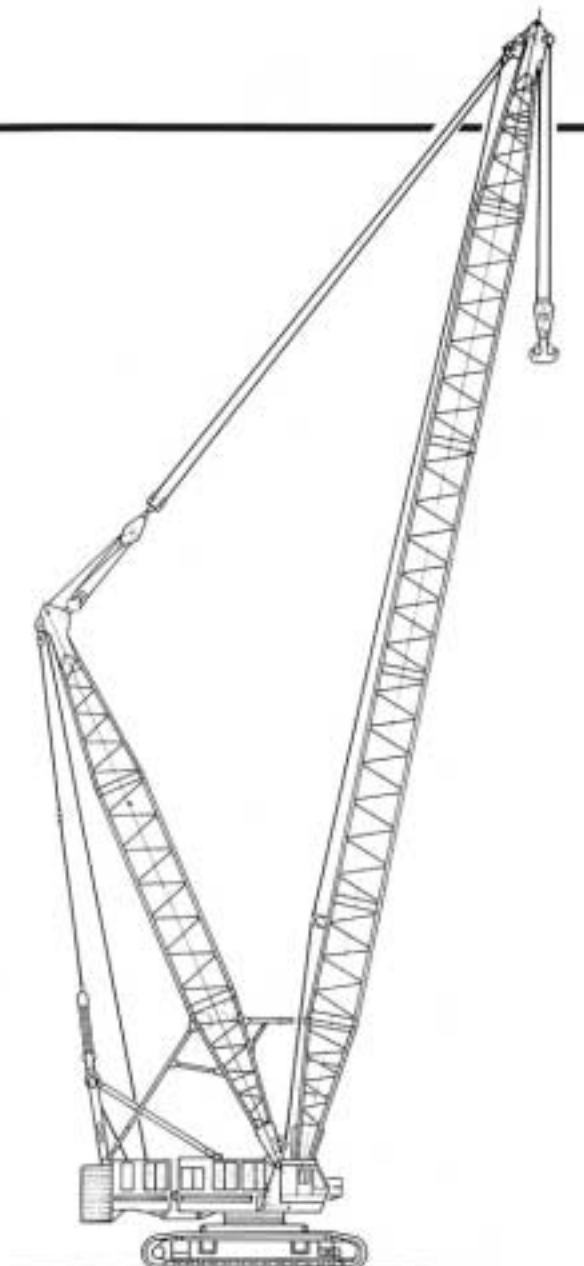
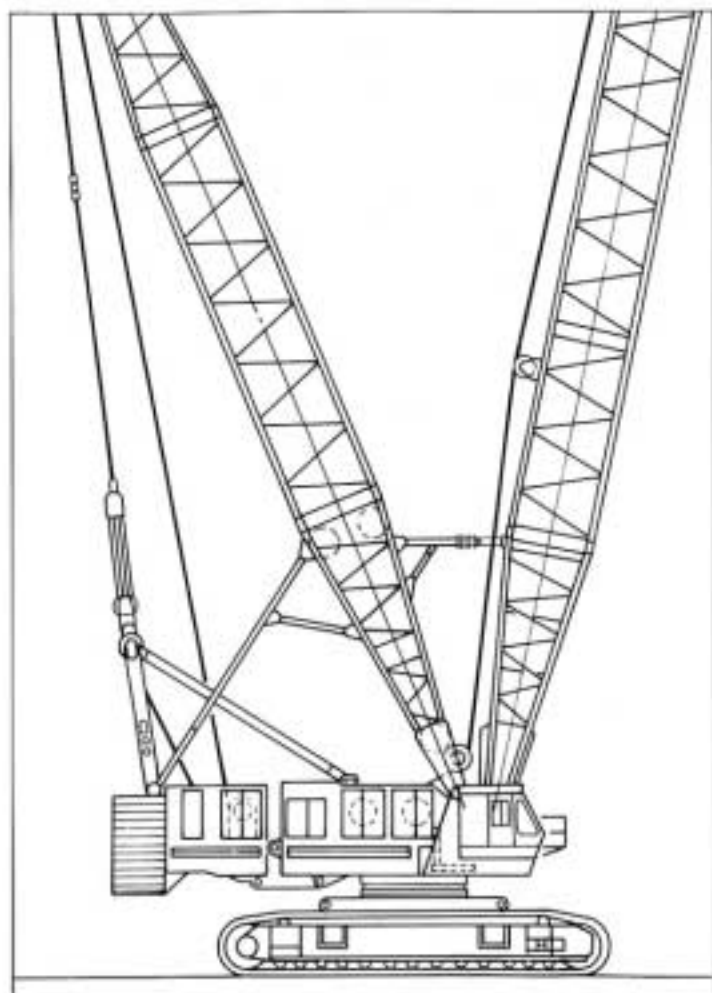
Operating Radius in Meters	85.34m (280') Boom																Operating Radius in Meters
	12.19m (40') Jib		15.24m (50') Jib		18.29m (60') Jib		21.34m (70') Jib		24.38m (80') Jib		27.43m (90') Jib		30.48m (100') Jib		33.53m (110') Jib		
	Offset Angle		Offset Angle		Offset Angle		Offset Angle		Offset Angle		Offset Angle		Offset Angle		Offset Angle		
	10°	30°	10°	30°	10°	30°	10°	30°	10°	30°	10°	30°	10°	30°	10°	30°	
22	36.6																22
24	35.4		31.7		29.1												24
26	34.4	31.5	30.8		28.7		24.8		21.5								26
30	32.4	30.3	29.0	28.0	27.0	23.8	24.1		20.9		18.1		15.3		13.3		30
34	30.7	29.1	27.4	26.7	25.4	22.5	23.5	19.4	20.4	17.1	17.7		14.9		13.0		34
38	29.1	28.1	26.0	25.4	24.0	21.4	22.4	18.4	19.9	16.2	17.3	14.5	14.6	12.7	12.7		38
42	23.9	26.7	24.6	24.2	22.7	20.4	21.1	17.5	19.5	15.4	16.9	14.3	14.3	12.5	12.4	10.7	42
50	15.0	17.4	16.5	18.6	17.3	18.7	17.9	16.1	17.7	14.0	16.2	13.8	13.7	12.1	11.9	10.3	50
58	8.8	10.6	10.1	11.7	10.8	12.7	11.3	13.7	12.0	13.0	12.5	12.7	13.2	11.3	11.5	9.9	58
66			5.3	6.6	5.9	7.5	6.5	8.3	7.1	9.2	7.6	10.8	8.8	10.5	9.3	9.3	66
74												6.3		7.1		7.8	74
82																	82

Operation of this equipment in excess of the rated loads or disregard of operating instructions voids the warranty.



# Heavy Lifts

## Rig configuration



## Lifting capacity

### Rated loads in metric ton—boom in 360° work areas

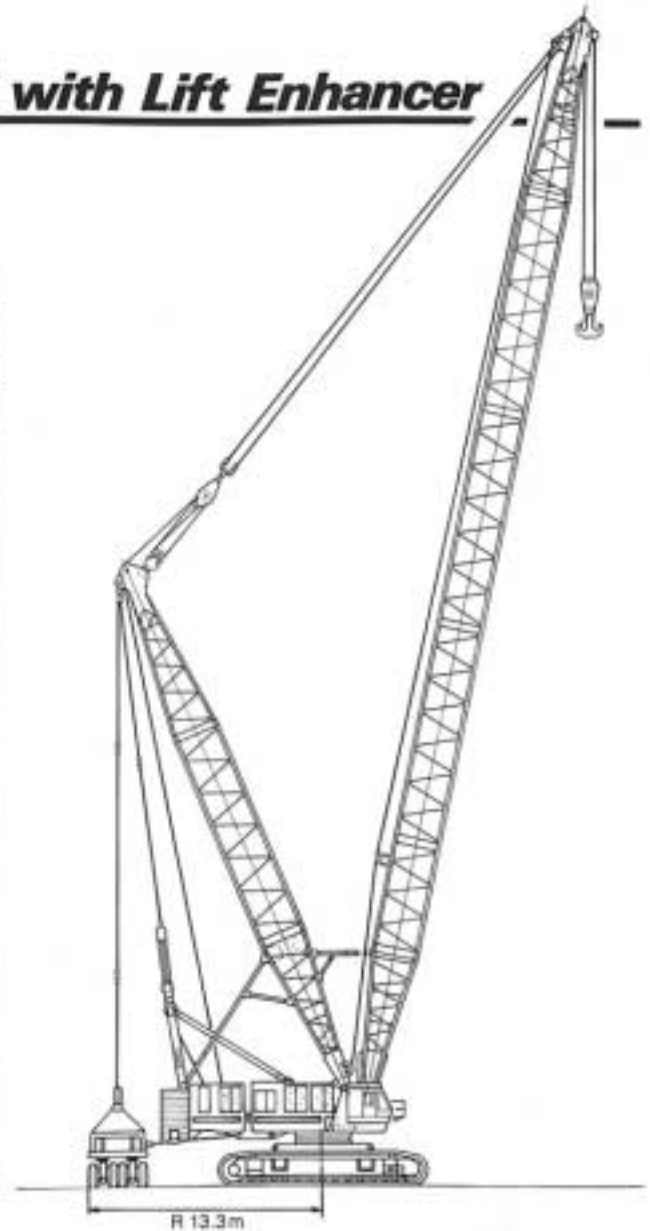
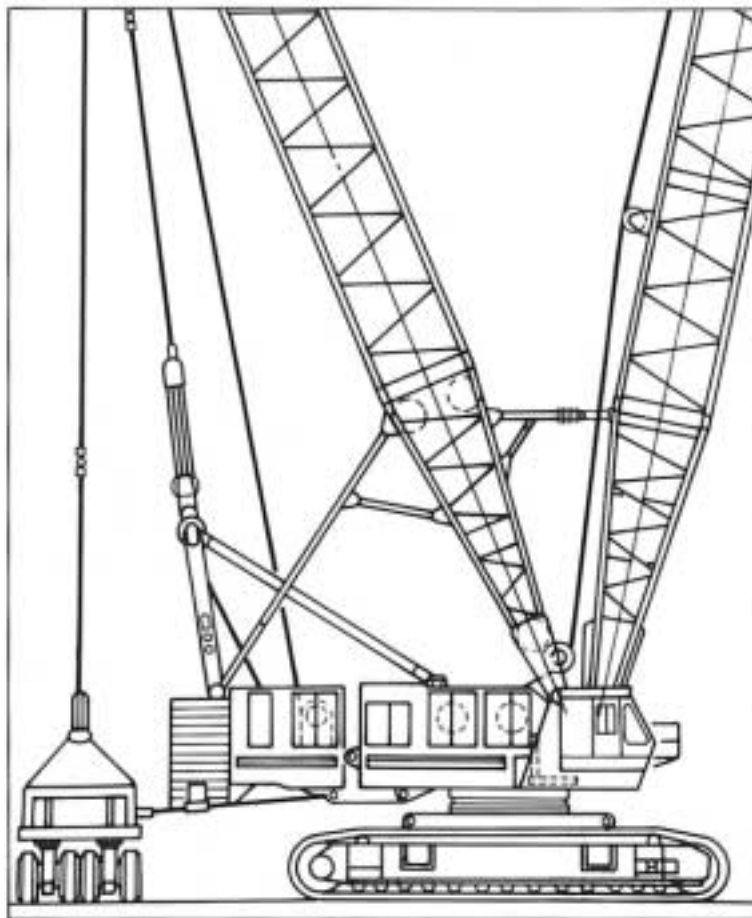
Unit: ton

Operating Radius in Meters	30.48m Mast				36.58m Mast		42.67m Mast		48.77m Mast		Operating Radius in Meters
	42.67m (140') Boom	48.77m (160') Boom	54.86m (180') Boom	60.96m (200') Boom	67.06m (220') Boom	73.15m (240') Boom	79.25m (260') Boom	85.34m (280') Boom	91.44m (300') Boom	97.54m (320') Boom	
12	221.5	220.5	12.2m/13.9	13.2m/16.4							12
14	175.0	173.9		173.1	172.3	14.3m/168.0	15.3m/146.2				14
16	144.0	142.9		142.0	141.2	141.2	141.2	16.4m/134.6			16
18	121.8	120.7		119.9	119.0	119.0	119.0	119.0	118.4	18.5m/109.1	18
20	105.2	104.1		103.2	102.3	102.3	102.1	102.1	101.4	101.4	97.0
22	92.4	91.2		90.3	89.4	89.4	89.1	88.9	88.2	88.2	87.9
24	82.1	80.9		80.0	79.1	79.1	78.6	78.4	77.7	77.7	77.2
26	73.7	72.5		71.6	70.6	70.6	70.0	69.8	69.1	69.1	68.5
28	66.7	65.5		64.5	63.6	63.6	62.9	62.6	61.9	61.9	61.2
30	60.8	59.6		58.6	57.6	57.6	56.9	56.5	55.8	55.8	55.1
34	51.5	50.2		49.2	48.2	48.0	47.3	46.8	46.1	46.0	45.3
38	44.4	43.1		42.0	41.0	40.7	40.0	39.5	38.7	38.5	37.8
42		37.6		36.4	35.3	35.0	34.2	33.6	32.8	32.6	31.9
46				32.0	30.8	30.4	29.6	29.0	28.1	27.9	27.1
50					27.1	26.6	25.8	25.1	24.3	24.0	23.2
54					24.1	23.5	22.6	21.9	21.0	20.7	19.9
58						20.9	20.0	19.2	18.3	17.8	16.7
62							17.7	16.9	15.7	15.1	13.9
66								14.7	13.4	12.7	11.5
70								12.6	11.4	10.7	9.5
74									9.7	8.9	7.7
78										7.4	6.1

Operation of this equipment in excess of the rated loads or disregard of operating instructions voids the warranty.

# Super Heavy Lifts with Lift Enhancer

## Rig configuration



## Lifting capacity

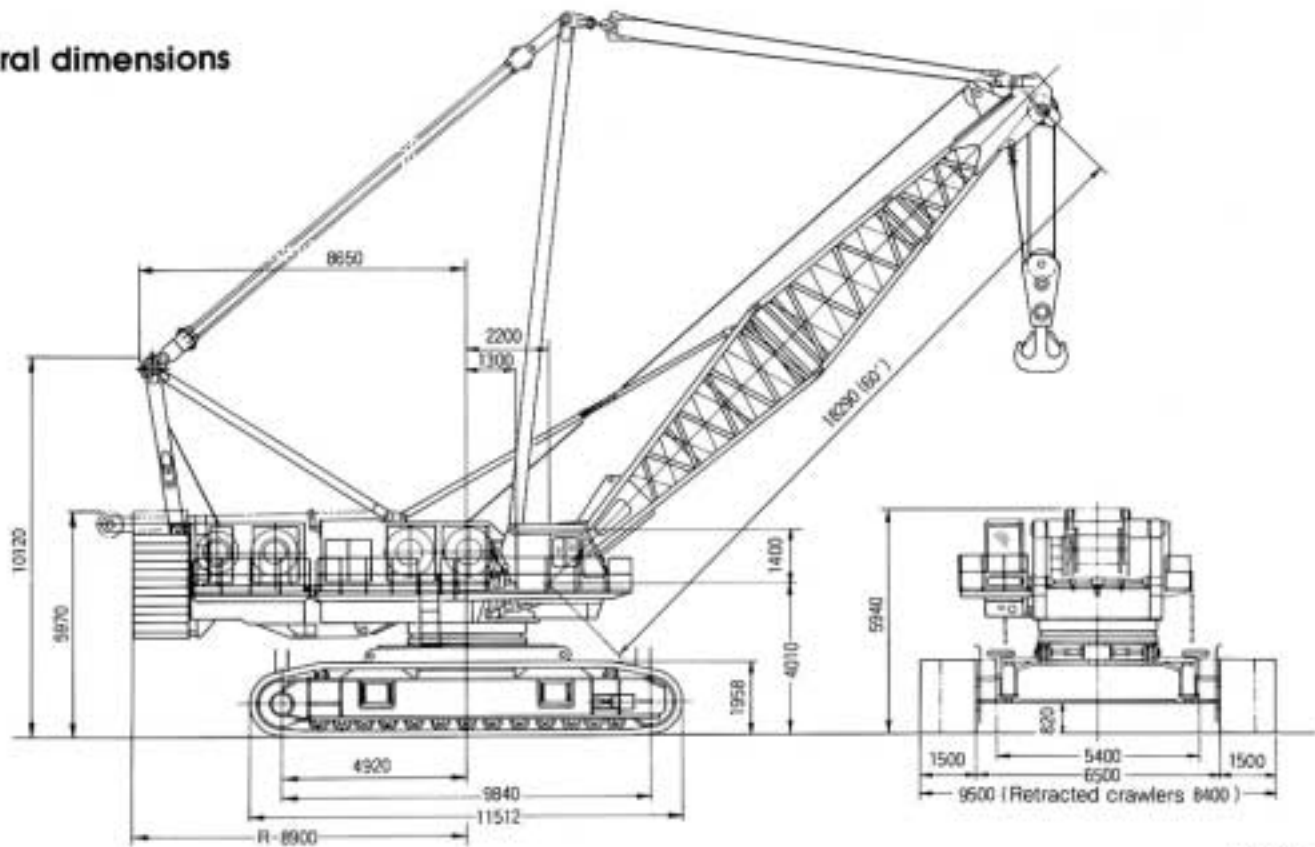
### Rated loads in metric ton — boom in 360° work areas

Unit: ton

Operating Radius in Meters	30.48m Mast		36.58m Mast		42.67m Mast		48.77m Mast		54.86m Mast		60.96m Mast		Operating Radius in Meters					
	36.58 (120') Boom	42.67m (140') Boom	48.77m (160') Boom	54.86m (180') Boom	60.96m (200') Boom	67.06m (220') Boom	73.15m (240') Boom	79.25m (260') Boom	85.34m (280') Boom	91.44m (300') Boom	97.54m (320') Boom	103.6m (340') Boom		109.7m (360') Boom	115.8m (380') Boom	121.9m (400') Boom		
10	330.0														10			
12	306.2	292.7	249.4	220.159	184.4										12			
14	282.4	281.6	247.6	214.7	186.0	143.183	134.142								14			
16	247.0	246.2	244.8	213.2	184.9	168.4	146.2	114.134							16			
18	214.5	210.9	212.7	211.6	183.7	168.0	146.2	134.6	119.0	105.110					18			
20	186.3	185.7	184.5	184.2	182.4	167.6	146.2	134.6	119.0	111.0	98.8	89.008			20			
22	164.4	163.8	162.6	162.3	161.6	161.6	146.2	134.6	119.0	111.0	98.8	93.0	82.3	72.163	22			
24	147.0	146.3	145.1	144.7	144.0	144.0	143.5	134.6	119.0	111.0	98.8	93.0	82.3	76.0	66.0	24		
26	132.7	132.0	130.8	130.4	129.6	129.6	129.1	128.8	118.9	109.8	98.8	93.0	82.3	76.0	66.0	26		
28	119.7	120.1	118.8	118.5	117.7	117.7	117.0	116.7	116.0	109.6	96.7	93.0	82.3	76.0	66.0	28		
30	106.8	110.0	108.8	108.4	107.6	107.5	106.8	106.5	105.7	105.8	96.3	89.5	82.3	76.0	66.0	30		
34	84.0	94.0	92.7	92.3	91.5	91.3	90.6	90.1	89.3	89.3	88.6	88.0	77.8	72.4	66.0	34		
38		80.0	80.0	80.0	79.2	78.9	78.1	77.6	76.8	76.8	76.0	75.6	74.5	71.1	62.0	38		
42			71.0	70.5	69.5	69.1	68.4	67.8	67.0	66.9	66.1	65.6	65.5	64.7	60.4	42		
46				62.8	61.7	61.3	60.5	59.9	59.0	58.9	58.1	57.5	57.4	56.5	55.9	46		
50					55.4	54.8	54.0	53.3	52.5	52.3	51.5	50.9	50.8	49.8	49.2	50		
54						50.1	49.5	48.6	47.9	47.0	46.7	45.9	45.2	44.2	43.6	54		
58							45.0	44.0	43.3	42.4	42.0	41.2	40.6	40.4	39.4	38.8	58	
62								40.1	39.3	38.4	38.0	37.2	36.5	36.3	35.3	34.7	62	
66									35.9	35.0	34.5	33.7	33.0	32.8	31.8	31.1	66	
70										33.0	32.0	31.5	30.6	29.9	29.7	28.6	27.9	70
74											29.4	28.8	27.9	27.2	27.0	25.9	25.2	74
78												26.5	25.5	24.8	24.5	23.4	22.6	78
82													23.4	22.6	22.4	21.1	20.1	82
86														21.5	20.7	20.4	18.8	86
90															18.9	18.4	16.8	90

Operation of this equipment in excess of the rated loads or disregard of operating instructions voids the warranty.

## General dimensions



unit: mm

## Specifications

	Crane use		Tower crane use (Luffing jib)
<b>Performance</b>			
Max. lifting capacity	ton x m	18.29m heavy duty boom 450 x 5.8	99 x 16 (33.53m boom + 24.38m jib)
		18.29m light duty boom 230 x 11.1	
Base boom length	m	18.29 (heavy duty boom) 18.29 (light duty boom)	33.53 (luffing boom)
Max. main boom length	m	42.67 (heavy duty boom) 97.54 (light duty boom)	70.10
Max. jib length	m	33.53 (light duty boom use)	67.06
Max. boom length with jib	m	85.34 + 33.53	70.10 + 67.06
Main hook line speed (High/Low)	m/min		59/100
Aux. hook line speed (High/Low)	m/min		59/100
Boom hoist line speed	m/min		25
Boom lowering line speed	m/min		25
Jib hoist line speed	m/min		35
Jib lowering line speed	m/min		35
Swing speed	rpm		1.0
Travel speed (High/Low)	km/h		0.6/1.2
Gradability (unloaded)	%		30 (16.7°)
Operating weight	ton	335 (18.29m heavy duty boom)	420 (70.10m boom + 67.06m jib)
Ground pressure (unloaded)	kg/cm <sup>2</sup>	1.07 (18.29m heavy duty boom)	1.3 (70.10m boom + 67.06m jib)
<b>Wire rope</b>			
Main hoist wire rope dia.	mm		32
Aux. hoist wire rope dia.	mm		32
Wire rope dia for boom hoist use (2 x 12 lines)	mm		28
Boom guy line	mm		44
Wire rope dia for jib hoist use (2 x 8 lines)	mm		28
Jib guy line (4-line type)	mm		36 (Jib side) 36 (Main boom side)
<b>Drive device</b>			
Engine	Model	CUMMINS KTA-1150-C600	
	Type	4-stroke, water-cooled, direct injection, diesel engine	
	Power output	609/2,100	
Fuel tank capacity	t	front 390	rear 550

Notes: 1. Line speed figures are for one drum.

2. The main hoist, auxiliary hoist, boom hoist and jib hoist travel speeds vary according to the load being lifted.

**KOBELCO**

# 7450

**NOTE:** Due to our policy of continual product improvement, all designs and specifications are subject to change without advance notice. Data herein is informational in nature and shall not be construed to warrant suitability of the machine for any particular purpose as performance may vary with the conditions encountered. These statements are correct at time of going to press.

---

**KOBELCO CONSTRUCTION MACHINERY CO., LTD.**

3-13, Nihonbashi 1-chome, Chuo-ku, Tokyo, 103-8246 JAPAN  
Tel:(03)3278-7080 / Fax:(03)3278-7138