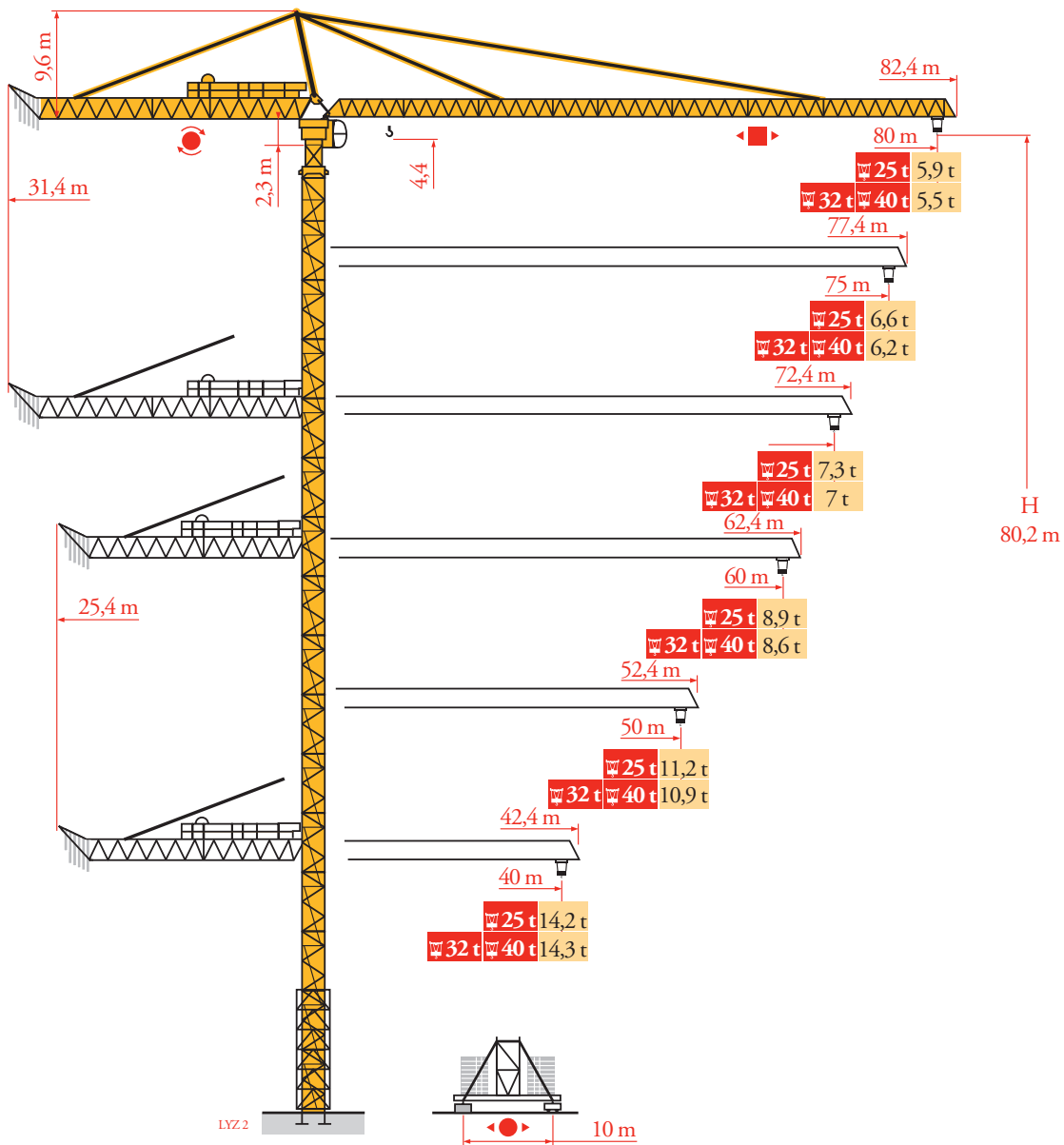
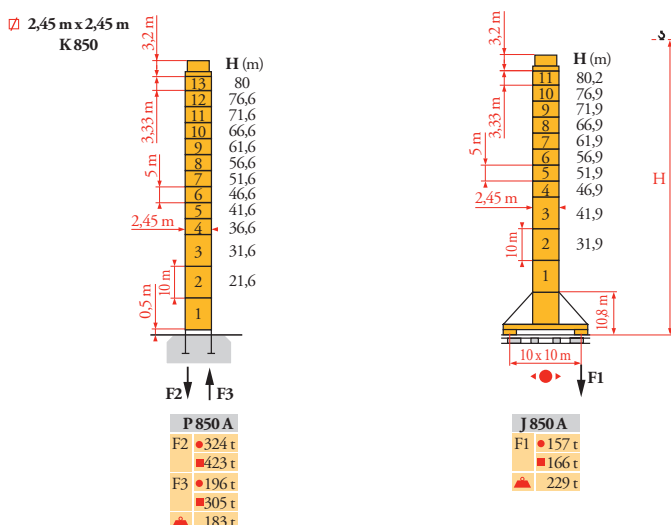


# Potain MD 650



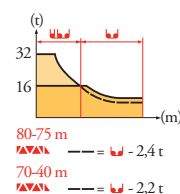
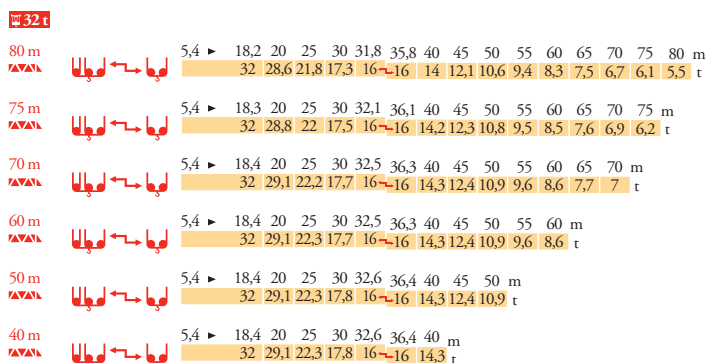
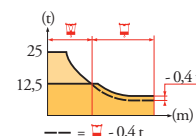
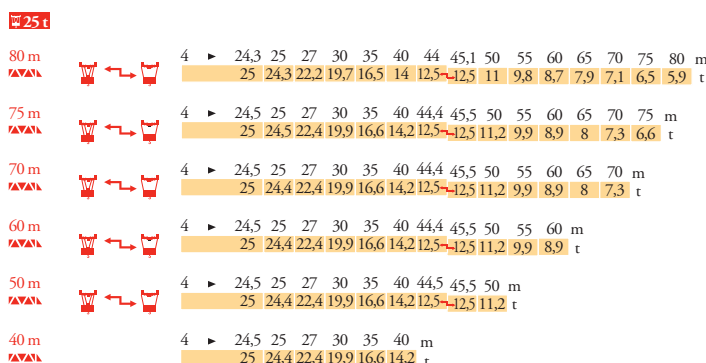
Mat / Réactions  
 Maste / Eckdrücke  
 Masts / Reactions  
 Mástil / Reacciones  
 Torre / Reazioni  
 Tramo / Reacções  
 Композиции башни /  
 Реакции

LV23



Courbes de charges  
 Lastkurven  
 Load diagrams  
 Curvas de cargas  
 Curve di carico  
 Curva de cargas  
 Диаграммы  
 грузоподъемностей

LV23



FR

● Réactions en service  
 ■ Réactions hors service  
 A vide sans lest (ni train de transport) avec flèche et hauteur maximum

DE

Reaktionskräfte in Betrieb  
 Reaktionskräfte außer Betrieb  
 Ohne Last, Ballast (und Transportachse), mit Maximalausleger und Maximalhöhe

EN

Reactions in service  
 Reactions out of service  
 Without load, ballast (or transport axles), with maximum jib and maximum height

ES

Reacciones en servicio  
 Reacciones fuera de servicio  
 Sin carga, sin lastre, (ni tren de transporte), flecha y altura máxima

IT

Reazioni in servizio  
 Reazioni fuori servizio  
 A vuoto, senza zavorra (ne assali di trasporto) con braccio massimo e altezza massima

PT

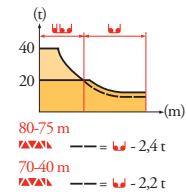
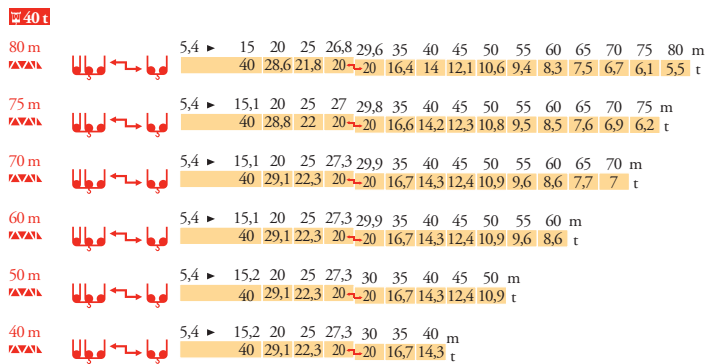
Reacções em serviço  
 Reacções fora de serviço  
 Sem carga (nem trem de transporte)- sem lastro com lança e altura máximas

RU

Реакции при работе  
 Реакции в покое  
 Вес без груза, балласта (или транспортных осей), с максимальной длиной стрелы и максимальной высотой

Courbes de charges  
 Lastkurven  
 Load diagrams  
 Curvas de cargas  
 Curve di carico  
 Curva de cargas  
 Диаграммы  
 грузоподъемностей

LYZ<sub>3</sub>



Lest de contre-flèche  
 Gegenauslegerballast  
 Counter-jib ballast  
 Lastre de contra flecha  
 Contrappeso  
 Lastros da contra lança  
 Балласт на консоли

LYZ<sub>3</sub>

	5 900 kg - 4 200 kg - 2 800 kg		
	150 LCC	250 LCC	200 LBR
	(kg)	(kg)	(kg)
80 m	31,4 m	33 700	33 700
75 m	31,4 m	32 300	32 300
70 m	31,4 m	27 800	27 800
60 m	25,4 m	33 700	33 700
50 m	25,4 m	27 800	27 800
40 m	25,4 m	21 900	21 900

Lest de base - Grundballast  
 Base ballast - Lastre de base  
 Zavorra di base - Lastros da base  
 Базовый балласт

LYZ<sub>3</sub>

2,45 m	J 850 A	H (m)	80,2	76,9	71,9	66,9	61,9	56,9	51,9	46,9	41,9	36,9	31,9
			(t)	60	60	60	60	60	60	60	60	60	60
			60	60	60	60	60	60	60	60	60	60	60

**FR**  
 Nous consulter

**DE**  
 Auf Anfrage

**EN**  
 Consult us

**ES**  
 Consultarnos

**IT**  
 Consultateci

**PT**  
 Consultar-nos

**RU**  
 Проконсультируйтесь у нас

Mécanismes  
Antriebe  
Mechanisms  
Meccanismi  
Mecanismos  
Механизмы

LYZ 6

												ch-PS hp	kW				
	150 LCC 63		m/min	46	56	70	92	110	23	28	35	46	55	150	110	461 m	
		t	12,5	9,4	6,25	3,1	1,6	25	18,8	12,5	6,2	3,2					
	250 LCC 80		m/min	52	68	86	108	122	26	34	43	54	61				250
	t	16	12	8	4	2	32	24	16	8	4	4					
	250 LCC 100		m/min	46	60	76	96	108	23	30	38	48	54	250	180	488 m	
		t	20	15	10	5	2,5	40	30	20	10	5					
	15 DVF 16		m/min	0 → 47 (25 t) - 0 → 63 (12,5 t) - 0 → 76 (6,25 t) - 0 → 100 (3,13 t)											15	11	
			m/min	0 → 33 (32 t) - 0 → 50 (16 t) - 0 → 67 (8 t) - 0 → 100 (2 t)													
			m/min	0 → 33 (40 t) - 0 → 50 (20 t) - 0 → 67 (10 t) - 0 → 100 (2,5 t)													
	200 LBR 100		m/min	3,6/36	5,6/56	9/90	14,4/144	1,8/18	2,8/28	4,5/45	7,2/72	200	150	650 m			
		t	20	12,3	7,2	4	40	24,4	14,3	8							
	15 DVF 16		m/min	0 → 50 (20 t)				0 → 33 (40 t)				15	11				
			0 → 67 (7,5 t)				0 → 67 (8,2 t)										
			0 → 100 (2,5 t)				0 → 100 (2,5 t)										
	RVF 192 Optima +		tr/min U/min rpm	0 → 0,6								2 x 15	2 x 11				
	J 850 A		m/min														
CEI 38				IEC 38													
400 V (+6% -10%) 50 Hz								150 LCC : 190 kVA 250 LCC : 350 kVA 200 LBR : 240 kVA									

	<b>FR</b>	Levage		<b>DE</b>	Heben		<b>EN</b>	Hoisting		<b>ES</b>	Elevación		<b>IT</b>	Sollevamento		<b>PT</b>	Elevação		<b>RU</b>	Подъем
		Distribution			Katzfahren			Trolleying			Distribución			Diribuzione			Distribuição			Перемещение каретки
		Orientation			Schwenken			Slewing			Orientación			Rotazione			Rotação			Поворот
		Translation			Kranfahren			Travelling			Traslación			Traslazione			Translação			Перемещение крана



Document commercial non contractuel. Pour toute information technique se référer à la notice correspondante.

Unverbindliches Vertriebsdokument. Für technische Informationen, siehe die entsprechenden Anweisungen.

This commercial document is not legally binding. For any technical information, please refer to the corresponding instructions.

Documento commercial no contractual. Para cualquier información técnica, ver la noticia correspondiente.

Documento commerciale non vincolante, per tutte le informazioni tecniche fare riferimento al catalogo istruzioni.

Documento comercial não contratual. Para qualquer informação técnica complementar consultar as respectivas instruções.

Этот коммерческий документ не является юридически обязательным. Для получения технической информации, см. соответствующие инструкции.



**Manitowoc - Americas - World Headquarters**  
2400 S. 44th Street • Manitowoc • WI 54220 USA  
Tel: +1 920 684 4410 • Fax: +1 920 652 9778

**Manitowoc - Europe, Middle East & Africa**  
Manitowoc France SAS  
18, rue de Charbonnières B.P. 173 • 69132 ECULLY Cedex • FRANCE  
Tel: +33 (0)4 72 18 20 20 • Fax: +33 (0)4 72 18 20 00

**Manitowoc - Asia Pacific**  
16F Xu Hui Yuan Building,  
1089 Zhongshan No.2 Road (S) • Shanghai 200030 China  
Tel: +86 21 6457 0066 • Fax: +86 21 6457 4955

MD 650

REF. 2003 48 LYZ 6