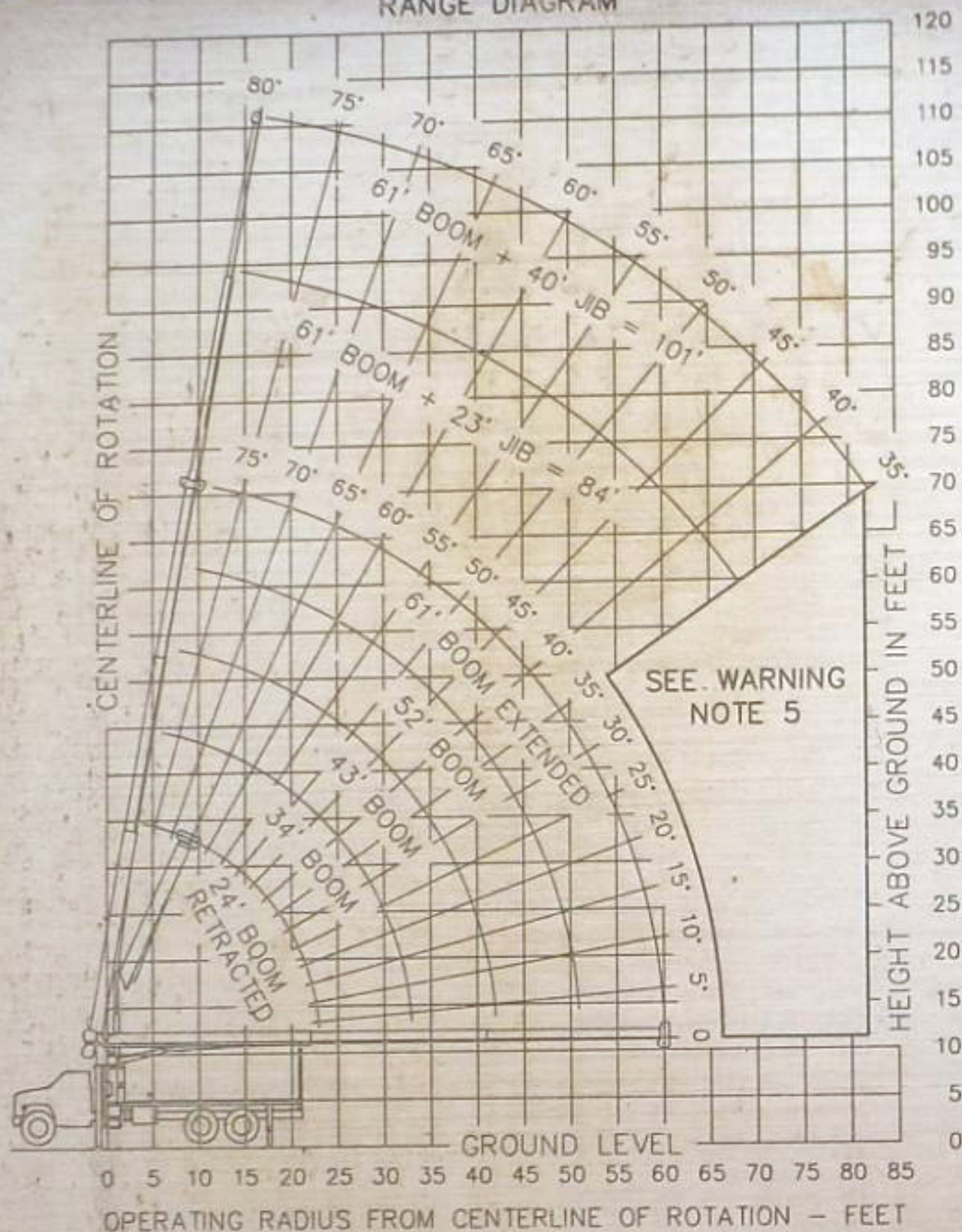


RANGE DIAGRAM



LOAD RATINGS IN LBS WITH OUTRIGGERS AND STABILIZERS EXTENDED

OPERATING RADIUS IN FEET	BOOM LENGTH									
	24 FT	34 FT	43 FT	52 FT	61 FT					
4	79	28000								
6	75	19700								
8	70	15900	77	14600	80	13700				
10	65	13500	73	12200	77	11450	80	10700		
12	59	11700	69	10600	74	9860	78	9330	80	8700
14	54	10300	66	9320	71	8670	76	8160	78	7650
16	47	9100	62	8340	68	7770	73	7280	76	6850
20	31	7230	54	6840	63	6400	69	5980	72	5600
25			42	5520	55	5230	63	4880	67	4550
30			26	4370	46	4320	56	4100	62	3810
35					35	3610	49	3450	57	3260
40					19	2820	41	2960	51	2810
45							31	2490	44	2440
50							14	1830	36	2100
55									27	1740
60									10	1200

450 LBS 320 LBS 250 LBS 210 LBS 180 LBS DEDUCTIONS FOR STOWED JIB

WARNING

1. THE OPERATOR MUST READ AND UNDERSTAND THE OWNER'S MANUAL BEFORE OPERATING THIS CRANE.
2. POSITIONING OR OPERATION OF CRANE BEYOND AREAS SHOWN ON THIS CHART IS NOT INTENDED OR APPROVED EXCEPT WHERE SPECIFIED IN OWNER'S MANUAL.
3. LOADED BOOM ANGLES AT SPECIFIED BOOM LENGTHS GIVE ONLY AN APPROXIMATION OF THE OPERATING RADIUS. THE BOOM ANGLE BEFORE LOADING SHOULD BE GREATER TO ACCOUNT FOR DEFLECTIONS. DO NOT EXCEED THE OPERATING RADIUS FOR RATED LOADS.
4. THE OPERATING RADIUS SHOWN IN THE JIB RATING CHART IS FOR FULLY EXTENDED BOOM ONLY. WHEN BOOM IS NOT FULLY EXTENDED, USE ONLY LOADED BOOM ANGLE TO DETERMINE LOAD RATING OF JIB. DO NOT RELY ON CAPACITY ALERT SYSTEM WHEN LIFTING FROM JIB.
5. BOOM MUST BE FULLY RETRACTED WHEN JIB IS ERECTED, BEFORE LOWERING BELOW A 35° BOOM ANGLE.
6. FOR BOOM ANGLES NOT SHOWN ON JIB LOAD RATING CHART, USE RATING OF NEXT LOWER BOOM ANGLE.
7. FOR BOOM LENGTHS NOT SHOWN, USE RATING OF THE NEXT LONGER BOOM. FOR RADIUS NOT SHOWN, USE RATING OF NEXT LONGER RADIUS.
8. CRANE LOAD RATINGS ON OUTRIGGERS ARE BASED ON FREELY SUSPENDED LOADS WITH THE MACHINE LEVELED AND STANDING ON A FIRM UNIFORM SUPPORTING SURFACE. NO ATTEMPT SHALL BE MADE TO MOVE A LOAD HORIZONTALLY ON THE GROUND IN ANY DIRECTION.
9. PRACTICAL WORKING LOADS DEPEND ON SUPPORTING SURFACE, WIND, AND OTHER FACTORS AFFECTING STABILITY SUCH AS HAZARDOUS SURROUNDINGS, EXPERIENCE OF PERSONNEL, AND PROPER HANDLING, ALL OF WHICH MUST BE TAKEN INTO ACCOUNT BY THE OPERATOR.
10. THE MAXIMUM LOAD WHICH MAY BE TELESCOPED IS LIMITED BY HYDRAULIC PRESSURE, BOOM ANGLE, AND BOOM LUBRICATION. IT IS SAFE TO ATTEMPT TO TELESCOPE ANY LOAD WITHIN THE LIMITS OF THE LOAD RATING CHART.

INFORMATION

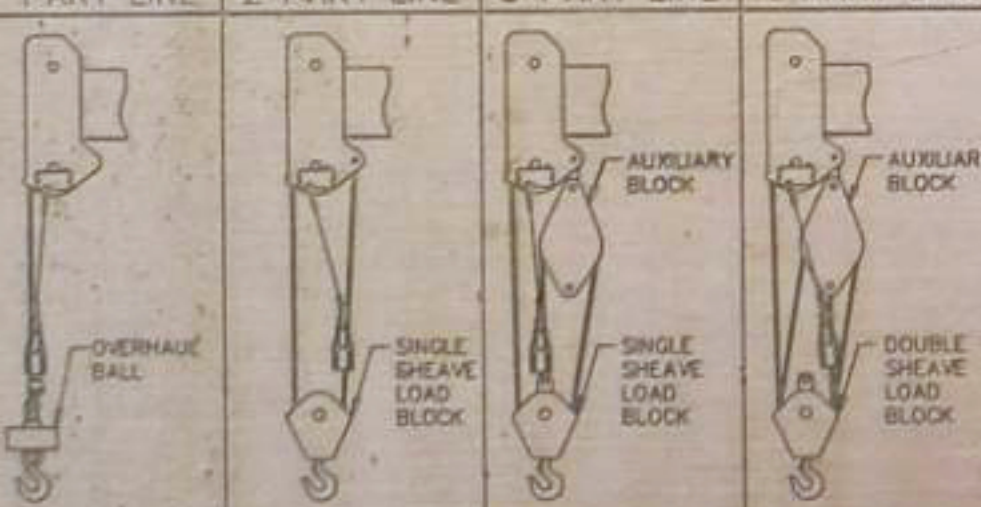
1. DEDUCTIONS MUST BE MADE FROM RATED LOADS FOR STOWED JIB, OPTIONAL ATTACHMENTS, HOOKS, AND LOAD-BLOCKS (SEE DEDUCTION CHART). WEIGHTS OF SLINGS AND ALL OTHER LOAD HANDLING DEVICES SHALL BE CONSIDERED A PART OF THE LOAD.
2. CRANE LOAD RATINGS WITH OUTRIGGERS ARE BASED ON OUTRIGGERS AND STABILIZERS EXTENDED AND SET WITH MACHINE LEVELED.
3. MAIN BOOM LOAD RATINGS ARE BASED ON CONSTANT HOIST CYLINDER PRESSURE AND MACHINE STRUCTURAL COMPETENCE AND DO NOT EXCEED 85% OF TIPPING. JIB LOAD RATINGS ARE BASED ONLY ON MACHINE STRUCTURAL COMPETENCE AND DO NOT EXCEED 85% OF TIPPING.

DEFINITIONS

1. OPERATING RADIUS IS THE HORIZONTAL DISTANCE FROM THE AXIS OF ROTATION TO THE CENTER OF THE VERTICAL HOIST LINE OR TACKLE WITH LOAD APPLIED.
2. LOADED BOOM ANGLE AS SHOWN IN THE COLUMN HEADED BY ∠, IS THE INCLUDED ANGLE BETWEEN THE HORIZONTAL AND LONGITUDINAL AXES OF THE BOOM BASE AFTER LIFTING RATED LOAD AT RATED RADIUS.

ALLOWABLE LINE PULL

PART LINE 2 PART LINE 3 PART LINE 4 PART LINE



7600 LBS	15200 LBS	22800 LBS	28000 LBS
7400 LBS	14800 LBS	22200 LBS	28000 LBS

WARNING

ANTI-TWO BLOCK SYSTEM MUST BE IN GOOD OPERATING CONDITION BEFORE OPERATING CRANE. REFER TO OWNER'S MANUAL.

KEEP AT LEAST 3 WRAPS OF LOAD LINE ON DRUM AT ALL TIMES.

1/2" OR 9/16"-6X25 IWRC (3.5:1 SF)
26600 LBS MIN BREAKING STRENGTH
9/16" ROT RESISTANT (5.0:1 SF)
37000 LBS MIN BREAKING STRENGTH

DEDUCTIONS FROM RATED LOADS FOR MANITEX SUPPLIED LOAD HANDLING DEVICES

AUXILIARY BLOCK	50 LBS
OVERHAUL BALL	100 LBS
SINGLE SHEAVE LOAD BLOCK	260 LBS
DOUBLE SHEAVE LOAD BLOCK	350 LBS
HOSE REEL	190 LBS
SWING AROUND JIB	SEE LOAD CHART

WARNING

LIFTING OFF THE MAIN BOOM POINT WHILE THE SWING AROUND JIB IS ERECTED IS NOT INTENDED OR APPROVED.

Manitex

MODEL 1461

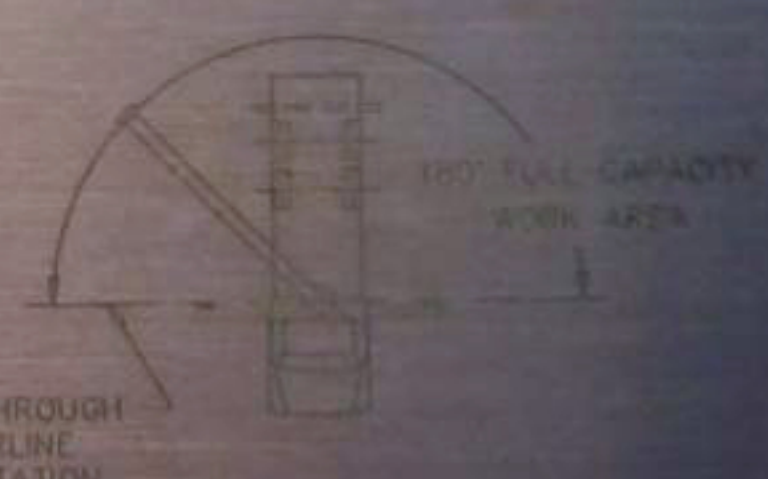
MANITEX INC.

CRANE MEETS ANSI B30.5 REQUIREMENTS

DWG NO. 7300002-002

JIB LOAD RATINGS WITH OUTRIGGERS AND STABILIZERS EXTENDED

OPERATING RADIUS IN FEET	23 FT JIB FOR ALL BOOM LENGTHS SEE WARNING NOTE 4			40 FT JIB FOR ALL BOOM LENGTHS SEE WARNING NOTE 4		
	OPERATING RADIUS IN FEET	RATED LOAD IN POUNDS		OPERATING RADIUS IN FEET	RATED LOAD IN POUNDS	
16	80	3800		20	80	2100
20	77	3300		25	77	1900
25	74	2770		30	74	1650
30	70	2350		35	71	1450
35	67	2030		40	68	1280
40	63	1760		45	65	1140
45	59	1510		50	62	1020
50	55	1290		55	59	920
55	51	1100		60	56	830
60	46	930		65	52	750
65	41	780		70	48	680
70	35	640		75	44	610
75				80	40	520
80				85	35	440



LINE THROUGH CENTERLINE OF ROTATION

AREA OF OPERATION