



# HT25KX ET25K(X)

## FEATURES

- \* 5,000 lb. Maximum Lifting Capacity
- \* 25,000 ft.-lb. Moment Rating
- \* Electric-Hydraulic (ET) or Fully Hydraulic (HT)
- \* Power Rotation
- \* Meets ANSI B30.5 Safety Standards
- \* Meets OSHA 1910.180 Requirements

### ET25K & ET25KX:

- \* Boom Length: 10-20 ft.
- KX:** Hydraulic Extension 10-16 ft., Manual Extension 16-20 ft.
- K:** Manual Extension 10-20 ft.
- \* High Efficiency Hydraulic Planetary Winch
- \* Continuous Power Rotation
- \* Load-Holding Counterbalance on All Cylinders
- \* Remote Control Pendant: 25 ft. Cord and Quick Disconnect

### HT25KX:

- \* Boom Length: 10-20 ft.
- KX:** Hydraulic Extension 10-16 ft., Manual Extension 16-20 ft.
- \* High Efficiency Hydraulic Planetary Winch: 55 ft./min.
- \* 400 Power Rotation
- \* Load-Holding Counterbalance on All Cylinders
- \* Remote Control Pendant: 25 ft. Cord and Quick Disconnect
- \* Hydraulic Requirements -- Standard: 2 GPM @ 3,000 PSI, 4 gal. Reservoir; Proportional: 4 GPM @ 3,000 PSI, 8 gal. Reservoir

## MINIMUM REQUIREMENTS

- \* 10,500 lb. GVWR Chassis
- \* Outriggers: Rear
- \* PTO, Pump and Reservoir (HT Only)

## LIFTING CAPACITIES

REACH (FT.)	CAPACITY (LBS.)
5	5,000
10	2,500
16	1,575
20	1,250

## STANDARD EQUIPMENT

- \* Capacity Overload Shut-Off System
- \* Anti-Two-Blocking System
- \* 80 ft. of 5/16" Aircraft-Quality Wire Rope
- \* Snatch Block with Swivel Hook Safety Latch
- \* Master Disconnect Switch (ET)
- \* Battery Cable: 25 ft. (ET)

## OPTIONAL EQUIPMENT

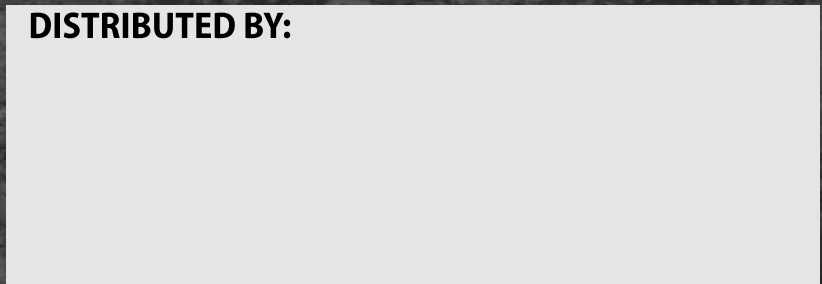
- \* Radio Remote Controls
- \* Hydraulic and Manual Outrigger Packages
- \* Hydraulic Pumps and Reservoirs
- \* Mounting Pedestal for Platform Bodies
- \* Boom Rests

Specifications subject to change without notice.

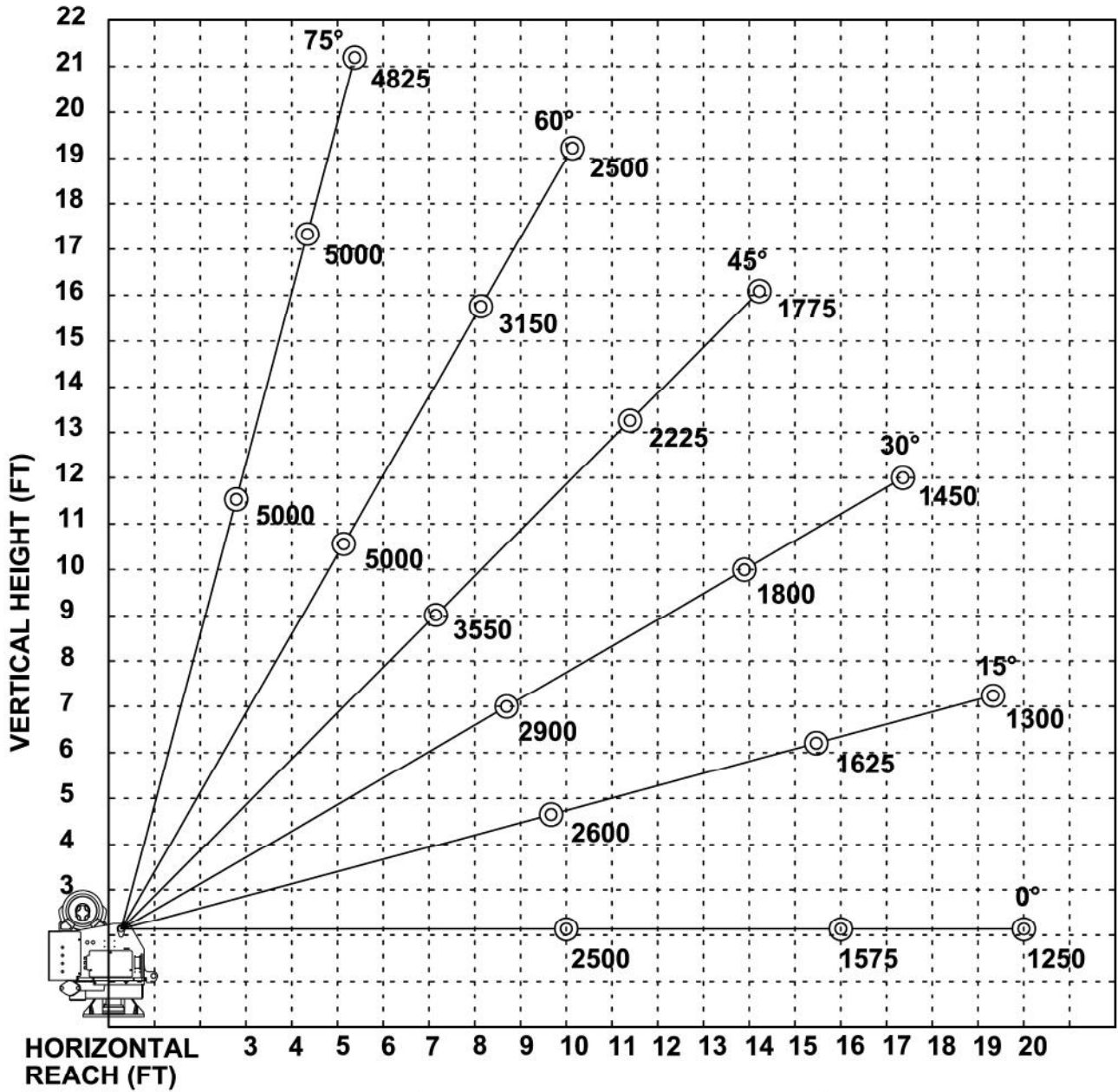


12110 Best Place Cincinnati, OH 45241  
800-226-2238 internetsales@venturo.com  
www.venturo.com

DISTRIBUTED BY:



## ET/HT25KX - 10-16-20 BOOM MAXIMUM CAPACITY CHART



**MUST USE SNATCH BLOCK  
FOR LOADS OF 2500 LBS.  
AND GREATER**