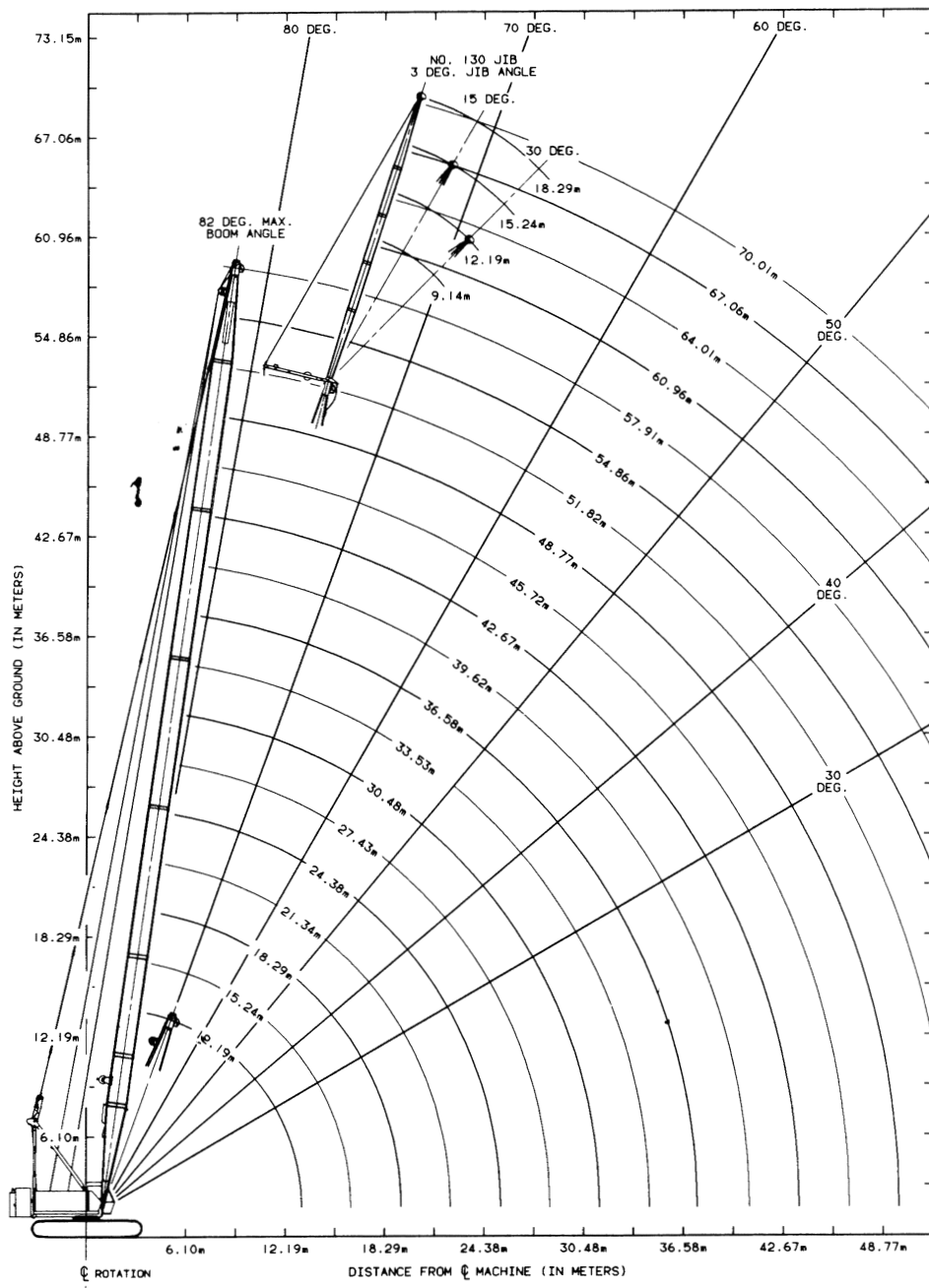
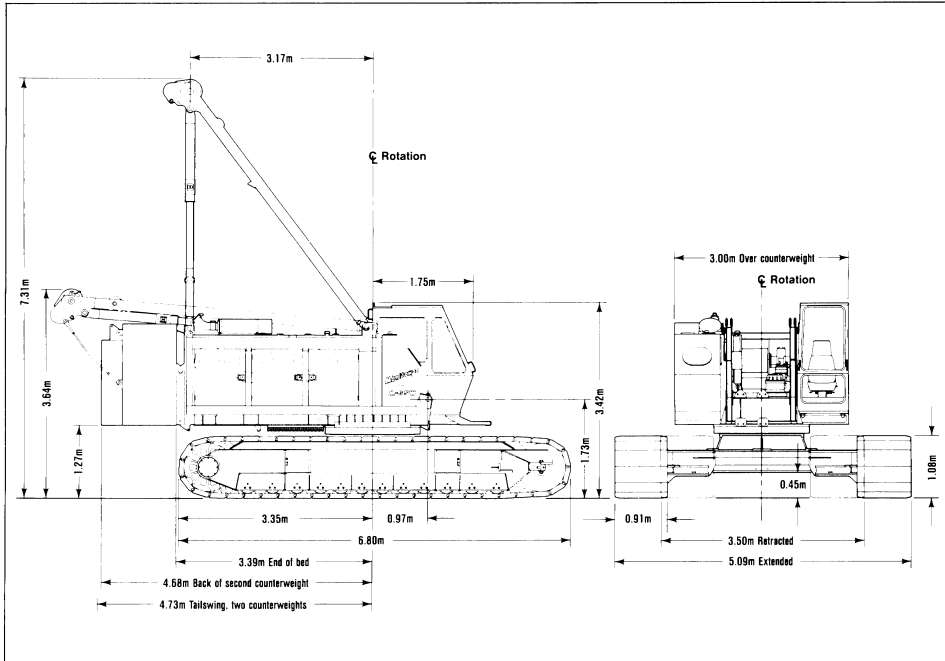


MANITOWOC M-65W – 65-MTon liftcrane

6,804 KG CLAMSHELL 6,124 KG DRAGLINE



MANITOWOC M-65W – Outline dimensions



SPECIFICATIONS

BASIC MACHINE

Upperworks

ROTATING BED: Fabricated steel rotating bed is mounted on 1.65m diameter turntable bearing.

DRUMS: Basic machine is equipped with two full-width drums. Drums are 457mm wide and 419mm diameter. Each drum is antifriction mounted on a separate shaft and is driven independently by a fixed-displacement hydraulic motor through a reduction gear. Internal-expanding drum clutches are spring set, air released. External-contracting drum brakes are air applied, spring released. Parking brakes are spring set, air released.

BOOM HOIST: Rear-mounted independent two-drum boom hoist is powered by a fixed-displacement hydraulic motor coupled to a planetary reduction, and is equipped with ratchet and pawl.

SWING SYSTEM: Front-mounted independent swing is powered by a fixed-displacement hydraulic motor coupled to an internal brake and planetary reduction. Includes gear-segment type swing lock.

OPERATOR'S STATION: Fully enclosed and insulated steel module mounted to the left front corner of rotating bed. Module is equipped with sliding door, large safety glass windows on all sides and roof. Electric signal horn, cab space heater, upper front windshield wiper, dome light, and air circulating fan are standard equipment.

Lowerworks

CARBODY: Single-piece steel fabricated carbody incorporates wide wings that facilitate removal from pockets in crawler frames. Crawlers hydraulically extend to 5.09m and hydraulically retract to 3.50m.

CRAWLERS: Crawler assemblies are 6.80m long reinforced steel fabrications with 914mm closed treads and sealed "low-maintenance" rollers. Each crawler is powered independently by a variable-displacement hydraulic motor driving through a planetary reduction. Crawlers provide counter-rotation capability.

ENGINE/TRANSMISSION: Cummins 6 CT 8.3 diesel engine rated at 157 KW at 2200 RPM provides independent power for all machine operations through the multi-hydraulic-pump transmission. Power system also includes engine block heater (120V), high silencing muffler, hydraulic oil cooler, radiator, and fan.

CONTROLS: Modulating electric-over-hydraulic controls provide infinite function speed response directly proportional to control movement. Selector switch permits hoisting drums to be operated in power-down (liftcrane), free-fall (excavator), or clamshell mode.

MANITOWOC M-65W – Performance data

Wire Rope Specifications					
Application	Dia.	Description	Breaking Strength	Weight	Max. Operating Length
Lift	19mm	6 x 25 EIPS Regular Lay	26,672 Kgs.	1.55 Kgs./M	217.63M Hoist 217.63M Whip 76.81M Auxiliary*
Clam	19mm	6 x 25 EIPS Regular Lay	26,672 Kgs.	1.55 Kgs./M	70.10M Closing 54.86M Holding
Drag	19mm	6 x 25 EIPS Lang Lay	26,672 Kgs.	0.91 Kgs./M	57.91M Hoist 30.48M Drag
Boom Hoist	14mm	6 x 26 EIPS Alternate Lay	15,241 Kgs.	0.91 Kgs./M	173.74M

*Optional drum mounted on rear drum shaft for 3-drum applications. 6,804-kg. line pull.

Line Pull Vs. Line Speed* — Line Pull Infinitely Variable From 0 to 6,804 Kgs.			
Line Pull	Line Speed	Divert 1 Travel Pump	Divert 2 Travel Pumps
0 Kgs.	74.68 MPM	116.43 MPM	158.50 MPM
2,268 Kgs.	73.76 MPM	114.60 MPM	155.45 MPM
4,536 Kgs.	72.54 MPM	112.78 MPM	120.70 MPM
6,804 Kgs.	71.32 MPM	80.47 MPM	80.47 MPM

*Chart data based on 419mm diameter smooth drum, 5th layer.

SWING SPEED: 3.5 RPM.

TRAVEL SPEED: 1.61 KPH.

GRADEABILITY: 30%.

BOOM HOIST SPEED: 57.9m boom, 0° to 82° — 1 minute, 27 seconds.

LIFTCRANE ATTACHMENT

BASIC BOOM: The liftcrane is equipped with 12.19m No. 46 basic boom consisting of 6.40m butt and 5.79m top with five 508mm diameter antifriction-bearing-mounted steel sheaves. Includes rope guides, boom hoist wire rope, boom angle indicator, and hook and weight ball.

Gantry with telescopic backhitch and power operated back-hitch pins.

Telescopic air-cushioned boom stop.

Automatic boom stop.

COUNTERWEIGHT: Two-piece removable counterweight, total 19,051 Kgs., with power-operated pins and with counterweight-handling pendants.

OPTIONAL EQUIPMENT

BOOM AND JIB:

3.05m No. 46 Boom insert with pendants

6.10m No. 46 Boom insert with pendants

9.14m No. 46 Boom insert with pendants

9.14m No. 130 Jib with mounting parts

3.05m Jib insert with pendants

ATTACHMENTS:

Manitowoc 68-mton five-sheave load block

Single-sheave upper boom point (whipline)

Pendant links for load-moment sensor pin

Dragline fairlead

Tagline, Rud-O-Matic No. 1248, two barrel

Liftcrane lagging, 457mm diameter, grooved for

19mm diameter rope — front/rear

Clamshell/dragline lagging, 457mm diameter, grooved

for 19mm diameter rope — front/rear

Lift/clam/drag wire rope, 19mm diameter, 6x25 EIPS

Machine preparation for X-SPANDER®

X-SPANDER attachment

Other attachments on request

BASIC MACHINE OPTIONS:

Split drum shaft assembly in place of

single drum shaft

Drum rotation indicators (2)

Windshield wiper, lower front window

Windshield wiper, roof window

Ether starting aid

Alcohol injector in air line

Fire extinguisher

Air conditioner in operator's cab

Hydraulic third drum on front of rotating bed,

4,400 kg. line pull

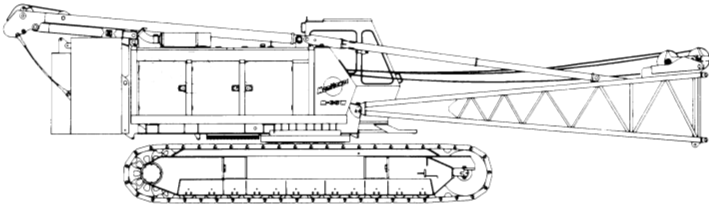
Special paint — machinery enamel in color other than

Manitowoc standard

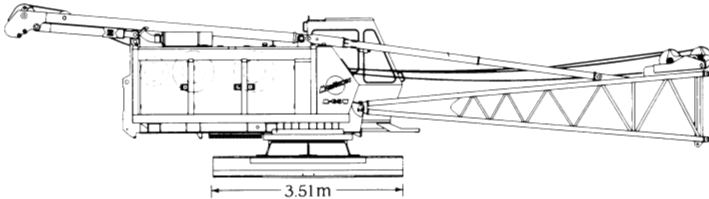
Block up limit control for load or auxiliary line

Bail limit control for hoist drums

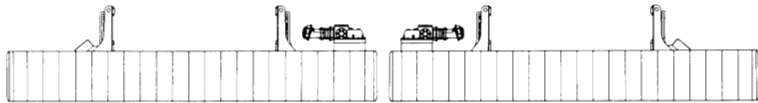
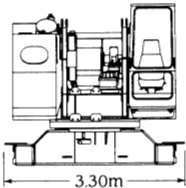
MANITOWOC M-65W – Shipping data (all dimensions length x width x height)



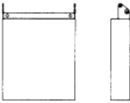
Complete liftcrane less boom top: 59,687 Kgs.
13.03m x 3.51m x 3.66m



Basic machine with boom butt & gantry: 22,544 Kgs.
13.30m x 3.30m x 3.20m



Crawler frames: Each 8,959 Kgs.
6.81m x 1.75m x 1.09m



Outer counter-weight: 3,175 Kgs.
1.83m x 1.22m x 0.36m



Inner counterweight: 15,876 Kgs.
3.00m x 1.17m x 1.78m



Boom top: 907 Kgs.
7.39m x 1.32m x 1.45m

Unit	Weight (Kgs.)	Dimensions (L x W x H)
3.05m Boom insert	259	3.20m x 1.32m x 1.40m
6.10m Boom insert	440	6.25m x 1.32m x 1.40m
9.14m Boom insert	624	9.30m x 1.32m x 1.40m
9.14m Basic jib	699	Pack inside 9.14m boom insert
3.05m Jib insert	86	Pack inside 9.14m boom insert
68-MTon hook block with steel sheaves	621	1.55m x 0.64m x 0.64m
Pendant box	599	1.52m x 1.45m x 0.56m
Miscellaneous box, including weight ball	1,025	2.18m x 0.84m x 0.69m

MANITOWOC M-65W – Liftcrane capacities boom no. 46

19 050 KG COUNTERWEIGHT

6 807 MM CRAWLERS EXTENDED

360° RATING

Capacities for various boom lengths and operating radii are for freely suspended loads and are calculated to comply with BS 1757-1986 clause 9, I.S.O. 4305 and BS 2573 part 1 – 1983 tables 5(a) and 6(a). Capacities based on structural competence are denoted by an asterisk(*).

Upper boom point capacity for liftcrane service with single part whip line is 6 800kg. In all cases, upper boom point capacities cannot exceed those listed for the main boom capacity.

Weight of jib, all load blocks, hooks, weight ball, slings hoist lines, etc., beneath boom and jib point sheaves, is considered part of the main boom load. Boom is not to be lowered beyond radii where combined weights are greater than rated capacity. Where no capacity is shown, operation is not intended or approved.

Machine to operate in a level position on a firm uniformly supporting surface with crawlers fully extended (5 093mm) and gantry up. Refer to rigging no. 168744 and wire rope specification chart no. 7536-A. Crane operator judgement must be used to allow for dynamic load effects of swinging, hoisting or lowering, travel, wind conditions, as well as adverse operating conditions and physical machine depreciation.

Machine may be operated in winds up to those shown in table provided crane operator judgement is used to allow for wind effect on the lifted load and other considerations noted on the capacity chart are followed. Wind will have a considerable effect on a load with a large 'sail area' and must be compensated for accordingly by reducing load ratings, reducing operating speeds or by a combination of both. Recommend stopping operation when wind is above those shown in table and tying off or lowering boom when wind is above 16 m/s.

Machine to travel on a firm, level and uniformly supporting surface and boom within the boom angle range shown in capacity chart.

Operating radius is the horizontal distance from the axis of rotation to the centre of vertical hoist line or load block. Boom angle is the angle between horizontal and centreline of boom butt and inserts, and is an indication of operating radius. In all cases, operating radius shall govern capacity. Boom point elevation is vertical distance from ground level to centreline of boom point shaft.

Machine equipped with 6 807mm extendible crawlers, 914mm treads, 5 182mm retractable gantry, 12 part boom hoist reeving, two 32mm boom pendants, 1st counterweight = 15 875kg, and 2nd counterweight = 3 175kg.

WIND LIMITS DURING OPERATION	
MAXIMUM WIND VELOCITY	BOOM LENGTH
m/s	METERS
14	12.2 - 36.6
10	39.6 - 48.8
7	51.8 - 57.9

MAXIMUM BOOM AND JIB LENGTHS LIFTED UNASSISTED				DEDUCT FROM CAPACITIES WHEN JIB IS ATTACHED	
OVER END OF BLOCKED CRAWLERS		OVER SIDE OF EXTENDED CRAWLERS			
BOOM LGTH.	JIB NO. 130	BOOM LGTH.	JIB NO. 130	JIB LGTH.	JIB NO. 130
57.9m	---	57.9m	---	9.1m	820 kg
54.9m	15.2m	54.9m	---	12.2m	1 000 kg
51.8m	18.3m	51.8m	12.2m	15.2m	1 180 kg
		48.8m	18.3m	18.3m	1 410 kg
LOAD BLOCK, HOOK AND WEIGHT BALL ON GROUND AT START.					

LOAD BLOCK, HOOK AND WEIGHT BALL ON GROUND AT START.

CONSULT JIB CHART FOR JIB CAPACITIES.

BOOM LGTH. METERS	BOOM LGTH. FEET	OPER. RAD. METERS	BOOM ANG. DEG.	BOOM POINT ELEV. METERS	CAPACITY KILOGRAMS	BOOM LGTH. METERS	BOOM LGTH. FEET	OPER. RAD. METERS	BOOM ANG. DEG.	BOOM POINT ELEV. METERS	CAPACITY KILOGRAMS
12.2	40	3.7	78.4	13.6	70 000*	3.7	80.8	16.7	64 500*		
		4.0	77.0	13.5	70 000*	4.0	79.6	16.7	63 800*		
		4.3	75.5	13.5	69 800*	4.3	78.4	16.6	63 200*		
		4.6	74.0	13.4	65 200*	4.6	77.3	16.5	62 500*		
		4.9	72.5	13.3	61 000*	4.9	76.1	16.5	60 900*		
		5.2	71.0	13.2	55 000	5.2	74.9	16.4	55 000		
		5.5	69.4	13.1	49 800	5.5	73.7	16.3	49 800		
		5.8	67.9	12.9	45 600	5.8	72.5	16.2	45 500		
		6.1	66.3	12.8	41 900	6.1	71.3	16.1	41 900		
		6.4	64.7	12.6	38 800	6.4	69.1	16.0	38 800		
		6.7	63.1	12.5	35 100	6.7	67.9	15.8	35 100		
		7.0	61.5	12.3	33 700	7.0	66.7	15.7	33 700		
		7.3	59.8	12.1	31 700	7.3	65.3	15.6	31 600		
		7.6	58.1	11.9	29 800	7.6	65.1	15.4	29 800		
		7.9	56.4	11.7	28 200	7.9	63.8	15.3	28 100		
		8.2	54.6	11.5	26 700	8.2	62.5	15.1	26 600		
15.2	50	8.5	52.8	11.3	25 400	8.5	61.2	15.0	25 300		
		8.8	51.0	11.0	24 100	8.8	59.9	14.8	24 100		
		9.1	49.1	10.8	23 000	9.1	58.5	14.6	22 900		
		9.4	45.1	10.2	21 000	9.4	55.7	14.2	21 000		
		10.4	40.8	9.5	19 400	10.4	52.9	13.7	19 300		
		11.0	36.0	8.7	18 000	11.0	49.9	13.2	17 900		
		11.6	30.7	7.7	16 700	11.6	46.8	12.7	16 600		
		12.2	24.2	6.5	15 600	12.2	43.5	12.0	15 500		
						13.7	34.2	10.1	13 300		
						15.2	21.5	7.1	11 600		

MANITOWOC M-65W – Liftcrane capacities boom no. 46

19 050 KG COUNTERWEIGHT

6 807 MM CRAWLERS EXTENDED

360° RATING

BOOM LGTH. METERS	BOOM LGTH. FEET	OPER. RAD. METERS	BOOM ANG. DEG.	BOOM POINT ELEV. METERS	CAPACITY KILOGRAMS	BOOM LGTH. METERS	BOOM LGTH. FEET	OPER. RAD. METERS	BOOM ANG. DEG.	BOOM POINT ELEV. METERS	CAPACITY KILOGRAMS
18.3	60	4.0	81.4	19.8	57 500*	24.4	80	11.0	66.4	24.0	17 600
		4.3	80.4	19.7	56 800*			11.6	64.8	23.7	16 300
		4.6	79.4	19.7	56 200*			12.2	63.2	23.4	15 200
		4.9	78.4	19.6	55 300*			13.7	59.1	22.5	13 000
		5.2	77.5	19.5	54 100*			15.2	54.8	21.5	11 200
		5.5	76.5	19.4	49 800			16.8	50.2	20.3	9 900
		5.8	75.5	19.4	45 400			18.3	45.3	18.9	8 700
		6.1	74.5	19.3	41 800			19.8	40.0	17.2	7 800
		6.4	73.5	19.2	38 700			21.3	33.9	15.1	7 100
		6.7	72.5	19.1	36 000			22.9	26.7	12.5	5 400
		7.0	71.5	19.0	33 600	27.4	90	24.4	16.8	8.5	5 800
		7.3	70.5	18.9	31 500			5.2	81.7	28.8	39 500*
		7.6	69.5	18.8	29 700			5.5	81.0	28.8	38 800*
		7.9	68.4	18.6	28 000			5.8	80.4	28.7	38 200*
		8.2	67.4	18.5	26 500			6.1	79.8	28.7	37 600*
		8.5	66.3	18.4	25 200			6.4	79.1	28.6	37 000*
		8.8	65.3	18.2	23 900			6.7	78.5	28.6	35 800
		9.1	64.2	18.1	22 900			7.0	77.8	28.5	33 400
		9.8	62.1	17.8	20 900			7.3	77.1	28.4	31 300
		10.4	59.9	17.4	19 200			7.6	76.5	28.3	29 500
21.3	70	11.0	57.6	17.0	17 800			7.9	75.8	28.3	27 800
		11.6	55.3	16.6	16 500			8.2	75.2	28.2	26 300
		12.2	52.9	16.2	15 400			8.5	74.5	28.1	24 900
		13.7	46.6	14.8	13 100			8.8	73.9	28.0	23 700
		15.2	39.5	13.2	11 400			9.1	73.2	27.9	22 600
		16.8	31.0	10.9	10 100			9.8	71.8	27.7	20 600
		18.3	19.5	7.6	9 000			10.4	70.5	27.5	19 000
		4.3	81.8	22.8	51 100*			11.0	69.1	27.3	17 500
		4.6	81.0	22.8	50 400*			11.6	67.8	27.0	16 300
		4.9	80.1	22.7	49 300*			12.2	66.4	26.8	15 100
		5.2	79.3	22.6	48 300*			13.7	62.8	26.0	12 900
		5.5	78.4	22.6	47 400*			15.2	59.2	25.2	11 200
		5.8	77.6	22.5	45 400			16.8	55.4	24.2	9 800
		6.1	76.8	22.4	41 800			18.3	51.4	23.0	8 700
		6.4	75.9	22.4	38 600			19.8	47.1	21.7	7 800
		6.7	75.1	22.3	35 900			21.3	42.6	20.1	7 000
		7.0	74.2	22.2	33 600			22.9	37.6	18.3	6 300
		7.3	73.4	22.1	31 500	30.5	100	24.4	31.9	16.0	5 800
		7.6	72.5	22.0	29 600			25.9	25.1	13.1	5 300
		7.9	71.6	21.9	28 000			27.4	15.8	8.9	4 800
24.4	80	8.2	70.8	21.8	26 500			5.5	81.9	31.9	35 100*
		8.5	69.9	21.7	25 100			5.8	81.4	31.8	34 600*
		8.8	69.0	21.6	23 900			6.1	80.8	31.8	34 100*
		9.1	68.1	21.4	22 800			6.4	80.2	31.7	33 600*
		9.8	66.4	21.2	20 800			6.7	79.6	31.7	33 100*
		10.4	64.5	20.9	19 100			7.0	79.0	31.6	32 600*
		11.0	62.7	20.6	17 700			7.3	78.5	31.5	31 200
		11.6	60.8	20.2	16 500			7.6	77.9	31.5	29 400
		12.2	58.9	19.9	15 300			7.9	77.3	31.4	27 700
		13.7	54.0	18.8	13 100			8.2	76.7	31.3	26 200
		15.2	48.7	17.6	11 400			8.5	76.1	31.3	24 900
		16.8	42.9	16.1	10 000			8.8	75.5	31.2	23 700
		18.3	36.4	14.2	8 900			9.1	74.9	31.1	22 500
		19.8	28.6	11.7	8 000			9.8	73.7	30.9	20 500
		21.3	18.0	8.1	7 200			10.4	72.5	30.7	18 900
		4.9	81.4	25.8	45 100*			11.0	71.3	30.5	17 400
		5.2	80.6	25.7	44 400*			11.6	70.1	30.3	16 200
		5.5	79.9	25.7	43 600*			12.2	68.9	30.1	15 100
		5.8	79.2	25.6	42 900*			13.7	65.7	29.4	12 800
		6.1	78.5	25.6	41 700*			15.2	62.6	28.7	11 100
		6.4	77.7	25.5	38 600			16.8	59.3	27.8	9 700
		6.7	77.0	25.4	35 800			18.3	55.8	26.8	8 600
		7.0	76.2	25.4	33 500			19.8	52.3	25.7	7 700
		7.3	75.5	25.3	31 400			21.3	48.5	24.4	6 900
		7.6	74.8	25.2	29 500			22.9	44.6	22.9	6 300
		7.9	74.0	25.1	27 800			24.4	40.3	21.2	5 700
		8.2	73.3	25.0	26 400			25.9	35.6	19.2	5 200
		8.5	72.5	24.9	25 000			27.4	30.2	16.8	4 700
		8.8	71.8	24.8	23 800			29.0	23.8	13.8	4 300
		9.1	71.0	24.7	22 700						
		9.8	69.5	24.5	20 700						
		10.4	67.9	24.2	19 000						

MANITOWOC M-65W – Liftcrane capacities boom no. 46

19 050 KG COUNTERWEIGHT

6 807 MM CRAWLERS EXTENDED

360° RATING

BOOM LGTH. METERS	BOOM LGTH. FEET	OPER. RAD. METERS	BOOM ANG. DEG.	BOOM POINT ELEV. METERS	CAPACITY KILOGRAMS	BOOM LGTH. METERS	BOOM LGTH. FEET	OPER. RAD. METERS	BOOM ANG. DEG.	BOOM POINT ELEV. METERS	CAPACITY KILOGRAMS
33.5	11.0	6.1	81.6	34.9	31 200*	39.6	13.0	6.7	82.0	40.9	24 600*
		6.4	81.1	34.8	30 800*			7.0	81.6	40.9	24 300*
		6.7	80.6	34.8	30 400*			7.3	81.1	40.8	24 100*
		7.0	80.0	34.7	29 900*			7.6	80.7	40.8	23 800*
		7.3	79.5	34.6	29 500*			7.9	80.3	40.7	23 600*
		7.6	79.0	34.6	29 100*			8.2	79.8	40.7	23 300*
		7.9	78.5	34.5	27 600			8.5	79.4	40.6	23 000*
		8.2	77.9	34.5	26 100			8.8	78.9	40.6	22 800*
		8.5	77.4	34.4	24 800			9.1	78.5	40.5	22 300
		8.8	76.9	34.3	23 500			9.8	77.6	40.4	20 300
		9.1	76.3	34.2	22 400			10.4	76.6	40.2	18 600
		9.8	75.2	34.1	20 500			11.0	75.7	40.1	17 100
		10.4	74.2	33.9	18 800			11.6	74.8	39.9	15 900
		11.0	73.1	33.7	17 300			12.2	73.9	39.7	14 800
		11.6	72.0	33.5	16 100			13.7	71.6	39.2	12 500
		12.2	70.9	33.3	15 000			15.2	69.3	38.7	10 700
		13.7	68.1	32.7	12 700			16.8	66.9	38.1	9 400
		15.2	65.2	32.1	10 900			18.3	64.4	37.4	8 300
		16.8	62.3	31.3	9 600			19.8	62.0	36.6	7 300
		18.3	59.3	30.4	8 500			21.3	59.4	35.7	6 600
		19.8	56.2	29.5	7 500			22.9	56.8	34.8	5 900
		21.3	53.0	28.4	6 800			24.4	54.1	33.7	5 300
		22.9	49.7	27.1	6 100			25.9	51.4	32.5	4 800
		24.4	46.1	25.7	5 500			27.4	48.5	31.2	4 400
		25.9	42.4	24.1	5 000			29.0	45.4	29.8	4 000
		27.4	38.3	22.3	4 600			30.5	42.2	28.2	3 700
		29.0	33.8	20.2	4 200			32.0	38.8	26.4	3 400
		30.5	28.8	17.6	3 900			33.5	35.1	24.3	3 100
		32.0	22.7	14.4	3 600			35.1	31.0	21.9	2 800
								36.6	26.4	19.1	2 600
								38.1	20.8	15.6	2 400
36.6	12.0	6.4	81.9	37.9	27 800*	42.7	14.0	7.3	81.8	43.9	21 800*
		6.7	81.4	37.9	27 400*			7.6	81.4	43.9	21 600*
		7.0	80.9	37.8	27 100*			7.9	81.0	43.8	21 400*
		7.3	80.4	37.7	26 800*			8.2	80.5	43.8	21 200*
		7.6	79.9	37.7	26 500*			8.5	80.1	43.7	21 000*
		7.9	79.4	37.6	26 200*			8.8	79.7	43.7	20 700*
		8.2	78.9	37.6	25 900*			9.1	79.3	43.6	20 500*
		8.5	78.5	37.5	24 700			9.8	78.5	43.5	20 000*
		8.8	78.0	37.4	23 400			10.4	77.6	43.4	18 500
		9.1	77.5	37.4	22 400			11.0	76.8	43.2	17 000
		9.8	76.5	37.2	20 400			11.6	75.9	43.1	15 700
		10.4	75.5	37.1	18 700			12.2	75.1	42.9	14 600
		11.0	74.5	36.9	17 200			13.7	73.0	42.5	12 400
		11.6	73.5	36.7	16 000			15.2	70.8	41.9	10 700
		12.2	72.5	36.5	14 900			16.8	68.6	41.4	9 200
		13.7	70.0	36.0	12 600			18.3	66.4	40.7	8 200
		15.2	67.4	35.4	10 800			19.8	64.1	40.0	7 200
		16.8	64.8	34.7	9 500			21.3	61.8	39.2	6 400
		18.3	62.1	33.9	8 400			22.9	59.5	38.4	5 800
		19.8	59.4	33.1	7 400			24.4	57.1	37.4	5 200
		21.3	56.6	32.1	6 700			25.9	54.6	36.4	4 700
		22.9	53.6	31.0	6 000			27.4	52.0	35.2	4 300
		24.4	50.6	29.8	5 400			29.0	49.4	33.9	3 900
		25.9	47.4	28.5	4 900			30.5	46.6	32.5	3 500
		27.4	44.0	27.0	4 500			32.0	43.7	31.0	3 200
		29.0	40.5	25.3	4 100			33.5	40.6	29.3	2 900
		30.5	36.6	23.3	3 800			35.1	37.3	27.4	2 700
		32.0	32.3	21.1	3 400			36.6	33.8	25.2	2 400
		33.5	27.5	18.4	3 200			38.1	29.9	22.8	2 300
		35.1	21.7	15.0	2 900			39.6	25.4	19.8	2 000
								41.1	20.0	16.1	1 900

MANITOWOC M-65W – Liftcrane capacities boom no. 46

19 050 KG COUNTERWEIGHT

6 807 MM CRAWLERS EXTENDED

360° RATING

BOOM LGTH. METERS	BOOM LGTH. FEET	OPER. RAD. METERS	BOOM ANG. DEG.	BOOM POINT ELEV. METERS	CAPACITY KILOGRAMS	BOOM LGTH. METERS	BOOM LGTH. FEET	OPER. RAD. METERS	BOOM ANG. DEG.	BOOM POINT ELEV. METERS	CAPACITY KILOGRAMS
45.7	150	7.6	81.9	47.0	18 500*	51.8	170	18.3	70.8	50.6	7 800
		7.9	81.6	46.9	18 500*			19.8	69.0	50.0	6 900
		8.2	81.2	46.9	18 400*			21.3	67.1	49.4	6 100
		8.5	80.8	46.8	18 400*			22.9	65.3	48.7	5 500
		8.8	80.4	46.8	18 300*			24.4	63.4	47.9	4 900
		9.1	80.0	46.7	18 300*			25.9	61.5	47.1	4 400
		9.8	79.2	46.6	18 000*			27.4	59.6	46.3	3 900
		10.4	78.5	46.5	17 600*			29.0	57.6	45.3	3 600
		11.0	77.7	46.3	17 000			30.5	55.6	44.3	3 200
		11.6	76.9	46.2	15 700			32.0	53.5	43.2	2 900
		12.2	76.1	46.0	14 600			33.5	51.3	42.0	2 600
		13.7	74.1	45.6	12 300			35.1	49.1	40.8	2 400
		15.2	72.1	45.2	10 600			36.6	46.9	39.4	2 100
		16.8	70.1	44.6	9 200			38.1	44.5	37.9	1 900
		18.3	68.1	44.0	8 100			39.6	42.0	36.2	1 700
		19.8	66.0	43.4	7 200			41.1	39.4	34.4	1 500
		21.3	63.9	42.7	6 400			42.7	36.7	32.5	1 400
		22.9	61.7	41.9	5 700	54.9	180	9.1	81.7	56.0	11 700*
		24.4	59.5	41.0	5 100			9.8	81.0	55.9	11 600*
		25.9	57.3	40.0	4 600			10.4	80.4	55.8	11 500*
		27.4	54.9	39.0	4 200			11.0	79.8	55.7	11 400*
		29.0	52.6	37.9	3 800			11.6	79.1	55.6	11 300*
		30.5	50.1	36.6	3 400			12.2	78.5	55.4	11 100*
		32.0	47.6	35.3	3 200			13.7	76.8	55.1	10 700*
		33.5	44.9	33.8	2 900			15.2	75.2	54.7	10 200
		35.1	42.1	32.2	2 600			16.8	73.5	54.3	8 900
		36.6	39.2	30.4	2 400			18.3	71.9	53.8	7 800
		38.1	36.0	28.4	2 200			19.8	70.2	53.3	6 800
		39.6	32.6	26.1	2 000			21.3	68.5	52.7	6 000
		41.1	28.8	23.5	1 800			22.9	66.7	52.0	5 400
		42.7	24.5	20.5	1 600			24.4	65.0	51.3	4 800
		44.2	19.3	16.6	1 400			25.9	63.2	50.6	4 300
48.8	160	8.2	81.7	50.0	15 800*			27.4	61.4	49.8	3 900
		8.5	81.4	49.9	15 800*			29.0	59.6	48.9	3 500
		8.8	81.0	49.9	15 800*			30.5	57.7	48.0	3 100
		9.1	80.6	49.8	15 700*			32.0	55.8	47.0	2 800
		9.8	79.9	49.7	15 600*			33.5	53.9	45.9	2 500
		10.4	79.2	49.6	15 600*			35.1	51.9	44.7	2 300
		11.0	78.5	49.5	15 500*			36.6	49.8	43.5	2 000
		11.6	77.7	49.3	15 300*			38.1	47.7	42.1	1 900
		12.2	77.0	49.2	14 500			39.6	45.5	40.7	1 600
		13.7	75.1	48.8	12 200			41.1	43.2	39.1	1 400
		15.2	73.3	48.4	10 500			42.7	40.8	37.4	1 300
		16.8	71.4	47.9	9 100	57.9	190	9.8	81.5	59.0	10 100*
		18.3	69.5	47.3	8 000			10.4	80.9	58.9	10 000*
		19.8	67.6	46.7	7 000			11.0	80.3	58.8	9 800*
		21.3	65.6	46.0	6 300			11.6	79.7	58.7	9 700*
		22.9	63.6	45.3	5 600			12.2	79.1	58.5	9 500*
		24.4	61.6	44.5	5 000			13.7	77.5	58.2	9 100*
		25.9	59.5	43.6	4 500			15.2	76.0	57.9	8 700*
		27.4	57.4	42.7	4 100			16.8	74.4	57.4	8 400*
		29.0	55.3	41.7	3 700			18.3	72.8	57.0	7 700
		30.5	53.1	40.6	3 400			19.8	71.3	56.5	6 700
		32.0	50.8	39.3	3 000			21.3	69.7	55.9	5 900
		33.5	48.4	38.0	2 800			22.9	68.0	55.3	5 300
		35.1	46.0	36.6	2 500			24.4	66.4	54.7	4 700
		36.6	43.4	35.0	2 300			25.9	64.7	54.0	4 200
		38.1	40.7	33.3	2 100			27.4	63.1	53.2	3 800
		39.6	37.9	31.5	1 900			29.0	61.3	52.4	3 400
		41.1	34.8	29.4	1 700			30.5	59.6	51.6	3 000
		42.7	31.5	27.0	1 500			32.0	57.8	50.6	2 700
		44.2	27.9	24.3	1 400			33.5	56.0	49.6	2 400
51.8	170	8.8	81.5	52.9	13 600*			35.1	54.2	48.5	2 200
		9.1	81.2	52.9	13 600*			36.6	52.3	47.4	1 900
		9.8	80.5	52.8	13 500*			38.1	50.4	46.2	1 700
		10.4	79.8	52.7	13 400*			39.6	48.4	44.8	1 500
		11.0	79.1	52.6	13 300*			41.1	46.3	43.4	1 400
		11.6	78.5	52.4	13 200*						
		12.2	77.8	52.3	13 100*						
		13.7	76.0	52.0	12 100						
		15.2	74.3	51.5	10 300						
		16.8	72.5	51.1	9 000						

MANITOWOC M-65W – Liftcrane jib capacities

(jib no. 130 with 3 658mm strut on boom no. 46)

19 050 KG COUNTERWEIGHT

6 807 MM CRAWLERS EXTENDED

360° RATING

Chart supplements boom capacity chart no. 7534-AM. Capacities for various boom lengths, jib lengths and jib operating radii are for freely suspended loads and are calculated to comply with BS 1757-1986 clause 9, I.S.O. 4305 and BS 2573 part 1 – 1983 tables 5(a) and 6(a). Capacities based on structural competence are denoted by an asterisk(*).

Weight of all load blocks, hooks, weight ball, slings hoist lines, etc., beneath boom and jib point sheaves, is considered part of the jib load. Boom and jib are not to be lowered beyond radii where combined weights are greater than rated capacity. Where no capacity is shown, operation is not intended or approved.

Machine to operate in a level position on a firm uniformly supporting surface with crawlers fully extended (5 093mm) and gantry up. Refer to boom rigging no. 168744, jib assembly no. 167951 and wire rope specification chart no. 7536-A. Crane operator judgement must be used to allow for dynamic load effects of swinging, hoisting or lowering, travel, wind conditions, as well as adverse operating conditions and physical machine depreciation.

Machine may be operated in winds up to those shown in table provided crane operator judgement is used to allow for wind effect on the lifted load and

other considerations noted on the capacity chart are followed. Wind will have a considerable effect on a load with a large 'sail area' and must be compensated for accordingly by reducing load ratings, reducing operating speeds or by a combination of both. Recommend stopping operation when wind is above those shown in table and tying off or lowering boom when wind is above 16 m/s.

Machine to travel on a firm, level and uniformly supporting surface and boom within the boom angle range shown in capacity chart.

Operating radius is the horizontal distance from the axis of rotation to the centre of vertical hoist line or load block. Boom angle is the angle between horizontal and centreline of boom butt and inserts, and is an indication of operating radius. In all cases, operating radius shall govern capacity. Jib point elevation is vertical distance from ground level to centreline of jib point shaft.

Machine equipped with 6 807mm extendible crawlers, 914mm treads, 5 182mm retractable gantry, 12 part boom hoist reeving, two 32mm boom pendants, 1st counterweight = 15 875kg, and 2nd counterweight = 3 175kg.

Maximum capacity on 19mm British Dyform 6/8 1960 N/mm² wire rope is 6 800kg.

WIND LIMITS DURING OPERATION		
MAXIMUM WIND VELOCITY m/s	BOOM LENGTH METERS	JIB LENGTH METERS
14	21.3 – 36.6	9.1 – 18.3
10	39.6 – 48.8	9.1 – 18.3
7	51.8 – 54.9	9.1 – 15.2
7	51.8	18.3

MAXIMUM BOOM AND JIB LENGTHS LIFTED UNASSISTED			
OVER END OF BLOCKED CRAWLERS		OVER SIDE OF EXTENDED CRAWLERS	
BOOM LGTH.	JIB NO. 130	BOOM LGTH.	JIB NO. 130
57.9m	---	57.9m	---
54.9m	15.2m	54.9m	---
51.8m	18.3m	51.8m	12.2m
		48.8m	18.3m

LOAD BLOCK, HOOK AND WEIGHT BALL ON GROUND AT START.

9.1m (30 FT.) JIB

BOOM LGTH. METERS	BOOM LGTH. FEET	JIB OPER. RAD. METERS	3 DEGREE OFFSET			15 DEGREE OFFSET			30 DEGREE OFFSET			JIB OPER. RAD. METERS
			BOOM ANG. DEG.	JIB POINT ELEV. METERS	CAPACITY KILOGRAMS	BOOM ANG. DEG.	JIB POINT ELEV. METERS	CAPACITY KILOGRAMS	BOOM ANG. DEG.	JIB POINT ELEV. METERS	CAPACITY KILOGRAMS	
21.3	70	9.1	76.3	31.6	6 800*	79.8	31.3	6 800*				9.1
		10.7	73.4	31.1	6 800*	76.8	30.9	6 800*	80.6	30.2	6 800*	10.7
		12.2	70.4	30.6	6 800*	73.8	30.3	6 800*	77.5	29.6	6 800*	12.2
		13.7	67.3	30.0	6 800*	70.7	29.7	6 800*	74.3	29.0	6 800*	13.7
		15.2	64.2	29.2	6 800*	67.5	29.0	6 800*	71.1	28.2	6 800*	15.2
		16.8	61.0	28.4	6 800*	64.3	28.1	6 800*	67.7	27.4	6 500*	16.8
		18.3	57.7	27.5	6 800*	60.9	27.2	6 800*	64.2	26.4	6 300*	18.3
		19.8	54.2	26.4	6 800*	57.4	26.1	6 800*	60.6	25.2	6 100*	19.8
		21.3	50.6	25.2	6 800*	53.7	24.8	6 800*	56.8	24.0	5 900*	21.3
		24.4	42.6	22.1	6 200	45.6	21.8	6 200	48.4	20.8	5 600*	24.4
		27.4	33.1	18.0	5 200	35.9	17.6	5 300				27.4
		30.5	19.8	11.6	4 400							30.5
24.4	80	9.1	77.6	34.7	6 800*	80.7	34.5	6 800*				9.1
		10.7	74.9	34.3	6 800*	78.0	34.1	6 800*				10.7
		12.2	72.2	33.8	6 800*	75.3	33.6	6 800*				12.2
		13.7	69.5	33.3	6 800*	72.5	33.0	6 800*	78.7	32.8	6 800*	13.7
		15.2	66.7	32.6	6 800*	69.7	32.4	6 800*	75.9	32.3	6 800*	15.2
		16.8	63.8	31.9	6 800*	66.8	31.6	6 800*	73.0	31.6	6 800*	16.8
		18.3	60.9	31.1	6 800*	63.9	30.8	6 800*	70.0	30.8	6 800*	18.3
		19.8	57.9	30.1	6 800*	60.8	29.8	6 800*	67.0	30.0	6 500*	19.8
		21.3	54.7	29.1	6 800*	57.6	28.7	6 800*	63.8	29.0	6 300*	21.3
		24.4	48.0	25.5	6 000	50.9	26.2	6 100	60.6	27.9	6 100*	24.4
		27.4	40.5	23.3	5 100	43.2	22.9	5 100	53.5	25.2	5 800*	27.4
		30.5	31.5	18.9	4 300	34.0	18.4	4 300				30.5

MANITOWOC M-65W – Liftcrane jib capacities

(jib no. 130 with 3 658mm strut on boom no. 46)

19 050 KG COUNTERWEIGHT

6 807 MM CRAWLERS EXTENDED

360° RATING

9.1m (30 FT) JIB

BOOM LGTH. METERS	BOOM LGTH. FEET	JIB OPER. RAD. METERS	3 DEGREE OFFSET			15 DEGREE OFFSET			30 DEGREE OFFSET			JIB OPER. RAD. METERS
			BOOM ANG. DEG.	JIB POINT ELEV. METERS	CAPACITY KILOGRAMS	BOOM ANG. DEG.	JIB POINT ELEV. METERS	CAPACITY KILOGRAMS	BOOM ANG. DEG.	JIB POINT ELEV. METERS	CAPACITY KILOGRAMS	
27.4	90	9.1	78.6	37.9	6 800	79.0	37.2	6 800	79.7	36.0	6 800	9.1
		10.7	76.2	37.5	6 800	76.6	36.8	6 800	77.1	35.5	6 800	10.7
		12.2	73.8	37.0	6 800	74.1	36.3	6 800	74.5	34.9	6 800	12.2
		13.7	71.3	36.5	6 800	71.5	35.7	6 800	71.9	34.2	6 800	13.7
		15.2	68.7	35.9	6 800	68.9	35.0	6 800	69.2	33.4	6 700	15.2
		16.8	66.2	35.3	6 800	66.3	34.2	6 800	66.4	32.6	6 500	16.8
		18.3	63.5	34.5	6 800	63.5	33.4	6 800	63.5	31.6	6 300	18.3
		19.8	60.8	33.7	6 800	60.7	32.4	6 800	60.5	29.3	6 000	19.8
		21.3	58.1	32.8	6 800	54.8	30.2	6 000	50.7	26.4	5 100	21.3
		24.4	52.2	30.5	5 900	48.4	27.4	5 000				24.4
		27.4	45.9	27.8	4 900	41.1	23.9	4 300				27.4
30.5	100	30.5	38.7	24.3	4 200	32.3	19.2	3 600				30.5
		33.5	30.1	19.7	3 600							33.5
33.5	110	9.1	79.5	41.0	6 800	79.9	40.4	6 800	80.5	39.2	6 800	9.1
		10.7	77.3	40.6	6 800	77.6	40.0	6 800	78.2	38.7	6 800	10.7
		12.2	75.0	40.2	6 800	75.3	39.5	6 800	75.8	38.2	6 800	12.2
		13.7	72.7	39.8	6 800	73.0	38.9	6 800	73.4	37.5	6 800	13.7
		15.2	70.4	39.2	6 800	70.6	38.3	6 800	70.9	36.8	6 800	15.2
		16.8	68.1	38.6	6 800	68.2	37.6	6 800	68.4	36.1	6 700	16.8
		18.3	65.7	37.9	6 800	65.8	36.9	6 800	65.8	35.2	6 500	18.3
		19.8	63.3	37.2	6 800	63.3	36.0	6 800	63.3	34.1	6 000	19.8
		21.3	60.8	36.3	6 800	58.0	34.0	5 900	54.7	30.7	5 000	21.3
		24.4	55.6	34.4	5 800	52.4	31.6	4 900	48.3	27.6	4 200	24.4
		27.4	50.0	32.0	4 800	46.3	28.6	4 200				27.4
36.6	120	30.5	44.0	29.0	4 100	39.3	24.9	3 500				30.5
		33.5	37.1	25.3	3 500							33.5
		36.6	28.9	20.5	3 000							36.6
39.6	130	9.1	80.3	44.1	6 800	80.6	43.5	6 800				9.1
		10.7	78.2	43.8	6 800	78.5	43.1	6 800				10.7
		12.2	76.1	43.4	6 800	76.4	42.7	6 800	79.1	41.9	6 800	12.2
		13.7	74.0	43.0	6 800	74.3	42.2	6 800	76.9	41.4	6 800	13.7
		15.2	71.9	42.5	6 800	72.1	41.6	6 800	72.4	40.8	6 800	15.2
		16.8	69.7	41.9	6 800	69.9	41.0	6 800	70.1	39.5	6 800	16.8
		18.3	67.5	41.3	6 800	67.7	40.3	6 800	67.8	38.7	6 600	18.3
		19.8	65.3	40.6	6 800	65.4	39.5	6 800	63.0	36.8	5 900	19.8
		21.3	63.0	39.8	6 800	60.6	37.7	5 800	57.8	34.6	4 900	21.3
		24.4	58.3	38.0	5 600	56.6	36.6	4 800	52.3	31.9	4 100	24.4
		27.4	53.4	35.9	4 700	53.3	33.0	4 000	46.2	28.7	3 500	27.4
42.7	140	30.5	48.1	33.3	3 900	44.4	29.8	3 400				30.5
		33.5	42.3	30.2	3 400	37.7	25.8	2 900				33.5
		36.6	35.7	26.3	2 900							36.6
		39.6	27.8	21.2	2 400							39.6
45.7	150	9.1	80.9	47.2	6 800							9.1
		10.7	79.0	46.9	6 800	79.3	46.3	6 800	79.8	45.1	6 800	10.7
		12.2	77.0	46.5	6 800	77.4	45.8	6 800	77.8	44.6	6 800	12.2
		13.7	75.1	46.1	6 800	75.4	45.4	6 800	75.8	44.1	6 800	13.7
		15.2	73.1	45.7	6 800	73.3	44.9	6 800	73.7	43.5	6 800	15.2
		16.8	71.1	45.2	6 800	71.3	44.3	6 800	71.6	42.8	6 800	16.8
		18.3	69.1	44.6	6 800	69.2	43.6	6 800	69.4	42.1	6 800	18.3
		19.8	67.0	43.9	6 800	67.1	42.9	6 800	65.0	40.4	5 800	19.8
		21.3	65.0	43.2	6 800	62.8	41.3	5 700	60.4	38.4	4 800	21.3
		24.4	60.7	41.6	5 500	58.3	39.3	4 700	55.5	36.0	4 000	24.4
		27.4	56.2	39.7	4 600	53.5	37.0	3 900	50.2	33.2	3 400	27.4
48.7	160	30.5	51.4	37.4	3 900	48.4	34.3	3 300				30.5
		33.5	46.3	34.6	3 200	42.7	30.9	2 800				33.5
		36.6	40.8	31.3	2 700	36.3	26.8	2 400				36.6
		39.6	34.4	27.3	2 300							39.6
		42.7	26.8	21.9	1 900							42.7

MANITOWOC M-65W – Liftcrane jib capacities

(jib no. 130 with 3 658mm strut on boom no. 46)

19 050 KG COUNTERWEIGHT

6 807 MM CRAWLERS EXTENDED

360° RATING

9.1m (30 FT) JIB

BOOM LGTH. METERS	BOOM LGTH. FEET	JIB OPER. RAD. METERS	3 DEGREE OFFSET			15 DEGREE OFFSET			30 DEGREE OFFSET			JIB OPER. RAD. METERS
			BOOM ANG. DEG.	JIB POINT ELEV. METERS	CAPACITY KILOGRAMS	BOOM ANG. DEG.	JIB POINT ELEV. METERS	CAPACITY KILOGRAMS	BOOM ANG. DEG.	JIB POINT ELEV. METERS	CAPACITY KILOGRAMS	
39.6	130	10.7	79.7	50.0	6 800*	80.0	49.4	6 800*	80.5	48.2	6 800*	10.7
		12.2	77.9	49.7	6 800*	78.2	49.0	6 800*	78.6	47.8	6 800*	12.2
		13.7	76.0	49.3	6 800*	76.3	48.6	6 800*	76.7	47.3	6 800*	13.7
		15.2	74.2	48.9	6 800*	74.4	48.1	6 800*	74.8	46.7	6 800*	15.2
		16.8	72.3	48.4	6 800*	72.5	47.5	6 800*	72.8	46.1	6 800*	16.8
		18.3	70.4	47.8	6 800*	70.6	47.0	6 800*	70.9	45.5	6 800*	18.3
		19.8	68.5	47.2	6 800*	68.7	46.3	6 800*	68.8	45.9	6 800*	19.8
		21.3	66.6	46.6	6 700	66.7	45.6	6 700	66.8	45.0	6 700	21.3
		22.8	64.7	45.9	5 400	64.7	44.8	5 400	64.8	44.2	5 400	22.8
		24.4	62.7	45.1	4 500	62.7	43.9	4 500	62.8	43.3	4 500	24.4
		27.4	58.5	43.3	3 700	58.5	41.9	3 700	58.6	41.3	3 700	27.4
		30.5	54.2	41.2	3 100	54.2	38.4	3 100	54.3	37.7	3 100	30.5
42.7	140	10.7	80.3	53.1	6 800*	80.6	52.5	6 800*	79.3	50.9	6 800*	10.7
		12.2	78.6	52.8	6 800*	78.9	52.1	6 800*	77.5	50.5	6 800*	12.2
		13.7	76.9	52.4	6 800*	77.1	51.7	6 800*	75.7	50.1	6 800*	13.7
		15.2	75.1	52.0	6 800*	75.4	51.3	6 800*	73.9	49.4	6 800*	15.2
		16.8	73.4	51.6	6 800*	73.6	50.8	6 800*	72.1	48.8	6 800*	16.8
		18.3	71.6	51.1	6 800*	71.8	50.2	6 800*	70.3	48.2	6 800*	18.3
		19.8	69.9	50.5	6 800*	70.0	49.6	6 800*	68.3	47.3	6 800*	19.8
		21.3	68.1	49.9	6 500	68.3	48.2	6 500	66.4	45.7	6 500	21.3
		22.8	66.4	49.3	5 300	66.3	47.1	5 300	64.4	44.1	5 300	22.8
		24.4	64.4	48.5	4 300	64.4	46.6	4 300	62.3	43.7	4 300	24.4
		27.4	60.6	46.9	3 600	60.6	44.6	3 600	58.1	41.4	3 600	27.4
		30.5	56.6	45.0	3 000	56.6	42.4	3 000	55.5	39.8	3 000	30.5
45.7	150	10.7	80.8	56.2	6 800*	79.5	55.3	6 800*	79.9	54.1	6 800*	10.7
		12.2	79.2	55.9	6 800*	77.9	54.9	6 800*	76.6	53.2	6 800*	12.2
		13.7	77.6	55.6	6 800*	76.2	54.5	6 800*	74.9	52.6	6 800*	13.7
		15.2	76.0	55.2	6 800*	74.6	54.0	6 800*	73.1	52.1	6 800*	15.2
		16.8	74.3	54.8	6 800*	72.9	53.5	6 800*	71.2	51.6	6 800*	16.8
		18.3	72.7	54.3	6 800*	71.2	52.9	6 700	69.6	50.7	6 700	18.3
		19.8	71.0	53.8	6 800*	69.7	52.4	6 700	68.0	50.2	6 700	19.8
		21.3	69.3	53.2	6 400	67.7	51.6	6 400	66.0	49.2	6 400	21.3
		22.8	67.6	52.6	5 200	66.0	50.1	5 200	64.2	48.3	5 200	22.8
		24.4	65.9	51.9	4 300	64.2	48.3	4 300	62.3	46.2	4 300	24.4
		27.4	62.4	50.4	3 600	62.3	46.2	3 600	60.5	44.2	3 600	27.4
		30.5	58.7	48.6	3 000	60.5	44.2	3 000	58.3	42.8	3 000	30.5
48.8	160	10.7	79.8	59.0	6 800*	80.1	58.4	6 800*	80.5	57.2	6 800*	10.7
		12.2	78.3	58.7	6 800*	78.5	58.0	6 800*	78.9	56.8	6 800*	12.2
		13.7	76.7	58.3	6 800*	77.0	57.6	6 800*	77.3	56.4	6 800*	13.7
		15.2	75.2	57.9	6 800*	75.4	57.2	6 800*	75.7	55.9	6 800*	15.2
		16.8	73.6	57.5	6 800*	73.8	56.7	6 800*	74.1	55.3	6 800*	16.8
		18.3	72.0	57.0	6 800*	72.2	56.2	6 600	70.8	54.1	6 600	18.3
		19.8	70.5	56.5	6 300	70.6	55.7	6 300	69.4	52.6	6 300	19.8
		21.3	68.9	55.9	5 100	69.0	55.1	5 100	67.4	51.6	5 100	21.3
		22.8	67.2	55.2	4 100	67.4	54.5	4 100	65.8	50.9	4 100	22.8
		24.4	65.6	54.6	3 400	65.8	53.8	3 400	64.2	50.2	3 400	24.4
		27.4	63.9	53.8	2 800	64.2	52.8	2 800	62.3	49.0	2 800	27.4
		30.5	60.5	52.2	2 300	62.3	51.8	2 300	60.3	47.7	2 300	30.5

MANITOWOC M-65W – Liftcrane jib capacities

(jib no. 130 with 3 658mm strut on boom no. 46)

19 050 KG COUNTERWEIGHT

6 807 MM CRAWLERS EXTENDED

360° RATING

9.1m (30 FT) JIB

BOOM LGTH. METERS	BOOM LGTH. FEET	JIB OPER. RAD. METERS	3 DEGREE OFFSET			JIB OPER. RAD. METERS	15 DEGREE OFFSET			JIB OPER. RAD. METERS	30 DEGREE OFFSET			JIB OPER. RAD. METERS
			BOOM ANG. DEG.	JIB POINT ELEV. METERS	CAPACITY KILOGRAMS		BOOM ANG. DEG.	JIB POINT ELEV. METERS	CAPACITY KILOGRAMS		BOOM ANG. DEG.	JIB POINT ELEV. METERS	CAPACITY KILOGRAMS	
5 1 8	1 7 0	12.2	80.3	62.1	6 800*		80.6	61.5	6 800*		81.0	60.4	6 500*	12.2
		13.7	78.9	61.8	6 800*			61.2	6 800*		79.5	60.0	6 500*	13.7
		15.2	77.4	61.5	6 800*			60.8	6 800*					15.2
		16.8	75.9	61.1	6 800*			77.6	6 800*					16.8
		18.3	74.5	60.7	6 800*			76.1	6 800*					18.3
		19.8	73.0	60.2	6 800*			74.7	6 800*					19.8
		21.3	71.5	59.7	6 200			73.1	6 400					21.3
		24.4	68.4	58.6	4 900			70.1	5 200					24.4
		27.4	65.3	57.2	4 000			67.0	4 200					27.4
		30.5	62.1	55.7	3 300			63.8	3 400					30.5
		33.5	58.8	53.9	2 600			60.4	2 800					33.5
		36.6	55.4	51.9	2 100			57.0	2 300					36.6
5 4 9	1 8 0	39.6	51.9	49.6	1 700			53.4	1 800					39.6
		42.7	48.1	47.0	1 400			49.6	1 400					42.7
		12.2	80.8	65.2	6 800*									12.2
		13.7	79.4	64.9	6 800*									13.7
		15.2	78.0	64.6	6 800*			79.6	6 200*					15.2
		16.8	76.6	64.2	6 300*			78.2	6 200*					16.8
		18.3	75.2	63.8	6 200*			76.8	6 100*					18.3
		19.8	73.8	63.4	6 100*			75.4	6 000*					19.8
		21.3	72.4	62.9	6 100*			74.0	5 900*					21.3
		24.4	69.5	61.8	4 800			71.1	5 100					24.4
		27.4	66.6	60.6	3 900			68.1	4 100					27.4
		30.5	63.6	59.1	3 200			65.1	3 300					30.5
		33.5	60.5	57.4	2 500			62.0	2 700					33.5
		36.6	57.3	55.6	2 000			58.8	2 200					36.6
		39.6	54.0	53.4	1 600			55.5	1 700					39.6
		42.7						52.0	1 400					42.7

MANITOWOC M-65W – Liftcrane jib capacities

(jib no. 130 with 3 658mm strut on boom no. 46)

19 050 KG COUNTERWEIGHT

6 807 MM CRAWLERS EXTENDED

360° RATING

12.2m (40 FT) JIB

BOOM LGTH. METERS	BOOM LGTH. FEET	JIB OPER. RAD. METERS	3 DEGREE OFFSET			15 DEGREE OFFSET			30 DEGREE OFFSET			JIB OPER. RAD. METERS
			BOOM ANG. DEG.	JIB POINT ELEV. METERS	CAPACITY KILOGRAMS	BOOM ANG. DEG.	JIB POINT ELEV. METERS	CAPACITY KILOGRAMS	BOOM ANG. DEG.	JIB POINT ELEV. METERS	CAPACITY KILOGRAMS	
21.3	70	9.1	78.2	34.7	6 800*	79.7	34.0	6 800*				9.1
		10.7	75.6	34.3	6 800*			6 800*				10.7
		12.2	72.9	33.8	6 800*	77.0	33.5	6 800*				12.2
		13.7	70.1	33.3	6 800*	74.2	32.9	6 800*	78.8	32.0	6 300*	13.7
		15.2	67.3	32.6	6 800*	71.4	32.3	6 800*	75.8	31.4	6 000*	15.2
		16.8	64.5	31.9	6 800*	68.5	31.5	6 800*	72.9	30.6	5 700*	16.8
		18.3	61.5	31.0	6 800*	65.5	30.7	6 800*	69.8	29.7	5 500*	18.3
		19.8	58.5	30.1	6 800*	62.4	29.7	6 800*	66.6	28.7	5 300*	19.8
		21.3	55.4	29.0	6 800*	59.3	28.7	6 800*	63.3	27.6	5 100*	21.3
		24.4	48.7	26.5	6 200	52.5	26.1	6 300	56.2	24.9	4 800*	24.4
		27.4	41.1	23.2	5 300	44.8	22.8	5 300	48.1	21.4	4 500*	27.4
		30.5	32.1	18.9	4 500	35.5	18.3	4 600				30.5
24.4	80	9.1	79.2	37.8	6 800*			6 800*				9.1
		10.7	76.8	37.5	6 800*	80.6	37.1	6 800*				10.7
		12.2	74.3	37.0	6 800*		36.7	6 800*				12.2
		13.7	71.8	36.5	6 800*	75.6	36.2	6 800*	79.8	35.2	6 100*	13.7
		15.2	69.3	35.9	6 800*	73.0	35.6	6 800*	77.2	34.6	6 000*	15.2
		16.8	66.7	35.3	6 800*	70.4	34.9	6 800*	74.5	33.9	5 800*	16.8
		18.3	64.1	34.5	6 800*	67.8	34.2	6 800*	71.7	33.2	5 700*	18.3
		19.8	61.4	33.7	6 800*	65.0	33.3	6 800*	68.9	32.3	5 400*	19.8
		21.3	58.6	32.7	6 800*	62.2	32.4	6 800*	66.0	31.3	5 300*	21.3
		24.4	52.8	30.5	6 100	56.3	30.1	6 200	59.9	29.0	4 900*	24.4
		27.4	46.4	27.8	5 100	49.8	27.3	5 200	53.1	26.1	4 700*	27.4
		30.5	39.3	24.3	4 300	42.5	23.8	4 400				30.5
27.4	90	9.1	80.0	41.0	6 800*			6 800*				9.1
		10.7	77.8	40.6	6 800*			6 800*				10.7
		12.2	75.6	40.2	6 800*	79.0	39.9	6 800*				12.2
		13.7	73.3	39.7	6 800*	76.7	39.4	6 800*	80.6	38.4	6 300*	13.7
		15.2	71.0	39.2	6 800*	74.4	38.8	6 800*	78.2	37.9	6 200*	15.2
		16.8	68.6	38.6	6 800*	72.0	38.2	6 800*	75.8	37.3	6 000*	16.8
		18.3	66.2	37.9	6 800*	69.6	37.5	6 800*	73.3	36.5	5 800*	18.3
		19.8	63.8	37.2	6 800*	67.2	36.8	6 800*	70.8	35.8	5 600*	19.8
		21.3	61.3	36.3	6 800*	64.6	35.9	6 800*	68.2	34.9	5 400*	21.3
		24.4	56.1	34.4	6 000	59.4	33.9	6 100	62.7	32.6	5 100*	24.4
		27.4	50.5	32.0	5 000	53.8	31.5	5 100	56.9	30.3	4 800*	27.4
		30.5	44.5	29.0	4 300	47.6	28.5	4 300	50.4	27.2	4 400	30.5
30.5	100	9.1	80.8	44.1	6 800*			6 800*				9.1
		10.7	78.7	43.7	6 800*			6 800*				10.7
		12.2	76.6	43.4	6 800*	79.9	43.0	6 800*				12.2
		13.7	74.5	42.9	6 800*	77.7	42.6	6 800*				13.7
		15.2	72.4	42.4	6 800*	75.6	42.1	6 800*	79.1	41.1	6 400*	15.2
		16.8	70.2	41.9	6 800*	73.4	41.5	6 800*	76.9	40.5	6 100*	16.8
		18.3	68.0	41.3	6 800*	71.2	40.9	6 800*	74.6	39.9	5 900*	18.3
		19.8	65.8	40.6	6 800*	68.9	40.2	6 800*	72.3	39.1	5 700*	19.8
		21.3	63.5	39.8	6 800*	66.6	39.4	6 800*	70.0	38.4	5 500*	21.3
		24.4	58.8	38.0	6 800*	61.9	37.6	6 000	65.1	36.5	5 200*	24.4
		27.4	53.9	35.9	5 900	56.9	35.8	5 000	59.9	34.3	5 000*	27.4
		30.5	48.6	33.3	4 100	51.5	32.8	4 300	54.3	31.6	4 300	30.5
33.5		42.7	30.2	25.3	3 500	45.6	29.7	3 600				33.5
		36.2	26.5	21.2	3 000	38.9	25.7	3 100	48.1	28.2	3 700	36.6
		39.6	28.2		2 600							39.6

MANITOWOC M-65W – Liftcrane jib capacities

(jib no. 130 with 3 658mm strut on boom no. 46)

19 050 KG COUNTERWEIGHT

6 807 MM CRAWLERS EXTENDED

360° RATING

12.2m (40 FT) JIB

BOOM LGTH. METERS	BOOM LGTH. FEET	JIB OPER. RAD. METERS	3 DEGREE OFFSET			15 DEGREE OFFSET			30 DEGREE OFFSET			JIB OPER. RAD. METERS
			BOOM ANG. DEG.	JIB POINT ELEV. METERS	CAPACITY KILOGRAMS	BOOM ANG. DEG.	JIB POINT ELEV. METERS	CAPACITY KILOGRAMS	BOOM ANG. DEG.	JIB POINT ELEV. METERS	CAPACITY KILOGRAMS	
335	110	10.7	79.4	46.9	6 800	80.5	46.2	6 800				10.7
		12.2	77.5	46.5	6 800			6 800				12.2
		13.7	75.5	46.1	6 800	78.6	45.7	6 800				13.7
		15.2	73.6	45.7	6 800	76.6	45.3	6 800	79.9	44.3	6 500	15.2
		16.8	71.6	45.1	6 800	74.6	44.8	6 800	77.8	43.7	6 300	16.8
		18.3	69.5	44.6	6 800	72.5	44.2	6 800	75.8	43.2	6 000	18.3
		19.8	67.5	43.9	6 800	70.4	43.5	6 800	73.6	42.5	5 800	19.8
		21.3	65.4	43.2	6 800	68.3	42.8	6 800	71.5	41.8	5 700	21.3
		24.4	61.1	41.6	5 700	64.0	41.2	5 900	67.0	40.1	5 300	24.4
		27.4	56.6	39.7	4 700	59.5	39.2	4 900	62.3	38.1	5 000	27.4
		30.5	51.9	37.4	4 000	54.7	36.9	4 100	57.4	35.6	4 300	30.5
		33.5	46.8	34.6	3 400	49.5	34.1	3 500	52.0	32.8	3 600	33.5
		36.6	41.2	31.3	2 900	43.8	30.8	3 000				36.6
		39.6	34.9	27.2	2 500	37.3	26.6	2 500				39.6
		42.7	27.2	21.9	2 100							42.7
366	120	10.7	80.1	50.0	6 800			6 800				10.7
		12.2	78.3	49.6	6 800			6 800				12.2
		13.7	76.5	49.3	6 800	79.3	48.9	6 800				13.7
		15.2	74.6	48.8	6 800	77.4	48.5	6 800	80.6	47.4	6 500	15.2
		16.8	72.8	48.4	6 800	75.6	48.0	6 800	78.7	47.0	6 300	16.8
		18.3	70.9	47.8	6 800	73.7	47.4	6 800	76.7	46.4	6 100	18.3
		19.8	69.0	47.2	6 800	71.7	46.8	6 800	74.8	45.8	5 900	19.8
		21.3	67.0	46.6	6 800	69.8	46.2	6 800	72.8	45.1	5 800	21.3
		24.4	63.1	45.1	5 600	65.8	44.7	5 800	68.7	43.6	5 500	24.4
		27.4	59.0	43.3	4 700	61.7	42.9	4 800	64.4	41.7	5 000	27.4
		30.5	54.7	41.2	3 900	57.3	40.8	4 000	59.9	39.5	4 200	30.5
		33.5	50.1	38.8	3 300	52.7	38.3	3 400	55.1	37.0	3 500	33.5
		36.6	45.2	35.9	2 800	47.7	35.3	2 900	50.0	33.9	2 900	36.6
		39.6	39.8	32.4	2 400	42.2	31.8	2 400				39.6
		42.7	33.7	28.1	2 000	36.0	27.5	2 100				42.7
		45.7	26.3	22.6	1 700							45.7
396	130	10.7	80.7	53.1	6 800			6 800				10.7
		12.2	79.0	52.8	6 800			6 800				12.2
		13.7	77.3	52.4	6 800	79.9	52.0	6 800				13.7
		15.2	75.5	52.0	6 800	78.2	51.6	6 800				15.2
		16.8	73.8	51.6	6 800	76.4	51.2	6 800	79.4	50.1	6 100	16.8
		18.3	72.0	51.1	6 800	74.7	50.7	6 800	77.6	49.6	6 100	18.3
		19.8	70.3	50.5	6 800	72.9	50.1	6 800	75.7	49.1	6 000	19.8
		21.3	68.5	49.9	6 800	71.1	49.5	6 800	73.9	48.4	5 900	21.3
		24.4	64.8	48.5	5 500	67.4	48.1	5 700	70.1	47.0	5 600	24.4
		27.4	61.0	46.9	4 500	63.5	46.4	4 700	66.1	45.3	4 900	27.4
		30.5	57.0	45.0	3 800	59.5	44.8	3 900	62.0	43.3	4 100	30.5
		33.5	52.9	42.7	3 200	55.3	42.3	3 300	57.7	41.0	3 400	33.5
		36.6	48.5	40.1	2 700	50.9	39.6	2 800	53.1	38.3	2 900	36.6
		39.6	43.8	37.1	2 300	46.1	36.5	2 400	48.1	35.0	2 400	39.6
		42.7	38.6	33.5	1 900	40.8	32.8	2 000				42.7
		45.7	32.6	29.0	1 600	34.7	28.3	1 600				45.7
		48.8	25.5	23.3	1 300							48.8
427	140	12.2	79.6	55.9	6 800	80.5	55.2	6 800				12.2
		13.7	78.0	55.6	6 800			6 800				13.7
		15.2	76.4	55.2	6 800	78.9	54.8	6 800				15.2
		16.8	74.7	54.8	6 800	77.2	54.4	6 800	80.0	53.3	5 800	16.8
		18.3	73.1	54.3	6 800	75.6	53.9	6 800	78.3	52.8	5 700	18.3
		19.8	71.4	53.8	6 800	73.9	53.4	6 800	76.6	52.3	5 600	19.8
		21.3	69.7	53.2	6 600	72.2	52.8	6 800	74.8	51.7	5 700	21.3
		24.4	66.3	51.9	5 300	68.7	51.5	5 600	71.3	50.4	5 600	24.4
		27.4	62.7	50.4	4 400	65.2	49.9	4 600	67.7	48.8	4 800	27.4
		30.5	59.1	48.6	3 700	61.5	48.1	3 800	63.9	47.0	4 000	30.5
		33.5	55.3	46.5	3 000	57.6	46.1	3 200	59.9	44.8	3 300	33.5
		36.6	51.3	44.2	2 500	53.6	43.7	2 700	55.7	42.4	2 800	36.6
		39.6	47.0	41.4	2 100	49.3	40.9	2 200	51.3	39.5	2 300	39.6
		42.7	42.4	38.2	1 800	44.6	37.7	1 900				42.7
		45.7	37.4	34.5	1 400	39.5	33.8	1 500				45.7

MANITOWOC M-65W – Liftcrane jib capacities

(jib no. 130 with 3 658mm strut on boom no. 46)

19 050 KG COUNTERWEIGHT

6 807 MM CRAWLERS EXTENDED

360° RATING

12.2m (40 FT) JIB

BOOM LGTH. METERS	BOOM LGTH. FEET	JIB OPER. RAD. METERS	3 DEGREE OFFSET			15 DEGREE OFFSET			30 DEGREE OFFSET			JIB OPER. RAD. METERS
			BOOM ANG. DEG.	JIB POINT ELEV. METERS	CAPACITY KILOGRAMS	BOOM ANG. DEG.	JIB POINT ELEV. METERS	CAPACITY KILOGRAMS	BOOM ANG. DEG.	JIB POINT ELEV. METERS	CAPACITY KILOGRAMS	
4 5 7	1 5 0	12.2	80.2	59.0	6 800*							12.2
		13.7	78.6	58.7	6 800*							13.7
		15.2	77.1	58.3	6 800*	79.5	57.9	6 800*				15.2
		16.8	75.5	57.9	6 800*	77.9	57.5	6 800*	80.6	56.5	5 600*	16.8
		18.3	74.0	57.5	6 800*	76.4	57.1	6 800*	79.0	56.0	5 500*	18.3
		19.8	72.4	57.0	6 800*	74.8	56.6	6 800*	77.3	55.5	5 500*	19.8
		21.3	70.8	56.4	6 500	73.2	56.0	6 800*	75.7	55.0	5 400*	21.3
		24.4	67.6	55.2	5 300	69.9	54.8	5 500	72.4	53.7	5 300*	24.4
		27.4	64.3	53.8	4 300	66.6	53.4	4 500	69.0	52.2	4 700	27.4
		30.5	60.9	52.2	3 600	63.1	51.7	3 700	65.5	50.5	3 900	30.5
		33.5	57.4	50.3	2 900	59.6	49.8	3 100	61.8	48.6	3 300	33.5
		36.6	53.7	48.1	2 400	55.9	47.6	2 600	58.0	46.3	2 700	36.6
		39.6	49.8	45.6	2 000	52.0	45.1	2 100	54.0	43.7	2 200	39.6
		42.7	45.7	42.7	1 700	47.8	42.2	1 800	49.6	40.7	1 900	42.7
		45.7	41.2	39.4	1 400	43.3	38.8	1 400				45.7
4 8 8	1 6 0	12.2	80.7	62.1	6 800*							12.2
		13.7	79.2	61.8	6 800*							13.7
		15.2	77.7	61.5	6 800*	80.0	61.1	6 800*				15.2
		16.8	76.3	61.1	6 800*	78.5	60.7	6 800*				16.8
		18.3	74.8	60.7	6 800*	77.1	60.3	6 800*	79.5	59.2	5 300*	18.3
		19.8	73.3	60.2	6 800*	75.6	59.8	6 700*	78.0	58.7	5 300*	19.8
		21.3	71.8	59.7	6 400	74.0	59.3	6 700*	76.5	58.2	5 200*	21.3
		24.4	68.8	58.5	5 200	71.0	58.1	5 400	73.3	57.0	5 100*	24.4
		27.4	65.7	57.2	4 200	67.8	56.8	4 400	70.1	55.6	4 600	27.4
		30.5	62.5	55.6	3 400	64.6	55.2	3 600	66.9	54.0	3 800	30.5
		33.5	59.2	53.9	2 900	61.3	53.4	3 000	63.5	52.2	3 200	33.5
		36.6	55.8	51.9	2 400	57.9	51.4	2 500	59.9	50.1	2 600	36.6
		39.6	52.2	49.6	1 900	54.3	49.1	2 000	56.2	47.7	2 100	39.6
		42.7	48.4	46.9	1 600	50.5	46.4	1 700	52.3	45.0	1 800	42.7
		45.7				46.4	43.4	1 400	48.1	41.9	1 400	45.7
5 1 8	1 7 0	13.7	79.7	64.9	6 400*	80.5	64.2	6 100*				13.7
		15.2	78.3	64.6	6 300*	79.1	63.8	6 000*				15.2
		16.8	76.9	64.2	6 300*	77.7	63.4	6 000*				16.8
		18.3	75.5	63.8	6 200*	76.3	63.0	5 900*	80.1	62.3	5 100*	18.3
		19.8	74.1	63.4	6 200*	75.0	62.6	5 900*	78.6	61.9	5 000*	19.8
		21.3	72.7	62.9	6 100*	74.8	62.5	5 900*	77.2	61.4	5 000*	21.3
		24.4	69.8	61.8	5 000	71.9	61.4	5 300	74.2	60.3	4 900*	24.4
		27.4	66.9	60.5	4 100	69.0	60.1	4 300	71.2	59.0	4 500	27.4
		30.5	63.9	59.1	3 300	66.0	58.6	3 500	68.1	57.5	3 700	30.5
		33.5	60.8	57.4	2 700	62.8	57.0	2 900	64.9	55.8	3 000	33.5
		36.6	57.6	55.5	2 200	59.6	55.1	2 400	61.6	53.8	2 500	36.6
		39.6	54.3	53.4	1 800	56.3	52.9	1 900	58.2	51.6	2 000	39.6
		42.7	50.8	51.0	1 400	52.8	50.5	1 500	54.6	49.1	1 600	42.7
		45.7							50.8	46.3	1 300	45.7
5 4 9	1 8 0	13.7	80.2	68.0	5 700*	80.9	67.3	5 400*				13.7
		15.2	78.9	67.7	5 600*	79.6	67.0	5 300*				15.2
		16.8	77.5	67.4	5 600*	78.3	66.6	5 300*				16.8
		18.3	76.2	67.0	5 500*	76.9	66.2	5 300*	80.5	65.5	4 800*	18.3
		19.8	74.9	66.6	5 400*	75.6	65.7	5 300*	79.2	65.0	4 800*	19.8
		21.3	73.5	66.1	5 300*	74.3	65.3	5 200*	77.8	64.6	4 700*	21.3
		24.4	70.8	65.1	4 900	72.8	64.6	5 100*	75.0	63.5	4 700*	24.4
		27.4	68.0	63.9	4 000	70.0	63.4	4 200	72.1	62.3	4 400	27.4
		30.5	65.2	62.5	3 200	67.1	62.1	3 400	69.2	60.9	3 600	30.5
		33.5	62.2	60.9	2 600	64.2	60.5	2 800	66.2	59.3	3 000	33.5
		36.6	59.3	59.2	2 100	61.2	58.7	2 300	63.1	57.4	2 400	36.6
		39.6	56.2	57.2	1 700	58.1	56.7	1 800	59.9	55.4	1 900	39.6
		42.7	52.9	54.9	1 300	54.8	54.4	1 400	56.6	53.1	1 600	42.7

MANITOWOC M-65W – Liftcrane jib capacities

(jib no. 130 with 3 658mm strut on boom no. 46)

19 050 KG COUNTERWEIGHT

6 807 MM CRAWLERS EXTENDED

360° RATING

15.2m (50 FT) JIB

BOOM LGTH. METERS	BOOM LGTH. FEET	JIB OPER. RAD. METERS	3 DEGREE OFFSET				15 DEGREE OFFSET				30 DEGREE OFFSET				JIB OPER. RAD. METERS
			BOOM ANG. DEG.	JIB POINT ELEV. METERS	CAPACITY KILOGRAMS		BOOM ANG. DEG.	JIB POINT ELEV. METERS	CAPACITY KILOGRAMS		BOOM ANG. DEG.	JIB POINT ELEV. METERS	CAPACITY KILOGRAMS		
21.3	70		9.1	79.4	37.8	6 800*									9.1
			10.7	77.0	37.5	6 800*									10.7
			12.2	74.5	37.0	6 800*	79.3	36.7	6 800*						12.2
			13.7	72.0	36.5	6 800*		36.2	6 800*						13.7
			15.2	69.5	35.9	6 800*	74.2	35.6	6 800*		79.5	34.6	5 500*		15.2
			16.8	66.9	35.3	6 800*		34.9	6 800*		76.9	33.9	5 300*		16.8
			18.3	64.3	34.5	6 800*	68.9	34.1	6 800*		74.1	33.1	5 000*		18.3
			19.8	61.6	33.7	6 800*		33.3	6 800*		71.3	32.2	4 800*		19.8
			21.3	58.8	32.7	6 800*	63.4	32.3	6 600*		68.4	31.2	4 600*		21.3
			24.4	53.0	30.5	6 300*	57.5	30.1	5 800*		62.2	28.9	4 300*		24.4
			27.4	46.6	27.8	5 300*	51.0	27.3	5 200*		55.4	25.9	3 900*		27.4
			30.5	39.5	24.3	4 500*	43.7	23.8	4 200*		47.6	22.2	3 700*		30.5
			33.5	30.9	19.7	3 900*	34.8	19.0	4 000*						33.5
24.4	80		9.1	80.2	41.0	6 800*									9.1
			10.7	78.0	40.6	6 800*									10.7
			12.2	75.7	40.2	6 800*	80.1	39.8	6 800*						12.2
			13.7	73.5	39.7	6 800*		39.4	6 800*						13.7
			15.2	71.1	39.2	6 800*	75.5	38.8	6 800*		80.4	37.8	4 900*		15.2
			16.8	68.8	38.6	6 800*		38.2	6 800*		78.0	37.1	4 800*		16.8
			18.3	66.4	37.9	6 800*	70.7	37.5	6 800*		75.5	36.4	4 700*		18.3
			19.8	64.0	37.2	6 800*		36.8	6 800*		72.9	35.6	4 600*		19.8
			21.3	61.5	36.3	6 800*	65.7	35.9	6 800*		70.3	34.8	4 500*		21.3
			24.4	56.3	34.4	6 100*	60.5	33.9	6 200*		64.9	32.7	4 300*		24.4
			27.4	50.7	32.0	5 200*	54.8	31.5	5 300*		59.0	30.2	4 100*		27.4
			30.5	44.7	29.0	4 400*	48.7	28.5	4 500*		52.5	27.0	3 900*		30.5
			33.5	37.8	25.3	3 800*	41.6	24.7	3 900*						33.5
			36.6	29.6	20.5	3 300*	33.1	19.7	3 400*						36.6
27.4	90		9.1	80.9	44.1	6 800*									9.1
			10.7	78.9	43.7	6 800*									10.7
			12.2	76.8	43.4	6 800*	80.9	43.0	6 800*						12.2
			13.7	74.7	42.9	6 800*		42.6	6 800*						13.7
			15.2	72.5	42.4	6 800*	76.6	42.1	6 800*						15.2
			16.8	70.4	41.9	6 800*		41.5	6 800*		78.9	40.4	5 000*		16.8
			18.3	68.2	41.3	6 800*	72.2	40.9	6 800*		76.6	39.7	4 900*		18.3
			19.8	66.0	40.6	6 800*		40.2	6 800*		74.3	39.0	4 800*		19.8
			21.3	63.7	39.8	6 800*	67.6	39.4	6 800*		72.0	38.2	4 700*		21.3
			24.4	59.0	38.0	6 000*	62.9	37.6	6 200*		67.1	36.4	4 600*		24.4
			27.4	54.0	35.9	5 000*	57.9	35.4	5 200*		61.8	34.1	4 300*		27.4
			30.5	48.7	33.3	4 300*	52.5	32.8	4 400*		56.2	31.4	4 000*		30.5
			33.5	42.9	30.2	3 700*	46.6	29.6	3 800*		50.0	28.0	3 800*		33.5
			36.6	36.3	26.3	3 200*	39.8	25.6	3 300*						36.6
			39.6	28.4	21.2	2 800*	31.6	20.4	2 800*						39.6
30.5	100		10.7	79.6	46.9	6 800*									10.7
			12.2	77.7	46.5	6 800*									12.2
			13.7	75.7	46.1	6 800*	79.5	45.7	6 800*						13.7
			15.2	73.7	45.7	6 800*		45.3	6 800*						15.2
			16.8	71.7	45.1	6 800*	75.5	44.7	6 800*		79.7	43.6	5 300*		16.8
			18.3	69.7	44.6	6 800*		44.1	6 800*		77.6	43.0	5 200*		18.3
			19.8	67.7	43.9	6 800*	71.4	43.5	6 800*		75.5	42.3	5 100*		19.8
			21.3	65.6	43.2	6 800*		42.8	6 800*		73.3	41.6	5 000*		21.3
			24.4	61.3	41.6	5 900*	64.9	41.2	6 100*		68.9	39.9	4 700*		24.4
			27.4	56.8	39.7	4 900*	60.4	39.2	5 100*		64.2	37.9	4 400*		27.4
			30.5	52.0	37.4	4 200*	55.6	36.9	4 300*		59.2	35.5	4 100*		30.5
			33.5	47.0	34.6	3 600*	50.4	34.1	3 700*		53.8	32.6	3 800*		33.5
			36.6	41.4	31.3	3 100*	44.7	30.7	3 200*		47.8	29.0	3 300*		36.6
			39.6	35.0	27.2	2 700*									39.6
			42.7	27.4	21.9	2 300*	38.2	26.5	2 700*						42.7

MANITOWOC M-65W – Liftcrane jib capacities

(jib no. 130 with 3 658mm strut on boom no. 46)

19 050 KG COUNTERWEIGHT

6 807 MM CRAWLERS EXTENDED

360° RATING

15.2m (50 FT) JIB

BOOM LGTH. METERS	BOOM LGTH. FEET	JIB OPER. RAD. METERS	3 DEGREE OFFSET			15 DEGREE OFFSET			30 DEGREE OFFSET			JIB OPER. RAD. METERS
			BOOM ANG. DEG.	JIB POINT ELEV. METERS	CAPACITY KILOGRAMS	BOOM ANG. DEG.	JIB POINT ELEV. METERS	CAPACITY KILOGRAMS	BOOM ANG. DEG.	JIB POINT ELEV. METERS	CAPACITY KILOGRAMS	
335	110	10.7	80.3	50.0	6 800*							10.7
		12.2	78.4	49.7	6 800*							12.2
		13.7	76.6	49.3	6 800*	80.2	48.9	6 800*				13.7
		15.2	74.8	48.8	6 800*	78.3	48.4	6 800*				15.2
		16.8	72.9	48.4	6 800*	76.5	47.9	6 800*	80.4	46.8	5 400*	16.8
		18.3	71.0	47.8	6 800*	74.6	47.4	6 800*	78.5	46.2	5 400*	18.3
		19.8	69.1	47.2	6 800*	72.6	46.8	6 800*	76.5	45.6	5 300*	19.8
		21.3	67.2	46.6	6 800*	70.7	46.1	6 800*	74.5	44.9	5 100*	21.3
		24.4	63.2	45.1	5 800	66.7	44.6	6 000	70.4	43.4	4 800*	24.4
		27.4	59.1	43.3	4 800	62.5	42.8	5 000	66.1	41.5	4 500*	27.4
		30.5	54.8	41.2	4 000	58.2	40.7	4 200	61.6	39.3	4 300*	30.5
		33.5	50.3	38.8	3 400	53.5	38.2	3 600	56.8	36.8	3 700	33.5
		36.6	45.4	35.9	2 900	48.6	35.3	3 000	51.6	33.7	3 100	36.6
		39.6	40.0	32.4	2 500	43.1	31.8	2 600				39.6
		42.7	33.9	28.1	2 200	36.8	27.4	2 200				42.7
		45.7	26.5	22.6	1 900							45.7
366	120	10.7	80.8	53.1	6 800*							10.7
		12.2	79.1	52.8	6 800*							12.2
		13.7	77.4	52.4	6 800*	80.8	52.0	6 800*				13.7
		15.2	75.7	52.0	6 800*	79.0	51.6	6 800*				15.2
		16.8	73.9	51.6	6 800*	77.3	51.1	6 800*				16.8
		18.3	72.2	51.1	6 800*	75.5	50.6	6 800*	79.2	49.4	5 300*	18.3
		19.8	70.4	50.5	6 800*	73.7	50.1	6 800*	77.4	48.9	5 200*	19.8
		21.3	68.6	49.9	6 800*	71.9	49.5	6 800*	75.5	48.2	5 200*	21.3
		24.4	64.9	48.5	5 700	68.2	48.1	5 900	71.7	46.8	4 900*	24.4
		27.4	61.1	46.9	4 700	64.3	46.4	4 900	67.7	45.1	4 600*	27.4
		30.5	57.2	45.0	3 900	60.3	44.5	4 100	63.6	43.1	4 300	30.5
		33.5	53.0	42.7	3 400	56.2	42.2	3 500	59.3	40.8	3 600	33.5
		36.6	48.6	40.1	2 800	51.7	39.6	2 900	54.6	38.0	3 100	36.6
		39.6	43.9	37.1	2 400	46.9	36.5	2 500	49.6	34.8	2 600	39.6
		42.7	38.7	33.5	2 000	41.6	32.8	2 100				42.7
		45.7	32.8	29.0	1 800	35.5	28.2	1 800				45.7
		48.8	25.6	23.3	1 500							48.8
396	130	12.2	79.7	55.9	6 800*							12.2
		13.7	78.1	55.6	6 800*							13.7
		15.2	76.5	55.2	6 800*	79.7	54.7	6 800*				15.2
		16.8	74.9	54.8	6 800*	78.0	54.3	6 800*				16.8
		18.3	73.2	54.3	6 800*	76.3	53.8	6 800*	79.8	52.6	5 000*	18.3
		19.8	71.5	53.8	6 800*	74.7	53.3	6 800*	78.1	52.1	4 900*	19.8
		21.3	69.8	53.2	6 800*	73.0	52.7	6 800*	76.4	51.5	4 900*	21.3
		24.4	66.4	51.9	5 500	69.5	51.4	5 800	72.8	50.2	4 800*	24.4
		27.4	62.9	50.4	4 600	65.9	49.9	4 800	69.2	48.6	4 800*	27.4
		30.5	59.2	48.9	3 800	62.2	48.1	4 000	65.4	46.7	4 200	30.5
		33.5	55.4	46.5	3 200	58.4	46.0	3 400	61.4	44.6	3 500	33.5
		36.6	51.4	44.2	2 700	54.3	43.6	2 900	57.2	42.1	3 000	36.6
		39.6	47.2	41.4	2 300	50.0	40.9	2 400	52.7	39.2	2 500	39.6
		42.7	42.6	38.3	1 900	45.4	37.6	2 000	47.8	35.8	2 100	42.7
		45.7	37.5	34.5	1 600	40.2	33.8	1 700				45.7
		48.8	31.8	29.9	1 400	34.4	29.0	1 400				48.8
427	140	12.2	80.3	59.0	6 800*							12.2
		13.7	78.8	58.7	6 800*							13.7
		15.2	77.2	58.3	6 800*	80.2	57.9	6 800*				15.2
		16.8	75.7	57.9	6 800*	78.7	57.5	6 800*				16.8
		18.3	74.1	57.5	6 800*	77.1	57.0	6 800*	80.4	55.8	4 800*	18.3
		19.8	72.5	57.0	6 800*	75.5	56.5	6 800*	78.8	55.3	4 700*	19.8
		21.3	70.9	56.5	6 700	73.9	56.0	6 800*	77.2	54.7	4 700*	21.3
		24.4	67.7	55.2	5 400	70.7	54.8	5 700	73.8	53.5	4 600*	24.4
		27.4	64.4	53.8	4 400	67.3	53.3	4 700	70.4	52.0	4 500*	27.4
		30.5	61.0	52.2	3 700	63.9	51.7	3 900	66.9	50.3	4 100	30.5
		33.5	57.5	50.3	3 100	60.3	49.7	3 300	63.2	48.3	3 400	33.5
		36.6	53.8	48.1	2 600	56.6	47.5	2 700	59.4	46.1	2 900	36.6
		39.6	49.9	45.6	2 200	52.7	45.0	2 300	55.3	43.4	2 400	39.6
		42.7	45.8	42.7	1 800	48.5	42.1	1 900	51.0	40.4	2 000	42.7
		45.7	41.4	39.4	1 500	44.0	38.7	1 600	46.2	36.9	1 700	45.7
		48.8				39.0	34.7	1 300				48.8

MANITOWOC M-65W – Liftcrane jib capacities

(jib no. 130 with 3 658mm strut on boom no. 46)

19 050 KG COUNTERWEIGHT

6 807 MM CRAWLERS EXTENDED

360° RATING

15.2m (50 FT) JIB

BOOM LGTH. METERS	BOOM LGTH. FEET	JIB OPER. RAD. METERS	3 DEGREE OFFSET			15 DEGREE OFFSET			30 DEGREE OFFSET			JIB OPER. RAD. METERS
			BOOM ANG. DEG.	JIB POINT ELEV. METERS	CAPACITY KILOGRAMS	BOOM ANG. DEG.	JIB POINT ELEV. METERS	CAPACITY KILOGRAMS	BOOM ANG. DEG.	JIB POINT ELEV. METERS	CAPACITY KILOGRAMS	
45.7	15.0	12.2	80.8	62.1	6 800*							12.2
		13.7	79.3	61.8	6 800*							13.7
		15.2	77.9	61.5	6 800*	80.7	61.0	6 500*				15.2
		16.8	76.4	61.1	6 800*	79.2	60.6	6 500*				16.8
		18.3	74.9	60.7	6 800*	77.8	60.2	6 500*	80.9	59.0	4 600*	18.3
		19.8	73.4	60.2	6 800*	76.3	59.7	6 500*	79.4	58.5	4 500*	19.8
		21.3	71.9	59.7	6 600	74.8	59.2	6 500*	77.9	58.0	4 500*	21.3
		24.4	68.9	58.5	5 300	71.7	58.1	5 600	74.7	56.8	4 400*	24.4
		27.4	65.8	57.2	4 300	68.5	56.7	4 600	71.5	55.4	4 300*	27.4
		30.5	62.6	55.6	3 600	65.3	55.2	3 800	68.2	53.8	4 000	30.5
		33.5	59.3	53.9	3 000	62.0	53.4	3 200	64.8	52.0	3 400	33.5
		36.6	55.9	51.9	2 500	58.6	51.3	2 600	61.2	49.9	2 800	36.6
		39.6	52.3	49.6	2 100	54.9	49.0	2 200	57.5	47.5	2 400	39.6
		42.7	48.6	46.9	1 700	51.2	46.4	1 800	53.6	44.7	1 900	42.7
		45.7	44.6	44.0	1 400	47.1	43.3	1 500	49.4	41.6	1 600	45.7
48.8	16.0	13.7	79.8	64.9	6 300*							13.7
		15.2	78.4	64.6	6 200*							15.2
		16.8	77.1	64.2	6 200*	79.8	63.8	5 900*				16.8
		18.3	75.7	63.8	6 100*	78.4	63.4	5 800*				18.3
		19.8	74.2	63.4	6 100*	76.9	62.9	5 800*	79.9	61.7	4 300*	19.8
		21.3	72.8	62.9	6 000*	75.5	62.4	5 800*	78.5	61.2	4 300*	21.3
		24.4	69.9	61.8	5 200	72.6	61.3	5 500	75.5	60.0	4 300*	24.4
		27.4	67.0	60.5	4 300	69.6	60.1	4 500	72.5	58.7	4 200*	27.4
		30.5	64.0	59.1	3 500	66.6	58.6	3 700	69.4	57.2	3 900	30.5
		33.5	60.9	57.4	2 900	63.5	56.9	3 100	66.2	55.9	3 300	33.5
		36.6	57.7	55.5	2 400	60.3	55.0	2 500	62.9	53.6	2 700	36.6
		39.6	54.4	53.4	1 900	56.9	52.9	2 100	59.4	51.3	2 300	39.6
		42.7	51.0	51.0	1 600	53.4	50.4	1 700	55.8	48.8	1 900	42.7
		45.7				49.7	47.7	1 400	52.0	46.0	1 500	45.7
51.8	17.0	13.7	80.3	68.0	5 600*							13.7
		15.2	79.0	67.7	5 600*							15.2
		16.8	77.7	67.4	5 500*	80.3	66.9	5 300*				16.8
		18.3	76.3	67.0	5 500*	78.9	66.5	5 300*				18.3
		19.8	75.0	66.6	5 400*	77.6	66.1	5 200*	80.4	64.8	4 200*	19.8
		21.3	73.6	66.1	5 400*	76.2	65.6	5 200*	79.0	64.4	4 200*	21.3
		24.4	70.9	65.1	5 100	73.4	64.6	5 100*	76.2	63.3	4 100*	24.4
		27.4	68.1	63.9	4 100	70.6	63.4	4 400	73.4	62.1	4 000*	27.4
		30.5	65.3	62.5	3 400	67.8	62.0	3 600	70.4	60.6	3 900	30.5
		33.5	62.4	60.9	2 800	64.8	60.4	2 900	67.4	59.0	3 200	33.5
		36.6	59.4	59.2	2 300	61.8	58.6	2 400	64.3	57.2	2 600	36.6
		39.6	56.3	57.2	1 800	58.7	56.6	2 000	61.1	55.1	2 100	39.6
		42.7	53.1	54.9	1 400	55.4	54.4	1 600	57.8	52.8	1 800	42.7
		45.7							54.3	50.2	1 400	45.7
54.9	18.0	13.7	80.7	71.1	5 000*							13.7
		15.2	79.5	70.8	5 000*							15.2
		16.8	78.2	70.5	4 900*	80.7	70.0	4 700*				16.8
		18.3	76.9	70.1	4 900*	79.4	69.7	4 700*				18.3
		19.8	75.6	69.7	4 800*	78.1	69.3	4 700*	80.9	68.0	4 000*	19.8
		21.3	74.4	69.3	4 800*	76.8	68.8	4 600*	79.5	67.5	4 000*	21.3
		24.4	71.8	68.3	4 700*	74.2	67.8	4 600*	76.9	66.5	3 900*	24.4
		27.4	69.1	67.2	4 000	71.5	66.7	4 300	74.1	65.3	3 900*	27.4
		30.5	66.4	65.9	3 300	68.8	65.4	3 500	71.4	64.0	3 800	30.5
		33.5	63.7	64.4	2 600	66.0	63.9	2 900	68.5	62.5	3 100	33.5
		36.6	60.8	62.7	2 100	63.2	62.2	2 400	65.6	60.7	2 500	36.6
		39.6	57.9	60.8	1 700	60.3	60.3	1 900	62.6	58.8	2 100	39.6
		42.7	54.9	58.7	1 400	57.2	58.2	1 500	59.5	56.6	1 700	42.7
		45.7							56.2	54.2	1 300	45.7

MANITOWOC M-65W – Liftcrane jib capacities

(jib no. 130 with 3 658mm strut on boom no. 46)

19 050 KG COUNTERWEIGHT

6 807 MM CRAWLERS EXTENDED

360° RATING

18.3m (60 FT) JIB

BOOM LGTH. METERS	BOOM LGTH. FEET	JIB OPER. RAD. METERS	3 DEGREE OFFSET			15 DEGREE OFFSET			30 DEGREE OFFSET			JIB OPER. RAD. METERS
			BOOM ANG. DEG.	JIB POINT ELEV. METERS	CAPACITY KILOGRAMS	BOOM ANG. DEG.	JIB POINT ELEV. METERS	CAPACITY KILOGRAMS	BOOM ANG. DEG.	JIB POINT ELEV. METERS	CAPACITY KILOGRAMS	
21.3	70	9.1	80.1	41.0	6 800*							9.1
		10.7	77.9	40.6	6 800*							10.7
		12.2	75.6	40.2	6 800*	81.0	39.9	6 800*				12.2
		13.7	73.3	39.8	6 800*	78.6	39.4	6 800*				13.7
		15.2	71.0	39.2	6 800*	76.3	38.9	6 700*				15.2
		16.8	68.7	38.6	6 700*	73.9	38.2	6 500*	80.0	37.2	4 800*	16.8
		18.3	66.3	37.9	6 500*	71.5	37.6	6 400*	77.5	36.5	4 500*	18.3
		19.8	63.9	37.2	6 300*	69.1	36.8	6 200*	74.9	35.7	4 300*	19.8
		21.3	61.4	36.3	6 100*	66.5	35.9	5 800*	72.3	34.8	4 000*	21.3
		24.4	56.2	34.4	5 800*	61.3	34.0	5 100*	66.9	32.7	3 700*	24.4
		27.4	50.6	32.0	5 300*	55.7	31.5	4 500*	61.0	30.2	3 400*	27.4
		30.5	44.6	29.0	4 600*	49.5	28.5	4 100*	54.5	27.0	3 100*	30.5
		33.5	37.7	25.3	3 900*	42.5	24.8	3 800*	47.0	23.0	2 900*	33.5
		36.6	29.5	20.5	3 500*	34.0	19.7	3 500*				36.6
24.4	80	9.1	80.8	44.1	6 800*							9.1
		10.7	78.7	43.8	6 800*							10.7
		12.2	76.7	43.4	6 800*							12.2
		13.7	74.6	43.0	6 800*	79.5	42.6	6 800*				13.7
		15.2	72.4	42.5	6 800*	77.3	42.1	6 700*				15.2
		16.8	70.3	41.9	6 700*	75.2	41.5	6 500*	80.7	40.4	4 100*	16.8
		18.3	68.1	41.3	6 500*	73.0	40.9	6 400*	78.5	39.7	4 000*	18.3
		19.8	65.8	40.6	6 300*	70.7	40.2	6 300*	76.1	39.0	3 900*	19.8
		21.3	63.6	39.8	6 200*	68.4	39.4	6 100*	73.8	38.2	3 800*	21.3
		24.4	58.9	38.0	5 900*	63.7	37.6	5 400*	68.9	36.4	3 700*	24.4
		27.4	53.9	35.9	5 200*	58.6	35.5	4 800*	63.7	34.1	3 500*	27.4
		30.5	48.6	33.3	4 400*	53.3	32.8	4 300*	58.0	31.4	3 300*	30.5
		33.5	42.8	30.2	3 800*	47.4	29.7	3 900*	51.8	28.0	3 000*	33.5
		36.6	36.3	26.3	3 300*	40.6	25.7	3 400*				36.6
		39.6	28.3	21.2	2 900*	32.5	20.4	2 900*				39.6
27.4	90	10.7	79.5	46.9	6 800*							10.7
		12.2	77.6	46.5	6 800*							12.2
		13.7	75.6	46.1	6 800*							13.7
		15.2	73.6	45.7	6 800*	80.2	45.7	6 800*				15.2
		16.8	71.6	45.2	6 700*	78.2	45.3	6 700*				16.8
		18.3	69.6	44.6	6 500*	76.2	44.8	6 500*				18.3
		19.8	67.6	43.9	6 400*	74.2	44.2	6 400*	79.3	43.0	4 200*	19.8
		21.3	65.5	43.2	6 300*	72.1	43.5	6 300*	77.2	42.3	4 100*	21.3
		24.4	61.2	41.6	6 000*	70.0	42.8	6 200*	75.0	41.6	4 000*	24.4
		27.4	56.7	39.7	5 100*	65.6	41.2	5 600*	70.5	39.9	3 900*	27.4
		30.5	52.0	37.4	4 300*	61.1	39.2	5 100*	65.8	37.9	3 600*	30.5
		33.5	46.9	34.6	3 700*	56.3	36.9	4 400*	60.8	35.4	3 400*	33.5
		36.6	41.3	31.3	3 200*	51.1	34.1	3 900*	55.4	32.5	3 200*	36.6
		39.6	34.9	27.3	2 800*	45.5	30.7	3 300*	49.4	29.0	3 000*	39.6
		42.7	27.3	21.9	2 400*	39.0	26.6	2 900*				42.7
						31.1	21.1	2 500*				
30.5	100	10.7	80.2	50.0	6 800*							10.7
		12.2	78.5	49.7	6 800*							12.2
		13.7	76.5	49.3	6 800*							13.7
		15.2	74.7	48.9	6 800*	80.8	48.9	6 700*				15.2
		16.8	72.8	48.4	6 700*	79.0	48.4	6 600*				16.8
		18.3	70.9	47.8	6 500*	77.1	48.0	6 500*				18.3
		19.8	69.0	47.2	6 400*	75.2	47.4	6 400*	80.0	46.2	4 400*	19.8
		21.3	67.1	46.6	6 300*	73.3	46.8	6 300*	78.1	45.6	4 300*	21.3
		24.4	63.1	45.1	5 900*	71.3	46.2	6 200*	76.1	44.9	4 300*	24.4
		27.4	59.0	43.3	4 900*	67.3	44.7	5 900*	71.9	43.3	4 000*	27.4
		30.5	54.7	41.2	4 200*	63.2	42.9	5 100*	67.7	41.5	3 700*	30.5
		33.5	50.2	38.8	3 600*	58.8	40.7	4 300*	63.1	39.3	3 500*	33.5
		36.6	45.3	35.9	3 100*	54.2	38.3	3 700*	58.3	36.7	3 300*	36.6
		39.6	39.9	32.4	2 700*	49.2	35.3	3 200*	53.1	33.6	3 100*	39.6
		42.7	33.8	28.2	2 300*	43.8	31.8	2 800*	47.3	29.9	2 900*	42.7
		45.7	26.4	22.6	2 000*	37.5	27.4	2 400*				45.7

MANITOWOC M-65W – Liftcrane jib capacities

(jib no. 130 with 3 658mm strut on boom no. 46)

19 050 KG COUNTERWEIGHT

6 807 MM CRAWLERS EXTENDED

360° RATING

18.3m (60 FT) JIB

BOOM LGTH. METERS	BOOM LGTH. FEET	JIB OPER. RAD. METERS	3 DEGREE OFFSET				15 DEGREE OFFSET				30 DEGREE OFFSET				JIB OPER. RAD. METERS
			BOOM ANG. DEG.	JIB POINT ELEV. METERS	CAPACITY KILOGRAMS	BOOM ANG. DEG.	JIB POINT ELEV. METERS	CAPACITY KILOGRAMS	BOOM ANG. DEG.	JIB POINT ELEV. METERS	CAPACITY KILOGRAMS	BOOM ANG. DEG.	JIB POINT ELEV. METERS	CAPACITY KILOGRAMS	
3 3 5	1 1 0		10.7	80.7	53.1	6 800*									10.7
			12.2	79.0	52.8	6 800*									12.2
			13.7	77.3	52.4	6 800*									13.7
			15.2	75.6	52.0	6 800*	79.7	51.6	6 500*						15.2
			16.8	73.9	51.6	6 600*	77.9	51.2	6 400*						16.8
			18.3	72.1	51.1	6 500*	76.1	50.6	6 300*	80.7	49.4	4 600*			18.3
			19.8	70.3	50.5	6 300*	74.3	50.1	6 300*	78.8	48.8	4 500*			19.8
			21.3	68.5	49.9	6 300*	72.5	49.5	6 200*	77.0	48.2	4 400*			21.3
			24.4	64.8	48.5	5 800	68.8	48.1	6 000	73.2	46.7	4 100*			24.4
			27.4	61.0	46.9	4 800	65.0	46.4	5 000	69.2	45.0	3 800*			27.4
			30.5	57.1	45.0	4 100	61.0	44.5	4 300	65.1	43.0	3 600*			30.5
			33.5	52.9	42.7	3 400	56.8	42.2	3 600	60.7	40.7	3 400*			33.5
			36.6	48.6	40.1	2 900	52.3	39.6	3 100	56.1	37.9	3 200*			36.6
			39.6	43.8	37.1	2 500	47.5	36.5	2 700	51.0	34.7	2 800			39.6
			42.7	38.6	33.5	2 200	42.2	32.8	2 300	45.4	30.8	2 400			42.7
			45.7	32.7	29.0	1 900	36.2	28.2	1 900						45.7
			48.8	25.6	23.3	1 600									48.8
3 6 6	1 2 0		12.2	79.7	55.9	6 800*									12.2
			13.7	78.0	55.6	6 800*									13.7
			15.2	76.4	55.2	6 700*	80.2	54.8	6 400*						15.2
			16.8	74.8	54.8	6 700*	78.6	54.3	6 400*						16.8
			18.3	73.1	54.3	6 400*	76.9	53.9	6 300*						18.3
			19.8	71.4	53.8	6 300*	75.2	53.3	6 200*	79.5	52.0	4 400*			19.8
			21.3	69.8	53.2	6 200*	73.5	52.8	6 100*	77.8	51.4	4 400*			21.3
			24.4	66.3	51.9	5 700	70.1	51.4	5 900	74.2	50.1	4 200*			24.4
			27.4	62.8	50.4	4 700	66.5	49.9	4 900	70.5	48.5	3 900*			27.4
			30.5	59.1	48.6	3 900	62.8	48.1	4 200	66.7	46.7	3 700*			30.5
			33.5	55.3	46.6	3 400	59.0	46.0	3 500	62.7	44.5	3 400*			33.5
			36.6	51.3	44.2	2 900	54.9	43.7	3 000	58.5	42.0	3 100			36.6
			39.6	47.1	41.5	2 400	50.6	40.9	2 500	54.1	39.1	2 700			39.6
			42.7	42.5	38.3	2 100	46.0	37.6	2 200	49.2	35.7	2 300			42.7
			45.7	37.5	34.5	1 800	40.8	33.8	1 900						45.7
			48.8	31.7	29.9	1 500	34.9	29.0	1 600						48.8
3 9 6	1 3 0		12.2	80.2	59.0	6 800*									12.2
			13.7	78.7	58.7	6 700*									13.7
			15.2	77.1	58.3	6 700*	80.8	57.9	6 300*						15.2
			16.8	75.6	57.9	6 500*	79.2	57.5	6 300*						16.8
			18.3	74.0	57.5	6 300*	77.6	57.0	6 200*						18.3
			19.8	72.5	57.0	6 300*	76.1	56.5	6 100*	80.1	55.2	4 200*			19.8
			21.3	70.9	56.5	6 100*	74.5	56.0	6 100*	78.5	54.7	4 200*			21.3
			24.4	67.6	55.2	5 500	71.2	54.8	5 800	75.1	53.4	4 100*			24.4
			27.4	64.3	53.8	4 600	67.9	53.3	4 800	71.7	51.9	4 000*			27.4
			30.5	60.9	52.4	3 900	64.4	51.7	4 000	68.2	50.2	3 800*			30.5
			33.5	57.4	50.3	3 200	60.9	49.8	3 400	64.5	48.2	3 500*			33.5
			36.6	53.7	48.1	2 700	57.1	47.6	2 900	60.6	46.0	3 100			36.6
			39.6	49.9	45.6	2 300	53.2	45.0	2 400	56.6	43.3	2 600			39.6
			42.7	45.7	42.7	1 900	49.1	42.1	2 100	52.2	40.3	2 200			42.7
			45.7	41.3	39.4	1 700	44.5	38.7	1 800	47.5	36.7	1 900			45.7
			48.8	36.4	35.5	1 400	39.6	34.7	1 400						48.8
4 2 7	1 4 0		12.2	80.7	62.1	6 300*									12.2
			13.7	79.2	61.8	6 300*									13.7
			15.2	77.8	61.5	6 200*									15.2
			16.8	76.3	61.1	6 200*	79.8	60.6	6 000*						16.8
			18.3	74.8	60.7	6 100*	78.3	60.2	6 000*						18.3
			19.8	73.4	60.2	6 100*	76.8	59.7	6 000*	80.6	58.4	4 000*			19.8
			21.3	71.9	59.7	6 000*	75.3	59.2	6 000*	79.1	57.9	4 000*			21.3
			24.4	68.8	58.5	5 400	72.2	58.1	5 800	75.9	56.7	3 900*			24.4
			27.4	65.7	57.2	4 400	69.1	56.7	4 700	72.7	55.3	3 900*			27.4
			30.5	62.5	55.7	3 700	65.8	55.2	3 900	69.4	53.7	3 800*			30.5
			33.5	59.2	53.9	3 100	62.5	53.4	3 300	66.0	51.9	3 500			33.5
			36.6	55.8	51.9	2 600	59.1	51.3	2 800	62.4	49.8	3 000			36.6
			39.6	52.2	49.6	2 200	55.5	49.0	2 400	58.7	47.3	2 500			39.6
			42.7	48.5	47.0	1 800	51.7	46.4	1 900	54.8	44.6	2 100			42.7
			45.7	44.5	44.0	1 500	47.6	43.3	1 600	50.5	41.4	1 800			45.7
			48.8				43.2	39.8	1 400	45.9	37.7	1 400			48.8

MANITOWOC M-65W – Liftcrane jib capacities

(jib no. 130 with 3 658mm strut on boom no. 46)

19 050 KG COUNTERWEIGHT

6 807 MM CRAWLERS EXTENDED

360° RATING

18.3m (60 FT) JIB

BOOM LGTH. METERS	BOOM LGTH. FEET	JIB OPER. RAD. METERS	3 DEGREE OFFSET			15 DEGREE OFFSET			30 DEGREE OFFSET			JIB OPER. RAD. METERS
			BOOM ANG. DEG.	JIB POINT ELEV. METERS	CAPACITY KILOGRAMS	BOOM ANG. DEG.	JIB POINT ELEV. METERS	CAPACITY KILOGRAMS	BOOM ANG. DEG.	JIB POINT ELEV. METERS	CAPACITY KILOGRAMS	
4 5 7	1 5 0	13.7	79.8	64.9	5 800*							13.7
		15.2	78.4	64.6	5 700*							15.2
		16.8	77.0	64.2	5 700*	80.3	63.8	5 500*				16.8
		18.3	75.6	63.8	5 700*	78.9	63.4	5 500*				18.3
		19.8	74.2	63.4	5 600*	77.4	62.9	5 500*				19.8
		21.3	72.7	62.9	5 600*	76.0	62.4	5 400*	79.6	61.1	3 800*	21.3
		24.4	69.9	61.8	5 300*	73.1	61.3	5 400*	76.7	59.9	3 800*	24.4
		27.4	66.9	60.6	4 300*	70.1	60.1	4 700*	73.6	58.6	3 700*	27.4
		30.5	63.9	59.1	3 600*	67.1	58.6	3 900*	70.5	57.1	3 600*	30.5
		33.5	60.8	57.4	3 000*	64.0	56.9	3 200*	67.3	55.4	3 400*	33.5
4 8 8	1 6 0	36.6	57.7	55.6	2 500*	60.8	55.0	2 700*	64.0	53.4	2 900*	36.6
		39.6	54.3	53.4	2 100*	57.4	52.9	2 300*	60.6	51.2	2 400*	39.6
		42.7	50.9	51.0	1 700*	53.9	50.4	1 900*	56.9	48.7	2 000*	42.7
		45.7	47.2	48.3	1 400*	50.2	47.7	1 500*	53.1	45.8	1 700*	45.7
		48.8							49.0	42.5	1 400*	48.8
		13.7	80.2	68.0	5 300*							13.7
		15.2	78.9	67.7	5 300*							15.2
		16.8	77.6	67.4	5 200*	80.7	66.9	5 000*				16.8
		18.3	76.2	67.0	5 200*	79.4	66.5	5 000*				18.3
		19.8	74.9	66.6	5 100*	78.0	66.1	5 000*				19.8
5 1 8	1 7 0	21.3	73.6	66.1	5 100*	76.7	65.6	5 000*	80.1	64.2	3 700*	21.3
		24.4	70.8	65.1	5 000*	73.9	64.6	4 900*	77.3	63.2	3 600*	24.4
		27.4	68.0	63.9	4 300*	71.1	63.4	4 600*	74.5	61.9	3 500*	27.4
		30.5	65.2	62.5	3 500*	68.2	62.0	3 800*	71.5	60.5	3 500*	30.5
		33.5	62.3	60.9	2 900*	65.3	60.4	3 100*	68.5	58.9	3 400*	33.5
		36.6	59.3	59.2	2 400*	62.3	58.6	2 600*	65.4	57.1	2 800*	36.6
		39.6	56.2	57.2	1 900*	59.2	56.6	2 100*	62.2	55.0	2 400*	39.6
		42.7	53.0	54.9	1 600*	55.9	54.4	1 800*	58.8	52.7	1 900*	42.7
		45.7	49.6	52.4	1 300*	52.5	51.8	1 400*	55.3	50.0	1 600*	45.7
5 1 8	1 7 0	13.7	80.7	71.1	4 800*							13.7
		15.2	79.4	70.8	4 800*							15.2
		16.8	78.1	70.5	4 800*							16.8
		18.3	76.9	70.1	4 700*	79.9	69.7	4 500*				18.3
		19.8	75.6	69.7	4 700*	78.6	69.3	4 500*				19.8
		21.3	74.3	69.3	4 600*	77.3	68.8	4 500*	80.6	67.4	3 500*	21.3
		24.4	71.7	68.3	4 500*	74.6	67.8	4 400*	77.9	66.4	3 500*	24.4
		27.4	69.0	67.2	4 100*	72.0	66.7	4 400*	75.2	65.2	3 400*	27.4
		30.5	66.3	65.9	3 400*	69.3	65.4	3 700*	72.4	63.9	3 400*	30.5
		33.5	63.6	64.4	2 800*	66.5	63.9	3 000*	69.6	62.3	3 300*	33.5
5 1 8	1 7 0	36.6	60.8	62.7	2 300*	63.6	62.2	2 500*	66.7	60.6	2 700*	36.6
		39.6	57.9	60.9	1 900*	60.7	60.3	2 000*	63.6	58.7	2 300*	39.6
		42.7	54.9	58.8	1 500*	57.7	58.2	1 700*	60.5	56.5	1 900*	42.7
		45.7				54.5	55.8	1 300*	57.3	54.0	1 500*	45.7