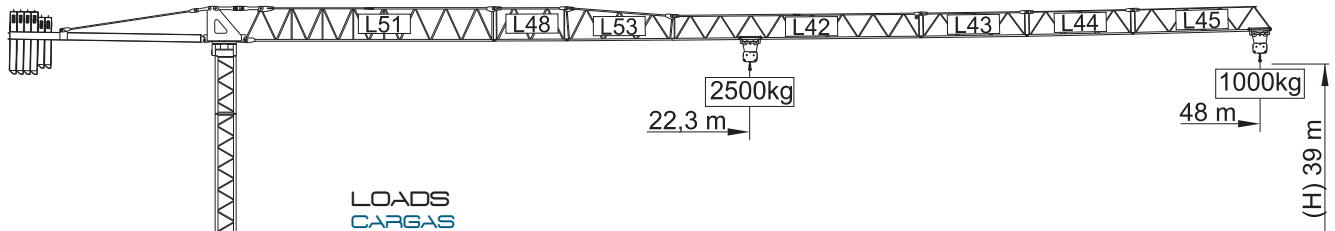
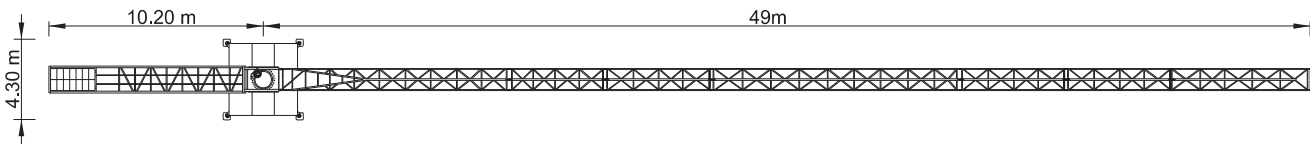
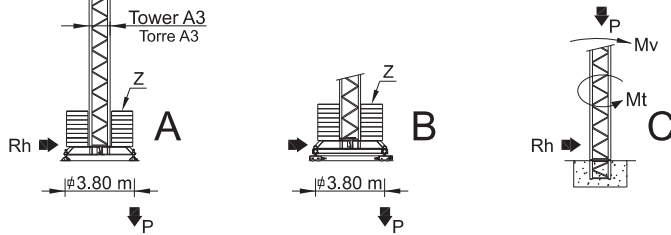


SGT 4810TL



LOADS CARGAS

Counterweight Contrapeso	Jib Length Comprimento da lança	Kg / m kg	m	23	26	31	35	38	43	48
				2500	2500	2500	2500	2500	2500	2500
11000kg 4x2000kg+2x1500kg	48 m L51+L48+L53+L42+L43+L44+L45	22,3 m	2500 kg	2410	2100	1710	1480	1340	1150	1000
11000kg 4x2000kg+2x1500kg	43 m L51+L48+L53+L42+L43+L45	24,6 m	2500 kg	2500	2350	1920	1670	1510	1300	
9500kg 4x2000kg+1x1500kg	38 m L51+L48+L53+L42+L45	25,8 m	2500 kg	2500	2480	2030	1760	1600		
8000kg 4x2000kg	35 m L51+L53+L42+L45	26,3 m	2500 kg	2500	2500	2070	1800			
8000kg 4x2000kg	31 m L51+L48+L53+L43+L45	26,7 m	2500 kg	2500	2500	2100				
7000kg 2x2000kg+2x1500kg	26 m L51+L48+L53+L45	25,1 m	2500 kg	2500	2400					
5000kg 1x2000kg+2x1500kg	23 m L51+L48+L45	23 m	2500 kg	2500						



REACTIONS REAÇÕES

BALLAST TABLE AND MAXIMUM REACTIONS FOR ALL JIB VERSIONS TABELA DE LASTRO E REAÇÕES MÁXIMAS PARA TODAS AS VERSÕES DE LANÇA						
H m	A / B		C			
	Z kN	P kN	Mv kNm	P kN	Rh kN	Mt kNm
21	450	346	927	259	22	53
24	450	352	953	265	25	53
27	450	359	983	270	29	53
30	500	379	1016	275	32	53
33	500	387	1052	281	35	53
36	550	410	1099	288	38	53
39	600	432	1142	293	41	53

CHARACTERISTICS CARACTERÍSTICAS

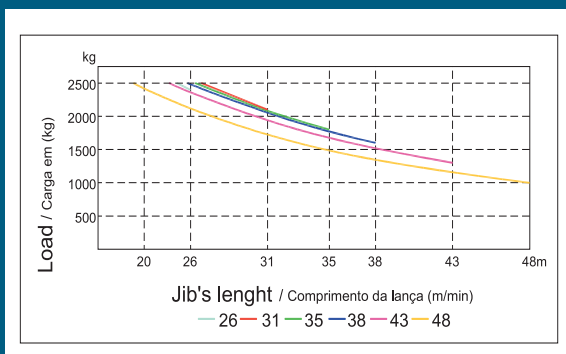
Motions Movimento	Speed Velocidade	Motor's power Pot. dos motores
Hoisting Elevação	0 a 68 m/min.	11 kW
Slewing Orientação	0 a 1 r.p.m.	2x3 daN.m
Trolleying Distribuição	0 a 50 m/min.	1,5 kW
Travelling* Translação	15 m/min.	2x3 kW
Electric power / Potência total		20 KVA
Tension / Tensão		400 v +- 5% (50 Hz)

* Option / Opção

PARTS
ELEMENTOS

		A (mm)	B (mm)	C (mm)	Peso (kg)
Jib section Lana L51		11950	1300	2250	2900
Jib section Lana L48		3190	1160	1650	350
Jib section Lana L53		5200	1160	1650	510
Jib section Lana L42		11820	1160	1210	820
Jib section Lana L43		5100	1160	1210	260
Jib section Lana L44		5100	1160	1210	230
Jib section Lana L45		6800	1160	1210	290
Tower section 12m Tramo torre 12m A3		11985	1180	1180	2450
Tower section 6m Tramo torre 6m A3		6075	1180	1180	1300
Tower section 3m Tramo torre 3m A3		3120	1180	1180	720
Telescopic section Tramo telescopagem A3		3090	1385	1385	890
Head section Cabeote		2150	1320	2320	2800
Counter-jib Contra-lana		9350	1380	560	2000
Cross shaped base Chassis		5525	500	635	1075
Cross shaped base Chassis		2670	360	635	535
Ballast Contra-peso		1160	320	2405	1500
		1160	330	2950	2000
Foundation tower Tramo de encastrar		1200	1160	1160	350

LOAD DIAGRAM
DIAGRAMA DE CARGAS



SPEED DIAGRAM
DIAGRAMA DE VELOCIDADE

