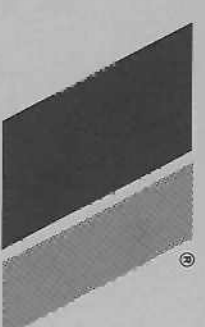


# NATIONAL SERIES 600B TELESCOPING CRANES

## Load Ratings for Available Boom and Jib Options



**NATIONAL CRANE**  
Subsidiary of Kilde, Inc.  
**KIDDE**

**General Offices:**  
11200 North 148th Street • Waverly, NE 68462  
(402) 786-2240  
Telex: 438061

## Boom and Jib Combinations

### Telescoping Booms

- Model 638B: 15 2/3- to 38-foot three section
- Model 647B: 18 2/3- to 47-foot three section
- Model 656B: 21 2/3- to 56-foot three section
- Model 666B: 25- to 66-foot three section

The capacities shown will be reduced when accessories are attached to the boom or loadline.

### Jib Options (side stowing)

- Model 6FJ15: 15-foot straight (for Model 638B)
- Model 6FJ18: 18-foot straight (for Model 647B)
- Model 6FJ21: 21-foot straight (for Model 656B)
- Model 6FJ23M: 15- to 23-foot manual pullout (for Model 638B)
- Model 6FJ25: 25-foot straight (for Model 666B)
- Model 6FJ29M: 18- to 29-foot manual pullout (for Model 647B)
- Model 6FJ35M: 21- to 35-foot manual pullout (for Model 656B)
- Model 6FJ42M: 25- to 42-foot manual pullout (for Model 666B)

## NATIONAL SERIES 600B WINCH DATA

### CAUTION:

Do not deadhead lineblock against boom tip when extending boom. Keep at least three wraps of loadline on drum at all times. Use only the specified cable on this machine.

Winch	Cable Supplied	Average Breaking Strength	Lift and Speed			
			1 Part Line	2 Part Line	3 Part Line	4 Part Line
Standard Planetary Winch	Standard 9/16" diameter rotation resistant	35,000 lbs.	Data applies to all 600B booms			
			7,000 lbs. 150 fpm	14,000 lbs. 75 fpm	21,000 lbs. 50 fpm	28,000 lbs. 37 fpm
With Optional Burst-of-Speed Feature**	Optional 9/16" diameter 6 x 25 WHRC	29,750 lbs.	*Applicable to the 666B boom. †Applicable to all other Series 600B booms. Speeds shown are the same for all Series 600B booms.			
			3,000 lbs. 240 fpm	6,000 lbs. 120 fpm	9,000 lbs. 80 fpm	12,000 lbs. 60 fpm
Same as corresponding cable data shown above						

## Important Information and Cautions

Do not operate cranes or accessories within 10 feet for live power lines.

1. Load ratings shown on these charts are maximum allowable loads with the outriggers properly extended on a firm, level surface and the crane leveled and mounted in a factory-recommended configuration.
2. Always level the crane with the level indicator on the crane frame.
3. The operator must reduce loads to allow for such factors as wind, ground conditions, operating speeds and the effect of freely suspended loads.
4. Overloading the crane may cause structural collapse or instability.
5. Weights of any accessories attached to the boom or loadline must be deducted from the load chart capacities.
6. Do not exceed jib capacities at any reduced boom length.

All winch pulls and speeds are shown on the third layer (the fourth layer on 666B). Winch pulls would increase on the first and second layers. Winch line speeds would decrease on the first and second layers. Winch line pulls may be limited by the winch capacity or the cable safety factor. These are shown below:

### Winch

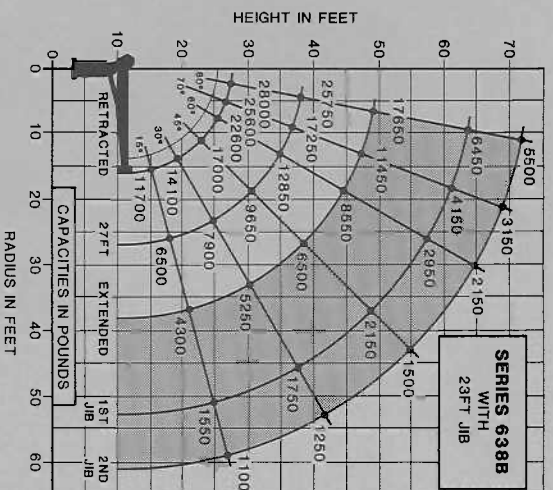
With standard rotation resistant rope ..... 10,200 pounds  
 With optional 6 x 25 WHRC rope ..... 10,200 pounds  
 \*\*This feature is available with either the standard or optional cable. Ratings are based on intermittent use. High cycle applications may require optional oil cooler.

### Bare Drum Pull

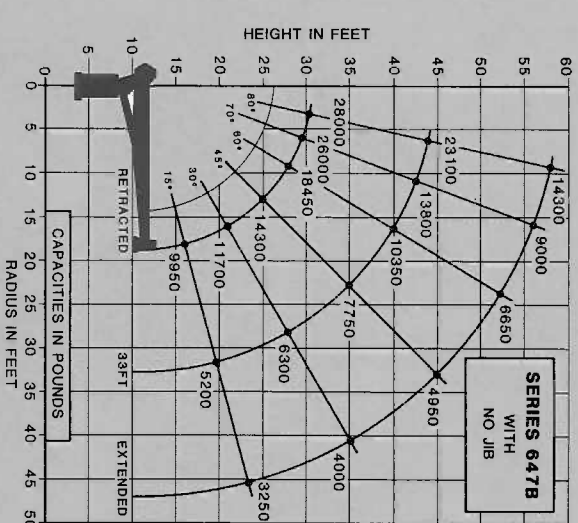
10,200 pounds  
 7,000 pounds  
 8,400 pounds

### Allowable Cable Pull

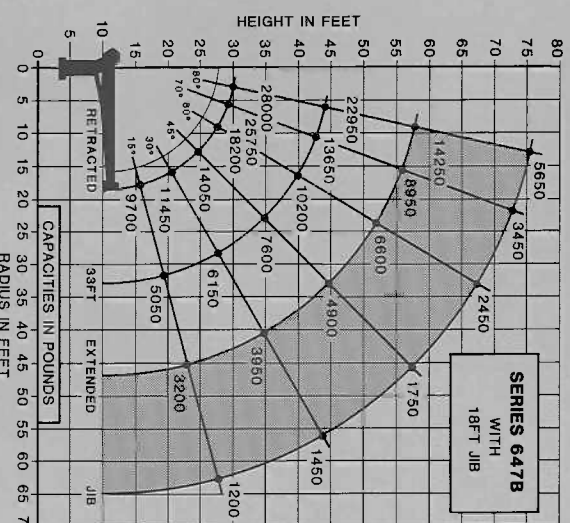
10,200 pounds  
 7,000 pounds  
 8,400 pounds



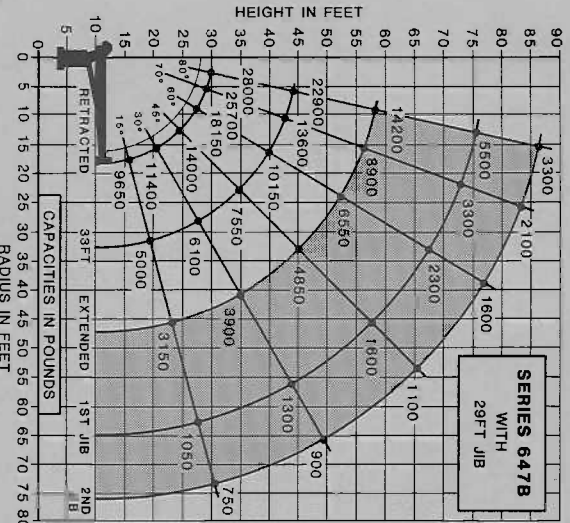
SERIES 638B WITH 29FT JIB



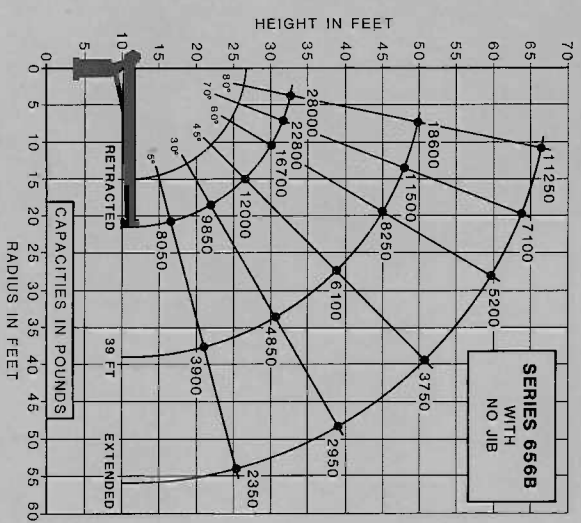
SERIES 647B WITH NO JIB



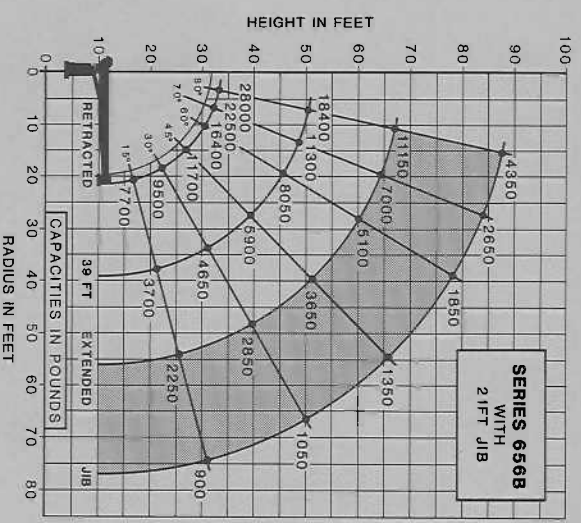
SERIES 647B WITH 18FT JIB



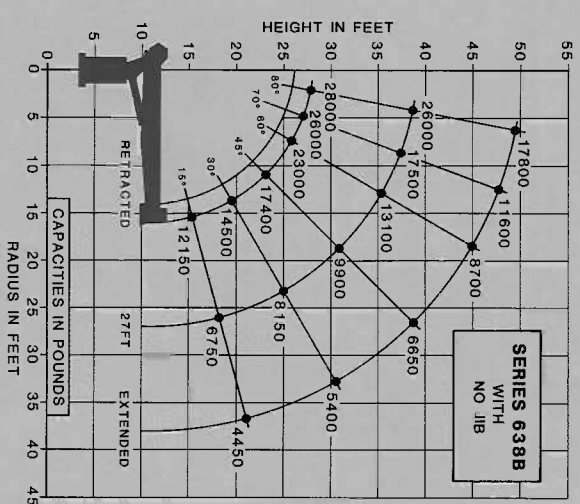
SERIES 647B WITH 29FT JIB



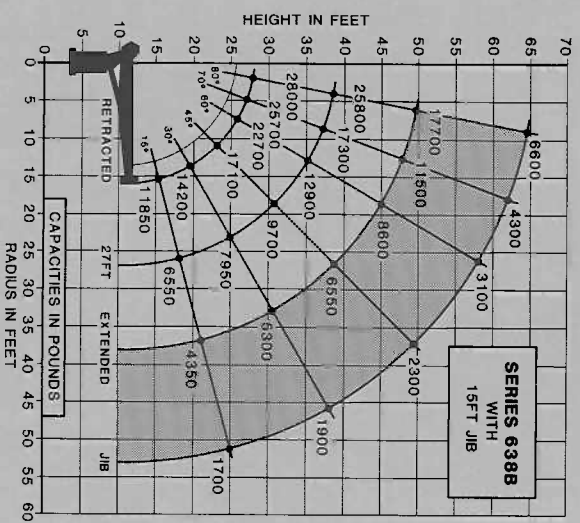
SERIES 656B WITH NO JIB



SERIES 656B WITH 24FT JIB



SERIES 638B WITH NO JIB



SERIES 638B WITH 15FT JIB

National reserves the right to change designs, prices and specifications at any time without notice.

Printed in USA

Form No. S600BLH6973M

© 1987 National Crane