

# ETT 29N-V

Van mounted aerial lift



## Innovative design

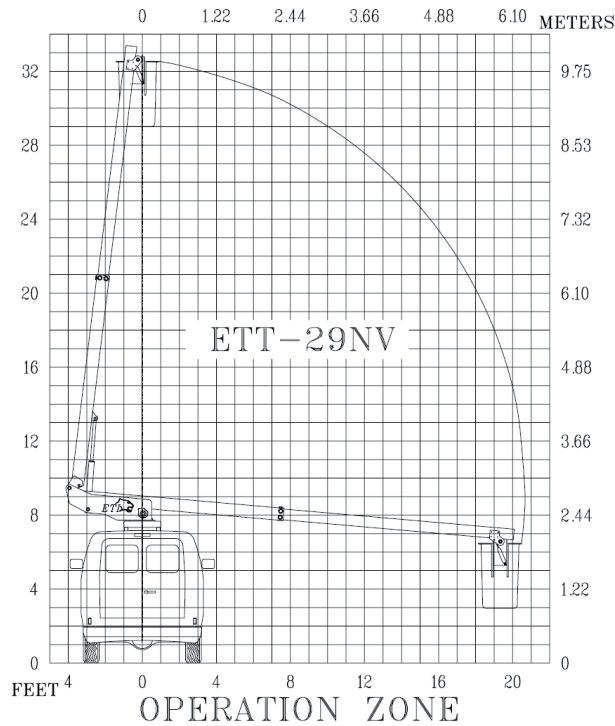
The ETT model series provides customers more options with an aerial that has a working height of 34 feet. The ETT29 N-V is a telescopic aerial mounted on a van designed for ease of use and access. Standard features include an inner boom actuated by a cylinder extension system, adjustable wear pads, and lower controls accessible from the ground. One competitive advantage of an ETI model is van mount units utilize a bridge frame in lieu of pedestal to increase interior storage capacity and greater accessibility.

**ETI.**  
A PALFINGER Company

Equipment Technology LLC is a full service solution provider of the highest quality design, manufacturing, and post sale service.

Equipment Technology LLC  
 341 NW 122nd  
 Oklahoma City, OK 73114  
 Toll-Free: 1-888-748-3841  
 Fax: 1-405-755-6829  
 www.eti1.com

## ETT 29N-V



### Standard Features

- Van mounted units utilize a bridge frame in lieu of pedestal providing increased storage capacity and greater accessibility to van interior.
- Shear ball rotation gear driven by internal drive gear box.
- All pins turn on replaceable bushings.
- The gear box has an extended shaft for manual rotation.
- Inner boom is actuated by a cylinder extension system.
- Adjustable wear pads.
- Internally mounted holding valves (integral part of cylinder) lock cylinders in place in event of hydraulic failure.
- Lower controls accessible from the ground.

### Hydraulic power options

- Fan belt pump
- PTO/pump
- Engine generator
- DC Power

### General Specifications\*

Bridge mount pedestal for van*	
Height to bottom of bucket	29 ft. - 0 in.
Working height	34 ft. - 0 in.
Side reach	20 ft. - 9 in.
Stow height	9 ft. - 5 in.
Rated bucket capacity	350 lbs.

### Hydraulic System

Operating pressure (min)	2,000 psi.
Operating volume (min)	2.5 gpm

### Minimum vehicle specifications

	Gas engine	Diesel engine	Recommended
GVWR	9,400 lbs.	9,400 lbs.	9,400 lbs.
GAWR (front)	3,900 lbs.	4,200 lbs.	4,200 lbs.
GAWR (rear)	5,000 lbs.	5,400 lbs.	5,400 lbs.



### Options

- Hydraulic platform leveling
- Emergency hydraulic power system
- Start/stop system
- Two speed throttle system
- Bucket cover
- Air line to bucket
- Electric tool circuit
- Oversize bucket (24" x 30" x 42")
- Splicer bucket