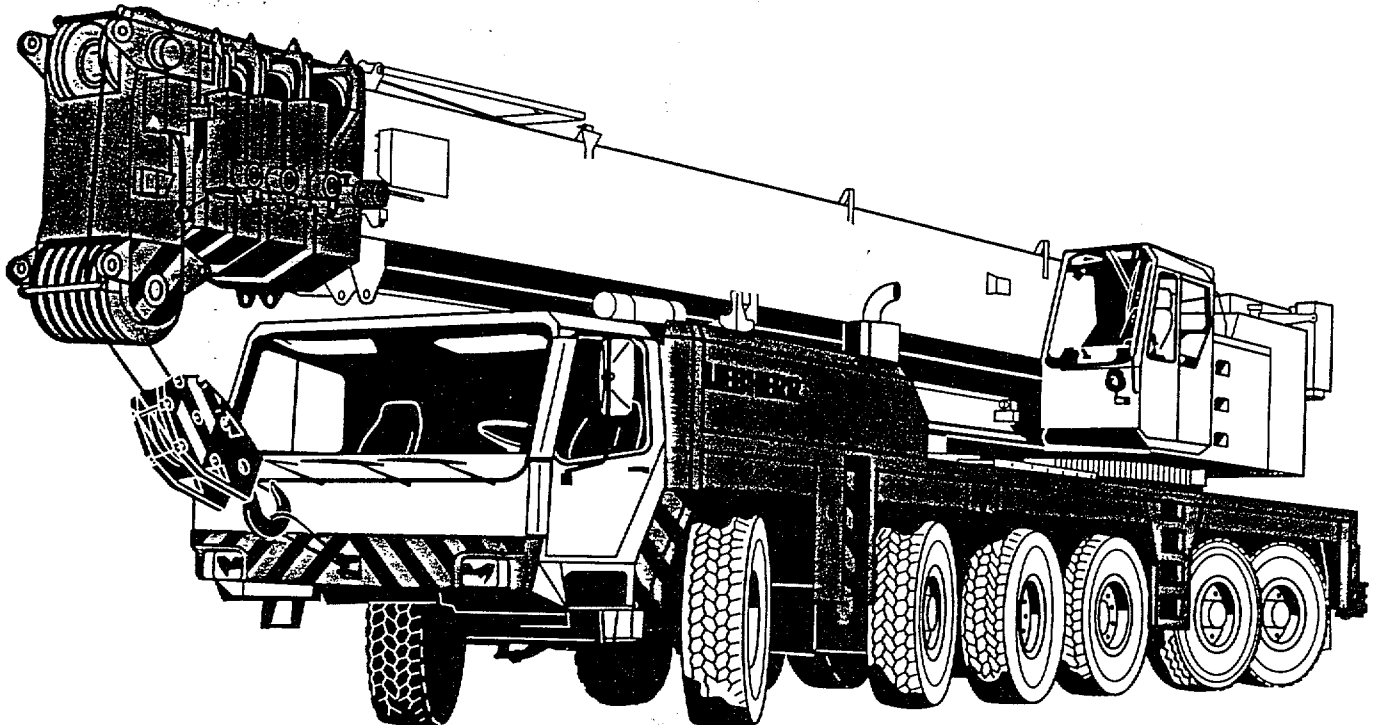


LIEBHERR

LTM 1225-A

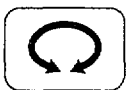
300 TON



Lifting capacities at telescopic boom.



50 ft - 197 ft



360°



176 400 lbs



85%

ft	50 ft		67 ft	84 ft	100 ft	117 ft	134 ft	151 ft	168 ft	185 ft	197 ft	ft					
	1)	2)															
9	600											9					
10	482	400	392									10					
11	463	377	373									11					
12	441	355	354	317								12					
13	417	335	334	300								13					
14	393	319	319	287	245	97						14					
15	369	305	305	275	245	97						15					
16	348	295	294	267	241	97						16					
17	329	286	283	260	236	97	181	162				17					
18	311	278	272	252	230	97	181	159				18					
20	279	261	250	238	217	96.5	181	153	143	90		20					
22	254	247	233	226	205	92	174	147	142	86.5		22					
24	232	231	217	213	194	87.5	167	141	140	82.5	110	24					
26	212	212	202	200	184	83	159	135	135	79	110	26					
28	197	197	190	188	175	78.5	151	129	131	76	108	86	68	28			
30	183	183	179	176	166	75	144	124	126	72.5	105	86	67	67	30		
32	170	170	169	166	159	71.5	137	118	121	69.5	102	84.5	65.5	67	32		
34	160	156	155	156	151	68.5	131	114	116	67	99	82.5	64	66.5	52	43.5	34
36	151	141	140	147	143	65.5	124	109	112	64	96	80.5	62.5	66	52	43.5	36
38	142		125	139	136	63	118	105	107	61.5	93.5	78	61	65	52.1	43.4	38
40				130	129	60	113	100	102	58.9	90.5	76	59.6	64	52	43.3	40
45				114	112	54.8	102	91	92	53.2	82.5	71	55.8	60.5	50.3	42.9	45
50				98.5	99.5	50.3	92	83	83	48.4	75.5	66	52	57.2	48.4	42.1	50
55					88	46.5	83.5	76	75	44	68.5	61.5	48.3	53.9	46.5	41	55
60					78.5	43.3	76	70.5	68	40.2	63	57.1	44.8	50.7	44.4	39.9	60
65					70	40.6	70	65.5	62	37	58.4	53.2	41.6	47.7	42.1	38.3	65
70						38.3	64	61.5	57.2	34.2	53.9	49.3	38.8	44.8	39.9	36.6	70
75							58.3	58.1	52.8	31.7	49.8	45.9	36.1	42.2	37.7	34.9	75
80							52.1	54.4	49	29.6	46.2	42.9	33.7	39.6	35.7	33.1	80
85							44.2	48.8	45.8	27.7	42.9	40.2	31.5	37.2	33.7	31.4	85
90									43.1	26.1	40.1	37.5	29.6	35.1	31.9	29.8	90
95									40.2	24.7	37.5	35.1	27.8	33	30.1	28.1	95
100										23.5	35.2	32.8	26.2	31.1	28.5	26.3	100
105											33.1	30.8	24.8	29.4	26.9	24.5	105
110											31.3	29	23.6	27.8	25.5	22.8	110
115											27.7	27.3	22.5	26.3	24.2	21.1	115
120												25.8	21.4	24.9	22.9	19.6	120
125												24.4	20.5	23.6	21.7	18.2	125
130												23.2	19.7	22.4	20.7	17	130
135														21.2	19.7	15.8	135
140															20.1	18.7	140
145															18.9	17.9	145
150															16.5	17.1	150
155																16.3	155
160																15.7	160
165																11.5	165
170																11.1	170
175																10.7	175
	I	0		46	92	0	92	0	92	0	92	92	0	92	92	100	I
	II	0		0	0	0	46	92	92	0	92	92	92	92	92	100	II
	III	0		0	0	0	0	46	0	92	46	92	92	92	92	100	III
	IV	0		0	0	92	0	0	0	92	0	0	92	46	92	100	IV

1) with additional equipment, over rear, support base 33'9 1/2" x 18'8 1/2"
 2) with additional pulley block, over rear, support base 33'9 1/2" x 28'2 1/2"

Lifting capacities are given in kips (1,000 lbs).



50 ft - 197 ft



360°



143 300 lbs



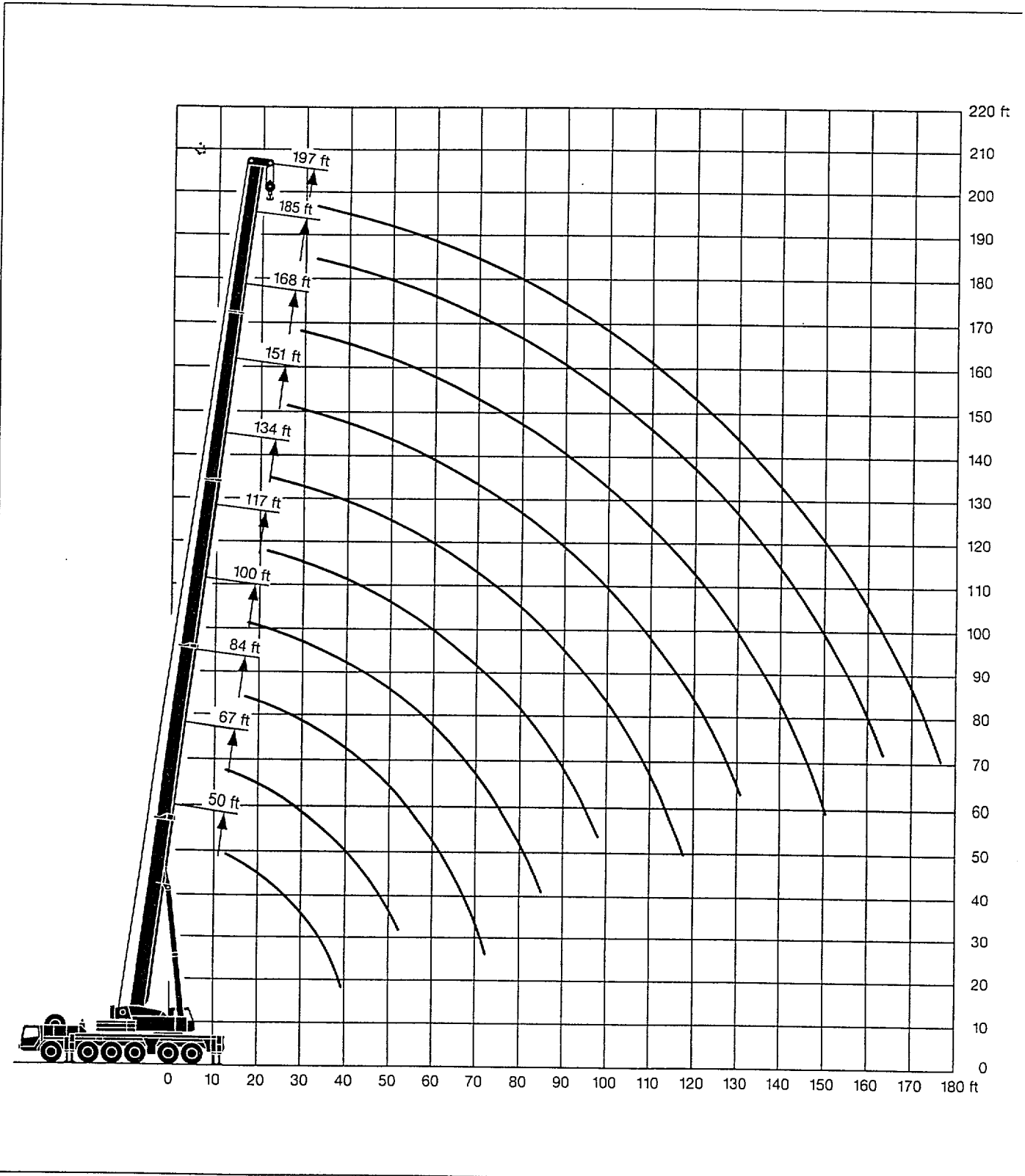
85%

ft	50 ft			67 ft	84 ft	100 ft	117 ft	134 ft	151 ft	168 ft	185 ft	197 ft	ft				
	1)	2)															
10	481	400	390										10				
11	457	377	371										11				
12	431	355	352	317									12				
13	403	335	334	300									13				
14	378	319	319	287	245	97							14				
15	354	305	304	275	245	97							15				
16	332	295	291	267	241	97							16				
17	314	286	279	260	236	97	181	162					17				
18	297	278	268	252	230	97	181	159					18				
20	266	260	247	238	217	96.5	181	153	143	90			20				
22	242	240	229	225	205	92	174	147	142	86.5			22				
24	221	221	214	211	194	87.5	167	141	140	82.5	110		24				
26	202	202	200	197	184	83	159	135	135	79	110		26				
28	187	187	186	183	175	78.5	151	129	131	76	108	86	68	28			
30	174	174	173	170	166	75	144	124	126	72.5	105	86	67	30			
32	162		162	159	157	71.5	137	118	121	69.5	102	84.5	65.5	32			
34	152		150	150	148	68.5	131	114	116	67	99	82.5	64	66.5	52	43.5	34
36	143		137	141	139	65.5	124	109	112	64	96	80.5	62.5	66	52	43.5	36
38	135		124	132	131	63	118	105	107	61.5	93.5	78	61	65	52.1	43.4	38
40				124	123	60	113	100	102	58.9	90.5	76	59.6	64	52	43.3	40
45				108	107	54.8	102	91	92	53.2	82.5	71	55.8	60.5	50.3	42.9	45
50				94.5	93	50.3	92	83	83	48.4	75.5	66	52	57.2	48.4	42.1	50
55					82	46.5	82.5	76	75	44	68.5	61.5	48.3	53.9	46.5	41	55
60					72.5	43.3	74	70.5	68	40.2	63	57.1	44.8	50.7	44.4	39.9	60
65					64.5	40.6	66	65.5	62	37	58.4	53.2	41.6	47.7	42.1	38.3	65
70						38.3	59.1	61.5	57.2	34.2	53.9	49.3	38.8	44.8	39.9	36.6	70
75							53.2	57.3	52.6	31.7	49.8	45.9	36.1	42.2	37.7	34.9	75
80							47.7	52.7	48.3	29.6	46.2	42.9	33.7	39.6	35.7	33.1	80
85							42.6	47.7	43.8	27.7	42.9	40.2	31.5	37.2	33.7	31.4	85
90									39.4	26.1	40.1	37.5	29.6	35.1	31.9	29.8	90
95									35.5	24.7	37.1	35.1	27.8	33	30.1	28.1	95
100										23.5	33.9	32.8	26.2	31.1	28.5	26.3	100
105											30.8	30.8	24.8	29.4	26.9	24.5	105
110											28	29	23.6	27.8	25.5	22.8	110
115											25.5	26.9	22.5	26.3	24.2	21.1	115
120												24.7	21.4	24.9	22.9	19.6	120
125												22.5	20.5	23.6	21.7	18.2	125
130												20.7	19.7	22.4	20.7	17	130
135														20.8	19.7	15.8	135
140														19.2	18.7	14.8	140
145														17.6	17.9	13.9	145
150														18.3	17.1	13.1	150
155															16.2	12.5	155
160															15.1	11.9	160
165																11.5	165
170																11.1	170
175																10.7	175
I	0		46	92	0	92	0	92	0	92	92	0	92	92	100	I	
II	0		0	0	0	46	92	92	0	92	92	92	92	92	100	II	
III	0		0	0	0	0	46	0	92	46	92	92	92	92	100	III	
IV	0		0	0	92	0	0	0	92	0	0	92	46	92	100	IV	

1) with additional equipment, over rear, support base 33'9 1/4" x 18'8 1/2"
 2) with additional pulley block, over rear, support base 33'9 1/4" x 28'2 1/2"

TAB 98074 / 98077

Lifting heights.





50 ft - 197 ft



360°



99 200 lbs



85%

ft	50 ft		67 ft	84 ft	100 ft	117 ft	134 ft	151 ft	168 ft	185 ft	197 ft	ft						
	1)	2)																
10	469	400	383									10						
11	436	377	363									11						
12	404	355	344	317								12						
13	374	335	326	300								13						
14	349	319	314	287	245	97						14						
15	326	305	297	275	245	97						15						
16	306	295	284	267	241	97						16						
17	289	284	272	260	236	97	181	162				17						
18	273	270	261	252	230	97	181	159				18						
20	244	244	240	237	217	96.5	181	153	143	90		20						
22	222	222	221	217	205	92	174	147	142	86.5		22						
24	203	203	202	200	193	87.5	167	141	140	82.5	110	24						
26	186		186	183	181	83	159	135	135	79	110	26						
28	172		172	170	166	78.5	151	129	131	76	108	86	68	28				
30	159		159	157	151	75	143	124	126	72.5	105	86	67	67	30			
32	148		148	145	139	71.5	133	118	121	69.5	102	84.5	65.5	67	32			
34	138		138	135	128	68.5	124	114	115	67	99	82.5	64	66.5	52	43.5	34	
36	129		129	126	119	65.5	115	109	109	64	96	80.5	62.5	66	52	43.5	36	
38	120		120	117	109	63	106	105	102	61.5	93.5	78	61	65	52.1	43.4	38	
40				109	101	60	98.5	100	96	58.9	90	76	59.6	64	52	43.3	40	
45				92.5	85	54.8	83.5	89	81.5	53.2	80	71	55.8	60.5	50.3	42.9	45	
50				78.5	73	50.3	72	78	70.5	48.4	70	66	52	57.2	48.4	42.1	50	
55					63	46.5	62.5	68.5	61.5	44	61.5	60.5	48.3	53.9	46.5	41	55	
60					54.7	43.3	54.3	60	53.6	40.2	53.9	53.9	44.8	50.7	44.4	39.9	60	
65					47.4	40.6	47.8	53.6	47.3	37	47.8	47.9	41.6	47.7	42.1	38.3	65	
70						38.3	42.4	48.1	42	34.2	42.6	42.9	38.8	43.7	39.9	36.6	70	
75							37.4	43	37.4	31.7	38.1	38.5	36.1	39.7	37.7	34.9	75	
80							32.8	38.2	33.4	29.6	34.1	34.7	33.7	35.9	35.5	33.1	80	
85								28.7	34	28.8	27.7	30.7	31.3	31.5	32.5	33.1	85	
90										26.4	26.1	27.7	28.3	29.6	29.6	29.8	90	
95										23.2	24.7	25	25.7	27.8	27	27.7	95	
100											23.5	22.4	23.3	26.2	24.6	25.4	100	
105												19.8	21.1	24.8	22.4	23.2	105	
110												17.6	19	23.6	20.5	21.4	110	
115												15.6	17.1	22.5	18.8	19.6	115	
120													15.2	21.1	17.1	18	120	
125													13.5	19.4	15.4	16.5	125	
130													12	17.9	13.9	15.1	130	
135														12.5	13.7	13.9	135	
140														11.2	12.5	12.6	140	
145															10	11.3	11.4	145
150															8.9	10.2	10.3	150
155																9.2	9.2	155
160																8.2	8.3	160
165																	7.4	165
170																	6.6	170
175																	5.8	175
I		0		46	92	0	92	0	92	0	92	92	0	92	92	100	I	
II		0		0	0	0	46	92	92	0	92	92	92	92	92	100	II	
III		0		0	0	0	0	46	0	92	46	92	92	92	92	100	III	
% IV		0		0	0	92	0	0	0	92	0	0	92	46	92	100	IV	

1) with additional equipment, over rear, support base 33'9 1/4" x 18'8 1/4"
 2) with additional pulley block, over rear, support base 33'9 1/4" x 28'2 1/4"

Lifting capacities at guyed telescopic boom.



117 ft - 197 ft



360°



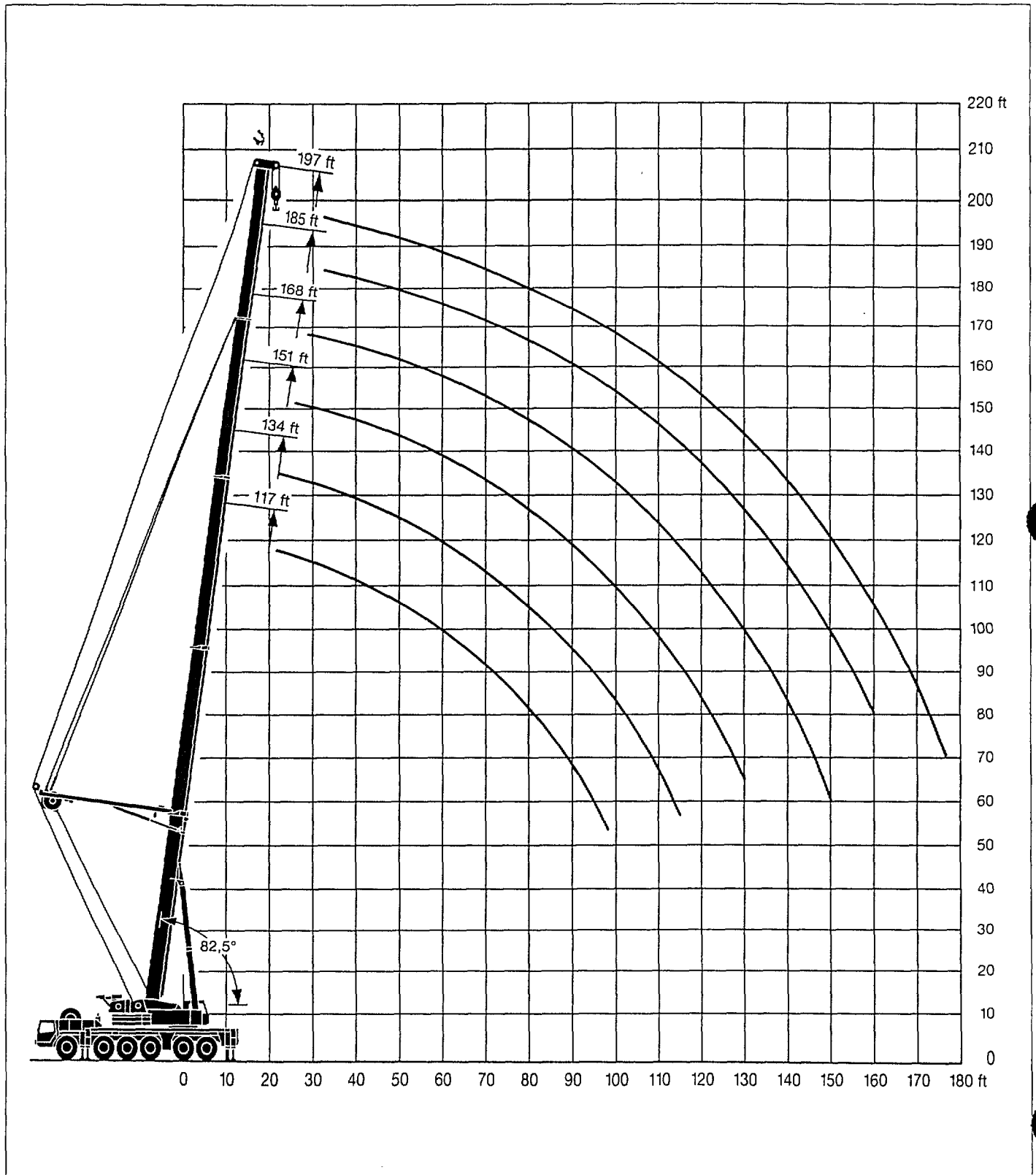
231 500 lbs

85%

ft	117 ft	134 ft	151 ft	168 ft	185 ft	197 ft	ft
20	149						20
22	149						22
24	149	114					24
26	149	114					26
28	149	114	87.5				28
30	149	114	87	66.5			30
32	149	114	86.5	66.5			32
34	146	114	86	66.5	49.7	41.2	34
36	141	114	85.5	66	49.7	41.2	36
38	136	114	85	66	49.7	41.2	38
40	130	114	84.5	65.5	49.6	41.2	40
45	116	112	83.5	64	48.4	41.2	45
50	103	104	82	63	47.8	41.2	50
55	91.5	93.5	80.5	62	47.4	41	55
60	81.5	83.5	79	60.5	46.9	40.5	60
65	73	75	76	59.7	46.3	40.3	65
70	66	68	69.5	58.8	45.7	40	70
75	59.6	62	63.5	58	45	39.7	75
80	54.1	56.2	58	56.9	44.4	39.4	80
85	49.2	51.3	53.1	55	43.9	39.1	85
90	44.7	47.1	48.9	51	43.4	38.5	90
95	40.6	43.1	44.9	47.1	43	37.8	95
100		39.4	41.3	43.6	42.5	37.2	100
105		36	37.9	40.2	41.8	36.5	105
110		33	34.9	37.3	38.9	35.9	110
115		29.5	32.2	34.5	36.1	35.3	115
120			29.6	32	33.6	34	120
125			27.3	29.6	31.3	31.7	125
130			25.1	27.5	29.1	29.6	130
135				25.5	27.2	27.6	135
140				23.6	25.3	25.7	140
145				21.6	23.6	24	145
150				18.1	22	22.4	150
155					20.5	20.9	155
160					18.9	19.5	160
165						18.2	165
170						16.9	170
175						14.3	175
I	92	92	92	92	92	100	I
II	92	92	92	92	92	100	II
III	0	46	92	92	92	100	III
% IV	0	0	0	46	92	100	IV

Lifting heights.

Guyed telescopic boom.



Lifting capacities at the lattice fly jib.



168 ft - 185 ft



0° / 20°
46 ft - 138 ft



360°



143 300 lbs



85%

ft	168 ft				185 ft								ft
	46 ft		76 ft		69 ft		92 ft		115 ft		138 ft		
	0°	20°	0°	20°	0°	20°	0°	20°	0°	20°	0°		
50	32.7		23.4									50	
55	32.7		23.4			17.8						55	
60	32	19.4	23.5			17.9		13.8		10.4		60	
65	30.3	18.7	23.5			18		13.9		10.4		65	
70	28.8	18.1	23	14.8	18.1			13.9		10.5		70	
75	27.3	17.6	22.3	14.3	17.9	11.2		13.9		10.5	7.7	75	
80	26	17	21.5	13.8	17.3	10.7		13.8		10.4	7.7	80	
85	24.8	16.5	20.7	13.4	16.7	10.3		13.3		10.2	7.6	85	
90	23.7	15.9	20	12.9	16.1	9.9		12.9	7.8	10	7.4	90	
95	22.6	15.2	19.2	12.5	15.5	9.5		12.4	7.5	9.6	7.3	95	
100	21.6	14.6	18.5	12.2	14.9	9.2		11.9	7.2	9.3	5.7	100	
105	20.7	13.9	17.8	11.8	14.3	8.9		11.5	6.9	8.9	5.5	105	
110	19.9	13.3	17.1	11.4	13.7	8.6		11	6.6	8.6	5.3	110	
115	19.1	12.8	16.4	11	13.2	8.3		10.6	6.4	8.2	5.1	115	
120	18.4	12.3	15.8	10.6	12.6	8		10.1	6.1	7.9	4.9	120	
125	17.7	11.8	15.2	10.1	12.1	7.7		9.7	5.9	7.6	4.7	125	
130	17.1	11.3	14.6	9.8	11.6	7.5		9.3	5.7	7.3	4.5	130	
135	16.5	10.9	14	9.4	11	7.3		8.8	5.5	7	4.4	135	
140	15.7	10.5	13.5	9	10.6	7		8.4	5.3	6.7	4.2	140	
145	14.9	10.1	12.9	8.7	10.1	6.8		8	5.1	6.5	4	145	
150	14.1	9.8	12.5	8.4	9.7	6.7		7.7	5	6.2	3.9	150	
155	13.4	9.5	12	8.1	9.3	6.5		7.3	4.8	5.9	3.8	155	
160	12.7	9.1	11.5	7.9	8.9	6.3		7	4.7	5.7	3.6	160	
165	12	8.8	11.1	7.6	8.5	6.1		6.7	4.5	5.4	3.4	165	
170	11.4	8.5	10.5	7.4	8.1	6		6.4	4.4	5.2	3.3	170	
175	10.8	8.2	10	7.2	7.8	5.9		6.1	4.3	5	3.3	175	
180	10.1	7.9	9.4	6.9	7.5	5.7		5.9	4.2	4.8	3.2	180	
185	9.3	7.6	9	6.7	7.2	5.4		5.6	4.1	4.6	3	185	
190	8.4	7.3	8.5	6.6	7	5.3		5.4	4	4.4	2.8	190	
195	6.7	6.7	8.1	6.4	6.7	5.1		5.2	3.8	4.2	2.7	195	
200			7.6	6.3	6.5	5		5	3.7	4	2.6	200	
205			7.1	6.1	6.3	4.8		4.8	3.6	3.8		205	
210					6.1	4.7		4.6	3.5	3.7		210	
215					5.9	4.5		4.4	3.4	3.5		215	
220					5.6	4.4		4.3	3.3	3.3		220	
225					5.2	4.3		4.2	3.2	3.3		225	
230						4.2		4.1	3.1	3.1		230	
235						4.1		3.8	3.1	2.9		235	
240								3.7	3	2.7		240	
245								3.5	3	2.6		245	
250									2.9	2.3		250	
255									2.8	2.2		255	

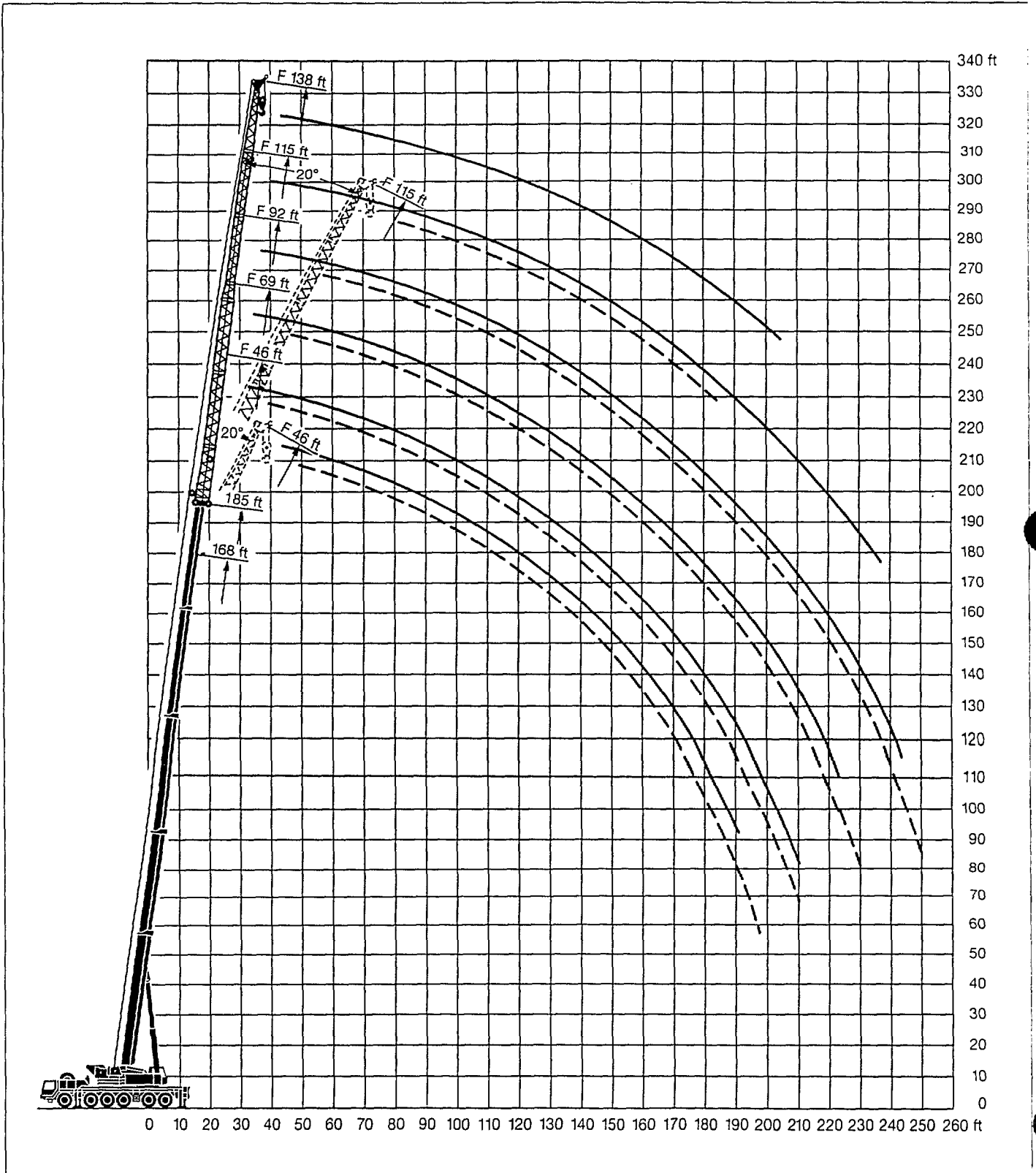
TAB 98079 / 98081

Remarks referring to load charts.

1. The tabulated lifting capacities do not exceed 85 % of the tipping load.
2. The crane's structural steelwork is in accordance with DIN 15018, part 3. Design and construction of the crane comply with DIN 15018, part 2, and with F. E. M. regulations.
3. The 85 % overturning limit values take into account wind force 5 = wind speed 20 mph.
4. Lifting capacities are given in kips.
5. The weight of the hook blocks and hooks must be deducted from the lifting capacities.
6. Working radii are measured from the slewing centreline.
7. The lifting capacities given for the telescopic boom only apply if the folding jib is taken off.
8. Lifting capacities are subject to modifications.
9. Lifting capacities above 356 kips only with special equipment.

Lifting heights.

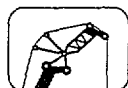
Lattice fly jib.



Lifting capacities at the luffing lattice jib.



82°
50 ft - 84 ft



57 ft - 207 ft



360°



99 200 lbs

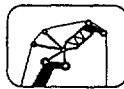


85%

ft	50 ft								84 ft								ft
	57 ft	69 ft	92 ft	115 ft	138 ft	161 ft	184 ft	207 ft	57 ft	69 ft	92 ft	115 ft	138 ft	161 ft	184 ft	207 ft	
30		114															30
32		112															32
34	109	111	86														34
36	106	109	85.5														36
38	104	107	84.5														38
40	100	104	84	65.5					94	83	66.5						40
45	84	89.5	82	64					93	82.5	66						45
50	69.5	77.5	77.5	63	50.4				83.5	81.5	65.5	48.7					50
55	54.6	66	70.5	62	49.4	39.7			71.5	77	64.5	48	39.5				55
60		56.1	62	60.5	48.5	39			58.6	68	64	47.3	39.4	29.2			60
65		47.4	54.9	58.5	47.5	38.4			46.7	57.9	63	46.5	38.9	29.2			65
70			48.6	53.3	46.6	37.8	30.3			47.7	56.9	45.8	38.3	29	23.6		70
75			42.6	48.3	45.6	37.1	29.8	21.8			50.7	45.1	37.7	28.6	23.3		75
80			37	43.7	44.5	36.5	29.3	21.4			44.9	44.3	37.2	28.3	23.1	18	80
85			31.4	39.5	42.7	35.8	28.8	21.1			39.2	43.6	36.6	28	22.9	17.8	85
90			25.4	35.6	39.4	35.2	28.4	20.7			33.9	40.3	36	27.7	22.6	17.7	90
95				31.9	36.1	34.5	27.9	20.4			27.3	36.8	35.4	27.4	22.4	17.5	95
100				28.2	33.1	33.5	27.4	20				33.3	34.8	27	22.1	17.3	100
105				24.7	30.2	31.7	26.9	19.7				29.8	33.9	26.7	21.9	17.1	105
110				21.5	27.5	29.4	26.4	19.4				26.7	31.3	26.4	21.7	16.9	110
115					24.9	27.2	26	19.1				22.6	28.7	26.1	21.4	16.7	115
120					22.4	25	25.3	18.8					26.2	25.7	21.2	16.4	120
125					19.9	23	24.1	18.5					23.9	25.4	21	16	125
130					17.9	21.2	22.5	18.1					21.2	23.9	20.7	15.8	130
135					14.8	19.3	20.9	17.7					18.9	22.2	20.5	15.5	135
140						17.6	19.4	17.2					15.9	20.4	20.3	15.2	140
145						15.9	17.9	16.7						18.7	20	15	145
150						14.6	16.4	16.3						16.9	19.7	14.6	150
155						12.6	15	16						15.3	18.4	14.4	155
160							13.7	15.4						13.2	17	14.2	160
165							12.4	14.6							15.6	14	165
170							11.6	13.4							14.1	13.9	170
175							10.1	12.2							13	13.7	175
180							8.3	11.1							11.5	13.1	180
185								10.1							9.5	12.1	185
190								8.9							7.2	10.9	190
195								8								10.2	195
200								6.9								9.1	200
205																7.6	205



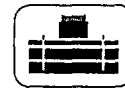
82°
117 ft - 168 ft



69 ft - 207 ft



360°



99 200 lbs

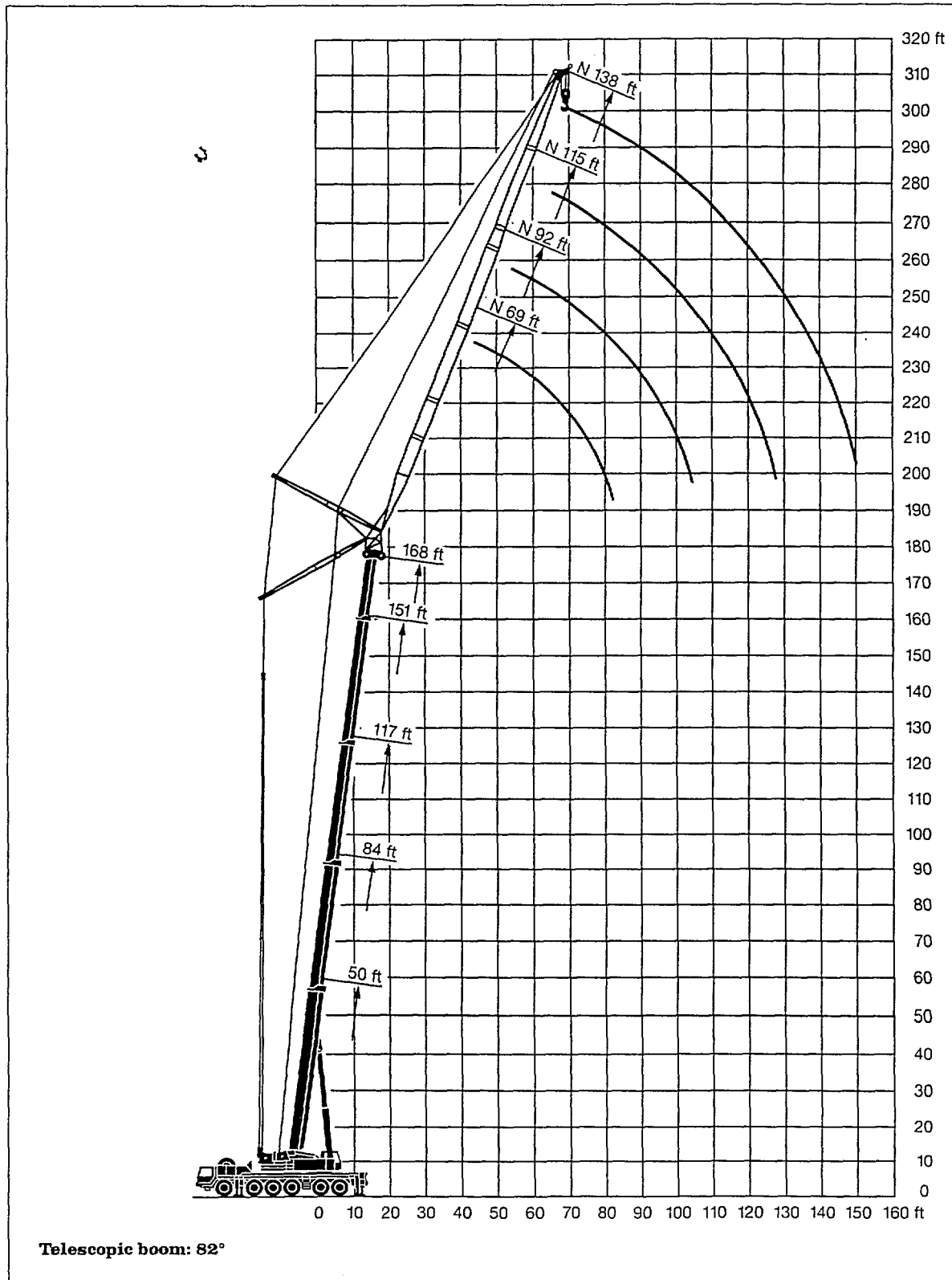


85%

ft	117 ft							151 ft							168 ft				ft
	69 ft	92 ft	115 ft	138 ft	161 ft	184 ft	207 ft	69 ft	92 ft	115 ft	138 ft	161 ft	184 ft	69 ft	92 ft	115 ft	138 ft		
50	52.4	43.3																50	
55	51.5	42.6	33.1					30.3	24.2					21				55	
60	50.5	41.8	32.5	26.8				29.7	23.9	17.2				20.6	15.4			60	
65	49.6	41.1	31.8	26.1				29.1	23.5	17				20.2	15.1			65	
70	48.6	40.4	31.3	26	19.8			28.5	23.1	16.8	12.8			19.8	14.9	10.2		70	
75	43.4	39.7	30.7	25.5	19.7	15.7		27.9	22.8	16.6	12.6	9.2		19.4	14.6	10	7.1	75	
80		38.9	30	25.1	19.5	15.5		27.3	22.4	16.4	12.5	9.1		19	14.3	9.7	7	80	
85		38.2	29.4	24.7	19.3	15.4		26.7	22.1	16.2	12.4	8.9		18.6	14.1	9.5	6.9	85	
90		37.5	29	24.3	19.2	15.3	11.4		21.7	16	12.3	8.8	6.4		13.8	9.3	6.8	90	
95		33.6	28.7	23.9	19	15.1	11.3		21.3	15.8	12.1	8.7	6.3		13.5	9	6.7	95	
100			28.4	23.5	18.8	15	11.1		21	15.5	12	8.6	6.2		13.2	8.8	6.5	100	
105			28.1	23	18.7	14.8	11			15.3	11.9	8.5	6.1		13	8.6	6.5	105	
110			27.8	22.9	18.5	14.7	10.9			15.1	11.8	8.3	6.1		12.7	8.3	6.3	110	
115			26.3	22.7	18.3	14.6	10.8			14.9	11.6	8.2	6			8.1	6.2	115	
120			22.9	22.5	18.1	14.4	10.6			14.7	11.5	8.1	5.9			7.9	6.1	120	
125				22.3	18	14.3	10.6			14.5	11.4	8	5.8			7.7	6	125	
130				22.1	17.8	14.1	10.5			14.2	11.3	7.9	5.8			7.4	5.9	130	
135				21.9	17.6	14	10.4				11.1	7.7	5.7				5.8	135	
140				20.2	17.5	13.9	10.4				11	7.6	5.6				5.7	140	
145				16.6	17.3	13.7	10.3				10.9	7.5	5.5				5.6	145	
150				13.9	17.1	13.6	10.2				10.7	7.4	5.4				5.5	150	
155					16.9	13.4	10.2					7.3	5.4				5.4	155	
160					16.1	13.3	10.1					7.1	5.3					160	
165					14.1	13.1	10.1					7	5.2					165	
170					10.4	13	10					6.9	5.1					170	
175						12.9	9.9					6.8	5.1					175	
180						12.6	9.8						5					180	
185						11.8	9.8						4.9					185	
190						9.6	9.7						4.8					190	
195						7.9	9.6						4.7					195	
200							9.5											200	
205							9.1											205	
210							7.9											210	
215							5.9											215	

Lifting heights.

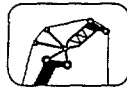
Luffing lattice jib.



Lifting capacities at the luffing lattice jib.



75°
50 ft - 84 ft



57 ft - 207 ft



360°



143 300 lbs



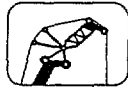
85%

ft	50 ft								84 ft								ft
	57 ft	69 ft	92 ft	115 ft	138 ft	161 ft	184 ft	207 ft	57 ft	69 ft	92 ft	115 ft	138 ft	161 ft	184 ft	207 ft	
50	92	88															50
55	79	83	67						79	70.5							55
60	65	73.5	66	50.6					73.5	69.5	54.9						60
65	49.5	63.5	65.5	50.4					69	67.5	54.4						65
70		53.6	59.9	50.1					61.5	64	53.9						70
75			53.7	49.8	39.8					59.8	53.4	40.5					75
80			47.7	49.1	39.5	31.4				53.4	52.9	40.1	31.8				80
85			42	47.1	39.2	31.1				41.3	52.5	39.8	31.6				85
90			36.6	43.2	38.9	30.9					48.2	39.5	31.3				90
95			31	39.2	38.6	30.6	25				43.1	39.1	31.1	24.9			95
100				35.5	37.7	30.4	24.8				37.8	38.8	30.9	24.7			100
105				32	35.7	30.1	24.6	19				38.5	30.6	24.5	19.5		105
110				28.4	33	29.9	24.3	18.8				35.7	30.5	24.4	19.4		110
115				24.8	30.5	29.5	24.1	18.7				32.5	30.1	24.2	19.2	15	115
120					27.9	28.7	23.9	18.5				29.1	29.6	24	19.1	14.8	120
125					25.4	27.2	23.6	18.4				25.5	29.2	24	19	14.7	125
130					22.9	25.4	23.4	18.2				20.4	28.1	23.7	18.9	14.6	130
135					20.4	23.5	23.1	17.9					26	23.4	18.8	14.5	135
140					17.8	21.7	22.4	17.7					23.7	23.1	18.6	14.4	140
145						19.9	21	17.5					21.3	22.7	18.4	14.3	145
150						18.2	19.7	17.3					18.8	22	18.1	14.2	150
155						16.4	18.3	17.1						20.5	17.8	14.1	155
160						14.7	17	16.9						18.8	17.6	13.9	160
165							15.6	16.7						17	17.3	13.6	165
170							14.3	16.2						15	17	13.5	170
175							12.9	15.1						12.4	16.7	13.3	175
180							11.5	13.9							15.8	13.1	180
185							10	12.8							14.4	12.9	185
190							8.7	11.7							12.9	12.6	190
195								10.6							11.5	12.5	195
200								9.4								12.1	200
205								8.3								11.3	205
210								7.3								10.1	210
215								5.9								9.3	215
220																7.5	220

TAB 98185.1



75°
117 ft - 168 ft



69 ft - 207 ft



360°



143 300 lbs

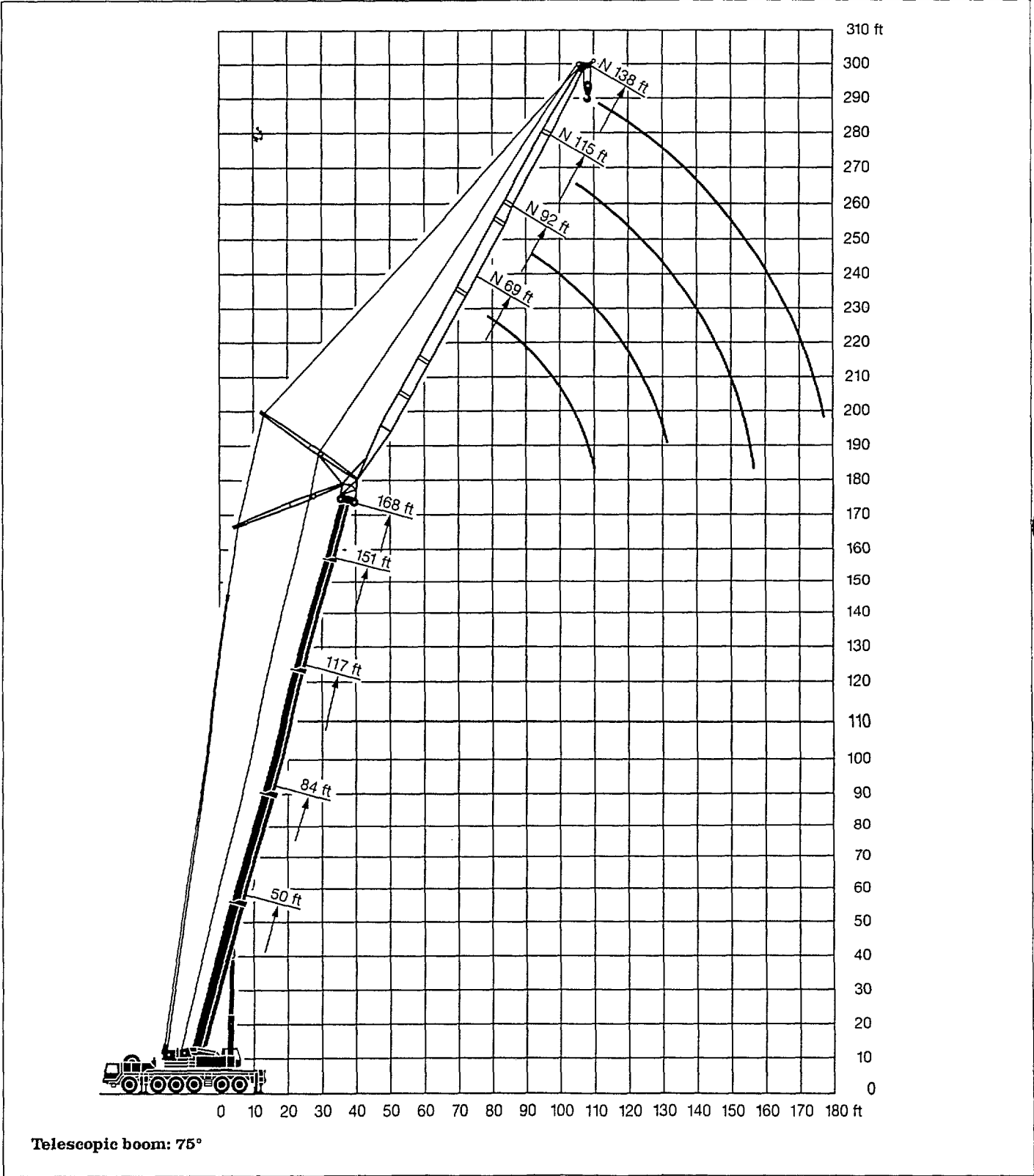


85%

ft	117 ft							151 ft							168 ft				ft
	69 ft	92 ft	115 ft	138 ft	161 ft	184 ft	207 ft	69 ft	92 ft	115 ft	138 ft	161 ft	184 ft	69 ft	92 ft	115 ft	138 ft		
70	43.7							24.3										70	
75	43.5	35.9						24.2						17.3				75	
80	43.3	35.8						24.1						16.8				80	
85	43.1	35.6						23.3	18.8					16.4				85	
90	40.6	35.5	27.9					22.6	18.7					15.9	12.1			90	
95		35.3	27.8	22.6				21.8	18.6	13.9				15.5	11.7			95	
100		34.7	27.7	22.6				18.5	13.8	10.5				15	11.3	7.7		100	
105		33.2	27.5	22.5	18.1			17.9	13.8	10.5				14.5	11	7.6		105	
110		31.6	27.4	22.4	18			17.2	13.7	10.4				10.6	7.4	5.6		110	
115		29.6	27.3	22.4	18	13.9		16.6	13.6	10.4	7.5			10.3	7.2	5.6		115	
120			26.8	22.3	17.9	13.9		16	13.6	10.4	7.4	5.4		9.9	7.1	5.6		120	
125			25.9	22.2	17.9	13.8	10.4	15.4	13.5	10.3	7.4	5.3		9.5	6.9	5.6		125	
130			24.9	22.1	17.9	13.8	10.4		13	10.3	7.4	5.3			6.7	5.5		130	
135			23.6	21.8	17.8	13.7	10.4		12.4	10.2	7.3	5.3			6.5	5.5		135	
140				21.4	17.7	13.7	10.3		11.8	10.1	7.3	5.3			6.4	5.5		140	
145				21	17.5	13.6	10.3		11.1	9.7	7.3	5.3			6.2	5.3		145	
150				20.3	17.3	13.6	10.2		9	7.3	5.3	5.3			6.1	5.1		150	
155				19.5	17.1	13.3	10.2			7.3	5.3	5.3						155	
160				18.2	16.8	13	10.2			8.2	7.1	5.2					4.9	160	
165					16.3	12.6	10.1			7.4	6.9	5.2					4.8	165	
170					15.8	12.4	9.9			6.7	6.7	5.2					4.6	170	
175					15.3	12.1	9.8			5.9	6.5	5					4.4	175	
180					14.6	11.8	9.6				6.2	4.8						180	
185						11.5	9.4				5.9	4.6						185	
190						11.3	9.3				5.6	4.4						190	
195						11	9.1				5.3	4.2						195	
200							10.7	8.9										200	
205							10.2	8.7										205	
210								8.6										210	
215								8.4										215	
220								8.1										220	
225								7.8										225	

Lifting heights.

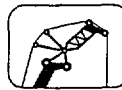
Luffing lattice jib.



Lifting capacities at the luffing lattice jib.



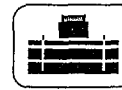
68°
50 ft - 84 ft



57 ft - 207 ft



360°

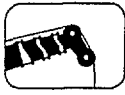


143 300 lbs

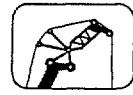


85%

ft	50 ft							84 ft							ft		
	57 ft	69 ft	92 ft	115 ft	138 ft	161 ft	184 ft	207 ft	57 ft	69 ft	92 ft	115 ft	138 ft	161 ft		184 ft	207 ft
55	87.5																55
60	81	80.5															60
65	73	75.5															65
70	57.5	68.5							59								70
75		60	61.5						55.6	55.2							75
80			57.4	48.3					53	52							80
85			51.7	48.3					51.7	49.3							85
90			46.3	47.5						47.1	45.9						90
95			41.1	45.2	37.5						43.6						95
100			35.5	41.9	37.2						41.5	39.4					100
105				38.4	36.4	29.5					39.7	38.4	30.8				105
110				35	35.8	29.5					38.3	36.7	30.8				110
115				31.6	34.4	29.1					34.3	35.1	30.4				115
120				28.1	32.4	28.5	23.7					33.7	29.8	24			120
125					30.1	28.1	23.4					32.3	29.2	24			125
130					27.7	27.7	23.1					31	28.6	23.5			130
135					25.3	26.6	22.7	17.7				27.9	28	23.1	19.1		135
140					23	25.1	22.4	17.4					27.2	22.8	18.9		140
145					20.5	23.4	22.1	17.1					26.1	22.5	18.6	14.3	145
150					17.3	21.7	21.8	16.9					25	22.1	18.3	14.3	150
155						20	20.9	16.7					23	21.8	18	14.1	155
160						18.3	19.7	16.5					20.4	21.4	17.7	13.8	160
165						16.6	18.5	16.4						21	17.4	13.6	165
170						14.6	17.1	16.2						20.1	17.1	13.3	170
175							15.9	16						18.6	16.7	13	175
180							14.7	15.7						16.7	16.4	12.7	180
185							13.3	15.2							16.1	12.5	185
190							12	14.2							15.8	12.2	190
195							10.5	13.2							15.4	11.9	195
200								12.2							14.4	11.7	200
205								11.1							12.9	11.4	205
210								9.9								11.1	210
215								8.6								10.8	215
220								7.2								10.6	220
225																10	225
230																9	230
235																7.6	235



68°
117 ft - 168 ft



69 ft - 207 ft



360°



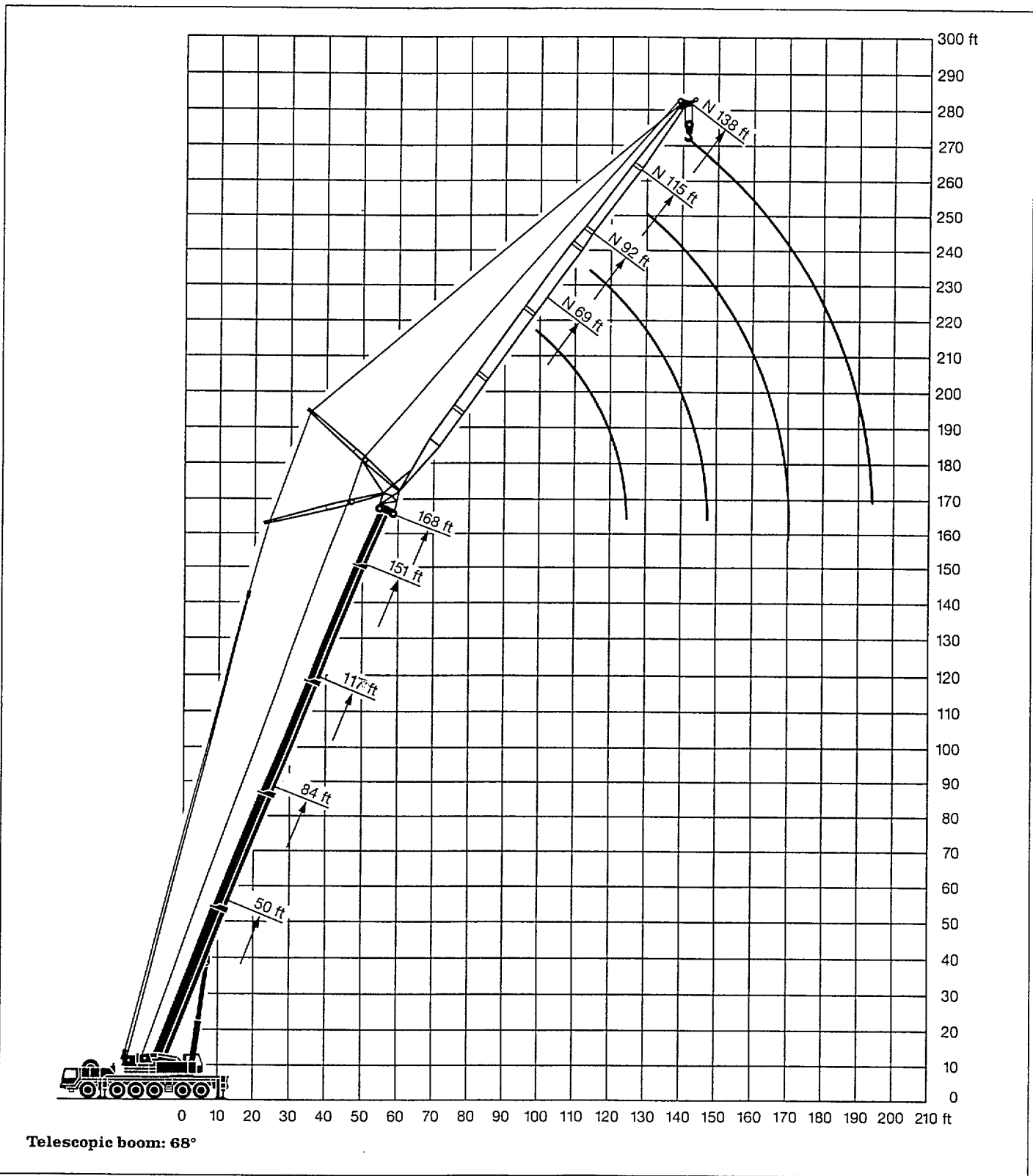
143 300 lbs

85%

ft	117 ft							151 ft							168 ft				ft
	69 ft	92 ft	115 ft	138 ft	161 ft	184 ft	207 ft	69 ft	92 ft	115 ft	138 ft	161 ft	184 ft	69 ft	92 ft	115 ft	138 ft		
90	38.8																	90	
95	36.2																	95	
100	33.6	33.2																100	
105	31	31.6						22										105	
110	28.5	30						20.8										110	
115		28.4	27.1					19.6						15				115	
120		26.9	26.5					18.4	17.2					14.2				120	
125		25.3	24.8	22.3					16.3					13.5	11.4			125	
130		23.7	23.3	22.3					15.4					12.7	10.9			130	
135			21.9	21.8					14.6	13.2					10.4			135	
140			20.6	21.2	17.7				13.9	12.5					10	7.6		140	
145			19.5	20.4	17.4				13.1	11.8	10.2				9.5	7.3		145	
150			18.6	19.5	17.1				12.5	11.1	9.3				9	7		150	
155			17.9	18.6	16.8	13.4				10.6	8.6	7.4			8.5	6.7	5.4	155	
160				17.7	16.2	12.9				10	7.9	7.2				6.4	5.2	160	
165				16.9	15.4	12.4	10.1			9.6	7.2	6.8	5.5			6.1	5	165	
170				16	14.6	11.9	9.9			9.2	6.6	6.4	5.5			5.8	4.8	170	
175				15.1	13.8	11.5	9.6				6.2	6.1	5.2			5.5	4.5	175	
180					13.1	11	9.4				5.8	5.8	4.8				4.3	180	
185					12.5	10.6	9.1				5.5	5.5	4.5				4.1	185	
190					12	10.2	8.9				5.3	5.2	4.1				3.9	190	
195					11.6	9.8	8.6				5.2	4.9	3.8				3.7	195	
200					11.3	9.4	8.3					4.7	3.5				3.4	200	
205						9	8					4.5	3.2					205	
210						8.7	7.7					4.4	2.9					210	
215						8.4	7.4					4.3	2.7					215	
220						8.2	7.1						2.4					220	
225							6.9											225	
230							6.6											230	
235							6.3											235	
240							6											240	
245							5.7											245	

Lifting heights.

Luffing lattice jib.



Weights.

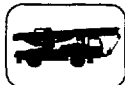







Axle	1	2	3	4	5	6	Total weight
lbs	26 500	26 500	26 500	26 500	26 500	26 500	159 000








Load (kips) ¹⁾	No. of sheaves	No. of lines	Weight lbs
495	12	24	5950
370	9	17	5290
300	7	15	3240
220	5	10	2755
150	3	7	2095
66	1	3	1675
22	-	1	860

Working speeds.



	1	2	3	4	5	R	
							
	9.3	14.9	23	34.1	47.2	8.7	-
	5	8.7	13.7	19.9	27.3	4.7	40 %
	16.00 R 25						



Drive	infinitely variable	Rope diameter / Rope length	Max. single line pull
	0 - 460 ft/min single line	¹ / ₁₂ " / 1312'	11 220 lbs
	0 - 460 ft/min single line	¹ / ₁₂ " / 1148'	11 220 lbs
	0 - 1.6 rpm		
	approx. 70 seconds to reach 83° boom angle		
	approx. 450 seconds for boom extension from 50 ft - 197 ft		

Crane carrier.

Frame:	Liebherr designed and manufactured, box type, torsion resistant, all-welded construction made of high-tensile structural steel.
Outriggers:	4 sliding beams with hydraulic extension cylinders and hydraulic support pad jacks. Front outriggers mounted between axles 1 and 2, rear outriggers at rear of truck chassis.
Engine:	Diesel, 8 cylinder, watercooled, make Liebherr, type D 9408 TI-E, output 400 kW DIN (544 HP) at 2100 rpm, max. torque 1643 lbs-ft at 1200 rpm. Fuel tank capacity: 132 gallons.
Transmission:	Allison, type CLBT 755, automatic transmission with torque converter and hydrodynamic retarder brake. 5 forward speeds, 1 reverse. Transfer case with differential and off-road range.
Axles:	Heavy duty crane truck axles, all 6 axles sprung. Axles 1 to 3, 5 and 6 steered. Axles 1, 5 and 6 are planetary axles, intermediate differential at axle 5, all driven axles with transverse differential.
Cardan shafts:	All cardan shafts with 70° diagonal tothing.
Suspension:	All axles with hydropneumatic suspension and automatic levelling. Load equalization between axle pairs 1 + 2, 3 + 4 and 5 + 6. Axles can be locked hydraulically.
Tyres:	12 tyres, all axles with single tyres. Tyre size: 16.00 R 25.
Steering:	ZF semi-integral power steering, dual circuit system, with hydraulic servo system and auxiliary pump circuit.
Brakes:	Service brake: Servo-air brakes acting on all wheels, dual circuit system. Hand brake: Spring loaded, acting on all wheels of axles 2 to 6.
Operator's cab:	Spacious cab of galvanized sheet steel on resilient mountings, safety glass windows, standardized controls and instruments.
Electrical system:	24 V DC, 2 batteries, lighting according to countries' regulations.

Crane superstructure.

Frame:	Liebherr-made torsion resistant, welded construction of high-tensile steel. Linked to crane carrier by a triple roller slewing ring for 360° continuous rotation.
Crane engine:	Diesel, 6 cylinder, watercooled, make Liebherr, type D 926 T-E, output 170 kW DIN (231 HP) at 1800 rpm, max. torque 751 lbs-ft at 1200 rpm. Fuel tank capacity: 66 gallons.
Crane drive:	Diesel-hydraulic, with 3 axial piston swivelling pumps with servo control and automatic output regulation.
Crane control:	By 2 self-centering control levers (joy-sticks).
Hoist gear:	Axial piston variable displacement motor. Hoist drum with integrated planetary gear and spring-loaded static brake.
Luffing gear:	1 differential hydraulic ram with nonreturn valve.
Slewing gear:	Hydraulic motor, planetary gear, slewing pinion and spring loaded brake.
Crane cab:	Galvanized all-steel construction, safety glazing, operator's seat with comfortable armrest integrated control elements, standardized controls and instruments.
Safety devices:	LICCON safe load indicator, hoist limit switch, safety valves against rupture of pipes and hoses.
Telescopic boom:	1 base section and 4 telescopic sections. Individual hydraulic extension of all sections. Telescoping ram with boom section interlocking device and display of the extended conditions. Boom length: 50 ft - 197 ft.
Central lubricating system:	Roller bearing slewing race, boom bearing, luffing ram bearings and winch bearings are lubricated automatically.
Electrical system:	24 V DC, 2 batteries.

Complementary equipment.

Lattice jibs:	Fly jib 46 ft - 138 ft, luffing jib 69 ft - 207 ft.
2nd hoist gear:	For 2-hook operation or luffing of lattice jib.
Drive 12 x 8:	Axle 2 additionally driven.

Further equipment available on request.