

QY100K TRUCK CRANE TECHNICAL SPECIFICATION

Total rated lifting load for boom (Table 1)

unit□ton

19.2t counterweight 360°swing on full-extend outriggers									
Working radius □m□	Main boom length(m)								
	12.8	17.2	21.6	26	30.4	34.8	39.2	43.6	48
3	100	80							
4	88	70	61						
5	70	61	54.3	42	40				
6	57	54	48.7	42	36.5	31.1			
7	47	47.5	44.1	38.6	33.5	29	24.5		
8	40.5	40	40.2	35.3	31.1	27.2	23.3	19.3	
9	34.5	35	35	32.3	28.7	25.4	21.8	18.4	14
10	30	30	30	29.9	26.6	23.6	20.6	17.5	13.4
12		23	22.8	24.1	23.3	20.9	18.5	15.7	11.6
14		16.6	16.4	17.7	18.6	18.5	16.4	14.2	11.3
16			12.2	13.4	14.2	14.9	14.9	13	10.1
18			9.2	10.4	11.2	11.8	12.3	11.6	9.2
20				8.1	8.9	9.5	10	10.2	8.3
22				6.3	7.1	7.7	8.2	8.4	7.7
24					5.7	6.2	6.8	7.	7.1
26					4.5	5.1	5.7	5.8	6.1
28						4.6	4.7	4.8	5.1
30						3.3	3.9	4.0	4.2
32							3.2	3.3	3.5
34							2.5	2.7	2.9

因技□的不□□步，我□□法□□品性能、配置的□更有效地通知到□下，敬□□解。

36								2.1	2.4
38								1.6	1.9
40									1.5
42									1.1

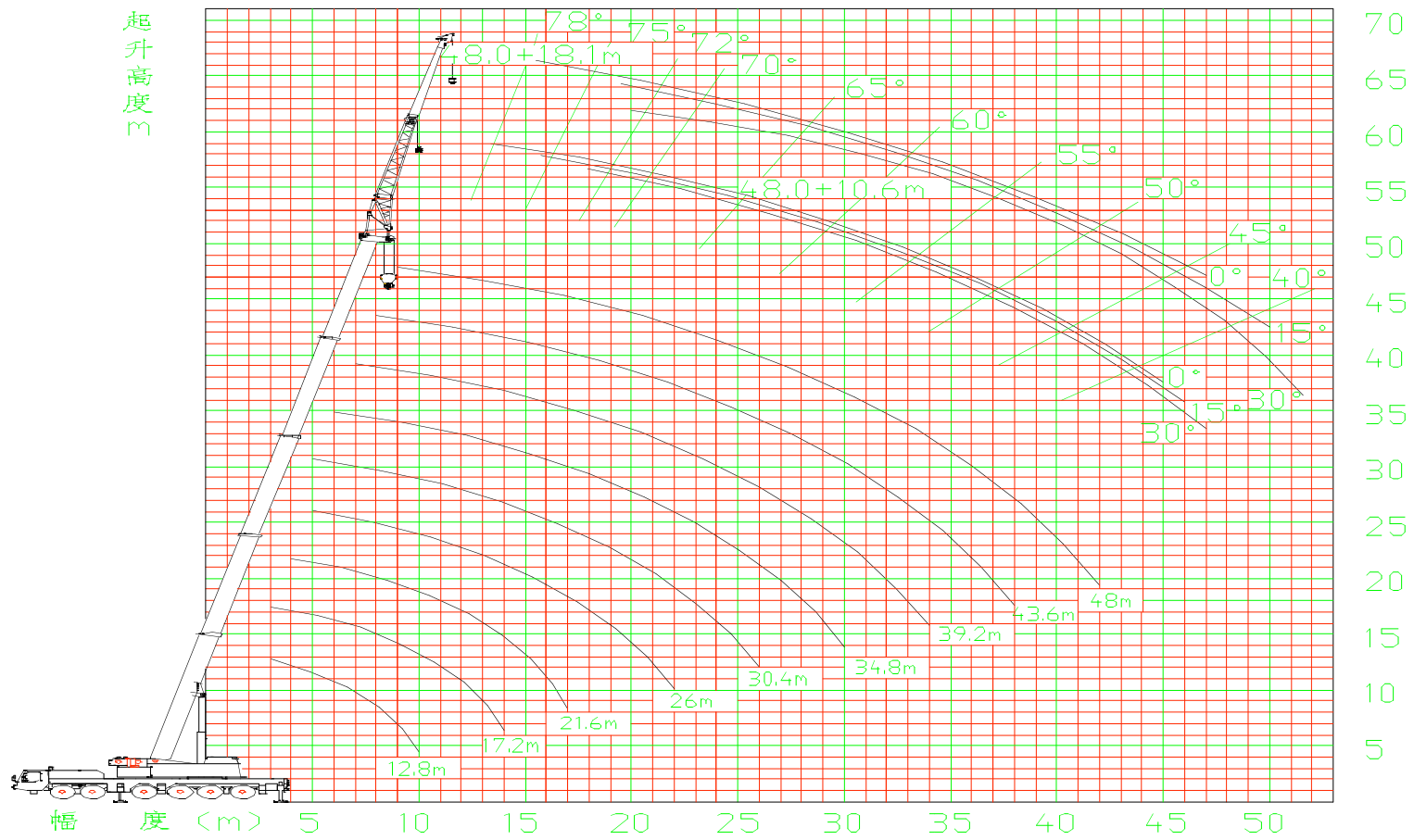
Total rated lifting load for boom (Table 2)

unit□ton

19.2t counterweight Outrigger fully extend,over side and rear												
Boom angle(°)	48m main boom											
	10.6						18.1					
	Jib0°		Jib15°		Jib30°		Jib 0°		Jib 15°		Jib 30°	
	Lifting weight	radius (m)	Lifting weight	radius (m)	Lifting weight	radius (m)	Lifting weight	radius (m)	Lifing weight	radius (m)	Lifting weight	radius (m)
78°	7	13.3	5	15.7	3.5	17.9	3.6	15.3	2.7	19.5	2.1	23.2
75°	6.5	16.3	4.3	18.7	3.4	20.7	3.3	18.6	2.5	22.7	2.0	26.3
72°	6.0	19.2	4.0	21.5	3.3	23.5	3.1	21.9	2.4	25.9	1.9	29.3
70°	5.2	21.1	3.8	23.4	3.2	25.3	2.9	24	2.3	28	1.8	31.3
65°	4.5	25.7	3.6	27.9	3.1	29.7	2.7	29.2	2.2	33	1.7	36
60°	4.1	30.1	3.4	32.2	3.0	33.8	2.5	34.2	2	37.7	1.6	40.5
55°	3.5	34.3	3.2	36.2	2.9	37.7	2.3	38.9	1.9	42.2	1.5	44.6
50°	2.5	38.1	2.3	39.9	2.2	41.2	1.8	43.2	1.6	46.2	1.4	48.3
45°	1.8	41.7	1.7	43.3	1.6	44.4	1.2	47.2	1.1	50	1	51.6
40°	1.2	44.9	1.1	46.4	1.0	47.3	--	--	--	--	--	--

因技□的不□□步，我□□法□□品性能、配置的□更有效地通知到□下，敬□□解。

QY100K Lifting Height Curve (m)



Raio X Altura

因技術的不斷進步，我們無法將產品性能、配置的更新更有效地通知到閣下，敬請諒解。