



AC40 SERIES



FOR NEW EQUIPMENT SALES, CALL  
**866.966.2969**  
TO SPEAK WITH AN ALTEC REPRESENTATIVE  
or visit us online at [altec.com](http://altec.com)

 **Altec**<sup>®</sup>  
TELESCOPIC CRANE

# AC40 SERIES

## STANDARD FEATURES

- Altec LMAP (Load Moment & Area Protection) System
  - » Rated Capacity Limiter
  - » Displays: Boom Length, Boom Angle, Load on Hook, Percent of Rated Capacity
  - » Operator Defined Audible Alarm Set-Points for Boom Angle, Length and Rotational Position
- Dual Entry 20° Tilt Cab with Heater and A/C
- Outrigger Boom Interlock System
- Outrigger Motion Alarm
- Winch Drum Rotation Indicator
- Anti-Two Block Device
- Rotation Resistant Wire Rope
- Winch Control at Load Hook Stow Point
- Hydraulic Oil Cooling System
- Front Bumper Outrigger

## OPTIONS

- ASME B30.23 Personnel Lifting Package
  - » 2-Man, Steel Platform
    - Fixed, 362.8 kg (800 lb) Capacity
    - Rotating, 544.3 kg (1,200 lb) Capacity
  - » Radio Remote Controls
  - » Fall Protection
- ASME B30.23 Compliant Test Weight Package
- 1-Piece 9.4 m (31 ft) Jib
- 2-Piece 16.8 m (55 ft) Jib, 9.4 m (31 ft) Retracted
- Auxiliary Hoist
- Glide Swing
- Emergency 12V DC Lowering System

## CRANE SPECIFICATIONS

### AC40-103S

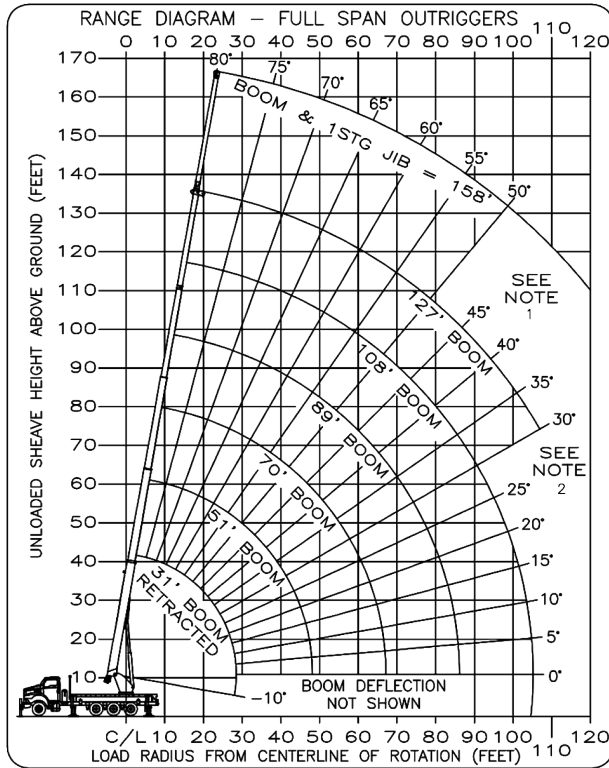
Maximum Lift Capacity	36,287 kg (80,000 lb)
Boom Length (4-Section)	31.4 m (103 ft)
Powered Sheave Height	34.4 m (112 ft)
Maximum Sheave Height	51.2 m (168 ft)
Stowed Travel Height	3.9 m (12.9 ft)
Vehicle Travel Length	11.6 m (38 ft)
3 Position Out-and-Down Outriggers	
Full Span	7.3 m (24 ft)
Mid Span	4.8 m (15.8 ft)
Short Span	2.5 m (8.17 ft)
Control System	Pilot-Operated, Hydraulic
ASME B30.5 Compliant	

### AC40-127S

Maximum Lift Capacity	36,287 kg (80,000 lb)
Boom Length (5-Section)	38.7 m (127 ft)
Powered Sheave Height	41.8 m (137 ft)
Maximum Sheave Height	58.5 m (192 ft)
Stowed Travel Height	3.9 m (12.9 ft)
Vehicle Travel Length	11.6 m (38 ft)
3 Position Out-and-Down Outriggers	
Full Span	7.3 m (24 ft)
Mid Span	4.8 m (15.8 ft)
Short Span	2.5 m (8.17 ft)
Control System	Pilot-Operated, Hydraulic
ASME B30.5 Compliant	



# LOAD CHART - FULL SPAN OUTRIGGERS



BOOM LOAD CAPACITIES IN LBS. WITH FULL SPAN OUTRIGGERS (24 FT)

LOAD RADIUS (FT)	31 FT BOOM	51 FT BOOM	70 FT BOOM	89 FT BOOM	108 FT BOOM	127 FT BOOM
	LBS	LBS	LBS	LBS	LBS	LBS
6	73	80000				
8	69	62600				
10	65	54000	76	35000		
12	60	47500	74	33000		
15	56	39500	70	31500	76	30000
20	45	28000	64	26450	72	23000
25	28	21000	57	21000	68	20500
30			50	17250	63	15650
35			42	13800	58	13700
40			33	11400	53	11000
45			20	9200	47	9950
50					41	8100
55					34	6700
60					26	5500
65					14	4400
70						
75					30	3050
80					23	2450
85					9	1900
90						
95					32	1600
100					26	1150
105					22	850
110						
	0	15500	0	6450	0	2900
		500		350		250
					0	1450
					0	700
						150

NOTE: RATINGS ABOVE THE HEAVY LINE ARE BASED ON STRUCTURAL COMPETENCE AND NOT ON MACHINE STABILITY

JIB LOAD CAPACITIES (LBS) FOR ALL BOOM LENGTHS  
JIB CAPACITIES FOR FULL SPAN OUTRIGGERS (24 FT)

LOADED BOOM ANGLE	50° *	55°	60°	65°	70°	75°	80°
1 STAGE 31 FT JIB	700	1250	1900	2600	3100	3400	3900

\* DO NOT OPERATE JIB BELOW THIS ANGLE UNLESS BOOM IS FULLY RETRACTED. SEE NOTE 1.

AREA OF OPERATION

360° CAPACITY WORKING AREA WITH FULL SPAN AND FRONT BUMPER OUTRIGGERS

DEDUCTIONS FROM RATED LOADS FOR HANDLING DEVICES

OVERHAUL BALL: 230 LBS

1-SHEAVE LOADBLOCK: 360 LBS

2-SHEAVE LOADBLOCK: 500 LBS

3-SHEAVE LOADBLOCK: 600 LBS

SEE NOTE 2

30' BOOM CAPACITIES

STOWED JIB LOAD DEDUCTIONS

970276628 B (SHEET 1)

**Note 1:** When jib is erected, boom must be fully retracted before lowering below minimum boom with jib angles. Retracted boom with jib has no lifting capacity below a 50 degree angle with full span outriggers and below a 65 degree angle not shown on jib load rating chart.

**Note 2:** Do not lower boom into this area, instability may occur. Hydraulic pressure may not allow raising the boom without retracting boom first.

Charts published herein are intended to be a guide only and should not be construed to warrant application for lifting purposes. Consult supplied operation manual for further details.

## LOAD MOMENT AND AREA PROTECTION

The ability to provide vital data to operators, continuously monitor crane operation and send alerts of potential overloads, while maximizing crane work capacity, is invaluable. The LMAP system offers customers and operators easy operation, fast calibration and reliable technology.



## DUAL ENTRY CAB

Altec's dual entry cab provides safe access/egress throughout the entire range of rotation. The 20 degree tilt feature maximizes the viewing spectrum on the job site.



## LOWER WINCH CONTROL

The lower winch control helps prevent boom damage by reducing the flow pressure to the winch during stowage. The operator can control the load block or ball while winching up or down during set up and stowage without the need to access the upper control station. Reducing slip/trip/fall hazard exposure.





**866-966-2969**  
**sales@altec.com**

AIOSAC38127S-1214-v1-r1

210 Inverness Center Drive  
Birmingham, AL 35242  
Fax 205.449.4774  
www.altec.com

For more complete information on Altec products and services, visit us on the web at [www.altec.com](http://www.altec.com).

© 2014 Altec Inc  
All Rights Reserved

Material and specifications are subject to change without notice. Featured units in photos may include optional features. Please contact an Altec representative for all available options. Charts published herein are intended to be a guide only and should not be construed to warrant application for lifting purposes. Consult supplied operation manual for further details.

Altec® and the Altec logo are registered trademarks of Altec Inc in the United States and various other countries and may not be used without permission.

