

## Worldwide offices

### International

#### TADANO Ltd.

International Division  
4-12, Kamezawa 2-chome  
Sumida-Ku, Tokyo 130-0014, Japan  
Phone: +81-3-3621-7750  
Fax: +81-3-3621-7785  
E-mail: tdnihq@tadano.co.jp

#### TADANO FAUN GmbH

Faunberg 2  
91207 Lauf a. d. Pegnitz  
Germany  
Phone: +49-9123-955-0  
Fax: +49-9123-3085  
E-mail: info@tadanofaun.de

#### TADANO Oceania Pty Ltd.

4/12 Archimedes Street Darra,  
Queensland 4076, Australia  
Phone: +61-7-3120-8750  
Fax: +61-7-3120-8760  
E-mail: pshelton@tadano.com.au

#### TADANO Ltd. Middle East Representative Office

P.O.Box 18302, LOB15-323  
Jebel Ali Free Zone, Dubai, UAE  
Phone: +971-4-887-1353  
Fax: +971-4-887-1703  
E-mail: tadano@tadano.ae

#### TADANO Ltd. Beijing Office

Jing Guang Centre, Room 2905  
Hu Jia Lou, Chao Yang Qu  
Beijing, China  
Phone: +86-10-6597-3210  
Fax: +86-10-6597-3220  
E-mail: beijing@tadano.co.jp

### North America

#### TADANO America Corporation

4242 West Greens Road  
Houston, TX 77066, USA  
Phone: +1-281-869-0030  
Fax: +1-281-869-0040  
E-mail: sales@tadano-cranes.com

#### TADANO South China Co. Ltd.

Room 1803, 18/F Seaview Commercial  
Building 21-24 Connaught Road West  
Hong Kong  
Phone: +852-2544-9310  
Fax: +852-2541-5828  
E-mail: hiwa@tadanosc.com

#### TADANO Korea Co. Ltd.

Dangok Bldg 2F, #642-7, Bokjeong-dong  
Sujeong-gu, Seongnam-si, Gyeonggi-do  
461-830, Korea  
Phone: +82-2-714-1600  
Fax: +82-2-3274-1304  
E-mail: tadano@korea.com

#### TADANO Asia Pte Ltd.

11 Tuas View Crescent  
Multico Building  
Singapore 637643  
Phone: +65-6863-6901  
Fax: +65-6863-6902  
E-mail: Tdn-crane@tadanoasia.com

#### Taiwan TADANO Ltd.

16F, No. 39, Sec. 2 Twng-Hwa S. Rd.  
Taipei  
Taiwan  
Phone: +886-2-2754-0252  
Fax: +886-2-2709-2086  
E-mail: tadano@ms18.hinet.net

#### TADANO MANTIS Corporation

1705 Columbia Avenue, Suite 200  
Franklin, Tennessee USA 37065  
Phone: +1-800-272-3325  
Fax: +1-615-790-6803  
E-mail: sales@mantisranes.com

# ALL-TERRAIN ATF 70G-4



Lift Adjuster  
Option

For detailed information about our International Distributor and Service Network, please refer to our homepages.  
[www.tadano.co.jp](http://www.tadano.co.jp) + [www.tadanoamerica.com](http://www.tadanoamerica.com) + [www.mantisranes.com](http://www.mantisranes.com) + [www.tadanofaun.de](http://www.tadanofaun.de)

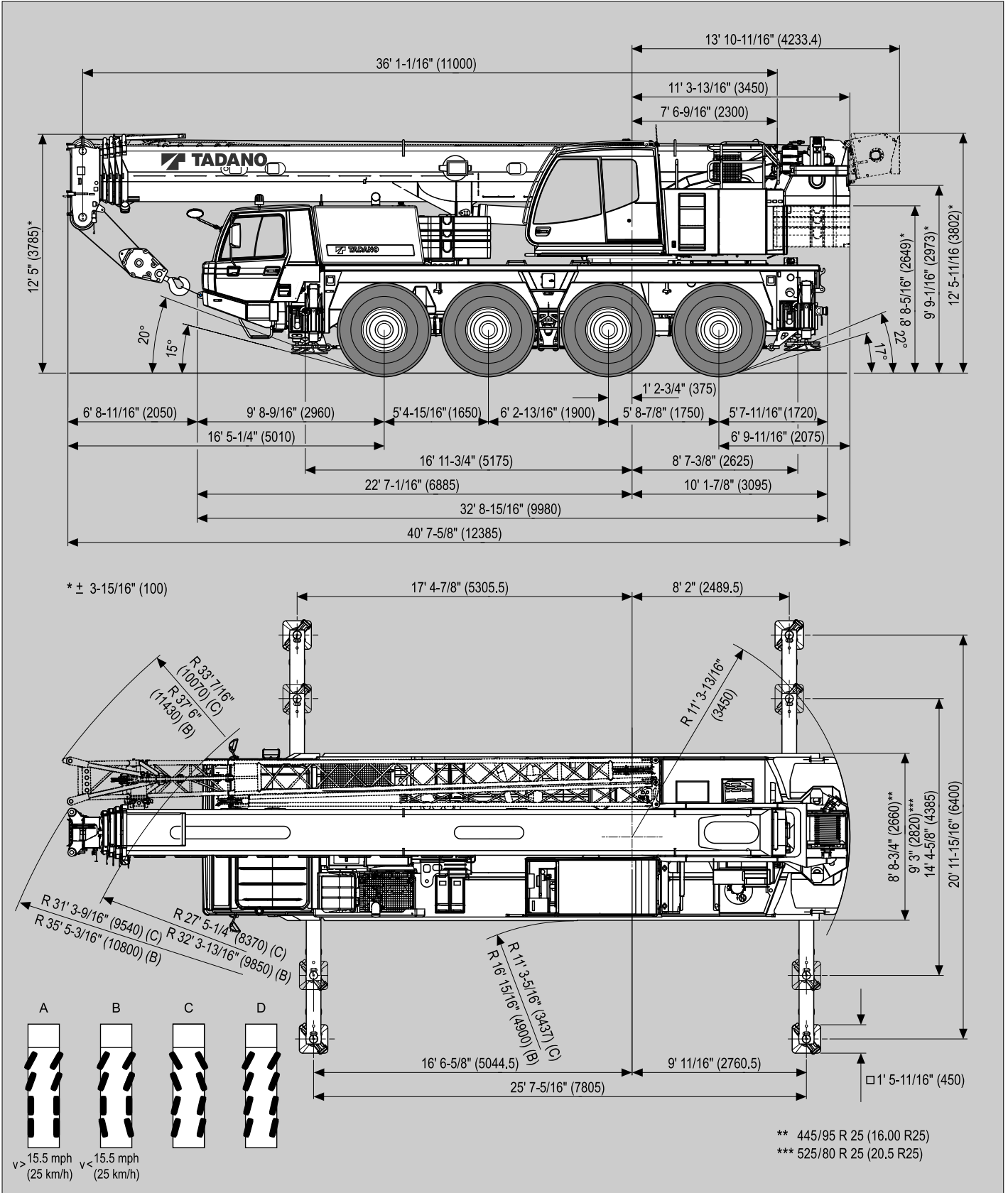
#### Publisher:

TADANO FAUN GmbH  
P.O.Box 10 02 64  
91205 Lauf  
Germany



Dimensions (ft, mm) / Dimensiones (ft, mm)

**445/95 R 25**  
(16.00 R 25)



## Weights / Working speeds / Pesos / Velocidades de trabajo

	Axle Eje	1	2	3	4	Total weight Peso total
	(t)	12	12	12	12	48*

\* Incl. 11.9 t counterweight, 9 m / 16 m boom extension, 32 t hook block, 6 t swivel hook, drive 8 x 6, tyres 445/95 R 25 (16.00 R 25).

\* Incl. contrapeso de 11,9 t, 9 m / 16 m plumin, 32 t gancho, 6 t gancho de bola, tracción 8 x 6, neumáticos 445/95 R 25 (16.00 R 25).

	Lifting capacity Capacidad de elevación	Sheaves Poleas	Parts of line Ramales de cable	Weight Peso
	50 t*	5	11	1,047.2 lbs
32 t*	3	7	661.4 lbs	
32 t	3	7	661.4 lbs	
12.5 t	1	3	374.8 lbs	
6 t	–	1	330.7 lbs	

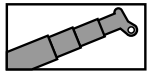
\* Rams horn  
\* Gancho doble



	1	2	3	4	5	6	7	8	9	10	11	12	R1	R2	
	445/95 (16.00) 525/80 (20.5) mph	1.9	2.5	3.1	4.3	5.6	6.8	9.3	11.8	14.9	19.3	24.2	31.1	1.9	
	3.7	5.0	6.2	8.1	9.9	12.4	16.8	21.1	27.3	35.4	44.7	52.8	3.7	5.0	30%

V+	Infinitely variable Infinitamente variable	Rope Cable	Max. single line pull Trio máximo por ramal
	0 - 426.5 ft/min 0 - 130 m/min single line ramal simple	0.63" / 672.6' 16 mm / 205 m	44 kN
	0 - 426.5 ft/min 0 - 130 m/min single line ramal simple	0.63" / 672.6' 16 mm / 205 m	44 kN
	0 - 2 min <sup>-1</sup>		
	-2° – +82° approx. 33 s aproximadamente 33 s		
	36.1 ft – 144.4 ft 11.0 m – 44.0 m approx. 230 s aproximadamente 230 s		

## Lifting capacities / Capacidades de elevación



26,235 lbs

'Taxi' Version

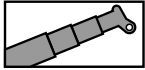
SAE

ft	36.1 ft*	36.1 ft	48.6 ft	61.4 ft	73.8 ft	86.3 ft	98.8 ft	111.5 ft	124.0 ft	136.5 ft	144.4 ft
8.2	154.3**	127.9**									
9.8	131.4**	120.2**	110.2	108.7							
11.5	120.8**	108.9	103.6	99.4	93.3						
13.1	105.4	99.2	95.7	92.4	90.4	66.1					
14.8	93.0	89.5	88.8	85.8	83.8	66.1	54.0				
16.4	83.1	81.3	81.1	79.8	78.0	66.1	51.4	41.4			
19.7	68.1	67.9	68.6	67.9	68.3	63.5	46.5	41.4	31.3		
23.0	57.5	57.3	58.0	58.0	57.8	58.2	42.3	39.0	31.3	23.8	21.2
26.2	49.4	49.4	49.8	50.5	49.8	50.0	39.5	35.9	31.3	23.8	21.2
29.5			46.1	44.3	44.5	43.2	36.8	33.1	30.4	23.8	21.2
32.8			39.2	40.1	40.6	39.5	34.6	30.6	28.4	23.8	21.2
36.1			34.6	35.1	34.8	34.2	32.6	28.7	26.7	23.8	21.2
39.4			30.2	30.9	30.6	30.0	28.7	26.7	24.9	22.7	19.8
45.9				24.5	24.3	24.3	23.6	22.9	22.0	20.5	17.2
52.5				19.6	20.1	19.8	19.2	19.2	18.7	17.9	15.2
59.1					16.8	16.8	16.1	16.3	16.1	15.4	13.4
65.6					14.6	14.1	14.3	13.7	13.7	13.0	11.7
72.2						11.9	12.1	11.7	11.5	11.0	10.4
78.7							10.4	10.1	9.7	9.3	9.0
85.3							9.3	8.8	8.2	7.7	7.7
91.9								7.5	7.1	6.6	6.6
98.4								6.4	6.2	5.3	5.3
105.0									5.1	4.6	4.6
111.5									4.4	4.0	4.0
118.1										3.1	3.1
124.7										2.4	2.4
131.2											2.0

\* Over rear / \* Sobre la parte trasera

\*\* With additional lifting equipment / \*\* Con equipo adicional

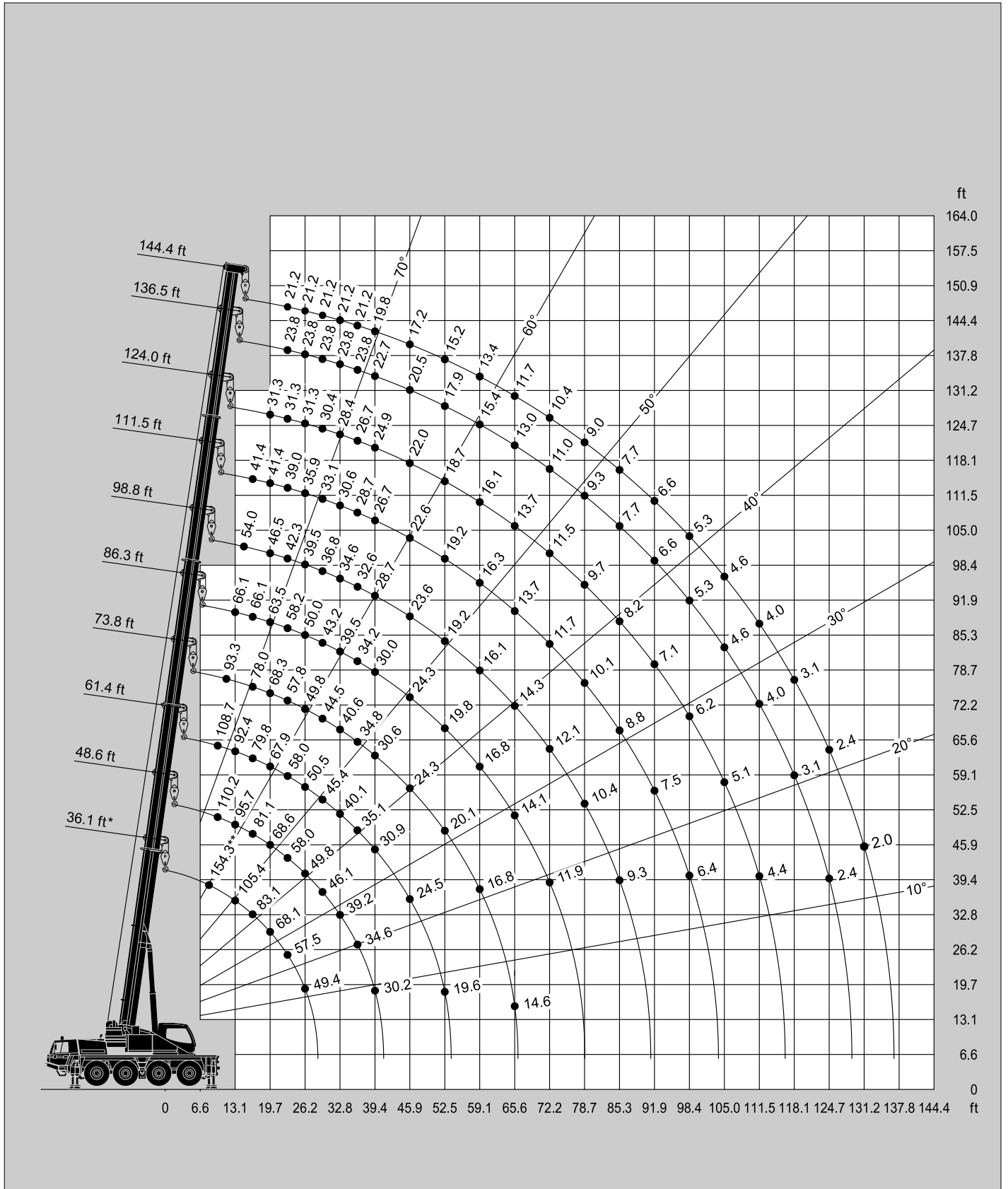




26,235 lbs

'Taxi' Version


SAE



\* Over rear / \* Sobre la parte trasera

\*\* With additional lifting equipment / \*\* Con equipo adicional

## Lifting capacities / Capacidades de elevación



26,235 lbs + 6,834 lbs Option = 33,069 lbs

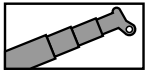
**SAE**

ft	36.1 ft*	36.1 ft	48.6 ft	61.4 ft	73.8 ft	86.3 ft	98.8 ft	111.5 ft	124.0 ft	136.5 ft	144.4 ft
8.2	154.3**	127.9**									
9.8	131.4**	120.8**									
11.5	120.8**	109.6	110.2	108.7							
13.1	108.5	100.1	95.7	92.4	90.4	66.1					
14.8	95.9	91.7	88.8	85.8	83.8	66.1	54.0				
16.4	85.8	83.3	82.9	79.8	78.0	66.1	51.4	41.4			
19.7	70.3	70.1	70.5	69.4	68.8	63.5	46.5	41.4	31.3		
23.0	59.3	59.3	60.0	60.2	59.5	58.2	42.3	39.0	31.3	23.8	21.2
26.2	51.1	51.1	51.8	51.8	51.4	52.0	39.5	35.9	31.3	23.8	21.2
29.5			45.2	45.6	45.4	45.6	36.8	33.1	30.4	23.8	21.2
32.8			40.1	40.3	41.0	40.3	34.6	30.6	28.4	23.8	21.2
36.1			37.7	37.0	38.4	37.5	32.8	28.7	26.7	23.8	21.2
39.4			32.8	33.7	33.5	32.6	30.9	26.7	24.9	22.7	19.8
45.9				26.7	26.5	25.8	24.9	23.6	22.0	20.5	17.2
52.5				21.8	21.6	21.4	20.3	19.4	19.6	18.3	15.2
59.1					18.5	18.5	17.2	17.2	16.5	16.3	13.4
65.6					15.7	15.7	15.0	15.4	14.6	14.3	11.7
72.2						13.4	13.4	13.2	13.0	12.3	10.6
78.7							11.9	11.5	11.2	10.6	9.3
85.3							10.4	9.9	9.7	9.3	8.2
91.9								8.8	8.6	7.7	7.5
98.4								7.5	7.3	6.8	6.6
105.0									6.4	5.7	5.7
111.5									5.5	4.9	4.9
118.1										4.2	4.2
124.7										1.5	3.3
131.2											2.9

\* Over rear / \* Sobre la parte trasera

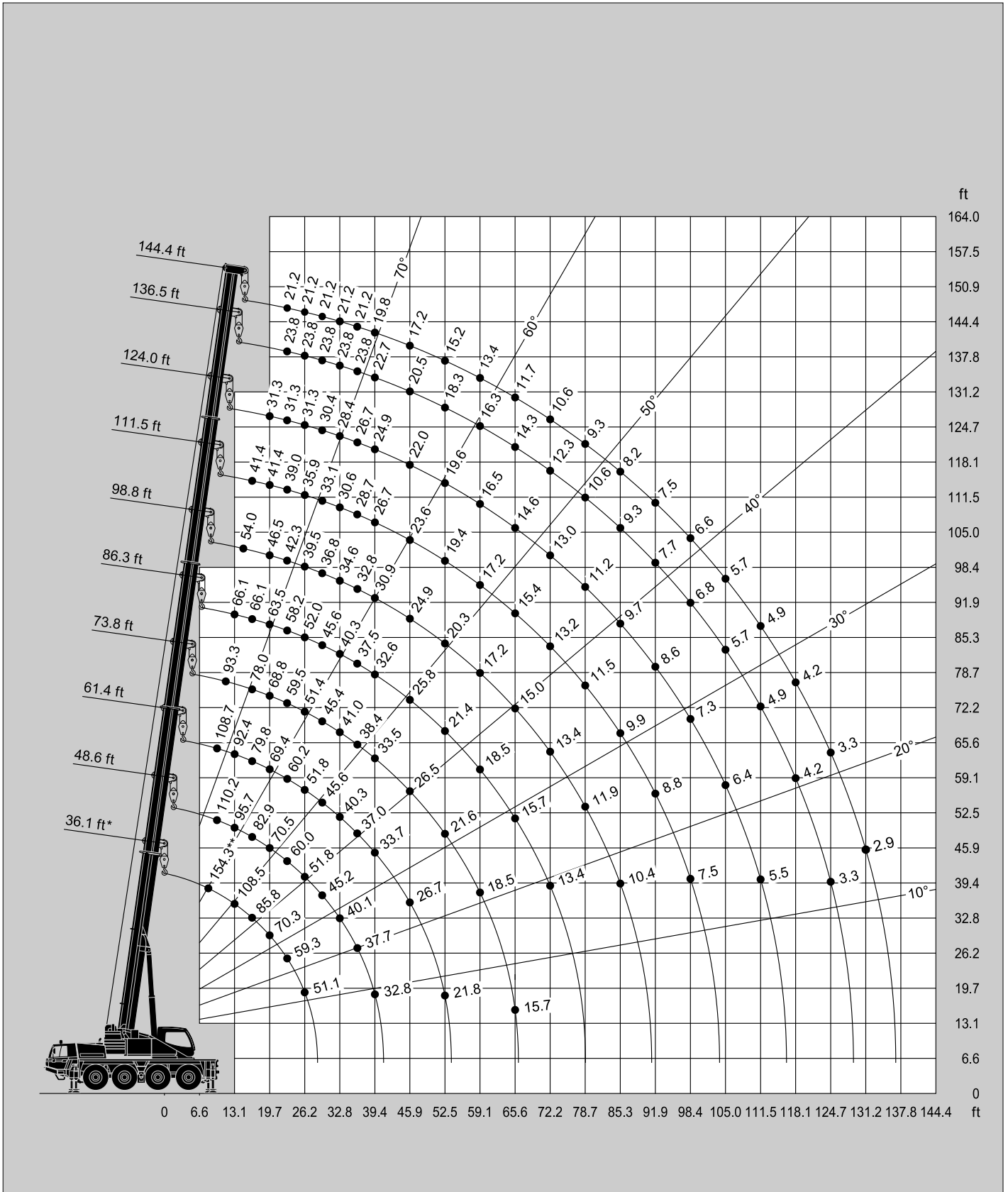
\*\* With additional lifting equipment / \*\* Con equipo adicional

Lifting heights / Alturas de elevación



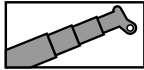
26,235 lbs + 6,834 lbs Option = 33,069 lbs

SAE



\* Over rear / \* Sobre la parte trasera  
 \*\* With additional lifting equipment / \*\* Con equipo adicional

## Lifting capacities / Capacidades de elevación



13,228 lbs

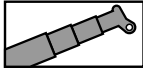
SAE

ft	36.1 ft*	36.1 ft	48.6 ft	61.4 ft	73.8 ft	86.3 ft	98.8 ft	111.5 ft	124.0 ft	136.5 ft	144.4 ft
8.2	144.2**	127.9**									
9.8	131.4**	118.2**									
11.5	112.2**	105.6	110.2	108.7							
13.1	97.4	94.1	93.9	92.2	90.4	66.1					
14.8	86.0	84.7	84.2	83.8	82.9	66.1	54.0				
16.4	76.7	76.5	76.3	75.8	74.3	66.1	51.4	41.4			
19.7	62.8	62.8	63.5	63.7	59.5	57.3	46.5	41.4	31.3		
23.0	55.3	55.3	53.6	52.2	50.9	47.2	42.3	39.0	31.3	23.8	21.2
26.2	43.7	43.7	44.5	45.6	42.8	39.9	37.9	35.7	31.3	23.8	21.2
29.5			37.3	38.1	37.9	34.0	32.8	30.4	29.8	23.8	21.2
32.8			31.1	31.7	31.7	30.9	28.4	27.1	25.8	23.8	21.2
36.1			26.2	26.9	27.3	27.6	24.9	24.9	23.6	22.5	21.2
39.4			22.5	23.1	23.6	23.8	22.5	23.4	21.4	19.8	19.6
45.9				17.9	18.5	18.3	18.5	18.1	17.9	16.1	15.9
52.5				14.1	15.0	14.8	14.8	14.6	14.1	13.7	13.7
59.1					12.1	11.9	11.9	11.7	11.2	11.0	11.0
65.6					10.1	9.9	9.9	9.7	9.3	8.8	8.8
72.2						8.2	8.2	7.7	7.5	7.1	7.1
78.7							7.1	6.6	6.2	5.5	5.5
85.3							5.7	5.3	5.1	4.4	4.4
91.9								4.4	4.2	3.3	3.3
98.4								3.7	3.3	2.6	2.6
105.0									2.6	2.0	2.0
111.5									2.0	1.5	1.5
118.1										1.1	1.1

\* Over rear / \* Sobre la parte trasera

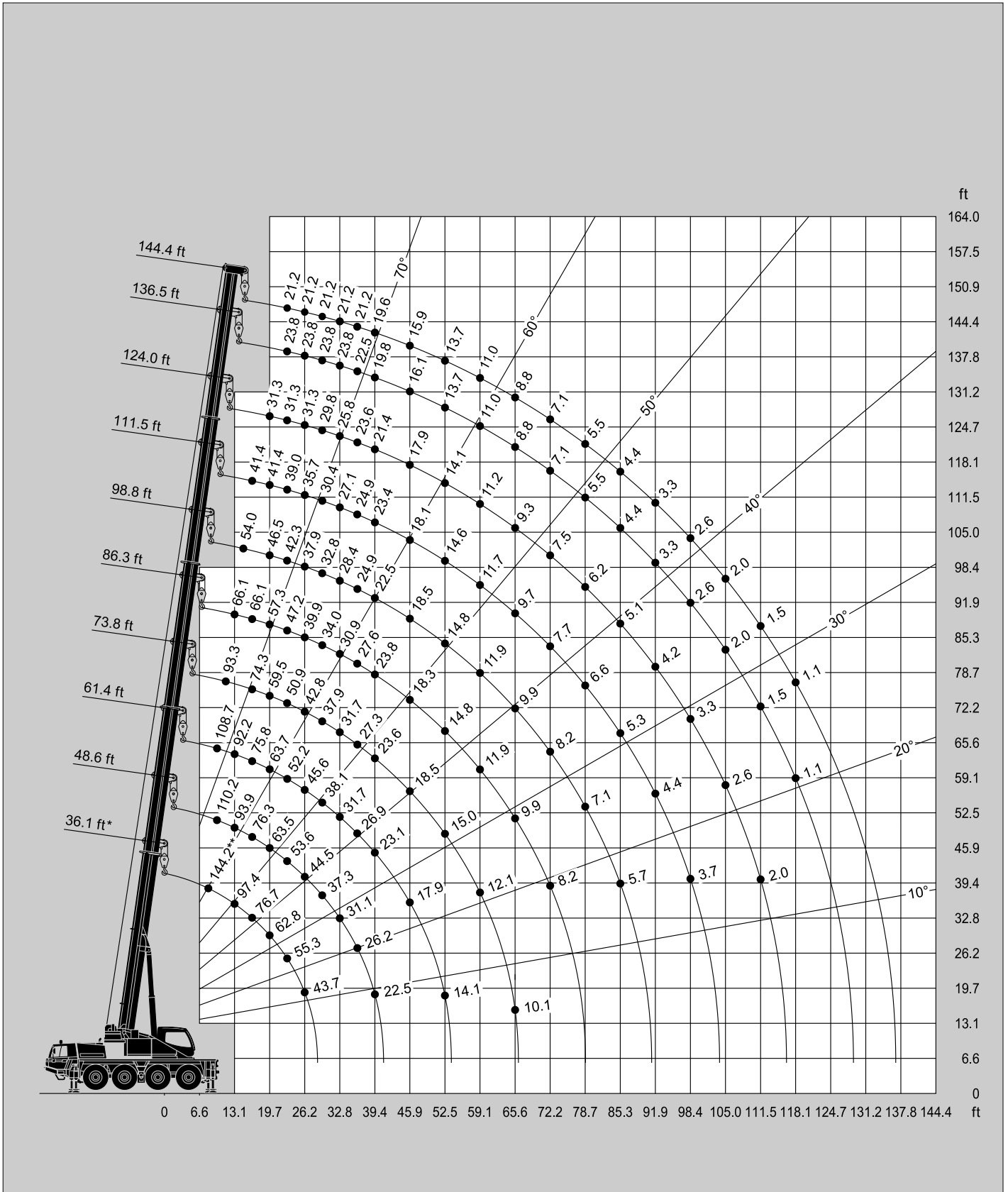
\*\* With additional lifting equipment / \*\* Con equipo adicional





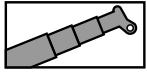
13,228 lbs


SAE



\* Over rear / \* Sobre la parte trasera  
 \*\* With additional lifting equipment / \*\* Con equipo adicional

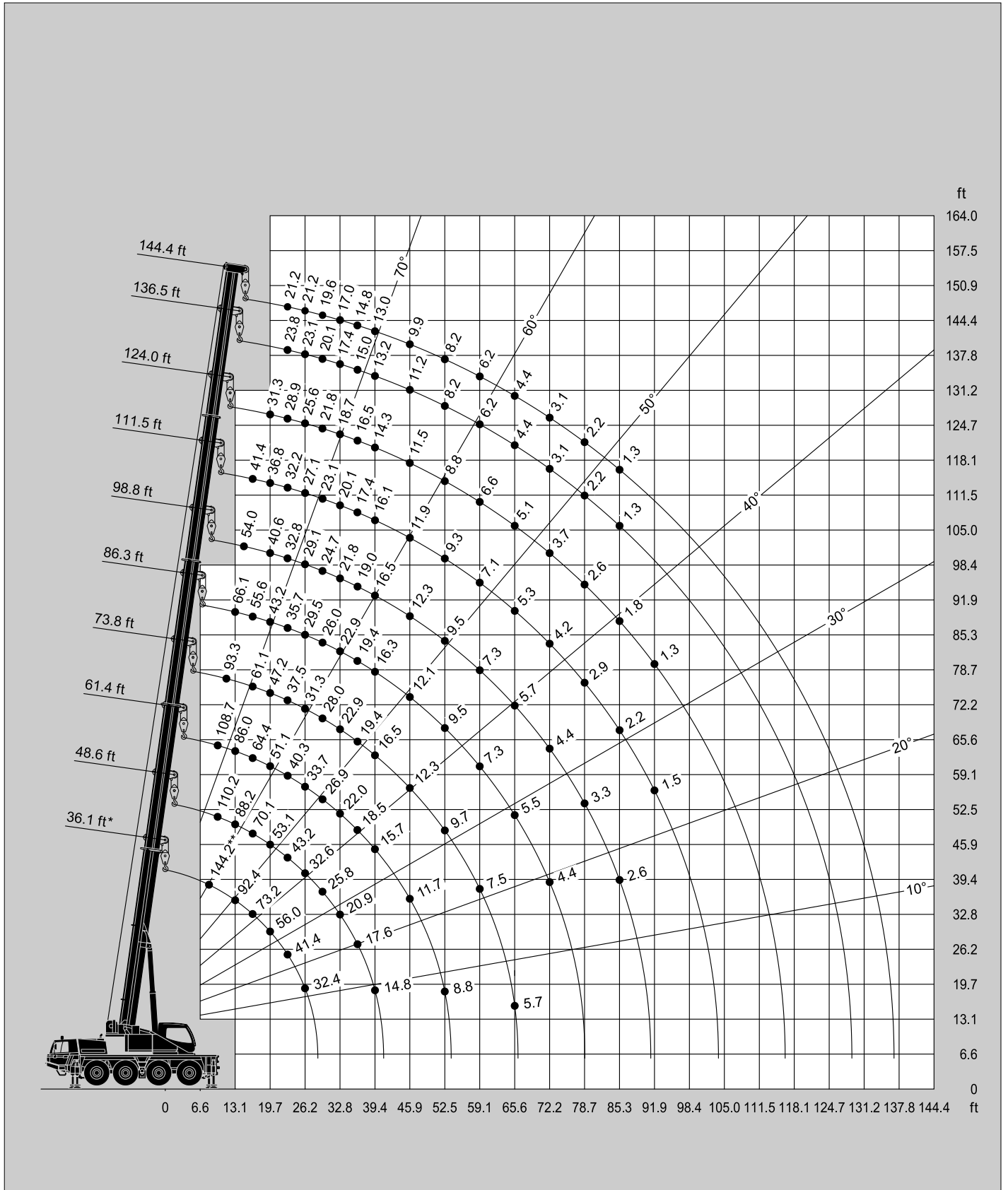
## Lifting capacities / Capacidades de elevación



 ft	36.1 ft*	36.1 ft	48.6 ft	61.4 ft	73.8 ft	86.3 ft	98.8 ft	111.5 ft	124.0 ft	136.5 ft	144.4 ft
8.2	144.2**	127.9**									
9.8	123.0**	113.8**									
11.5	105.8**	99.9	110.2	108.7							
13.1	92.4	88.4	99.6	97.7	93.3						
14.8	81.8	78.9	88.2	86.0	77.8	66.1					
16.4	73.2	70.8	78.9	73.4	69.0	63.7	54.0				
19.7	56.0	56.0	70.1	64.4	61.1	55.6	49.6	41.4			
23.0	41.4	40.8	53.1	51.1	47.2	43.2	40.6	36.8	31.3		
26.2	32.4	30.6	43.2	40.3	37.5	35.7	32.8	32.2	28.9	23.8	21.2
29.5			32.6	33.7	31.3	29.5	29.1	27.1	25.6	23.1	21.2
32.8			25.8	26.9	28.0	26.0	24.7	23.1	21.8	20.1	19.6
36.1			20.9	22.0	22.9	22.9	21.8	20.1	18.7	17.4	17.0
39.4			17.6	18.5	19.4	19.4	19.0	17.4	16.5	15.0	14.8
45.9			14.8	15.7	16.5	16.3	16.5	16.1	14.3	13.2	13.0
52.5				11.7	12.3	12.1	12.3	11.9	11.5	11.2	9.9
59.1				8.8	9.7	9.5	9.5	9.3	8.8	8.2	8.2
65.6					7.5	7.3	7.3	7.1	6.6	6.2	6.2
72.2					5.7	5.5	5.7	5.3	5.1	4.4	4.4
78.7						4.4	4.4	4.2	3.7	3.1	3.1
85.3							3.3	2.9	2.6	2.2	2.2
91.9							2.6	2.2	1.8	1.3	1.3
								1.5	1.3		

\* Over rear / \* Sobre la parte trasera

\*\* With additional lifting equipment / \*\* Con equipo adicional



\* Over rear with additional lifting equipment / \* Sobre la parte trasera con equipo adicional

## Lifting capacities / Capacidades de elevación

26,235 lbs

'Taxi' Version

SAE

ft	36.1 ft + 29.5 ft			98.8 ft + 29.5 ft			136.5 ft + 29.5 ft			144.4 ft + 29.5 ft		
	0°	20°	40°	0°	20°	40°	0°	20°	40°	0°	20°	40°
9.8	23.1*											
11.5	23.1*											
13.1	23.1*	23.1*										
14.8	23.1*	23.1*		23.1*								
16.4	23.1*	23.1*		23.1*								
19.7	23.1*	23.1*	19.6*	23.1*								
23.0	23.1*	21.8*	18.7	23.1*			13.2					
26.2	23.1*	20.7*	17.9	22.3*	17.9		13.2			11.9		
29.5	22.9*	19.6*	17.2	21.2*	17.0		13.2			11.9		
32.8	20.9*	18.7	16.5	19.8*	16.1	14.1	13.2			11.9		
36.1	19.2	18.1	15.9	18.7	15.4	13.4	13.2	11.9		11.9	11.2	
39.4	17.9	17.2	15.4	17.9	14.8	13.0	12.6	11.5		11.7	10.8	
45.9	15.7	15.9	14.8	16.1	13.7	12.1	11.5	10.8	9.7	10.8	10.1	9.5
52.5	13.9	15.0		14.8	12.8	11.5	10.6	9.9	9.3	9.9	9.5	8.8
59.1				13.2	11.9	10.8	9.7	9.5	8.6	9.3	8.8	8.4
65.6				11.9	11.2	10.4	9.0	8.8	8.2	8.4	8.4	7.9
72.2				10.4	10.6	9.9	8.4	8.2	7.7	7.9	7.7	7.5
78.7				8.6	9.3	9.5	7.9	7.7	7.5	7.3	7.3	7.1
85.3				7.1	7.7	7.9	7.1	7.3	7.1	6.4	6.6	6.6
91.9				5.7	6.4	6.6	6.4	6.6	6.6	5.7	6.0	6.0
98.4				4.9	5.3	5.3	5.1	5.5	6.2	5.1	5.3	5.3
105.0				4.2	4.4		4.4	4.6	5.1	4.2	4.6	4.9
111.5				3.3	3.3		3.3	4.0	4.2	3.3	4.0	4.2
118.1				2.6			2.9	3.1	3.3	2.6	3.1	3.3
124.7							2.2	2.4	2.6	2.2	2.4	2.6
131.2							1.8	2.0	2.0	1.8	2.0	2.0
137.8							1.3	1.5		1.3	1.5	1.5
144.4								1.1			1.1	

\* With additional lifting equipment / \* Con equipo adicional

26,235 lbs

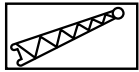
'Taxi' Version


SAE

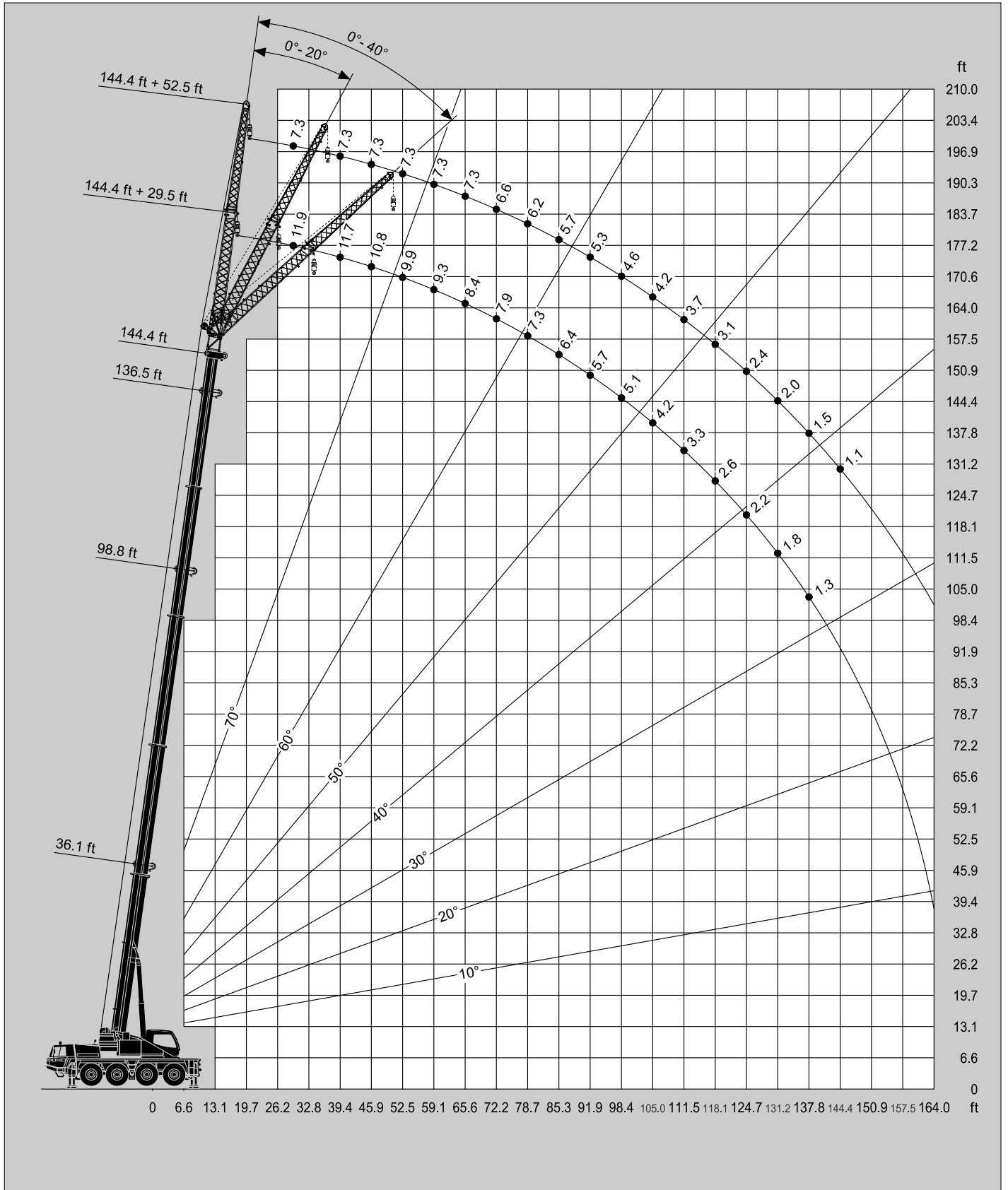
ft	36.1 ft + 52.5 ft			98.8 ft + 52.5 ft			136.5 ft + 52.5 ft			144.4 ft + 52.5 ft		
	0°	20°	40°	0°	20°	40°	0°	20°	40°	0°	20°	40°
9.8	17.4											
11.5	17.4											
13.1	17.4											
14.8	17.4											
16.4	17.4											
19.7	16.8			10.6								
23.0	15.9			10.6								
26.2	14.8	11.9		10.6			7.7					
29.5	13.9	11.2		10.6			7.7			7.3		
32.8	13.0	10.8		10.6			7.7			7.3		
36.1	12.3	10.4		10.6			7.7			7.3		
39.4	11.7	9.7	8.6	10.6	10.1		7.7			7.3		
45.9	10.4	9.0	8.2	10.6	9.7		7.7			7.3		
52.5	9.3	8.4	7.5	10.6	9.3	7.7	7.7	7.7		7.3		
59.1	8.2	7.7	7.3	10.6	8.8	7.5	7.7	7.3		7.3	6.8	
65.6	7.5	7.3	7.1	10.1	8.4	7.3	7.7	6.8		7.3	6.6	6.2
72.2	6.8	7.1	6.8	9.5	7.9	7.1	7.1	6.4	6.0	6.6	6.2	5.7
78.7	6.2	6.8		9.0	7.7	6.8	6.6	6.2	5.7	6.2	6.0	5.5
85.3				7.9	7.3	6.6	6.2	6.0	5.5	5.7	5.5	5.3
91.9				6.8	7.1	6.4	6.0	5.7	5.3	5.3	5.3	5.1
98.4				5.5	6.6	6.2	5.5	5.3	5.1	4.6	4.9	4.9
105.0				4.9	5.5	6.0	4.6	5.1	4.9	4.2	4.4	4.6
111.5				4.0	4.6	5.1	4.0	4.6	4.6	3.7	4.0	4.2
118.1				3.3	4.0	4.2	3.1	4.0	4.4	3.1	3.5	3.7
124.7				2.6	3.1		2.6	3.1	3.7	2.4	3.1	3.3
131.2				2.2	2.4		2.2	2.6	3.1	2.0	2.6	2.9
137.8				1.8	2.0		1.8	2.2	2.4	1.5	2.0	2.4
144.4				1.5			1.3	1.8	2.0	1.1	1.5	2.0
150.9								1.3	1.5		1.1	1.3



Lifting heights / Alturas de elevación


26,235 lbs 'Taxi' Version
 SAE



## Lifting capacities / Capacidades de elevación


ft	36.1 ft + 29.5 ft			98.8 ft + 29.5 ft			136.5 ft + 29.5 ft			144.4 ft + 29.5 ft		
	0°	20°	40°	0°	20°	40°	0°	20°	40°	0°	20°	40°
9.8	23.1*											
11.5	23.1*											
13.1	23.1*	23.1*										
14.8	23.1*	23.1*		23.1*								
16.4	23.1*	23.1*		23.1*								
19.7	23.1*	23.1*	19.6*	23.1*								
23.0	23.1*	21.8*	18.7	23.1*			13.2					
26.2	23.1*	20.7*	17.9	22.3*	17.9		13.2			11.9		
29.5	22.9*	19.6*	17.2	21.2*	17.0		13.2			11.9		
32.8	20.9*	18.7	16.5	19.8*	16.1	14.1	13.2			11.9		
36.1	19.2	18.1	15.9	18.7	15.4	13.4	13.2	11.9		11.9	11.2	
39.4	17.9	17.2	15.4	17.9	14.8	13.0	12.6	11.5		11.7	10.8	
45.9	15.7	15.9	14.8	16.1	13.7	12.1	11.5	10.8	9.7	10.8	10.1	9.5
52.5	13.9	15.0		14.8	12.8	11.5	10.6	9.9	9.3	9.9	9.5	8.8
59.1				13.2	11.9	10.8	9.7	9.5	8.6	9.3	8.8	8.4
65.6				11.9	11.2	10.4	9.0	8.8	8.2	8.4	8.4	7.9
72.2				10.6	10.6	9.9	8.4	8.2	7.7	7.9	7.7	7.5
78.7				9.5	9.7	9.5	7.9	7.7	7.5	7.3	7.3	7.1
85.3				8.6	8.8	8.8	7.1	7.3	7.1	6.4	6.6	6.6
91.9				7.5	7.7	7.9	6.4	6.6	6.6	5.7	6.0	6.0
98.4				6.4	6.8	6.8	5.7	6.0	6.2	5.1	5.3	5.3
105.0				5.3	5.5		5.1	5.3	5.5	4.4	4.9	4.9
111.5				4.6	4.6		4.4	4.6	4.9	4.0	4.2	4.4
118.1				4.0			4.0	4.2	4.4	3.5	3.7	4.0
124.7							3.3	3.7	3.7	3.1	3.3	3.3
131.2							2.6	2.9	3.1	2.6	2.9	2.9
137.8							2.2	2.4		2.2	2.4	2.4
144.4							1.8	2.0		1.8	2.0	
150.9							1.5	1.5		1.3	1.5	

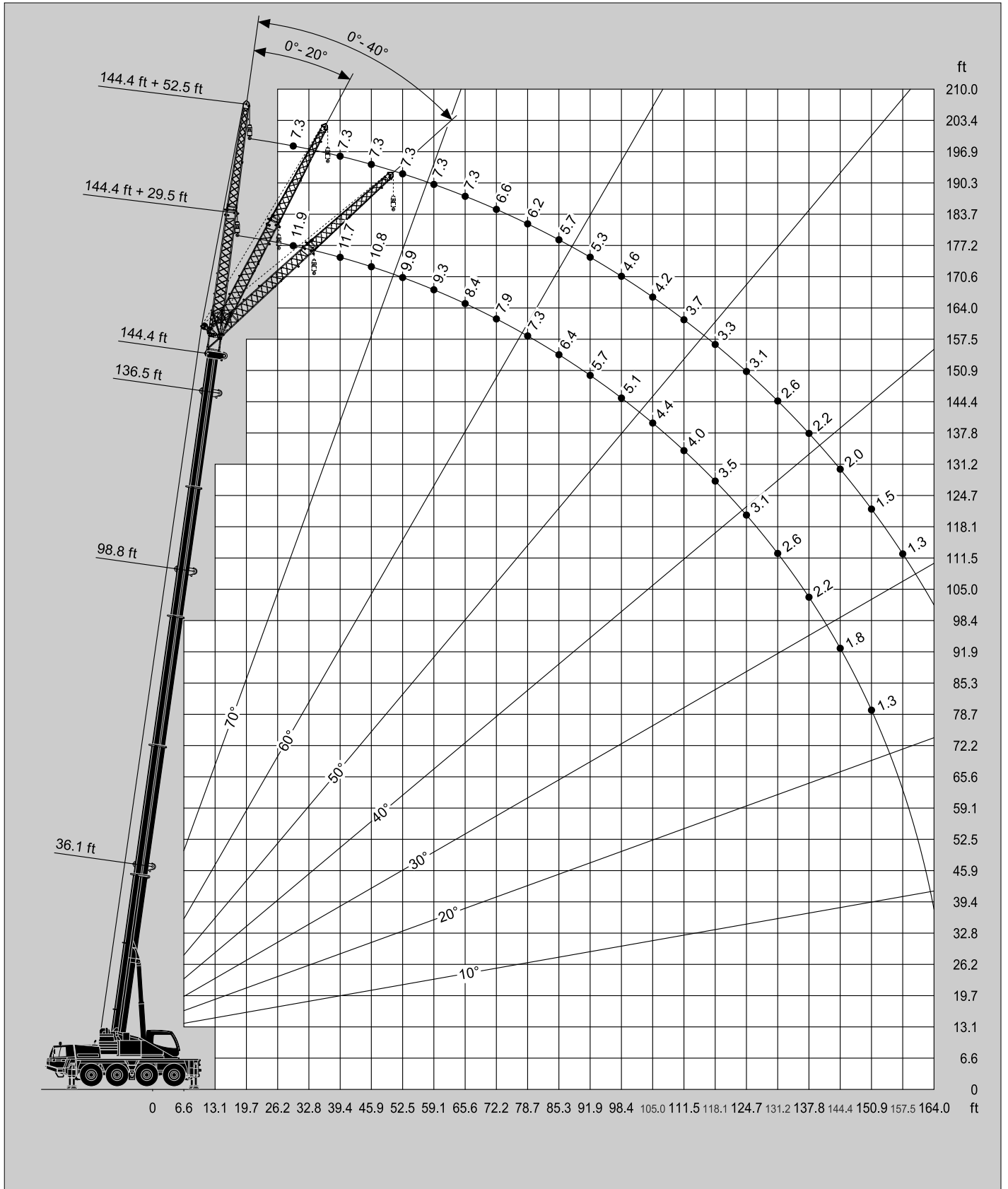
\* With additional lifting equipment / \* Con equipo adicional

ft	36.1 ft + 52.5 ft			98.8 ft + 52.5 ft			136.5 ft + 52.5 ft			144.4 ft + 52.5 ft		
	0°	20°	40°	0°	20°	40°	0°	20°	40°	0°	20°	40°
9.8	17.4											
11.5	17.4											
13.1	17.4											
14.8	17.4											
16.4	17.4											
19.7	16.8			10.6								
23.0	15.9			10.6								
26.2	14.8	11.9		10.6			7.7					
29.5	13.9	11.2		10.6			7.7			7.3		
32.8	13.0	10.8		10.6			7.7			7.3		
36.1	12.3	10.4		10.6			7.7			7.3		
39.4	11.7	9.7	8.6	10.6	10.1		7.7			7.3		
45.9	10.4	9.0	8.2	10.6	9.7		7.7			7.3		
52.5	9.3	8.4	7.5	10.6	9.3	7.7	7.7	7.7		7.3		
59.1	8.2	7.7	7.3	10.6	8.8	7.5	7.7	7.3		7.3	6.8	
65.6	7.5	7.3	7.1	10.1	8.4	7.3	7.7	6.8		7.3	6.6	6.2
72.2	6.8	7.1	6.8	9.5	7.9	7.1	7.1	6.4	6.0	6.6	6.2	5.7
78.7	6.2	6.8		9.0	7.7	6.8	6.6	6.2	5.7	6.2	6.0	5.5
85.3				8.2	7.3	6.6	6.2	6.0	5.5	5.7	5.5	5.3
91.9				7.5	7.1	6.4	6.0	5.7	5.3	5.3	5.3	5.1
98.4				6.6	6.6	6.2	5.5	5.3	5.1	4.6	4.9	4.9
105.0				6.0	6.4	6.0	4.9	5.1	4.9	4.2	4.4	4.6
111.5				5.1	5.7	5.7	4.4	4.9	4.6	3.7	4.0	4.2
118.1				4.4	4.9	5.3	4.0	4.4	4.4	3.3	3.5	3.7
124.7				4.0	4.2		3.5	4.0	4.2	3.1	3.3	3.3
131.2				3.1	3.7		3.1	3.5	3.7	2.6	2.9	3.1
137.8				2.6	2.9		2.6	3.1	3.3	2.2	2.6	2.9
144.4				2.4			2.2	2.6	2.9	2.0	2.2	2.4
150.9							1.8	2.0	2.2	1.5	2.0	2.2
157.5							1.3	1.8		1.3	1.5	1.8
164.0								1.3			1.3	

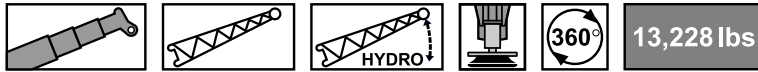
Lifting heights / Alturas de elevación





26,235 lbs + 6,834 lbs  
Option = 33,069 lbs
SAE

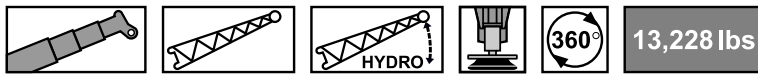


## Lifting capacities / Capacidades de elevación



ft	36.1 ft + 29.5 ft			98.8 ft + 29.5 ft			136.5 ft + 29.5 ft			144.4 ft + 29.5 ft		
	0°	20°	40°	0°	20°	40°	0°	20°	40°	0°	20°	40°
9.8	23.1*											
11.5	23.1*											
13.1	23.1*	23.1*										
14.8	23.1*	23.1*		23.1*								
16.4	23.1*	23.1*		23.1*								
19.7	23.1*	23.1*	19.6*	23.1*								
23.0	23.1*	21.8*	18.7	23.1*			13.2					
26.2	23.1*	20.7*	17.9	22.3*	17.9		13.2			11.9		
29.5	22.9*	19.6*	17.2	21.2*	17.0		13.2			11.9		
32.8	20.9*	18.7	16.5	19.8*	16.1	14.1	13.2			11.9		
36.1	19.2	18.1	15.9	18.7	15.4	13.4	13.2	11.9		11.9	11.2	
39.4	17.9	17.2	15.4	17.9	14.8	13.0	12.6	11.5		11.7	10.8	
45.9	15.7	15.9	14.8	16.1	13.7	12.1	11.5	10.8	9.7	10.8	10.1	9.5
52.5	13.9	15.0		13.2	12.8	11.5	10.6	9.9	9.3	9.9	9.5	8.8
59.1				10.4	11.5	10.8	9.7	9.5	8.6	9.3	8.8	8.4
65.6				8.2	9.3	9.7	8.6	8.8	8.2	8.4	8.4	7.9
72.2				6.6	7.3	7.7	6.8	7.7	7.7	6.8	7.5	7.5
78.7				5.1	5.7	6.4	5.3	6.2	6.8	5.3	6.2	6.6
85.3				4.0	4.6	4.9	4.4	4.9	5.3	4.2	4.9	5.3
91.9				2.9	3.3	3.7	3.3	4.0	4.4	3.1	4.0	4.2
98.4				2.2	2.6	2.6	2.4	2.9	3.3	2.4	2.9	3.1
105.0				1.5	1.8		1.8	2.2	2.4	1.8	2.2	2.4
111.5					1.3		1.3	1.5	1.8	1.1	1.5	1.8
118.1									1.3			1.3

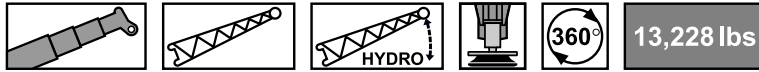
\* With additional lifting equipment / \* Con equipo adicional



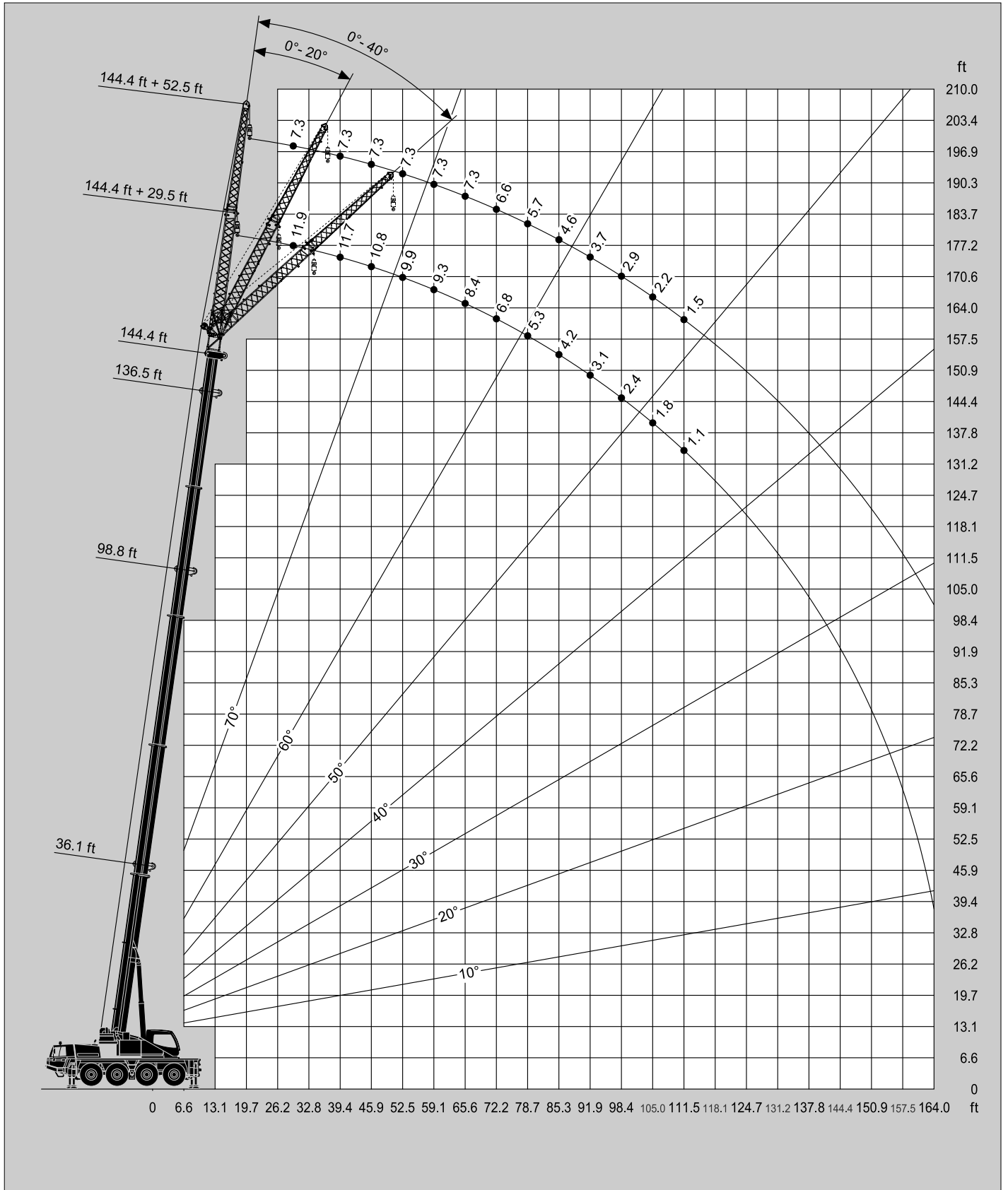
ft	36.1 ft + 52.5 ft			98.8 ft + 52.5 ft			136.5 ft + 52.5 ft			144.4 ft + 52.5 ft		
	0°	20°	40°	0°	20°	40°	0°	20°	40°	0°	20°	40°
9.8	17.4											
11.5	17.4											
13.1	17.4											
14.8	17.4											
16.4	17.4											
19.7	16.8			10.6								
23.0	15.9			10.6								
26.2	14.8	11.9		10.6			7.7					
29.5	13.9	11.2		10.6			7.7			7.3		
32.8	13.0	10.8		10.6			7.7			7.3		
36.1	12.3	10.4		10.6			7.7			7.3		
39.4	11.7	9.7	8.6	10.6	10.1		7.7			7.3		
45.9	10.4	9.0	8.2	10.6	9.7		7.7			7.3		
52.5	9.3	8.4	7.5	10.6	9.3	7.7	7.7	7.7		7.3		
59.1	8.2	7.7	7.3	10.6	8.8	7.5	7.7	7.3		7.3	6.8	
65.6	7.5	7.3	7.1	9.3	8.4	7.3	7.7	6.8		7.3	6.6	6.2
72.2	6.8	7.1	6.8	7.3	7.9	7.1	7.1	6.4	6.0	6.6	6.2	5.7
78.7	6.2	6.8		5.7	7.3	6.8	5.7	6.2	5.7	5.7	6.0	5.5
85.3				4.9	5.7	6.6	4.9	6.0	5.5	4.6	5.5	5.3
91.9				4.0	4.9	5.5	3.7	4.9	5.3	3.7	4.9	5.1
98.4				2.9	4.0	4.4	2.9	4.0	4.6	2.9	4.0	4.6
105.0				2.2	2.9	3.3	2.2	3.1	4.0	2.2	2.9	3.7
111.5				1.8	2.2	2.6	1.5	2.4	2.9	1.5	2.2	2.9
118.1				1.1	1.8	2.0		1.8	2.2		1.8	2.2
124.7					1.1			1.3	1.8		1.3	1.8
131.2									1.1			1.1



Lifting heights / Alturas de elevación




SAE



## Lifting capacities / Capacidades de elevación

## Lifting heights / Alturas de elevación




**26,235 lbs** **SAE**

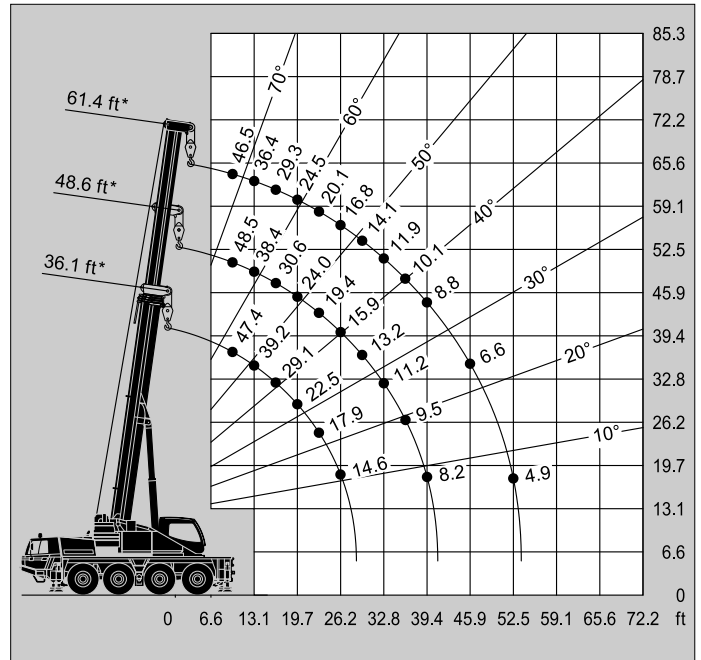

ft	36.1 ft*	48.6 ft*	61.4 ft*
9.8	47.4	48.5	46.5
11.5	43.2	43.4	41.0
13.1	39.2	38.4	36.4
14.8	33.5	34.2	32.6
16.4	29.1	30.6	29.3
19.7	22.5	24.0	24.5
23.0	17.9	19.4	20.1
26.2	14.6	15.9	16.8
29.5		13.2	14.1
32.8		11.2	11.9
36.1		9.5	10.1
39.4		8.2	8.8
45.9			6.6
52.5			4.9

\* Superstructure locked / \* Bloqueo de superestructura

'Taxi' Version



**26,235 lbs** **SAE**

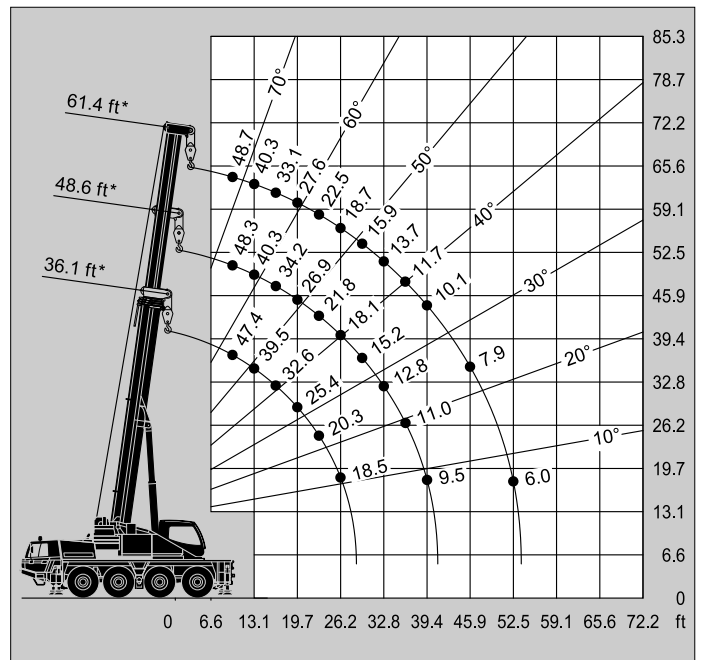
**33,069 lbs** **SAE**

ft	36.1 ft*	48.6 ft*	61.4 ft*
9.8	47.4	48.3	48.7
11.5	43.2	44.1	44.5
13.1	39.5	40.3	40.3
14.8	36.4	37.3	36.4
16.4	32.6	34.2	33.1
19.7	25.4	26.9	27.6
23.0	20.3	21.8	22.5
26.2	18.5	18.1	18.7
29.5		15.2	15.9
32.8		12.8	13.7
36.1		11.0	11.7
39.4		9.5	10.1
45.9			7.9
52.5			6.0

\* Superstructure locked / \* Bloqueo de superestructura




**33,069 lbs** **SAE**



## Lifting capacities / Capacidades de elevación


## Lifting heights / Alturas de elevación



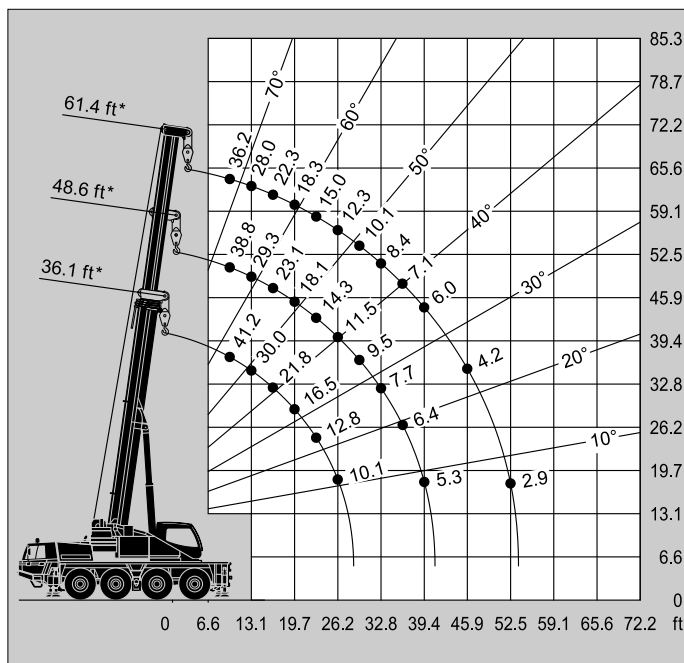
**13,228 lbs** **SAE**

ft	36.1 ft*	48.6 ft*	61.4 ft*
9.8	41.2	38.8	36.2
11.5	35.1	33.3	31.5
13.1	30.0	29.3	28.0
14.8	25.4	25.8	24.9
16.4	21.8	23.1	22.3
19.7	16.5	18.1	18.3
23.0	12.8	14.3	15.0
26.2	10.1	11.5	12.3
29.5		9.5	10.1
32.8		7.7	8.4
36.1		6.4	7.1
39.4		5.3	6.0
45.9			4.2
52.5			2.9

\* Superstructure locked / \* Bloqueo de superestructura



**13,228 lbs** **SAE**



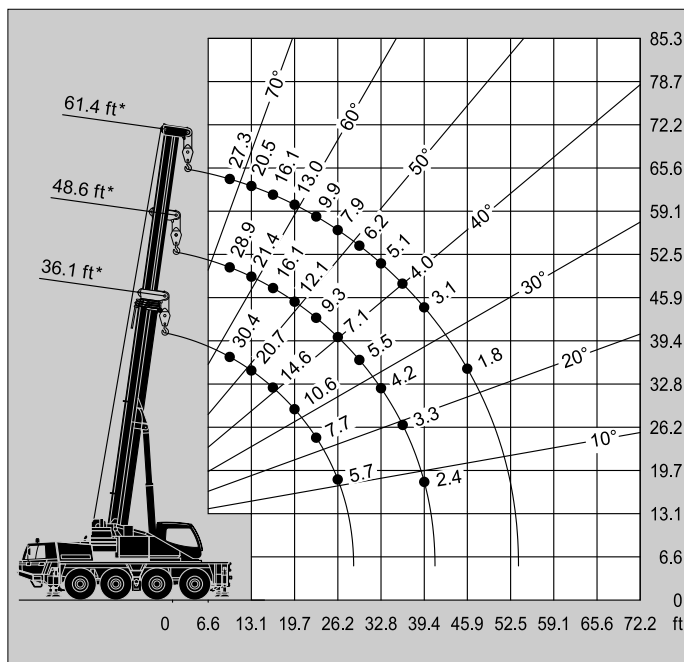

**0 lbs** **SAE**

ft	36.1 ft*	48.6 ft*	61.4 ft*
9.8	30.4	28.9	27.3
11.5	25.6	24.7	23.6
13.1	20.7	21.4	20.5
14.8	17.2	18.7	18.1
16.4	14.6	16.1	16.1
19.7	10.6	12.1	13.0
23.0	7.7	9.3	9.9
26.2	5.7	7.1	7.9
29.5		5.5	6.2
32.8		4.2	5.1
36.1		3.3	4.0
39.4		2.4	3.1
45.9			1.8
52.5			

\* Superstructure locked / \* Bloqueo de superestructura



**0 lbs** **SAE**



## WARNING AND OPERATING INSTRUCTIONS FOR LIFTING CAPACITIES ATF 70G-4

### GENERAL

- Total rated loads shown on the TADANO LOAD RATING CHART apply only to the machine as originally manufactured and normally equipped by TADANO. Modifications to the machine or use of optional equipment other than that specified can result in a reduction of capacity.
- Construction equipment can be dangerous if improperly operated or maintained. Operation and maintenance of this machine must be in compliance with the information in the operation, safety and maintenance manual supplied with the machine. If this manual is missing, order replacement through the distributor.
- The operator and other personnel associated with this machine shall fully acquaint themselves with the latest applicable American National Standards Institute (ANSI) safety standards for cranes.

### SET UP

- Total rated loads shown on the TADANO LOAD RATING CHART are the maximum allowable crane capacities and are based on the machine standing level on firm supporting surface under ideal job conditions. Depending on the nature of the supporting surface, it may be necessary to have structural supports under the outrigger floats to spread the load to a larger bearing surface.
- For on outrigger operation, outriggers shall be extended to the dimension according to the TADANO LOAD RATING CHART and secured by pins with tires free of supporting surface, before operating crane.

### OPERATION

- Total rated loads with outriggers fully extended do not exceed 85% of the tipping loads. Total rated loads with outriggers half extended are determined from the formula: Total rated load = (tipping load - 0.1 tip reaction) / 1.25
- The crane's structural steelwork is in accordance with DIN 15018, part 3. Design and construction of the crane comply with DIN 15018, part 2 and with F.E.M regulations.
- Total rated loads include the weight of the main hook block, auxiliary hook ball, sling and other auxiliary lifting devices and all their weights shall be subtracted from the listed capacities to obtain the net load to be lifted.

Hook ball / hook block (ton)	6.6	13.8	35.3	55.1	69.4	88.2
Number of sheaves	-	1	3	5	7	9
Weight (lbs)	331	375	661	1,047	1,433	1,764

Number of rope lines	1	2	3	4	5	6	7	8	9	10	11	12	13*
Max. load capacity (ton)	4.9	9.7	14.6	19.4	24.1	28.9	33.6	38.4	43.0	47.6	52.2	56.9	61.4
Number of rope lines	14*	15*	16*	17*									
Max. load capacity (ton)	65.9	70.4	74.9	77.2									

\* For 13 and more partsof line additional lifting equipment is necessary, see operation and maintenance manual.

- Total rated loads are based on freely suspended loads and make no allowance for such factors as the effect of wind, sudden stopping of loads, supporting surface conditions, operating speeds, side loads, etc. Side pull on boom or jib is extremely dangerous.
- Total rated loads are taken into account for wind on lifted load or boom as given at load rating charts below. Total rated loads and boom lengths shall be appropriately reduced, when wind velocity is higher than wind speeds given at load rating charts.

Wind speed restrictions for main boom operation		
If the wind speed is		Rated lifting capacities must be reduced to
0 – ≤ 26 ft/s	0 – ≤ 18 mph	no reduction (see load rating charts = 100% normal lifting operation)
> 26 ft/s – ≤ 39 ft/s	> 18 mph – ≤ 27 mph	50%
> 39 ft/s – ≤ 50 ft/s	> 27 mph – ≤ 34 mph	30%
> 50 ft/s	> 34 mph	Crane operation must be shutdown and boom retracted and lowered to horizontal

- Total rated loads at load radius shall not be exceeded. Do not tip the crane to determine allowable loads.
- Do not operate at boom lengths beyond radii or boom angles where no capacities are shown. Crane may overturn without any load at the hook.
- Slewing of the superstructure is admissible only when the crane is supported on half or fully extended outriggers.
- The lifting capacity ratings specified in the TADANO LOAD RATING CHART apply to the telescopic boom without fly jib fixed in transport position or working position. If the fly jib is secured to the telescopic boom in transport position or working position, the lifting capacities of the telescopic boom are reduced by the values specified below. The weight of the fly jib is detected in terms of a load, and the load moment limiter will shut off earlier.
 

29.5 ft / 52.5 ft fly jib, mounted in transport position	880 lbs
29.5 ft fly jib, mounted to the boom head	2,200 lbs
52.5 ft fly jib, mounted to the boom head	3,310 lbs

- When making lifts at a load radius not shown, use the next longer radius to determine allowable capacity.
- Load per part line should not exceed 9,800 lbf for the main winch and for the auxiliary winch.
- Loaded boom angles are approximate. The boom angle before loading should be greater to account for deflection.
- Extension or retraction of the telescopic boom with loads may be attempted within the limits of the TADANO LOAD RATING CHART. The ability to telescope loads is limited by hydraulic pressure, boom angle, boom length, crane maintenance, etc.

- When erecting or stowing the fly jib, be sure to retain it by hand or by other means to prevent its free movement.
- Use the Anti-Two Block (OVERWIND CUTOFF) disable switch when erecting or stowing the fly jib and stowing the hook block. While the switch is pushed, the hoist will not stop, even when an overwind - condition occurs.
- The working radius specified in the TADANO LOAD RATING CHARTS for the fly jib applies only if the telescopic boom is extended according to the TADANO LOAD RATING CHARTS. If one or more elements of the telescopic boom are retracted partially or completely, the specified boom angles will be decisive in determining total rated lifting capacities.
- When lifting a load by using the fly jib (auxiliary hoist) and telescopic boom (main hoist) simultaneously, do the following:
  - Select the correct program for the load moment device in accordance with jib length, jib offset angle, counterweight and outrigger base.
  - Before starting the operation, make sure that the weight of the load is within the total rated load for the fly jib.
- Working with Single Top  
Operation with the single top is allowed with the main winch and the auxiliary winch. The maximum allowed capacity is limited by the selected S.L.I. code for main boom operation according to existing counterweight and outrigger base at one side and by the single line pull which is limited by hydraulic pressure at the other side.

For operations with the single top mounted, use the TADANO LOAD RATING CHART for the telescopic boom in accordance with existing counterweight and outrigger base to find the total rated lifting capacity and also select the correct S.L.I. code for the telescopic boom in accordance with the existing counterweight and outrigger base. Find the total rated lifting capacity based on boom length and working radius. From that value, subtract 1,100 lbs and the weights of all lifting equipment used including hook block, sling and other auxiliary lifting devices. The result (< total rated lifting capacity > - < 1,100 lbs > - < lifting equipment >) is the total rated lifting capacity for a single top lift.

### 19. Working with Auxiliary Winch

The weight of the auxiliary winch is taken into account as a part of counterweight. Therefore the auxiliary winch must be always attached to the superstructure for crane working. In case that the auxiliary winch is disassembled from superstructure, the 2 counterweight pieces each with 0.44 tons have to be attached to the superstructure instead of auxiliary winch.

### Definitions

- Working Radius:** Horizontal distance from a projection of the axis of rotation to supporting surface before loading to the center of the vertical hoist line or tackle with load applied. The deflection of the boom due to its deadweight and the rated load are taken into account.
- Loaded Boom Angle:** The angle between the boom base section and the horizontal, after lifting the total rated load at the working radius.
- Working Area:** Area measured in a circular arc about the centerline of rotation.
- Freely Suspended Load:** Load hanging free with no direct external force applied except by the hoist line.
- Side Load:** Horizontal side force applied to the lifted load either on the ground or in the air.

## WARNING AND OPERATING INSTRUCTIONS FOR ON TIRE CAPACITIES

- Total rated lifting capacities on tires are in pounds and do not exceed 75% of tipping loads as determined by test in accordance with SAE J-765.
- Total rated lifting capacities shown in the TADANO LOAD RATING CHART are based on the condition that the crane is set on firm level supporting surfaces with suspension let down to block. They are based on actual load radius increased by tire deformation and boom deflection.
- Total rated lifting capacities are based on proper tire inflation, capacity and condition. Damaged tires are hazardous to safe operation of the crane.
- Tires shall be inflated to correct air pressure, acc. to tire size at carrier:

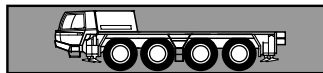
Tire	Air pressure
14.00 R 25	145 psi ( 10 kg f/cm <sup>2</sup> )
16.00 R 25	130 psi ( 9 kg f/cm <sup>2</sup> )
20.5 R 25	100 psi ( 7 kg f/cm <sup>2</sup> )

- On tire lifting with "fly jib" is not permitted.
- When making a lift on tires, set the parking brake.
- Travelling with the load is permitted only if the following conditions exist: Machine is set on firm level supporting surface; tires inflated to specified pressure; boom must be centered over the rear of the machine; superstructure swing lock pin engaged; slewing brake engaged; maximum boom length not to exceed 61.4 ft; lifted load kept as close to the ground as possible and fastened to the chassis to prevent the lifted load from swinging or oscillating; travel slowly with a creeping speed not to exceed 1 mph; and especially avoid any abrupt steering, accelerating or braking. If possible, extend the outriggers and lower the outrigger floats to just above ground level.
- Do not operate the crane while carrying the load.

### Safe Load Indicator

The Safe Load Indicator is intended as an aid to the operator. Under no condition should it be relied upon to replace use of Load Rating Charts and Operating Instructions. Sole reliance upon the Safe Load Indicator Aids in place of good operating practice can cause an accident. The operator must exercise caution to assure safety.





**Frame** Torsion resistant, welded construction made from high strength, fine-grained steel.

**Outriggers** 4 point, telescopic hydraulic outriggers with controls on both sides of carrier and in superstructure cab. Outrigger base 20' 11-15/16" (6.4 m) (14' 5-1/4" (4.4 m) mid extension) x 25' 7-1/16" (7.8 m).

**Carrier engine** Mercedes-Benz 6 cylinder model OM 501 LA (Euromot III B), water-cooled diesel engine. Rated at 320 kW (435 HP) at 1800 min<sup>-1</sup>. Torque 2100 Nm (214 kpm) at 1300 min<sup>-1</sup>. Engine rating according to 80/1269/EWG. Fuel tank 87 gal (330 l). AdBlue-tank: 11 gal (40 l).

**Transmission** ZF-AS-Tronic 12 AS 2302 mechanical transmission with electro-pneumatically operated dry-type clutch and automatic gear shifting with 12 forward gears and 2 reverse gears. Power/Economy mode.

**Transfer Case** Two stage.

**Drive** 8 x 6 (8 x 8 option).

#### Axles

1<sup>st</sup> axle: steered, not driven.

2<sup>nd</sup> axle: steered, driven, with differential lock, transverse.

3<sup>rd</sup> axle: steered, driven, with differential locks longitudinal and transverse.

4<sup>th</sup> axle: steered, driven, with differential lock, transverse.

**Suspension** Hydro-pneumatic with levelling adjustment.

**Brake system** Service brakes: dual circuit compressed air system with ABS. Parking brake: spring loaded type acting on 2<sup>nd</sup>, 3<sup>rd</sup> and 4<sup>th</sup> axles. Auxiliary brakes: intarder, engine exhaust brake and constant throttle engine brake system.

**Tyres** (8) 385/95 R 25 (14.00 R 25), width 8' 4-3/8" (2.55 m).

**Steering system** ZF-Servocom, dual circuit hydraulic steering with emergency steering pump, mechanical hydraulically-assisted steering of front two axles and automatic steering of the 4<sup>th</sup> axle up to a travel speed of 15.5 mph (25 km/h). Steering of all axles possible. All axles steered hydrostatically from superstructure cab.

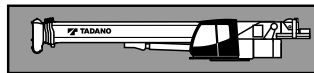
**Carrier cab** Two man full width cab of composite (steel sheet metal and fibre-glass) structure, with safety glass, air-cushioned adjustable seats (drivers seat with heater) and engine dependent hot-water heater, radio-CD-player, complete controls and instrumentation for road travel. Speed and brake control.

**Electrical system** 24 volt DC system, 2 batteries, outrigger area lighting. Electrical system conforms with EEC regulations.

#### Optional Equipment (at extra charge)

Towing attachment, engine independent additional heater with engine pre-heat, air conditioning, 8 x 8 drive, 445/95 R 25 (16.00 R 25), 525/80 R 25 (20.5 R 25) tyres, spare wheel and tyre, special painting and lettering.

Further optional equipment available upon request.



**Frame** Torsion-resistant, all-welded structure of high strength steel. Connected to carrier by single-row ball-bearing slewing ring with external gearing for 360° continuous rotation.

**Superstructure engine** Mercedes-Benz 4 cylinder model OM 924 LA (Euromot III B), water cooled, diesel engine. RPM infinitely variable via foot pedal, rating 95 kW (129 HP) at 2200 min<sup>-1</sup>. Torque 500 Nm (51 kpm) at 1200 - 1600 min<sup>-1</sup>. Engine rating according to 80/1269/EWG. Fuel tank 52.8 gal (200 l). AdBlue-tank: 2 gal (8 l).

**Hydraulic system** Three circuit diesel hydraulic system with 1 power controlled axial piston double pump (hydraulically adjustable) and 1 double gear pump, oil cooler.

**Controls** Electrical, 2 joy-stick levers for simultaneous operation of crane motions.

**Telescopic boom** 5 sections, made of high tensile, fine-grained steel, consisting of 1 base section and 4 telescoping sections extended by means of a single telescopic cylinder. All telescope sections extendable under partial load. 36' 1-1/16" (11.0 m) to 144' 4-5/16" (44.0 m) long.

**Derricking system** 1 double acting hydraulic cylinder with integral brake and holding valve.

**Main winch** Axial piston motor, winch drum with integrated planetary reduction and with hydraulically controlled spring-loaded, multiple disc brake and with integrated free rotation (no sagging of load when hoisting). Hoist cable with 'Super-Stop' easy reeving system.

**Slewing system** Axial piston motor with two-stage planetary reduction with a foot actuated service and a parking brake. Speed infinitely variable 0 - 2 min<sup>-1</sup>.

**Counterweight** Standard 'Taxi' 11.9 t divisible, assembled and disassembled by hydraulic cylinders controlled from superstructure cab.

**Superstructure cab** Spacious panoramic cab of composite structure with safety (tinted) glass windows, tiltable cockpit with hydraulically cushioned adjustable seat with heater, engine independent hot-water heater, radio-CD-player, complete controls and instrumentation for crane operation, on-site travelling and outriggers.

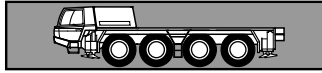
**Electrical system** 24 volt DC system, 2 batteries.

**Safety devices** Load moment device (LMD), working area limiter, hoist limit switch, lower limit switch and drum turn indicator, safety valves against pipe and hose rupture. Holding valves on hydraulic cylinders.

#### Optional Equipment (at extra charge)

'Lift Adjuster', boom extension 29.5 ft (9.0 m) / 52.5 ft (16.0 m) offsets 0°, 20° and 40° or hydraulically 0°-40°, heavy duty jib 5.2' (1.6 m), additional counterweight 3.1 t, selection of hook blocks, auxiliary winch (same as main winch), slewing area limitation, engine independent heater with engine pre-heat, additional oil cooler, central lubricating system, air conditioning, special painting and lettering.

Further optional equipment available upon request.



**Chasis portante** Construcción de acero de alta resistencia soldado, resistente a la torsión y a la flexión.

**Estabilizadores** Estabilizadores hidráulicos de 4 puntos. Posibilidad de manejo desde ambos lados del chasis portante y desde la cabina de la grúa. Extensión de los estabilizadores: 6,4 m (y 4,4 m) x 7,8 m.

**Motor** Mercedes-Benz modelo OM 501 LA (Euromot III B), 6 cilindros, diesel, refrigerado por agua. Nominal 320 kW (435 HP) a 1800 min<sup>-1</sup>. Par 2100 Nm (214 kpm) a 1300 min<sup>-1</sup>. Potencia del motor según 80/1269/EWG. Depósito de combustible de 330 l. Depósito AdBlue 40 l.

**Transmisión** Transmisión mecánica tipo ZF-AS Tronic modelo 12 AS 2302 con accionamiento electro - neumáticamente embrague en seco y cambio automático 12 marchas delanteras y 2 marchas traseras. Modo rendimiento máximo / económico.

**Transmisión** Caja de distribución (transfer) con 2 relaciones de velocidad.

**Tracción** 8 x 6 (8 x 8 opción).

#### Ejes

- 1º eje: de dirección, no accionado.
- 2º eje: de dirección, accionado, con bloqueo diferencial transversal.
- 3º eje: de dirección, accionado, con bloqueo diferencial transversal y longitudinal.
- 4º eje: de dirección, accionado, con bloqueo diferencial transversal.

**Suspensión** Suspensión hidroneumática con regulación de nivel.

**Sistema de frenos** Accionamiento neumático de doble circuito con sistema anti bloqueo ABS. Freno de estacionamiento con acumuladores de muelle. Con actuación sobre los ejes 2º, 3º y 4º. Intarder y freno continuo: Freno de motor diesel en el escape.

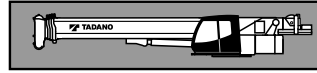
**Neumáticos** 8 x 385/95 R 25 (14.00 R 25), (ancho 2,55 m).

**Dirección** Hidráulica ZF Servocom de doble circuito. Dirección mecánica al 1º y 2º eje y direccionable al 4º eje hasta una velocidad de 25 km/h. Bomba hidráulica de emergencia accionada por la transmisión. Dirección a todos los ejes Desde la cabina de la superestructura: dirección hidrostática a ambos ejes.

**Cabina** Cabina para dos personas, en construcción de acero y fibra de vidrio. Cristales de seguridad, asiento con suspensión neumática, asiento de conductor calefactado, calefacción por agua caliente del motor, radio-CD-player. Elementos de control y manejo para circular por carretera. Regulador de velocidad, sistema automático de frenado.

**Sistema eléctrico** Sistema de 24 V c.c. con 2 baterías, faros en gatos. Focos de iluminación en el área de trabajo de los estabilizadores (gatos). El sistema eléctrico cumple la normativa CEE.

**Equipo adicional** (con suplemento de precio) Embrague de remolque, calefacción adicional con precalefacción del motor, climatización, Tracción 8 x 8, neumáticos 445/95 R 25 (16.00 R 25), 525/80 R 25 (20.5 R 25), rueda de repuesto, pintura especial e rotulación. Otros equipamientos sobre pedido.



**Superestructura** Construida en aceros soldados, resistente a la torsión. Corona de giro con rodamiento de una fila de bolas con dientes externos para giro continuo de 360°.

**Motor** Mercedes-Benz modelo OM 924 LA (Euromot III B), 4 cilindros, diesel, refrigerado por agua. Las revoluciones aumentan de forma gradual accionado el acelerador. Nominal 95 kW (129 HP) a 2200 min<sup>-1</sup>. Par 500 Nm (51 kpm) a 1200 - 1600 min<sup>-1</sup>. Potencia del motor según 80/1269/EWG. Depósito de combustible de 200 l. Depósito AdBlue 8 l.

**Sistema hidráulico** Sistema hidráulico de 3 circuitos, 1 bomba doble de pistones axiales de caudal variable (regulable hidráulicamente) y una bomba de engranajes, enfriador de aceite.

**Mandos** 2 palancas de control de tipo joy-stick para movimientos simultáneos de la grúa (4 direcciones), asistidos eléctricamente.

**Pluma telescópica** 5 secciones, un tramo base y 4 telescópicos de acero de alta resistencia soldado, 1 cilindro hidráulico, los tramos se pueden telescopar hidráulicamente bajo carga. Longitud de 11,0 m a 44,0 m.

**Elevación de pluma** Mediante un cilindro hidráulico de doble efecto con válvula de retención integrada.

**Cabrestante principal** Motor hidráulico de pistones axiales y caudal fijo. Tambor del cabrestante con reducción planetaria y frenos de disco múltiples accionado, con sistema libre de elevación. Cable de elevación con sistema fácil de guiado y 'Super-Stop'.

**Sistema de giro** Motor hidráulico de pistones axiales con reducción planetaria de dos etapas. Freno de servicio controlado por pedal y freno de estacionamiento. Velocidad de giro variable de 0 a 2 min<sup>-1</sup>.

**Contrapeso** El estándar 'Taxi' 11,9 t divisible, se acciona desde la cabina de la grúa.

**Cabina de la grúa** Cabina espaciosa y confortable, en construcción de acero y fibra de vidrio, con cristales tintados de seguridad. Asiento del operador regulable amortiguado hidráulicamente, inclinable junto con los instrumentos y mandos con calefacción, calefacción por agua caliente independiente del motor, radio-CD-player. Elementos de control y mando para el manejo de la grúa y para el desplazamiento en obra. Mandos para nivelación y extensión de los estabilizadores.




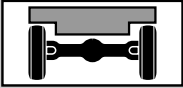






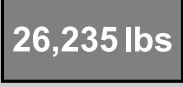
**Sistema eléctrico** Sistema de 24 V c.c. con 2 baterías.

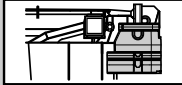
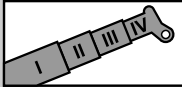
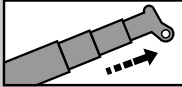
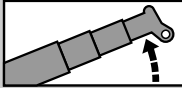

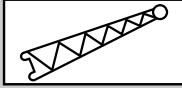

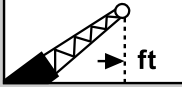



**Medidas de seguridad** Limitación del momento de carga (LMC), limitación del área de trabajo, interruptor de final de elevación, interruptor de 3 últimas vueltas en cabrestante, indicador de bajada o subida del cable del cabrestante, válvulas de seguridad para rotura de tubos y latiguillos. Válvulas de retención en los cilindros hidráulicos.

**Equipo adicional** (con suplemento de precio) 'Lift Adjuster', plumín de 9,0 m / 16,0 m regulable de 0°, 20° y 40° (o hidráulicamente 0° a 40°), plumín de carga pesada de 1,6 m, contrapeso adicional de 3.1 t, selección de ganchos, 2º cabrestante, (similar a cabrestante principal), limitador de giro, calefacción independiente del motor y precalefacción del motor, enfriador adicional, sistema de engrase central, climatización, pintura especial e rotulación.

Otros equipamientos sobre pedido.

## Symbols / Glosario de simbolos

	As on Page 20 Véase la pagina 20
	Outriggers Estabilizadores
	Transmission / Gear Transmisión / Marchas
	Axle load Carga por eje
	<b>445/95</b> (16.00)
	Tyres / Size Neumáticos / Tamaño de ruedas
	Off road Todo terreno
	On road En carretera
	Speeds Velocidades
	Gradeability Superacion de pendientes
	Slewing system Sistema de giro
	<b>26,235 lbs</b>
	Counterweight Contrapeso

	Counterweight versions Variaciones de contrapeso
	Telescopic boom Pluma telescópica
	Boom telescoping Telescopaje de pluma
	Derricking system Elevación de pluma
	Radius Radio
	Boom extension Plumin
	Boom extension hydraulically Plumin hidráulicamente
	Radius Radio
	Main winch Cabrestante principal
	Auxiliary winch 2° cabrestante
	Hook block / Swivel hook Gancho / Gancho de bola