



Valla



TRACKED CRANE MODEL 20 TRX Max capacity 2 ton.



**ELECTRIC BATTERY
POWERED**

NEW

MOTOR: electrical 48 V CA - 12 kW.

TRANSMISSION: automatic, hydrostatic.
Max speed 2 km/h.

FRAME: moulded and welded steel plate.

TRACKED UNDERCARRIAGE: rubber
crawlers.

BOOM: fabricated from preformed
and welded steel plate with 2 hydraulic
telescoping sections fitted with adjust-
able nylon wear pads and manual extension.

HYDRAULIC SYSTEM : consists of gear
pump, proportional distributor with remot
control, filter, safety valves on lifting move-
ments, jib extension. Max. operating pressure 200 Bar.

TOTAL MACHINE WEIGHT: 2.100 Kg.

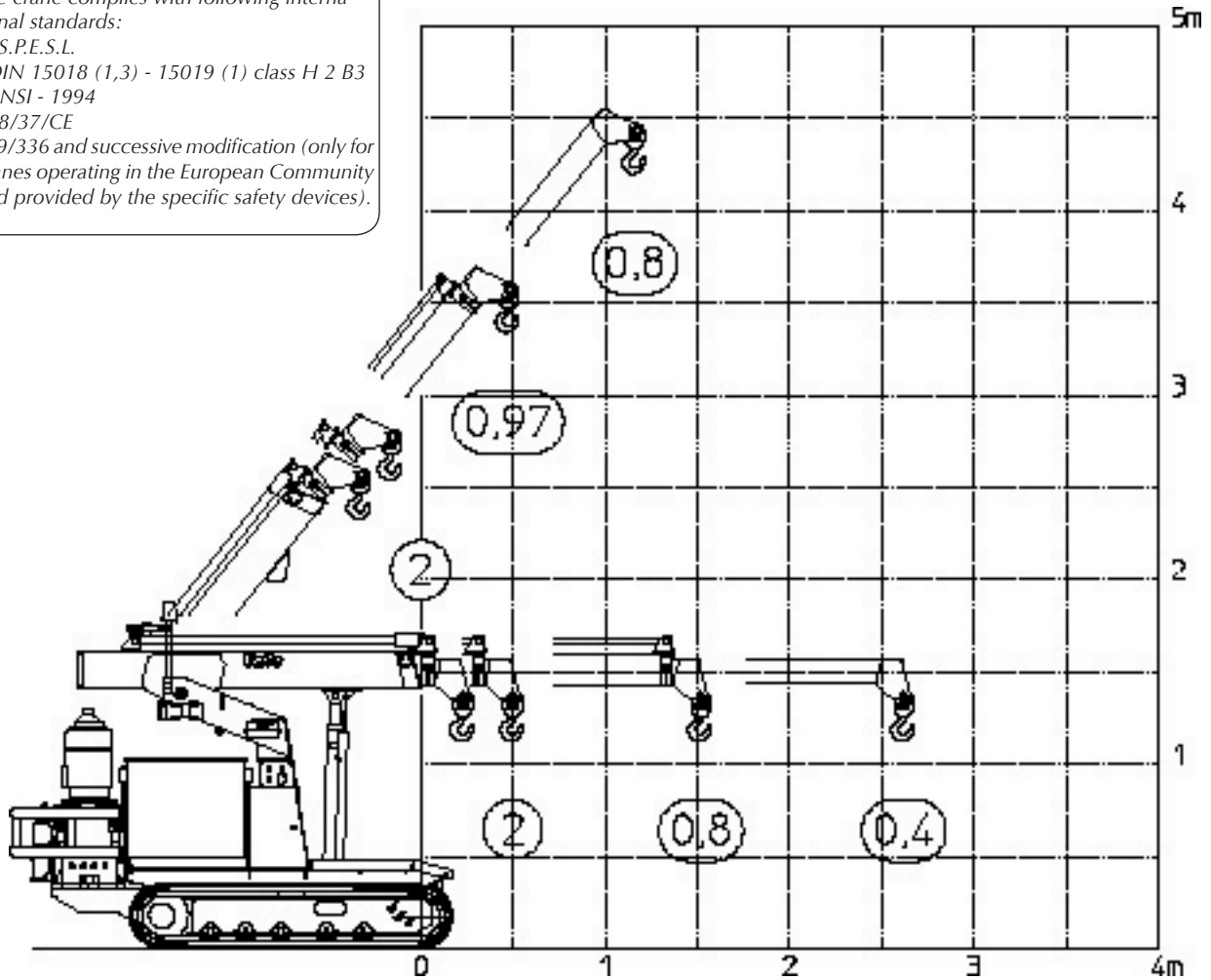
OPTIONAL EXTRAS: L.M.I. (Load Mo-
ment Indicator with angle, boom extension
indicators and visible warning for max cap-
acity), man bucket, radio remote control, hydrau-
lic winch, chain hoist, diesel version, extra
manual extension, battery, battery charger.

Valla S.p.A.

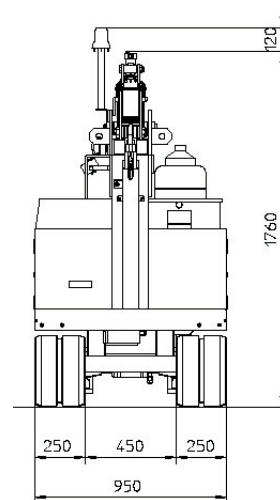
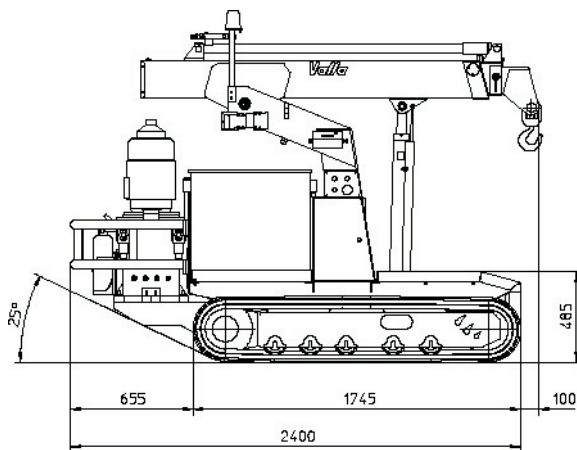
Via Piacenza, 45 - 29010 Calendasco - Piacenza - ITALIA
Tel. 0039 0523 762025 - 762004 - Fax 0039 0523 760531
Internet: www.valla.com - email: info@valla.com

The crane complies with following international standards:

- I.S.P.E.S.L.
- DIN 15018 (1,3) - 15019 (1) class H 2 B3
- ANSI - 1994
- 98/37/CE
- 89/336 and successive modification (only for cranes operating in the European Community and provided by the specific safety devices).



VALLA model 20 TRX



mm

Valla S.p.A.

Via Piacenza, 45 - 29010 Calendasco - Piacenza - ITALIA
 Tel. 0039 0523 762025 - 762004 - Fax 0039 0523 760531
 Internet: www.valla.com - email: info@valla.com

