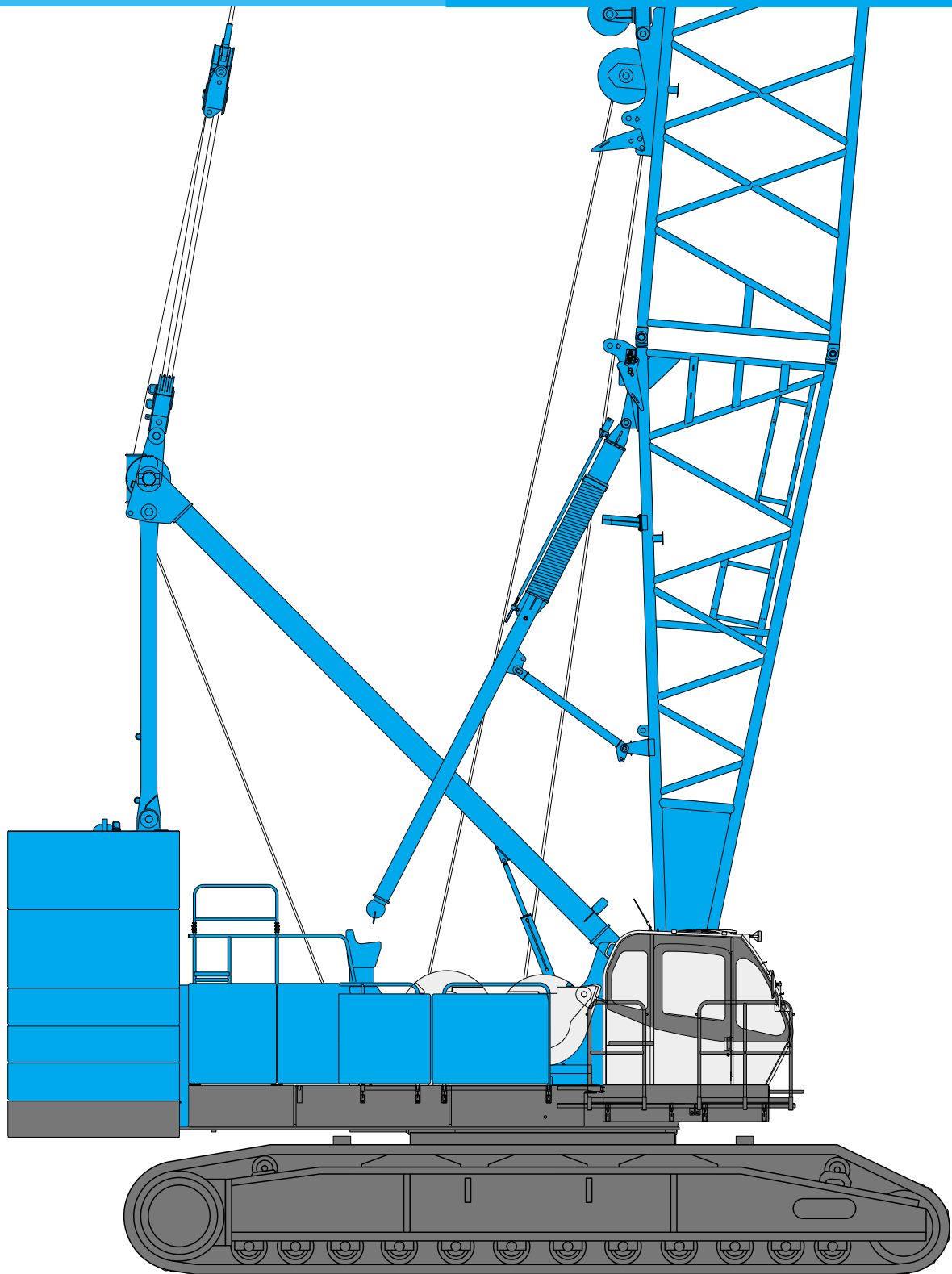




KOBELCO

HYDRAULIC CRAWLER CRANE **7250**

Model: 7250-2F



Max. Lifting Capacity: 250 t x 4.6 m
Max. Crane Boom Length: 76.2 m
Max. Long Boom Length: 91.4 m
Max. Fixed Jib Combination: 76.2 + 30.5m
Max. Tower Jib Combination: 64.1 + 51.8 m



CONFIGURATION

Crane Boom

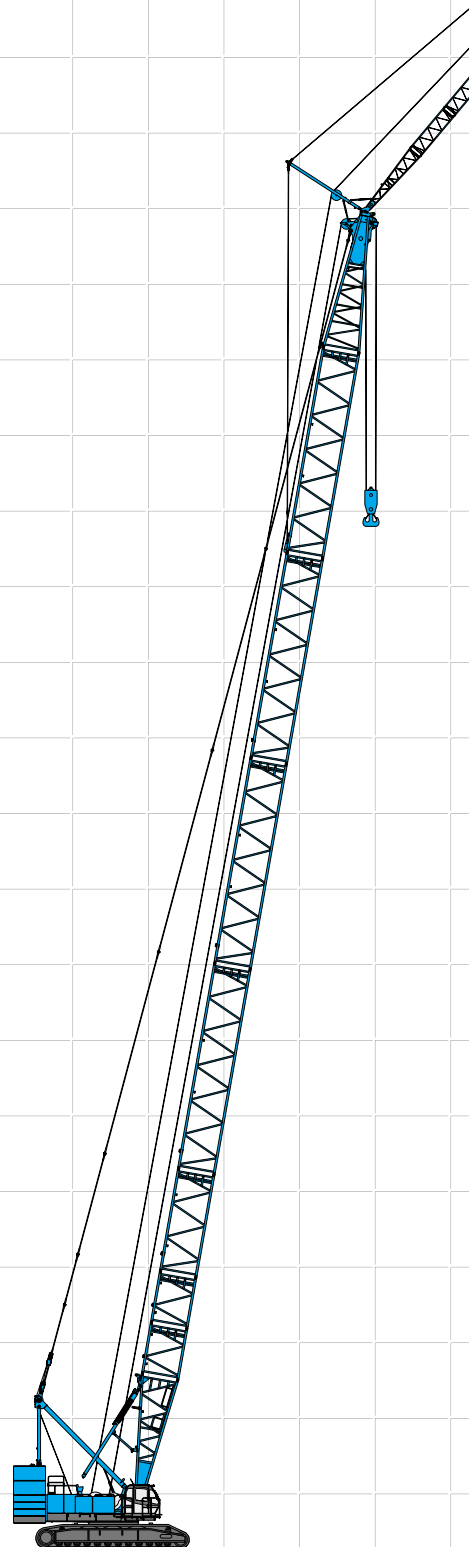
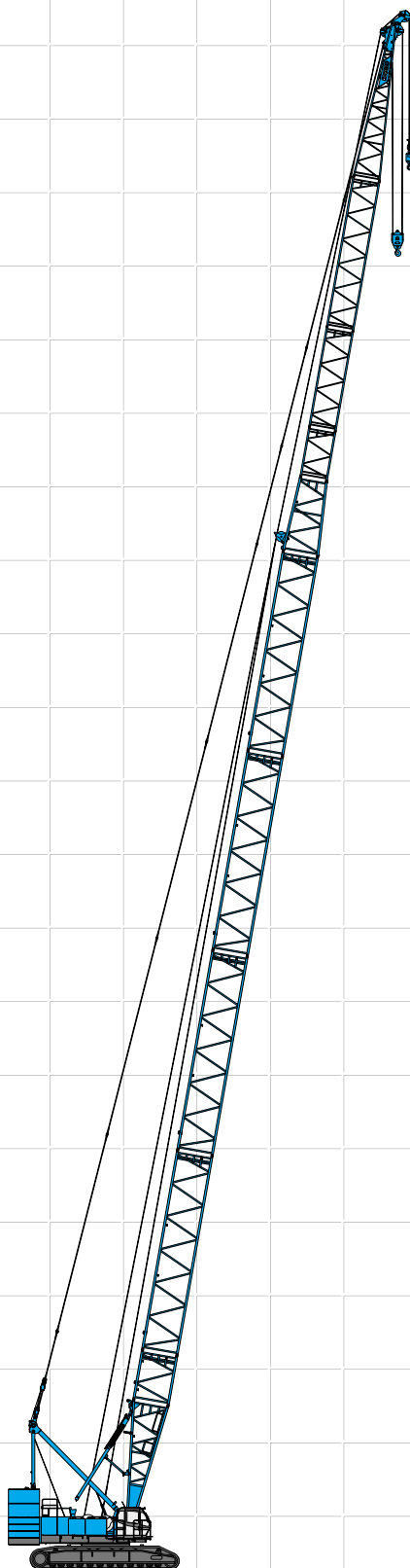
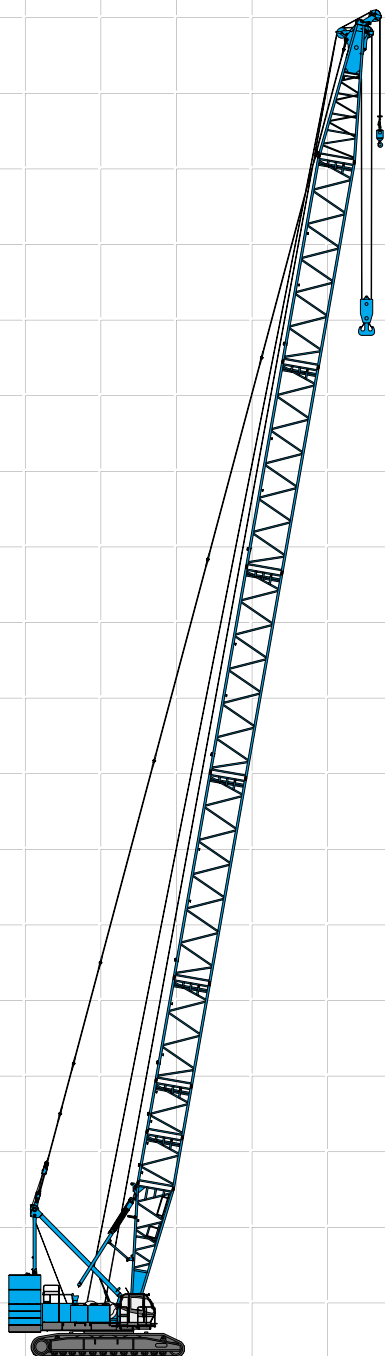


Max. Lifting Capacity:
250 metric ton x 4.6 m
Max. Boom Length:
76.2 m

Long Boom

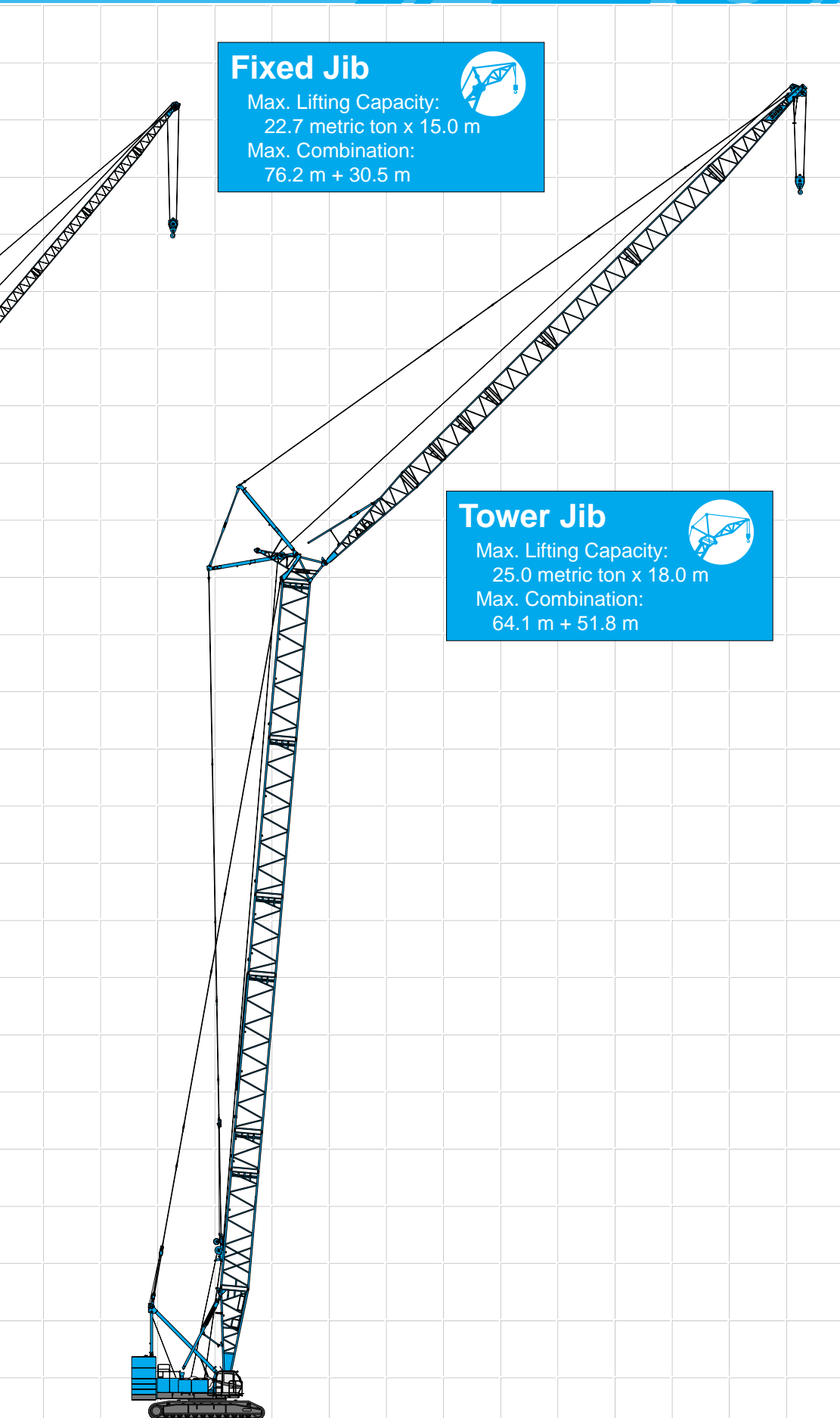


Max. Lifting Capacity:
37.5 metric ton x 14.4 m
Max. Boom Length:
91.4 m





HYDRAULIC CRANES 7/250



Fixed Jib

Max. Lifting Capacity:
22.7 metric ton x 15.0 m

Max. Combination:
76.2 m + 30.5 m



Tower Jib

Max. Lifting Capacity:
25.0 metric ton x 18.0 m

Max. Combination:
64.1 m + 51.8 m



CONTENTS

- Configuration 1
- Specifications 3
- General Dimensions 5
- Boom and Jib Arrangements**
- Crane Boom Arrangements 7
- Long Boom Arrangements 8
- Fixed Jib Arrangements 8
- Tower Arrangements 9
- Tower Jib Arrangements 10
- Working Ranges and Lifting Capacities**
- Crane Boom Working Ranges 12
- Crane Boom Lifting Capacity 13
- Auxiliary Sheave Lifting Capacity for Crane Boom 14
- Long Boom Working Ranges 15
- Long Boom Lifting Capacity 16
- Auxiliary Sheave Lifting Capacity for Long Boom 16
- Fixed Jib Working Ranges 17
- Fixed Jib Lifting Capacities 18
- Tower Jib Working Ranges 21
- Tower Jib Lifting Capacities 23
- Parts and Attachments ... 29



SPECIFICATIONS



Power Plant

Model: Hino diesel engine P11C-UN

Type: Water-cooled, direct fuel injection, with turbocharger
Complies with NRMM (Europe) Stage IIIA and US EPA Tier III.

Displacement: 10.520 liters

Rated Power: 247 kW at 2,000 min⁻¹ {rpm} (ISO)

Max. torque: 1,300 N·m/1,500 min⁻¹

Cooling system: Liquid, recirculating bypass

Starter: 24 V/6.0 kW

Radiator: Corrugated type core, thermostatically controlled

Air cleaner: Dry type with replaceable paper element

Throttle: Electric throttle control, twist grip type

Fuel filter: Replaceable paper element

Batteries: Two 12V, 136Ah/5HR capacity batteries, series connected.

Fuel tank capacity: 400 liters



Hydraulic System

Four variable displacement piston pumps are driven by heavy-duty pump drive. Two of variable displacement pumps are used in the main hook hoist circuit, auxiliary hook hoist circuit, and each propel circuit. One of the other two pumps is used in the boom hoist circuit and third hoist circuit. The other is used in the swing circuit.

Control: Full-flow hydraulic control system for infinitely variable pressure to front and rear drums, boom hoist brakes and clutches. Controls respond instantly to the touch, delivering smooth function operation.

Cooling: Oil-to-air heat exchanger (plate-fin type)

Filtration: Full-flow and bypass type with replaceable element

Electrical system: All wiring corded for easy servicing, individual fused branch circuits.

Max. relief valve pressure:

Load hoist, boom hoist and propel system:

31.9 MPa {325 kgf/cm²}

Swing system: 27.5 MPa {280 kgf/cm²}

Control system: 5.4 MPa {55 kgf/cm²}

Reservoir capacity: 600 liters



Boom Hoisting System

Powered by a hydraulic motor through a planetary reducer.

Brake: A spring-set, hydraulically released multiple-disc brake is mounted on the boom hoist motor and operated through a counter-balance valve.

Drum lock: External ratchet for locking drum.

Drum: Double drum, grooved for 22 mm dia. wire rope.

Line speed: Double line on first drum layer

Hoisting/Lowering: 27 to 2 m/min x 2

Diameter of wire ropes

Boom guy line: 38 mm

Boom hoist reeving: 16 parts of 22 mm dia. high strength wire rope

Boom backstops: Required for all boom lengths



Load Hoist System

Front and rear drums for load hoist powered by a hydraulic variable plunger motors, driven through planetary reducers.

Negative Brake: A spring-set, hydraulically released multiple-disc brake is mounted on the hoist motor and operated through a counter-balance valve. (Positive free fall brake is optional item.)

Drum lock: External ratchet for locking drum.

Drums:

Front drum:

620 mm P.C.D. x 812 mm Lg. wide drum, grooved for 28 mm wire rope. Rope capacity is 390 m working length and 390 m storage length.

Rear drum:

620 mm P.C.D. x 546 mm Lg. wide drum, grooved for 28 mm wire rope. Rope capacity is 220 m working length and 250 m storage length.

Note: Rope lengths listed above denote drum capacity and may differ from actual rope lengths supplied when machinery is shipped.

Line speed: Single line on the first drum layer

Hoisting/Lowering: 110 to 3 m/min

Line Pull:

Rated line pull (Single-line): 132 kN {13.5 tf}



Swing System

Swing unit is powered by hydraulic motor driving spur gears through planetary reducers (2 sets), the swing system provides 360° rotation.

Swing parking brakes: A spring-set, hydraulically released multiple-disc brake is mounted on swing motor.

Swing circle: Single-row ball bearing with an integral internally cut swing gear.

Swing lock: Manually, four position lock for transportation

Swing speed: 2.2 min⁻¹ {rpm}



Upper Structure

Torsion-free precision machined upper frame. All components are located clearly and service friendly. Engine with low noise level.

Counterweight: 97.1 ton



HYDRAULIC CRANES

7250



Cab & Control

Totally enclosed, full vision cab with safety glass, fully adjustable, high backed seat with a head-rest and armrests, and intermittent wiper and window washer (skylight and front window).

Cab fittings:

Air conditioner, convenient compartment (for tool), cup holder, ashtray, cigarette lighter, sun visor, roof blind, tinted glass, floor mat, foot-rest, shoe tray

Controls:

Four adjustable levers for front drum, rear drum, boom drum and swing controls



Lower Structure

Steel-welded carbody with axles. Crawler assemblies are designed with quick disconnect feature for individual removal as a unit from axles. Crawler belt tension is maintained by hydraulic jack force on the track-adjusting bearing block.

Carbody weight: 20.0 ton

Crawler drive: Independent hydraulic propel drive is built into each crawler side frame. Each drive consists of a hydraulic motor propelling a driving tumbler through a planetary gear box. Hydraulic motor and gear box are built into the crawler side frame within the shoe width.

Crawler brakes: Spring-set, hydraulically released parking brakes are built into each propel drive.

Steering mechanism: A hydraulic propel system provides both skid steering (driving one track only) and counter-rotating steering (driving each track in opposite directions).

Track rollers: Sealed track rollers for maintenance-free operation.

Shoes (flat): 68 shoes, 1,070 mm wide each crawler
(Optional 1,220 mm shoe is available)

Max. travel speed: 1.1/0.7 km/h

Max. gradeability: 30%



Weight

Including upper and lower machine, 97.1 ton counterweight and 20.0 ton carbody weight, 15.2 m basic boom (or 36.6 m basic tower + 27.4 m basic tower jib), hook, and other accessories.

Specification	Weight	Ground pressure
Crane boom	Approx. 211 ton,	122 kPa {1.25 kgf/cm ² }
Tower jib	Approx. 220 ton,	128 kPa {1.30 kgf/cm ² }



Attachment

Boom and Jib:

Welded lattice construction using tubular, high-tensile steel chords with pin connections between sections.

Boom and Jib Length

	Min. Length (Min. Combination)	Max. Length (Max. Combination)
Crane Boom	15.2 m	76.2 m
Long Boom	73.2 m	91.4 m
Fixed Jib	42.7 m + 12.2 m	76.2 m + 30.5 m
Tower Jib	36.6 m + 27.4 m	64.1 m + 51.8 m

Main Specifications (Model: 7250-2F)

Crane Boom	
Max. Lifting Capacity	250 t/4.6 m
Max. Length	76.2 m
Long Boom	
Max. Lifting Capacity	37.5 t/14.4 m
Max. Length	91.4 m
Fixed Jib	
Max. Lifting Capacity	22.7 t/15.0 m
Max. Combination	76.2 m + 30.5 m
Tower Jib	
Max. Lifting Capacity	25.0 t/18.0 m
Max. Combination	64.1 m + 51.8 m
Tower Angle	60° ~ 90°
Main & Aux. Winch	
Max. Line Speed	110 m/min (1st layer)
Rated Line Pull (Single Line)	132 kN {13.5 tf}
Wire Rope Diameter	28 mm
Wire Rope Length	390 m (Main) 220 m (Aux.)
Brake Type	Spring-set hydraulically released (Negative)
Free-Fall Brake Type	Wet-type multiple disc brake (Optional)

Working Speed	
Swing Speed	2.2 min ⁻¹ {rpm}
Travel Speed	1.1/0.7 km/h
Power Plant	
Model	Hino P11C-UN
Engine Output	247 kW/2,000 min ⁻¹ {rpm}
Fuel Tank Capacity	400 liters
Hydraulic System	
Main Pumps	4 variable displacement
Max. Pressure	31.9 MPa {325 kgf/cm ² }
Hydraulic Tank Capacity	600 liters
Weight	
Operating Weight*	Approx. 211 t
Ground Pressure*	122 kPa {1.25 kgf/cm ² }
Counterweight	97.1 t (Upper), 20.0 t (Lower)
Transport Weight**	44.5 t

Units are SI units. {} indicates conventional units.

* Including upper and lower machine, 97.1 ton counterweight and 20.0 ton carbody weight, basic boom, hook, and other accessories.

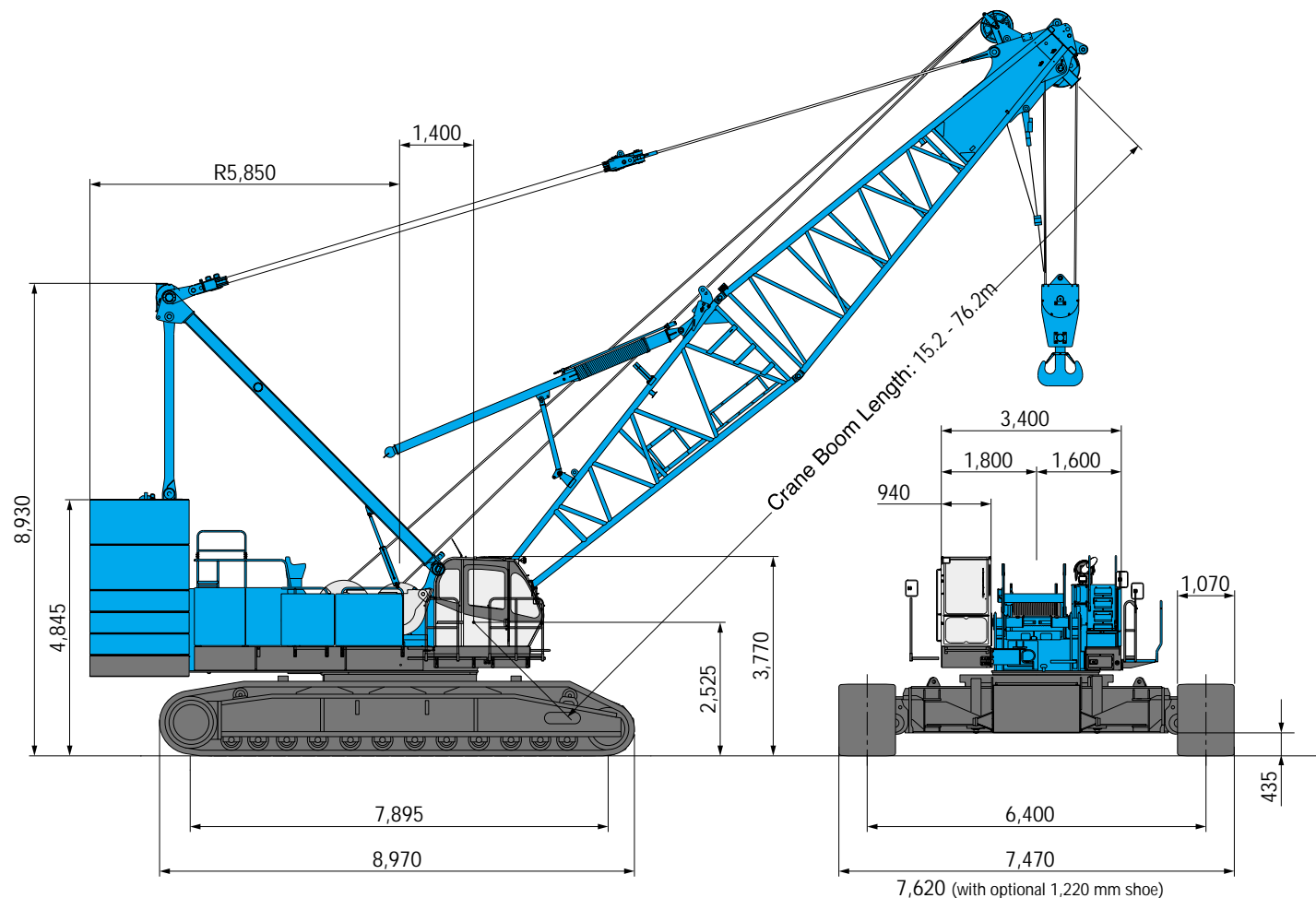
**Base machine with boom base, carbody, gantry, trans-lifter, lower spreader, upper spreader, main and aux. winches including wire rope, and boom hoist winch including wire rope.



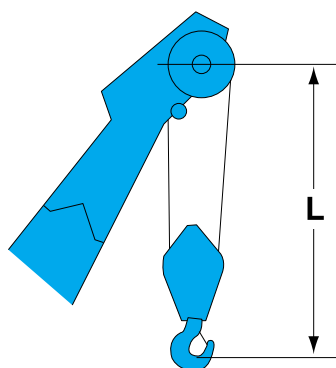
GENERAL DIMENSIONS

Crane Boom

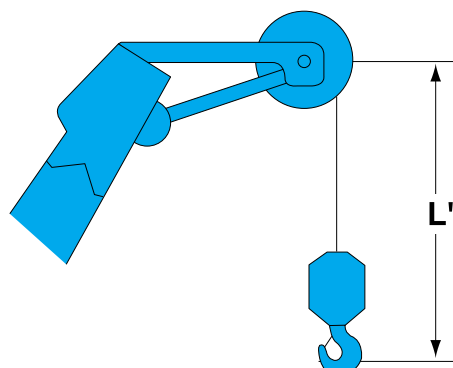
(Unit: mm)



Limit of Hook Lifting



Hook	L
250 t hook	5.3 m
150 t hook	5.9 m
70 t hook	4.9 m
35 t hook	4.7 m



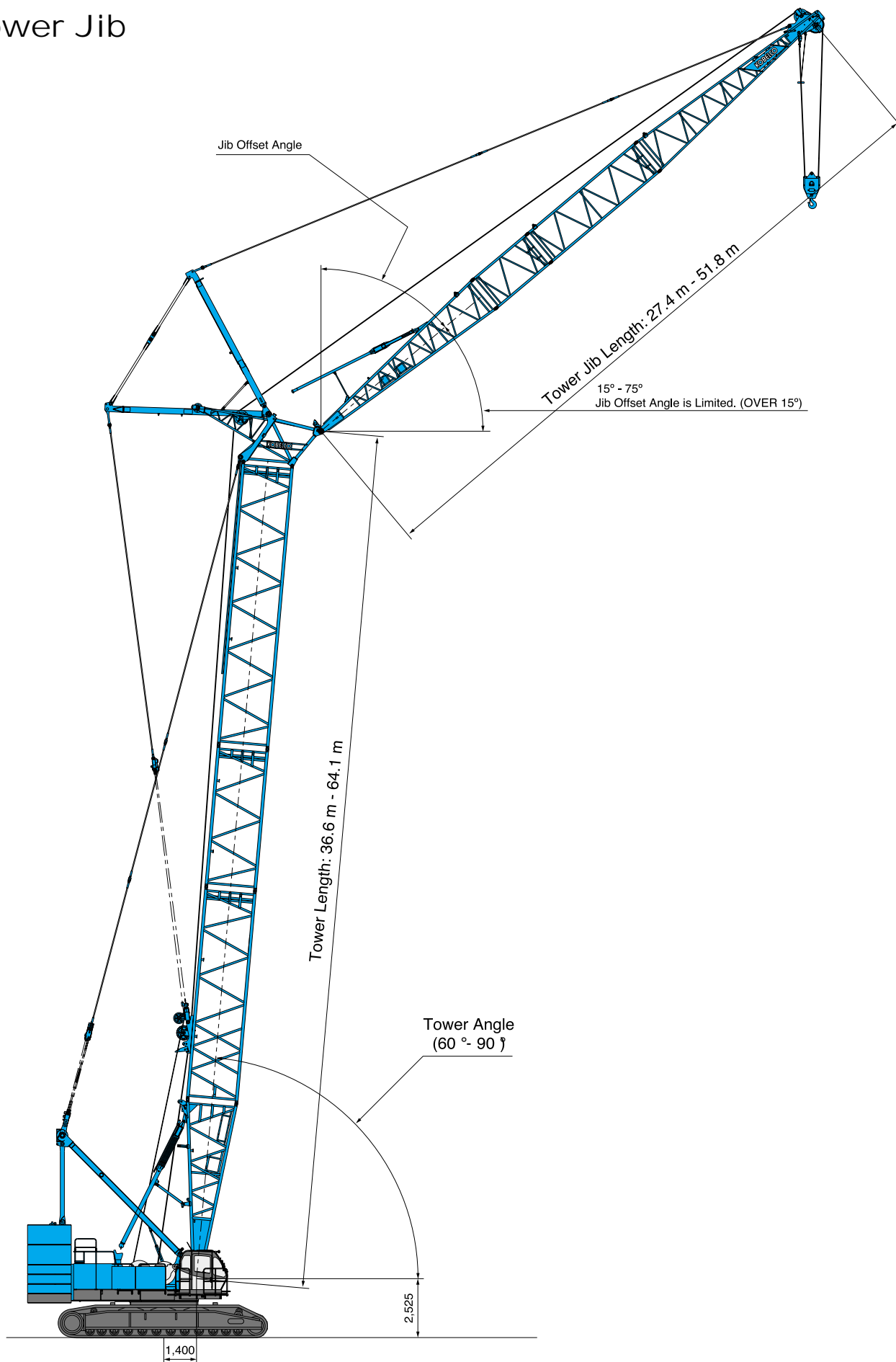
Hook	L'
13.5 t ball hook	3.2 m



HYDRAULIC CRANES 7/250

Tower Jib

(Unit: mm)





BOOM AND JIB ARRANGEMENTS

Crane Boom Arrangements

Boom length m (ft)	Boom arrangement
15.2 (50)	
18.3 (60)	
21.3 (70)	※
24.4 (80)	※
27.4 (90)	※
30.5 (100)	※
33.5 (110)	※
36.6 (120)	※
39.6 (130)	※
42.7 (140)	※
45.7 (150)	※

Boom length m (ft)	Boom arrangement
48.8 (160)	※
51.8 (170)	※
54.9 (180)	※
57.9 (190)	※
61.0 (200)	※
64.0 (210)	※
67.1 (220)	※
70.1 (230)	※
73.2 (240)	※
76.2 (250)	※

↗ mark shows the guy line installing position when the fixed jib is used.

※ Indicates the most flexible combination of insert booms, which can be modified to form all shorter boom arrangements.

Symbol	Boom Length	Remarks
	7.6 m	Boom Base
	7.6 m	Boom Top
	3.0 m	Insert Boom
	6.1 m	Insert Boom
	12.2 m	Insert Boom



HYDRAULIC CRANES 7/250

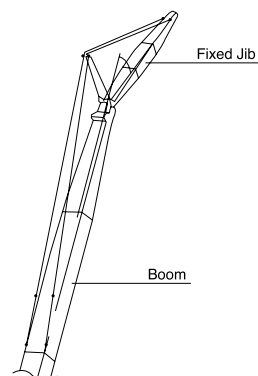
Long Boom Arrangements

Boom length m (ft)	Boom arrangement
73.2 (240)	
76.2 (250)	※
79.2 (260)	※
82.3 (270)	※
85.3 (280)	※
88.4 (290)	※
91.4 (300)	※

Symbol	Long Boom Length	Remarks
	7.6 m	Boom Base
	9.1 m	Tower Jib Top
	3.0 m	Insert Boom
	12.2 m	Insert Boom
	4.6 m	Tapered Boom
	3.0 m	Relay Jib
	3.0 m	Tower Insert Jib
	6.1 m	Tower Insert Jib
	9.1 m	Tower Insert Jib

※ Indicates the most flexible combination of insert long booms, which can be modified to form all shorter long boom arrangements.

Fixed Jib Arrangements



Crane boom length	Jib length m (ft)	Jib arrangement
42.7 m	12.2 (40)	
	18.3 (60)	
76.2 m	24.4 (80)	
	30.5 (100)	

Symbol	Jib Length	Remarks
	4.6 m	Jib Base
	4.6 m	Jib Top
	3.0 m	Insert Jib
	6.1 m	Insert Jib



Tower Arrangements

Tower length m (ft)	Tower arrangement
36.6 (120)	<p>Rail for upper spreader of luffing jib</p>
39.7 (130)	※
42.7 (140)	※
45.8 (150)	※
48.8 (160)	※

Tower length m (ft)	Tower arrangement
51.9 (170)	※
54.9 (180)	※
58.0 (190)	※
61.0 (200)	※
64.1 (210)	※

Symbol	Tower Length	Remarks
	7.6 m	Boom Base
	1.6 m	Tower Cap
	3.0 m	Insert Boom
	6.1 m	Insert Boom
	9.1 m	Special Insert Boom for Tower
	12.2 m	Insert Boom

※ Indicates the most flexible combination of insert towers, which can be modified to form all shorter tower arrangements.



HYDRAULIC CRANES

7/250

Tower Jib Arrangements

Jib length m (ft)	Jib arrangement
27.4 (90)	
30.5 (100)	※
33.5 (110)	※
36.6 (120)	※
39.6 (130)	※

Jib length m (ft)	Jib arrangement
42.7 (140)	※
45.7 (150)	※
48.8 (160)	※
51.8 (170)	※

※ Indicates the most flexible combination of insert tower jibs, which can be modified to form all shorter tower jib arrangements.
 ⚡ mark: indicates position where cable rollers attached.

Symbol	Tower Jib Length	Remarks
	9.1 m	Tower Jib Base
	9.1 m	Tower Jib Top
	3.0 m	Relay Jib
	3.0 m	Tower Insert Jib
	6.1 m	Tower Insert Jib
	9.1 m	Tower Insert Jib

Tower and Jib Combinations and Allowable Tower Angle

Tower length \ Jib length	27.4m	30.5m	33.5m	36.6m	39.6m	42.7m	45.7m	48.8m	51.8m	Pillow plate
36.6m	90 °60 °	90 °60 °	—	—	—	—	—	—	—	—
39.7m	90 °60 °	90 °60 °	90 °60 °	—	—	—	—	—	—	—
42.7m	90 °60 °	90 °60 °	90 °60 °	90 °60 °	—	—	—	—	—	—
45.8m	90 °60 °	90 °60 °	90 °60 °	90 °60 °	90 °60 °	—	—	—	—	—
48.8m	90 °60 °	90 °60 °	90 °60 °	90 °60 °	90 °60 °	90 °60 °	—	—	—	—
51.9m	90 °60 °	90 °60 °	90 °60 °	90 °60 °	90 °60 °	90 °60 °	90 °60 °	—	—	—
54.9m	90 °60 °	90 °60 °	90 °60 °	90 °60 °	90 °60 °	90 °60 °	90 °60 °	90 °60 °	—	—
58.0m	90 °60 °	90 °60 °	90 °60 °	90 °60 °	90 °60 °	90 °60 °	90 °60 °	90 °60 °	90 °70 °	—
61.0m	90 °60 °	90 °60 °	90 °60 °	90 °60 °	90 °60 °	90 °60 °	90 °60 °	90 °60 °	90 °70 °	—
64.1m	90 °60 °	90 °60 °	90 °60 °	90 °60 °	90 °60 °	90 °60 °	90 °70 °	90 °70 °	90 °70 °	Need
Hook	35 ton hook	○	○	○	○	○	○	○	○	
	Ball hook	×	○	○	○	○	○	○	○	



Hook Blocks

A range of hook blocks can be specified, each with a safety latch.

Hooks	Weight (kg)	No. of sheaves	No. of lines and max. rated loads (tons)							
			1	2	3	4	5	6	7	8
250-ton	4,200	11	-	-	-	54.0	-	81.0	-	108.0
150-ton	2,300	6	-	-	40.5	54.0	67.5	81.0	94.5	108.0
70-ton	1,200	3	-	27.0	40.5	54.0	67.5	70.0	-	-
35-ton	900	1	-	27.0	35.0	-	-	-	-	-
13.5-ton ball hook	450	0	13.5	-	-	-	-	-	-	-

Hooks	Weight (kg)	No. of sheaves	No. of lines and max. rated loads (tons)							
			9	10	12	14	16	18	20	22
250-ton	4,200	11	-	135.0	156.0	182.0	200.0	225.0	240.0	250.0
150-ton	2,300	6	121.5	135.0	150.0	-	-	-	-	-
70-ton	1,200	3	-	-	-	-	-	-	-	-
35-ton	900	1	-	-	-	-	-	-	-	-
13.5-ton ball hook	450	0	-	-	-	-	-	-	-	-

Style and Combination of Boom and Jib

	Style	Crane Boom	Long Boom	Fixed Jib	Tower Jib
Crane Boom/Tower	7.6 m boom base	Common use(1)	Common use(1)	Common use(1)	Common use(1)
	7.6 m boom top	Common use(1)	N.A.	Common use(1)	N.A.
	1.6 m tower cap	N.A.	N.A.	N.A.	Luffing Tower only(1)
	3.0 m insert boom	Common use(2)	Common use(1)	Common use(2)	Common use(1)
	6.1 m insert boom	Common use(1)	N.A.	Common use(1)	Common use(3)
	12.2 m insert boom	Common use(4)	Common use(4)	Common use(4)	Common use(2)
	9.1 m special insert boom for tower	N.A.	N.A.	N.A.	Luffing Tower only(1)
	4.6 m tapered boom	N.A.	Long Boom only(1)	N.A.	N.A.
Fixed Jib/Tower Jib	4.6 m jib base	N.A.	N.A.	Fixed Jib only(1)	N.A.
	4.6 m jib top	N.A.	N.A.	Fixed Jib only(1)	N.A.
	3.0 m insert jib	N.A.	N.A.	Fixed Jib only(1)	N.A.
	6.1 m insert jib	N.A.	N.A.	Fixed Jib only(3)	N.A.
	9.1 m tower jib base	N.A.	N.A.	N.A.	Luffing Tower only(1)
	9.1 m tower jib top	N.A.	Common use(1)	N.A.	Common use(1)
	3.0 m relay jib	N.A.	Common use(1)	N.A.	Common use(1)
	3.0 m tower insert jib	N.A.	Common use(2)	N.A.	Common use(2)
	6.1 m tower insert jib	N.A.	Common use	N.A.	Common use(1)
9.1 m tower insert jib	N.A.	Common use(1)	N.A.	Common use(2)	

Note:
 1. Figure in () means the numbers of the maximum usable boom (or jib) respectively.
 2. N.A.: Not applicable

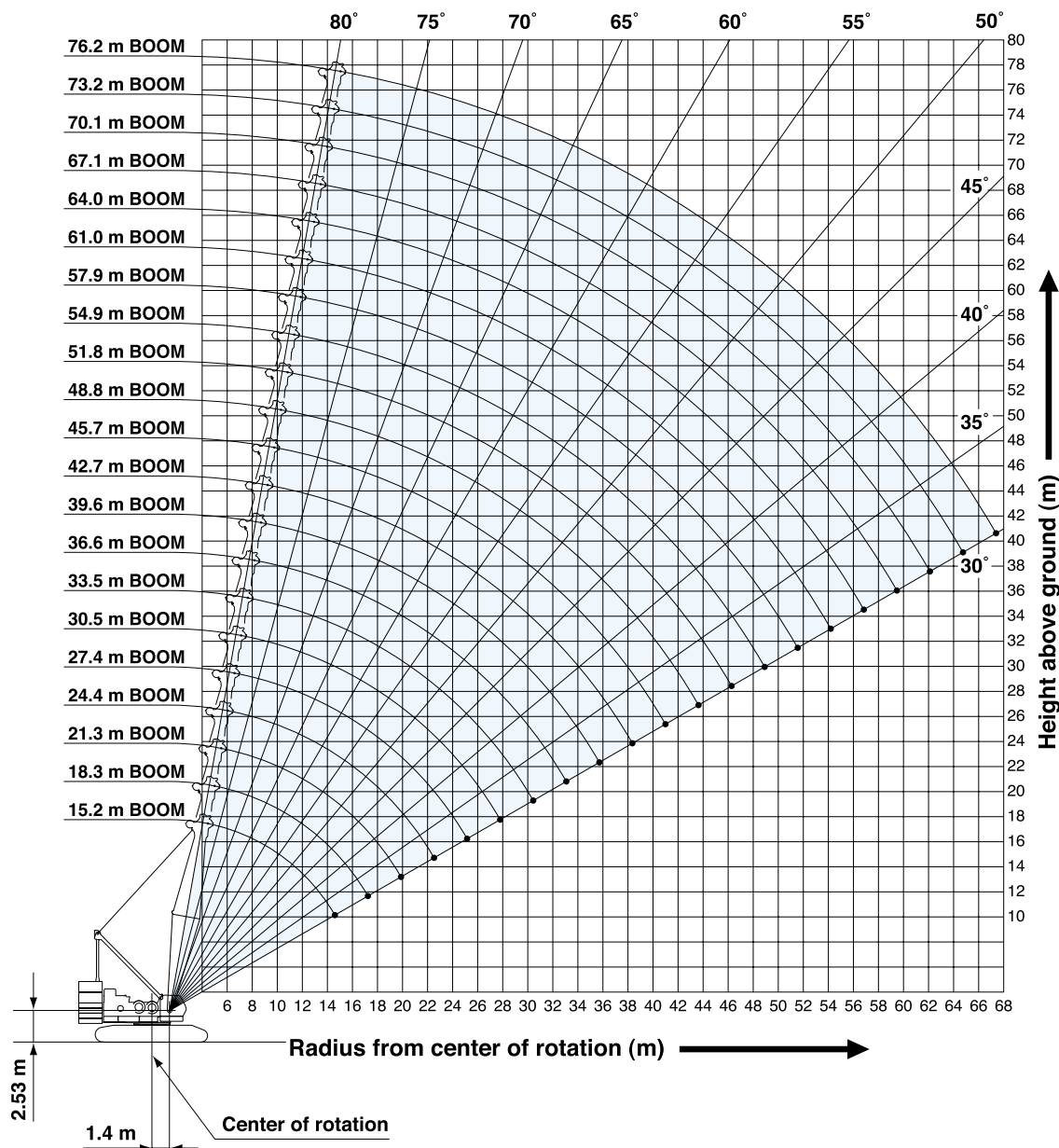
Symbols for Attachments:

Crane Boom	Auxiliary Sheave for Crane Boom	Long Boom	Auxiliary Sheave for Long Boom	Fixed Jib	Tower Jib



WORKING RANGES AND LIFTING CAPACITIES

Crane Boom Working Ranges



NOTES:

1. Ratings according to Japanese Construction Codes for Mobile Cranes and Japanese Safety Ordinance on Cranes, etc.
2. Ratings in metric tons for 360° working area.
3. Operating radius is the horizontal distance from center of rotation to a vertical line through the center of gravity of the load.
4. Weight of hook block(s), slings and other load handling accessories is included in rated load. Their total weight must be subtracted from rated load to obtain weight that can be lifted.
5. Ratings shown are based on freely suspended loads and make no allowance for such factors as wind effect on lifted load, ground conditions out-of-level, operating speeds or any other condition that could be detrimental to the safe operation of this equipment. Operator, therefore, has the responsibility to judge the existing conditions and reduce lifted loads and operating speeds accordingly.
6. Ratings are for operation on a firm and level surface.
7. At radii and boom lengths where no ratings are shown on chart, operation is not intended nor approved.
8. Boom inserts and guy lines must be arranged as shown in the "Operator's Manual".
9. Boom hoist reeving is 16 part line.
10. Gantry must be in raised position for all conditions.
11. Boom backstops are required for all boom lengths.
12. Ratings shown in are determined by the strength of the boom or other structural component.
13. Instruction in the "Operator's Manual" must be strictly observed when operating the machine.
14. Crane boom ratings: Deduct weight of main hook block, slings, and all other load handling accessories from crane boom ratings shown.
15. Auxiliary sheave ratings for crane boom: Deduct weight of ball hook, slings, and all other load handling accessories from auxiliary sheave ratings for crane boom shown.
16. Crane boom lengths for auxiliary sheave mounting are 15.2 m to 76.2 m.
17. Crane boom ratings with auxiliary sheave: Deduct 0.9 ton from crane boom ratings shown. Minimum rated loads must exceed 2.4 ton.



Crane Boom Lifting Capacity

Unit: metric ton

Counterweight: 97.1 t, Carbody weight: 20.0 t

Working radius (m)	Boom length (m)												Working radius (m)	
	15.2	18.3	21.3	24.4	27.4	30.5	33.5	36.6	39.6	42.7	45.7	48.8		
4.6	4.6 m/250.0													4.6
5.0	230.7	219.0	5.5 m/197.6											5.0
6.0	191.5	191.5	191.1	6.1 m/175.6	6.6 m/156.0									6.0
7.0	165.9	165.6	165.2	165.0	154.4	7.1 m/135.0	7.7 m/128.5							7.0
8.0	146.1	145.8	145.4	145.2	144.9	135.0	127.0	8.2 m/117.3	8.7 m/107.1					8.0
9.0	130.4	130.1	129.8	129.6	129.2	129.0	122.9	114.4	106.2	9.2 m/98.6	9.8 m/90.4			9.0
10.0	117.7	117.4	117.1	116.9	116.5	116.3	116.0	111.2	103.3	96.6	89.9	10.3 m/81.0		10.0
12.0	90.5	90.3	90.1	90.0	89.8	89.8	89.5	89.5	89.4	89.2	85.1	79.8		12.0
14.0	69.0	72.7	72.4	72.3	72.1	72.0	71.8	71.8	71.6	71.4	71.2	71.2		14.0
16.0	14.8 m/60.9	60.6	60.3	60.2	60.0	59.9	59.6	59.6	59.4	59.2	59.0	59.0		16.0
18.0		17.5 m/52.2	51.6	51.4	51.2	51.1	50.8	50.8	50.5	50.3	50.1	50.1		18.0
20.0			45.0	44.8	44.5	44.4	44.0	44.0	43.8	43.6	43.4	43.3		20.0
22.0			20.1 m/44.8	39.6	39.3	39.1	38.8	38.8	38.5	38.3	38.1	38.0		22.0
24.0				22.7 m/38.0	35.1	34.9	34.5	34.5	34.2	34.0	33.8	33.7		24.0
26.0					25.4 m/32.6	31.4	31.0	31.0	30.7	30.5	30.3	30.2		26.0
28.0						28.5	28.1	28.1	27.8	27.5	27.3	27.3		28.0
30.0							25.7	25.7	25.3	25.1	24.8	24.8		30.0
32.0							30.7 m/25.0	23.5	23.2	22.9	22.7	22.6		32.0
34.0								33.3 m/22.3	21.4	21.1	20.8	20.7		34.0
36.0									35.9 m/19.8	19.5	19.2	19.1		36.0
38.0										18.1	17.8	17.7		38.0
40.0										38.6 m/17.7	16.5	16.4		40.0
42.0											41.2 m/15.8	15.3		42.0
44.0												43.9 m/14.3		44.0
Reeves	22	18	16	14	12	10	10	9	8	8	7	6		Reeves

Working radius (m)	Boom length (m)										Working radius (m)	
	51.8	54.9	57.9	61.0	64.0	67.1	70.1	73.2	76.2			
10.0	10.8 m/77.0	11.4 m/71.4	11.9 m/65.8									10.0
12.0	75.0	70.4	65.6	12.4 m/61.1	12.9 m/56.3	13.5 m/51.6						12.0
14.0	70.8	66.5	61.9	58.3	54.7	50.8	47.6	14.5 m/43.1	15.1 m/37.1			14.0
16.0	58.7	58.5	58.4	55.2	51.6	48.0	44.9	41.4	35.9			16.0
18.0	49.8	49.6	49.5	49.3	48.7	45.3	42.3	38.9	33.8			18.0
20.0	43.1	42.8	42.7	42.6	42.3	42.2	39.8	36.7	31.8			20.0
22.0	37.7	37.5	37.4	37.2	37.0	36.9	36.6	34.5	29.8			22.0
24.0	33.5	33.2	33.1	32.9	32.6	32.6	32.3	32.1	27.9			24.0
26.0	29.9	29.7	29.5	29.4	29.1	29.0	28.8	28.6	26.2			26.0
28.0	27.0	26.7	26.6	26.4	26.1	26.0	25.8	25.6	24.5			28.0
30.0	24.5	24.2	24.0	23.9	23.6	23.5	23.2	23.1	23.0			30.0
32.0	22.3	22.1	21.9	21.7	21.4	21.3	21.1	20.9	20.8			32.0
34.0	20.4	20.2	20.0	19.8	19.6	19.5	19.2	19.0	18.9			34.0
36.0	18.8	18.5	18.4	18.2	17.9	17.8	17.5	17.3	17.2			36.0
38.0	17.4	17.1	16.9	16.7	16.4	16.3	16.0	15.9	15.8			38.0
40.0	16.1	15.8	15.6	15.4	15.1	15.0	14.7	14.6	14.5			40.0
42.0	14.9	14.7	14.5	14.3	14.0	13.9	13.6	13.4	13.3			42.0
44.0	13.9	13.7	13.4	13.3	12.9	12.8	12.5	12.4	12.2			44.0
46.0	13.0	12.7	12.5	12.3	12.0	11.9	11.6	11.4	11.3			46.0
48.0	46.5 m/12.8	11.9	11.6	11.5	11.2	11.0	10.7	10.6	10.4			48.0
50.0		49.1 m/11.5	10.9	10.7	10.4	10.2	9.9	9.8	9.6			50.0
52.0			51.8 m/10.3	10.0	9.7	9.5	9.2	9.0	8.9			52.0
54.0				9.4	9.0	8.9	8.6	8.4	8.2			54.0
56.0				54.4 m/9.2	8.4	8.3	8.0	7.8	7.6			56.0
58.0					57.1 m/8.2	7.7	7.4	7.2	6.9			58.0
60.0						59.7 m/7.3	6.8	6.6	6.3			60.0
62.0							6.3	6.0	5.7			62.0
64.0							62.3 m/6.2	5.5	5.2			64.0
66.0								65.0 m/5.3	4.7			66.0
68.0									67.6 m/4.3			68.0
Reeves	6	6	5	5	5	4	4	4	3			Reeves

Note:
 Ratings according to Japanese Construction Codes for Mobile Cranes and Japanese Safety Ordinance on Cranes, etc.
 Ratings shown in are determined by the strength of the boom or other structural components.
 Refer to notes P12.



HYDRAULIC CRANES

7250

Auxiliary Sheave Lifting Capacity for Crane Boom (With 70 t Main Hook)

Unit: metric ton

Counterweight: 97.1 t, Carbody weight: 20.0 t

Working radius (m) \ Boom length (m)	15.2	18.3	21.3	24.4	27.4	30.5	33.5	36.6	39.6	42.7	45.7	48.8	Working radius (m) \ Boom length (m)
5.0	5.4 m/13.5	5.8 m/13.5											5.0
6.0	13.5	13.5	6.3 m/13.5	6.9 m/13.5									6.0
7.0	13.5	13.5	13.5	13.5	7.4 m/13.5	7.9 m/13.5							7.0
8.0	13.5	13.5	13.5	13.5	13.5	13.5	8.5 m/13.5						8.0
9.0	13.5	13.5	13.5	13.5	13.5	13.5	13.5	13.5	9.5 m/13.5				9.0
10.0	13.5	13.5	13.5	13.5	13.5	13.5	13.5	13.5	13.5	13.5	10.6 m/13.5	11.1 m/13.5	10.0
12.0	13.5	13.5	13.5	13.5	13.5	13.5	13.5	13.5	13.5	13.5	13.5	13.5	12.0
14.0	13.5	13.5	13.5	13.5	13.5	13.5	13.5	13.5	13.5	13.5	13.5	13.5	14.0
16.0	13.5	13.5	13.5	13.5	13.5	13.5	13.5	13.5	13.5	13.5	13.5	13.5	16.0
18.0	16.1 m/13.5	13.5	13.5	13.5	13.5	13.5	13.5	13.5	13.5	13.5	13.5	13.5	18.0
20.0		18.8 m/13.5	13.5	13.5	13.5	13.5	13.5	13.5	13.5	13.5	13.5	13.5	20.0
22.0			21.4 m/13.5	13.5	13.5	13.5	13.5	13.5	13.5	13.5	13.5	13.5	22.0
24.0				13.5	13.5	13.5	13.5	13.5	13.5	13.5	13.5	13.5	24.0
26.0					13.5	13.5	13.5	13.5	13.5	13.5	13.5	13.5	26.0
28.0					26.7 m/13.5	13.5	13.5	13.5	13.5	13.5	13.5	13.5	28.0
30.0						29.3 m/13.5	13.5	13.5	13.5	13.5	13.5	13.5	30.0
32.0							13.5	13.5	13.5	13.5	13.5	13.5	32.0
34.0								13.5	13.5	13.5	13.5	13.5	34.0
36.0								34.6 m/13.5	13.5	13.5	13.5	13.5	36.0
38.0									37.2 m/13.5	13.5	13.5	13.5	38.0
40.0										39.9 m/13.5	13.5	13.5	40.0
42.0											13.5	13.5	42.0
44.0											42.5 m/13.4	12.7	44.0
46.0												45.2 m/12.0	46.0
Reeves	1	1	1	1	1	1	1	1	1	1	1	1	Reeves

Working radius (m) \ Boom length (m)	51.8	54.9	57.9	61.0	64.0	67.1	70.1	73.2	76.2	Working radius (m) \ Boom length (m)
10.0	11.6 m/13.5									10.0
12.0	13.5	12.2 m/13.5	12.7 m/13.5	13.2 m/13.5	13.7 m/13.5					12.0
14.0	13.5	13.5	13.5	13.5	13.5	14.3 m/13.5	14.8 m/13.5	15.3 m/13.5	15.9 m/13.5	14.0
16.0	13.5	13.5	13.5	13.5	13.5	13.5	13.5	13.5	13.5	16.0
18.0	13.5	13.5	13.5	13.5	13.5	13.5	13.5	13.5	13.5	18.0
20.0	13.5	13.5	13.5	13.5	13.5	13.5	13.5	13.5	13.5	20.0
22.0	13.5	13.5	13.5	13.5	13.5	13.5	13.5	13.5	13.5	22.0
24.0	13.5	13.5	13.5	13.5	13.5	13.5	13.5	13.5	13.5	24.0
26.0	13.5	13.5	13.5	13.5	13.5	13.5	13.5	13.5	13.5	26.0
28.0	13.5	13.5	13.5	13.5	13.5	13.5	13.5	13.5	13.5	28.0
30.0	13.5	13.5	13.5	13.5	13.5	13.5	13.5	13.5	13.5	30.0
32.0	13.5	13.5	13.5	13.5	13.5	13.5	13.5	13.5	13.5	32.0
34.0	13.5	13.5	13.5	13.5	13.5	13.5	13.5	13.5	13.5	34.0
36.0	13.5	13.5	13.5	13.5	13.5	13.5	13.5	13.5	13.5	36.0
38.0	13.5	13.5	13.5	13.5	13.5	13.5	13.5	13.5	13.5	38.0
40.0	13.5	13.5	13.5	13.5	13.5	13.5	13.2	13.1	13.0	40.0
42.0	13.4	13.2	13.0	12.8	12.5	12.4	12.1	11.9	11.8	42.0
44.0	12.4	12.2	11.9	11.8	11.4	11.3	11.0	10.9	10.7	44.0
46.0	11.5	11.2	11.0	10.8	10.5	10.4	10.1	9.9	9.8	46.0
48.0	47.8 m/10.7	10.4	10.1	10.0	9.7	9.5	9.2	9.1	8.9	48.0
50.0		9.6	9.4	9.2	8.9	8.7	8.4	8.3	8.1	50.0
52.0		50.4 m/9.4	8.7	8.5	8.2	8.0	7.7	7.5	7.4	52.0
54.0			53.1 m/8.3	7.9	7.5	7.4	7.1	6.9	6.7	54.0
56.0				55.7 m/7.4	6.9	6.8	6.5	6.3	6.1	56.0
58.0					6.3	6.2	5.9	5.7	5.4	58.0
60.0					58.4 m/6.2	5.6	5.3	5.1	4.8	60.0
62.0						61.0 m/5.3	4.8	4.5	4.2	62.0
64.0							63.6 m/4.4	4.0	3.7	64.0
66.0								3.5	3.2	66.0
68.0								66.3 m/3.4	2.7	68.0
70.0									68.9 m/2.5	70.0
Reeves	1	1	1	1	1	1	1	1	1	Reeves

Note:

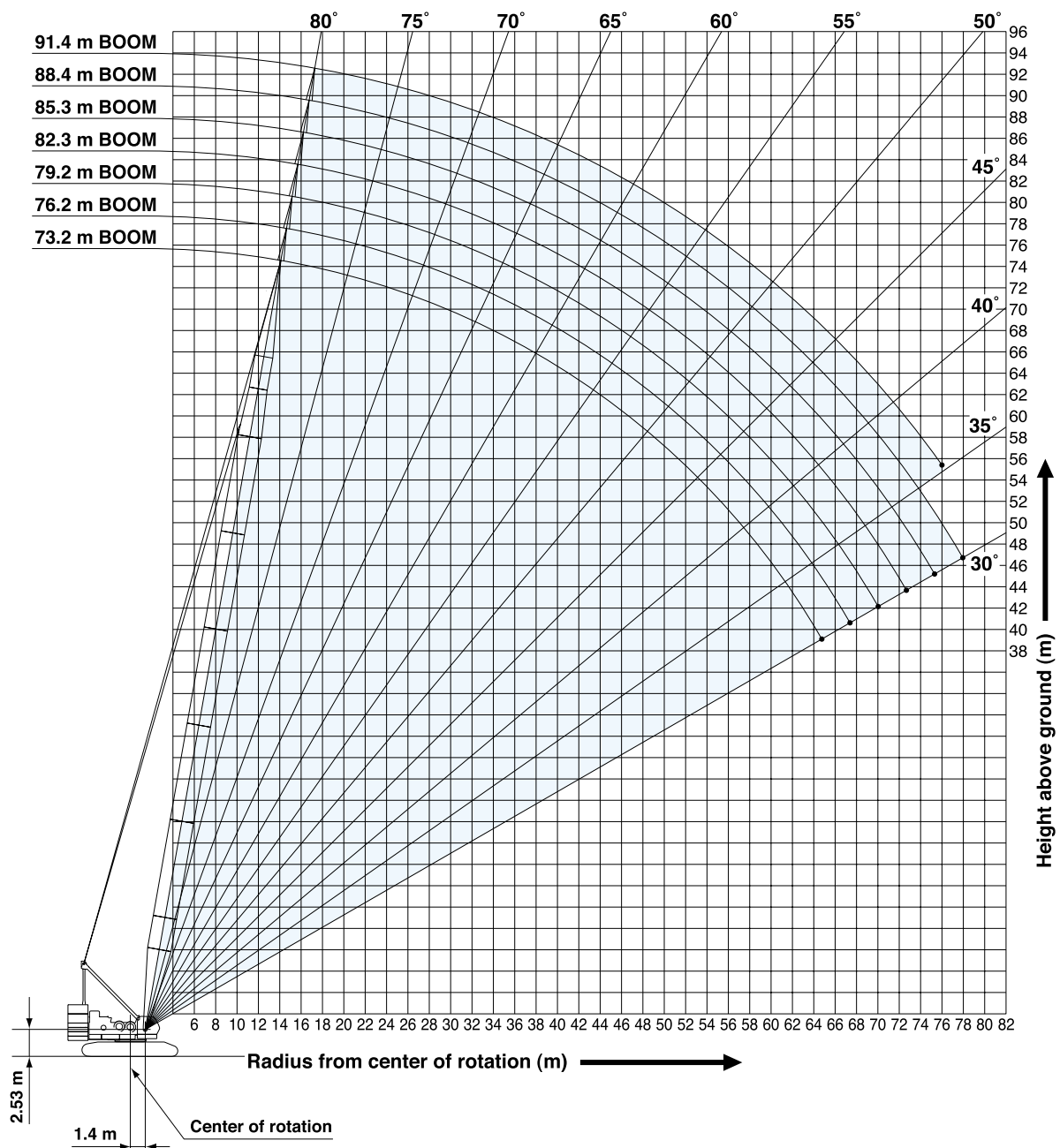
Ratings according to Japanese Construction Codes for Mobile Cranes and Japanese Safety Ordinance on Cranes, etc.

Ratings shown in are determined by the strength of the boom or other structural components.

Refer to notes P12.

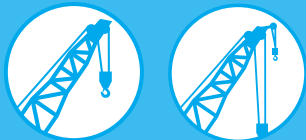


Long Boom Working Ranges



NOTES:

- Ratings according to Japanese Construction Codes for Mobile Cranes and Japanese Safety Ordinance on Cranes, etc.
- Ratings in metric tons for 360° working area.
- Operating radius is the horizontal distance from center of rotation to a vertical line through the center of gravity of the load.
- Weight of hook block(s), slings and other load handling accessories is included in rated load. Their total weight must be subtracted from rated load to obtain weight that can be lifted.
- Ratings shown are based on freely suspended loads and make no allowance for such factors as wind effect on lifted load, ground conditions out-of-level, operating speeds or any other condition that could be detrimental to the safe operation of this equipment. Operator, therefore, has the responsibility to judge the existing conditions and reduce lifted loads and operating speeds accordingly.
- Ratings are for operation on a firm and level surface.
- At radii and boom lengths where no ratings are shown on chart, operation is not intended nor approved.
- Boom inserts and guy lines must be arranged as shown in the "Operator's Manual".
- Gantry must be in raised position for all conditions.
- Boom backstops are required for all boom lengths.
- Ratings shown in are determined by the strength of the boom or other structural component.
- Instruction in the "Operator's Manual" must be strictly observed when operating the machine.
- Long boom ratings: Deduct weight of hook block, slings, and all other load handling accessories from long boom ratings shown.
- Auxiliary sheave ratings for long boom: Deduct weight of ball hook, slings, and all other load handling accessories from auxiliary sheave ratings for long boom shown.
- Long boom lengths for auxiliary sheave mounting are 73.2 m to 88.4 m.
- Long boom ratings with auxiliary sheave: Deduct 0.9 ton from long boom ratings shown. Minimum rated loads must exceed 2.4 ton.



7250

Long Boom Lifting Capacity

Working radius (m)	Boom length (m)							Working radius (m)
	73.2	76.2	79.2	82.3	85.3	88.4	91.4	
14.0	14.4 m/37.5	14.9 m/34.5	15.4 m/32.6					14.0
16.0	36.0	33.5	32.1	31.2	16.5 m/25.0	17.0 m/25.0	17.6 m/21.5	16.0
18.0	34.4	31.9	30.6	29.6	25.0	25.0	21.2	18.0
20.0	32.9	30.4	29.1	28.2	25.0	24.1	20.0	20.0
22.0	31.6	29.1	27.9	26.9	25.0	23.0	18.9	22.0
24.0	30.4	27.9	26.8	25.7	24.2	22.0	17.8	24.0
26.0	28.8	26.5	25.6	24.6	23.2	21.1	16.9	26.0
28.0	26.2	25.2	24.5	23.6	22.3	20.1	16.0	28.0
30.0	23.8	23.6	23.3	22.6	21.1	19.1	15.3	30.0
32.0	21.8	21.7	21.6	21.5	19.9	18.1	14.5	32.0
34.0	19.9	19.9	19.7	19.7	18.7	17.1	13.8	34.0
36.0	18.3	18.3	18.2	18.1	17.7	16.1	13.1	36.0
38.0	16.9	16.8	16.7	16.7	16.5	15.1	12.5	38.0
40.0	15.6	15.6	15.4	15.4	15.4	14.2	11.8	40.0
42.0	14.5	14.5	14.3	14.3	14.3	13.4	11.2	42.0
44.0	13.4	13.4	13.2	13.2	13.2	12.5	10.7	44.0
46.0	12.5	12.5	12.3	12.3	12.2	11.8	10.2	46.0
48.0	11.6	11.5	11.4	11.4	11.3	11.1	9.8	48.0
50.0	10.7	10.7	10.6	10.5	10.5	10.3	9.4	50.0
52.0	10.0	10.0	9.9	9.8	9.8	9.6	8.9	52.0
54.0	9.3	9.3	9.1	9.1	9.0	9.0	8.5	54.0
56.0	8.6	8.6	8.5	8.4	8.4	8.4	7.8	56.0
58.0	8.0	8.0	7.8	7.8	7.7	7.7	7.2	58.0
60.0	7.4	7.3	7.2	7.2	7.1	7.1	6.7	60.0
62.0	6.8	6.7	6.7	6.6	6.6	6.6	6.1	62.0
64.0	6.3	6.1	6.1	6.1	6.0	6.0	5.6	64.0
66.0	64.9 m/6.1	5.6	5.6	5.6	5.6	5.6	5.1	66.0
68.0		67.5 m/5.4	5.3	5.2	5.2	5.2	4.6	68.0
70.0			4.8	4.7	4.7	4.7	4.1	70.0
72.0			70.2 m/4.8	4.3	4.3	4.3	3.6	72.0
74.0				72.8 m/4.2	3.9	3.9	3.1	74.0
76.0					74.5 m/3.7	3.5	2.6	76.0
78.0						3.2		78.0
80.0						78.1 m/3.2		80.0
Reeves	3	3	3	3	2	2	2	Reeves

Unit: metric ton

Counterweight: 97.1 t, Carbody weight: 20.0 t

Note:

Ratings according to Japanese Construction Codes for Mobile Cranes and Japanese Safety Ordinance on Cranes, etc.

Ratings shown in are determined by the strength of the boom or other structural components.

Refer to notes P15.

Auxiliary Sheave Lifting Capacity for Long Boom (Without Main Hook)

Working radius (m)	Boom length (m)							Working radius (m)
	73.2	76.2	79.2	82.3	85.3	88.4		
14.0	15.1 m/13.5	15.7 m/13.5						14.0
16.0	13.5	13.5	16.2 m/13.5	16.7 m/13.5	17.3 m/13.5	17.8 m/13.5		16.0
18.0	13.5	13.5	13.5	13.5	13.5	13.5		18.0
20.0	13.5	13.5	13.5	13.5	13.5	13.5		20.0
22.0	13.5	13.5	13.5	13.5	13.5	13.5		22.0
24.0	13.5	13.5	13.5	13.5	13.5	13.5		24.0
26.0	13.5	13.5	13.5	13.5	13.5	13.5		26.0
28.0	13.5	13.5	13.5	13.5	13.5	13.5		28.0
30.0	13.5	13.5	13.5	13.5	13.5	13.5		30.0
32.0	13.5	13.5	13.5	13.5	13.5	13.5		32.0
34.0	13.5	13.5	13.5	13.5	13.5	13.5		34.0
36.0	13.5	13.5	13.5	13.5	13.5	13.5		36.0
38.0	13.5	13.5	13.5	13.5	13.5	13.5		38.0
40.0	13.5	13.5	13.5	13.5	13.5	13.5		40.0
42.0	13.5	13.5	13.5	13.5	13.5	13.5		42.0
44.0	13.1	13.1	12.9	12.9	12.9	12.2		44.0
46.0	12.2	12.2	12.0	12.0	11.9	11.5		46.0
48.0	11.3	11.2	11.1	11.1	11.0	10.8		48.0
50.0	10.4	10.4	10.3	10.2	10.2	10.0		50.0
52.0	9.7	9.7	9.6	9.5	9.5	9.3		52.0
54.0	9.0	9.0	8.8	8.8	8.7	8.7		54.0
56.0	8.3	8.3	8.2	8.1	8.1	8.1		56.0
58.0	7.7	7.7	7.5	7.5	7.4	7.4		58.0
60.0	7.1	7.0	6.9	6.9	6.8	6.8		60.0
62.0	6.5	6.4	6.4	6.3	6.3	6.3		62.0
64.0	6.0	5.8	5.8	5.8	5.7	5.7		64.0
66.0	5.5	5.3	5.3	5.3	5.3	5.3		66.0
68.0		4.8	5.0	4.9	4.9	4.9		68.0
70.0		68.7 m/4.6	4.5	4.4	4.4	4.4		70.0
72.0			71.3 m/4.2	4.0	4.0	4.0		72.0
74.0				3.6	3.6	3.6		74.0
76.0					3.2	3.2		76.0
78.0					76.6 m/3.1	2.9		78.0
Reeves	1	1	1	1	1	1		Reeves

Unit: metric ton

Counterweight: 97.1 t, Carbody weight: 20.0 t

Note:

Ratings according to Japanese Construction Codes for Mobile Cranes and Japanese Safety Ordinance on Cranes, etc.

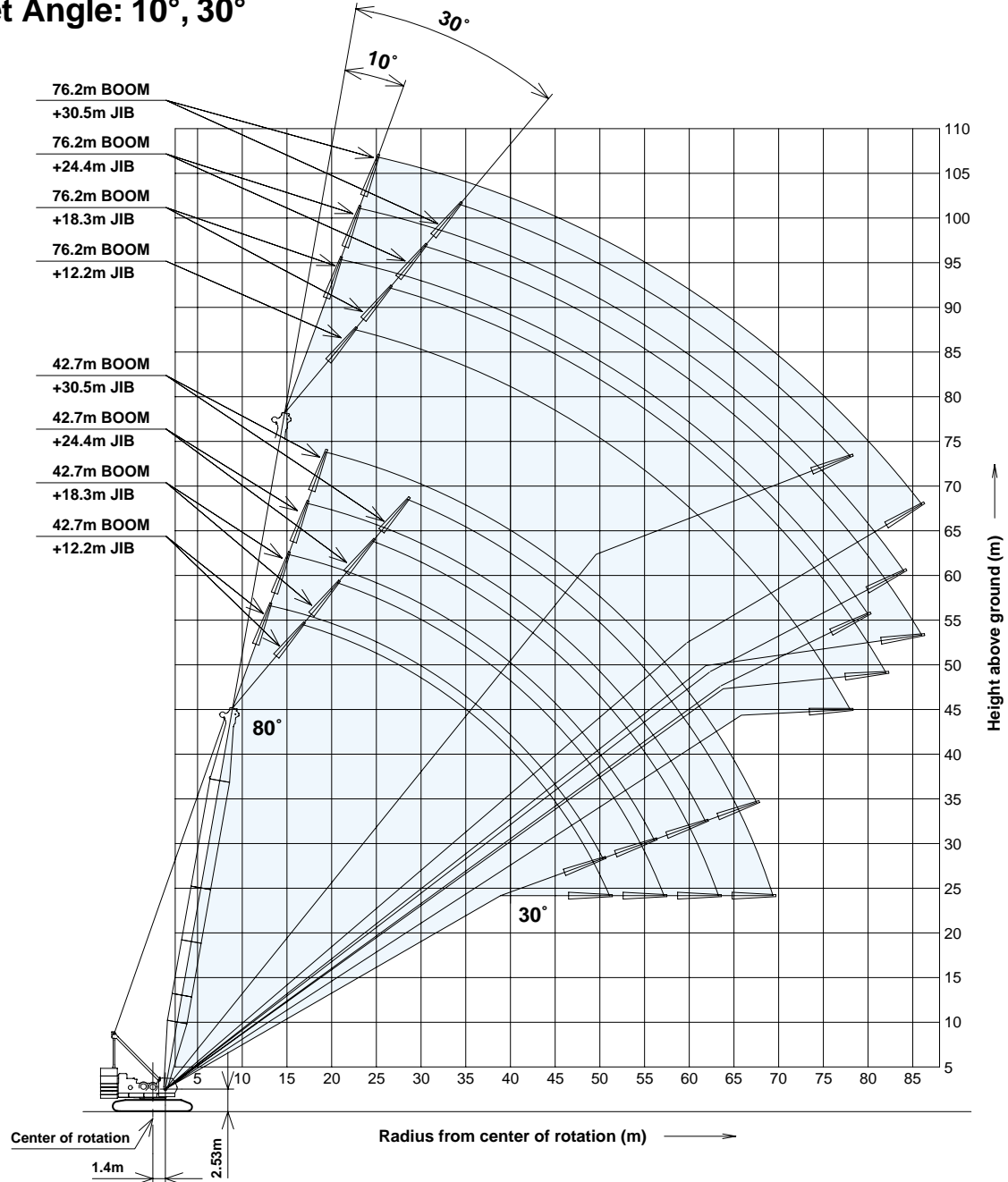
Ratings shown in are determined by the strength of the boom or other structural components.

Refer to notes P15.



Fixed Jib Working Ranges

Jib Offset Angle: 10°, 30°



NOTES:

1. Ratings according to Japanese Construction Codes for Mobile Cranes and Japanese Safety Ordinance on Cranes, etc.
2. Ratings in metric tons for 360° working area.
3. Operating radius is the horizontal distance from center of rotation to a vertical line through the center of gravity of the load.
4. Weight of hook block(s), slings and other load handling accessories is included in rated load. Their total weight must be subtracted from rated load to obtain weight that can be lifted.
5. Ratings shown are based on freely suspended loads and make no allowance for such factors as wind effect on lifted load, ground conditions out-of-level, operating speeds or any other condition that could be detrimental to the safe operation of this equipment. Operator, therefore, has the responsibility to judge the existing conditions and reduce lifted loads and operating speeds accordingly.
6. Ratings are for operation on a firm and level surface.
7. At radii and boom lengths where no ratings are shown on chart, operation is not intended nor approved.
8. Boom/ jib inserts and guy lines must be arranged as shown in the "Operator's Manual".
9. Gantry must be in raised position for all conditions.
10. Boom backstops are required for all boom lengths.
11. Ratings shown in are determined by the strength of the boom or other structural component.
12. When erecting or lowering the boom length of 76.2 m, the pillow plate for erection must be placed at the end of crawlers.
13. Instruction in the "Operator's Manual" must be strictly observed when operating the machine.
14. Fixed jib ratings: Deduct weight of jib hook block, slings, and all other load handling accessories from fixed jib ratings shown.
15. Crane boom lengths for fixed jib mounting are 42.7 m to 76.2 m.
16. One part of line on hook is not allowed to use for 12.2 m jib length with offset angle 10 degrees.



HYDRAULIC CRANES

7250

Fixed Jib Lifting Capacities (Without Main Hook)

Unit: metric ton

Jib Offset Angle: 10°

Counterweight: 97.1 t, Carbody weight: 20.0 t

Boom length (m)	42.7				48.8				54.9				61.0			Boom length (m)	
Jib length (m)	12.2	18.3	24.4	30.5	12.2	18.3	24.4	30.5	12.2	18.3	24.4	30.5	18.3	24.4	30.5	Jib length (m)	
Working radius (m)	12.0	12.9 m/22.7			13.9 m/22.7											12.0	
	14.0	22.4	15.3 m/15.3		22.7				15.0 m/22.7							14.0	
	16.0	22.0	15.1	17.1 m/8.6	22.2	16.3 m/15.2			22.5	17.4 m/13.5						16.0	
	18.0	21.6	14.8	8.5	18.5 m/5.1	21.8	15.0	18.1 m/8.5	19.6 m/5.1	22.1	13.5	19.2 m/8.5		18.4 m/13.5		18.0	
	20.0	21.1	14.6	8.3	5.0	21.4	14.7	8.4	5.0	21.7	13.5	8.5	20.6 m/5.0	13.5	20.3 m/8.5	21.7 m/5.0	20.0
	22.0	20.8	14.3	8.2	4.9	21.1	14.5	8.3	4.9	21.4	13.5	8.3	5.0	13.5	8.4	5.0	22.0
	24.0	20.4	14.0	8.1	4.8	20.7	14.2	8.2	4.8	21.0	13.5	8.2	4.9	13.5	8.3	4.9	24.0
	26.0	20.1	13.8	7.8	4.6	20.4	14.0	8.0	4.7	20.7	13.5	8.1	4.8	13.5	8.2	4.8	26.0
	28.0	19.8	13.5	7.5	4.4	20.1	13.7	7.8	4.5	20.4	13.5	8.0	4.7	13.5	8.1	4.8	28.0
	30.0	19.5	13.3	7.3	4.2	19.9	13.5	7.5	4.4	20.2	13.5	7.7	4.5	13.5	7.9	4.6	30.0
	34.0	18.8	12.9	6.8	3.9	19.1	13.1	7.1	4.0	19.7	13.3	7.3	4.2	13.5	7.5	4.3	34.0
	38.0	17.4	11.9	6.5	3.6	17.8	12.8	6.7	3.8	17.4	13.0	6.9	3.9	13.2	7.1	4.0	38.0
	42.0	15.8	10.9	6.1	3.4	15.5	11.7	6.4	3.5	14.9	12.6	6.6	3.7	12.9	6.8	3.8	42.0
	46.0	14.0	10.0	5.9	3.2	13.4	10.8	6.1	3.3	12.8	11.6	6.3	3.5	12.3	6.5	3.6	46.0
	50.0	12.2	9.3	5.6	3.0	11.7	10.0	5.8	3.2	11.1	10.7	6.0	3.3	11.1	6.2	3.4	50.0
	54.0	50.3 m/12.1	8.7	5.4	2.9	10.3	9.4	5.6	3.0	9.7	10.0	5.8	3.1	9.6	6.0	3.2	54.0
	58.0		56.1 m/8.4	5.3	2.7	55.5 m/9.8	8.8	5.4	2.9	8.5	8.9	5.6	3.0	8.4	5.8	3.1	58.0
	62.0			61.7 m/5.1	2.6		61.4 m/8.4	5.3	2.7	60.8 m/7.8	7.8	5.4	2.8	7.3	5.6	3.0	62.0
	66.0				2.5			5.2	2.6		6.9	5.3	2.7	6.4	5.4	2.8	66.0
	70.0				67.2 m/2.5			67.0 m/5.1	2.6		66.6 m/6.8	5.2	2.6	5.6	5.3	2.7	70.0
74.0							72.5 m/2.5				72.3 m/5.1	2.6	71.9 m/5.2	5.2	2.6	74.0	
78.0												77.7 m/2.5		77.6 m/4.7	2.6	78.0	
82.0															2.5	82.0	
84.0															83.0 m/2.5	84.0	
Reeves	2	2	1	1	2	2	1	1	2	1	1	1	1	1	1	Reeves	

Boom length (m)	67.1			73.2			76.2			Boom length (m)	
Jib length (m)	18.3	24.4	30.5	18.3	24.4	30.5	18.3	24.4	30.5	Jib length (m)	
Working radius (m)	16.0									16.0	
	18.0	19.4 m/13.5								18.0	
	20.0	13.5	21.4 m/8.5		20.5 m/13.5			21.1 m/13.5		20.0	
	22.0	13.5	8.5	22.7 m/5.0	13.5	22.3 m/8.5	23.8 m/5.0	13.5	22.9 m/8.5	22.0	
	24.0	13.5	8.3	5.0	13.5	8.4	5.0	13.5	8.4	24.4 m/5.0	24.0
	26.0	13.5	8.2	4.9	13.5	8.3	4.9	13.5	8.3	4.9	26.0
	28.0	13.5	8.1	4.8	13.5	8.2	4.8	13.5	8.2	4.8	28.0
	30.0	13.5	8.1	4.7	13.5	8.1	4.8	13.5	8.1	4.8	30.0
	34.0	13.5	7.7	4.4	13.5	7.8	4.5	13.5	7.9	4.6	34.0
	38.0	13.3	7.3	4.2	13.5	7.5	4.3	13.5	7.5	4.3	38.0
	42.0	13.0	7.0	3.9	13.2	7.1	4.0	13.3	7.2	4.1	42.0
	46.0	12.2	6.7	3.7	11.7	6.8	3.8	11.4	6.9	3.9	46.0
	50.0	10.5	6.4	3.5	10.0	6.6	3.6	9.7	6.7	3.7	50.0
	54.0	9.0	6.2	3.3	8.5	6.3	3.5	8.2	6.4	3.5	54.0
	58.0	7.8	6.0	3.2	7.3	6.1	3.3	7.0	6.2	3.3	58.0
	62.0	6.7	5.8	3.1	6.2	5.9	3.2	5.9	6.0	3.2	62.0
	66.0	5.8	5.6	2.9	5.3	5.7	3.0	5.0	5.5	3.1	66.0
	70.0	5.0	5.4	2.8	4.5	5.0	2.9	4.1	4.7	3.0	70.0
	74.0	4.3	4.7	2.7	3.7	4.3	2.8	3.4	4.0	2.9	74.0
	78.0	77.2 m/3.8	4.1	2.6	3.1	3.6	2.7	2.8	3.3	2.8	78.0
82.0		3.5	2.6	2.5	3.0	2.6	80.0 m/2.5	2.7	2.7	82.0	
86.0		82.8 m/3.3	2.5		2.5	2.6		84.0 m/2.4	2.5	86.0	
90.0			88.3 m/2.5			88.0 m/2.4				90.0	
Reeves	1	1	1	1	1	1	1	1	1	Reeves	

Note:

Ratings according to Japanese Construction Codes for Mobile Cranes and Japanese Safety Ordinance on Cranes, etc. Ratings shown in are determined by the strength of the boom or other structural components.

Refer to notes P17.

1 One part of line on hook is not allowed to use for 12.2 m jib length with offset angle 10 degrees.

2 Crane boom lengths for 12.2 m fixed jib with offset angle 10 degrees mounting are 42.7 m to 57.9 m.



Unit: metric ton

Jib Offset Angle: 30°

Counterweight: 97.1 t, Carbody weight: 20.0 t

Boom length (m)	42.7				48.8				54.9				61.0				Boom length (m)
Jib length (m)	12.2	18.3	24.4	30.5	12.2	18.3	24.4	30.5	12.2	18.3	24.4	30.5	12.2	18.3	24.4	30.5	Jib length (m)
16.0	16.5 m/18.4				17.6 m/18.4												16.0
18.0	17.7				18.2				18.7 m/18.4				19.8 m/13.5				18.0
20.0	16.8	20.7 m/12.1			17.3	21.7 m/12.1			17.8				13.5				20.0
22.0	16.0	11.8			16.6	12.1			17.1	22.8 m/12.1			13.5	23.9 m/12.1			22.0
24.0	15.3	11.3	24.4 m/6.3		15.9	11.6	25.4 m/6.3		16.4	11.9			13.5	12.1			24.0
26.0	14.7	10.7	6.2	27.7 m/3.3	15.2	11.1	6.2		15.7	11.4	26.5 m/6.2		13.5	11.7	27.6 m/6.2		26.0
28.0	14.1	10.3	6.0	3.3	14.7	10.6	6.1	28.8 m/3.3	15.2	11.0	6.2	29.9 m/3.3	13.5	11.3	6.2		28.0
30.0	13.6	9.9	5.9	3.2	14.1	10.2	6.0	3.2	14.7	10.6	6.0	3.3	13.5	10.9	6.1	30.9 m/3.3	30.0
34.0	12.7	9.2	5.6	3.0	13.2	9.5	5.7	3.1	13.8	9.9	5.8	3.1	13.5	10.2	5.9	3.2	34.0
38.0	12.0	8.6	5.4	2.9	12.5	8.9	5.5	2.9	13.0	9.3	5.6	3.0	13.4	9.6	5.7	3.0	38.0
42.0	11.4	8.1	5.2	2.8	11.9	8.4	5.4	2.8	12.4	8.7	5.5	2.9	12.8	9.0	5.5	2.9	42.0
46.0	11.0	7.7	5.1	2.6	11.4	8.0	5.2	2.7	11.8	8.3	5.3	2.7	12.2	8.6	5.4	2.8	46.0
50.0	10.8	7.4	5.0	2.6	11.0	7.7	5.1	2.6	11.4	7.9	5.2	2.7	11.0	8.2	5.3	2.7	50.0
54.0	51.0 m/10.8	7.2	4.9	2.5	10.4	7.4	5.0	2.5	9.9	7.6	5.1	2.6	9.5	7.9	5.1	2.6	54.0
58.0		57.1 m/7.1	4.8	2.4	56.3 m/9.7	7.2	4.9	2.5	8.6	7.4	5.0	2.5	8.2	7.6	5.0	2.5	58.0
62.0			4.7	2.4		7.1	4.8	2.4	61.6 m/7.6	7.2	4.9	2.4	7.1	7.4	5.0	2.5	62.0
66.0			63.2 m/4.7	2.4		62.4 m/7.1	4.7	2.4		7.1	4.8	2.4	6.1	6.8	4.9	2.4	66.0
70.0				69.3 m/2.4			68.5 m/4.6	2.4		67.7 m/6.7	4.7	2.4	66.9 m/5.9	5.9	4.8	2.4	70.0
74.0								2.4			73.8 m/4.6	2.4		73.0 m/5.2	4.8	2.4	74.0
78.0								74.6 m/2.4				2.4			4.7	2.4	78.0
82.0												79.9 m/2.4			79.1 m/4.6	2.4	82.0
86.0																85.1 m/2.4	86.0
Reeves	2	1	1	1	2	1	1	1	2	1	1	1	1	1	1	1	Reeves

Boom length (m)	67.1				73.2				76.2				Boom length (m)
Jib length (m)	12.2	18.3	24.4	30.5	12.2	18.3	24.4	30.5	12.2	18.3	24.4	30.5	Jib length (m)
20.0	20.8 m/13.5				21.9 m/13.5								20.0
22.0	13.5				13.5				22.3 m/13.5				22.0
24.0	13.5	24.9 m/12.0			13.5				13.5				24.0
26.0	13.5	11.9			13.5	12.1			13.5	26.5 m/12.0			26.0
28.0	13.5	11.5	28.6 m/6.2		13.5	11.7	29.7 m/6.2		13.5	11.8			28.0
30.0	13.5	11.1	6.1	32.0 m/3.3	13.5	11.4	6.2	33.0 m/3.2	13.5	11.5	30.2 m/6.2	33.5 m/3.2	30.0
34.0	13.5	10.4	5.9	3.2	13.5	10.7	6.0	3.2	13.5	10.8	6.0	3.2	34.0
38.0	13.5	9.8	5.8	3.0	13.5	10.1	5.8	3.1	13.5	10.2	5.8	3.1	38.0
42.0	13.2	9.3	5.6	2.9	13.5	9.6	5.6	3.0	13.5	9.7	5.7	3.0	42.0
46.0	12.2	8.9	5.4	2.8	11.7	9.1	5.5	2.9	11.5	9.2	5.5	2.9	46.0
50.0	10.4	8.5	5.3	2.7	10.0	8.7	5.4	2.8	9.7	8.8	5.4	2.8	50.0
54.0	8.9	8.1	5.2	2.6	8.5	8.4	5.3	2.7	8.2	8.5	5.3	2.7	54.0
58.0	7.6	7.8	5.1	2.6	7.2	8.0	5.2	2.6	6.9	7.7	5.2	2.6	58.0
62.0	6.5	7.3	5.0	2.5	6.1	6.9	5.1	2.5	5.8	6.6	5.1	2.5	62.0
66.0	5.6	6.3	5.0	2.4	5.1	5.8	5.0	2.5	4.8	5.6	5.0	2.5	66.0
70.0	4.7	5.4	4.9	2.4	4.2	5.0	5.0	2.4	3.9	4.7	5.0	2.4	70.0
74.0	72.2 m/4.3	4.6	4.9	2.4	3.4	4.2	4.7	2.4	3.2	3.9	4.4	2.4	74.0
78.0		3.9	4.3	2.4	77.5 m/2.9	3.4	3.9	2.4	2.5	3.2	3.7	2.4	78.0
82.0		78.3 m/3.8	3.7			2.8	3.3			2.5	3.0		82.0
86.0			84.3 m/3.3			83.5 m/2.5	2.7				2.4		86.0
90.0							88.0 m/2.4						90.0
Reeves	1	1	1	1	1	1	1	1	1	1	1	1	Reeves

Note:
 Ratings according to Japanese Construction Codes for Mobile Cranes and Japanese Safety Ordinance on Cranes, etc.
 Ratings shown in are determined by the strength of the boom or other structural components.
 Refer to notes P17.



HYDRAULIC CRAWLER CRANE

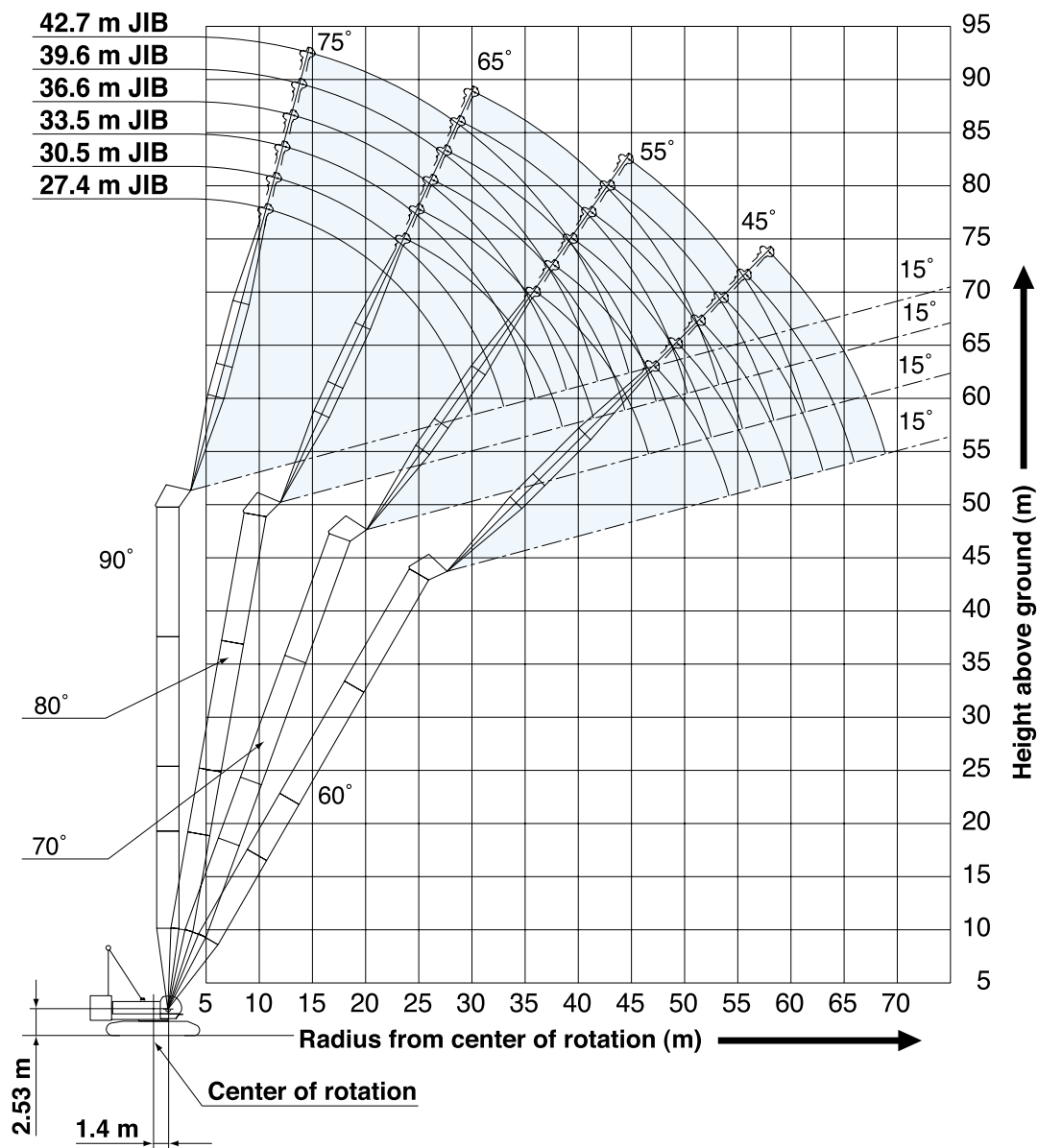
7/250

A series of horizontal dotted lines for writing.



Tower Jib Working Ranges

Tower Length: 48.8 m

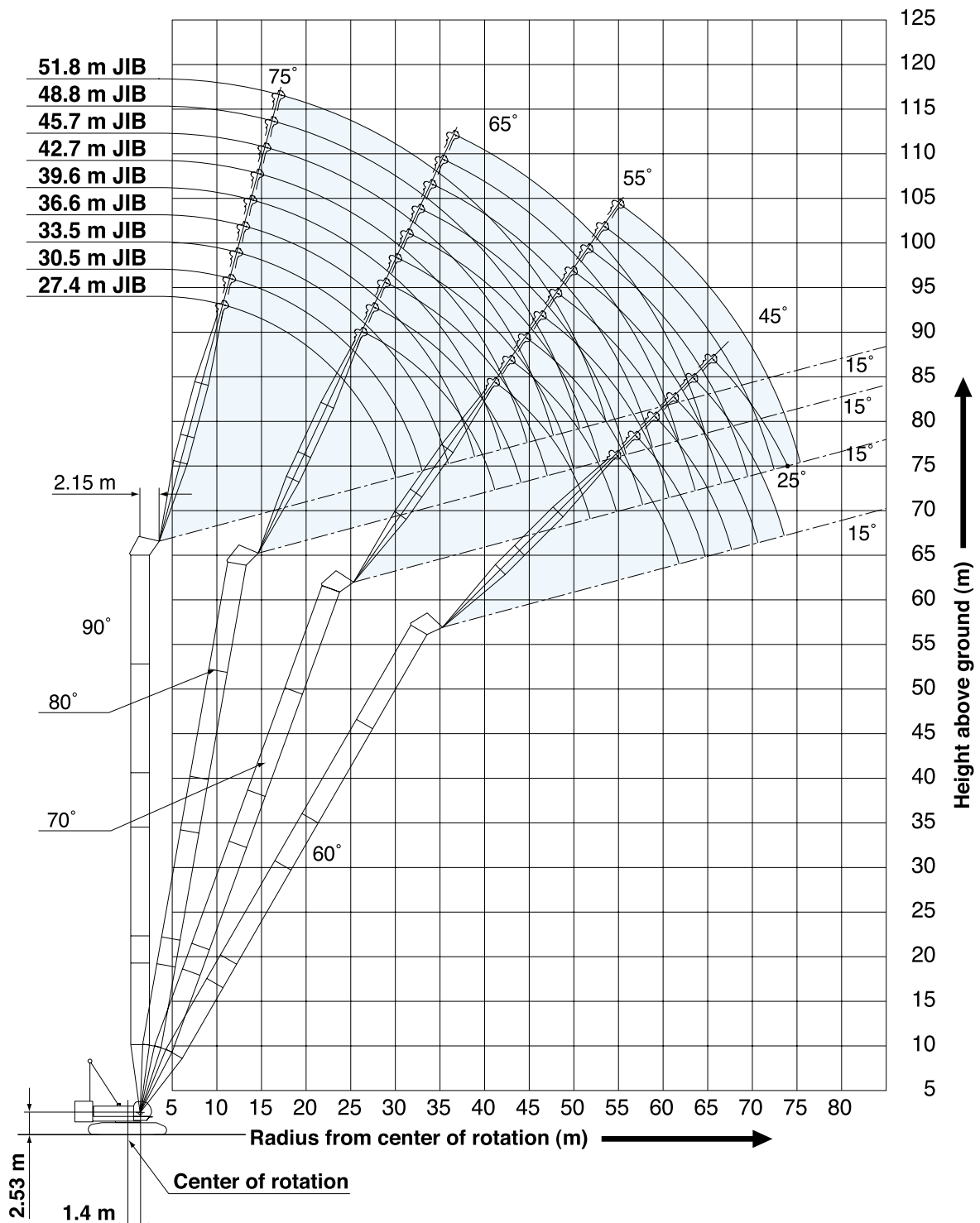
**NOTES:**

1. Ratings according to Japanese Construction Codes for Mobile Cranes and Japanese Safety Ordinance on Cranes, etc.
2. Ratings in metric tons for 360° working area.
3. Operating radius is the horizontal distance from center of rotation to a vertical line through the center of gravity of the load.
4. Weight of hook block(s), slings and other load handling accessories is included in rated load. Their total weight must be subtracted from rated load to obtain weight that can be lifted.
5. Ratings shown are based on freely suspended loads and make no allowance for such factors as wind effect on lifted load, ground conditions out-of-level, operating speeds or any other condition that could be detrimental to the safe operation of this equipment. Operator, therefore, has the responsibility to judge the existing conditions and reduce lifted loads and operating speeds accordingly.
6. Ratings are for operation on a firm and level surface.
7. At radii and boom lengths where no ratings are shown on chart, operation is not intended nor approved.
8. Tower/tower jib inserts and guy lines must be arranged as shown in the "Operator's Manual".
9. Tower jib hoist reeving is 8 part line.
10. Gantry must be in raised position for all conditions.



HYDRAULIC CRANES 7250

Tower Length: 64.1 m



11. Tower and tower jib backstops are required for all tower and tower jib combinations.
12. Ratings shown in are determined by the strength of the tower or other structural component.
13. When erecting and lowering the tower length of 64.1 m, the pillow plate for erection must be placed at the end of crawlers.
14. Instruction in the "Operator's Manual" must be strictly observed when operating the machine.
15. Tower jib ratings: Deduct weight of hook block, slings, and all other load handling accessories from tower jib ratings shown.



Tower Jib Lifting Capacities

Unit: metric ton

**Counterweight: 97.1 t,
Carbody weight: 20.0 t**

36.6 m Tower Length	36.6									
	Tower length (m)	36.6								Tower length (m)
	Jib length (m)	27.4				30.5				Jib length (m)
Tower angle	90°	80°	70°	60°	90°	80°	70°	60°	Tower angle	
Working Radius (m)	10.0	10.9 m/25.0				11.7 m/25.0				10.0
	12.0	25.0				25.0				12.0
	14.0	25.0				25.0				14.0
	16.0	25.0				25.0				16.0
	18.0	25.0				24.2				18.0
	20.0	24.2	21.7 m/23.4			23.5				20.0
	22.0	23.2	23.2			22.7	23.0 m/21.9			22.0
	24.0	21.0	21.0			21.0	21.0			24.0
	26.0	18.6	18.6			18.6	18.6			26.0
	30.0	29.9 m/11.2	15.2	31.9 m/14.1		15.1	15.1	33.7 m/13.0		30.0
	34.0		12.8	12.8		32.8 m/10.6	12.7	12.7		34.0
	38.0		36.2 m/11.8	11.1	41.2 m/10.0		11.0	11.0		38.0
	42.0			9.7	9.7		39.2 m/10.6	9.6	43.3 m/9.2	42.0
	46.0			42.3 m/9.6	8.6			45.2 m/8.7	8.5	46.0
	50.0				47.9 m/8.2				7.7	50.0
	54.0							50.8 m/7.6		54.0
Reeves			2				2			Reeves

39.7 m Tower Length	39.7												
	Tower length (m)	39.7								Tower length (m)			
	Jib length (m)	27.4				30.5				33.5			
Tower angle	90°	80°	70°	60°	90°	80°	70°	60°	90°	80°	70°	60°	Tower angle
Working Radius (m)	10.0	10.9 m/25.0				11.7 m/25.0							10.0
	12.0	25.0				25.0			12.5 m/25.0				12.0
	14.0	25.0				25.0			25.0				14.0
	16.0	25.0				25.0			24.2				16.0
	18.0	25.0				24.2			23.4				18.0
	20.0	24.2				23.5			22.6				20.0
	22.0	23.2	22.3 m/22.8			22.7	23.6 m/21.4		21.8				22.0
	24.0	20.9	20.9			21.0	20.9		21.0	24.8 m/20.2			24.0
	26.0	18.5	18.6			18.6	18.6		18.8	18.6			26.0
	30.0	29.9 m/11.2	15.2	33.0 m/13.4		15.1	15.1		15.3	15.1			30.0
	34.0		12.8	12.8		32.8 m/10.6	12.7	34.7 m/12.4	12.0	12.7	36.5 m/11.5		34.0
	38.0		36.7 m/11.5	11.1			11.0	11.0	35.8 m/9.2	11.0	11.0		38.0
	42.0			9.7	42.7 m/9.5		39.7 m/10.4	9.6	44.9 m/8.7	9.6	9.6		42.0
	46.0			43.3 m/9.3	8.6			8.5	8.5	42.6 m/9.4	8.4	47.0 m/8.2	46.0
	50.0				49.4 m/8.0			46.3 m/8.4	7.7		49.2 m/7.7	7.6	50.0
	54.0								52.4 m/7.2			6.8	54.0
	56.0											55.3 m/6.6	56.0
Reeves			2				2			2			Reeves

Note:
Ratings according to Japanese Construction Codes for Mobile Cranes and Japanese Safety Ordinance on Cranes, etc.
Ratings shown in are determined by the strength of the tower or other structural components.
Refer to notes P21 and P22.

42.7 m Tower Length	42.7																
	Tower length (m)	42.7								Tower length (m)							
	Jib length (m)	27.4				30.5				33.5				36.6			
Tower angle	90°	80°	70°	60°	90°	80°	70°	60°	90°	80°	70°	60°	90°	80°	70°	60°	Tower angle
Working Radius (m)	10.0	10.9 m/25.0				11.7 m/25.0											10.0
	12.0	25.0				25.0			12.5 m/25.0				13.3 m/23.9				12.0
	14.0	25.0				25.0			25.0				23.6				14.0
	16.0	25.0				25.0			24.2				22.9				16.0
	18.0	25.0				24.2			23.4				22.2				18.0
	20.0	24.2				23.5			22.6				21.4				20.0
	22.0	23.2	22.8 m/22.3			22.7			21.8				20.7				22.0
	24.0	20.9	20.9			21.0	24.1 m/20.9		21.0	25.4 m/19.6			19.9				24.0
	26.0	18.5	18.6			18.6	18.6		18.8	18.6			18.8	26.7 m/18.2			26.0
	30.0	29.9 m/11.3	15.2			15.1	15.1		15.3	15.1			15.2	15.0			30.0
	34.0		12.8	12.8		32.8 m/10.6	12.7	35.8 m/11.8	12.1	12.7			12.8	12.6			34.0
	38.0		37.3 m/11.4	11.1			11.0	11.0	35.8 m/9.2	11.0	11.0		9.3	10.9	39.3 m/10.4		38.0
	42.0			9.7	44.2 m/9.0		40.2 m/10.2	9.6		9.6	9.6		38.7 m/8.7	9.5	9.5		42.0
	46.0			44.4 m/8.9	8.6			8.5	46.4 m/8.4	43.2 m/9.3	8.4	48.5 m/7.9		8.4	8.3		46.0
	50.0				7.8			47.3 m/8.2	7.7		7.5	7.6		46.1 m/8.3	7.4	50.7 m/7.3	50.0
	54.0				51.0 m/7.6				53.9 m/6.9			50.2 m/7.5	6.8		53.2 m/6.7	6.7	54.0
	58.0											56.8 m/6.3				6.0	58.0
	60.0															59.8 m/5.7	60.0
Reeves			2				2			2			2				Reeves



HYDRAULIC CRANES

7/250

Unit: metric ton

Counterweight: 97.1 t, Carbody weight: 20.0 t

45.8 m Tower Length	Tower length (m)		45.8																				Tower length (m)	
	Jib length (m)		27.4				30.5				33.5				36.6				39.6				Jib length (m)	
	Tower angle		90°	80°	70°	60°	90°	80°	70°	60°	90°	80°	70°	60°	90°	80°	70°	60°	90°	80°	70°	60°	Tower angle	
Working Radius (m)	10.0	10.9m/25.0				11.7m/25.0																	10.0	
	12.0	25.0				25.0				12.5m/25.0				13.3m/23.9									12.0	
	14.0	25.0				25.0				25.0				23.6						14.1m/22.0			14.0	
	16.0	25.0				25.0				24.2				22.9									16.0	
	18.0	25.0				24.2				23.4				22.2									18.0	
	20.0	24.2				23.5				22.6				21.4									20.0	
	22.0	23.2	23.3m/21.7			22.7				21.8				20.7									22.0	
	24.0	20.9	20.9			21.0	24.5m/20.3			21.0	25.9m/18.7			19.9									24.0	
	26.0	18.5	18.6			18.6	18.6			18.8	18.6			18.8	27.2m/17.6					18.3	28.5m/16.3		26.0	
	30.0	29.9m/11.3	15.2			15.1	15.1			15.3	15.1			15.2	15.0					15.2	14.9		30.0	
	34.0		12.8	35.0m/12.3		32.8m/10.6	12.7	36.8m/11.5		12.1	12.7			12.8	12.6					12.8	12.5		34.0	
	38.0		37.8m/11.2	11.1			11.0	11.0		35.8m/9.2	11.0	38.5m/10.9		9.3	10.9	40.3m/10.1				10.8	10.8		38.0	
	42.0			9.7	45.8m/8.6		40.7m/10.1	9.6		9.6	9.6			38.7m/8.7	9.5	9.5				41.7m/7.7	9.4	9.4	42.0	
	46.0			45.4m/8.8	8.6			8.5	47.9m/8.1		43.7m/9.1	8.4		8.4	8.3					8.2	8.1		46.0	
	50.0				7.8			48.3m/8.1	7.7		7.5	50.1m/7.6		46.6m/8.2	7.4	52.2m/7.0				49.6m/7.2	7.2		50.0	
	54.0				52.5m/7.3				6.9		51.3m/7.3	6.8		6.6	6.7					6.4	54.4m/6.3		54.0	
	58.0								55.4m/6.7			6.1		54.2m/6.6	6.0					57.2m/5.9	5.8		58.0	
62.0											58.4m/6.0			61.3m/5.5						5.3		62.0		
66.0																				64.3m/5.0		66.0		
Reeves			2				2			2			2					2				Reeves		

48.8 m Tower Length	Tower length (m)		48.8																				Tower length (m)	
	Jib length (m)		27.4				30.5				33.5				36.6				Jib length (m)					
	Tower angle		90°	80°	70°	60°	90°	80°	70°	60°	90°	80°	70°	60°	90°	80°	70°	60°	90°	80°	70°	60°	Tower angle	
Working Radius (m)	10.0	10.9 m/25.0				11.7 m/25.0																10.0		
	12.0	25.0				25.0				12.5 m/25.0				13.3 m/23.9								12.0		
	14.0	25.0				25.0				25.0				23.6								14.0		
	16.0	25.0				25.0				24.2				22.9								16.0		
	18.0	25.0				24.2				23.4				22.2								18.0		
	20.0	24.2				23.5				22.6				21.4								20.0		
	22.0	23.2	23.9 m/21.2			22.7				21.8				20.7								22.0		
	24.0	20.9	20.9			21.0	25.1 m/19.7			21.0				19.9								24.0		
	26.0	18.5	18.6			18.6	18.6			18.8	26.4 m/18.4			18.8	27.7 m/17.0							26.0		
	30.0	29.9 m/11.3	15.2			15.1	15.1			15.3	15.1			15.2	15.0							30.0		
	34.0		12.8	36.1 m/11.8		32.8 m/10.6	12.7	37.8 m/11.1		12.1	12.7			12.8	12.6							34.0		
	38.0		11.1	11.1			11.0	11.0		35.8 m/9.2	11.0	39.6 m/10.3		9.3	10.9	41.3 m/9.6						38.0		
	42.0		38.3 m/11.0	9.7			41.3 m/9.9	9.6		9.6	9.5			38.7 m/8.7	9.5	9.4						42.0		
	46.0			8.6	47.3 m/8.3			8.5	49.4 m/7.8		44.2 m/8.9	8.4		8.4	8.3					8.4	8.3		46.0	
	50.0			46.4 m/8.5	7.8			49.4 m/7.7	7.7		7.5	51.6 m/7.3		47.2 m/8.1	7.4	53.7 m/6.8						50.0		
	54.0				7.0				6.9		52.3 m/7.1	6.8		6.6	6.7					6.6	6.7		54.0	
	58.0								56.9 m/6.4			6.1		55.3 m/6.4	6.0					55.3 m/6.4	6.0		58.0	
62.0											59.9 m/5.8			61.3 m/5.5							5.4	62.0		
64.0																					62.8 m/5.3	64.0		
Reeves			2				2			2			2					2				Reeves		

Working Radius (m)	Tower length (m)		48.8								Tower length (m)	
	Jib length (m)		39.6				42.7				Jib length (m)	
	Tower angle		90°	80°	70°	60°	90°	80°	70°	60°	Tower angle	
14.0	14.1 m/22.0				14.9 m/20.0					14.0		
16.0	21.4				19.7					16.0		
18.0	20.8				19.2					18.0		
20.0	20.2				18.6					20.0		
22.0	19.6				18.1					22.0		
24.0	19.0				17.5					24.0		
26.0	18.3	29.0 m/15.8			17.0					26.0		
30.0	15.2	14.9			15.2	30.3 m/14.7				30.0		
34.0	12.8	12.5			12.8	12.4				34.0		
38.0	10.8	10.8			10.9	10.6				38.0		
42.0	41.7 m/7.7	9.4	43.1 m/9.0		8.9	9.2	44.8 m/8.3			42.0		
46.0		8.2	8.1		44.6 m/6.8	8.0	7.9			46.0		
50.0		7.2	7.2			7.0	7.0			50.0		
54.0		50.1 m/7.1	6.4	55.9 m/6.1		53.0 m/6.4	6.2			54.0		
58.0			5.8	5.8			5.6	58.1 m/5.6		58.0		
62.0			58.2 m/5.8	5.3			61.2 m/5.3	5.2		62.0		
66.0				65.8 m/4.9				4.8		66.0		
70.0								68.7 m/4.5		70.0		
Reeves			2			2				Reeves		

Note:

Ratings according to Japanese Construction Codes for Mobile Cranes and Japanese Safety Ordinance on Cranes, etc.
 Ratings shown in [] are determined by the strength of the tower or other structural components.
 Refer to notes P21 and P22.



Unit: metric ton

Counterweight: 97.1 t, Carbody weight: 20.0 t

51.9 m Tower Length	51.9																	
	27.4				30.5				33.5				36.6					
	Tower angle	90°	80°	70°	60°	90°	80°	70°	60°	90°	80°	70°	60°	90°	80°	70°	60°	Tower angle
Working Radius (m)	10.0	10.9 m/25.0				11.7 m/25.0												10.0
	12.0	25.0				25.0				12.5 m/25.0				13.3 m/23.9				12.0
	14.0	25.0				25.0				25.0				23.6				14.0
	16.0	25.0				25.0				24.2				22.9				16.0
	18.0	25.0				24.2				23.4				22.2				18.0
	20.0	24.2				23.5				22.6				21.4				20.0
	22.0	23.2				22.7				21.8				20.7				22.0
	24.0	20.9	24.4 m/20.6			21.0	25.7 m/19.0			21.0				19.9				24.0
	26.0	18.5	18.6			18.6	18.6			18.8	27.0 m/17.8			18.8	28.2 m/16.6			26.0
	30.0	29.9 m/11.3	15.2			15.1	15.1			15.3	15.1			15.2	15.0			30.0
	34.0		12.8	37.1 m/11.4		32.8 m/10.6	12.7			12.1	12.7			12.8	12.6			34.0
	38.0		11.1	11.1			11.0	38.9 m/10.7		35.8 m/9.2	11.0	40.6 m/10.0		9.3	10.9			38.0
	42.0		38.9 m/10.8	9.7			41.8 m/9.7	9.6			9.6	9.5		38.7 m/8.7	9.5	42.4 m/9.3		42.0
	46.0			8.6	48.8 m/8.0			8.5			44.7 m/8.8	8.4		8.4	8.3			46.0
	50.0			47.5 m/8.2	7.8			7.6	51.0 m/7.5			7.5	53.1 m/7.0	47.7 m/7.9	7.4			50.0
	54.0				7.0			50.4 m/7.5	6.9			53.4 m/6.9	6.8		6.6	55.3 m/6.4		54.0
	58.0				55.5 m/6.7				6.2				6.1		56.3 m/6.3	6.0		58.0
	62.0								58.5 m/6.1				61.4 m/5.6			5.4		62.0
	66.0															64.4 m/5.1		66.0
Reeves			2				2				2			2				Reeves

Working Radius (m)	51.9																
	39.6				42.7				45.7				Tower length (m)				
	Tower angle	90°	80°	70°	60°	90°	80°	70°	60°	90°	80°	70°	60°	Tower angle			
	14.0	14.1 m/22.0				14.9 m/20.0				15.7 m/17.4				14.0			
	16.0	21.4				19.7				17.4				16.0			
	18.0	20.8				19.2				16.9				18.0			
	20.0	20.2				18.6				16.4				20.0			
	22.0	19.6				18.1				16.0				22.0			
	24.0	19.0				17.5				15.5				24.0			
	26.0	18.3	29.5 m/15.4			17.0				15.0				26.0			
	30.0	15.2	14.9			15.2	30.8 m/14.4			14.1	32.1 m/13.4			30.0			
	34.0	12.8	12.5			12.8	12.4			12.6	12.3			34.0			
	38.0	10.8	10.8			10.8	10.6			10.6	10.5			38.0			
	42.0	41.7 m/7.7	9.4	44.1 m/8.7		8.9	9.2	45.9 m/7.9		8.9	9.0			42.0			
	46.0		8.2	8.1		44.6 m/6.8	8.0	7.9		7.1	7.8	47.6 m/7.4		46.0			
	50.0		7.2	7.2			7.0	7.0		47.5 m/6.1	6.8	6.8		50.0			
	54.0		50.6 m/7.1	6.4	57.4 m/5.9		53.6 m/6.2	6.2			6.0	6.0		54.0			
	58.0			5.8	5.8			5.6	59.6 m/5.3		56.5 m/5.6	5.4	61.7 m/4.8	58.0			
	62.0			59.3 m/5.6	5.2			5.2	5.0			5.0	4.8	62.0			
	66.0				4.8			62.2 m/5.2	4.6			65.2 m/4.6	4.4	66.0			
	70.0				67.3 m/4.6				4.2				4.0	70.0			
	74.0								70.2 m/4.2				73.2 m/3.7	74.0			
Reeves			2				2				2			Reeves			

Note:
Ratings according to Japanese Construction Codes for Mobile Cranes and Japanese Safety Ordinance on Cranes, etc. Ratings shown in are determined by the strength of the tower or other structural components. Refer to notes P21 and P22.

54.9 m Tower Length	54.9																	
	27.4				30.5				33.5				36.6					
	Tower angle	90°	80°	70°	60°	90°	80°	70°	60°	90°	80°	70°	60°	90°	80°	70°	60°	Tower angle
Working Radius (m)	10.0	10.9 m/25.0				11.7 m/25.0												10.0
	12.0	25.0				25.0				12.5 m/25.0				13.3 m/23.9				12.0
	14.0	25.0				25.0				25.0				23.6				14.0
	16.0	25.0				25.0				24.2				22.9				16.0
	18.0	25.0				24.2				23.4				22.2				18.0
	20.0	24.2				23.5				22.6				21.4				20.0
	22.0	23.2				22.7				21.7				20.7				22.0
	24.0	20.9	24.9 m/20.0			21.0				21.0				19.9				24.0
	26.0	18.5	18.6			18.6	26.2 m/18.6			18.8	27.5 m/17.2			18.8	28.8 m/16.2			26.0
	30.0	29.9 m/11.3	15.2			15.1	15.1			15.3	15.1			15.2	15.0			30.0
	34.0		12.8			32.8 m/10.6	12.7			12.2	12.7			12.8	12.6			34.0
	38.0		11.1	38.2 m/11.0			11.0	39.9 m/10.3		35.8 m/9.3	11.0	41.7 m/9.6		9.3	10.9			38.0
	42.0		39.4 m/10.6	9.7			9.5	9.6			9.6	9.5		38.7 m/8.7	9.5	43.4 m/9.0		42.0
	46.0			8.6			42.3 m/9.5	8.5			45.3 m/8.6	8.4		8.4	8.3			46.0
	50.0			48.5 m/8.1	50.3 m/7.7			7.6	52.5 m/7.2			7.5		48.2 m/7.8	7.4			50.0
	54.0				7.0			51.5 m/7.3	6.9			6.8	54.6 m/6.7		6.6	56.8 m/6.1		54.0
	58.0				57.0 m/6.4				6.1			54.4 m/6.7	6.0		57.4 m/6.0	5.9		58.0
	62.0								60.0 m/5.8				5.4			5.3		62.0
	66.0												62.9 m/5.3			65.9 m/4.9		66.0
Reeves			2				2				2			2				Reeves



Unit: metric ton

Counterweight: 97.1 t, Carbody weight: 20.0 t

61.0 m Tower Length	Tower length (m)		61.0																				Tower length (m)	
	Jib length (m)		27.4				30.5				33.5				36.6				39.6				Jib length (m)	
	Tower angle		90°	80°	70°	60°	90°	80°	70°	60°	90°	80°	70°	60°	90°	80°	70°	60°	90°	80°	70°	60°	Tower angle	
Working Radius (m)	10.0	10.9m/25.0				11.7m/25.0																	10.0	
	12.0	25.0				25.0				12.5m/25.0				13.3m/23.9									12.0	
	14.0	25.0				25.0				25.0				23.6							14.1m/22.0		14.0	
	16.0	24.6				24.6				24.0				22.9							21.4		16.0	
	18.0	23.7				23.7				23.0				22.2							20.8		18.0	
	20.0	22.9				22.7				22.0				21.4							20.2		20.0	
	22.0	21.5				21.5				21.0				20.7							19.6		22.0	
	24.0	20.0				20.0				20.0				19.9							19.0		24.0	
	26.0	18.3	18.6			18.6	27.3m/17.4				18.8	28.5m/16.4			18.8	29.8m/15.2				18.3			26.0	
	30.0	29.9m/11.3	15.2			15.1	15.1				15.3	15.1			15.2	15.0				15.2	31.1m/14.3		30.0	
	34.0		12.8				32.8m/10.6	12.7			12.3	12.7			12.8	12.6				12.8	12.5		34.0	
	38.0		11.1	40.3m/10.3				11.0			35.8m/9.4	11.0			9.5	10.9				10.7	10.8		38.0	
	42.0		40.4m/10.2	9.7				9.5	9.6			9.6	43.8m/8.8		38.7m/8.9	9.5	45.5m/8.4			41.7m/7.9	9.4		42.0	
	46.0			8.6			43.4m/9.2	8.5			8.4	8.4				8.4	8.3			8.2	47.3m/7.8		46.0	
	50.0			7.8	53.4m/6.8			7.6				46.3m/8.4	7.5			49.3m/7.5	7.4			7.2	7.2		50.0	
	54.0			50.6m/7.7	6.7			53.6m/6.9	55.5m/6.4			6.7	57.7m/5.7			6.6				52.2m/6.8	6.4		54.0	
	58.0				6.1				6.0			56.5m/6.3	5.7			6.0	59.8m/5.3				5.8		58.0	
	62.0				60.1m/5.8				5.4				5.2			59.4m/5.8	5.1				5.4	4.9	62.0	
	66.0								63.0m/5.2				4.8				4.7				62.4m/5.3	4.5	66.0	
	70.0																68.9m/4.3					3.9	70.0	
74.0																					71.9m/3.6	74.0		
Reeves			2				2				2				2					2		Reeves		

61.0 m Tower Length	Tower length (m)		61.0														Tower length (m)					
	Jib length (m)		42.7				45.7				48.8				51.8				Jib length (m)			
	Tower angle		90°	80°	70°	60°	90°	80°	70°	60°	90°	80°	70°	60°	90°	80°	70°	Tower angle				
Working Radius (m)	14.0	14.9 m/20.0				15.7 m/17.4																14.0
	16.0	19.7				17.4							16.5 m/15.4				17.2 m/13.9					16.0
	18.0	19.2				16.9							15.0				13.7					18.0
	20.0	18.6				16.4							14.6				13.3					20.0
	22.0	18.1				16.0							14.2				12.8					22.0
	24.0	17.5				15.5							13.7				12.4					24.0
	26.0	17.0				15.0							13.3				12.0					26.0
	30.0	15.2	32.4 m/13.5			14.1	33.7 m/12.6						12.5				11.2					30.0
	34.0	12.8	12.4			12.6	12.3						11.6	35.0 m/11.4			10.4	36.3 m/9.7				34.0
	38.0	10.8	10.6			10.4	10.5						9.9	10.1			9.1	9.3				38.0
	42.0	8.9	9.2			8.7	9.0						8.5	8.6			7.9	8.2				42.0
	46.0	44.6 m/6.9	8.0	49.0 m/7.2		7.2	7.8						7.3	7.5			6.9	7.1				46.0
	50.0		7.0	7.0		47.5 m/6.2	6.8	50.8 m/6.7					5.6	6.5	52.5 m/6.0		5.8	6.2				50.0
	54.0		6.2	6.2			6.0	6.0					50.5 m/5.3	5.7	5.7		53.4 m/4.9	5.4	54.2 m/5.3			54.0
	58.0		55.2 m/5.9	5.6			5.4	5.4						5.1	5.1			4.8	4.8			58.0
62.0			5.2	64.1 m/4.0		58.1 m/5.4	5.0					61.0 m/4.7	4.7			4.4	4.4				62.0	
66.0			65.3 m/4.9	4.0			4.6	66.3 m/3.7					4.3			64.0 m/4.1	4.0				66.0	
70.0				3.6			68.3 m/4.3	3.3						3.9	3.1					3.6	70.0	
74.0				3.2				2.9						71.2 m/3.8	2.7					3.2	74.0	
78.0				74.8 m/3.1											2.3					74.2 m/3.2		78.0
Reeves			2				2						2				2					Reeves

Note:
 Ratings according to Japanese Construction Codes for Mobile Cranes and Japanese Safety Ordinance on Cranes, etc.
 Ratings shown in [] are determined by the strength of the tower or other structural components.
 Refer to notes P21 and P22.



HYDRAULIC CRANES

7/250

Unit: metric ton

Counterweight: 97.1 t, Carbody weight: 20.0 t

64.1 m Tower Length	Tower length (m)		64.1																				Tower length (m)	
	Jib length (m)		27.4				30.5 m				33.5				36.6				39.6				Jib length (m)	
	Tower angle		90°	80°	70°	60°	90°	80°	70°	60°	90°	80°	70°	60°	90°	80°	70°	60°	90°	80°	70°	60°	Tower angle	
Working Radius (m)	10.0	10.9m/25.0				11.7m/25.0																		10.0
	12.0	25.0				25.0				12.5m/24.8				13.3m/23.9										12.0
	14.0	24.3				24.3				24.3				23.6								14.1m/22.0		14.0
	16.0	23.6				23.6				23.6				22.9								21.4		16.0
	18.0	22.9				22.9				22.9				22.2								20.8		18.0
	20.0	22.2				22.2				22.0				21.4								20.2		20.0
	22.0	21.5				21.5				21.0				20.7								19.6		22.0
	24.0	20.0				20.0				20.0				19.9								19.0		24.0
	26.0	18.3	26.5m/18.3			18.6	27.8m/15.9			18.8	29.1m/15.9			18.8								18.3		26.0
	30.0	29.9m/11.3	15.2			15.1	15.1			15.3	15.1			15.2	30.4m/14.9						15.2	31.7m/13.9		30.0
	34.0		12.8			32.8m/10.6	12.7			12.3	12.7			12.8	12.6						12.8	12.5		34.0
	38.0		11.1	41.3m/9.9		11.0				35.8m/9.4	11.0			9.5	10.9						10.7	10.8		38.0
	42.0		41.0m/10.0	9.7		9.5	43.1m/9.3			9.6	44.8m/8.7			38.7m/8.9	9.5					41.7m/7.9	9.4			42.0
	46.0			8.6		43.9m/9.0	8.5			8.4	8.4			8.4	46.5m/8.1					8.2	48.3m/7.6			46.0
	50.0			7.8		7.6	57.1m/5.4			46.9m/8.2	7.5			49.8m/7.4	7.4					7.2	7.2			50.0
	54.0			51.7m/7.4	54.9m/6.0	6.9	57.1m/5.4			6.7				6.6						52.7m/6.6	6.4			54.0
	58.0				5.7	54.6m/6.7	5.3			57.5m/6.2	59.2m/4.9			6.0	61.4m/4.5					5.8				58.0
62.0				61.6m/5.3	4.9	64.6m/4.6			4.2				4.2	60.5m/5.6	4.4				5.4	63.5m/4.0			62.0	
66.0									67.5m/4.0				3.6						73.4m/3.0	3.4			74.0	
70.0																							74.0	
74.0																							74.0	
74.0																							74.0	
74.0																							74.0	
Reeves			2			2				2				2						2			Reeves	

64.1 m Tower Length	Tower length (m)		64.1												Tower length (m)								
	Jib length (m)		42.7				45.7				48.8				51.8				Jib length (m)				
	Tower angle		90°	80°	70°	60°	90°	80°	70°	60°	90°	80°	70°	60°	90°	80°	70°	60°	Tower angle				
Working Radius (m)	14.0	14.9 m/20.0				15.7 m/17.4																	14.0
	16.0	19.7				17.4				16.5 m/15.4				17.2 m/13.9									16.0
	18.0	19.2				16.9				14.6				13.3									18.0
	20.0	18.6				16.4				14.2				12.8									20.0
	22.0	18.1				16.0				13.7				12.4									22.0
	24.0	17.5				15.5				13.3				11.9									24.0
	26.0	17.0				15.0				13.3				11.9									26.0
	30.0	15.2	32.9 m/13.3			14.1				12.5				11.1									30.0
	34.0	12.8	12.4			12.6	34.2 m/12.3			11.6	35.5 m/11.4			10.4	36.8 m/9.2								34.0
	38.0	10.8	10.6			10.4	10.5			9.9	10.1			9.1	9.0								38.0
	42.0	8.8	9.2			8.7	9.0			8.5	8.6			7.9	7.9								42.0
	46.0	44.6 m/6.9	8.0			7.1	7.8			7.1	7.5			6.8	6.8								46.0
	50.0		7.0	7.0		47.5 m/6.2	6.8	51.8 m/6.4		5.6	6.5	53.5 m/5.8		5.6	5.9								50.0
	54.0		6.1	6.2			6.0	6.0		50.5 m/5.3	5.7	5.7	53.4 m/4.5	5.1	55.3 m/4.9								54.0
	58.0		55.7 m/5.8	5.6			5.4	5.4			5.1	5.1		4.5	4.5								58.0
	62.0			5.2			58.6 m/5.3	5.0		61.6 m/4.7	4.7			4.1	4.1								62.0
	66.0			4.8	3.4			4.6			4.3			64.5 m/3.7	3.7								66.0
70.0			66.4 m/4.7	3.2			69.3 m/4.3			3.9				3.3								70.0	
74.0				2.8									72.3 m/3.7									74.0	
78.0																						78.0	
78.0																						78.0	
78.0																						78.0	
Reeves			2			2				2				2								Reeves	

Note:
 Ratings according to Japanese Construction Codes for Mobile Cranes and Japanese Safety Ordinance on Cranes, etc.
 Ratings shown in are determined by the strength of the tower or other structural components.
 Refer to notes P21 and P22.

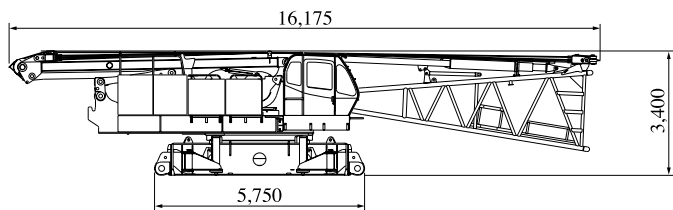


PARTS AND ATTACHMENTS

Dimensions: mm Weight: kg

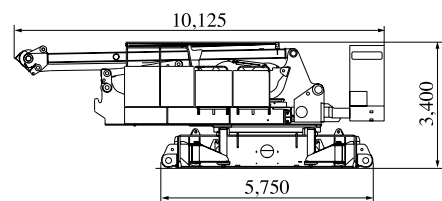
Base Machine

With boom base, carbody, gantry, trans-lifter, lower spreader, and upper spreader, main and aux. winches (non free-fall) including wire rope and boom hoist winch including wire rope
Weight: 44,500 kg Width: 3,400 mm



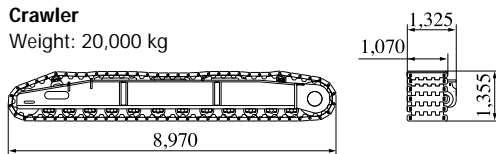
Base Machine

With carbody, gantry, trans-lifter, main and aux. winches (non free-fall) and boom hoist winch
Without lower spreader, wire rope for boom hoist, and wire rope for main and aux. hoist
Weight: 37,300 kg Width: 3,200 mm



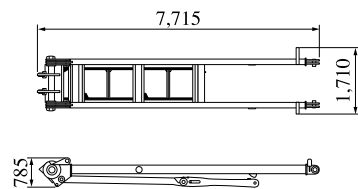
Crawler

Weight: 20,000 kg

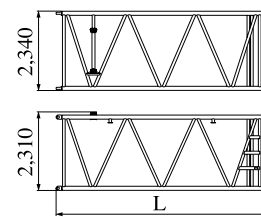


Gantry

Weight: 2,830 kg



Insert Boom

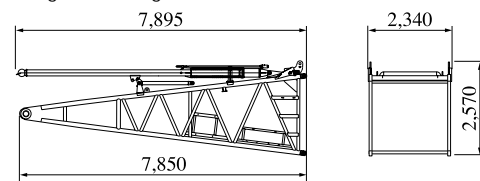


	L (mm)	Weight (kg)*
3.0m	3,175	890
6.1m	6,220	1,440
12.2m	12,320	2,540

*with boom guy cables

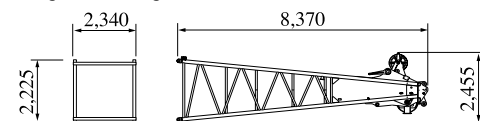
Boom Base (with backstop)

Weight: 4,180 kg



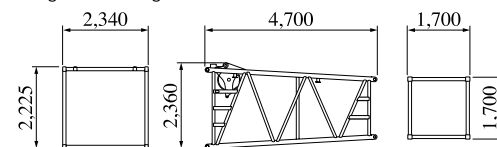
Boom Top

Weight: 3,860 kg



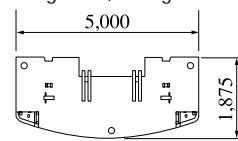
Insert Tapered Boom

Weight: 1,160 kg



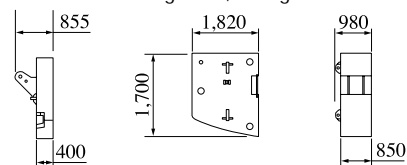
Counterweight A

Weight: 13,500 kg



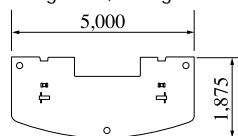
Counterweight E, E'

Weight: 11,000 kg



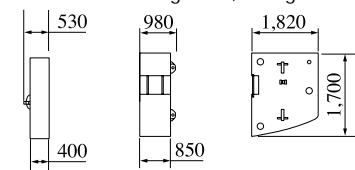
Counterweight B, C, D

Weight: 13,200 kg



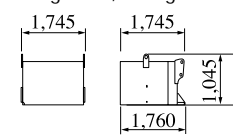
Counterweight F, F'

Weight: 11,000 kg



Carbodyweight

Weight: 10,000 kg x 2





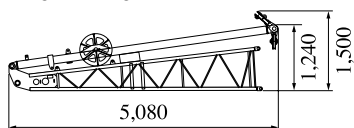
HYDRAULIC CRANES

7/250

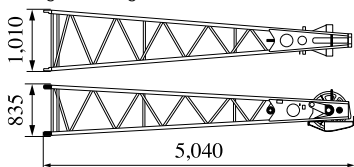
Dimensions: mm Weight: kg

Jib Base with Strut (For Crane)

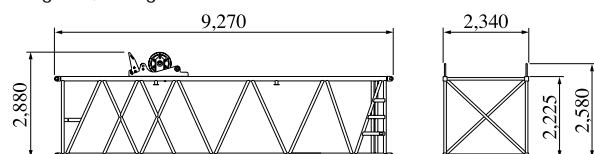
Weight: 510 kg Width: 1,040 mm

**Jib Top (For Crane)**

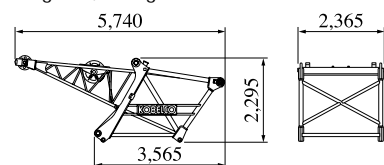
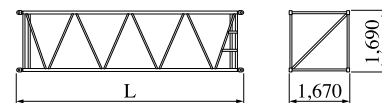
Weight: 315 kg

**9.1 m Special Insert Boom for Tower**

Weight: 2,200 kg

**Tower Cap**

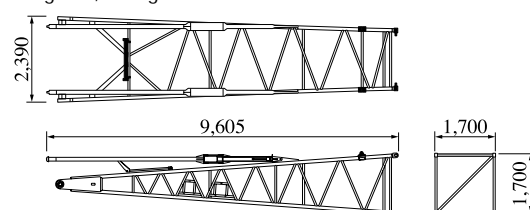
Weight: 2,310 kg

**Insert Tower Jib**

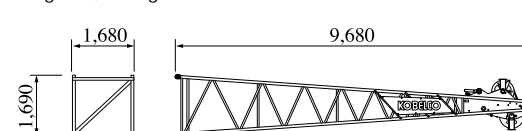
	L (mm)	Weight (kg)
3.0 m	3,160	320
6.1 m	6,210	530
9.1 m	9,260	740

Tower Jib Base

Weight: 1,710 kg

**Tower Jib Top**

Weight: 1,120 kg

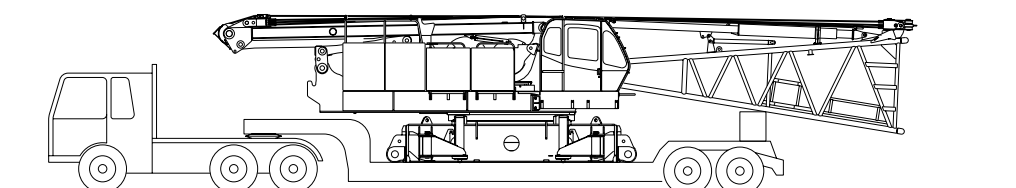


Other Attachments

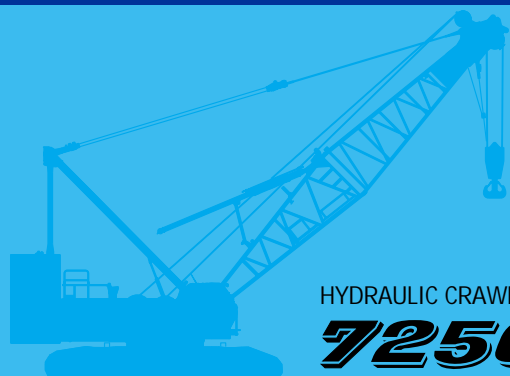
Attachments	Weight	Dimensions (L x W x H)
3.0 m insert jib (for crane)	110 kg	3,130 mm x 1,020 mm x 840 mm
6.1 m insert jib (for crane)	190 kg	6,175 mm x 1,020 mm x 840 mm
Relay jib	400 kg (with guy cables)	3,170 mm x 1,670 mm x 1,690 mm
Trans-lifter	395 kg	1,145 mm x 400 mm x 1,390 mm
Upper spreader	670 kg	2,410 mm x 250 mm x 890 mm
Lower spreader	400 kg	1,500 mm x 290 mm x 760 mm
Tower strut	2,190 kg	7,165 mm x 1,150 mm x 2,430 mm
Upper spreader for tower jib	260 kg	1,020 mm x 335 mm x 765 mm
Lower spreader for tower jib	490 kg	2,330 mm x 705 mm x 1,090 mm
250-ton hook	4,200 kg	2,310 mm x 1,620 mm x 720 mm
150-ton hook	2,300 kg	715 mm x 700 mm x 2,250 mm
70-ton hook	1,200 kg	380 mm x 700 mm x 1,825 mm
35-ton hook	900 kg	365 mm x 700 mm x 1,575 mm
Ball hook	450 kg	1,200 mm x 380 mm dia.

Note: Estimated weights may vary \pm 2%.

Transportation of Base Machine



1. Rest the lower boom on the wooden block.
2. This transportation plan depends on specifications of your trailer and the areas or countries where you transport.



HYDRAULIC CRAWLER CRANE

7250

Standard Equipment

Upper structure/Lower structure

- Counterweight: 97.1 ton (total weight)
- Carbody weight: 20.0 ton (total weight)
- 1,070 mm shoe crawlers
- Batteries (136Ah/5HR)
- Trans-lifter (jack system)
- Gantry raising/lowering cylinder (with storage chain)
- Electric hand throttle grip
- Variable boom hoist speed controller
- Variable main/aux. hoist speed controller
- Swing neutral-free/brake select switch
- Side deck for cab
- Steps (crawlers)
- Two front working lights
- Two rear view mirrors
- Tools (for routine maintenance)
- Boom connect pin holder
- Cable roller (for boom)
- Upper spreader storage guide
- Level gauge (carbody)

Cab Control

- Air conditioner
- Luggage box
- Cup holder
- Ashtray
- Cigar lighter
- Intermittent wiper & window washer (skylight and front window)
- Sun visor
- Roof blind
- Floor mat (cloth)
- Foot rest
- Shoe tray

Safety Device

- Load Moment Indicator (with boom lowering slow stop function)
- LMI release key (for hook over-hoist prevention device and boom over-hoist prevention device)
- LCD multi display
- Ultimate stop function for boom over-hoist
- Function lock lever
- Propel lever lock
- Mechanical drum lock pawl (main, aux. and boom hoist)
- Signal horn
- Swing parking brake
- Mechanical swing lock pin (four positions)
- Swing flashers/warning buzzer

Note: Standard equipment may vary depending on your areas or countries.

Due to our policy of continual product improvements all designs and specifications are subject to change without advance notice.

Copyright by KOBELCO CRANES CO., LTD. No part of this catalog may be reproduced in any manner without notice.

KOBELCO CRANES CO., LTD.

17-1, Higashigotanda 2-chome, Shinagawa-ku, Tokyo 141-8626 JAPAN
Tel: +81-3-5789-2130 Fax: +81-3-5789-3372

Inquiries To:

KOBELCO is the corporate mark used by Kobe Steel on a variety of products and in the names of a number of Kobe Steel Group companies.