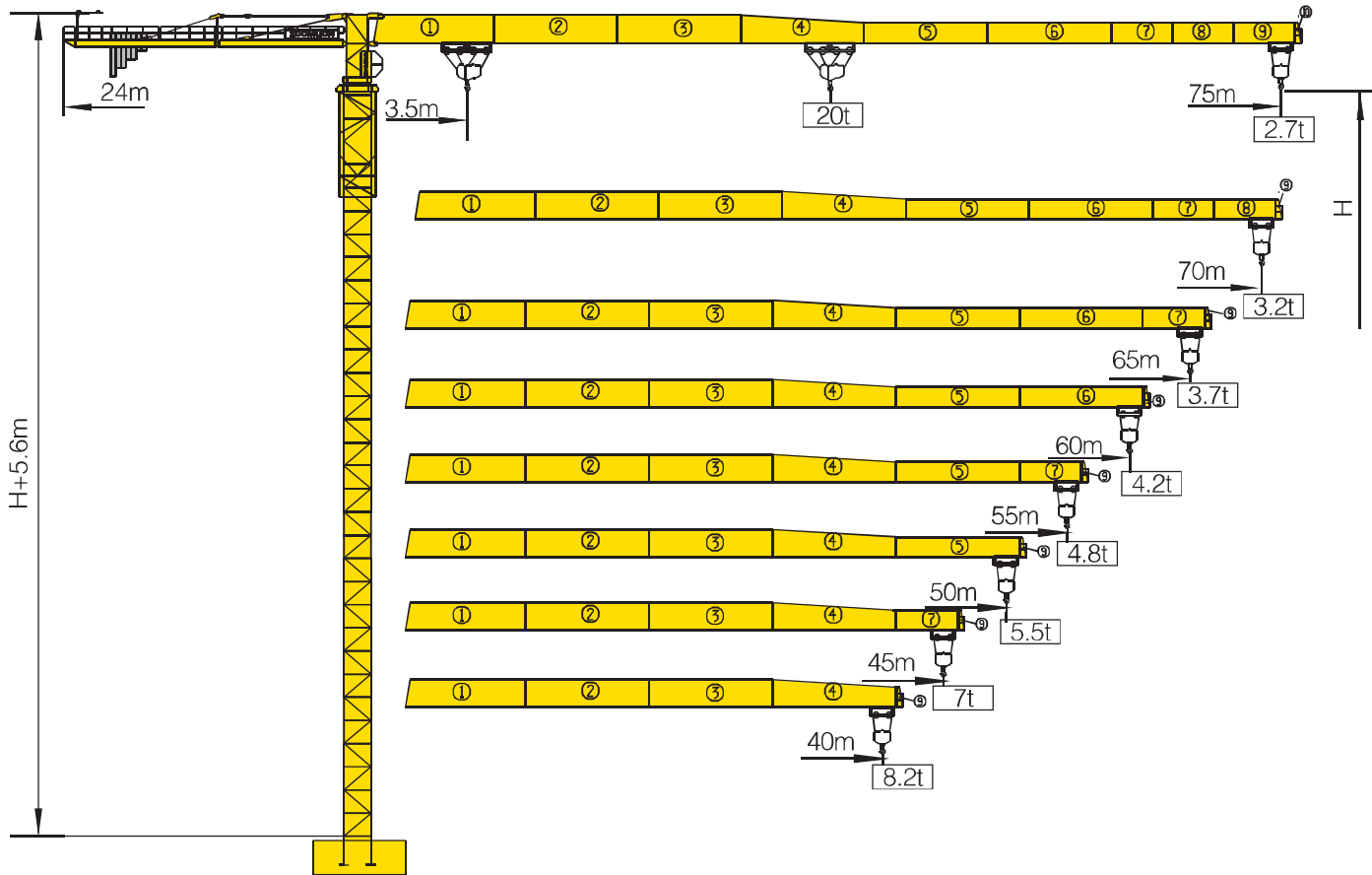


# TCT7527-20



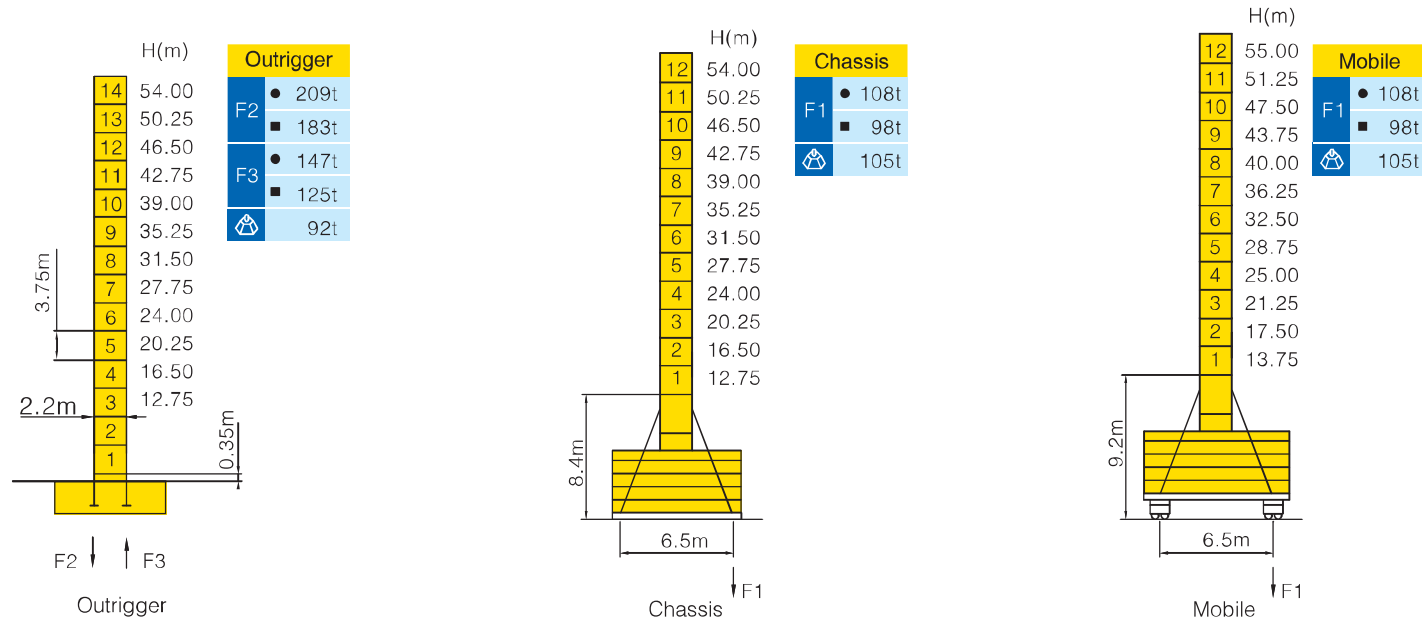
## Counter-jib ballast

		(Kg)	PHZ4000	PHZ3000	PHZ2000
75m	24m	24000	4	2	1
70m	24m	22000	3	2	2
65m	24m	20000	3	2	1
60m	24m	18000	3	2	0
55m	24m	16000	2	2	1
50m	24m	14000	2	2	0
45m	24m	12000	1	2	1
40m	24m	11000	2	1	0

## Working Height(m) @ Wall-tie Location(m)

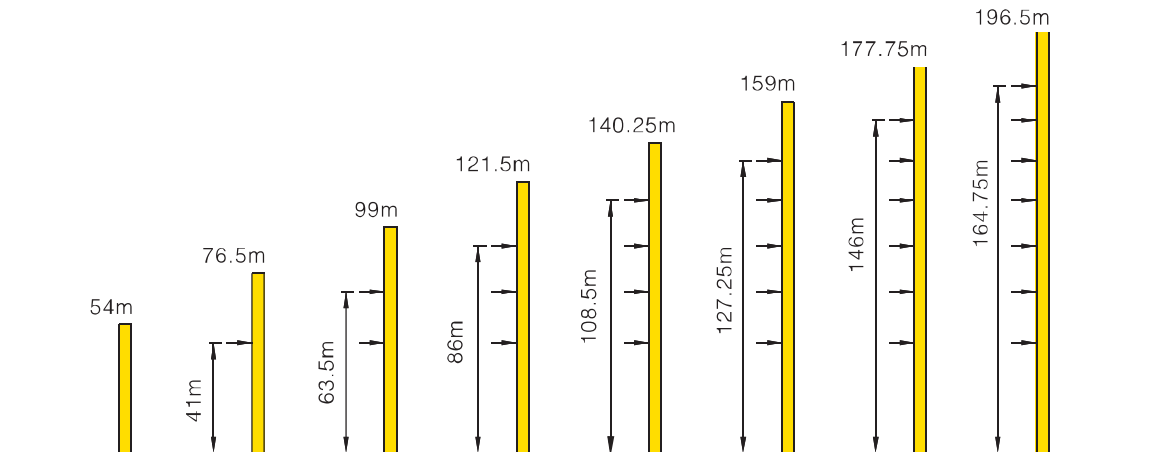
Model Detail	Mast Code	Wall-tie #1	Wall-tie #2	Wall-tie #3	Wall-tie #4	Wall-tie #5	Wall-tie #6	Wall-tie #7
TCT7527-20	HQ1-C	76.5 @ 41	99 @ 63.5	121.5 @ 86	140.25 @ 108.5	159 @ 127.25	177.75 @ 146	196.5 @ 164.75

## Masts Reactions



● Reactions in service    ■ Reactions out of service  
 ⊕ Without load and ballast with longest jib and maximum height  
 ⓘ For more erecting solutions, consult us!



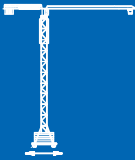



## Anchorage



## Load diagrams

		Max.Capacity m/t	20.0	25.0	30.0	35.0	38.0	40.0	45.0	50.0	53.0	55.0	60.0	65.0	70.0	75.0
75m (R=76.5)	♢	3.5—26.9m 10t	10.0		8.80	7.33	6.63	6.23	5.38	4.70	4.36	4.16	3.70	3.31	2.98	2.70
	♢♢	3.5—14.2m 20t	13.16	9.96	7.87	6.39	5.69	5.29	4.44	3.77	3.43	3.22	2.76	2.38	2.05	1.76
70m (R=71.5)	♢	3.5—28.1m 10t	10.0		9.26	7.73	7.01	6.59	5.70	5.00	4.64	4.42	3.95	3.54	3.20	
	♢♢	3.5—14.6m 20t	13.79	10.49	8.33	6.79	6.07	5.65	4.76	4.06	3.70	3.48	3.01	2.61	2.26	
65m (R=66.5)	♢	3.5—29.0m 10t	10.0		9.60	8.02	7.28	6.84	5.93	5.20	4.83	4.61	4.12	3.70		
	♢♢	3.5—15.1m 20t	14.31	10.90	8.67	7.08	6.34	5.90	4.99	4.26	3.89	3.67	3.18	2.76		
60m (R=61.5)	♢	3.5—29.4m 10t	10.0		9.78	8.17	7.41	6.97	6.04	5.30	4.93	4.70	4.20			
	♢♢	3.5—15.3m 20t	14.57	11.11	8.84	7.23	6.47	6.03	5.10	4.36	3.99	3.76	3.26			
55m (R=56.5)	♢	3.5—29.9m 10t	10.0		9.96	8.32	7.55	7.10	6.16	5.41	5.03	4.80				
	♢♢	3.5—15.5m 20t	14.85	11.33	9.02	7.38	6.62	6.16	5.22	4.47	4.09	3.86				
50m (R=51.5)	♢	3.5—30.3m 10t	10.0			8.45	7.67	7.22	6.26	5.50						
	♢♢	3.5—15.7m 20t	15.07	11.51	9.17	7.51	6.73	6.28	5.32	4.56						
45m (R=46.5)	♢	3.5—33.2m 10t	10.0			9.40	8.55	8.05	7.00							
	♢♢	3.5—17.2m 20t	16.77	12.86	10.29	8.47	7.61	7.11	6.06							
40m (R=41.5)	♢	3.5—33.7m 10t	10.0			9.58	8.71	8.20								
	♢♢	3.5—17.5m 20t	17.08	13.10	10.49	8.64	7.77	7.26								

## Mechanisms

		Hoisting QP20100A		
	Slewing	HPW75.130		
	0 ~ 0.6 r/min	3 × 7.5 kW		
	Trolleying	BP110A		
	0 ~ 100 m/min	11 kW		
	Travelling	ZAH52A-D ZCH52A-D		
	0 ~ 25m/min	4 × 5.2 kW		
 75 kW   620m Ⓞ ( 5 layers )  Ⓞ Consult us if overtop	V	♭	3t	100 m/min
		♭♭	6t	50 m/min
	IV	♭	5t	80 m/min
		♭♭	10t	40 m/min
	III	♭	10t	40 m/min
		♭♭	20t	20m/min
	380V(+10%–10%) 50Hz		108.5+4 × 5.2 kW	

For more mechanisms optional, consult us!