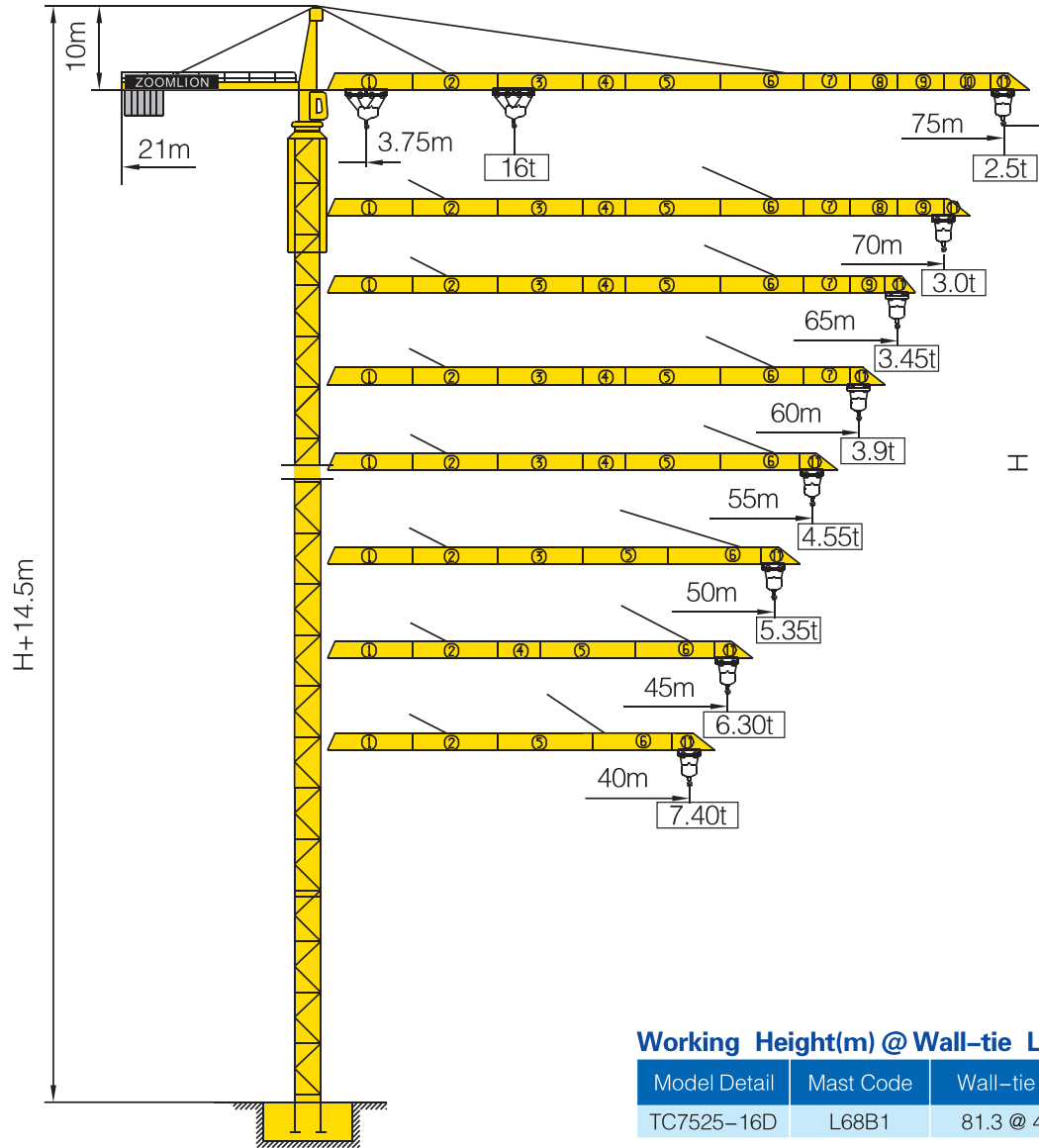


TC7525-16



Counter-jib ballast

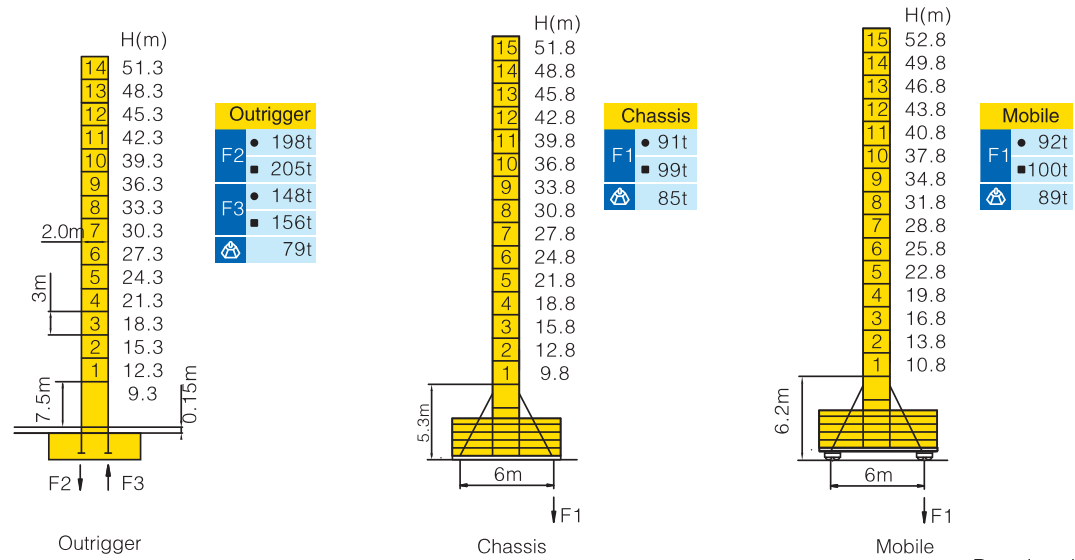
			PHZ4000	PHZ2500	PHZ1000
75m	21m	21000	4	2	0
70m	21m	20000	3	2	3
65m	21m	18500	4	1	0
60m	21m	17500	3	1	3
55m	21m	16000	4	0	0
50m	21m	14000	3	0	2
45m	21m	12000	3	0	0
40m	21m	10500	2	1	0

Working Height(m) @ Wall-tie Location(m)

Model Detail	Mast Code	Wall-tie #1	Wall-tie #2	Wall-tie #3	Wall-tie #4	Wall-tie #5	Wall-tie #6	Wall-tie #7
TC7525-16D	L68B1	81.3 @ 42	105.3 @ 69	132.3 @ 96	159.3 @ 123	186.3 @ 150	213.3 @ 177	240.3 @ 204

Masts Reactions

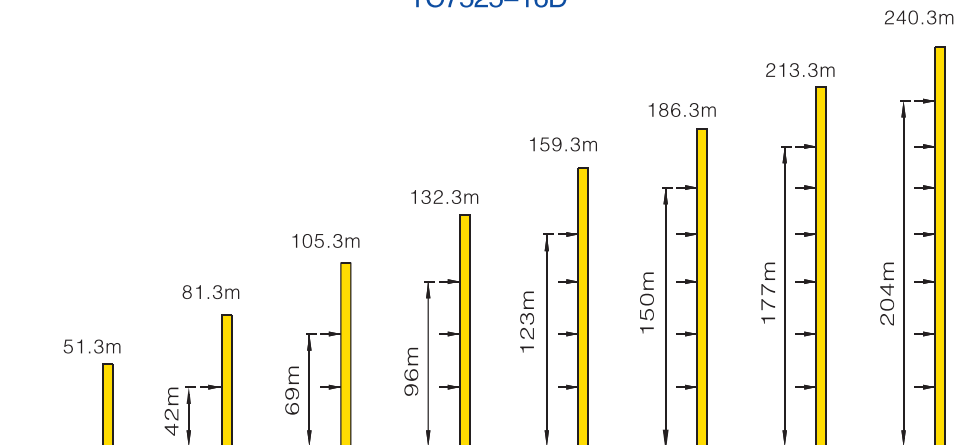
TC7525-16D




● Reactions in service ■ Reactions out of service
 ⊕ Without load and ballast with longest jib and maximum height
 ⊕ For more erecting solutions, consult us!

Anchorage




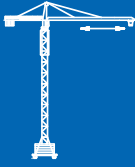


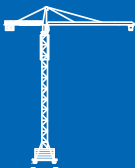


TC7525-16D



Load diagrams

		Max. Capacity m/t	18.0	23.0	25.0	28.0	35.0	40.0	43.0	45.0	48.0	50.0	53.0	55.0	58.0	60.0	63.0	65.0	68.0	70.0	75.0
75m (R=76.1)	8t	3.75—29.6m	8.00				6.58	5.61	5.14	4.87	4.49	4.27	3.97	3.78	3.53	3.38	3.17	3.04	2.86	2.75	2.50
	16t	3.75—15.5m	13.37	9.93	8.96	7.77	5.81	4.84	4.37	4.09	3.72	3.49	3.19	3.01	2.76	2.60	2.40	2.27	2.09	1.97	1.72
70m (R=71.1)	8t	3.75—31.5m	8.00				7.09	6.06	5.55	5.26	4.86	4.62	4.30	4.10	3.84	3.67	3.45	3.31	3.12	3.00	
	16t	3.75—16.5m	14.38	10.71	9.67	8.40	6.31	5.28	4.78	4.48	4.08	3.84	3.52	3.33	3.06	2.90	2.67	2.53	2.34	2.22	
65m (R=66.1)	8t	3.75—32.5m	8.00				7.35	6.28	5.77	5.46	5.05	4.80	4.47	4.27	3.99	3.83	3.59	3.45			
	16t	3.75—17m	14.9	11.12	10.0	8.74	6.58	5.51	4.99	4.68	4.27	4.03	3.69	3.49	3.22	3.05	2.82	2.67			
60m (R=61.1)	8t	3.75—33.04m	8.00				7.48	6.40	5.87	5.56	5.14	4.89	4.56	4.35	4.07	3.90					
	16t	3.75—17.2m	15.17	11.32	10.23	8.90	6.71	5.62	5.10	4.79	4.37	4.12	3.78	3.57	3.29	3.12					
55m (R=56.1)	8t	3.75—34.2m	8.00				7.80	6.67	6.13	5.81	5.37	5.11	4.76	4.55							
	16t	3.75—17.8m	15.81	11.81	10.68	9.30	7.02	5.90	5.35	5.03	4.60	4.34	3.99	3.77							
50m (R=51.1)	8t	3.75—35.53m	8.00				6.97	6.40	6.07	5.62	5.35										
	16t	3.75—18.5m	16.00	12.34	11.16	9.73	7.36	6.20	5.63	5.29	4.84	4.57									
45m (R=46.1)	8t	3.75—36.66m	8.00				7.23	6.65	6.30												
	16t	3.75—19.04m	16.00	12.80	11.59	10.11	7.66	6.46	5.87	5.52											
40m (R=41.1)	8t	3.75—37.4m	8.00				7.40														
	16t	3.75—19.41m	16.00	13.10	11.86	10.35	7.86	6.62													

Mechanisms

		Hoisting		QP1675			
	Slewing	HVV145B1.130A HVV145B2.130A		 60 kW	V 	4t	75 m/min
	0~0.6 r/min	2 × 145 Nm				8t	37.5 m/min
	Trolleying	BP110A		 600m ⊕ (6 layers)	IV 	8t	37.5 m/min
	0~100 m/min	11 kW				16t	18.75 m/min
	Travelling	ZAH52A-D ZCH52A-D		⊕ Consult us If overtop			
	0~25 m/min	4×5.2 kW					
		380V(+10%~10%) 50Hz		86+4 × 5.2 kW			

For more mechanisms optional, consult us!