

A4 EN 14439 - C50 - D50

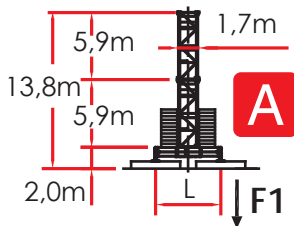
TOWER CONFIGURATION - REACTIONS

CONFIGURAZIONE TORRE - REAZIONI / CONFIGURATION TOUR - RÉACTIONS / TORRE DE CONFIGURACIÓN - REACCIONES / КОНФИГУРАЦИЯ БАШНИ — РЕАКЦИИ

EN 14439 - C50

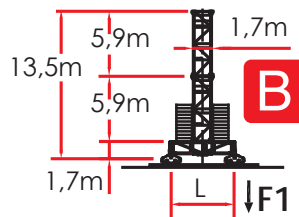
1,7 m L = 4,5 m - A

	H (m)	Z (t)	F1(kN)	
7	-	-	-	
6	-	-	-	
5	2,95 m	40,90	103,68	810
4	5,9 m	37,95	93,48	763
3	5,9 m	32,05	93,48	725
2	5,9 m	26,15	83,28	692
+1	5,9 m	20,25	83,28	664



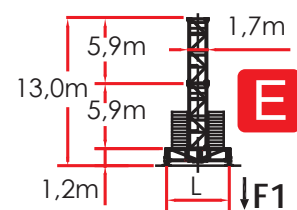
1,7 m L = 4,5 m - B

	H (m)	Z (t)	F1(kN)	
7	-	-	-	
6	-	-	-	
5	2,95 m	40,35	102	804
4	5,9 m	37,40	91,8	756
3	5,9 m	31,50	91,8	719
2	5,9 m	25,60	81,6	686
+1	5,9 m	19,70	81,6	658



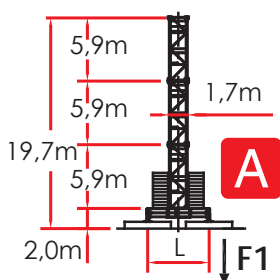
1,7 m L = 4,5 m - E

	H (m)	Z (t)	F1(kN)	
7	-	-	-	
6	-	-	-	
5	2,95 m	40,15	102	804
4	5,9 m	37,20	91,8	756
3	5,9 m	31,30	91,8	719
2	5,9 m	25,40	81,6	686
+1	5,9 m	19,50	81,6	658



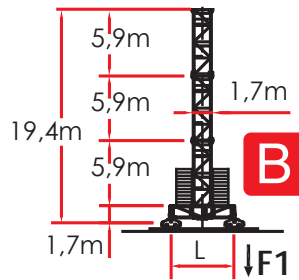
1,7 m L = 6,0 m - A

	H (m)	Z (t)	F1(kN)	
7	-	-	-	
6	-	-	-	
5	2,95 m	40,90	62,88	646
4	5,9 m	37,95	62,88	603
3	5,9 m	32,05	62,88	574
2	5,9 m	26,15	62,88	547
+1	5,9 m	20,25	62,88	525



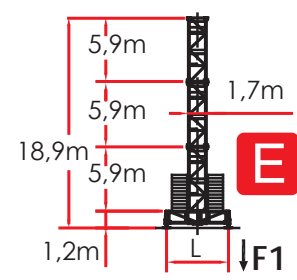
1,7 m L = 6,0 m - B

	H (m)	Z (t)	F1(kN)	
7	-	-	-	
6	-	-	-	
5	2,95 m	40,35	61,2	614
4	5,9 m	37,40	51,0	572
3	5,9 m	31,50	51,0	543
2	5,9 m	25,60	51,0	516
+1	5,9 m	19,70	51,0	494



1,7 m L = 6,0 m - E

	H (m)	Z (t)	F1(kN)	
7	-	-	-	
6	-	-	-	
5	2,95 m	40,15	61,2	614
4	5,9 m	37,20	51,0	572
3	5,9 m	31,30	51,0	543
2	5,9 m	25,40	51,0	516
+1	5,9 m	19,50	51,0	494



TOWER CONFIGURATION - REACTIONS

CONFIGURAZIONE TORRE - REAZIONI / CONFIGURATION TOUR - RÉACTIONS / TORRE DE CONFIGURACIÓN - REACCIONES / КОНФИГУРАЦИЯ БАШНИ - РЕАКЦИИ

EN 14439 - C50

▣ 1,7 m - D

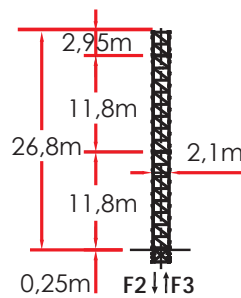
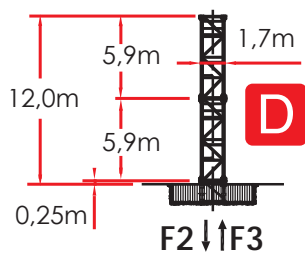
	H (m)	F2(kN)	F3(kN)
7 -	-	-	-
6 -	-	-	-
5	2,95 m	39,15	1278
4	5,9 m	36,20	1222
3	5,9 m	30,30	1123
2	5,9 m	24,40	1045
+1	5,9 m	18,50	982

▣ 2,1 m

	H (m)	F2(kN)	F3(kN)
7 -	-	-	-
6 -	-	-	-
5 -	-	-	-
4	2,95 m	51,15	1640
3	5,9 m	48,20	1445
2	5,9 m	42,30	1130
+1	5,9 m	36,40	1085

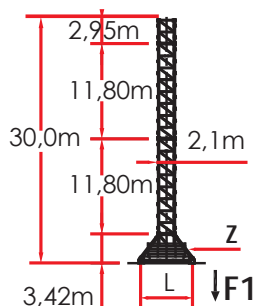


Comply with the specified ballast / Attenersi alla zavorra indicata / S'en tenir au lest indiqué / respetar el peso de lastre indicado / Соблюдать указанный балласт



▣ 2,1 m L = 6,0 m

	H (m)	Z (t)	F1(kN)
7 -	-	-	-
6 -	-	-	-
5 -	-	-	-
4	2,95 m	51,40	70,62
3	5,9 m	48,45	64,16
2	5,9 m	42,55	51,24
+1	5,9 m	36,65	45,22



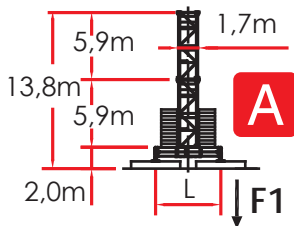
TOWER CONFIGURATION - REACTIONS

CONFIGURAZIONE TORRE - REAZIONI / CONFIGURATION TOUR - RÉACTIONS / TORRE DE CONFIGURACIÓN - REACCIONES / КОНФИГУРАЦИЯ БАШНИ - РЕАКЦИИ

EN 14439 - D50

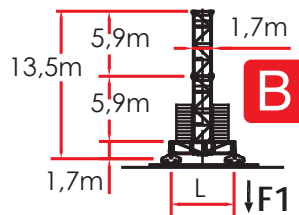
1,7 m L = 4,5 m - A

	H (m)	Z (t)	F1(kN)
7	-	-	-
6	-	-	-
5	2,95 m	40,90	103,68
4	5,9 m	37,95	93,48
3	5,9 m	32,05	93,48
2	5,9 m	26,15	83,28
+1	5,9 m	20,25	83,28



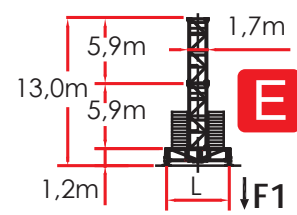
1,7 m L = 4,5 m - B

	H (m)	Z (t)	F1(kN)
7	-	-	-
6	-	-	-
5	2,95 m	40,35	102
4	5,9 m	37,40	91,8
3	5,9 m	31,50	91,8
2	5,9 m	25,60	81,6
+1	5,9 m	19,70	81,6



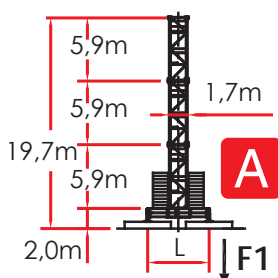
1,7 m L = 4,5 m - E

	H (m)	Z (t)	F1(kN)
7	-	-	-
6	-	-	-
5	2,95 m	40,15	102
4	5,9 m	37,20	91,8
3	5,9 m	31,30	91,8
2	5,9 m	25,40	81,6
+1	5,9 m	19,50	81,6



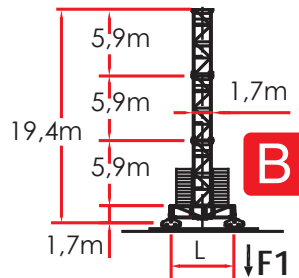
1,7 m L = 6,0 m - A

	H (m)	Z (t)	F1(kN)
6	-	-	-
5	-	-	-
4	2,95 m	40,90	62,88
3	5,9 m	37,95	62,88
2	5,9 m	32,05	62,88
+1	5,9 m	26,15	62,88



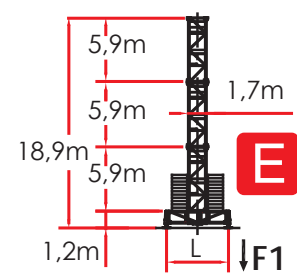
1,7 m L = 6,0 m - B

	H (m)	Z (t)	F1(kN)
6	-	-	-
5	-	-	-
4	2,95 m	40,35	61,2
3	5,9 m	37,40	51,0
2	5,9 m	31,50	51,0
+1	5,9 m	25,60	51,0



1,7 m L = 6,0 m - E

	H (m)	Z (t)	F1(kN)
6	-	-	-
5	-	-	-
4	2,95 m	40,15	61,2
3	5,9 m	37,20	51,0
2	5,9 m	31,30	51,0
+1	5,9 m	25,40	51,0



TOWER CONFIGURATION - REACTIONS

CONFIGURAZIONE TORRE - REAZIONI / CONFIGURATION TOUR - RÉACTIONS / TORRE DE CONFIGURACIÓN - REACCIONES / КОНФИГУРАЦИЯ БАШНИ - РЕАКЦИИ

EN 14439 - D50

▣ 1,7 m - D

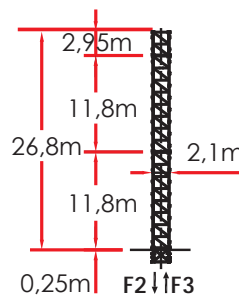
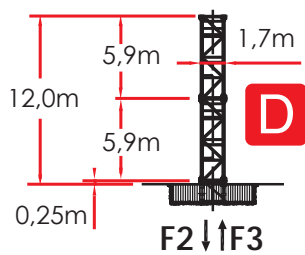
	H (m)	F2(kN)	F3(kN)
7 -	-	-	-
6 -	-	-	-
5	2,95 m	39,15	1388
4	5,9 m	36,20	1222
3	5,9 m	30,30	1123
2	5,9 m	24,40	1045
+1	5,9 m	18,50	982

▣ 2,1 m

	H (m)	F2(kN)	F3(kN)
7 -	-	-	-
6 -	-	-	-
5 -	-	-	-
4 -	-	-	-
3	5,9 m	48,25	1931
2	5,9 m	42,35	1130
+1	5,9 m	36,45	1085

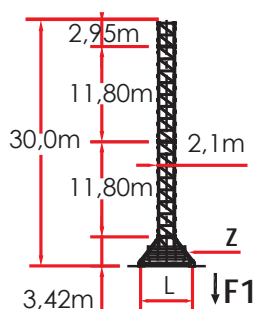


Comply with the specified ballast / Attenersi alla zavorra indicata / S'en tenir au lest indiqué / respetar el peso de lastre indicado / Соблюдать указанный балласт



▣ 2,1 m L = 6,0 m

	H (m)	Z (t)	F1(kN)
7 -	-	-	-
6 -	-	-	-
5 -	-	-	-
4 -	-	-	-
3	5,9 m	48,50	90
2	5,9 m	42,60	57,7
+1	5,9 m	36,70	45,22



LOAD DIAGRAMS 5.0 T

DIAGRAMMA DI PORTATA / DIAGRAMME DE CHARGE UTILE / CURVAS DE CARGA / ДИАГРАММА ГРУЗОПОДЪЕМНОСТИ

5.000 Kg

JIB	27.5	33.0	37.0	43.0	50.0	56.0	60.0	66.0	70.0
1,6 ▶	27,5	33,0	37,0	43,0	43,8	43,4	43,2	37,6	29,6
14	5000	5000	5000	5000	5000	5000	5000	5000	5000
16	5000	5000	5000	5000	5000	5000	5000	5000	5000
17	5000	5000	5000	5000	5000	5000	5000	5000	5000
18	5000	5000	5000	5000	5000	5000	5000	5000	5000
19	5000	5000	5000	5000	5000	5000	5000	5000	5000
20	5000	5000	5000	5000	5000	5000	5000	5000	5000
21	5000	5000	5000	5000	5000	5000	5000	5000	5000
22	5000	5000	5000	5000	5000	5000	5000	5000	5000
23	5000	5000	5000	5000	5000	5000	5000	5000	5000
24	5000	5000	5000	5000	5000	5000	5000	5000	5000
25	5000	5000	5000	5000	5000	5000	5000	5000	5000
26	5000	5000	5000	5000	5000	5000	5000	5000	5000
27,5	5000	5000	5000	5000	5000	5000	5000	5000	5000
28		5000	5000	5000	5000	5000	5000	5000	5000
29		5000	5000	5000	5000	5000	5000	5000	5000
33		5000	5000	5000	5000	5000	5000	5000	4915
35			5000	5000	5000	5000	5000	5000	4580
36			5000	5000	5000	5000	5000	5000	4427
37			5000	5000	5000	5000	5000	5000	4282
40				5000	5000	5000	5000	4902	3892
42				5000	5000	5000	5000	4625	3664
43				5000	5000	5000	5000	4496	3558
48					4949	4880	4602	3934	3095
50					4715	4648	4382	3741	2936
54						4238	3991	3399	2655
56						4055	3818	3247	2530
59							3579	3038	2358
60							3505	2973	2304
64								2734	2018
66								2625	1868
68									1934
70									1855





ULTRALIFT _ALL INTERMEDIATE LOADS ARE DECREASED OF 10% IF THE CRANE IS NOT EQUIPPED WITH ULTRALIFT CONTROL / SENZA IL SISTEMA ULTRALIFT TUTTE LE PORTATE INTERMEDIE DIMINUISCONO IL CARICO DEL 10% / LES CHARGES INTERMEDIARES SONT DIMINUEES DE 10% SI LA GRUE N'EST PAS EQUIPE D'UN CONTROLE ULTRALIFT / SIN EL SISTEMA ULTRALIFT LOS MISAURA INTERMEDIOS DISMINUIR EL CARICO DEL 10% / БЕЗ ULTRALIFT ПРОМЕЖУТОЧНОЙ УМЕНЬШАЕТСЯ НА 10% НАГРУЗКИ.

MRT 223

LOAD DIAGRAMS 10 T

DIAGRAMMA DI PORTATA / DIAGRAMME DE CHARGE UTILE / CURVAS DE CARGA / ДИАГРАММА ГРУЗОПОДЪЕМНОСТИ

10.000 Kg

JIB	27.5	33.0	37.0	43.0	50.0	56.0	60.0	66.0	70.0
1,6 ▶	26,7	26,6	26,3	25,9	25,6	25,3	24,1	21,3	17,6
14	10000	10000	10000	10000	10000	10000	10000	10000	10000
16	10000	10000	10000	10000	10000	10000	10000	10000	10000
17	10000	10000	10000	10000	10000	10000	10000	10000	10000
18	10000	10000	10000	10000	10000	10000	10000	10000	9775
19	10000	10000	10000	10000	10000	10000	10000	10000	9183
20	10000	10000	10000	10000	10000	10000	10000	10000	8653
21	10000	10000	10000	10000	10000	10000	10000	10000	8175
22	10000	10000	10000	10000	10000	10000	10000	9615	7743
23	10000	10000	10000	10000	10000	10000	10000	9137	7350
24	10000	10000	10000	10000	10000	10000	10000	8700	6991
25	10000	10000	10000	10000	10000	10000	9605	8300	6661
26	10000	10000	10000	9959	9837	9706	9185	7932	6358
27,5	9985	9823	9720	9542	9424	9298	8797	7592	6078
28		9426	9326	9155	9041	8920	8437	7277	5819
29		9057	8961	8795	8685	8569	8103	6984	5578
33		7810	7726	7581	7485	7383	6975	5995	4765
35			7217	7081	6990	6894	6511	5588	4430
36			6985	6852	6764	6671	6298	5402	4277
37			6765	6636	6551	6460	6097	5226	4132
40				6054	5975	5891	5557	4752	3742
42				5713	5638	5559	5240	4475	3514
43				5555	5482	5404	5093	4346	3408
48					4799	4730	4452	3784	2945
50					4565	4498	4232	3591	2786
54						4088	3841	3249	2505
56						3905	3668	3097	2380
59							3429	2888	2208
60							3355	2823	2154
64								2584	1957
66								2475	1868
68									1784
70									1705

ULTRALIFT _ALL INTERMEDIATE LOADS ARE DECREASED OF 10% IF THE CRANE IS NOT EQUIPPED WITH ULTRALIFT CONTROL / SENZA IL SISTEMA ULTRALIFT TUTTE LE PORTATE INTERMEDIE DIMINUISCONO IL CARICO DEL 10% / LES CHARGES INTERMEDIARES SONT DIMINUÉES DE 10% SI LA GRUE N'EST PAS ÉQUIPÉ D'UN CONTROLE ULTRALIFT / SIN EL SISTEMA ULTRALIFT LOS MISAURA INTERMEDIOS DISMINUIR EL CARICO DEL 10% / БЕЗ ULTRALIFT ПРОМЕЖУТОЧНОЙ УМЕНЬШАЕТСЯ НА 10% НАГРУЗКИ.

LOAD DIAGRAMS 6.0 T

DIAGRAMMA DI PORTATA / DIAGRAMME DE CHARGE UTILE / CURVAS DE CARGA /
 ДИАГРАММА ГРУЗОПОДЪЕМНОСТИ

6.000 Kg

JIB	27.5	33.0	37.0	43.0	50.0	56.0	60.0	66.0	70.0
1,6 ▶	27,5	33,0	37,0	40,7	40,2	37,5	37,0	33,4	26,1
14	6000	6000	6000	6000	6000	6000	6000	6000	6000
16	6000	6000	6000	6000	6000	6000	6000	6000	6000
17	6000	6000	6000	6000	6000	6000	6000	6000	6000
18	6000	6000	6000	6000	6000	6000	6000	6000	6000
19	6000	6000	6000	6000	6000	6000	6000	6000	6000
20	6000	6000	6000	6000	6000	6000	6000	6000	6000
21	6000	6000	6000	6000	6000	6000	6000	6000	6000
22	6000	6000	6000	6000	6000	6000	6000	6000	6000
23	6000	6000	6000	6000	6000	6000	6000	6000	6000
24	6000	6000	6000	6000	6000	6000	6000	6000	6000
25	6000	6000	6000	6000	6000	6000	6000	6000	6000
26	6000	6000	6000	6000	6000	6000	6000	6000	6000
27,5	6000	6000	6000	6000	6000	6000	6000	6000	6000
28		6000	6000	6000	6000	6000	6000	6000	5844
29		6000	6000	6000	6000	6000	6000	6000	5608
33		6000	6000	6000	6000	6000	6000	6000	4812
35			6000	6000	6000	6000	6000	5633	4483
36			6000	6000	6000	6000	6000	5450	4333
37			6000	6000	6000	6000	6000	5277	4192
40				6000	6000	5964	5624	4661	3810
42				5807	5723	5635	5311	4811	3586
43				5650	5568	5482	5166	4411	3482
48					4892	4815	4533	3858	3029
50					4660	4586	4316	3668	2874
54						4181	3930	3332	2598
56						4000	3759	3182	2476
59							3523	2976	2307
60							3450	2912	2255
64								2677	2062
66								2570	1975
68									1892
70									1815






ULTRALIFT _ALL INTERMEDIATE LOADS ARE DECREASED OF 10% IF THE CRANE IS NOT EQUIPPED WITH ULTRALIFT CONTROL / SENZA IL SISTEMA ULTRALIFT TUTTE LE PORTATE INTERMEDIE DIMINUISCONO IL CARICO DEL 10% / LES CHARGES INTERMEDIAIRES SONT DIMINUEES DE 10% SI LA GRUE N'EST PAS ÉQUIPÉ D'UN CONTROLE ULTRALIFT / SIN EL SISTEMA ULTRALIFT LOS MENSURAS INTERMEDIAS DISMINUIR EL CARICO DEL 10% / БЕЗ ULTRALIFT ПРОМЕЖУТОЧНОЙ УМЕНЬШАЕТСЯ НА 10% НАГРУЗКИ.

MRT 223

LOAD DIAGRAMS 12.0 T

DIAGRAMMA DI PORTATA / DIAGRAMME DE CHARGE UTILE / CURVAS DE CARGA /
 ДИАГРАММА ГРУЗОПОДЪЕМНОСТИ

12.000 Kg

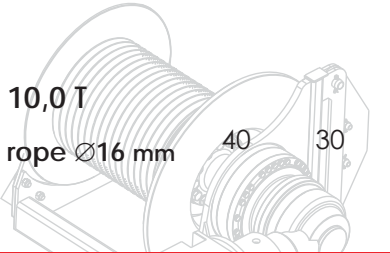
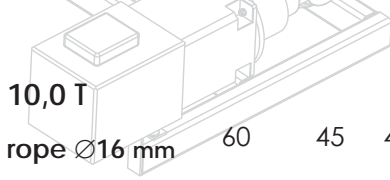
JIB	27.5	33.0	37.0	43.0	50.0	56.0	60.0	66.0	70.0
1,6 ▶	22,6	22,5	22,2	21,9	21,6	21,3	20,3	17,8	14,8
14	12000	12000	12000	12000	12000	12000	12000	12000	12000
16	12000	12000	12000	12000	12000	12000	12000	12000	10944
17	12000	12000	12000	12000	12000	12000	12000	12000	10205
18	12000	12000	12000	12000	12000	12000	12000	11876	9553
19	12000	12000	12000	12000	12000	12000	12000	11167	8973
20	12000	12000	12000	12000	12000	12000	12000	10533	8454
21	12000	12000	12000	12000	12000	12000	11543	9962	7986
22	12000	12000	12000	11917	11753	11582	10951	9445	7563
23	11777	11692	11561	11335	11178	11015	10413	8975	7178
24	11227	11145	11019	10803	10653	10497	9921	8546	6826
25	10722	10644	10523	10316	10172	10022	9470	8152	6504
26	10257	10182	10066	9867	9729	9585	9055	7789	6207
27,5	9830	9755	9644	9453	9320	9182	8672	7454	5933
28		9361	9253	9069	8941	8808	8317	7144	5679
29		8994	8890	8713	8589	8461	7987	6856	5443
33		7755	7664	7509	7401	7289	6874	5884	4647
35			7159	7013	6911	6805	6415	5483	4318
36			6928	6786	6687	6585	6205	5300	4168
37			6710	6572	6476	6376	6007	5127	4027
40				5995	5906	5814	5474	4661	3645
42				5657	5573	5485	5161	4388	3421
43				5500	5418	5332	5016	4261	3317
48					4742	4665	4383	3708	2864
50					4510	4436	4166	3518	2709
54						4031	3780	3182	2433
56						3850	3609	3032	2311
59							3373	2826	2142
60							3300	2762	2090
64								2527	1897
66		+ 100 Kg						2420	1810
68									1727
70									1650

ULTRALIFT _ALL INTERMEDIATE LOADS ARE DECREASED OF 10% IF THE CRANE IS NOT EQUIPPED WITH ULTRALIFT CONTROL / SENZA IL SISTEMA ULTRALIFT TUTTE LE PORTATE INTERMEDIE DIMINUISCONO IL CARICO DEL 10% / LES CHARGES INTERMEDIARES SONT DIMINUÉES DE 10% SI LA GRUE N'EST PAS ÉQUIPÉ D'UN CONTROLE ULTRALIFT / SIN EL SISTEMA ULTRALIFT LOS MISAURA INTERMEDIOS DISMINUIR EL CARICO DEL 10% / БЕЗ ULTRALIFT ПРОМЕЖУТОЧНОЙ УМЕНЬШАЕТСЯ НА 10% НАГРУЗКИ.

HOISTING WINCH INVERTER - PERFORMANCES

MECCANISMI / MÉCANISMES / MECANISMOS / МЕХАНИЗМЫ

400 VOLT ± 5% - 50Hz _DIRECTIVE 14/12 - 2005/88/CE

HOISTING WINCH ARGANO	POWER POTENZA CV-ch Ps-hp	ROPE FUNE m.	STEP MARCIA	LOAD CARICO Kg.	SPEED VELOCITÀ m/min.	LOAD CARICO Kg.	SPEED VELOCITÀ m/min.
 10,0 T rope Ø16 mm	40	30	220	1	5000	5	10000
				2	5000	15	10000
				3	5000	25	10000
				4	3000	40	6000
				5	1500	50	3000
				5 (*)	600	60	1200
 10,0 T rope Ø16 mm	60	45	230 430 LB	1	5000	8	10000
				2	5000	24	10000
				3	5000	40	10000
				4	3000	64	6000
				5	2000	80	4000
				5 (*)	750	96	1500
12,0 T rope Ø16 mm	75	55	230 430 LB	1	6000	8	12000
				2	6000	24	12000
				3	6000	40	12000
				4	3600	64	7200
				5	2500	80	5000
				5 (*)	1000	96	2000
12,0 T rope Ø16 mm	100	73,5	300 500 LB	1	6000	8	12000
				2	6000	30	12000
				3	6000	52	12000
				4	4000	92	8000
				5	2500	136	5000
ABSORPTIONS / ASSORBIMENTI				37 kW	49 kW	57 kW	72 kW



SLEWING

 0,26 / 0,48 / 0,7 min⁻¹

2 X 4,8 kW

(*) SPEED AUTOMATICALLY CONTROLLED BY A CURRENT SENSOR / VELOCITÀ REGOLATA AUTOMATICAMENTE DA SENSORE DI CORRENTE / VITESSE RÉGLÉE AUTOMATIQUÉMENT PAR CAPTEUR DE COURANT / ACELERAR CONTROLADO AUTOMÁTICAMENTE POR UN SENSOR DE CORRIENTE / СКОРОСТЬ АВТОМАТИЧЕСКИ РЕГУЛИРУЕТСЯ ДАТЧИКОМ ТОКА



TROLLEY

16,0 / 44,0 / 70,0 / 79,0 (*) m/min

6,6 kW



TRAVELLING

20 m/min

2 X 4 kW

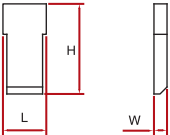
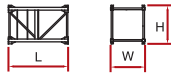


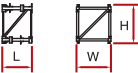






PACKING LIST

LISTA DEI COLLI / LISTE DE COLISAGE / LISTA DE CONTENIDO / ВЕС И ГАБАРИТНЫЕ РАЗМЕРЫ

DESCRIPTION DENOMINAZIONE	ITEM POS.	PIECES PEZZI	DRAWING DISEGNO	DIMENSIONS mm			WEIGHT kg			
				L	W	H	UNIT	TOTAL		
JIB ELEMENT / ELEMENTO DI FRECCIA / ELÈMENT DE FLÈCHE / ELEMENTO DE FLECHA / элемент стрелка	1	n. 1		11,975	1,795	2,290	3600	-		
		n. 2		6,190	1,500	2,290	1430	-		
		n. 3		6,165	1,500	2,090	1120	-		
		n. 4		6,115	1,500	2,090	1025	-		
		n. 5		6,110	1500	2,090	935	-		
		n. 6		6,105	1,500	1,690	785	-		
		n. 7		6,050	1,500	1,660	620	-		
		n. 8		6,040	1,500	1,660	575	-		
		n. 9		4,140	1,500	1,210	370	-		
		n. 10		5,995	1,500	1,210	465	-		
		n. 11		5,920	1,500	1,180	390	-		
		n. 12		4,070	1,500	1,210	285	-		
JIB POINT / PUNTALE FRECCIA / ELÈMENT POINTE / PUNTALE DE FLECHA / наконечник стрелка	1			0,500	1,500	1,385	90	-		
COUNTERJIB-TOURNABLE, HOISTING WINCH, TROLLEY JIB, ELECTRICAL BOX. TERMINAL ELEMENT* / CONTROFRECCIA - GIREVOLE, ARGANO SOLL., QUADRO ELETR., CARRELLO FRECCIA, PORTABLOCCHI* / CONTREFLÈCHE TOURNANTE, TREUIL DE LEVAGE, CHARIOT DE FLÈCHE, ARMOIRE ELECTRIQUE, ELÈMENT TERMINAL* / CONTRAFLECHA GIRATORIO, CABRESTANTE DE ELEVACIÓN, CUADRO ELÉCTRICO, CARRO FLECHA / контрстрела-вращения, лебедка, электрические, корзина стрелки, блокодержатель*	2	1		L	13,350	2,605	2,400	10055	-	
		1		L1	11,950	2,605	2,400	9015	-	
	3	1				16,480	2,605	2,400	10860	-
		1			HC4	2,300	3,200	1,900	4150	-
		1			HC5	1,900	3,200	1,900	4540	-
1			*	3,400	2,260	2,320	900	-		
ACCESS BALCONY, CABIN / BALLATOIO CABINA, CABINA / PORTE CABINE / BALCÓN CORRIDO CABINA, CABINA / площадка кабины, кабина	4	1			3,450	1,600	2,240	861	-	



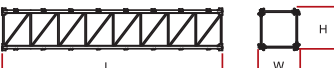




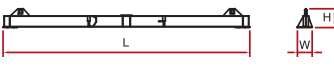

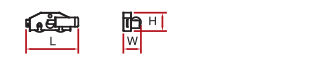

PACKING LIST

LISTA DEI COLLI / LISTE DE COLISAGE / LISTA DE CONTENIDO / ВЕС И ГАБАРИТНЫЕ РАЗМЕРЫ

DESCRIPTION DENOMINAZIONE	ITEM POS.	PIECES PEZZI	DRAWING DISEGNO		DIMENSIONS mm			WEIGHT Kg	
					L	W	H	UNIT	TOTAL
COUNTERWEIGHT BLOCK / BLOCCHI DI CONTRAPPESO / CONTRE-POIDS / BLOQUES DE CONTRAPESO / блок противовеса	5	2		A183	1,670	0,480	2,810	4505	9010
		4		B183	1,670	0,270	2,810	2535	10140
		4		C183	1,670	0,170	2,810	1600	6400
TOWER ELEMENT / ELEMENTO DI TORRE ELÈMENT DE MATURE / ELEMENTO DE TORRE / башенный элемент	6	-			2,950	1,900	1,700	1350	-
		-			5,900	1,900	1,700	2295	-
		-			11,800	1,900	1,700	4175	-
EXPENDABLE FOUNDATION ELEMENT / TRONCHETTO DI FONDAZIONE / ELÈMENT A SCELLER / TRONCO DE FUNDACIÓN / СТВОЛ ОСНОВАНИЯ	9	1			1,465	1,980	1,980	830	-
BASE MAIN BEAM / TRAVE PRINCIPALE CROCIERA DI BASE / POUTRE DE CHASSIS DE BASE / VIGA PRINCIPAL DE LA CRUCETA DE BASE / главная балка крестовины основания	10	1		4,5 x 4,5 m	6,524	0,780	0,960	2595	-
				6,0 x 6,0 m	8,645	0,780	0,960	3475	-
HALF BASE BEAM / SEMITRAVE DI BASE / SEMIPOUTRE DE CHASSIS DE BASE / MEDIA VIGA DE LA CRUCETA DE BASE / полубалка крестовины основания	11	2		4,5 x 4,5 m	3,212	0,680	0,974	1235	2470
				6,0 x 6,0 m	4,323	0,680	0,974	1745	3490
CONCRETE PAD / BLOCCO DI APPOGGIO / SABOT EN BÉTON / BLOQUE DE APOYO / опорный блок	12	4			3,600	0,900	0,750	5520	22080
DRIVING BOGIE / BILANCINO TRASL. FOLLE / BOGGIE FOU / BALANCÍN DE TRASLACIÓN LOCO / не приводной балансир для горизонтального перемещения	13	2			1,315	0,222	0,540	600	1200
DRIVEN BOGIE / BILANCINO TRASLAZIONE MOTORIZZATO / BOGGIE MOTORISÉÉ / BALANCÍN DE TRASLACIÓN MOTORIZADO / приводной балансир горизонтального перемещения	14	2			1,427	0,492	0,540	765	1530
BASE BALLAST BLOCK / BLOCCO DI ZAVORRA / LEST DE BASE / BLOQUE DE LASTRE / блок балласта	15	-			3,600	1,200	0,300	2950	-

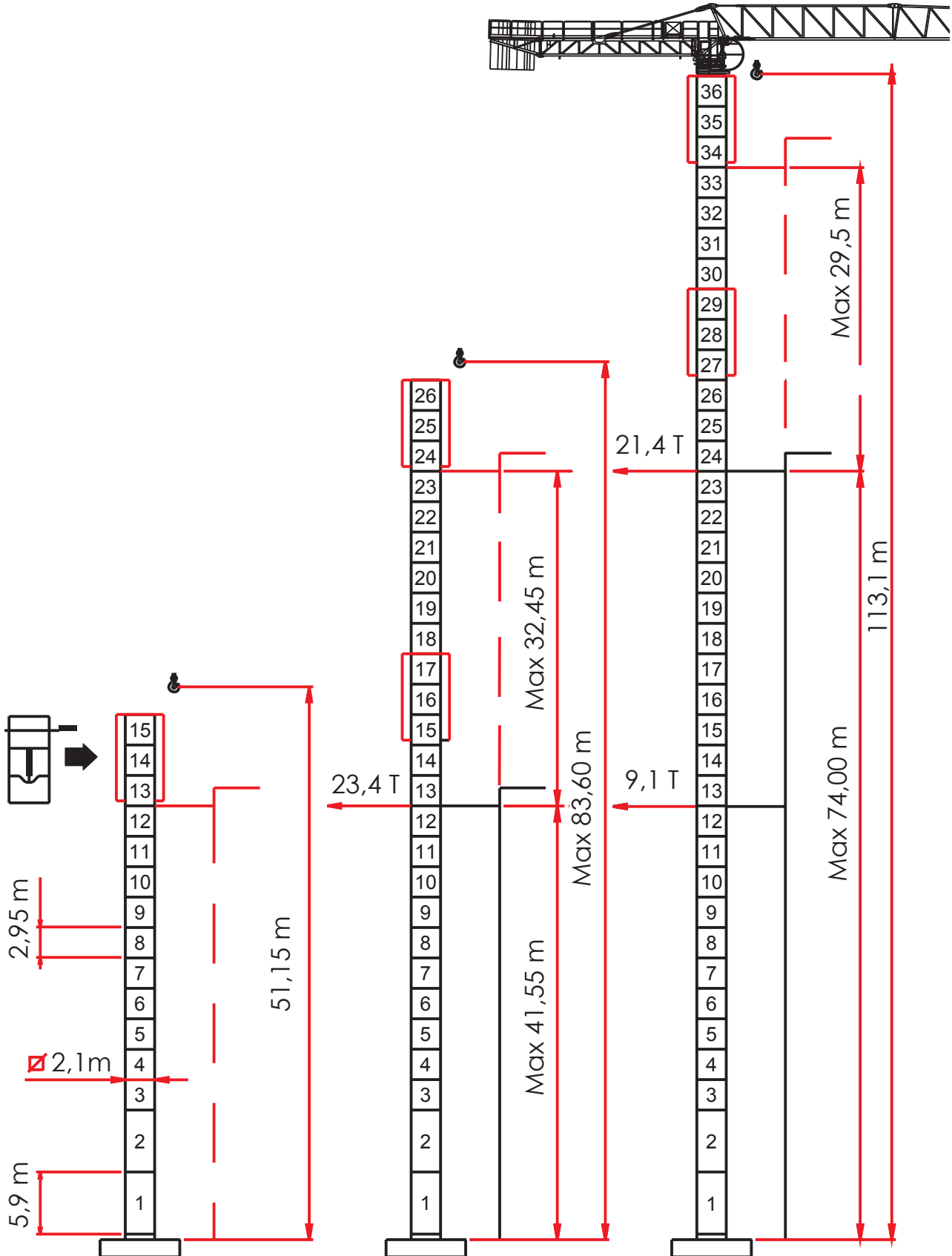
PACKING LIST

LISTA DEI COLLI / LISTE DE COLISAGE / LISTA DE CONTENIDO / ВЕС И ГАБАРИТНЫЕ РАЗМЕРЫ

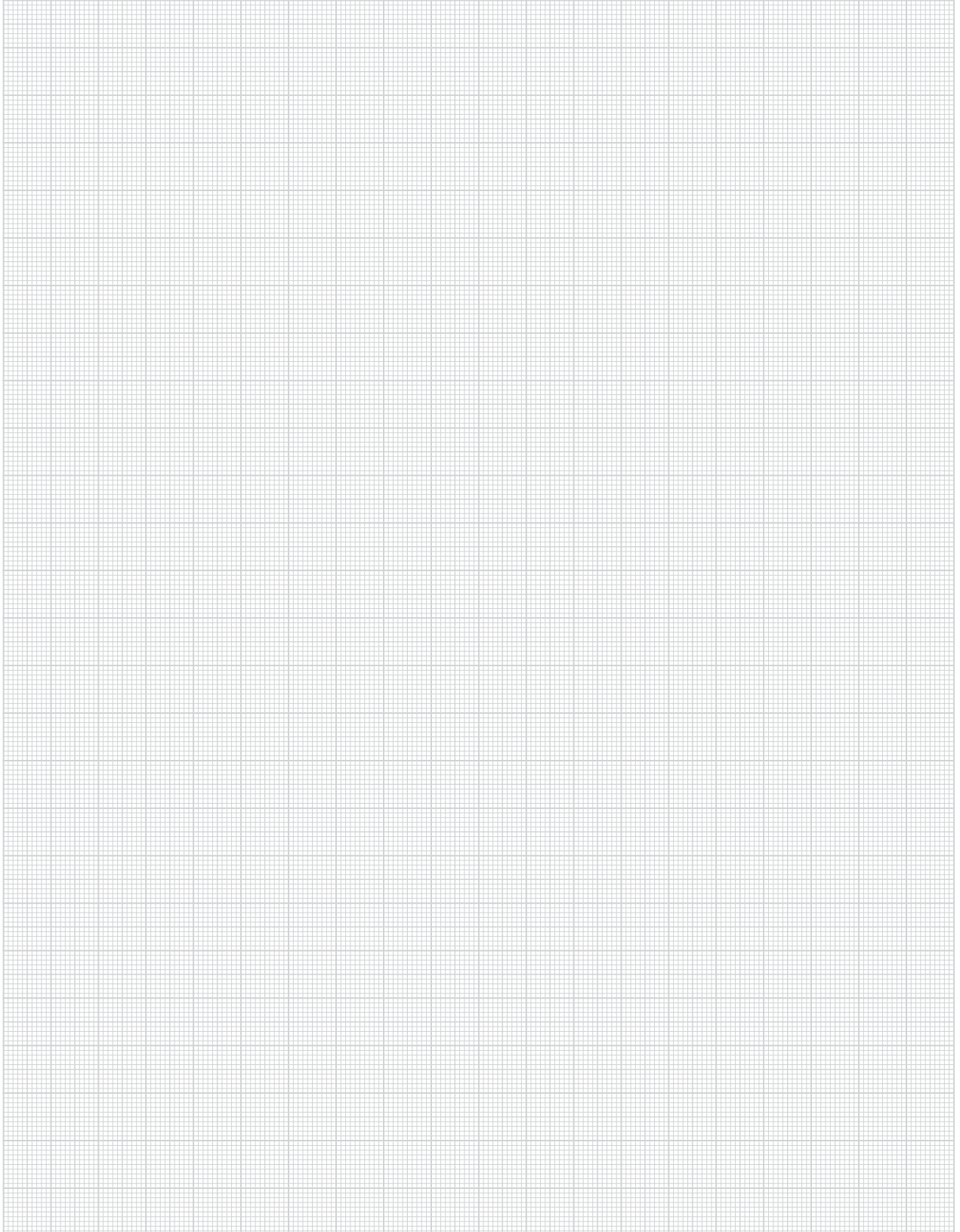
DESCRIPTION DENOMINAZIONE	ITEM POS.	PIECES PEZZI	DRAWING DISEGNO	DIMENSIONS mm			WEIGHT Kg	
				L	W	H	UNIT	TOTAL
HC5 2,1 m	16	-		2,950	2,270	2,270	1720	-
TOWER ELEMENT ELEMENTO DI TORRE ELÈMENT DE MATURE ELEMENTO DE TORRE башенный элемент	17	-		5,900	2,270	2,270	2700	-
	18	-		11.800	2,270	2,270	5360	-
BASE ELEMENT / ELEMENTO DI BASE / MAT DE BASE / ELEMENTO DE BASE / элемент основания	19	1		3,000	2,475	2,475	1925	-
CLIMBING CAGE / GABBIA DI MONTAGGIO / CAGE DE MONTAGE / JAULA DE MONTAJE / МОНТАЖНАЯ КЛЕТЬ	20	1		8,530	3,100	2,300	7670	-
EXPENDABLE FOUNDATION ELEMENT / TRONCHETTO DI FONDAZIONE / ELÈMENT A SCELLER / TRONCO DE FUNDACIÓN / СТВОЛ ОСНОВАНИЯ	21	1		1,345	2,400	2,400	820	-
OBLIQUAL LEGS / PUNTONI DI BASE / JAMBES DE FORCE / CABRIOS DE BASE / СТОЙКИ ОСНОВАНИЯ	22	4		3,640	0,220	0,300	288	1152
BASE MAIN BEAM / TRAVE PRINCIPALE CROCIERA DI BASE / POUTRE DE CHASSIS DE BASE / VIGA PRINCIPAL DE LA CRUCETA DE BASE / главная балка крестовины основания	23	1		8,890	0,620	0,720	1575	-
HALF BASE BEAM / SEMITRAVE DI BASE / SEMIPOUTRE DE CHASSIS DE BASE / MEDIA VIGA DE LA CRUCETA DE BASE / полубалка крестовины основания	24	2		4,340	0,600	0,720	700	1400
DRIVEN BOGIE / BILANCINO TRASLAZIONE MOTORIZZATO / BOGGIE MOTORISÉE / BALANCÍN DE TRASLACIÓN MOTORIZADO / приводной баланси́р горизонтального перемещения	25	4		1,427	0,492	0,540	765	3060
CLIMBING CAGE CONNECTION FRAME / TELAIO DI RACCORDO A SPINTA / ELÈMENT DE TELESCOPAGE / BASTIDOR DE ENLACE DE EMPUJE / соединительная рама подъемной клетки	26	1		2,296	2,296	1,500	1190	-

EXTERNAL CLIMBING

SOPRALZO IDRAULICO / TELESOPABLE / ELEVACIÓN HIDRÁULICA / ГИДРАВЛИЧЕСКОЕ НАРАЦИВАНИЕ



NOTE



[MRT 223 _REV. _0413] ADL / TECHNICAL DEPARTEMENT

THE DATA OBJECT OF THESE SHEETS ARE SUBJECT TO CHANGE WITHOUT PRIOR NOTICE / I DATI OGGETTO DELLE PRESENTI SCHEDE POTREBBERO SUBIRE MODIFICHE SENZA PREAVVISO / LES INFORMATIONS DONNÉES DANS LES PRÉSENTES FICHES POURRAIENT SUBIR DES MODIFICATIONS SANS PRÉAVIS / LOS DATOS CONTENIDOS EN ESTE FORMULARIO ESTÁN SUJETAS A CAMBIOS SIN PREVIO AVISO / ДАННЫЕ, УКАЗАННЫЕ В НАСТОЯЩИХ СПЕЦИФИКАЦИЯХ, МОГУТ ИЗМЕНЯТЬСЯ БЕЗ ПРЕДВАРИТЕЛЬНОГО ПРЕДУПРЕЖДЕНИЯ.