

REVOLUTION 84RM



25' LENGTH BUMPER TO BUMPER

84' TIP HEIGHT



4000 LB PAYLOAD CAPACITY

▶ Rear-Mounted Crane with the Longest Boom Available Mounted on a **Non CDL** Truck
Front-Mounted Crane available upon request



smileyliftingsolutions.com

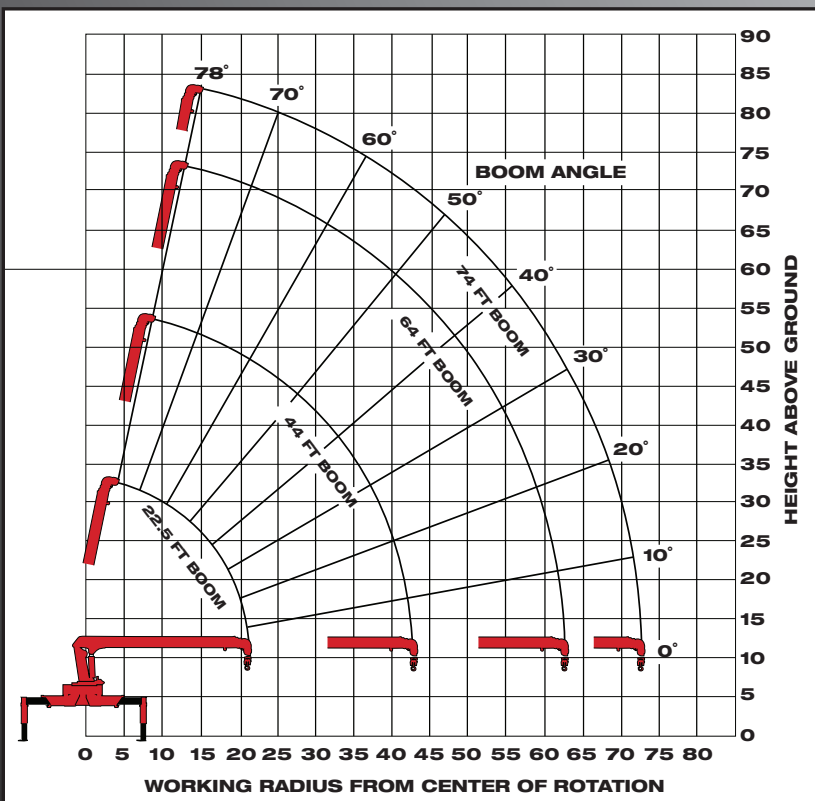
800.452.5011
NATIONWIDE RENTALS | SALES | SERVICE
FINANCING AVAILABLE

Length of Unit	25 ft (Bumper to Bumper)
Capacity	10,000 lbs @ 7 ft
Payload Capacity	4,000 lbs
Retracted Length	22.5 ft
Tip Height	84 ft
Outriggers	4 (Out & Down)
Boom	4 Section, 6-Sided Hexagonal Boom
Overload System	Overload Protection System with Safety Shutdown
Hydraulic Controls	Multiple Control valve, spring centered, spool-type, with Pressure Relief Valve
Swing Design	360° Continuous Rotation
Warranty	12 Months - Parts/Labor

- ▶ Can be Mounted on Your Choice of Non CDL Truck
- ▶ Walk-through Man Stands for Easy Access to Bed
- ▶ 500 lb Lifting Capacity at 70' from Rear of the Truck
- ▶ Custom Tailored Paint to Match Your Company Colors

OPTIONS

- ▶ Wireless 4-Function Remote Control
- ▶ Work Baskets



MAXIMUM LOAD CHART

LOAD RATINGS WITH ALL OUTRIGGERS FULLY EXTENDED

WORKING RADIUS	22.5FT BOOM	44FT BOOM	64FT BOOM	74FT BOOM
FT	LBS	LBS	LBS	LBS
5	10000			
7	10000	6850		
10	7850	6550		
12	6850	5600	4600	
15	5800	4620	4170	
17	5100	4150	3700	3570
20	4350	3580	3150	3020
25		2920	2510	2380
30		2460	2070	1940
35		2100	1750	1620
40		1750	1500	1380
45			1290	1180
50			1120	1020
55			960	880
60			780	750
65				640
70				500
72.5				360



LIFTING SOLUTIONS

smileyliftingsolutions.com

800.452.5011

NATIONWIDE RENTALS | SALES | SERVICE
FINANCING AVAILABLE