

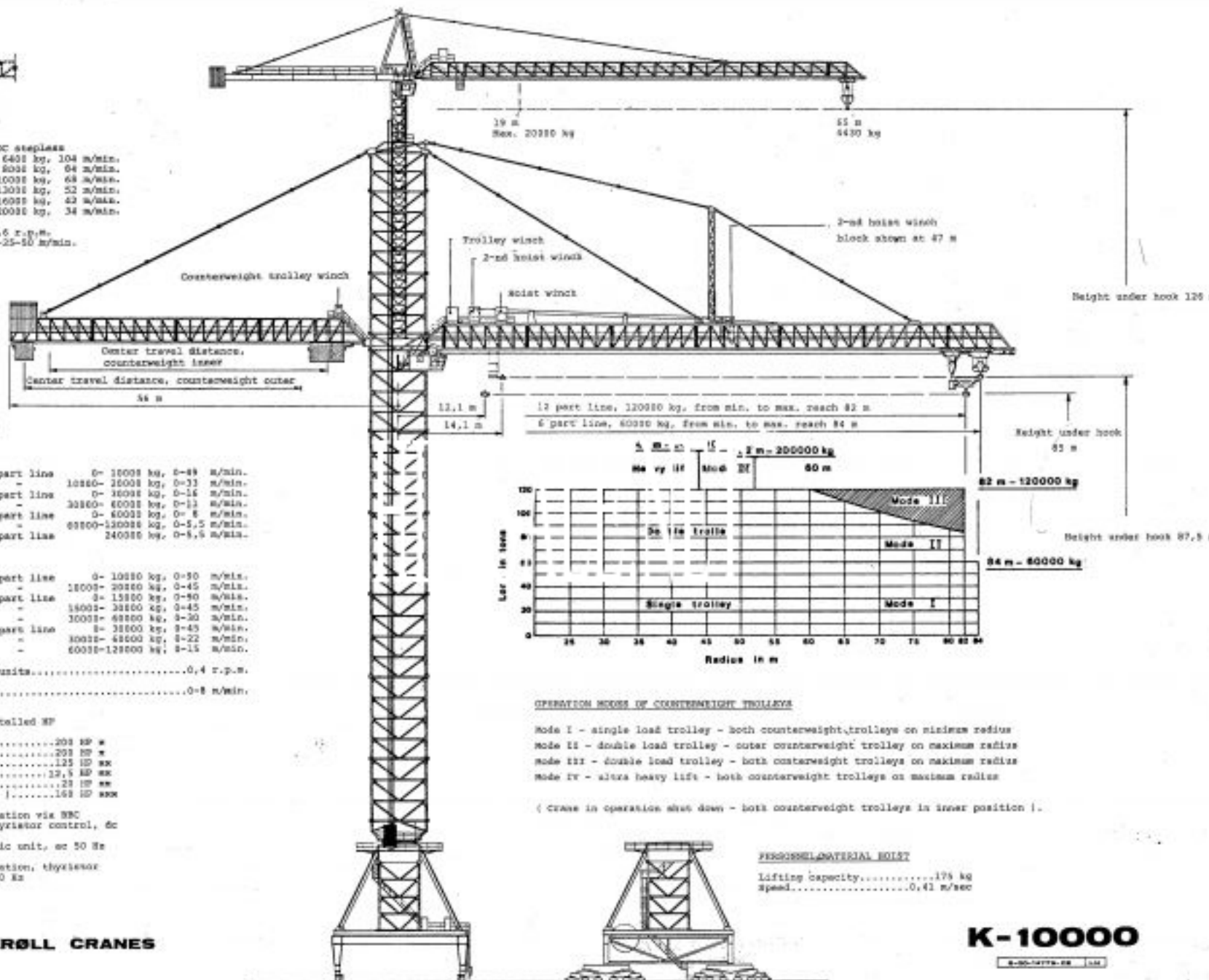
Whipline max. reach

WHIPLINE CRANE

Hoist winch 201 HP DC stepless

2 part line	0-6400 kg, 104 m/min.
-	6400-8000 kg, 94 m/min.
-	8000-10000 kg, 68 m/min.
4 part line	0-13000 kg, 52 m/min.
-	13000-16000 kg, 42 m/min.
-	16000-20000 kg, 34 m/min.

Slowing speed.....0.6 r.p.m.
Trolley speed 4-25-50 m/min.



OPERATIONAL DETAILS

HOIST WINCHES

Single trolley : 2 part line	0-10000 kg, 0-49 m/min.	
-	10000-16000 kg, 0-33 m/min.	
-	6 part line	0-30000 kg, 0-14 m/min.
-	30000-60000 kg, 0-11 m/min.	
Double trolley : 12 part line	0-60000 kg, 0-8 m/min.	
-	60000-120000 kg, 0-5.5 m/min.	
Heavy lift : 24 part line	240000 kg, 0-4.5 m/min.	

TROLLEY WINCH

-	2 part line	0-10000 kg, 0-50 m/min.
-	-	10000-20000 kg, 0-45 m/min.
-	6 part line	0-15000 kg, 0-50 m/min.
-	-	15000-30000 kg, 0-45 m/min.
-	-	30000-60000 kg, 0-30 m/min.
-	12 part line	0-30000 kg, 0-45 m/min.
-	-	30000-60000 kg, 0-22 m/min.
-	-	60000-120000 kg, 0-15 m/min.

Slowing speed : 4 units.....0.4 r.p.m.

Travel speed :0-8 m/min.

MACHINERY total installed HP

Hoist winch 1.....	201 HP *
Hoist winch 2.....	201 HP *
Slowing.....	125 HP **
Trolley winch.....	12.5 HP **
C/W. trolley winch.....	23 HP **
Travel (10 HP x 16).....	160 HP ***

* - stepless operation via NBC "Vectron" thyristor control, dc

** - el. hydrostatic unit, ac 50 Hz

*** - stepless operation, thyristor control, ac 50 Hz

OPERATION MODES OF COUNTERWEIGHT TROLLEYS

- Mode I - single load trolley - both counterweight trolleys on minimum radius
- Mode II - double load trolley - outer counterweight trolley on maximum radius
- Mode III - double load trolley - both counterweight trolleys on maximum radius
- Mode IV - ultra heavy lift - both counterweight trolleys on maximum radius

(Crane in operation shut down - both counterweight trolleys in inner position).

FERROSIL/MATERIAL HOIST

Lifting capacity.....175 kg
Speed.....0.42 m/sec



KRÖLL CRANES

K-10000

0-00-1079-08 (14)