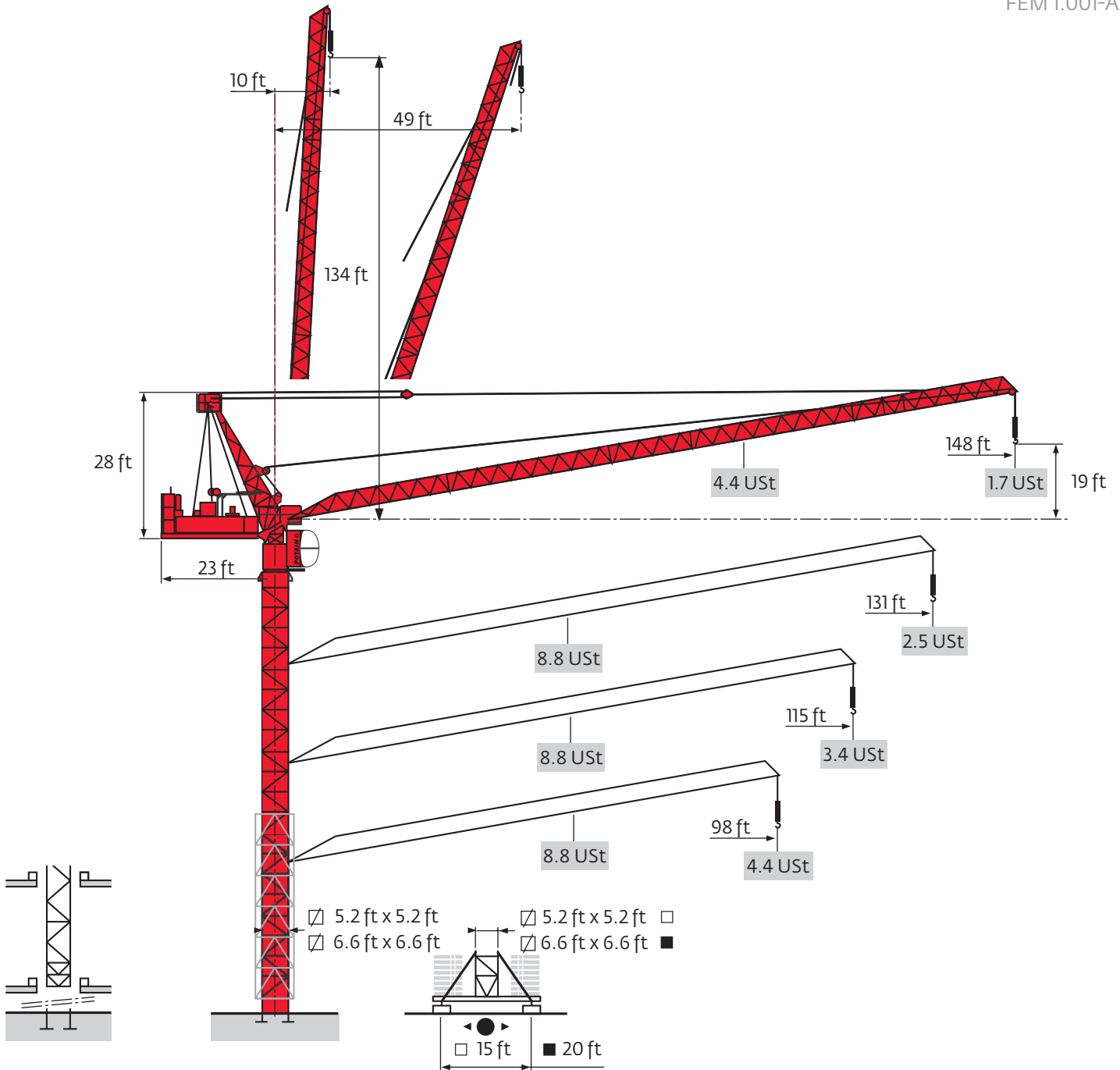


# Potain MR 90 C

## Data Sheet

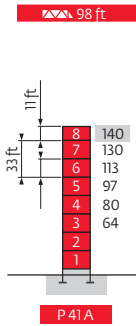
FEM 1.001-A3



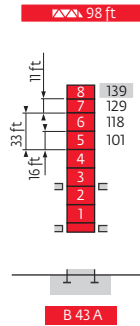
Values have been rounded

# Masts

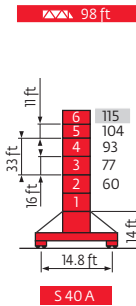
Climbing  $\square$  5.2 ft



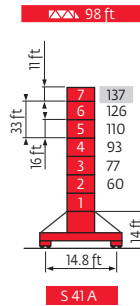
▲▲	H (ft)	16 ft	11 ft
115 ft	130	7	-
131 ft	119	5	2
148 ft	113	6	-



▲▲	H (ft)	16 ft	11 ft
115 ft	129	6	1
131 ft	0	-	-
148 ft	0	-	-

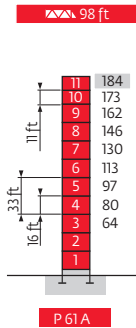


▲▲	H (ft)	16 ft	11 ft
115 ft	104	4	1
131 ft	93	4	-
148 ft	82	2	2

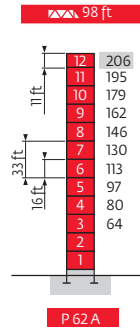


▲▲	H (ft)	16 ft	11 ft
115 ft	126	6	-
131 ft	115	4	2
148 ft	110	5	-

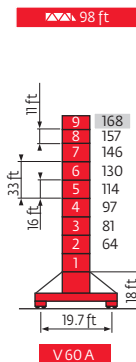
Climbing  $\square$  6.6 ft



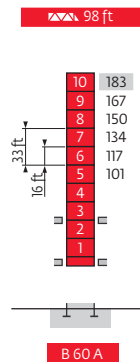
▲▲	H (ft)	16 ft	11 ft
115 ft	179	10	-
131 ft	173	9	1
148 ft	168	8	2



▲▲	H (ft)	16 ft	11 ft
115 ft	195	11	-
131 ft	190	10	1
148 ft	184	9	2

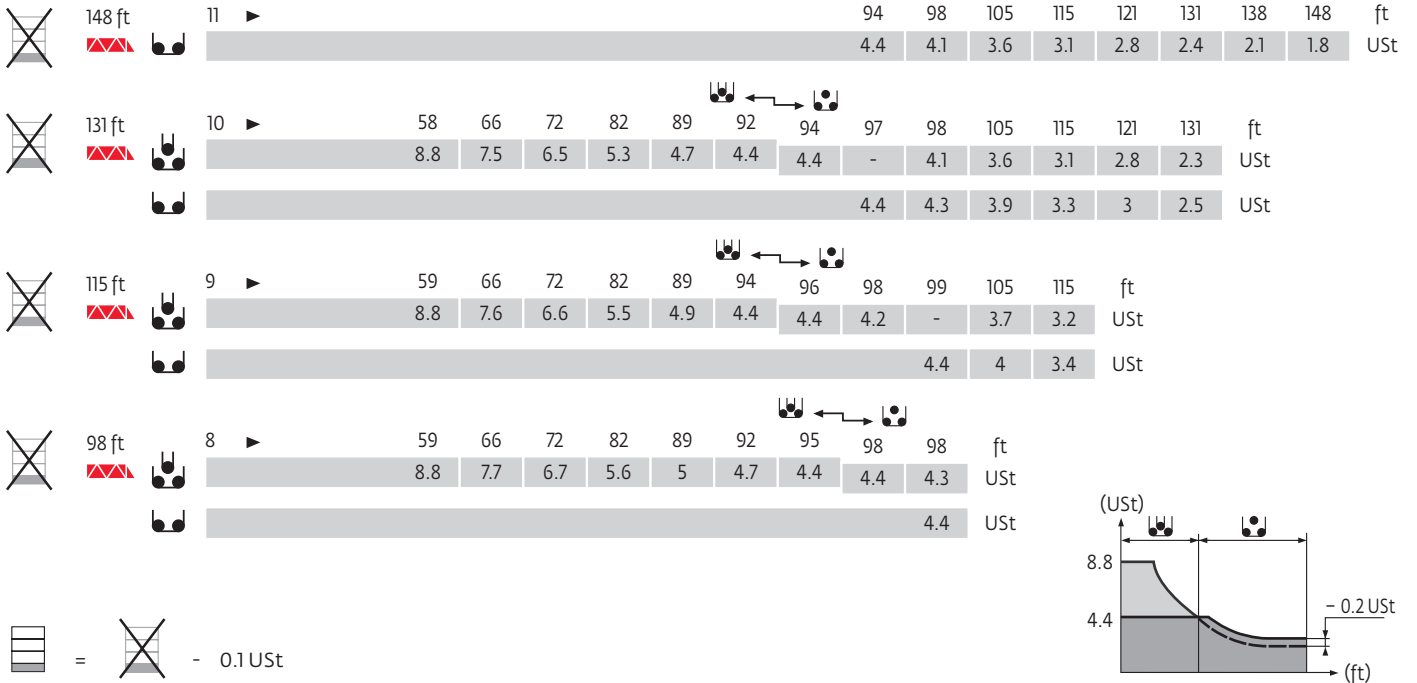


▲▲	H (ft)	16 ft	11 ft
115 ft	157	7	1
131 ft	146	7	-
148 ft	141	6	1

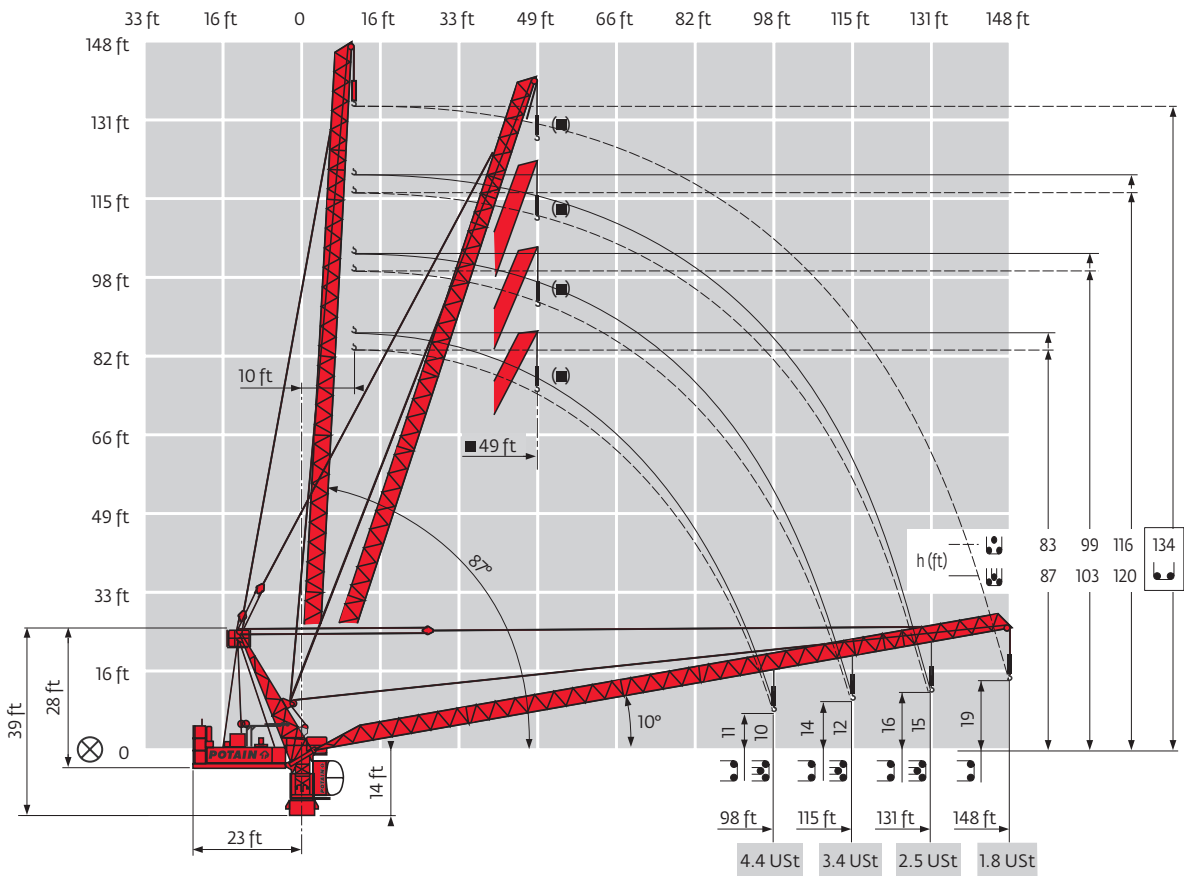


▲▲	H (ft)	16 ft	11 ft
115 ft	178	9	1
131 ft	177	8	2
148 ft	167	9	-

# Load charts



# Luffing jib



# Mechanisms

MR 90 C - 50 Hz													hp	kW			
	33 LVF 20 Optima	fpm	7	28	85	112	164	210	4	14	43	56	82	105	30	22	1539 ft
		USt	4.4	4.4	4.4	3.3	2.2	1.1	8.8	8.8	8.8	6.6	4.4	2.2			
	50 LVF 20 Optima	fpm	12	47	144	190	269	354	6	24	72	95	135	177	50	37	2287 ft
		USt	4.4	4.4	4.4	3.3	2.2	1.1	8.8	8.8	8.8	6.6	4.4	2.2			
	50 VVF 20	fpm	1 min 25 s											50	37		
	RVF 152 Optima +	rpm	0 - 0.8											2 x 5.5	2 x 4		
	RT 443 AI - 2V	fpm	49 - 98											4 x 5	4 x 3.7		
	RT 544 AI - 2V	fpm	44 - 89											4 x 7	4 x 5.2		

CEI 38	IEC 38	kVA
400 V (+6% -10%)		33 LVF : 95 kVA 50 LVF : 112 kVA

MR 90 C - 60 Hz													hp	kW			
	33 LVF 20 Optima	fpm	7	28	85	112	164	210	4	14	43	56	82	105	30	22	1539 ft
		USt	4.4	4.4	4.4	3.3	2.2	1.1	8.8	8.8	8.8	6.6	4.4	2.2			
	50 LVF 20 Optima	fpm	12	47	144	190	269	354	6	24	72	95	135	177	50	37	2287 ft
		USt	4.4	4.4	4.4	3.3	2.2	1.1	8.8	8.8	8.8	6.6	4.4	2.2			
	50 VVF 20	fpm	1 min 25 s											50	37		
	RVF 152 Optima +	rpm	0 - 0.8											2 x 5.5	2 x 4		
	RT 443 AI - 2V	fpm	59 - 118											4 x 6	4 x 4.4		
	RT 544 AI - 2V	fpm	52 - 105											4 x 8.4	4 x 6.2		

CEI 38	IEC 38	kVA
480 V (+6% -10%)		33 LVF : 95 kVA 50 LVF : 112 kVA

- Hoisting
- Trolleying
- Slewing
- Traveling

Constant improvement and engineering progress make it necessary that we reserve the right to make specification, equipment and price changes without notice. Illustrations shown may include optional equipment and accessories, and may not include all standard equipment.

## Regional Headquarters

### Americas

Manitowoc, Wisconsin, USA  
 Tel: +1 920 684 6621  
 Fax: +1 920 683 6277

Shady Grove, Pennsylvania, USA  
 Tel: +1 717 597 8121  
 Fax: +1 717 597 4062

### Europe, Middle East, Africa

Ecully, France  
 Tel: +33 472 18 2020  
 Fax: +33 472 18 2000

### Asia - Pacific

Shanghai, China  
 Tel: +86 21 6457 0066  
 Fax: +86 21 6457 4955



www.manitowoc.com

Potain MR 90 C  
 Code 09-005-.5M-0609