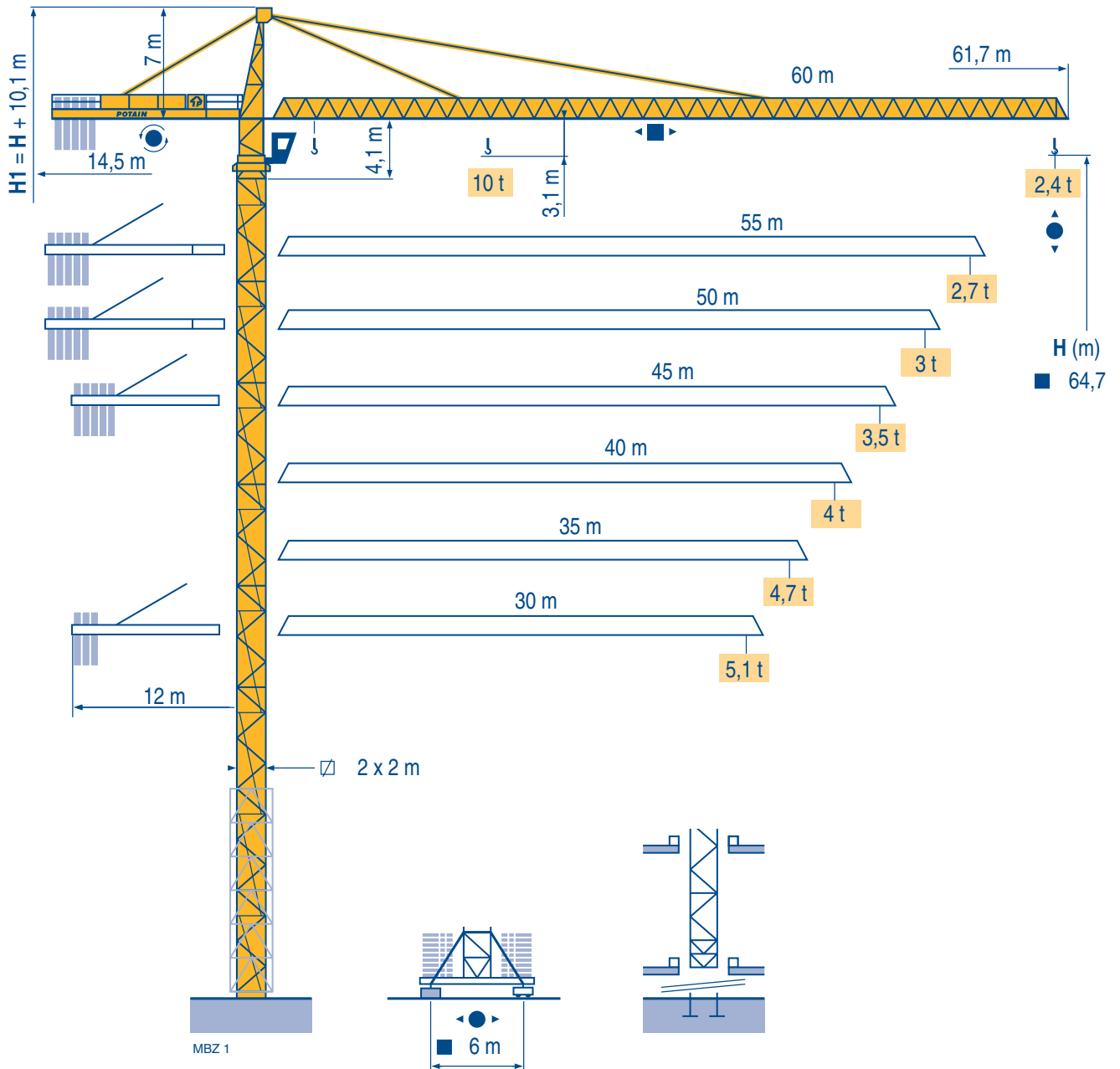


MC 205 B



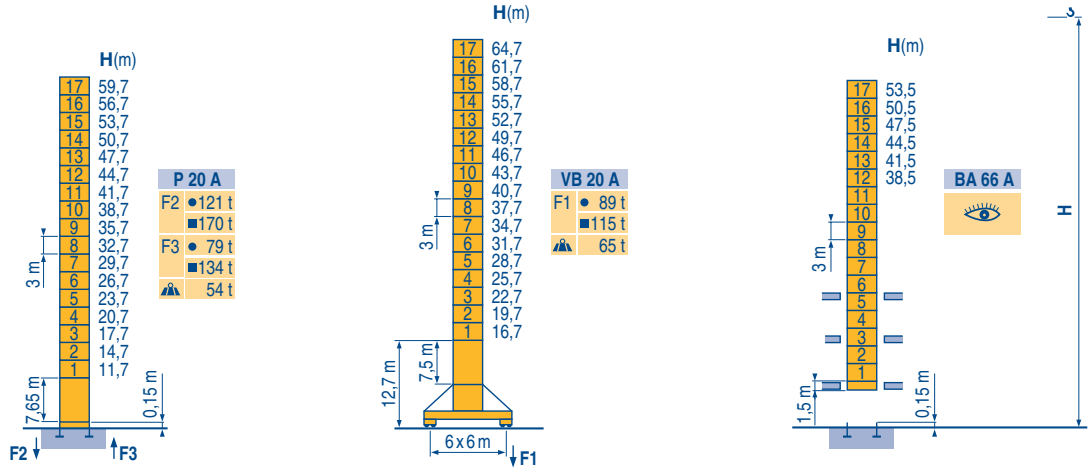
CITY CRANE

  FEM 1.001-A3

Masts / Reactions

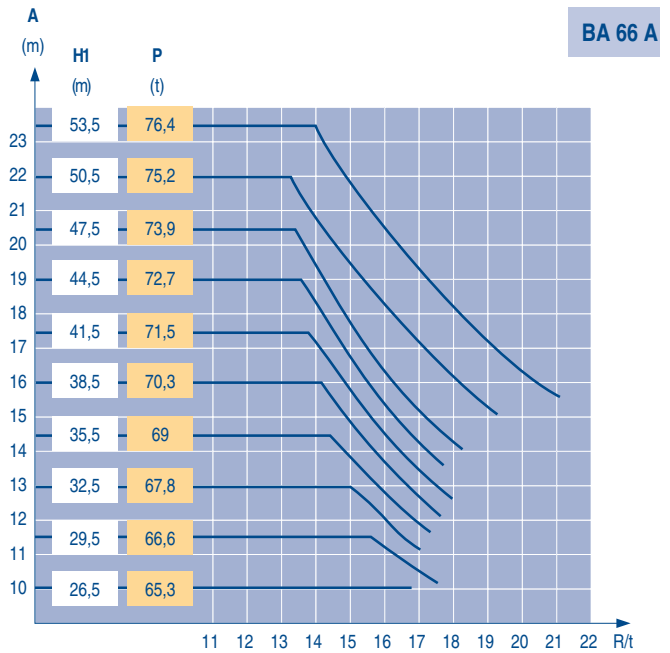
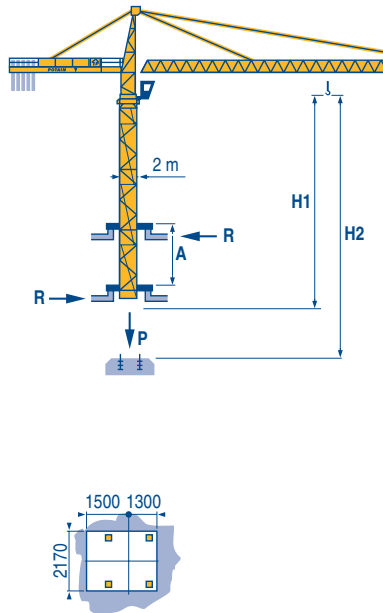
□ 2 m
 ▨ 30 m ⇒ 60 m

MBZ 1



Climbing crane

MBZ 1



CITY CRANE
MC 205 B

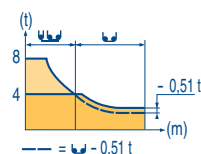
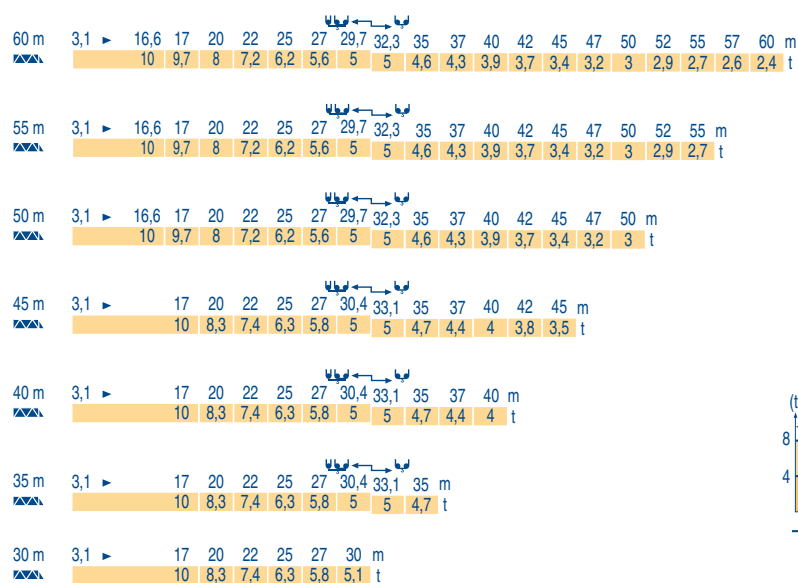


GB

- Reactions in service
- Reactions out of service
- 👤 Without load, ballast (or transport axles), with maximum jib and maximum height.
- 👁 See climbing crane

Load diagrams

MBZ 1



Counter-jib ballast

MBZ 1

Height (m)	Jib length (m)	4800 kg - 4200 kg
		3400 kg
60 m	14,5 m	18 600
55 m	14,5 m	15 800
50 m	14,5 m	14 400
45 m	12 m	17 200
40 m	12 m	14 400
35 m	12 m	13 000
30 m	12 m	11 000

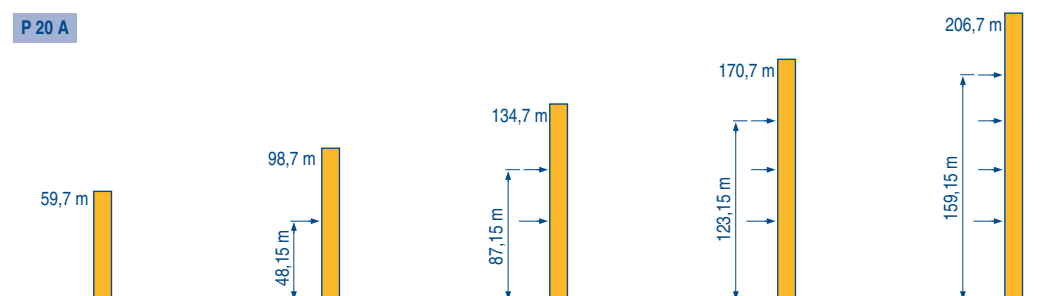
Base ballast

MBZ 1

Height (m)	Base width (m)	Ballast weight (kg)																		
		108	96	84	72	60	48	36	24	24	24	24	24	24	24	24	24	24	24	24
64,7	2 m	4800	4200	3400	2800	2200	1600	1000	400	0	0	0	0	0	0	0	0	0	0	0

Anchorage

MBZ 1



CITY CRANE MC 205 B










POTAIN

GB

- A** Distance between collars
- H1** Crane height
- P** Crane weight (in service)
- R** Horizontal reaction

Mechanisms

MBZ 1

						hp	kW		
	55 RCS 25	m/min	0 → 40	0 → 80	0 → 20	0 → 40	55	40,5	557 m
		t	5	2,5	10	5			
	5 D3 V4	m/min	15 - 30 - 58				5	3,7	
	RCV 145	rpm	0 → 0,8				2 x 6	2 x 4,4	
	VB 20 A RT 544 A1 2V R ≥ 13 m	m/min	13,5 → 27				4 x 7	4 x 5,2	
CEI 38  IEC 38		kVA							
400 V (+6% -10%) 50 Hz		55 RCS : 75kVA		2000/14					

GB



Hoisting



Trolleying



Slewing



Travelling



In compliance with the EEC Instructions on noise level



This commercial document is not legally binding.
For any technical information, please refer to the corresponding instructions.

Manitowoc
Crane CARE

Manitowoc
Crane Group



Americas

Tel: +1 920 683 6322
Tel: +1 717 597 8121

Europe - Middle East - Africa

Tel : +(33) 4 72 81 50 00
Tel : +(44) 191 565 6281

Asia - Pacific

Tel: +(65) 6861 7133
Fax: +(65) 6862 4142

www.manitowoccrane.com

Manitowoc Crane Group Asia Pte Ltd
Manitowoc Crane Group
26 Benoi Road
Singapore 629898

Tel: 65-6861 7133
Fax: (Admin/ Sales) : 65-6862 4040
Fax: (Service/ Parts) : 65-6862 4142
www.manitowoccrane.com

CITY CRANE MC 205 B

Réf. 2004 45 MBZ 1

Copyright.Reproduction interdite © POTAIN 2004

Réalisation Sedoc