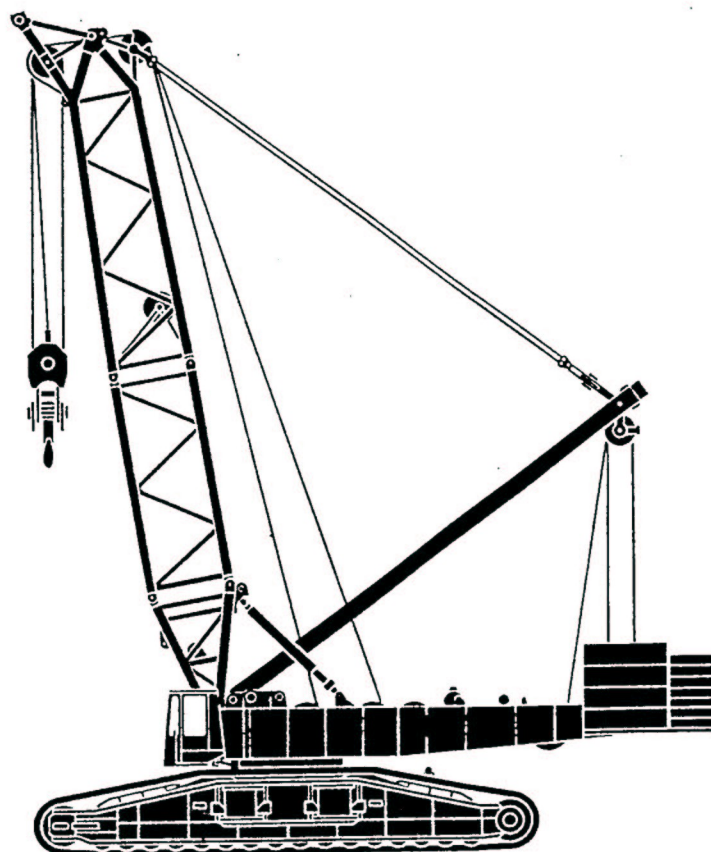


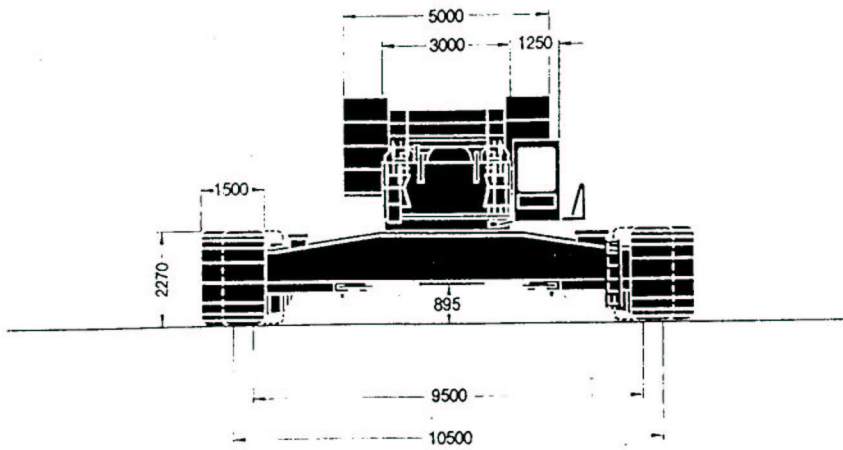
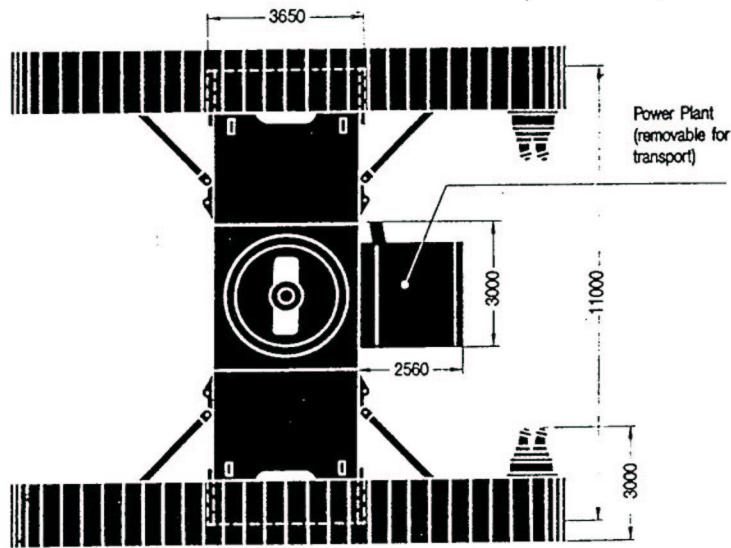
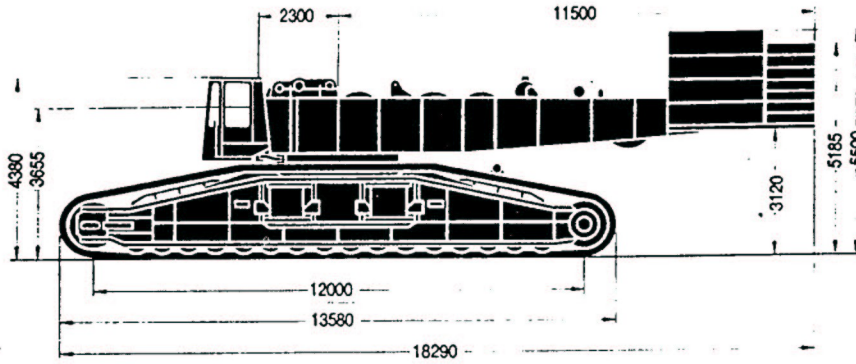
---

# DEMAG CC4000

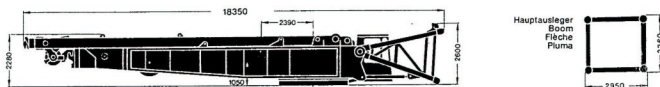


# Dimensions

# DEMAG CC4000



Weight of Counterweighted Machine with 18 m Boom	425 t
Superstructure (with 4 drums, foot section of boom and mast gantry)	77,8 t
Carbody	51,5 t
Crawler Side-Frames	2 x 72,3 t
Counterweight	140 t
Ground Pressure (based on a total weight of 425 t)	(1,18 kp/cm <sup>2</sup> ) 11,8 N/m <sup>2</sup>



1230 x 5000 x 730  
4,83 t

1200 x 5000 x 315  
2 x 9,1 t = 18,2 t



1110 x 2200 x 600  
4 x 8,7 t = 34,8 t



1235 x 2200 x 600  
2,3 t



1200 x 5000 x 285  
3 x 8,8 t = 26,4 t



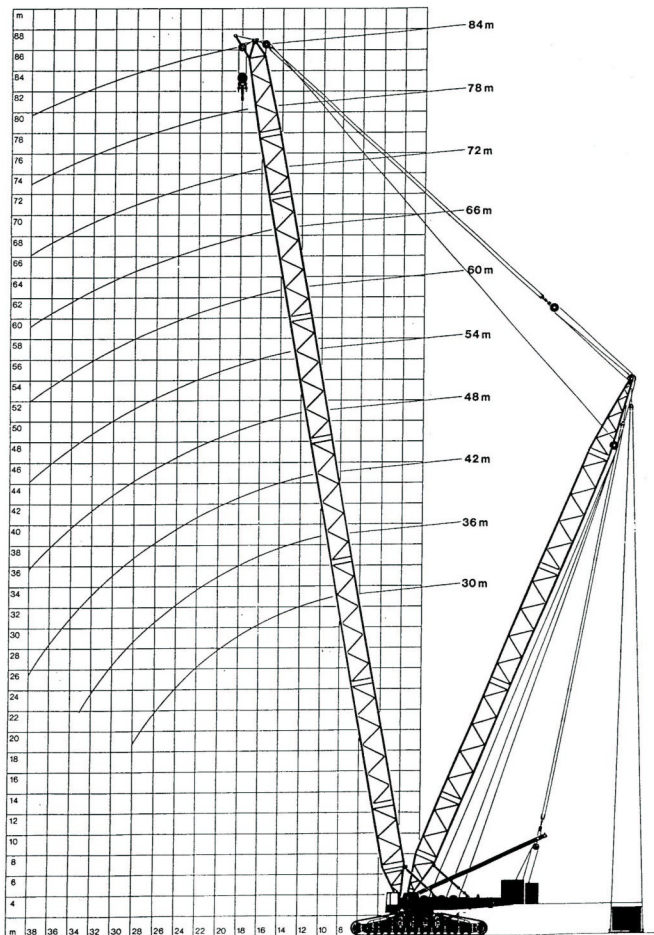
1200 x 5000 x 345  
2 x 8,7 t = 17,4 t



1235 x 2200 x 600  
2,3 t



1110 x 2200 x 600  
4 x 8,7 t = 34,8 t



# Superlift Capacities


# DEMAG CC4000

10.5-m Track, 140-t Counterweight

75% (360°)

Main Boom	Mast Length	Radius	Superlift Counterweight (t)						
			0	50	100	150	200	250	
			t	t	t	t	t	t	
with Heavy-Duty Hammer Head	30	Mast	8.5	*430	*500	*565	*635	*700	*800
			9	*422	*477	*528	*582	*630	*720
			10	*416	*478	*532	*587	*630	*720
		12	*305	*350	*404	*452	*495	*585	
		14	*262	*307	*352	*400	*445	*535	
		16	*219	*253	*300	*347	*392	*482	
	Radius	18	*174	*220	*261	*302	*340	*430	
		20	*159	*205	*241	*282	*319	*409	
		22	*149	*197	*238	*274	*314	*404	
		24	*139	*188	*228	*264	*304	*394	
		26	*110	*148	*188	*224	*264	*354	
		28	*81	*130	*172	*208	*248	*338	
with Universal-Head	30	Mast	10	*376	*459	*544	*630	*700	*800
			12	*366	*459	*544	*630	*700	*800
			14	*352	*450	*535	*620	*700	*800
		16	*249	*300	*345	*392	*435	*525	
		18	*199	*250	*295	*342	*385	*475	
		20	*153	*200	*245	*292	*335	*425	
	Radius	22	*119	*170	*215	*262	*305	*395	
		24	*109	*160	*205	*252	*295	*385	
		26	*105	*148	*193	*240	*283	*373	
		28	*83	*130	*172	*218	*261	*351	
		30	*60	*118	*157	*203	*246	*336	
		32	*49	*107	*146	*192	*235	*325	
with Universal-Head	42	Mast	10	*357	*479	*600	*720	*800	*900
			12	*347	*479	*600	*720	*800	*900
			14	*322	*459	*580	*700	*800	*900
		16	*222	*307	*382	*457	*532	*622	
		18	*171	*257	*332	*407	*482	*572	
		20	*126	*192	*267	*342	*417	*507	
	Radius	22	*107	*173	*248	*323	*398	*488	
		24	*112	*157	*232	*307	*382	*472	
		26	*100	*141	*216	*291	*366	*456	
		28	*90	*129	*196	*271	*346	*436	
		30	*81	*118	*185	*260	*335	*425	
		32	*68	*98	*165	*240	*315	*405	
with Universal-Head	54	Mast	10	*287	*459	*600	*780	*900	*1000
			12	*277	*459	*600	*780	*900	*1000
			14	*249	*429	*570	*750	*870	*970
		16	*185	*319	*430	*570	*710	*810	
		18	*149	*260	*371	*511	*651	*751	
		20	*107	*174	*285	*425	*565	*665	
	Radius	22	*112	*156	*267	*407	*547	*647	
		24	*100	*141	*252	*392	*532	*632	
		26	*99	*130	*248	*388	*528	*628	
		28	*89	*118	*236	*376	*516	*616	
		30	*87	*100	*226	*366	*506	*606	
		32	*74	*89	*216	*356	*496	*596	
with Universal-Head	66	Mast	10	*210	*376	*542	*708	*800	*900
			12	*185	*359	*525	*691	*780	*880
			14	*145	*319	*480	*646	*735	*835
		16	*126	*271	*430	*596	*685	*785	
		18	*110	*254	*413	*579	*668	*768	
		20	*98	*241	*402	*568	*657	*757	
	Radius	22	*87	*216	*356	*522	*611	*711	
		24	*80	*199	*347	*513	*602	*702	
		26	*79	*187	*337	*503	*592	*692	
		28	*68	*174	*326	*493	*582	*682	
		30	*65	*162	*316	*483	*572	*672	
		32	*55	*151	*306	*473	*562	*662	
with Universal-Head	72	Mast	10	*188	*345	*511	*677	*780	*900
			12	*177	*328	*494	*660	*765	*885
			14	*160	*319	*480	*643	*748	*868
		16	*129	*271	*430	*599	*704	*824	
		18	*113	*254	*413	*582	*687	*807	
		20	*100	*240	*402	*572	*677	*797	
	Radius	22	*99	*228	*388	*554	*669	*789	
		24	*99	*218	*377	*544	*659	*779	
		26	*80	*201	*364	*534	*649	*769	
		28	*66	*188	*354	*524	*639	*759	
		30	*56	*178	*344	*514	*629	*749	
		32	*47	*168	*334	*504	*619	*739	
with Universal-Head	78	Mast	10	*156	*300	*466	*632	*735	*855
			12	*148	*319	*480	*646	*748	*868
			14	*140	*319	*480	*646	*748	*868
		16	*113	*271	*430	*596	*700	*820	
		18	*100	*254	*413	*582	*687	*807	
		20	*90	*240	*402	*572	*677	*797	
	Radius	22	*89	*228	*388	*554	*669	*789	
		24	*88	*218	*377	*544	*659	*779	
		26	*80	*201	*364	*534	*649	*769	
		28	*67	*188	*354	*524	*639	*759	
		30	*57	*178	*344	*514	*629	*749	
		32	*48	*168	*334	*504	*619	*739	
with Universal-Head	84	Mast	10	*131	*271	*430	*596	*700	*820
			12	*124	*290	*457	*623	*727	*847
			14	*113	*271	*430	*596	*700	*820
		16	*100	*254	*413	*582	*687	*807	
		18	*90	*240	*402	*572	*677	*797	
		20	*80	*228	*392	*562	*667	*787	
	Radius	22	*79	*218	*377	*544	*659	*779	
		24	*79	*208	*367	*534	*649	*769	
		26	*65	*201	*356	*524	*639	*759	
		28	*56	*188	*346	*514	*629	*749	
		30	*46	*178	*336	*504	*619	*739	
		32	*37	*168	*326	*494	*609	*729	

\* With 2 hook-blocks (lifting beam optional)

 10.5-m Track, 140-t Counterweight

75% (360°)

Radius m	Length of Main Boom															
	18 m	24 m	30 m	36 m	42 m	48 m	54 m	60 m	66 m	72 m	78 m	84 m	90 m	96 m	102 m	
6	650**	-	-	-	-	-	-	-	-	-	-	-	-	-	-	
7	570**	500*	-	-	-	-	-	-	-	-	-	-	-	-	-	
8	500*	460*	440*	-	-	-	-	-	-	-	-	-	-	-	-	
9	430*	425*	420*	420*	419*	-	-	-	-	-	-	-	-	-	-	
10	380	375	375*	373*	371*	370*	360*	314*	-	-	-	-	-	-	-	
12	307	305	303	302*	300*	299*	298*	296*	266*	232*	200*	-	-	-	-	
14	258	256	254	253	251*	250*	248*	247*	246*	226*	199*	176*	152*	134*	110	
16	222	220	218	217	215	214*	212*	211*	210*	208*	198*	174*	151*	132*	110	
18	194	192	190	189	188	186	185*	184*	182*	181*	180*	172*	148*	130*	109	
20	-	164	163	162	160	160	159	158	157*	156*	155*	155*	145*	128*	108	
22	-	144	142	141	140	139	138	137	136	135*	134*	134*	133*	125*	106	
24	-	-	126	125	123	122	121	120	119	118	117*	117*	116*	115*	104	
26	-	-	113	112	110	109	108	107	106	105	104	103*	103*	102*	101	
28	-	-	102	101	99	98	97	96	95	94	93	92	91*	91*	90	
30	-	-	-	92	90	89	88	87	86	85	84	83	82	82	81	
34	-	-	-	-	76	75	74	72	71	70	69	69	68	67	66	
38	-	-	-	-	65	64	63	61	60	59	58	58	57	56	55	
42	-	-	-	-	-	56	54	53	52	51	50	49	48	47	46	
46	-	-	-	-	-	-	48	46	45	44	43	42	41	40	39	
50	-	-	-	-	-	-	-	41	39	38	37	36	35	34	33	
54	-	-	-	-	-	-	-	-	36	35	34	32	31	30	28	
58	-	-	-	-	-	-	-	-	-	31	30	28	27	26	24	
62	-	-	-	-	-	-	-	-	-	-	26	25	24	22	20	
66	-	-	-	-	-	-	-	-	-	-	-	22	21	19	17	
70	-	-	-	-	-	-	-	-	-	-	-	19	18	17	15	
74	-	-	-	-	-	-	-	-	-	-	-	-	16	14	13	
78	-	-	-	-	-	-	-	-	-	-	-	-	-	12	11	
82	-	-	-	-	-	-	-	-	-	-	-	-	-	-	9	

\*\* Only with heavy-duty hammer head and 2 x 400t hook-block.

\* Double hook-block required.

Main-boom capacities for 9.5-m track available on request.

Additional combinations and lifting capacities on request.



## Crane Capacity Notes

Gross capacities do not exceed 75% of tipping load and are in conformance with DIN 15019.2 (test load =  $125 \times$  lifting load +  $0.1 \times$  dead weight of boom reduced to boom point).

The weight of hook block and all other load-handling accessories is considered part of the load, and suitable allowance for them should be made.

Crane with maximum length of boom can still operate safely up to a

Wind Pressure of  $60 \text{ N/m}^2$

and a Wind Speed of  $9.8 \text{ m/s}$

Wind Surface of Load  $1 \text{ m}^2$   $\Delta$  load

All capacities above the parting lines in the charts depend on a firm level, uniformly supporting surface. Shorter boom lengths and lower capacities apply to sloping positions and travel over uneven ground.

Loads suspended from the Fly Jib are not allowed to be travelled into position, and limitations on boom length must be observed when travelling without a load over uneven ground.

Consult operation manual for further particulars and higher wind speeds.

While every care has been taken in the preparation of the ratings given in this leaflet, and all reasonable steps have been taken to check the accuracy of the information, Decalift cannot accept responsibility for any inaccuracy in respect of any matters arising out of, or in connection with the use of these tables.