



# ET12KX

# ET12K

## FEATURES

- \* 3,500 lb. Maximum Lifting Capacity
- \* 12,000 ft.-lb. Moment Rating
- \* Electric-Hydraulic Power
- \* Manual or Hydraulic Boom Extension 7-11 ft.
- \* Manual Boom Extension 11-15 ft.
- \* Continuous Power Rotation
- \* Meets ANSI B30.5 Safety Standards
- \* Meets OSHA 1910.180 Requirements

## STANDARD EQUIPMENT

- \* Capacity Overload Shut-Off System
- \* Anti-Two-Blocking System
- \* 65 ft. of 1/4" Aircraft-Quality Wire Rope
- \* Remote Control Pendant: 25 ft. Cord and Quick Disconnect
- \* Snatch Block with Swivel Hook Safety Latch
- \* Master Disconnect Switch
- \* Battery Cable: 25 ft.

## MINIMUM REQUIREMENTS

- \* 8,800 lb. GVWR Chassis
- \* Outriggers
- \* Electrical Power Source: 12V DC

LIFTING CAPACITIES	
REACH (FT.)	CAPACITY (LBS.)
4	3,500
7	1,800
11	1,100
15	800

## OPTIONAL EQUIPMENT

- \* Radio Remote Controls
- \* Manual Outrigger Packages
- \* Mounting Pedestal for Platform Bodies
- \* Boom Rests
- \* Cable Overhaul Weight

Specifications subject to change without notice.



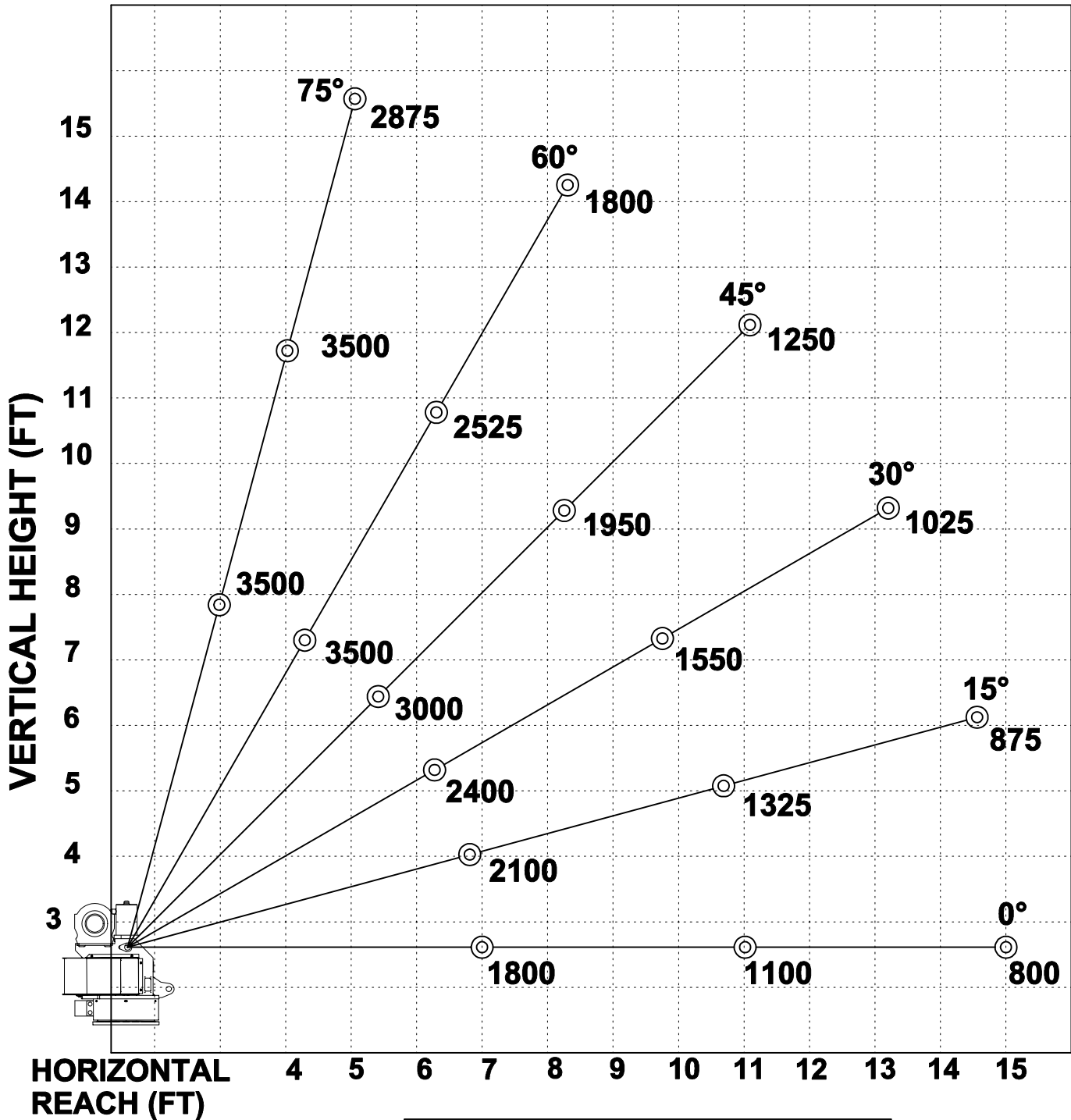
**RUGGED. RELIABLE. REAL.**

12110 Best Place Cincinnati, OH 45241  
 800-226-2238 internetsales@venturo.com  
 www.venturo.com

DISTRIBUTED BY:



# ET12K(X) MAXIMUM CAPACITY CHART



**MUST USE SNATCH BLOCK  
FOR LOADS OF 1750 LBS.  
AND GREATER**