

CR-200Ri

PREMIUM
Rougher



<http://www.kato-works.co.jp>

- Before you use the crane, study the instruction manual thoroughly and follow the instructions it contains.
- Some differences may arise between the machine delivered and the photographs in the catalog due to the country the crane will be used in or any added improvements.
Note : The specification may be changed without notice.
- The actual colors of the body and interior may appear slightly different from those shown in this catalogue due to the limitations of photography and printing.

● Contact for enquiry:

KATO KATO WORKS CO.,LTD.
QUALITY & EXPERIENCE
SINCE 1895

ISO 9001
BUREAU VERITAS
Certification

Obtained authentication of International
Specification ISO9001 for quality assurance.

CR-200Ri

9-37, Higashi-oh 1-chome, Shinagawa-ku, Tokyo, 140-0011, Japan / Tel.: Head Office: Tokyo (03) 3458-1111 Overseas Marketing Department: Tokyo (03) 3458-1115 / FAX: Tokyo (03) 3458-1163

CITYRANGE

CR-200Ri

PREMIUM
Rougher



KATO

CITYRANGE

CR-200Ri
PREMIUM
Rougher

Compact & Powerful

- GVW : less than 20t
- Maximum lifting capacity : 20t × 2.5m
- 6 sections SUPERBOOM
- 2 sections Power JIB
- ECO switch (Drive & Crane)
- Easy operation via Colorful touch panel
- New Cummins Diesel Engine (Tier 4 interim / Stage IIIB)
- New Functions of ACS for safety Improvement



Steady performance with the latest eco technology

Easy and safe JIB setting

JIB setting requires only 3 steps



▲ Drive mode

New adoption! Saving energy for driving and crane operation

- Perfect engine control makes reduction of the fuel consumption by using eco switch while driving and crane operation. Contribution to CO₂ reduction and saving energy.
- Compare to normal driving,

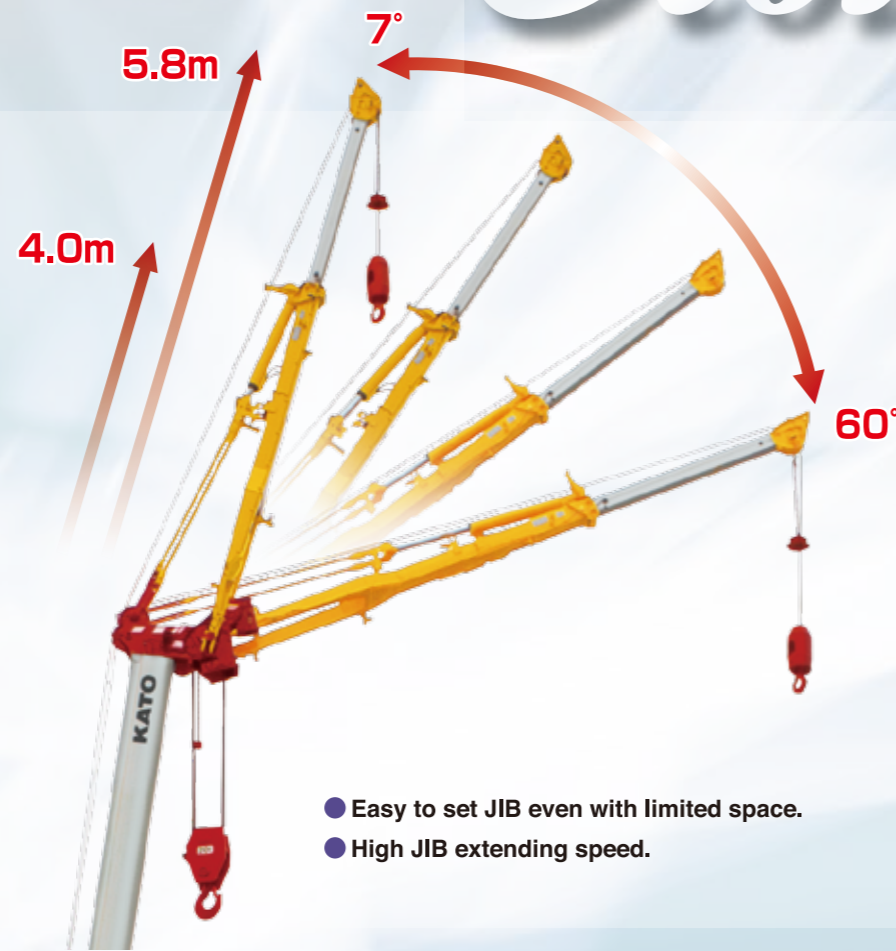
Energy saves about 10%.



▲ Crane operation mode

Ecology Intelligence

- Tail slewing radius **2.25m**
- **2.39m** on slide sheave



- Easy to set JIB even with limited space.
- High JIB extending speed.

High rigidity 6-sections SUPERBOOM with minimal flexure in vertical and horizontal axis

◆ Boom lifting capacity SUPERBOOM

- Maximum lifting capacity..... **20t×2.5m**
- Boom length..... **6.5m~28m**
- Boom derricking angle..... **-9.5°~83°**
- Maximum lifting height..... **29.1m (Boom)**

◆ Power jib lifting capacity

- Maximum lifting capacity..... **2.5t×75°**
- Jib length..... **4.0m, 5.8m**
- Jib offset angle..... **7°~60°**
- Maximum lifting height..... **34.8m (Jib)**

Increased operability with extensive intermediate extension!

- Outrigger can be operated from inside and outside the cab.



Intelligent Cabin

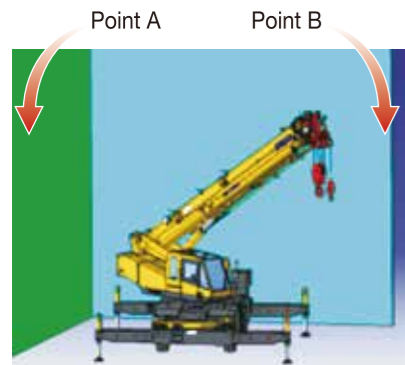
Provide wider view thanks to slanted boom

New ACS with colorful display



1. Working area limitation setting display

The working area limitation setting restricts movement into the area beyond a line specified by points A and B, which in terms of the slewing angle and working radius.



2. Limiting function of load factor

Load factor from 80% to 100% flexible setting (moment restriction)



COR information display



Good left side visibility reduces collision risk

Left front view safety camera



*photo is a composite photo with separate image inserted.

Progressive Parts



Electrically retractable side view mirrors [with defroster (option)]



Discharge head lamp



Rear view safety camera (option)

Side marker lamp (option)



Left front view safety camera



Way side lamp (option)

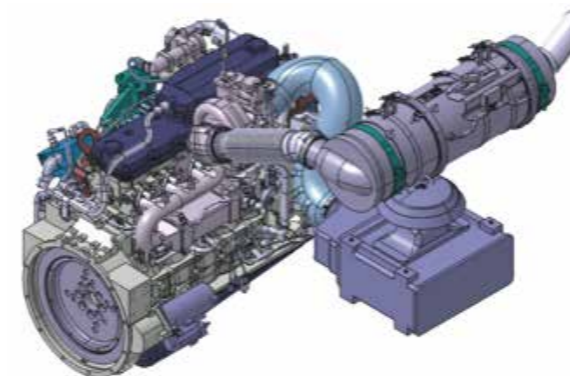
Storage box (option)



Winch view camera (option)

Engine

Tier 4 interim / Stage III B



Engine : CUMMINS QSB6.7-4A
(Electronically controlled Common-rail type)

- Piston displacement..... 6.690L
- Max Power..... 175kW / 2,300min⁻¹
- Max Torque..... 888N·m / 1,500min⁻¹