

MATERIAL HANDLING CRANES

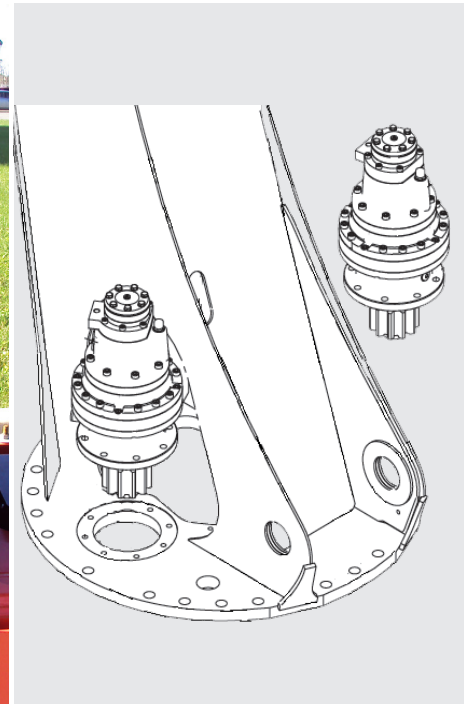


Offering the best overall Total Cost of Ownership, PALFINGER provides the most durable and service friendly wallboard cranes on the market. The tare weight of a PALFINGER wallboard cranes is unrivaled in the market, offering increases in your daily payloads. Have confidence in your fleet knowing that PALFINGER, with our vast dealer and service network, will keep you working profitably.



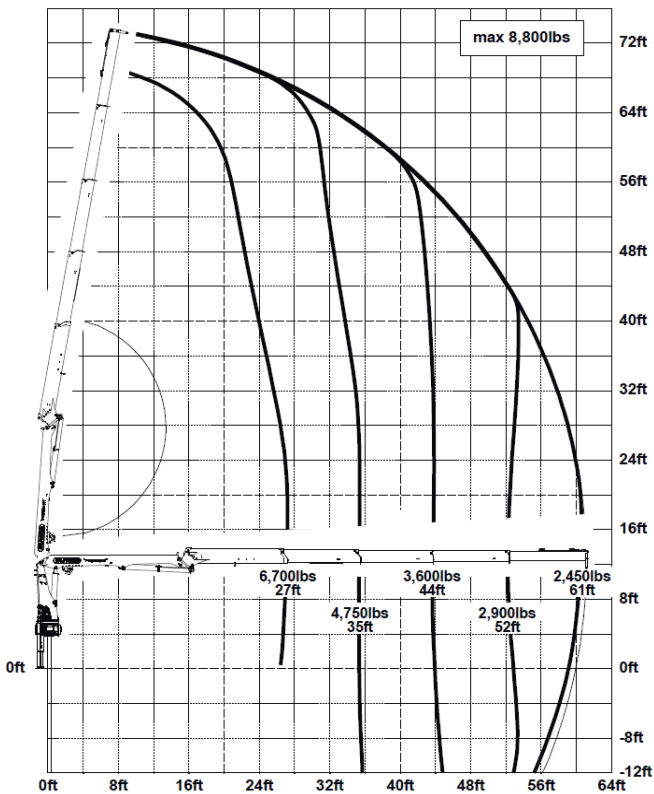
ADVANCED ROTATION SYSTEM

Proven durable rotation system from PALFINGER large cranes. The slewing system ensures maximum productivity. Industry leading slewing torque with dual drive motors ensures and extremely precise crane movements.

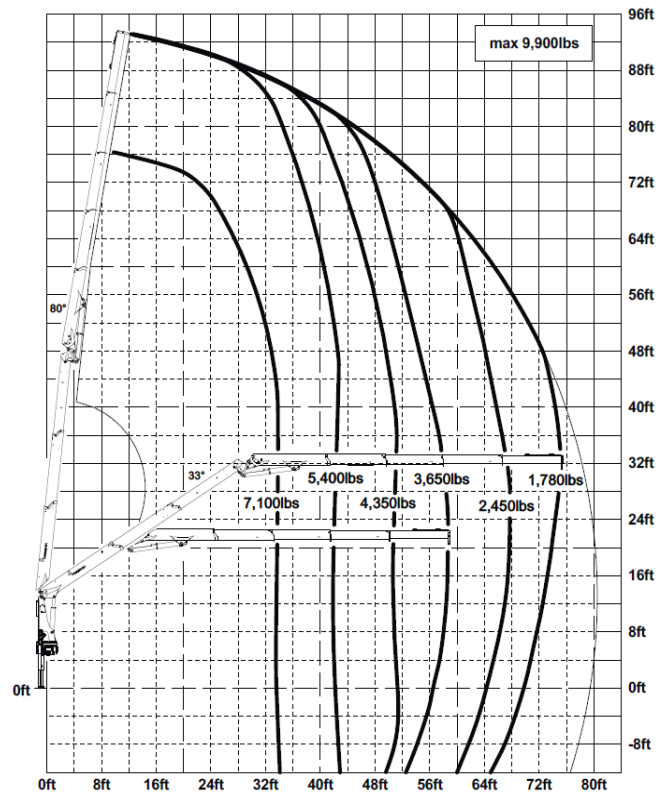


THE RIGHT SPECIFICATIONS FOR YOUR MATERIAL HANDLING NEEDS

| Model | Maximum Lifting Moment (ft.lbs) | Gross Rotation Torque (ft.lbs) | Slewing Range | Stabilizer Spread | Weight (FL, R3X, STZS3, 4) (lbs) | Maximum Horizontal Reach | Maximum Vertical Reach | Maximum Horizontal Capacity (lbs) |
|---------------|---------------------------------|--------------------------------|----------------|-------------------|----------------------------------|--------------------------|------------------------|-----------------------------------|
| PW 32001 A | 194,790 | 42,700 | 470° | 21'8" | 6,742 | 43' | 55'6" | 4,450 @ 42' |
| PW 32001 B | 174,220 | 42,700 | 470° | 21'8" | 7,716 | 52'8" | 64'8" | 2,950 @ 52' |
| PW 32001 C | 159,850 | 42,700 | 470° | 21'8" | 7,829 | 61' | 73'2" | 2,050 @ 61' |
| PW 35001-SH A | 218,170 | 42,700 | 470° | 21'8" | 6,742 | 43' | 55'6" | 5,000 @ 42' |
| PW 35001-SH B | 197,590 | 42,700 | 470° <td 21'8" | 7,716 | 52'8" | 64'8" | 3,400 @ 52' | |
| PW 35001-SH C | 183,220 | 42,700 | 470° | 21'8" | 7,829 | 61' | 73'2" | 2,450 @ 61' |
| PW 38001 B | 227,180 | 51,330 | 470° | 24'4" | 8,550 | 52'9" | 64'8" | 3,950 @ 52' |
| PW 38001 C | 231,430 | 51,330 | 470° | 24'4" | 9,240 | 61' | 73'2" | 2,900 @ 61' |
| PW 42001-SH B | 256,110 | 51,330 | 470° | 24'4" | 8,770 | 52'9" | 64'8" | 4,500 @ 52' |
| PW 42001-SH C | 241,640 | 51,330 | 470° | 24'4" | 9,480 | 61' | 73'2" | 3,350 @ 61' |
| PW 50001-SH C | 253,220 | 51,330 | 470° | 24'4" | 11,710 | 80'9" | 93' | 1,780 @ 76' |



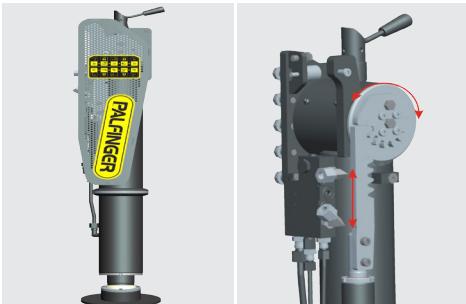
PW 35001-SH C



PW 50001-SH C

INNOVATIVE HIGHLIGHTS

* Optional features



HYDRAULIC TILTABLE STABILIZERS *

Hydraulically tiltable stabilizers are a nice feature for crane operators and installers. Cranes can be installed directly above axles, tanks and tool boxes. They allow for longer cylinder strokes with ideal ground clearances and ground penetration. Additionally, they allow a crane to be setup in restricted spaces. Obstacles like guard rails, walls or fences can be overcome.



MAINTENANCE FREE EXTENSION SYSTEM

Cranes extension system is maintenance free offering a clean working environment with reduced service time and costs.



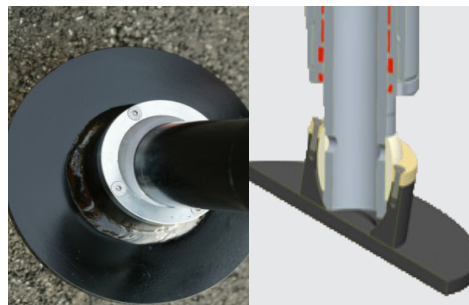
CONTROL STATION

Radio remote controlled cranes feature a superior control station with easy to use features. Service functions are easily carried out via integrated display hydraulic test ports and access panels.



STABILIZER WARNING LIGHTS

LED warning lights on the stabilizer cylinders are standard on all PW cranes. The bright orange lights offer superior visibility of the stabilizers.



TILTABLE STABILIZER PLATES

Stabilizer plates are permanently fixed to the stabilizer and feature a 14° tiltable offset to adapt to ground conditions. Stabilizer foot plates do not need to be removed for transport.



POWERLINK

The PowerLink system offers increase lifting power at awkward boom angles, constant lifting speeds and superior vertical lifting power.



TRANSPORT SWITCHES *

Factory mounted switches to indicate transport positions offers well protected mounting positions and clean appearance.

- » Boom in transport position switch. (TRAN2)
- » Outriggers and stabilizers retracted. (ABSTW)



PALTRONIC 150

PW cranes with "-SH" versions feature our PALTRONIC 150 control system. System offers Soft Stop features at end of cylinder strokes and automatic capacity increase with speed reduction at top 85% of power range. Offers superior control and smooth crane operation with reduced load shock.



ACTIVE OSCILLATION SUPPRESSION (AOS) *

Loads are held steady, rather than bouncing after abrupt stops. The boom experiences much less shock loading. Novice crane users can operate the crane much smoother and more accurately. Experienced crane users can run the crane faster, with no loss of accuracy. U.S. Patent # 6,328,173. Other patents apply.

NORTH AMERICAN ASSEMBLY



Located in Niagara Falls, Palfinger North America has become the market leader in the design and manufacturing of truck mounted cranes. Worldwide, PALFINGER stands for the most EFFICIENT, RELIABLE and INNOVATIVE lifting, loading and handling solutions for the LIFETIME of the product. Investing in PALFINGER products means receiving the highest level of performance, support and service. Expect LIFETIME EXCELLENCE from the market leader in crane technology!

SUPERIOR ENGINEERING

PALFINGER authorized Dealers and Service Centers are factory trained. Rely on PALFINGER and our vast dealer network to offer the highest quality installations and after sale support services. Dealer installations are carried out through PALFINGER engineering services to ensure optimum layout, weight distribution and stability.

STABILITY ANALYSIS

THIS DRAWING SHOWS THE STABILITY OF THE FINISHED TRUCK.

NOTES:
 - STABILITY RESULTS BASED ON INFORMATION PROVIDED.
 - ALL UNITS MUST BE PROPERLY TESTED.
 - RESULTS BASED ON SUBFRAME DESCRIBED ON SHEET.

RESULTS ARE SHOWN:
 1) PIE CHART - THIS WORKING AREAS, 100%
 2) STABILITY FACTOR GREATER THAN 1.20
 SUBFRAME TYPE, AND
 3) PAD/TIRE LIFT - OUTRIGGER PAD OR WORKING DIRECTLY ON

FRONT

CURB WEIGHT
14,470 LBS

MAXIMUM PAYLOAD
5,084 LBS

GROSS WEIGHT
19,554 LBS

WEIGHT DISTR. OVERALL HEIGHTS SHOWN ARE THEORETICAL. FROM TAG AXLE MUST BE DETERMINED INDIVIDUAL AXLES PART OF A HORIZONTAL TAG AXLE PERFORMANCE, DEPENDING TRANSFER THE FULL AMOUNT OF WEIGHT

WEIGHT DISTRIBUTION

THIS IS THE STREET-SIDE VIEW OF THE FINISHED UNIT. HEIGHTS AND GROUND CLEARANCES, WHEN SHOWN, ARE AS NOTED.

FRONT

59 BOC

83 BOC

FINAL LAYOUT

THIS IS THE TRUCK INFORMATION USED IN THE FINAL LAYOUT, WEIGHT DISTRIBUTION, AND STABILITY ANALYSIS. IF THE TRUCK IS ALIGNED TO EXTEND FRAME RAIL, YET OR IF IT IS STABILIZED.

FRONT

59 BOC

83 BOC

TRUCK SPECIFICATION

THIS IS THE TRUCK INFORMATION USED IN THE FINAL LAYOUT, WEIGHT DISTRIBUTION, AND STABILITY ANALYSIS. IF THE TRUCK IS ALIGNED TO EXTEND FRAME RAIL, YET OR IF IT IS STABILIZED.

**PW 50001-SH C
FREIGHTLINER 114SD**

NOTE: THIS IS NOT A FINAL DECISION. THE TARE WEIGHTS SHOULD BE VERIFIED BY SCALING THE TRUCK.

| REVISION CONTROL | | DATE |
|------------------|--------|-----------|
| 1 | ISSUE | OCT 20/11 |
| 2 | CHANGE | |
| 3 | CHANGE | |

CRANE / TRUCK ANALYSIS PACKAGE

DATE: OCT 20/11 DRAWN BY: M.P. PROJECT / SHEET NO: 0739G 1 OF 5

| REVISION CONTROL | | DATE |
|------------------|--------|-----------|
| 1 | ISSUE | OCT 20/11 |
| 2 | CHANGE | |
| 3 | CHANGE | |

CRANE / TRUCK ANALYSIS PACKAGE

DATE: OCT 20/11 DRAWN BY: M.P. PROJECT / SHEET NO: 0739G 1 OF 5

