

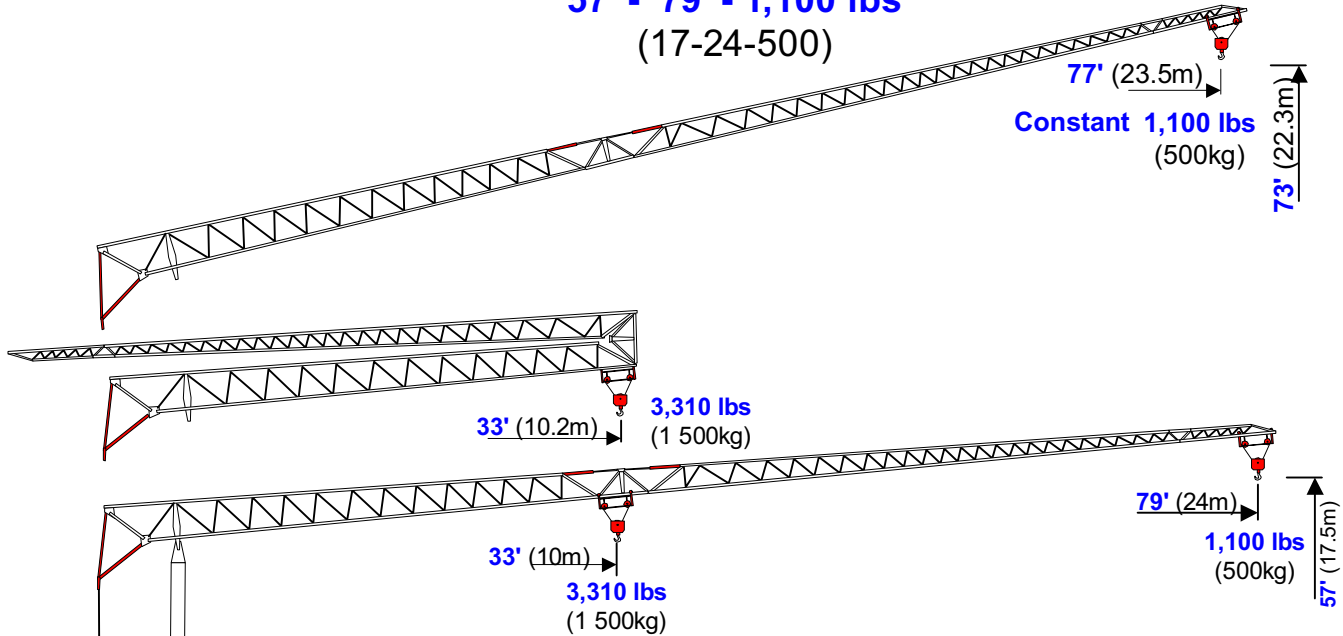
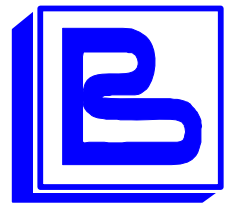
benazzato

Self-Erecting Crane

1179-SC (102)

Self-Contained

57' - 79' - 1,100 lbs
(17-24-500)

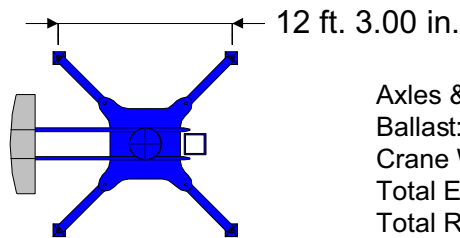
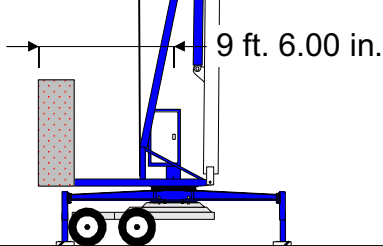


Self-Contained

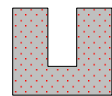
Electric, Hydraulic Or Air Brakes
Goose Neck, 5th Wheel Or Pintle Hitch

Power Requirements

240V, Single Phase



Axles & Hitch: 4,000 lbs
Ballast: 11,025 lbs
Crane Weight: 11,500 lbs
Total Erected Weight: 26,525 lbs
Total Road Weight: 26,525 lbs



Hook	ft.	33	36	39	43	46	49	52	59	66	72	79
Radius	meters	10	11	11.9	13.0	14.0	15.0	16.0	18.0	20.0	22.0	24.0
Max	lbs.	3,308	2,922	2,646	2,359	2,150	1,973	1,819	1,577	1,389	1,235	1,103
Capst	tonnes	1.50	1.33	1.20	1.07	0.98	0.90	0.83	0.72	0.63	0.56	0.50