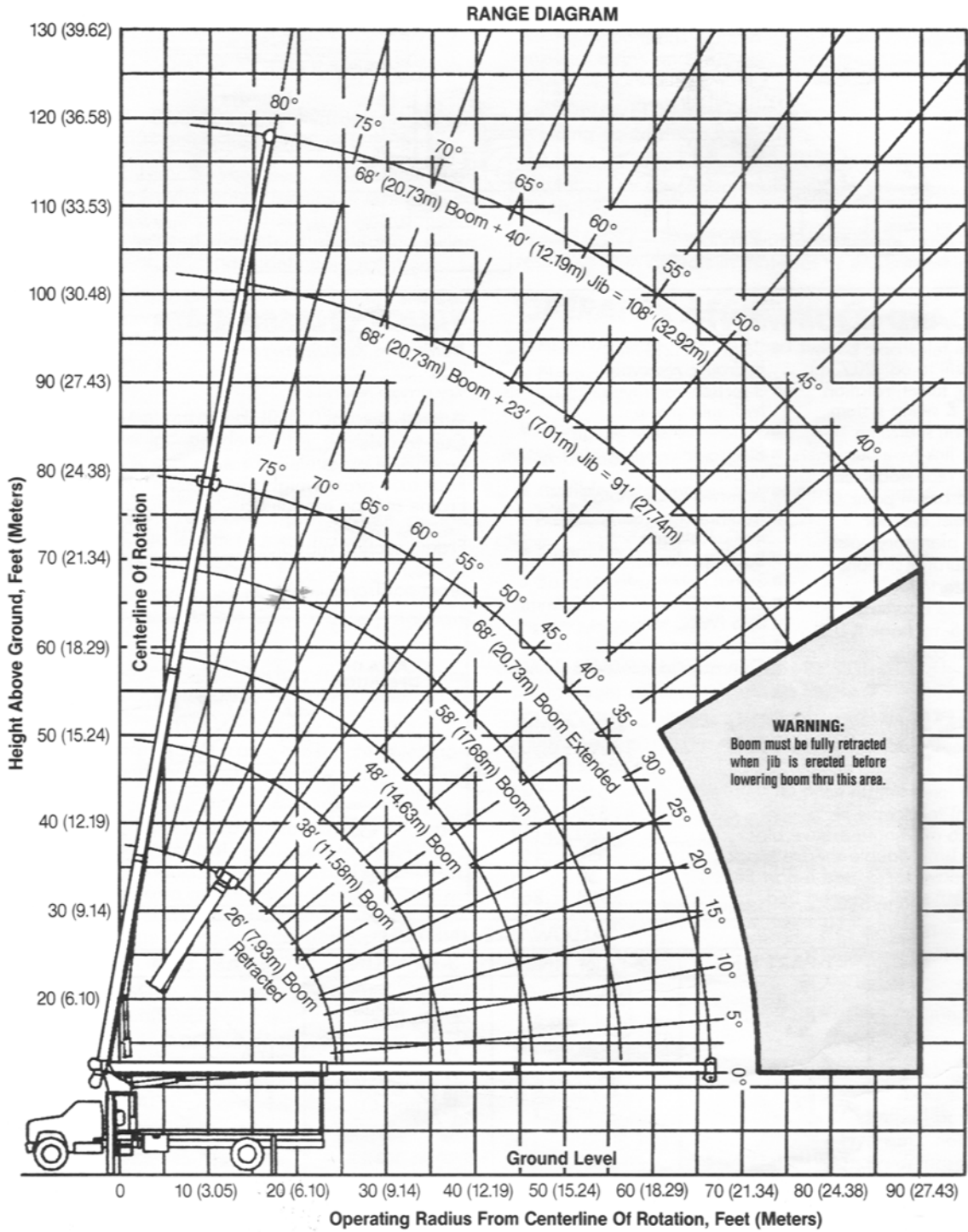




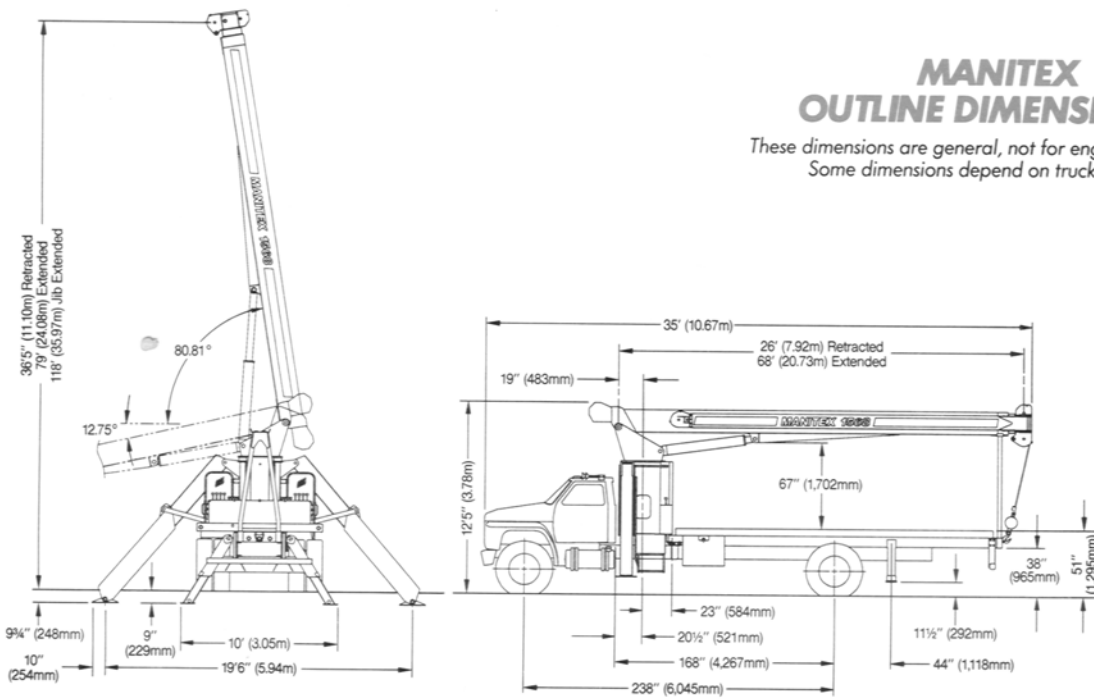
GENERAL SPECIFICATIONS

MODEL 1568 TRUCK-MOUNTED CRANE



MANITEX 1568 OUTLINE DIMENSIONS

These dimensions are general, not for engineering.
Some dimensions depend on truck selected.



STANDARD EQUIPMENT

- 3-section telescopic boom 26' (7.93m) to 68' (20.73m)
- Pedestal, turret, rotation bearing & swing system
- 20' (6.10m) subframe
- A-frame link-type outriggers
- A-frame rear stabilizers
- 2-sheave boom point
- Boom-hoist cylinder
- 2-speed planetary hoist
- Dual operator stations
- Engine start/stop
- Removable boom rest
- 5-ton (4.5-mt) hook & ball
- 372° non-continuous rotation
- 56-gallon (212-liter) hydraulic reservoir
- 3-section vane-type hydraulic pump
- System pressure gauge
- Electronic capacity-alert system, audio/visual
- Anti-two-block shutoff
- Audible outrigger/stabilizer motion alarm
- Back-up alarm
- Signal horn
- 260' (79.25m) of 1/2" (12.7mm) EIPS IWRC wire rope
- Finish paint in Manitex colors
- Operator/service/parts manuals

TRUCK CHASSIS DATA

Minimum Requirements:

Some configurations and options may increase requirements

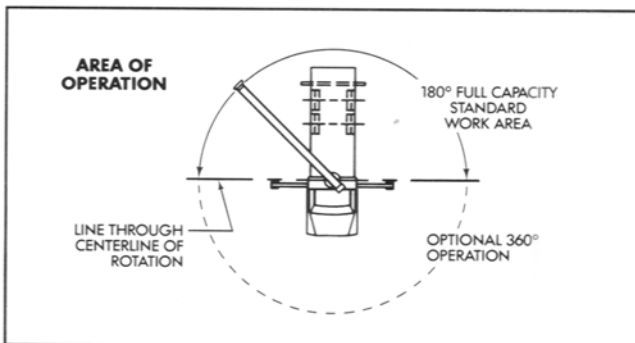
Wheelbase	236"	5,994mm
Cab to axle	168"	4,267mm
Front axle gross weight rating	12,000 lbs.	5,443 kgs
Rear axle gross weight rating	21,000 lbs.	9,525 kgs
Frame section modulus.....	18.0 in ³	295 cc
	50,000 psi	344,750 kPa
Frame section modulus.....	15.9 in ³	260 cc
	110,000 psi	758,450 kPa
Nominal frame width	34"	864mm

WEIGHTS

Total crane, including hydraulic fluid 13,900 Lbs. 6,305 Kgs.

Additions:

23' (7.01m) fixed-length jib	545	247
40' (12.19m) telescopic jib	820	372
15-ton (13.6-mt) single-sheave block.....	260	118
20-ton (18.1-mt) double-sheave block	350	159
Hanger sheave for 3- and 4-part line.....	50	23
20'4" (6.20m) steel or wood bed.....	1,900	862



ALLOWABLE LINE PULL

1-PART LINE	2-PART LINE	3-PART LINE	4-PART LINE
7,600 Lbs. (3,447 Kgs.) ¹ 7,400 Lbs. (3,357 Kgs.) ²	15,200 Lbs. (6,895 Kgs.) ¹ 14,800 Lbs. (6,713 Kgs.) ²	22,800 Lbs. (10,342 Kgs.) ¹ 22,200 Lbs. (10,070 Kgs.) ²	30,000 Lbs. (13,608 Kgs.) ¹ 29,600 Lbs. (13,426 Kgs.) ²
WARNING: Anti-two-block system must be in good operating condition before operating crane. Refer to Owner's Manual. Keep at least 3 wraps of load line on drum at all times.			
¹ With 1/2" (12.7mm) or 9/16" (14.3mm) 6 x 25 EIPS IWRC (3.5:1 S.F.) 26,600 Lbs. (12,066 Kgs.) minimum breaking strength			
² With 9/16" (14.3mm) Rotation Resistant (5.0:1 S.F.) 37,000 Lbs. (16,783 Kgs.) minimum breaking strength			

STANDARD SPECIFICATIONS AND FEATURES

BOOM—26' (7.93m) to 68' (20.73m). Inverted-T cross section. 3-section telescoping type, extended and retracted proportionally by double-acting hydraulic cylinder and cable-crowd system. Maximum tip height 78' (23.77m).

BOOM POINT—Two high-density nylon sheaves mounted on heavy-duty roller bearings. Two removable pin-type rope guards.

HOIST—Maximum line speed 268 fpm (81.69 mpm). Maximum bottom-layer line pull 10,600 lbs. (4,808 kgs). Two-speed planetary reducer. Spring-applied, pressure-released internal brake.

WIRE ROPE—260' (79.25m) of ½" (12.7mm) diameter 6 x 25 EIPS IWRC.

BOOM ELEVATION—Double-acting hydraulic cylinder. Working range from 12° below horizontal to 80° above.

SWING SYSTEM—Externally mounted, double-reduction planetary driven by hydraulic motor. Maximum swing speed 1.50 rpm. Wet multi-disc internal brake is spring applied, pressure released. Oversized diameter meter ball bearing swing circle with external gear. 372° non-continuous rotation.

OUTRIGGERS—8' (2.44m) retracted; 19'6" (5.98m) extended. A-frame link type. Operated independently for precise leveling. Equipped with double-acting hydraulic cylinders. 16" (406mm) x 20" (508mm) pivoting pads. 9¾" (248mm) maximum rise.

STABILIZERS—8' (2.44m) retracted; 10' (3.05m) extended. A-frame type. Operated independently for precise leveling. Double-acting hydraulic cylinders. 8" (203mm) x 11" (279mm) fixed pads. 9" (229mm) maximum rise.

SUBFRAME—Torsionally resistant, rigid 4-plate design. Mounted under crane, full length of truck frame.

REAR UNDERRIDE PROTECTION—Supplied on factory-mounted cranes. Fabricated structure mounted under rear of bed. Complies with Bureau Motor Carrier Safety standard 393.86.

BACK-UP ALARM—Supplied on factory-mounted cranes. Electronic audible motion alarm activated when truck transmission is in reverse gear.

MOUNTING—Pedestal and subframe are mounted to chassis by threaded rods and clamp plates. No welding, drilling, or bolting to truck.

CONTROL SYSTEM—Dual operator stations are equipped with 4 single-lever crane controls arranged to ANSI B30.5 standards. Fully proportional control valves and system pressure gauge. Each station also includes outrigger and stabilizer controls, engine start/stop, foot throttle, signal horn, capacity-alert console, boom-angle indicator, bubble levels, load chart and range diagram.

HYDRAULIC SYSTEM—A 3-section vane pump direct mounted to power takeoff on truck transmission provides 35 gpm (133 lpm) to the hoist, 8 gpm (30 lpm) to the swing circuit and 18 gpm (68 lpm) to other crane functions. 56-gallon (212-liter) baffled reservoir includes 10-micron filter in the return line. All fittings meet SAE standards and have O-ring face seals.

HYDRAULIC CYLINDERS—All are equipped with integral holding valves.

BOOM REST—Heavy-duty fabrication. Easily removed to simplify loading and unloading.

LOAD HOOK—5-ton (4.5-mt) capacity hook with heavy-duty swivel and weight is provided for single-line operation.

CAPACITY-ALERT SYSTEM—Electronically senses boom-hoist cylinder pressures. Color-coded gauge at each operator station and audible alarm indicate approaching overload. Optional shutdown system hydraulically prevents continuing overload.

ANTI-TWO-BLOCK SYSTEM—Audible warning and shutoff functions prevent hook from contacting boom point.

ELECTRICAL—12-volt direct current. Environmentally sealed enclosure contains printed circuit board, accessory circuit, terminal strips and relay. Externally mounted labeled fuses and accessory outlet.

DESIGN/WELDING—Design conforms to ANSI B30.5. Welding conforms to AWS D1.1.

MANUALS—Operator, service and parts manuals depict correct crane operation, maintenance procedures and parts listing.

WARRANTY—12-month warranty covers parts and labor resulting from defects in material or workmanship.

OPERATOR ASSIST FEATURES

- Anti-two-block warning and shutoff
- Electronic capacity-alert system, audio/visual
- Load chart/range diagram
- Boom-angle indicator
- Audible outrigger/stabilizer motion alarm
- Engine start/stop
- Signal horn
- Back-up alarm

OPTIONS

FIXED SWING-AROUND JIB—23' (7.01m) fixed length. Stows along boom base. Maximum tip height 101' (30.79m).

TELESCOPIC SWING-AROUND JIB—Working lengths 23' (7.01m) and 40' (12.19m). Stows along boom base. Telescopic section stows inside jib base. Manually pinned in retracted or extended position. Maximum tip height 118' (35.97m).

BED (optional)—8' (2.44m) x 20'4" (6.20m). Deck of high-density hardwood or diamond steel tread plate. Cross sills on 12" (305mm) centers. Bolts to subframe.

- ⅜" (14.3mm) wire rope, 6 x 25 EIPS IWRC
- ⅜" (14.3mm) rotation-resistant wire rope
- Hook block for 2- to 4-part load line
- Hanger sheave for 3- or 4-part line
- Aerial baskets, 1- or 2-person
- Remote-control operation
- Front-bumper stabilizer for 360° operation
- Hydraulic swivel for continuous rotation
- Capacity overload shutdown system
- Dunnage/tool boxes
- Air throttle
- Various mountings
- Special paint
- Roofer's package
 - Pallet forks
 - Clamshell buckets
 - Hydraulic hose reel
 - Trash dumpster
 - Gravel hopper
 - Oil cooler for duty-cycle applications

MODEL 1568 LOAD RATING CHART

This capacity chart is for reference use only and must not be used for a specific serial number crane. Lifting off the main boom point while the swing-around jib is erected is not approved.

MEETS
ANSI B30.5
REQUIREMENTS

OUTRIGGERS AND STABILIZERS EXTENDED																			
Operating Radius		Load Rating 26' (7.93m) Boom			Load Rating 38' (11.58m) Boom			Load Rating 48' (14.63m) Boom			Load Rating 58' (17.68m) Boom			Load Rating 68' (20.73m) Boom					
Feet	Meters	Loaded Bm. Angle	Pounds	Kilograms	Loaded Bm. Angle	Pounds	Kilograms	Loaded Bm. Angle	Pounds	Kilograms	Loaded Bm. Angle	Pounds	Kilograms	Loaded Bm. Angle	Pounds	Kilograms			
5'	1.52	77°	30,000	13,608															
8'	2.44	70°	21,210	9,621	77°	19,530	8,859												
10'	3.05	66°	17,820	8,083	74°	16,420	7,448	78°	15,280	6,930									
12'	3.66	61°	15,340	6,958	71°	14,200	6,441	76°	13,350	6,055	79°	11,300	5,125						
15'	4.57	52°	12,600	5,715	66°	11,770	5,339	72°	11,070	5,021	76°	9,390	4,259	78°	8,830	4,005			
20'	6.10	36°	9,160	4,155	57°	9,080	4,119	65°	8,600	3,900	70°	7,320	3,320	74°	6,930	3,143			
25'	7.62				47°	7,240	3,284	58°	6,980	3,166	65°	5,940	2,694	70°	5,610	2,544			
30'	9.14				36°	5,710	2,590	51°	5,770	2,617	59°	4,920	2,231	65°	4,680	2,122			
35'	10.67				17°	3,870	1,755	42°	4,780	2,168	53°	4,140	1,877	60°	3,960	1,796			
40'	12.19							32°	3,850	1,746	47°	3,490	1,583	55°	3,390	1,537			
45'	13.72							16°	2,580	1,170	39°	2,910	1,320	50°	2,910	1,320			
50'	15.24										29°	2,320	1,052	43°	2,480	1,125			
55'	16.76										15°	1,460	662	36°	2,070	939			
60'	18.29													28°	1,620	735			
65'	19.81													14°	950	431			
		Deduction for Stowed Jib																	
			480	218			330	150			260	118			220	100		190	86

JIB LOAD RATING IN LBS./KGS. WITH OUTRIGGERS AND STABILIZERS EXTENDED							
Operating Radius		Jib Load Rating 23' (7.01m) Jib For All Boom Lengths			Jib Load Rating 40' (12.19m) Jib For All Boom Lengths		
Feet	Meters	Loaded Bm. Angle	Pounds	Kilograms	Loaded Bm. Angle	Pounds	Kilograms
20'	6.10	78°	3,500	1,587			
25'	7.62	75°	3,060	1,388	78°	1,940	880
30'	9.14	72°	2,700	1,224	75°	1,690	766
35'	10.67	69°	2,400	1,088	72°	1,490	676
40'	12.19	65°	2,150	975	70°	1,320	598
45'	13.72	62°	1,950	884	67°	1,180	535
50'	15.24	58°	1,770	802	64°	1,060	480
55'	16.76	55°	1,550	703	61°	960	435
60'	18.29	50°	1,350	612	58°	870	394
65'	19.81	46°	1,160	526	55°	790	358
70'	21.34	41°	1,010	458	51°	730	331
75'	22.86	36°	830	376	48°	670	304
80'	24.38				44°	610	276
85'	25.91				40°	570	258
90'	27.43				35°	520	236

WARNING: Before operating any Manitex crane, the operator must read and understand the owner's manual and other instructions for a specific serial number crane. This chart is only a guide. The notes and warnings are for illustration only and cannot be used to operate a crane.

The operating radius shown in the jib load rating chart is for fully extended boom only. When boom is not fully extended, use only loaded boom angle to determine load rating of jib. Do not rely on capacity-alert system when lifting from jib.

Main boom load ratings above the heavy line are based on a constant hoist cylinder pressure, machine structural competence, and do not exceed 85% of tipping. Jib load ratings above the heavy line are based only on machine structural competence and do not exceed 85% of tipping.

DO NOT OPERATE A MANITEX TRUCK-MOUNTED CRANE OR ACCESSORIES WITHIN 10' (3.05m) OF LIVE POWER LINES.

Crane load ratings on outriggers are based on freely suspended loads with the machine leveled and standing on a firm uniform supporting surface. No attempt shall be made to move a load horizontally on the ground in any direction.

INFORMATION: Deductions must be made from rated loads for stowed jib, optional attachments, hooks, and load blocks (see deduction chart). Weights of slings and all other load handling devices shall be considered a part of the load.

Deductions From Rated Loads For Manitex Supplied Load Handling Devices		
Hanger Sheave	50 Lbs.	(23 Kgs.)
Overhaul Ball	120 Lbs.	(54 Kgs.)
Single-Sheave Load Block	260 Lbs.	(118 Kgs.)
Double-Sheave Load Block	350 Lbs.	(159 Kgs.)
Hose Reel	190 Lbs.	(86 Kgs.)
Swing-Around Jib	See load chart	



MANITEX, INC.

A Subsidiary of The Manitowoc Company, Inc.

4300 Acapulco Avenue ■ McAllen, Texas 78503
Telephone: 210-630-2690 ■ Telefax: 210-630-2695

MANITOWOC MID-ATLANTIC
11301 REAMES ROAD
CHARLOTTE, N.C. 28213
PHONE (704) 597-1051
FAX (704) 597-0883

Because of continuing improvements, Manitex reserves the right to change product specifications without notice.

Form 2504-1092

Printed in U.S.A.

©1992 Manitex