



# Altec AM650/AM855 Overcenter Material Handler



- Altec ISO-Grip® Control System
- Working Height Up to 60.1 ft (18.3 m)
- Side Reach Up to 46.8 ft (14.3 m)
- Heavy Duty Material Handling Capability
- Compact Boom End Design

## STANDARD FEATURES

- Altec ISO-Grip® Control System
- Platform – Fiberglass Side-Mounted with Platform Tilt, 24 x 30 x 42 in (610 x 762 x 1067 mm)
- Material Handling System – Hydraulic Tilting Two-Section Jib, Winch & Tool Circuit
- Outrigger Boom Interlock System
- Back Up Alarm
- Outrigger Motion Alarm

## OPTIONS

- Platforms – Dual Fiberglass Side-Mounted with Platform Tilt, 24 x 30 x 42 in (610 x 762 x 1067 mm)
- Dual Controls – One at Each Platform
- Engine Start/Stop
- Secondary Stowage System
- Outriggers – “A” Frame or Radial
- Tool Circuit at Tailshelf

## RECOMMENDED FEATURES

- Fall Protection System
- Wheel Chocks
- Platform Liner
- Platform Cover

## GENERAL SPECIFICATIONS

|                                   | AM650      |         | AM855      |         |
|-----------------------------------|------------|---------|------------|---------|
| Height to Bottom of Platform*     | 50.1 ft    | 15.3 m  | 55.1 ft    | 16.8 m  |
| Working Height*                   | 55.1 ft    | 16.8 m  | 60.1 ft    | 18.3 m  |
| Reach from Centerline of Rotation |            |         |            |         |
| Lower Boom at 0°                  | 41.8 ft    | 12.7 m  | 46.8 ft    | 14.3 m  |
| Upper Boom at 100°                | 33.2 ft    | 10.1 m  | 34.7 ft    | 10.6 m  |
| Stowed Travel Height*             | 11.6 ft    | 3.5 m   | 11.6 ft    | 3.5 m   |
| Rotation                          | continuous |         | continuous |         |
| Lower Boom Articulation           | 100°       |         | 100°       |         |
| Upper Boom Articulation           | 230°       |         | 230°       |         |
| Hydraulic Platform Rotation       | 94°        |         | 94°        |         |
| Platform Capacity                 |            |         |            |         |
| Single One-Man, Side-Mounted      | 350 lb     | 159 kg  | 350 lb     | 159 kg  |
| Dual One-Man, Side-Mounted        | 600 lb     | 272 kg  | 600 lb     | 272 kg  |
| Single, Two-Man, Side-Mounted     | 700 lb     | 318 kg  | 700 lb     | 318 kg  |
| Lower Boom Isolation              | 24 in      | 610 mm  | 24 in      | 610 mm  |
| Upper Boom Isolation (min)        | 120 in     | 3048 mm | 150 in     | 3810 mm |

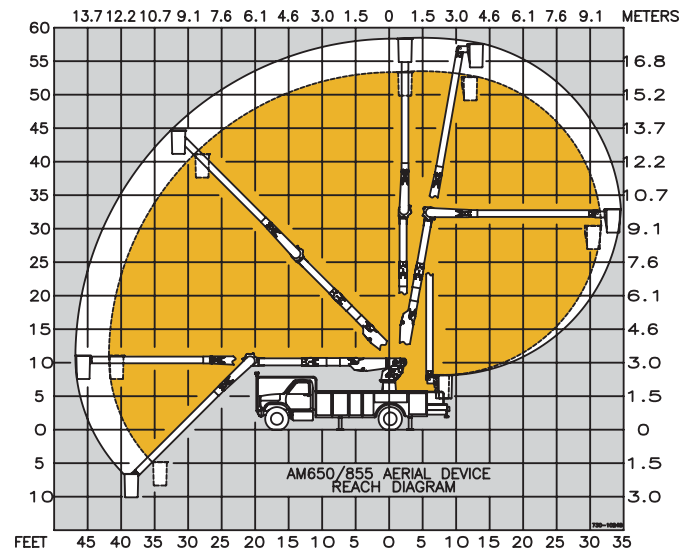
\*Based on 40 in (1016 mm) Chassis Frame Height

Altec Aerial Devices meet or exceed all applicable ANSI Standards as of the date of manufacture. Altec reserves the right to improve models and change specifications without notice or obligation.



The AM650/AM855's side-by-side boom stow design offers low travel height with a low center of gravity and provides easy platform entry.

## REACH DIAGRAM



Altec Sales and Service



Manufacturing and Service Facilities Located Throughout the United States and Canada  
www.altec.com

**Altec Industries, Inc.**

Post Office Box 10264  
Birmingham, Alabama 35202  
Phone 205/991-7733  
Fax 205/991-9993