

# SKYLIFT

## **PATRIOT★40/50**



**Ph. 440-960-2100**  
**Fax 440-960-2104**

**[www.skyliftus.com](http://www.skyliftus.com)**



**State of the Art  
Belt Pack Radio Controls**



**Setting pole**



**Transporting pole**

- Low ground pressure
- Ultra light design
- Tow behind line truck
- Low operating costs



**Pin on Bucket with  
Can Handler!**





***Transporting pole***



***Loading pole***



***Setting pole***

- Low ground pressure
- Ultra light design
- Tow behind line truck
- Low operating costs



# **PATRIOT★40/50** TECHNICAL SPECIFICATIONS

**CRAWLER CARRIER**

**ENGINE**

**SPEED**

**WIDTH**

**GROUND PRESSURE**

**DIGGER DERRICK**

**HEIGHT**

**WEIGHT**

**LIFT CAPACITY**

**SHEAVE HEIGHT**

**BOOM INSULATION**

**BOOM EXTENSION**

**WINCH**

**BOOM ROTATION**

**CONTROLS**

**AUGER**

**AUGER TORQUE**

**Morooka MST-600VD**

**76 H.P. Diesel**

**7.5 M.P.H.**

**77"**

**5 PSI**

**SKYLIFT 40/50**

**9 FT**

**15,880 / 18,680 LBS**

**6000 LB**

**40/50 FT**

**46 KV Category C**

**Full Hydraulic**

**Planetary**

**Continuous**

**Full Pressure AT Command Console**

**18" Bullet Tooth**

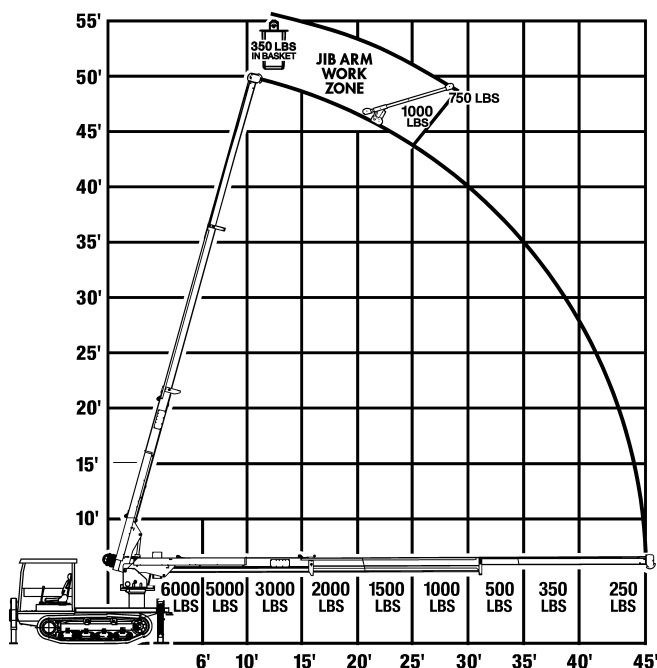
**5,800/10,500 FT LBS.**

## **OPTIONAL EQUIPMENT**

- CAN HANDLER - JIB / WINCH
- HYDRAULIC HOSE REEL FOR TOOLS
- ELECTRIC OR HYDRAULIC RECOVERY WINCH
- HYDRAULIC OVERLOAD PROTECTION
- BELTPACK RADIO REMOTE FOR BOOM CONTROLS W/ START STOP
- HYDRAULIC POLE GUIDES
- HYDRAULIC JIB / 8 FT ADDITIONAL BOOM
- BOOM OVERSTOW SWITCH
- TWO SINGLE MAN BASKETS WITH DUAL BUCKET HANGER.
- HYDRAULIC FRONT BLADE
- HIGH / LOW TWO SPEED THROTTLE
- DECK BUCKET STORAGE PLATFORM
- TRAILER / 18,000 LB G.V.W.R. TANDEM AXEL

## **PATRIOT 50 WORK LOAD CHART**

Full 360° Work Zone



3000 Leavitt Rd. Lorain, Ohio 44052  
Ph.440-960-2100 Fax 440-960-2104